

About Us – Washington State

- 3.4M registered voters
- 39 counties
 - 38 independently elected auditors
 - + one appointee
- Vote by mail - 37 of 39 counties

Approach

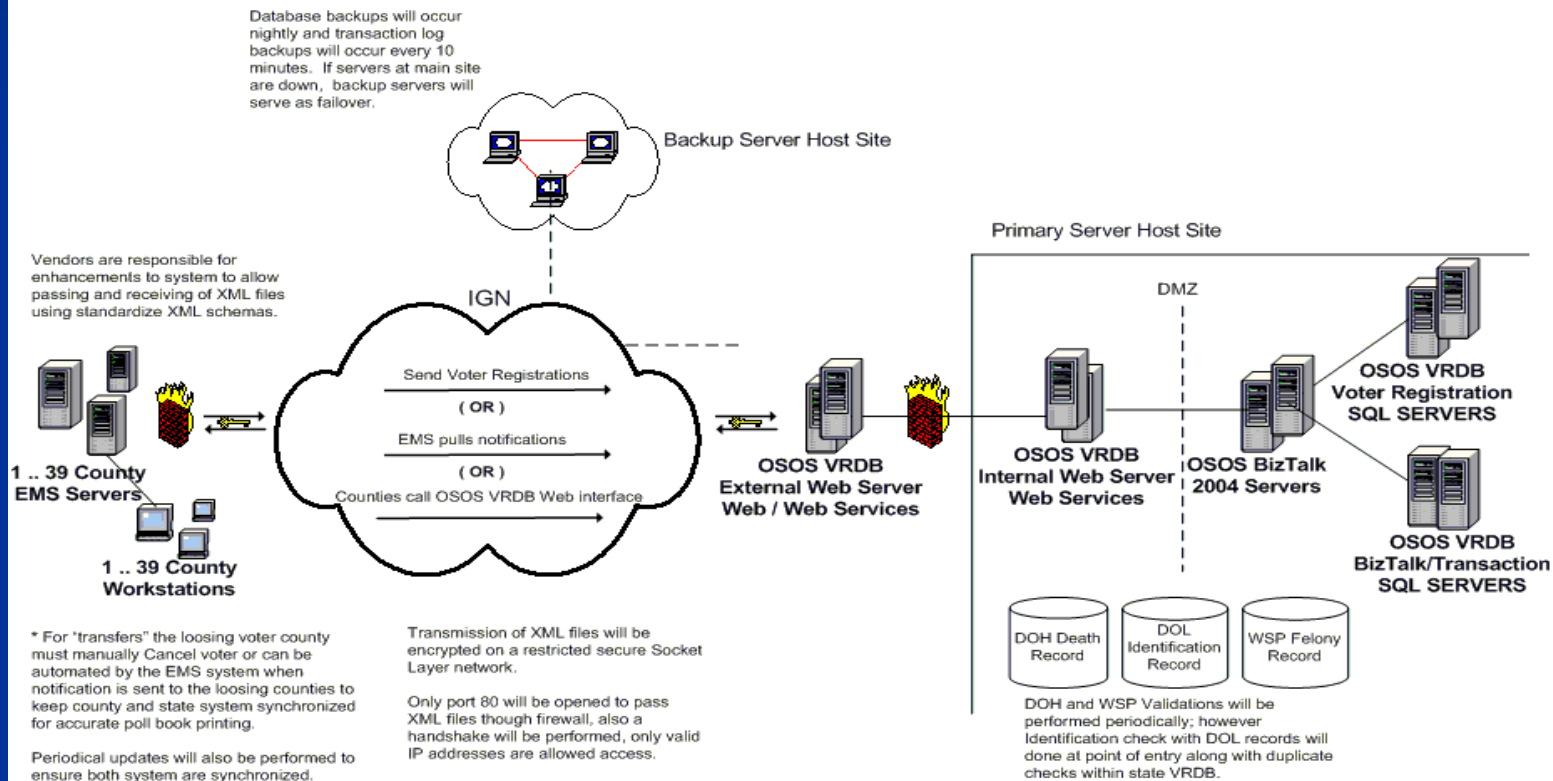
- In-house
- Microsoft programming support
- Scope
 - Phase 1 - HAVA requirements
 - Brutally protected against scope creep
 - Met January 2006 deadline on 6M budget
 - Phase 2 - Bells and whistles (also 6M)
 - MyVote including on-line voter registration
 - Candidate filing including on-line
 - Host county websites with county look and feel

Agenda Question

- Provide an overview of your state's voter registration database system architecture

State Architecture

Statewide Voter Registration Database System Architecture



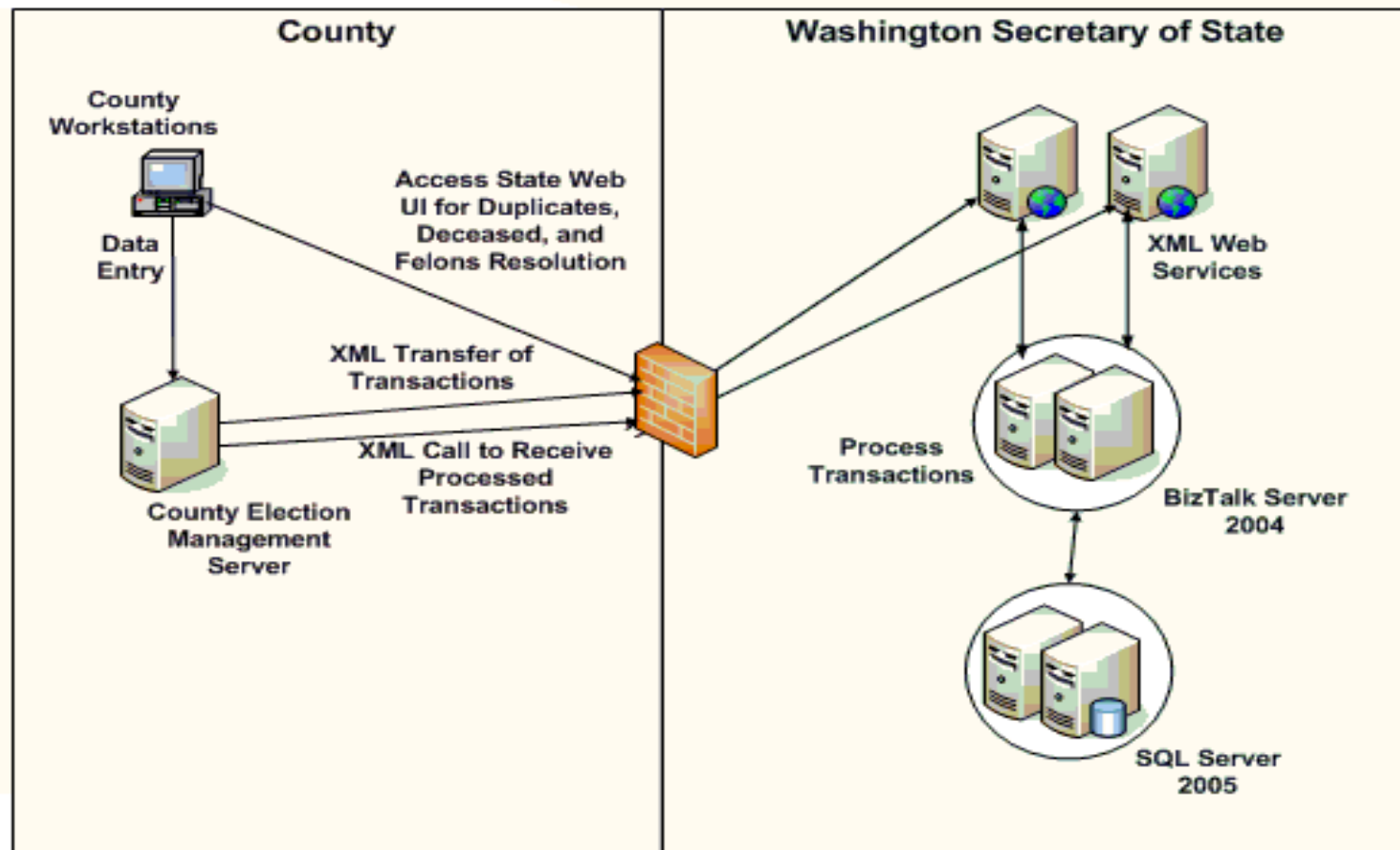
Infrastructure

- Hosts
 - Production failover servers - central Washington
 - Development and testing servers - western Washington
- Software services –
 - MS SQL Server 2005,
 - Biztalk
- Connectivity ---- existing InterGovernmental Network (IGN)
- HAVA paid for upgrade of IGN

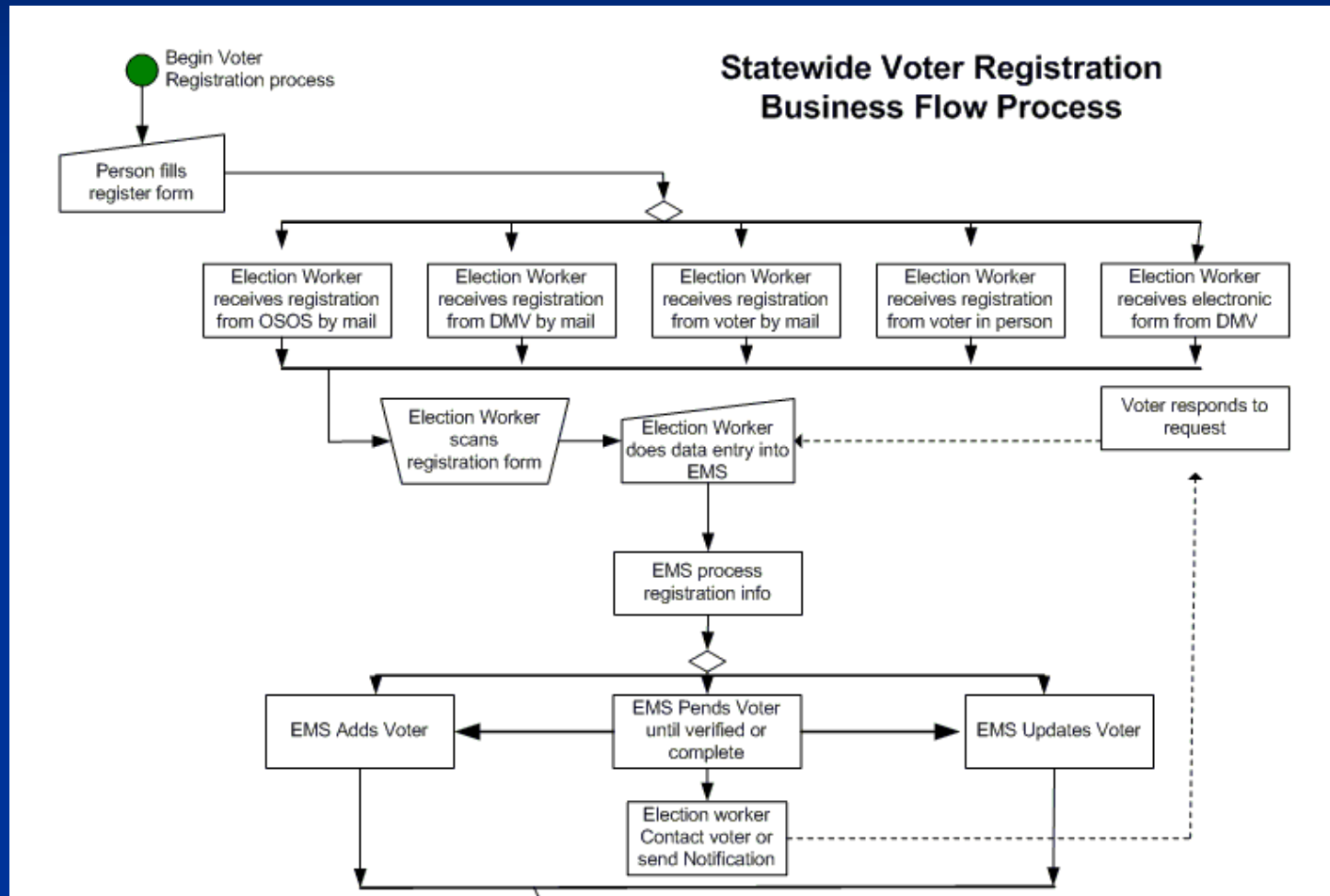
Agenda Question

- ... and the data flows in question.

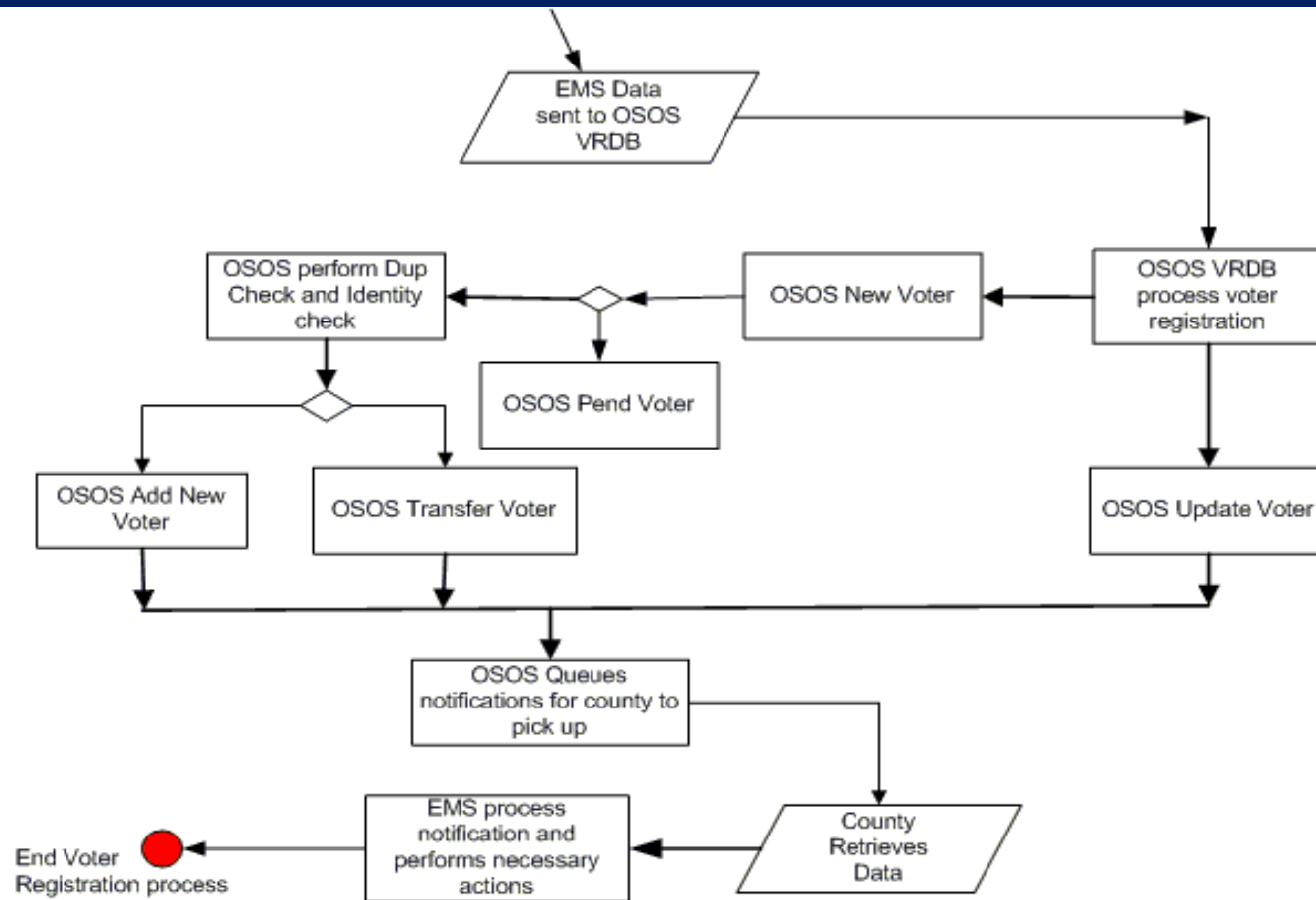
Data Flow



Data flow – County side



Data flow – State Side



Agenda Questions

- What issues have you encountered given your state's architectural approach to the problem of constructing HAVA-compliant databases?

Top down or bottom up?

- Each county has its own vendor supplied VR system
 - Four different vendors
- Most voter registration tasks occur on the local system
- Updates and adding new records normally happen in real time
- New records approved by central system prior to activation at local level*

Centralized system with distributed processing

■ Local systems

- Data entry
- Precinct-ing
- Production of voter lists
- Credit voters

■ Central system

- Audits local voter lists
- Flag records to be cancelled - felons, deaths, duplicate records, and transfers
- Authenticates voter ID – driver license and SSN

Agenda Question

- What issues have you encountered given your state's architectural approach to the problem of constructing HAVA-compliant databases?

Next Step?

- **Obvious step** - compare state lists for duplicate registrations and double voters
- Technical issues are easy to solve
- Policy issues
 - Regional vs national clearinghouse?
 - National schema vs proliferation of data exchange formats?
 - Due process to cancel a voter?
 - Use of digitized signatures?

Issues

- Dealing with multiple vendors
- Maintaining sync between state and local voter lists
- Bow-wave effect on local jurisdictions
- Legal ups and downs
 - Madison case --- felons
 - Washington Association of Churches --- new voter registrations

Contact Us

- Shane Hamlin
 - Assistant Director of Elections
 - Secretary of State - Washington
 - shamlin@secstate.wa.gov

- Paul Miller
 - Technical Services Manager
 - Secretary of State – Washington
 - pmiller@secstate.wa.gov