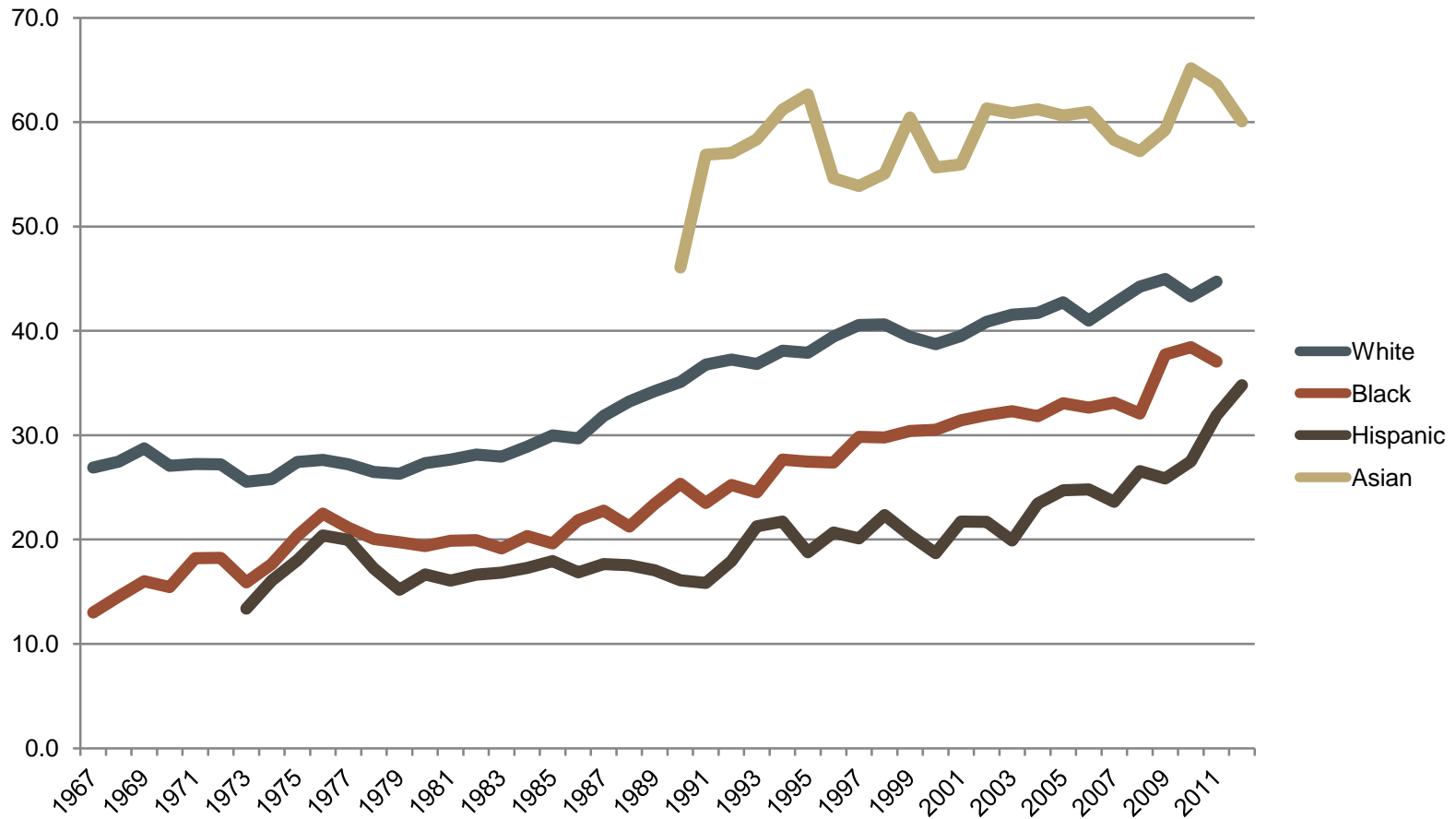


# MEASURING EDUCATION, SKILL, AND PERSONALITY

CHANDRA MULLER

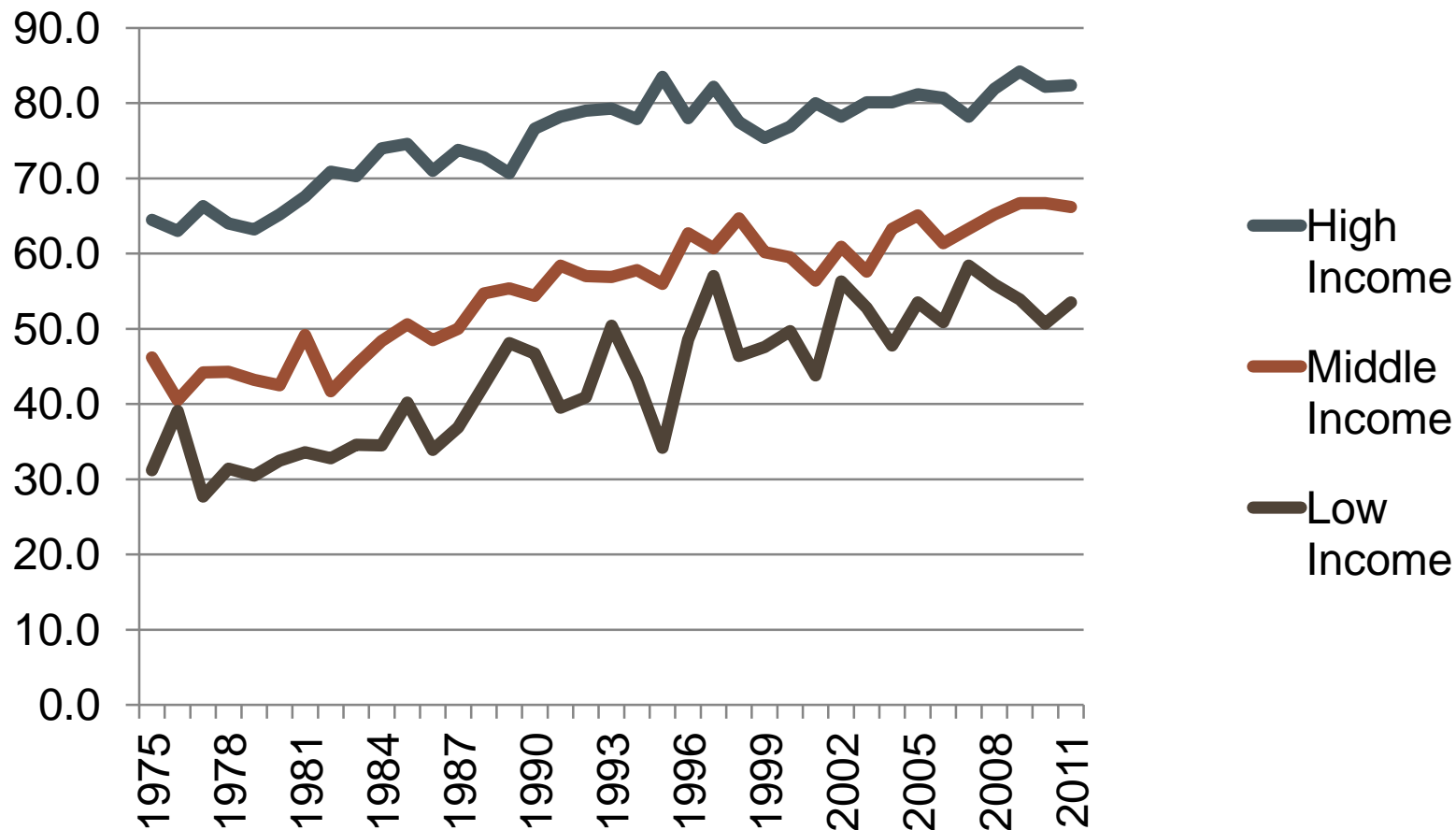
UNIVERSITY OF TEXAS AT AUSTIN

# ENROLLMENT RATES OF 18- TO 24-YEAR-OLDS IN DEGREE-GRANTING INSTITUTIONS, BY RACE AND ETHNICITY (IN %'S)

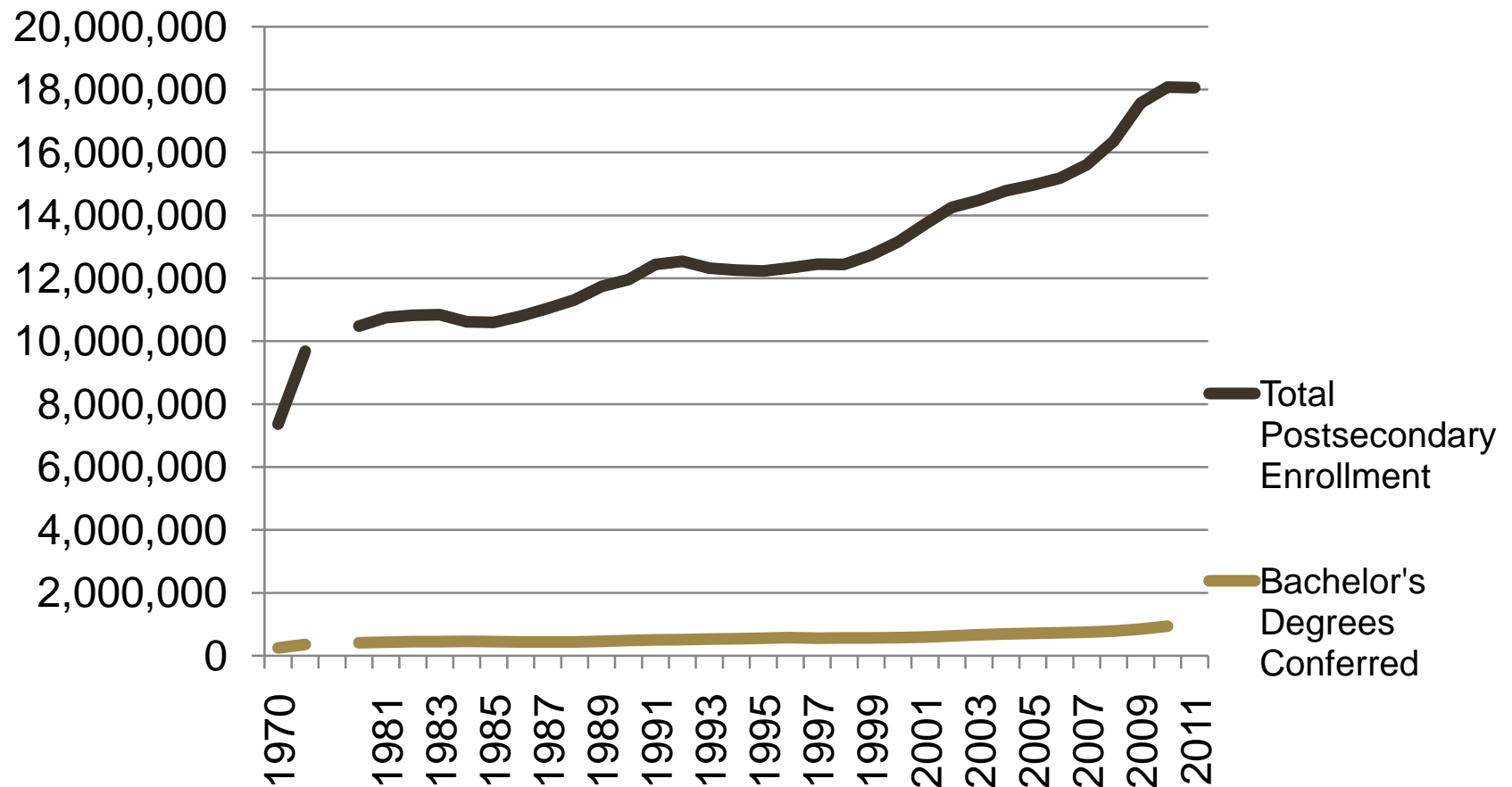


Source: Condition of Education, NCES

RECENT HIGH SCHOOL COMPLETERS  
ENROLLED IN 2-YEAR AND 4-YEAR COLLEGES,  
BY INCOME LEVEL: 1975 THROUGH 2011  
(IN %'S)



# TOTAL POSTSECONDARY ENROLLMENT & BACHELOR'S DEGREES CONFERRED, 1970-2011

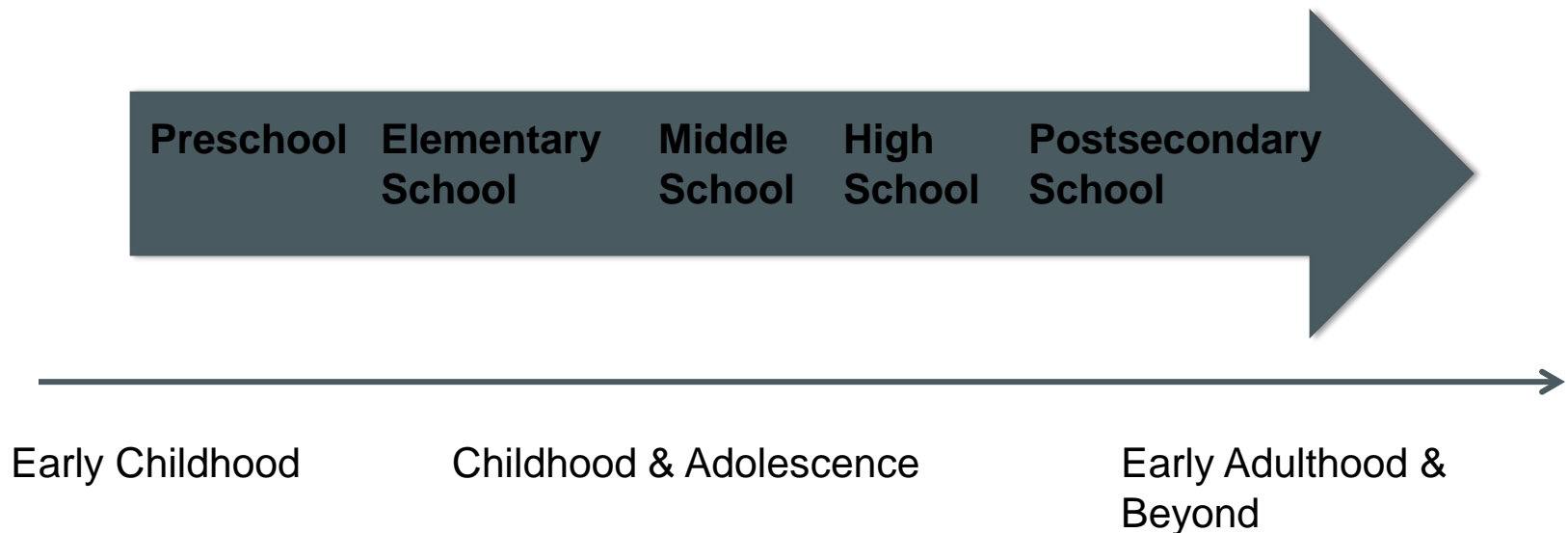


Source: Condition of Education, NCES

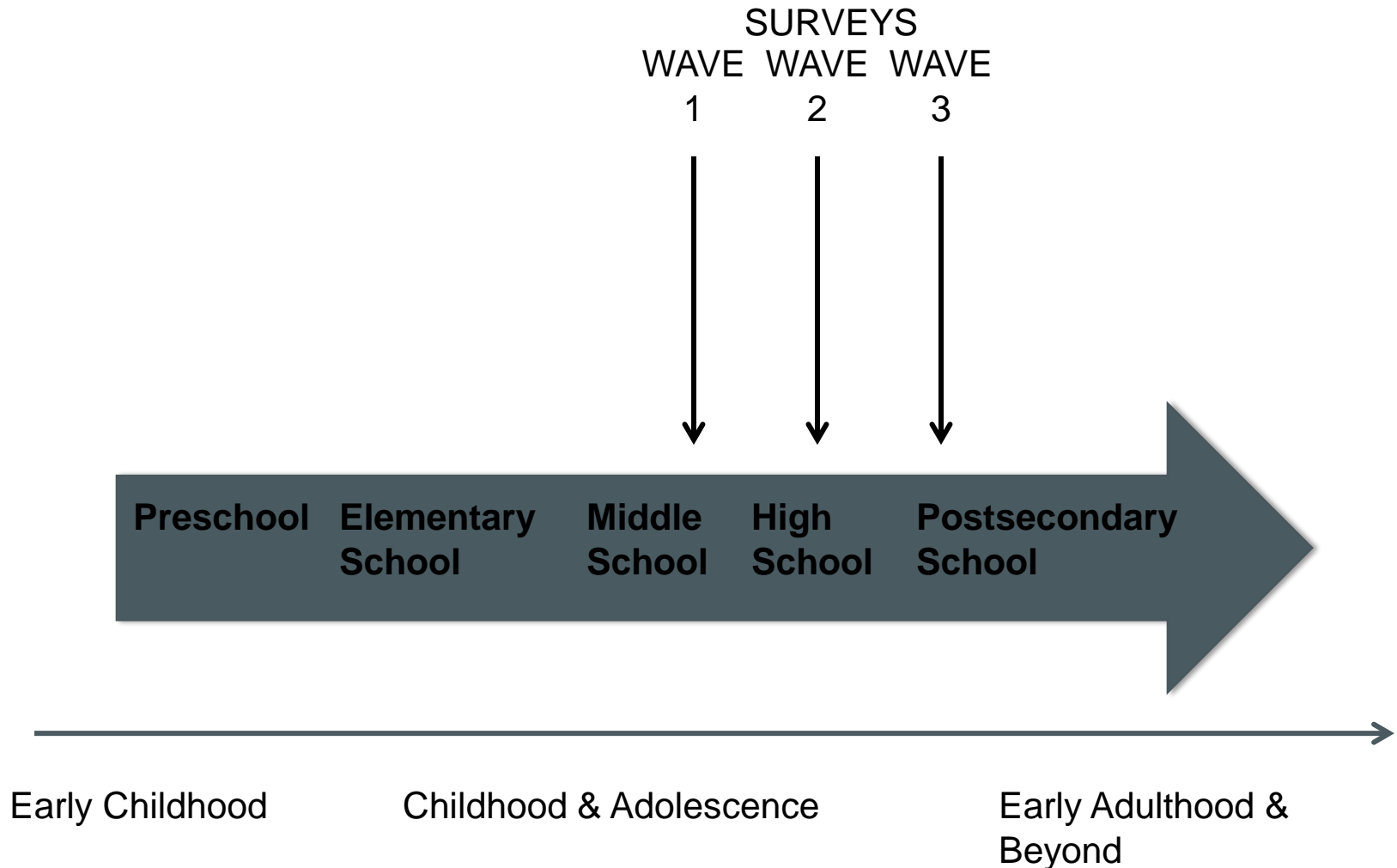
# SOURCES OF INFORMATION ABOUT EDUCATION, SCHOOLS AND SKILLS

- **Transcripts: High school, postsecondary**
- **National Center Education Statistics (NCES) & Office of Civil Rights (OCR) data collections for school contexts**
- **Administrative data**
- **Questionnaires and other survey methods (from students, parents, teachers, guidance counselors)**
- **Private companies and vendors**

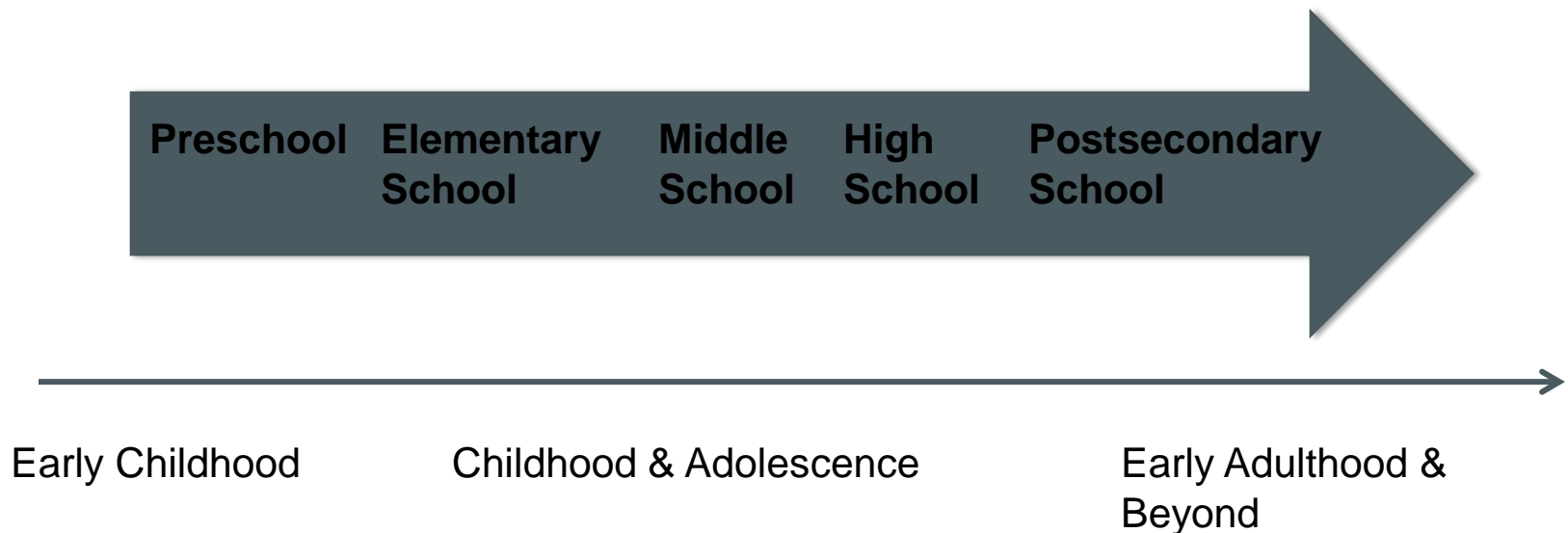
# DATA SOURCES AND THE LIFE COURSE



# DATA SOURCES AND THE LIFE COURSE

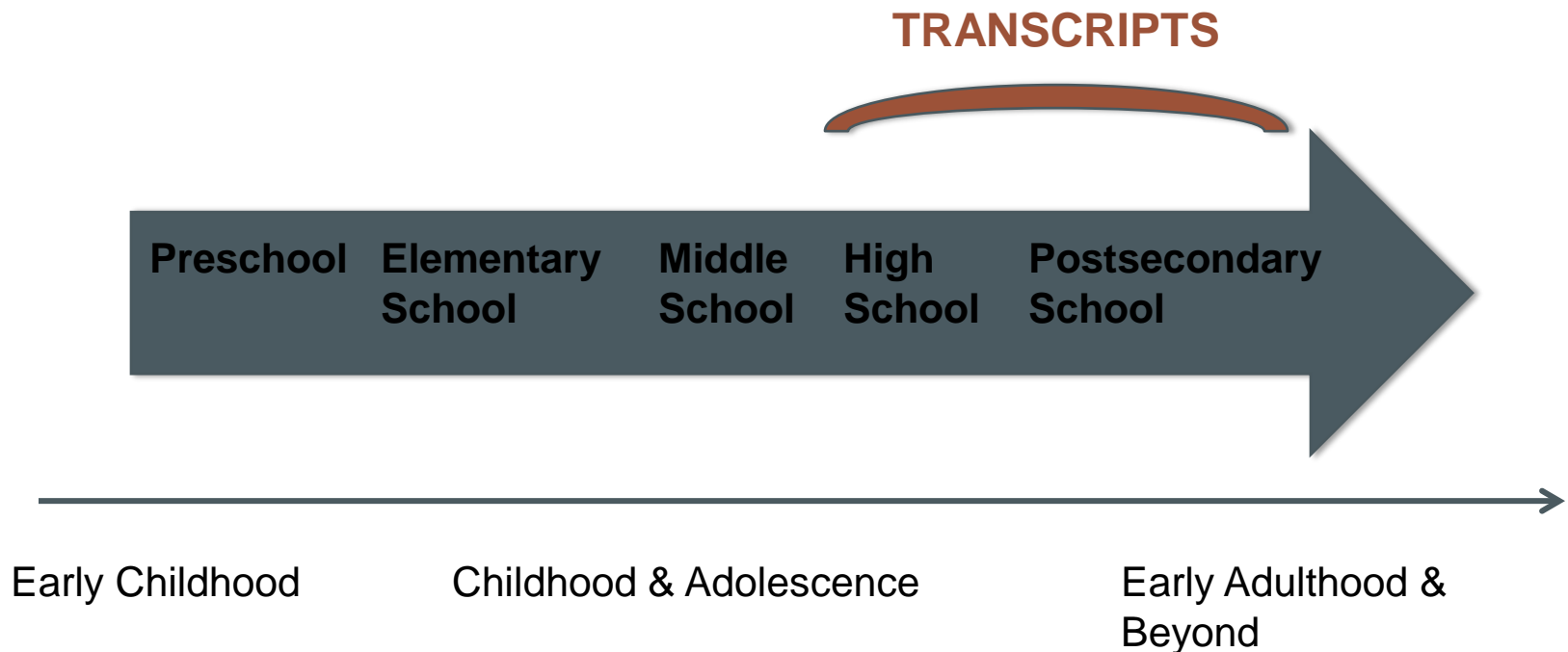


# DATA SOURCES AND THE LIFE COURSE

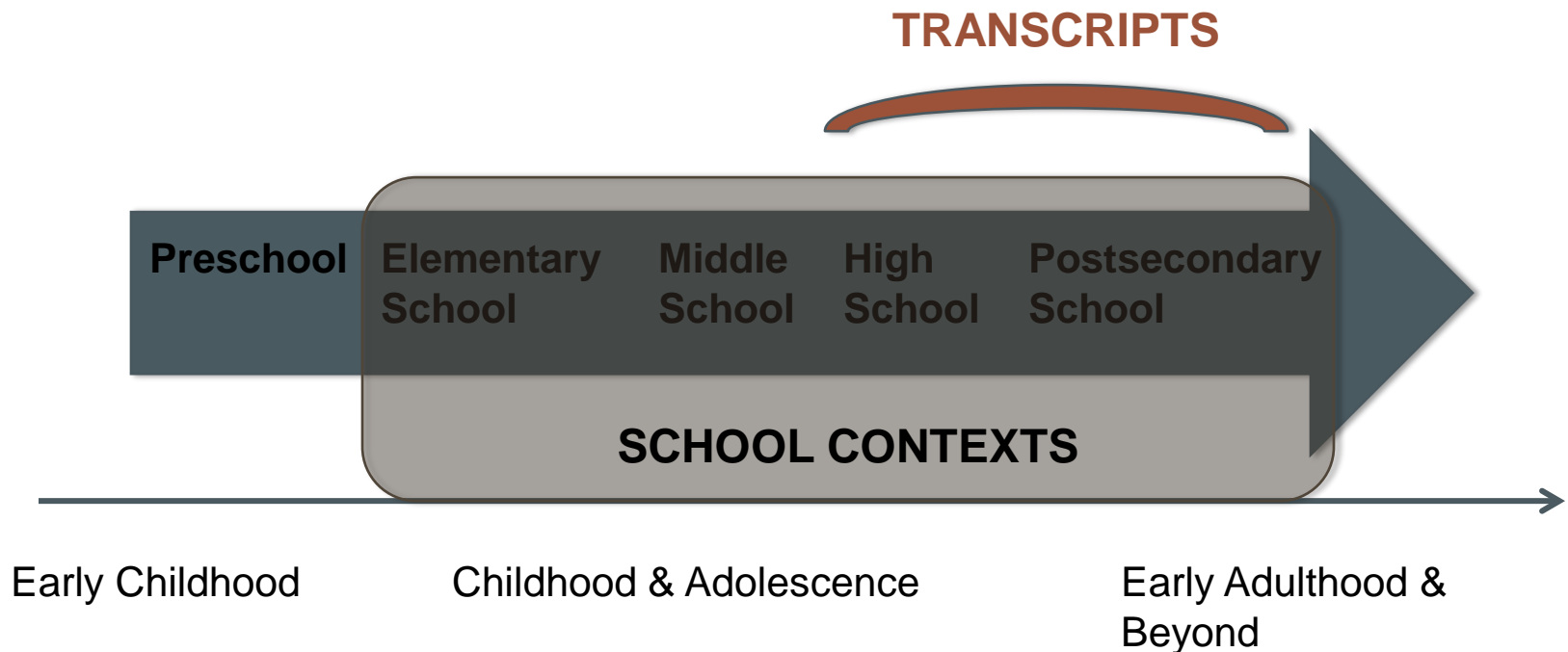




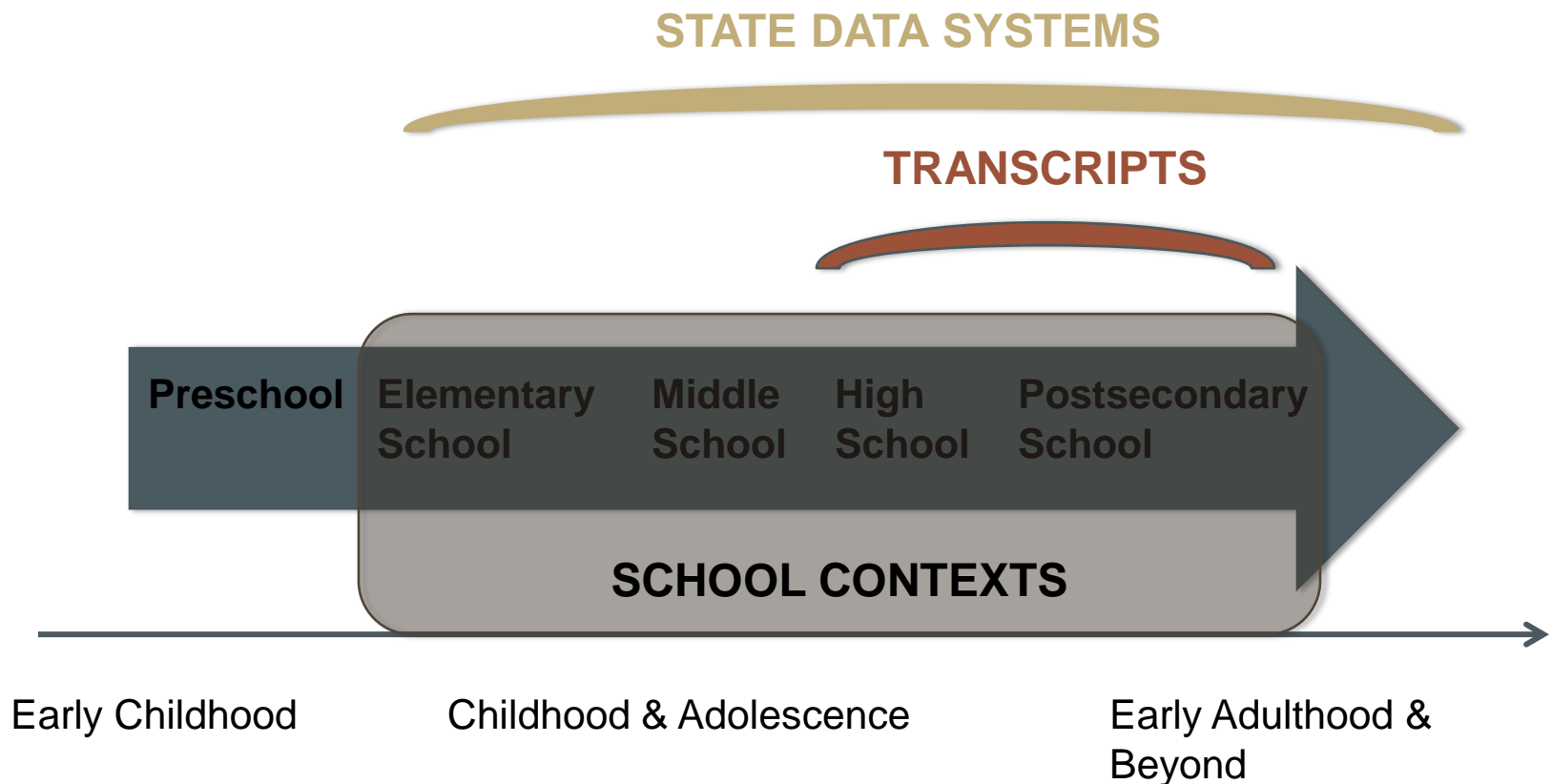
# DATA SOURCES AND THE LIFE COURSE



# DATA SOURCES AND THE LIFE COURSE



# DATA SOURCES AND THE LIFE COURSE



# MEASURING EDUCATION, ACHIEVEMENT & SKILLS

## **Degree Attainment & Years of Schooling**

### **School Qualities**

- K-12 Institutions
- Postsecondary

### **Curriculum**

- Enrollment in school
- Enrollment in courses
- Curricular content of courses
- Academic performance
  - Courses
  - Tests

### **Cognitive and Noncognitive Skills**

# DEGREE ATTAINMENT & YEARS OF SCHOOLING

STATE DATA SYSTEMS

TRANSCRIPTS

Preschl Elemen Middle High Postsec

Early  
Childhood

Childhood &  
Adolescence

Early Adulthood &  
Beyond

**Self-reports**

**Transcripts**

**Administrative data**

- American Council on Education (ACE) for GED
- National Student Clearinghouse (NSC) for postsecondary degrees
- State data systems for K-16 and beyond

**Cautions:**

- Degrees vs. Licenses and Certificates
- Adult education
- Some proliferation of alternative degree programs

# SCHOOL QUALITIES

- **Variation in quality, cost, resources, populations served, student achievement, school organization, staff & faculty**
- **Characterizes opportunities to learn**

## **Sources of information**

### **Kindergarten-Grade 12**

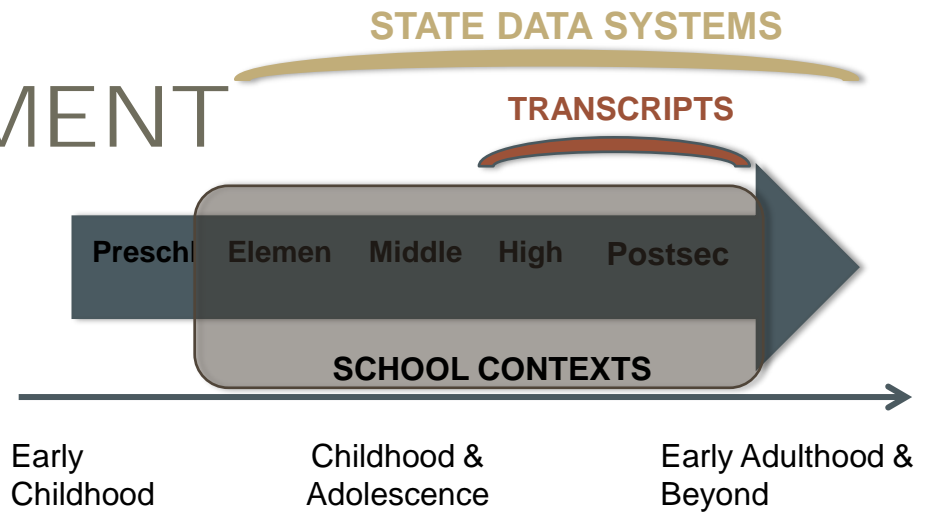
- NCES: Common Core, Private School Study, School District Demographic System & OCR
- Private: QED, ACT, College Board
- States: School accountability, aggregate from individual student data

### **Postsecondary**

- NCES: Integrated Postsecondary Education Data System
- Private: National Student Clearinghouse, Barron's, Princeton Review, U.S. News, etc., ACT and College Board
- States: with complete data systems can estimate flow patterns

**Transcript coding** requires information about course offerings, grading practices

# CURRICULUM: SCHOOL ENROLLMENT



## Source of Information

- Self report
- State data system
- Transcripts (high school, postsecondary)
- National Student Clearinghouse (postsecondary)

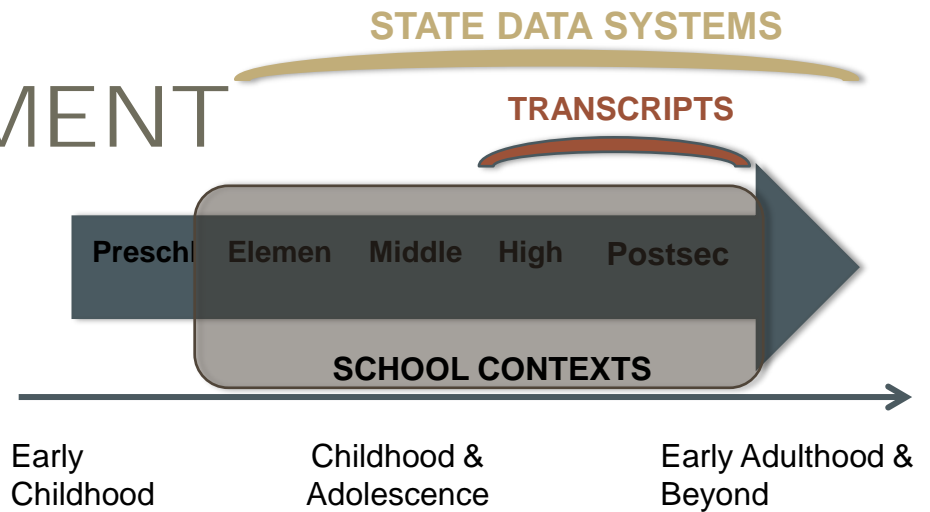
## Patterns of Interest

- K-12: normative, non-normative transitions between schools
- Postsecondary: pathways vary (disrupted enrollment spells, concurrent enrollment, transfer and reverse transfers)

## Cautions

- Data on alternative settings, alternative degree programs is difficult to collect except through self-report

# CURRICULUM: COURSE ENROLLMENT



## Coursework

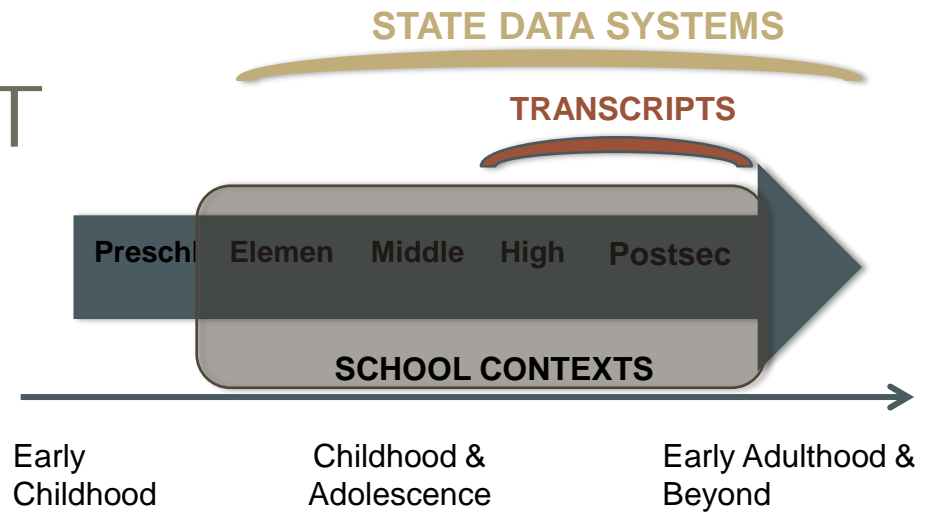
- Organized in chunks
- Courses as the basic building blocks
- Distinguish between credits attempted & credits earned

## Transcripts are the best source of information

- High School
  - Subject specific trajectories across years, college preparatory courses, vocational courses
- Postsecondary
  - Depth (specialization in subject) & breadth (range of subjects) of coursework



# CURRICULUM: COURSE CONTENT



## **Subject areas vary in course demands**

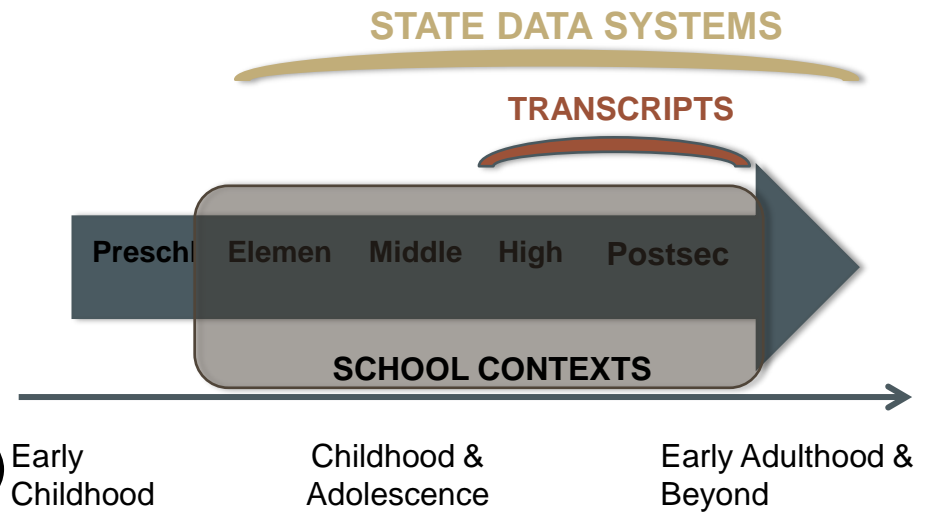
- Rigor
- Analytic
- Rote memorization

## **Requires prerequisites**

## **Aligned with Common Core (for K-12)**

## **Requires specialized coding**

# CURRICULUM: ACADEMIC PERFORMANCE



## Course grades (from transcripts)

- In a single course
- In a set of courses or across years (of high school)
- Failures

## Class rank

## Assessments

- State assessments (usually annual)
- End-of-Course exams (state data, College Board for AP)
- College entrance exams (ACT/SAT/College Board)
- Administered by study

# SKILLS & PERSONALITY

## **Direct measures**

- Aptitude tests
- Personality assessments
- Other noncognitive skills
  - respondent report
  - reports from others about respondent

## **Using data from education**

- Learning rates
  - Across school years
  - As a function of course demands
- Persistence
  - Enrollment stability, academic performance stability

# CONCLUSION

**Increasing variability in educational experiences, particularly at the postsecondary level, requires nuanced measurement of education and skills**

**Education is typically linked to formal institutions thus there are many ways to use of administrative data along with surveys**

**Transcript data is especially promising because it is accurate and held indefinitely**