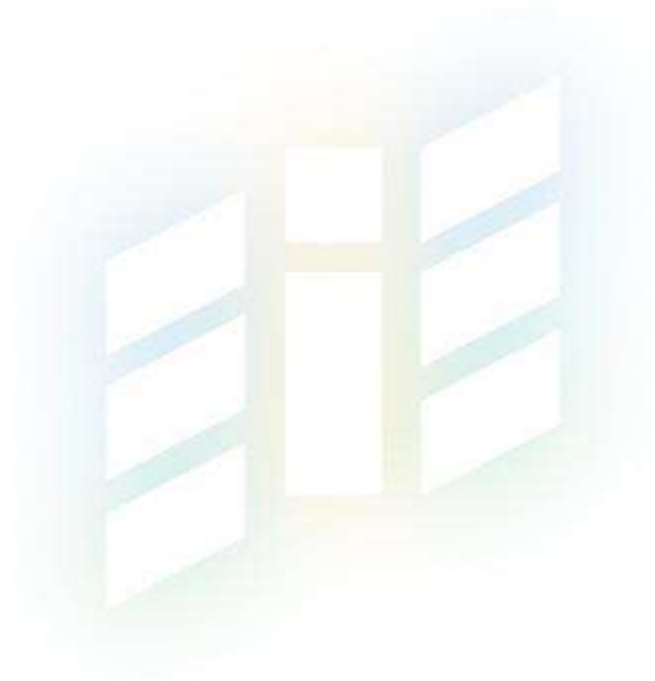




New Brunswick
ENERGY
INSTITUTE

Washington, DC, August 14th, 2013

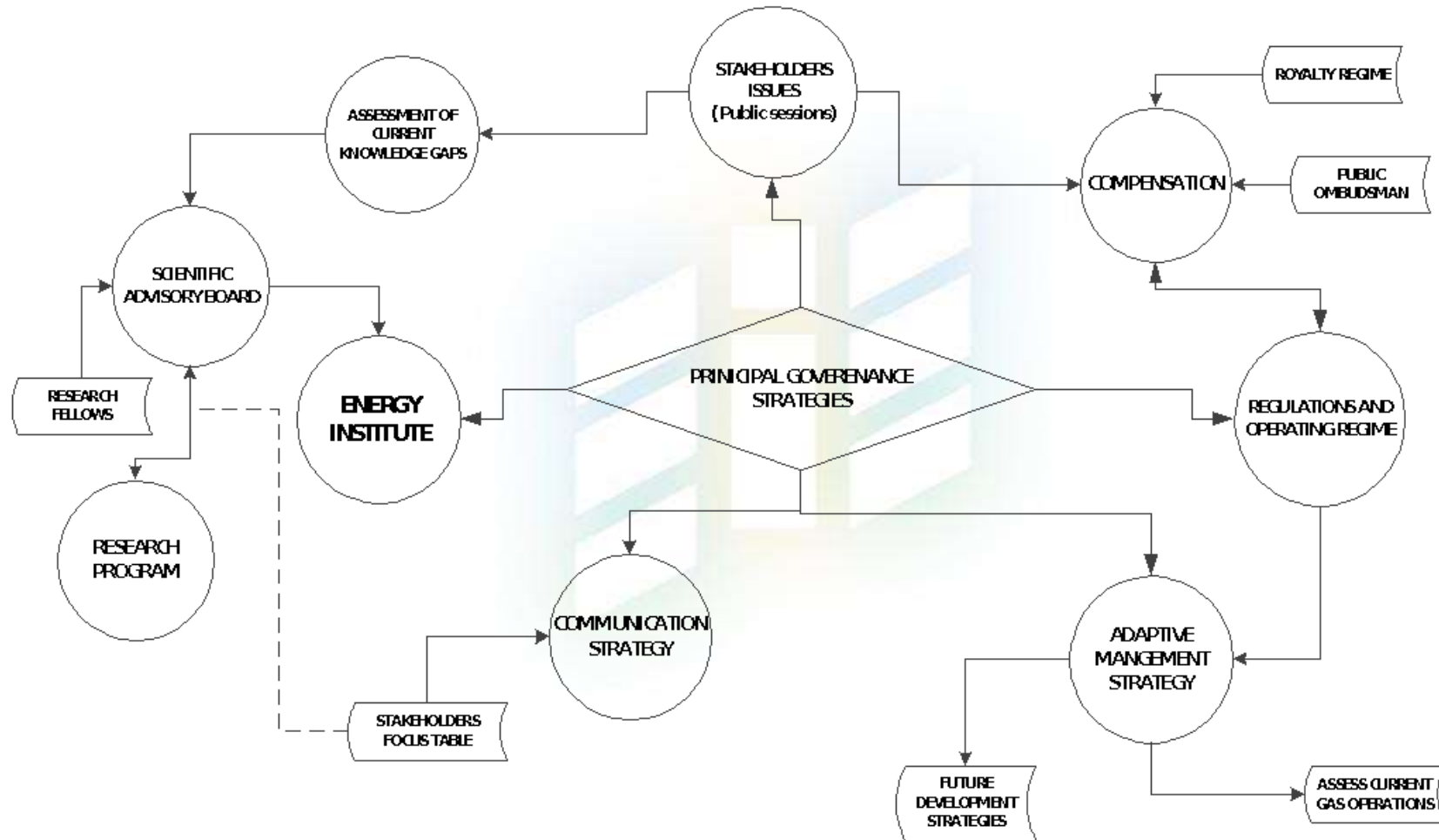
Louis LaPierre C.M, Ph.D
Chair New Brunswick Energy Institute
Louis.lapierre@umoncton.ca



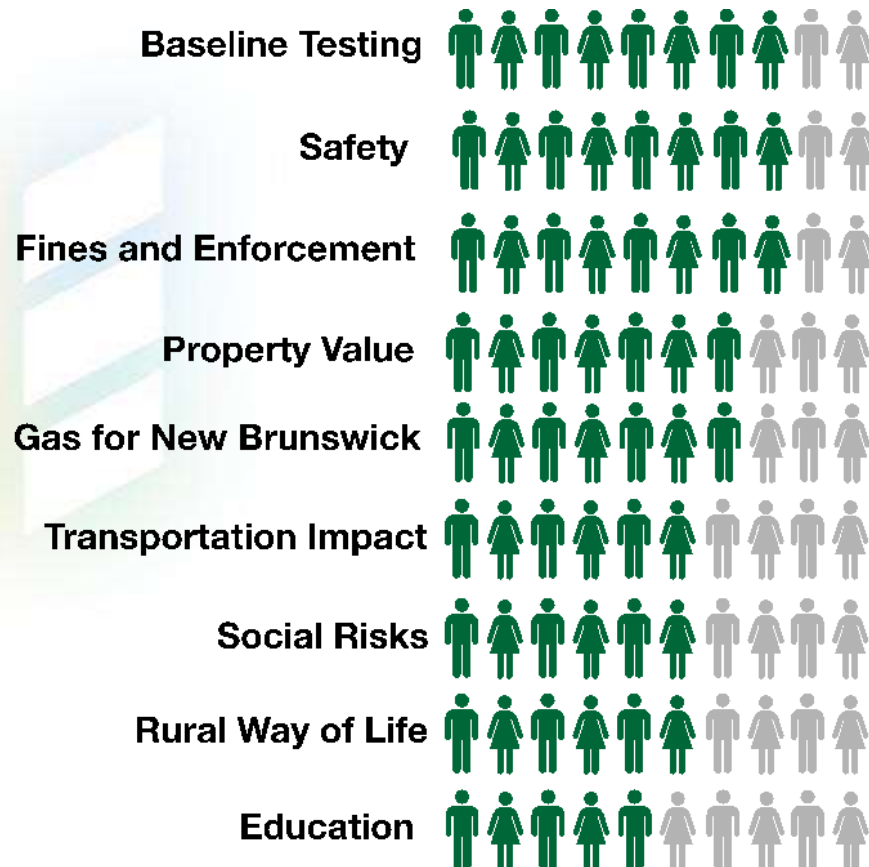
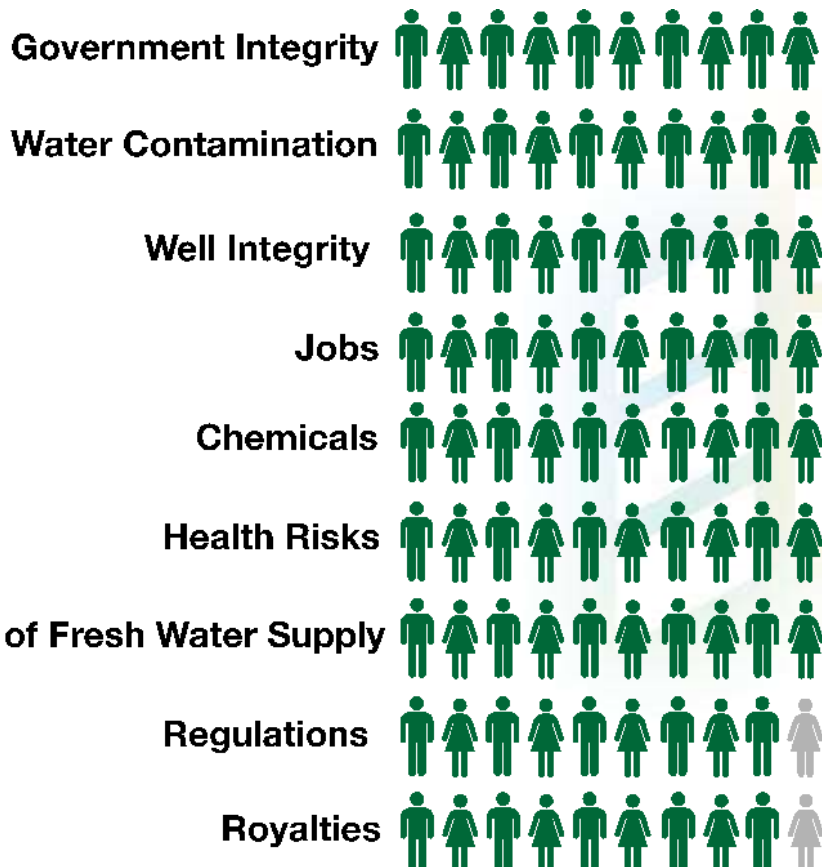
What is the New Brunswick Energy Institute?

- **An independent body separate from government to examine the science surrounding energy development in New Brunswick.**
- **Science evidence based information to support policy decisions**
- **Provides advice to the Minister of Energy and Mines to enhance environmental and medical monitoring and research**

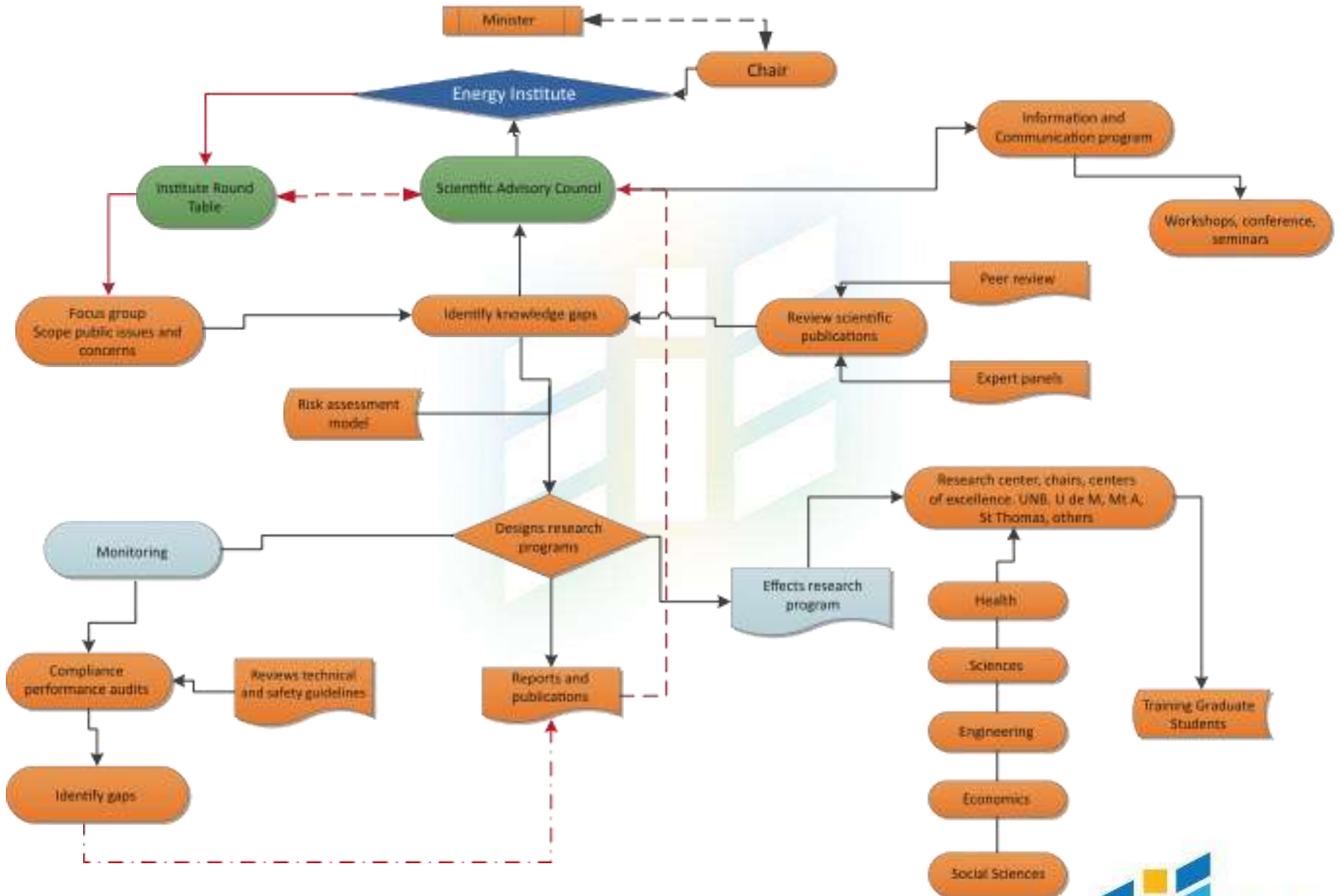
Strategic Components of the New Brunswick Path Forward



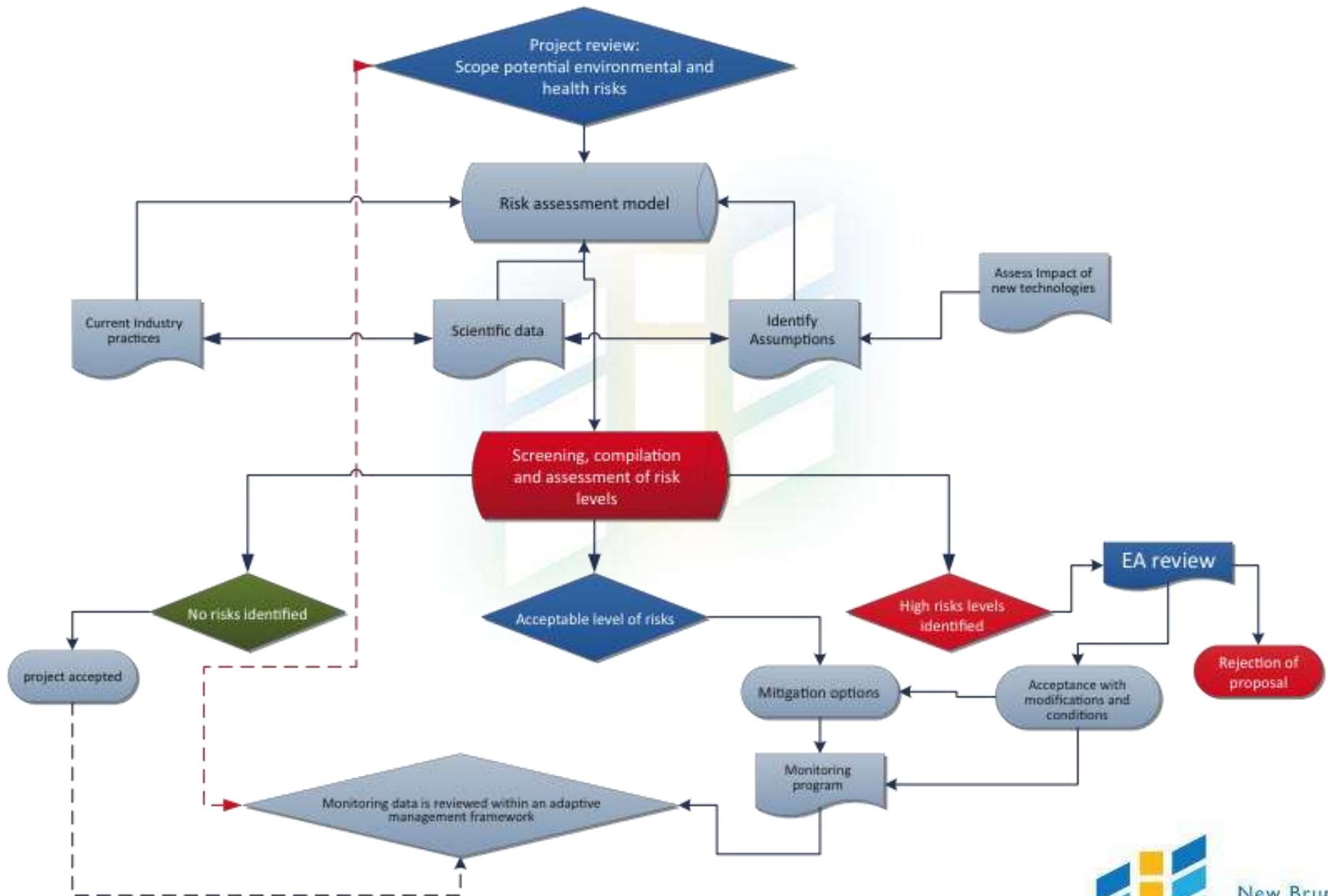
Main Issues from public forum



Energy Institute Organization



Environment and Health Risk Assessment Model



Scientific Advisory Council

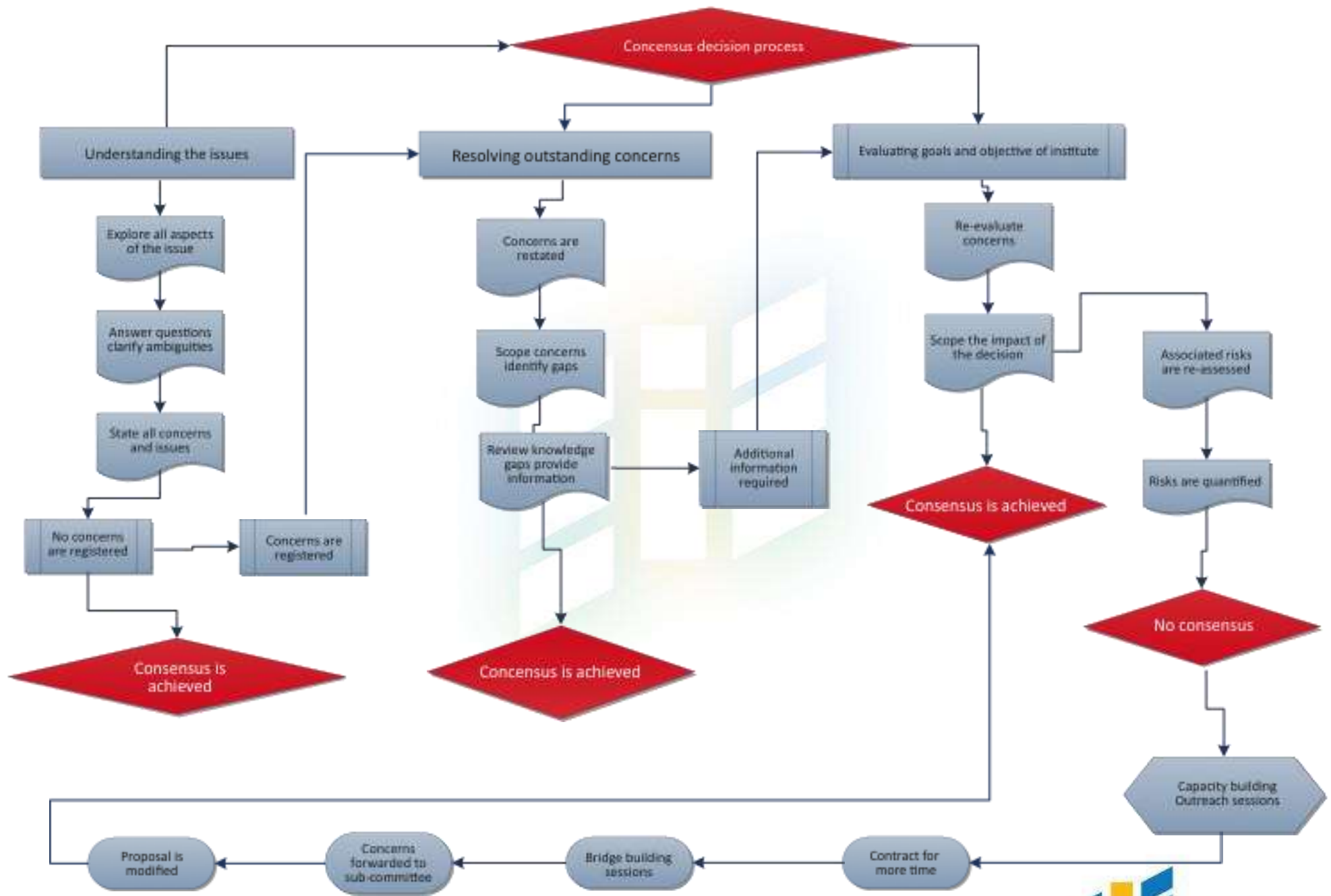
- **Executive Body of the Institute**
- **Initiate and provide direction of research and monitoring activities**
- **Ensure scientific accuracy and integrity of Institute reporting through peer review**
- **Provide scientific and relevant information to New Brunswickers**

Institute Fellows

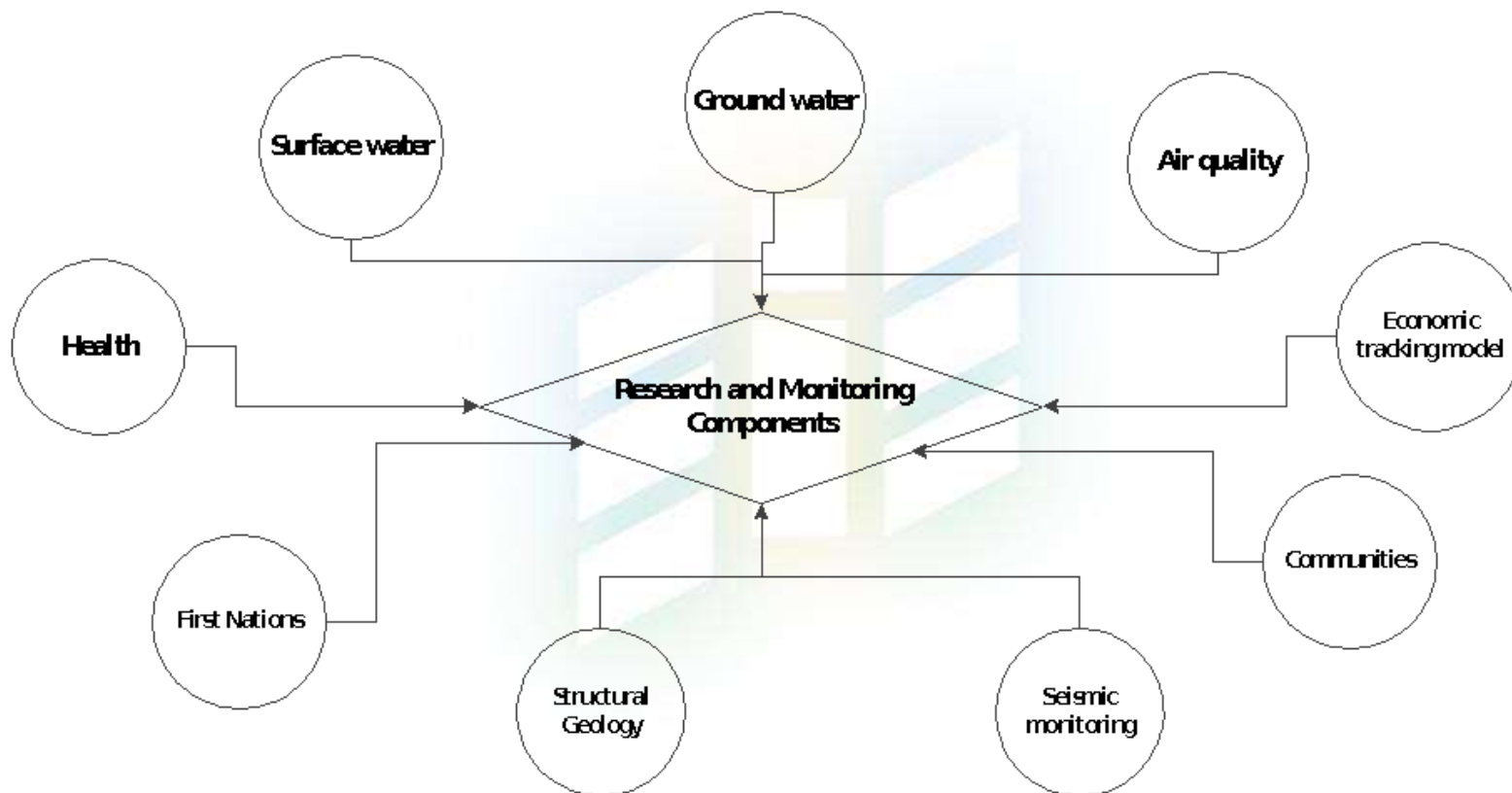
- **Researchers with experience in energy development and expertise in shale gas fracking.**
- **Representation from Canadian and US Universities as well as private research agency.**
- **They will provide technical expertise to the SAC and serve on technical panel**
- **Currently 14 members representing a wide range of expertise.**

Energy Roundtable Focus Group

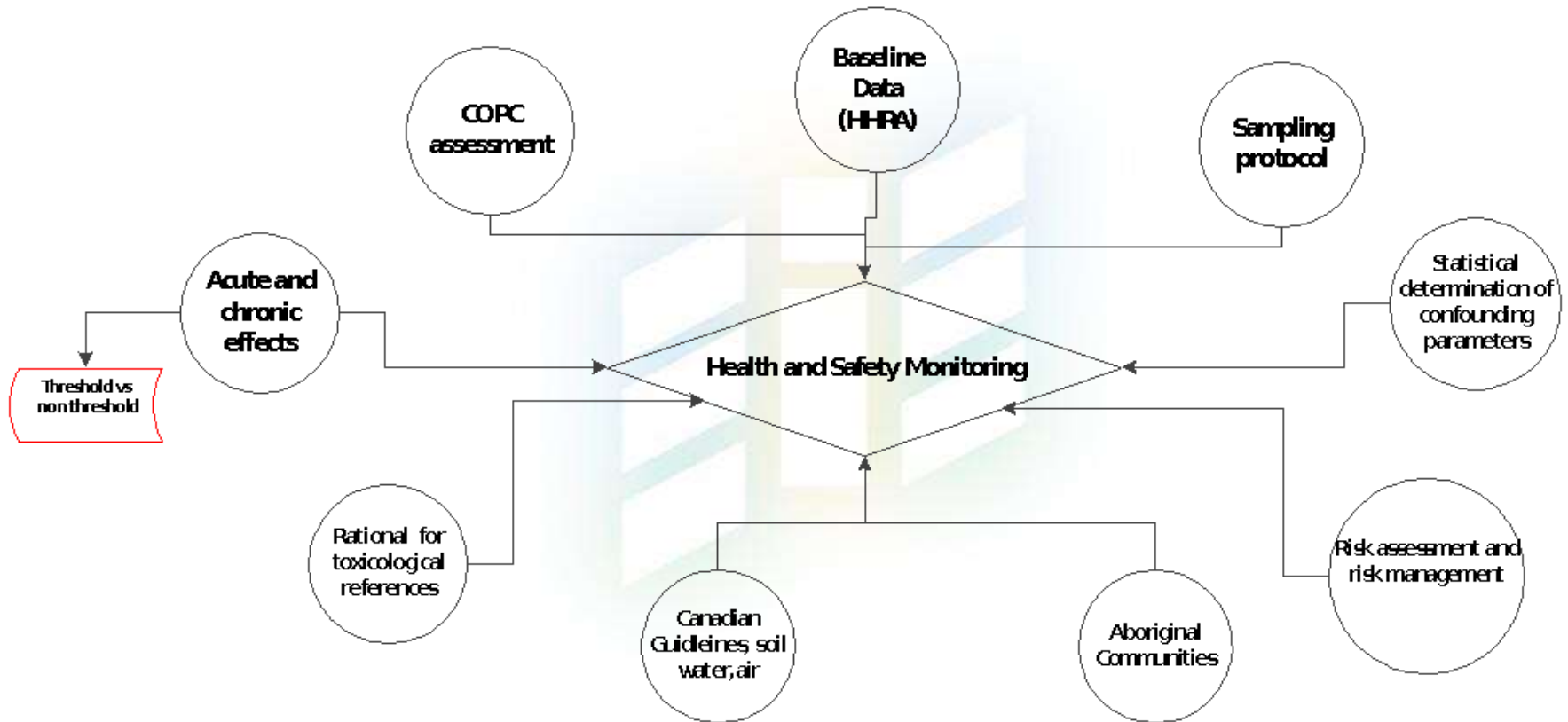
- Provide forum for discussion on issues associated with energy development in New Brunswick
- Representatives from the following:
 - Aboriginal Representation
 - Business Community
 - Oil and Gas Industry
 - Municipal Government
 - Regional Government
 - Environmental Representation
 - Citizens at Large
 - Rural Community
 - Health Practitioners
 - Representative of Oil and Gas Trades
 - Technical/Community College Institutions
 - Work Safe NB



Energy Institute Health and Environment Monitoring Research Model



Energy Institute: Health and Safety Monitoring Model



Thank You



Thank You