

COMMUNITY FORESTS

Forestland ownership and climate change



Washington, D.C.
Martha West Lyman
August 26, 2013
email: marthawlyman@gmail.com

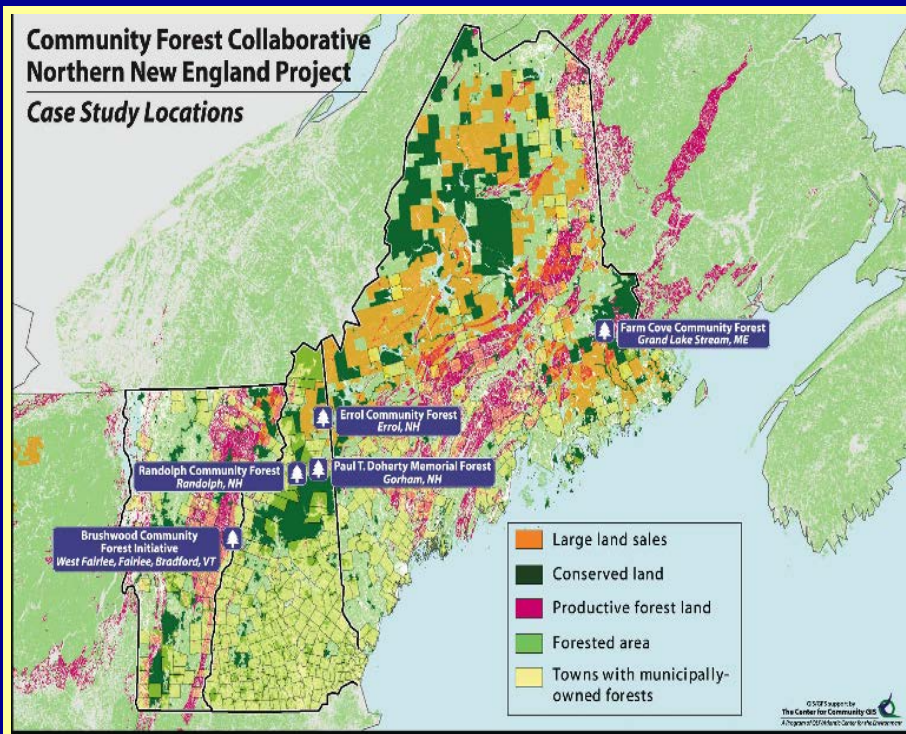
Ownership Models

- Local Government and Tribal
 - Randolph, NH; Arcata, CA; Hoke County, NC; Klamath Tribe, ID; Nulheganaki, Barton, VT
- Non-Profit:
 - Elk Creek Conservation Area, MT; Blackfoot Community Conservation Area, MT; Usal Redwood Forest, CA; Downeast Lakes Land Trust/Farm Cove Community Forest, ME
- Other:
 - Little Hogback Community Forest, VT – private LLC
 - Weaverville Community Forest, CA – long-term stewardship contract with BLM
 - International Indigenous and Community Conserved Areas (ICCAs)

COMMUNITY FORESTS AND CLIMATE CHANGE

- FOREST FRAGMENTATION
- FOREST MANAGEMENT
- ECONOMIC OPPORTUNITIES

COMMUNITY FOREST COLLABORATIVE



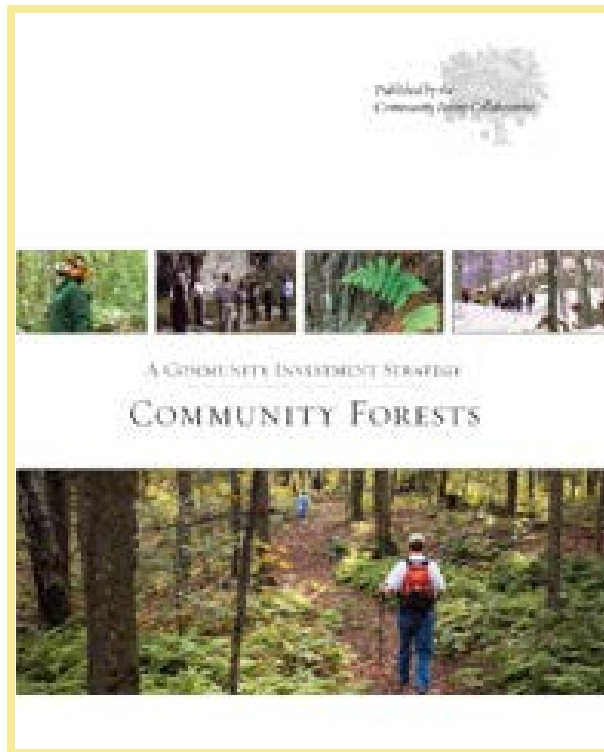
- Created in 2005
- Partners include:
 - The Trust for Public Land
 - The Northern Forest Center
 - Sustainable Forest Futures
 - Quebec-Labrador Foundation
- Operates in Vermont, New Hampshire, and Maine

Community Forest Model

- ✓ Community ownership
- ✓ Community participation in management
- ✓ Access to benefits and value from the forest that support other priorities
- ✓ Permanent protection

COMMUNITY FORESTS:

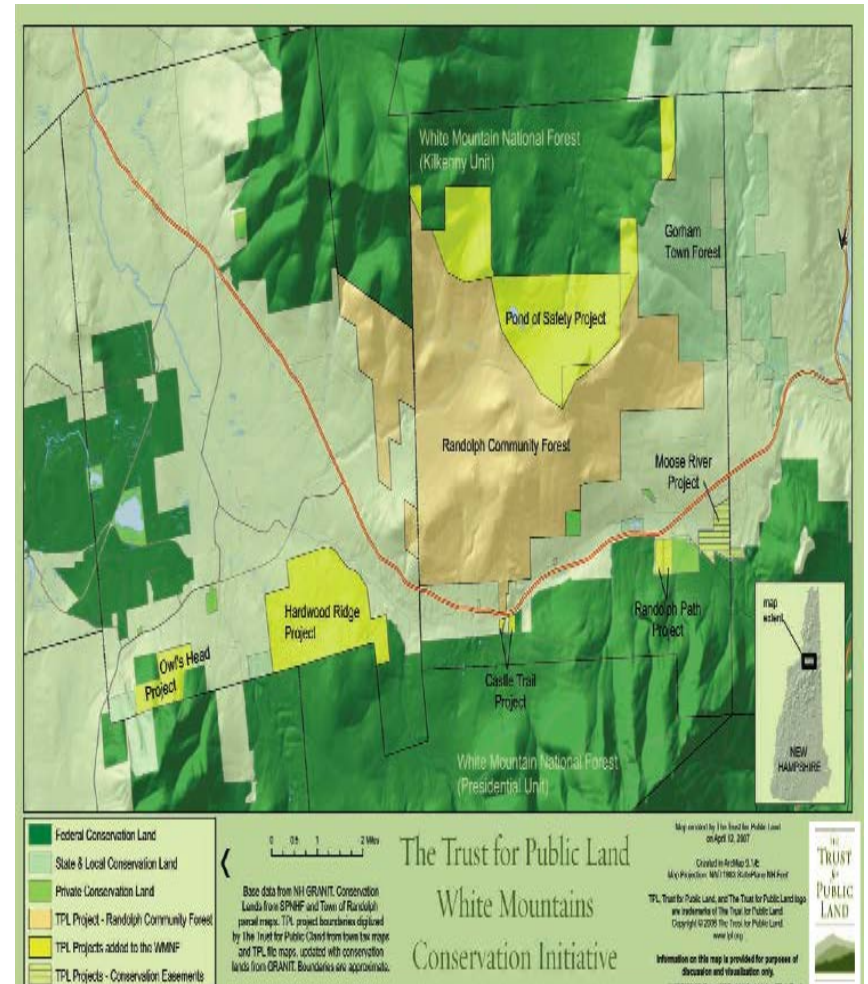
A COMMUNITY INVESTMENT STRATEGY



- COMMUNITY WELL-BEING
- CIVIC LIFE
- ECONOMIC OPPORTUNITY
- CONSERVATION

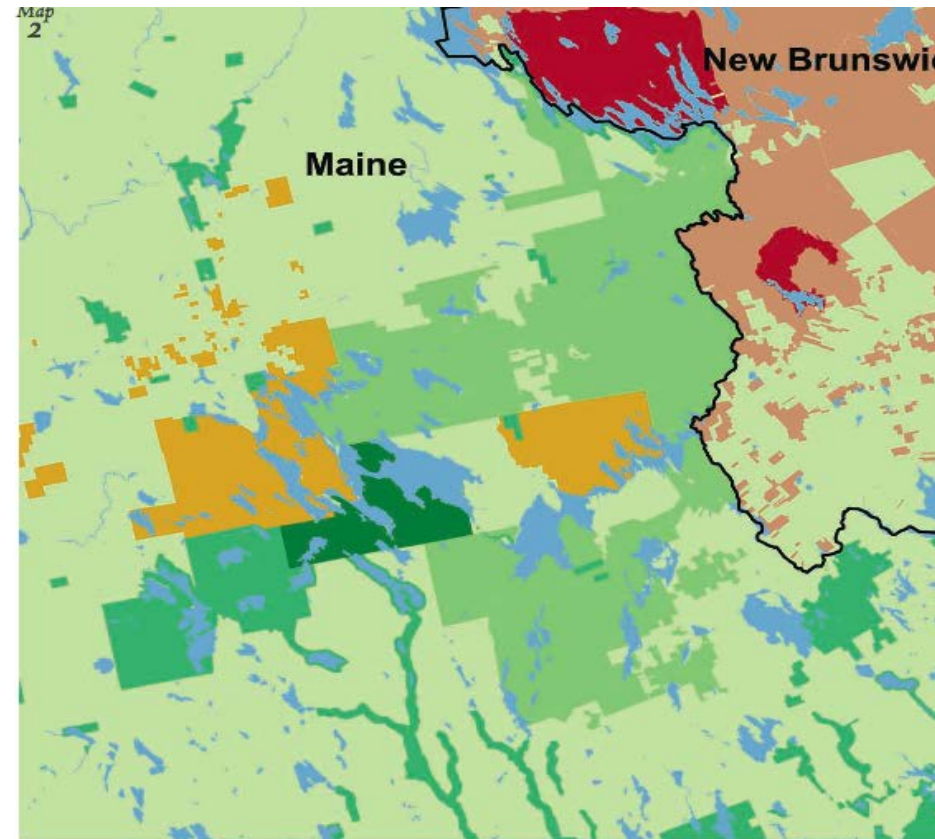
Randolph Community Forest

- 10,200 acres
- Links two segments of the White Mountain National Forest
- Cooperative management across ownerships
- Wildlife management/monitoring
- Public programs on forest management



Farm Cove Community Forest

- Downeast Lakes Land Trust
- 33,708 acres
- Component in 1.4 million acre international wildlife corridor
- Buffers ecological reserve
- Collaborative forest management across ownerships
- Public engagement in forest management practices



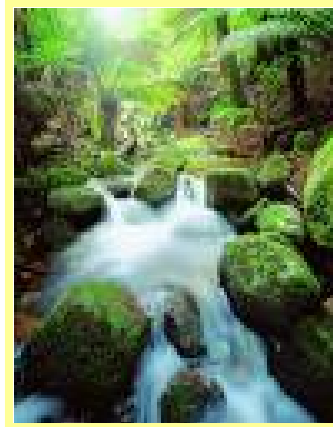
- DLLT Farm Cove Community Forest
- NEFF Wagner Easement
- Maine Conservation Land
- Native American
- New Brunswick Protected Areas
- New Brunswick Crown Lands

Map by DLLT 3/29/07
Data from Maine OGIS, NEFF, TNC, & Service NB

0 5 10 20 Miles

Economic Opportunities

Ecosystem
services



Local
value-added
enterprises



Forest
products



Open
space and
recreation



Farm Cove Community Forest Carbon Offset Project

Partnership of Downeast
Lakes Land Trust (DLLT) and
Finite Carbon

19, 118 Acres

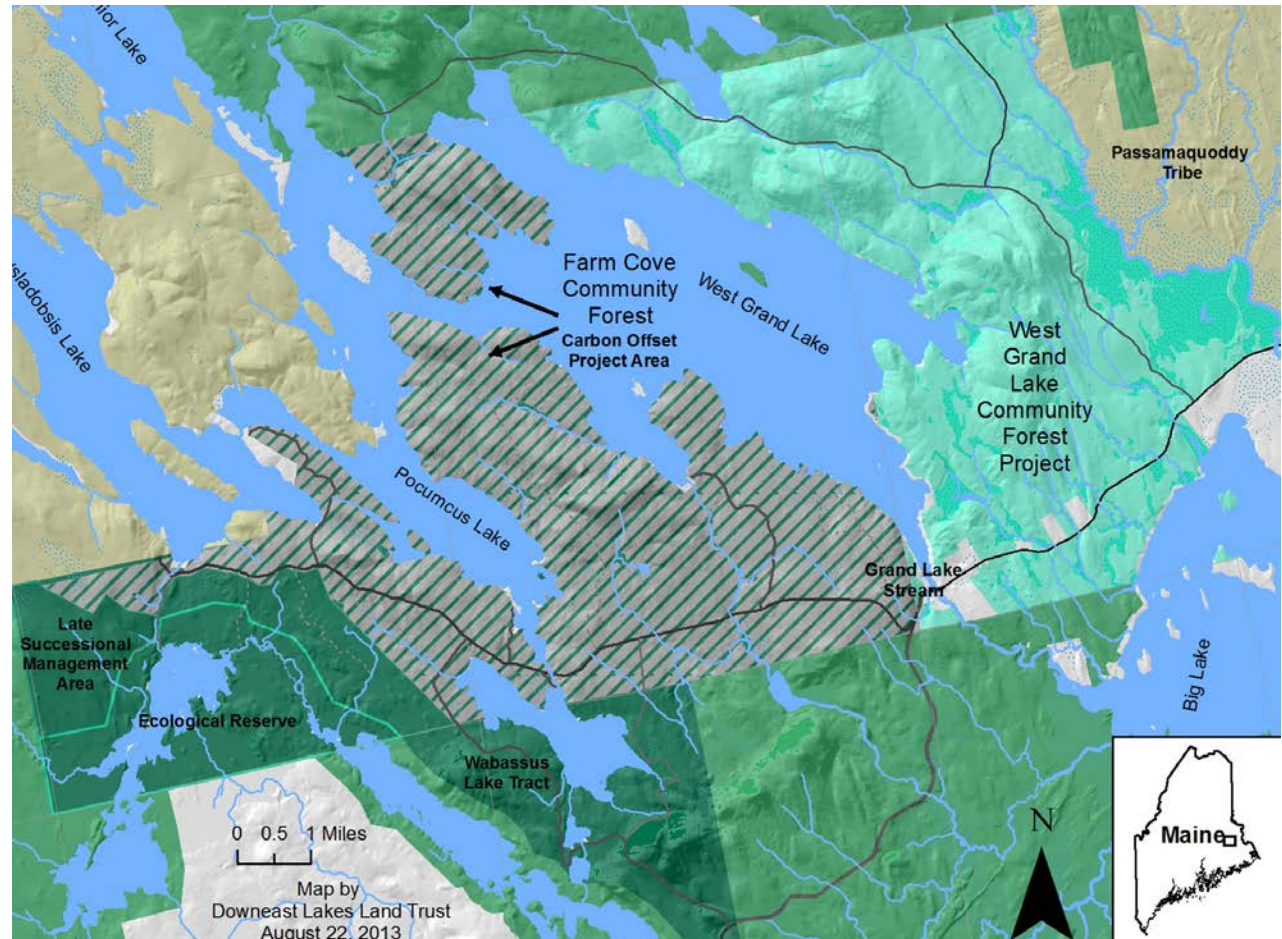
Registered with Climate
Action Reserve (CAR)

Transitioning to California Air
Resources Board (ARB)

200,000 initial carbon offsets

DLLT to apply revenue toward
purchase of planned West
Grand Lake Community Forest

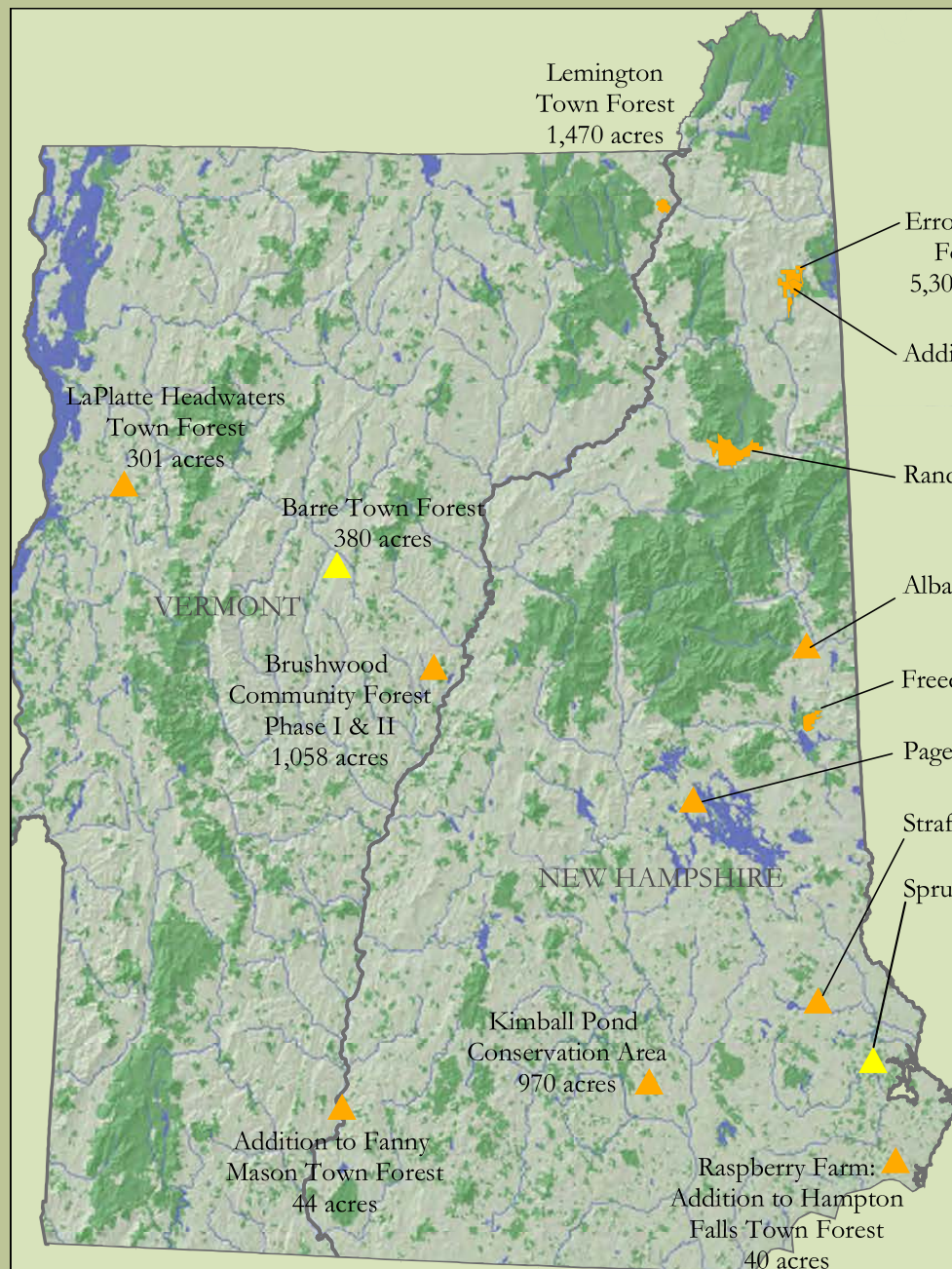
Map credit and information:
Downeast Lakes Land Trust
www.downeastlakes.org






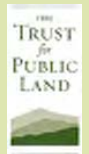
The Trust for Public Land's Community Forest Projects

2002-2012

25,586 acres protected



-  Community Forests in Progress
-  Community Forests Created by The Trust for Public Land
-  Public & Private Conservation Land



Created by Trust for Public Land on 11/6/12. Boundaries are approximate. Information on this map is provided for purposes of discussion and visualization only.



**Northern
Forest Center**
Thriving Communities
& Healthy Forests

Community Forests

Generating economic and social benefits for communities, while conserving forestland

Principles

- Owned and Managed on behalf of a community
- Acquisition process and management structure ensures community participation and responsibility
- Community has access to value and benefits of the forest
- Conservation values of forestland protected by conservation easement and sustainable forest management practices

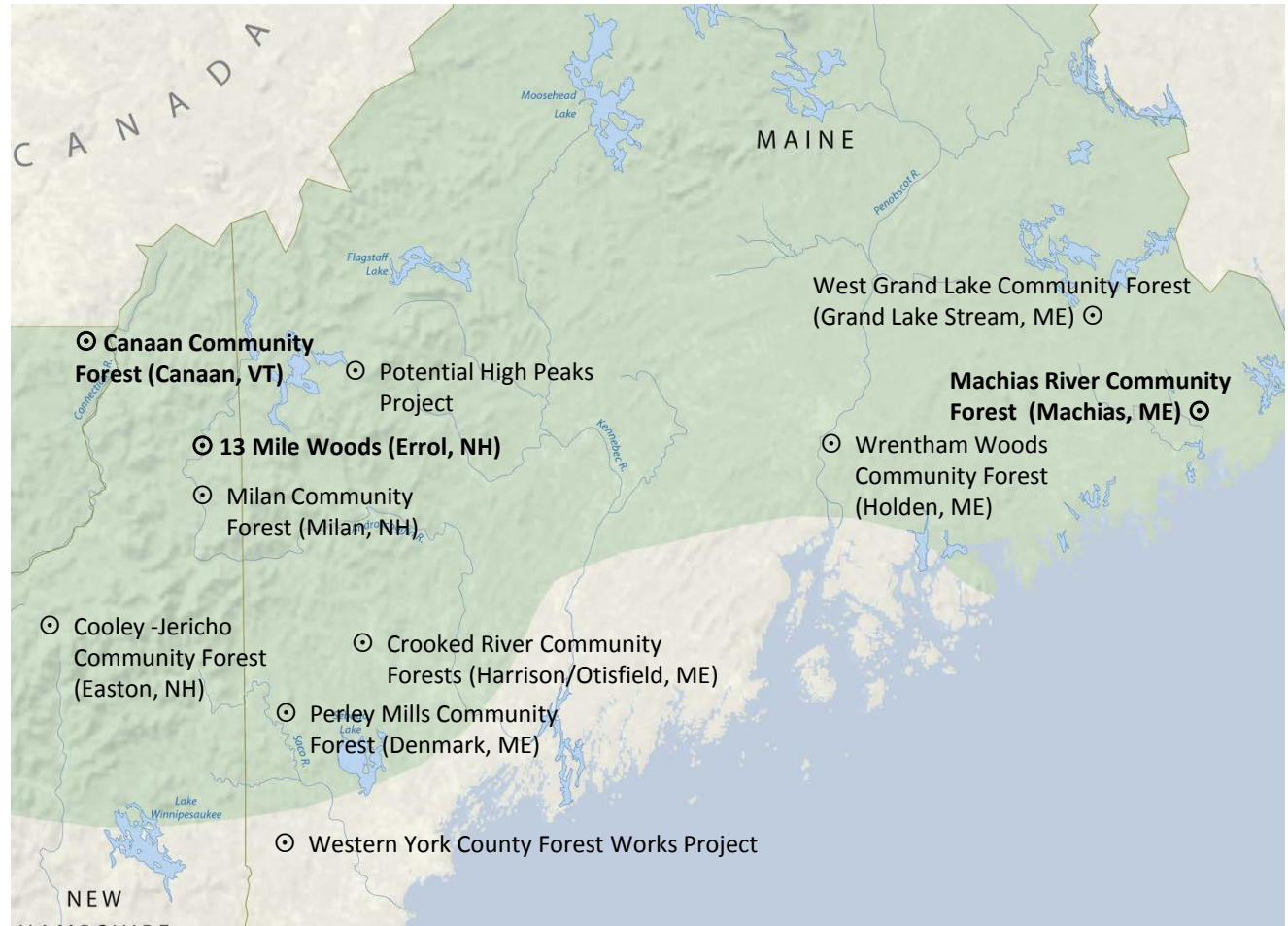
Collaborative Partners

- Trust for Public Land
- Quebec Labrador Foundation

Value of a Community Forest

- Fills in mosaic of conservation strategies by connecting other easements
- Engages a broader set of stakeholders and resources than state and federal government alone
- Potentially important component of economic development in expanding assets of the community, protecting ecological services, and providing a resource base for economic activity

***Projects in bold on map are completed**



NEW SUPPORT

OPEN SPACE INSTITUTE/COMMUNITY FOREST FUND

- \$1.4 MILLION
- 2 GRANT ROUNDS
- GRANT SUPPORT/CAPITAL
- 7 PROJECTS

USFS/COMMUNITY FOREST PROGRAM

- \$3.5 MILLION
- 1 GRANT ROUND
- GRANT SUPPORT/CAPITAL
- 10 PROJECTS

Contacts

- Community Forest Collaborative

Julie Renaud Evans

email: jevans@northernforest.org

Rodger Krussman

email: Rodger.Krussman@tpl.org

References

- **Publications:**

- Christoffersen N, D. Harker, M. Lyman M, and B. Wyckoff. 2008. The status of community-based forestry in the United States: A Report to the U.S. Endowment for Forestry and Communities. U.S. Endowment for Forestry & Communities, Inc, Greenville, SC. <http://www.usendowment.org/publications>.

- Communities Committee. 2008. Introduction to community-owned forests: a quick guide. http://www.communitiescommittee.org/pdfs/CommunityOwned_Forests_Quick_Guide.pdf

- Community Forest Collaborative. 2007. Community Forests: A Community Investment Strategy. Prepared by M. Lyman for the Community Forest Collaborative. <http://www.tpl.org/publications>.

- Community Forest Collaborative. 2011. Community Forests: Needs and Resources for Creating and Managing Community Forests. Prepared by M. Lyman, J. Renaud-Evans and M. Mytar. www.tpl.org/publications/books-reports/community-forest-rpt-2011.

- Lyman, M. (2008). Community Ownership and Equity: A Case Study of the Little Hogback Community Forest, Monkton, Vermont. In Christoffersen et.al., The State of Community Forestry in the United States. A Report to the US Endowment for Forestry and Communities, Inc. (appendices). Greenville, SC. http://www.usendowment.org/images/CS6_Little_Hogback_2_.pdf

- Weinberg, A and C. Larson 2008 Forestland for sale: Challenges and Opportunities for the Next Ten Years. Open Space Institute. New York, NY

- Willcox, D. 2004. The Story of the Randolph Community Forest: Building on Local Stewardship. In Natural Resources as Community Assets: Lessons from two continents. ed. Brian Child, and Martha Lyman. Sand County Foundation/Aspen Institute. <http://www.sandcounty.org/publications>

- **Websites:**

- **Community Forest Collaborative (websites for Northern Forest Center and Trust for Public Land)**

- www.northernforest.org/Community_Forest_Collaborative

- www.tpl.org/what-we-do/where-we-work/new-hampshire/community-forests

- **Open Space Institute/Community Forest Fund**

- http://www.osiny.org/site/PageServer?pagename=Issues_Forests_More&AddInterest=1362

- **USFS/Community Forest Program**

- <http://www.fs.fed.us/spf/coop/programs/loa/cfp.shtml>

- **Downeast Lakes Land Trust**

- www.downeastlakes.org