

Evaluations

Outline of remarks:

1. Overview of field tests and evaluations
2. Mapped SIPP (MSIPP)
3. Evaluation of 2011 and 2012 SIPP-EHC
4. In-progress evaluation work
5. Evaluating 2014 SIPP

Overview of field tests and evaluations

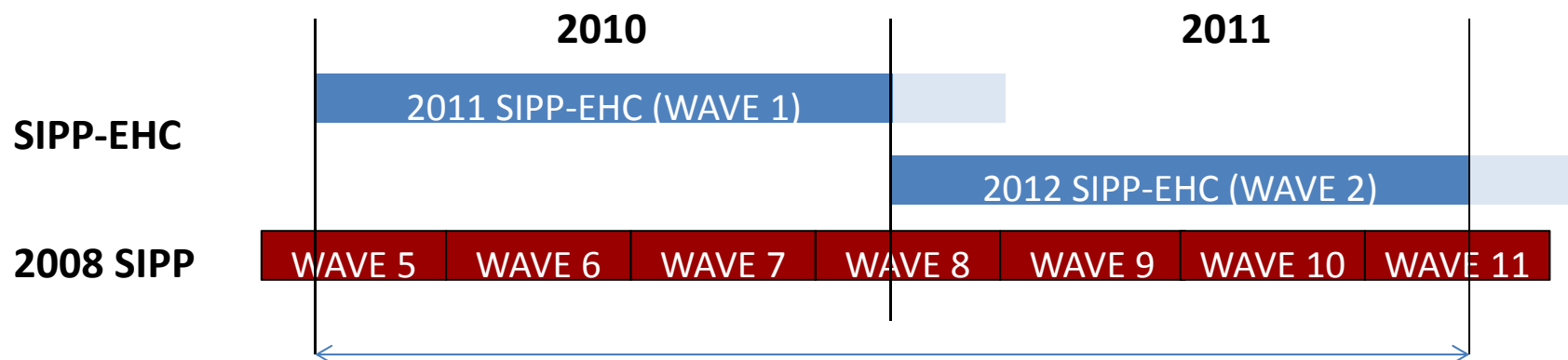
- Field Tests
 - Paper Test
 - 2010 SIPP-EHC
 - 2011-2013 SIPP-EHC
- Evaluations
 - Topic specific evaluations
 - Multi-topic evaluations
 - Comparisons to micro-level admin data
 - Analysis of para-data
 - Evaluations of recorded interviews

Evaluations

Outline for remarks:

1. Overview of field tests and evaluations
- 2. Mapped SIPP (MSIPP)**
3. Evaluation of 2011 and 2012 SIPP-EHC
4. In-progress evaluation work
5. Evaluating 2014 SIPP

Conceptual illustration of 2011 MSIPP



ID	PANEL	YEAR	MONTH	SNAP	SNAP_AMT	SNAP_ADMIN	SNAP_AMT_ADMIN
1234	2011 SIPP-EHC	2010	2	1	\$150	1	\$165
5678	2008 SIPP	2010	2	0	.	1	\$137
⋮	⋮	⋮	⋮	⋮	⋮	⋮	⋮

Three MSIPP editions

Name of file	Calendar years	Waves of 2008 SIPP	Data from New SIPP	Nation-wide sample	Number of topics	Amount variables	Imputation of missing data	Linked admin data
2010 MSIPP	2009	2-5	2010 SIPP-EHC	No	8	No	No	Medicare, OASDI, SNAP, SSI, W2s
2011 MSIPP	2010-2011	5-11	2011-2012 SIPP-EHC	No	19	Yes	No	Medicaid, Medicare, OASDI, SNAP, SSI, TANF, W2s,
2014 MSIPP	2013	14-16	2014 SIPP	Yes	All?	Yes	Yes	Based on availability

Evaluations

Outline for remarks:

1. Overview of field tests and evaluations
2. Mapped SIPP (MSIPP)
- 3. Evaluation of 2011 and 2012 SIPP-EHC**
4. In-progress evaluation work
5. Evaluating 2014 SIPP

Topics in 2011 MSIPP dataset

Topics with administrative records

Employment and earnings
Medicaid (12 out of 20 states)
Medicare
OASDI
SNAP (NY state)
SSI
TANF (NY state)

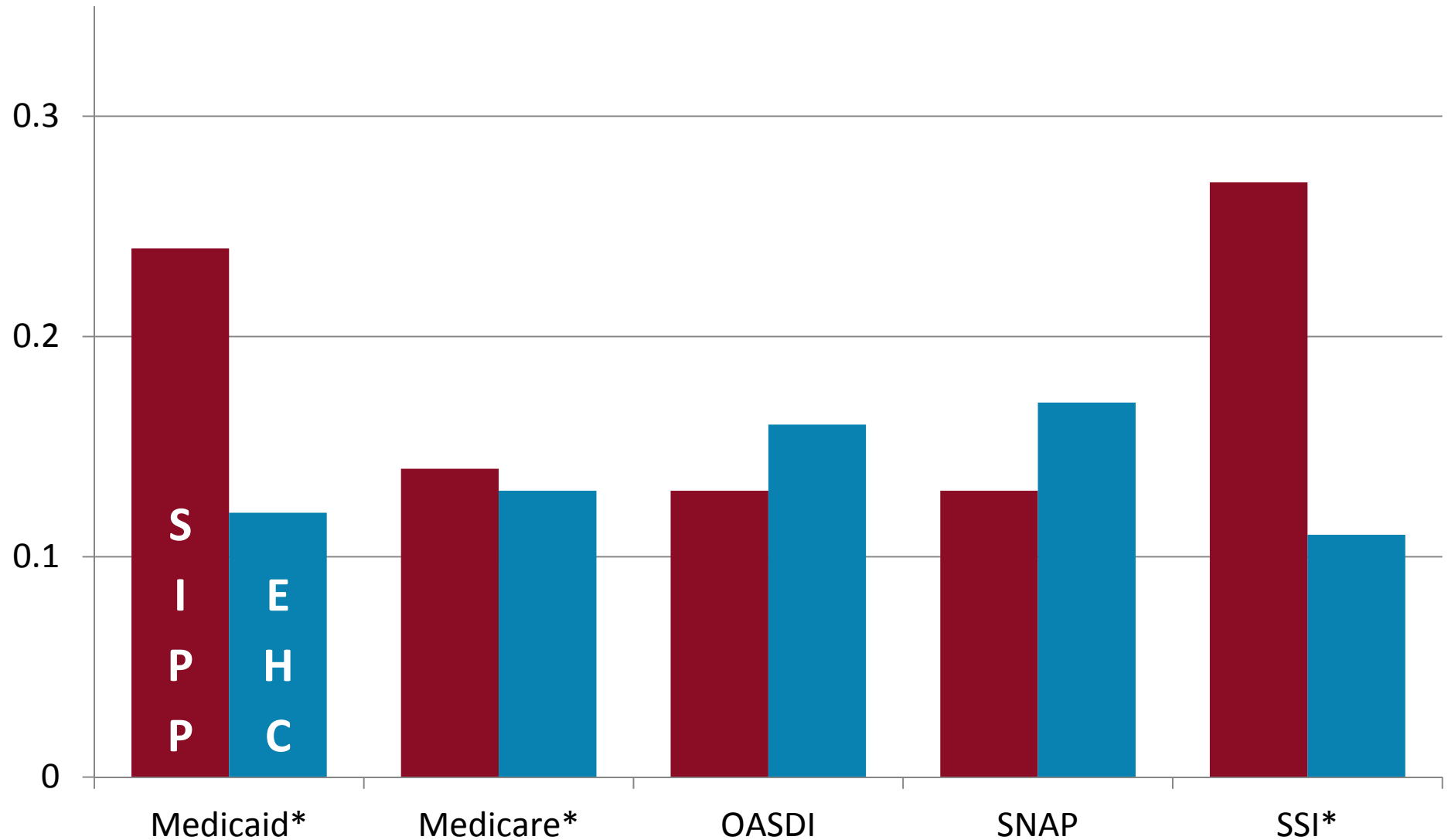
Topics without administrative records

Asset ownership	Housing subsidies
Child support	Citizenship
Disability	Poverty
Education	Residence
Health insurance	
Household composition	
Unemployment Insurance	

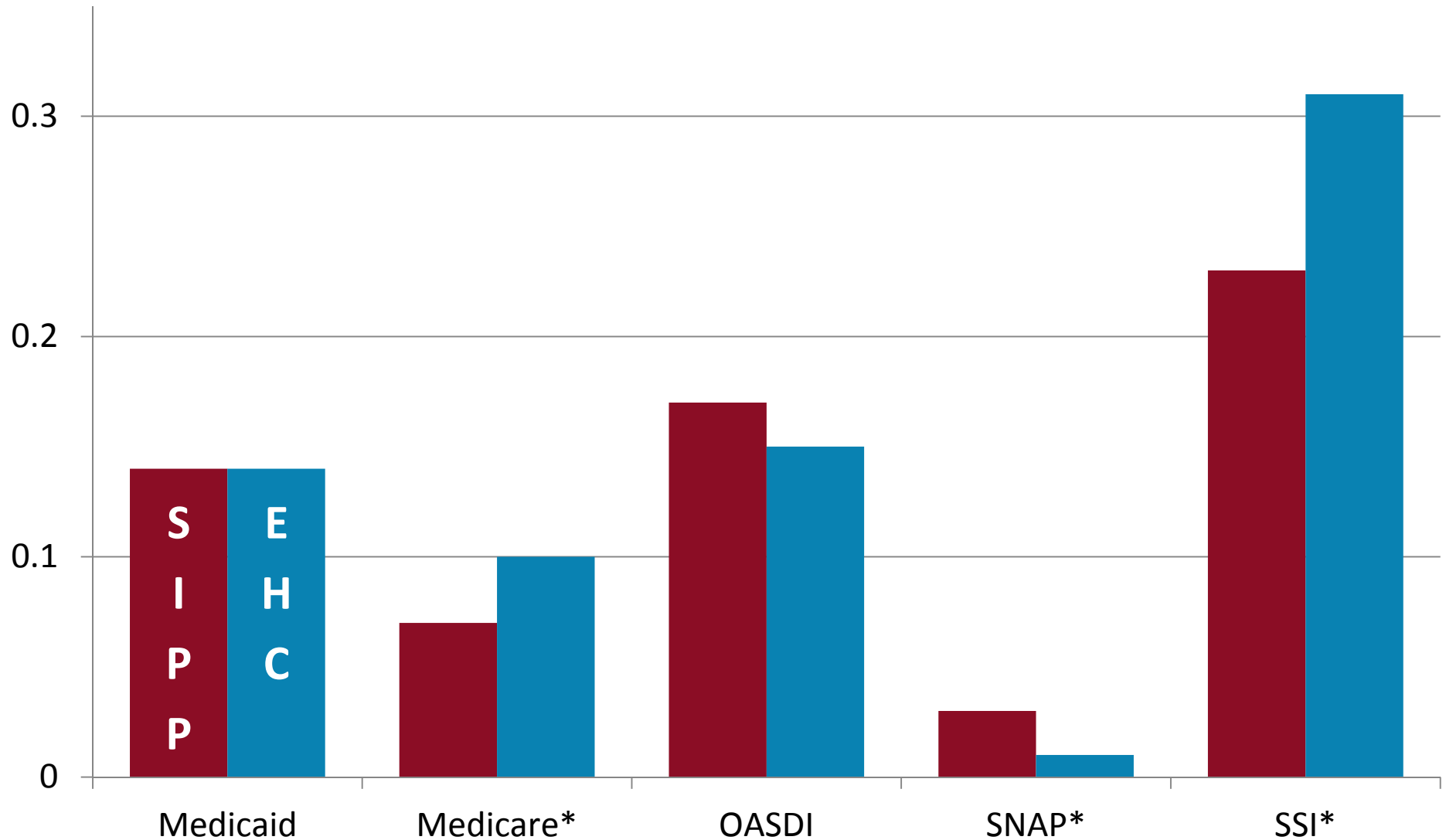
False negatives and false positives

		Survey Data	
		Yes	No
Administrative Data	Yes	True Positive	False Negative
	No	False Positive	True Negative

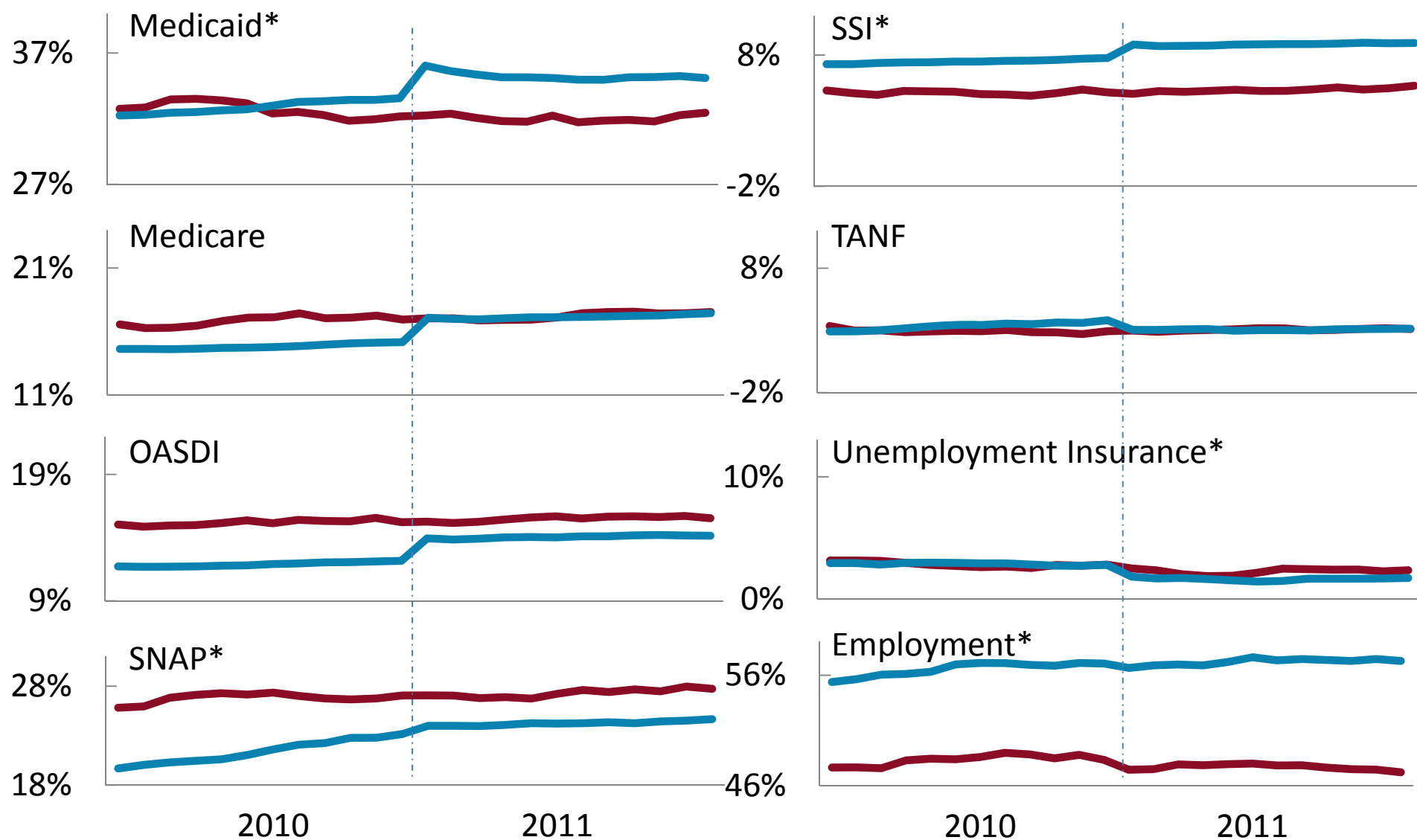
False negative rates for CY2011



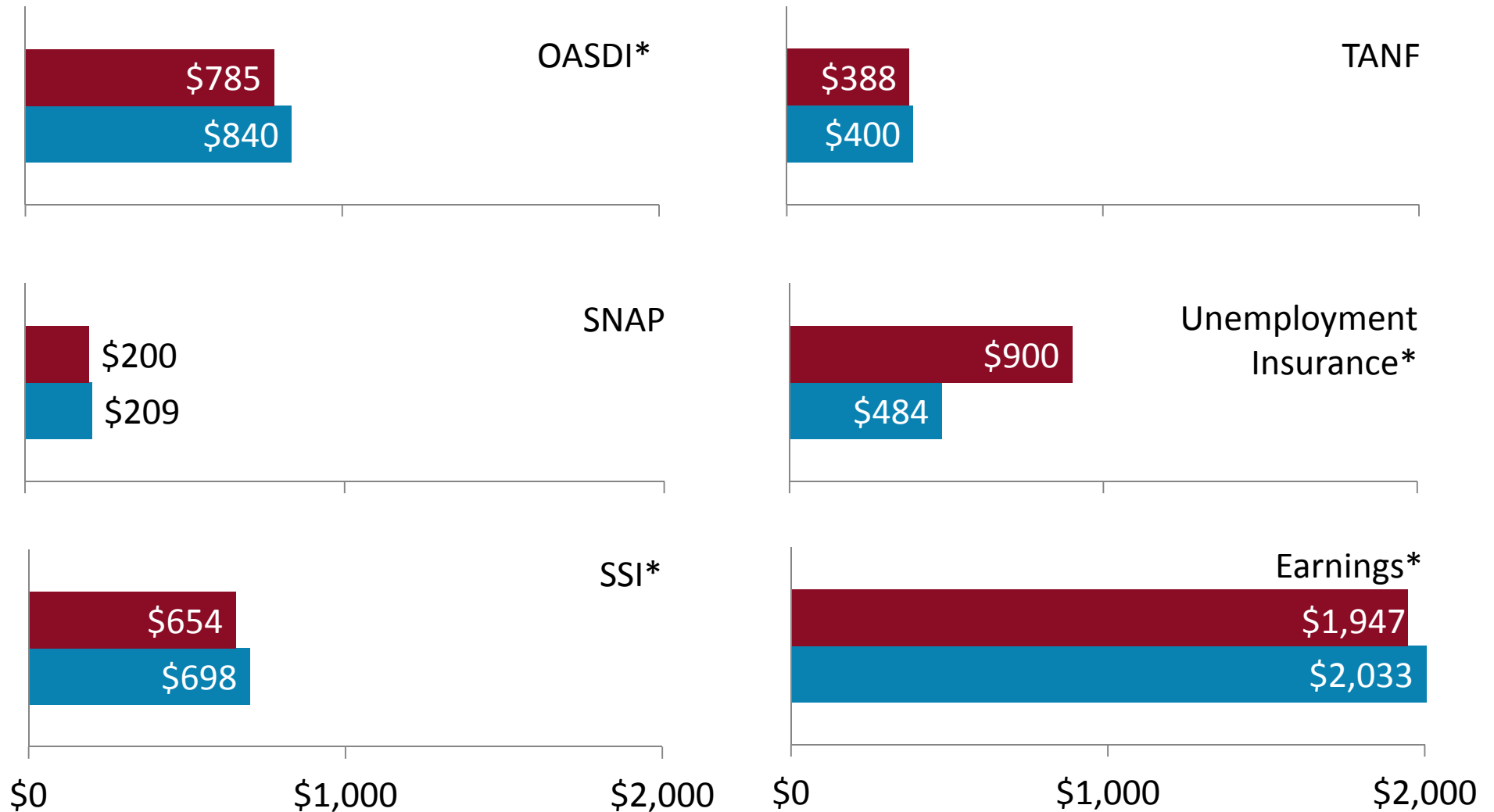
False positive rates for CY2011



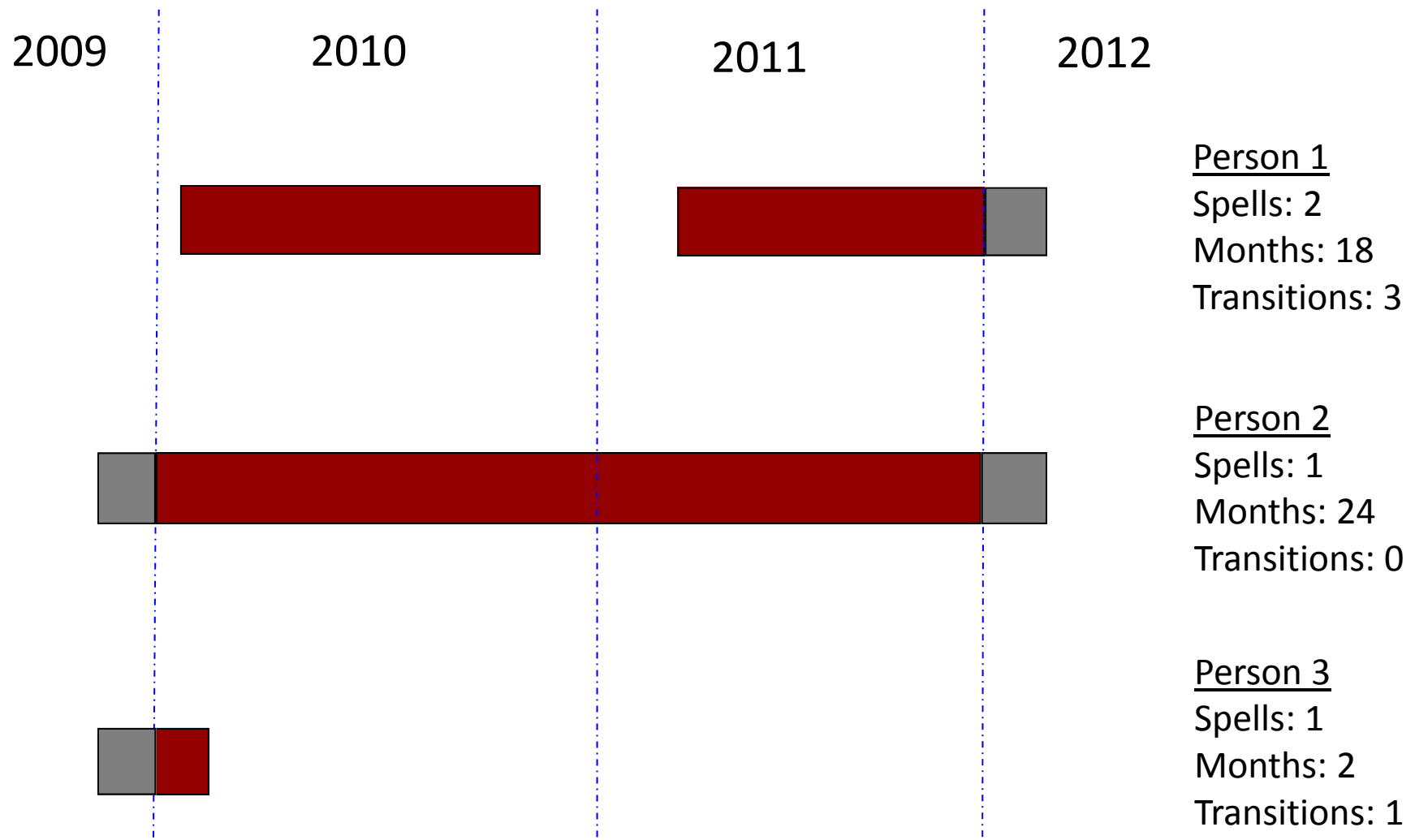
Monthly rates for **SIPP** and **SIPP-EHC** in CY2010 and CY2011



Median monthly amounts for **SIPP** and **SIPP-EHC** in CY2011



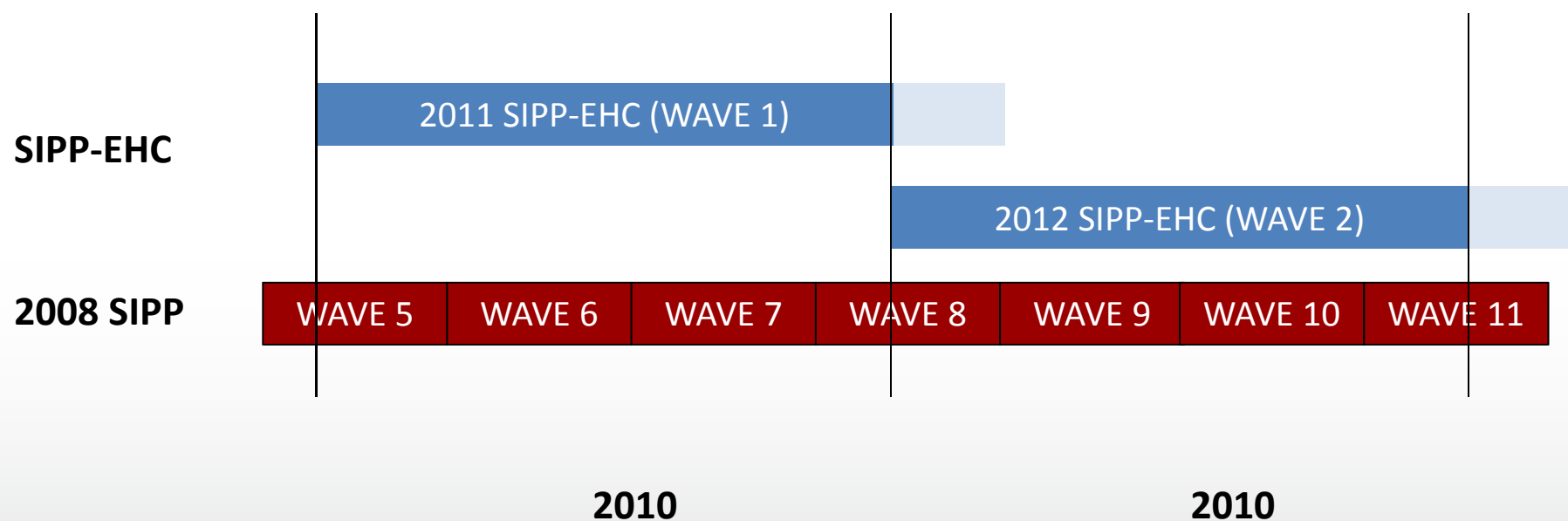
Months, Spells, and Transitions



Rate of agreement between SIPP-EHC and administrative data at least as high as for SIPP

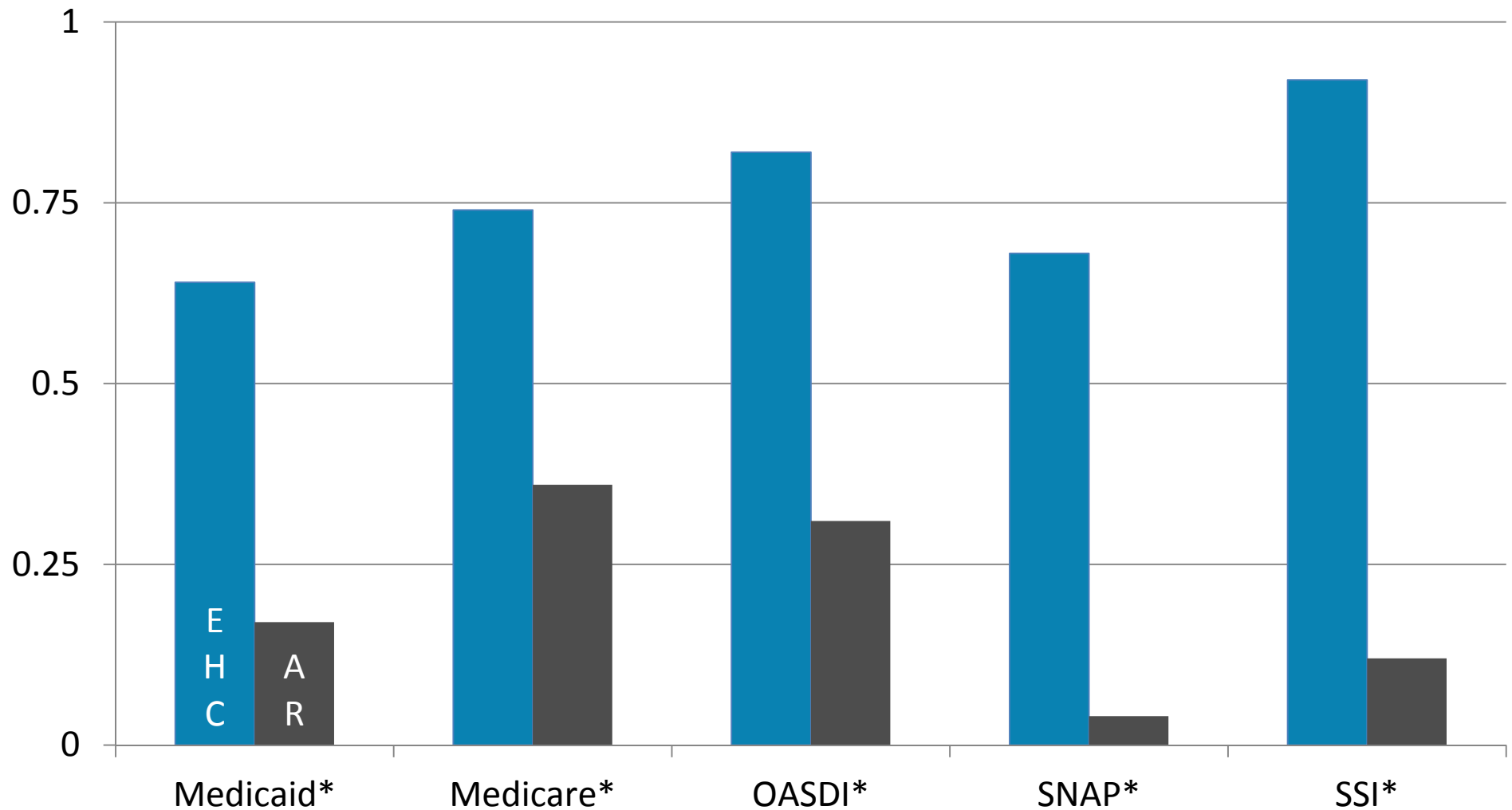
	Months	Spells	Transitions in CY2011
OASDI	+	+	+
SNAP	+	+	+
SSI	+	+	+
TANF	+	+	+
Medicare	+	+	+
Medicaid	+	+	+

Seams in SIPP and SIPP-EHC



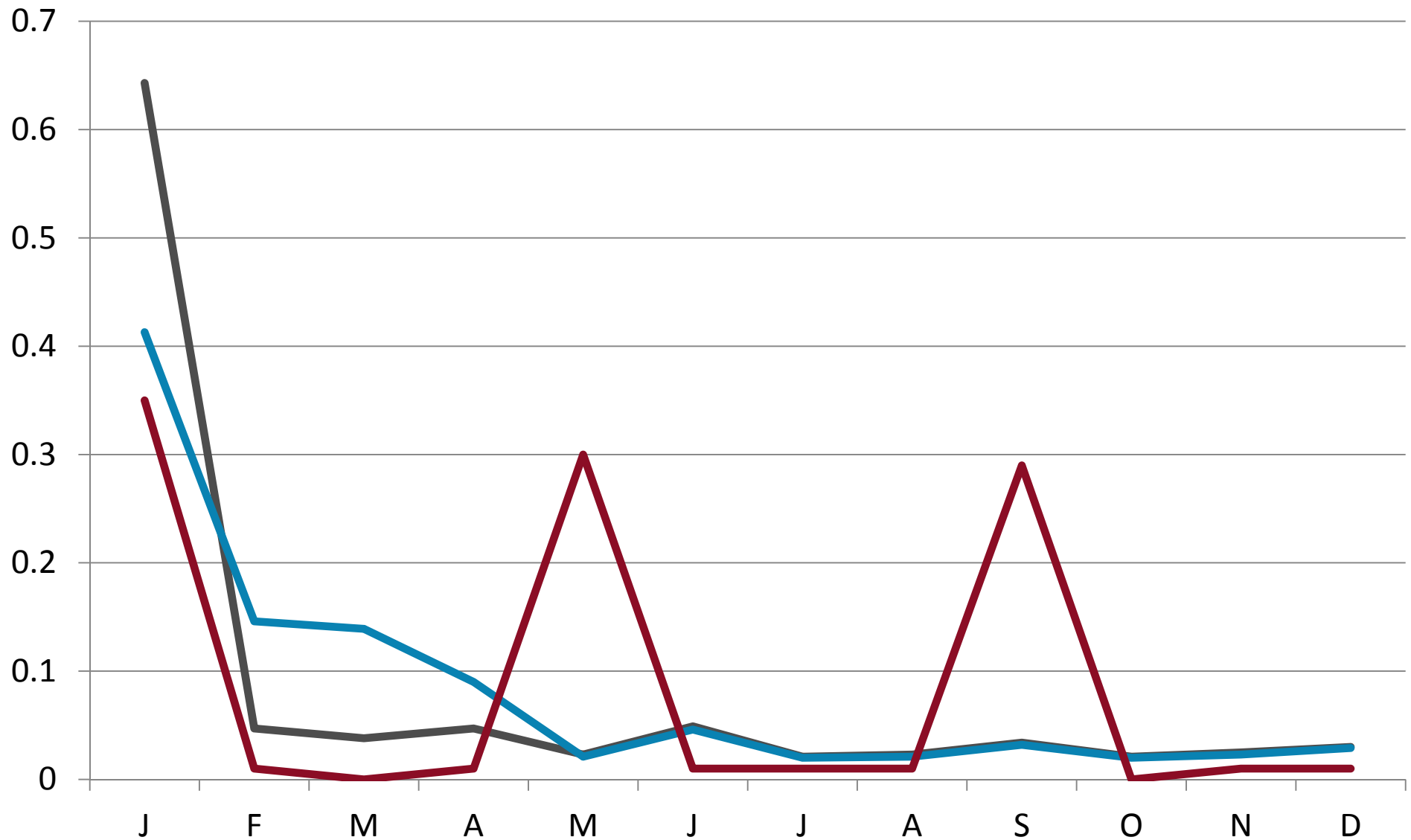
On-seam transitions for CY2011

SIPP-EHC and Administrative Records



Medicaid transitions for CY2011

SIPP-EHC, adjusted SIPP-EHC, and SIPP



Conclusions for Evaluation of 2011/2012 SIPP-EHC

- SIPP-EHC and SIPP produce estimates that with few exceptions are not substantially different.
- SIPP-EHC agrees with admin data at least as well as SIPP in nearly every case.
- As in SIPP, transitions fall disproportionately on seams.

Evaluations

Outline for remarks:

1. Overview of field tests and evaluations
2. Mapped SIPP (MSIPP)
3. Evaluation of 2011 and 2012 SIPP-EHC
- 4. In-progress evaluation work**
5. Evaluating 2014 SIPP

In-progress Evaluation Work

1. Imputation of missing data in 2011 MSIPP
2. Evaluation of impact of seam bias in SIPP and SIPP-EHC for studies of dynamics
3. Evaluation of dependent data design for addressing seam bias
4. Evaluation of incentive program (assignment of discretionary incentives based on responsive design model)
5. Evaluation of interviewer performance, interviewer comments
6. Instrument evaluation using para-data : flow, difficult sections, contact patterns
7. Evaluation of recorded interviews

Additional development work

1. “Research Briefs” on key content
2. Topic-specific P70 reports by subject area
3. Improvements to interviewer training

Imputation of missing data in 2011 MSIPP

- Person-month level
- Focused on topics for which we have administrative data
- Longitudinal consistency
- Collaboration with Duke NSF-Census Research Node
- Anticipated completion: June 2014
- Facilitates investigation of impact of seam bias in SIPP-EHC and SIPP

Evaluations

Outline of remarks:

1. SIPP-EHC Paper Test
2. Mapped SIPP (MSIPP)
3. Evaluation of 2011 and 2012 SIPP-EHC
4. In-progress and future evaluations
- 5. Evaluating 2014 SIPP**

Evaluating 2014 SIPP

- Creating 2014 MSIPP
 - Comprehensive?
 - Edited data!
 - Survey weights can account for attrition from 2008 SIPP
 - Public-use and restricted-use versions?
 - Incomplete calendar year coverage for 2008 SIPP
 - Link to administrative data

Evaluating 2014 SIPP: Administrative data availability

CY2013 Data	Anticipated availability
OASDI	September 2014
SSI	September 2014
Earnings and Employment	September 2015
SNAP/TANF (NY)	October 2014
Medicare	September 2014
Medicaid	TBD

Evaluating 2014 SIPP

1. Comparison of estimates from 2014 SIPP to benchmarks:
 - Published aggregates from programs
 - Estimates from 2008 SIPP
 - Including dynamics (timing of transitions)
 - Estimates from other surveys
2. Rates of agreement with administrative at the micro-level
 - Program participation and benefits amounts
 - Dynamics of program participation
 - Employment, number of employers, annual earnings
3. Respondent Burden
4. Survey content