

# National Research Council Workshop on Successful Out-of-School STEM Learning

June 3-4, 2014



**Michael Funk**  
*Director, After School Division  
California Department of Education*

# California Publicly Funded After School Programs Funding History



## Federal Funding:

21st Century Community Learning Centers (21st CCLC) Program

### 1994: 21st CCLC Launched

The 21st CCLC was launched. The first grants were awarded in 1995.

### 2002: Block Grants to States

No Child Left Behind Act reauthorized 21st CCLC, transferring administration of the grants to state control.

### Current Funding Allocation

\$122,135,443

1990

1995

2000

2005

2010

2015

Beyond

## CA State Funding:

After School Education and Safety (ASES) Program

### 1997: SB 1756 Passed

First allocation of state funding for school based After School Programs.

\$50 Million

\$121.6 Million

### 2002: Prop 49 Passed

### 2006: Prop 49 Triggered

Prop 49 was triggered when CA reached \$1.5 Billion more in state spending than the highest spending year between 2000-2004.

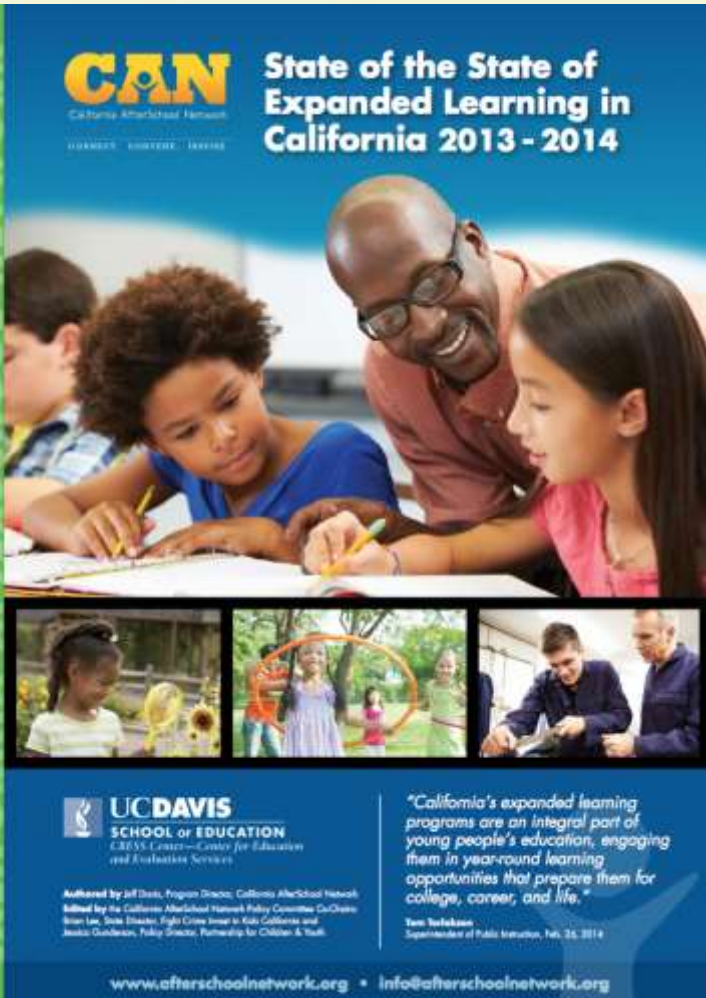
\$550 Million

### Current Funding Allocation

\$550 Million

# Expanded learning in CA

- Over 4,400 programs serving over 430,000 youth (still a large unmet need).
- Serving CA's high need schools.
- Heavily leveraged to promote year round learning, health, and STEM.





# Quality in Expanded Learning



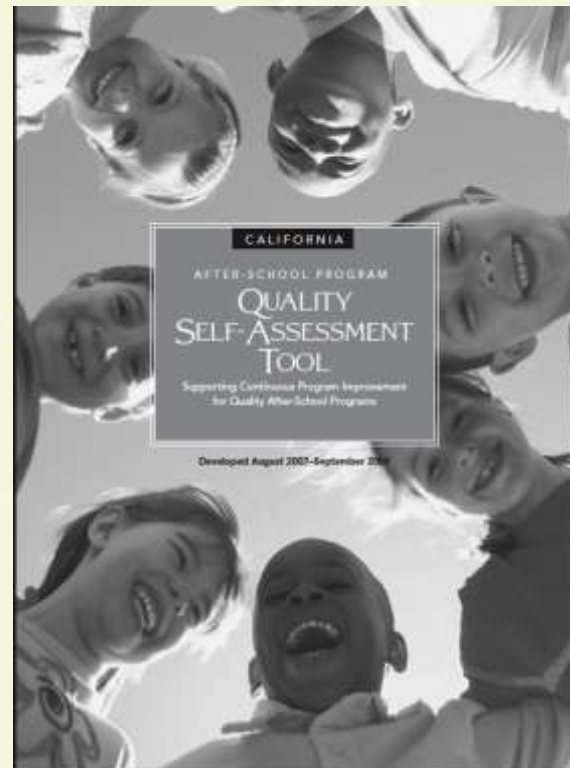
## Five Core Learning Principles:

- Active
- Collaborative
- Meaningful
- Supports Mastery
- Expands Horizons

[www.learninginafterschool.org](http://www.learninginafterschool.org)

## QUALITY STANDARDS for EXPANDED LEARNING

PHASE ONE





# The Power of Discovery: STEM<sup>2</sup>

*The Power of Discovery: STEM<sup>2</sup> is a partnership between CAN and CSLNet made possible with the generous support of the S.D. Bechtel, Jr. Foundation, the Noyce Foundation, the Packard Foundation, and the Samueli Foundation*



California STEM  
Learning Network

# Power of Discovery Regions

**California CCESA Regions**

**Region 1**  
**Alameda County Office of Education and The Gateways East Bay STEM Learning Network**  
 • Alameda • Contra Costa • Marin • Napa • San Francisco • Solano • San Mateo

**Region 2**  
**Sacramento County Office of Education**  
 • Alpine • Colusa • El Dorado • Nevada • Placer • Sacramento • Sierra • Sutter • Yolo • Yuba

**Region 3**  
**The Tech Museum of Innovation in partnership with The Region 5 After School Partnerships**  
 • Monterey • San Benito • Santa Clara • Santa Cruz

**Region 4**

**Region 5**

**Region 6**

**Region 7**

**Region 8**

**Region 9**  
**Region 9 Technical Assistance Center of San Diego County Office of Education in Partnership with the Imperial County Office of Education**  
 • Imperial • Orange • San Diego

**Region 10**

**Region 11**

**OC STEM INITIATIVE**  
**Orange County STEM Initiative**  
 • Imperial • Orange • San Diego

**RTAC**  
**Regional Technical Assistance Center**  
 • Imperial • Orange • San Diego

**IMPERIAL COUNTY OFFICE OF EDUCATION**

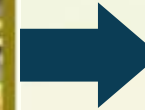
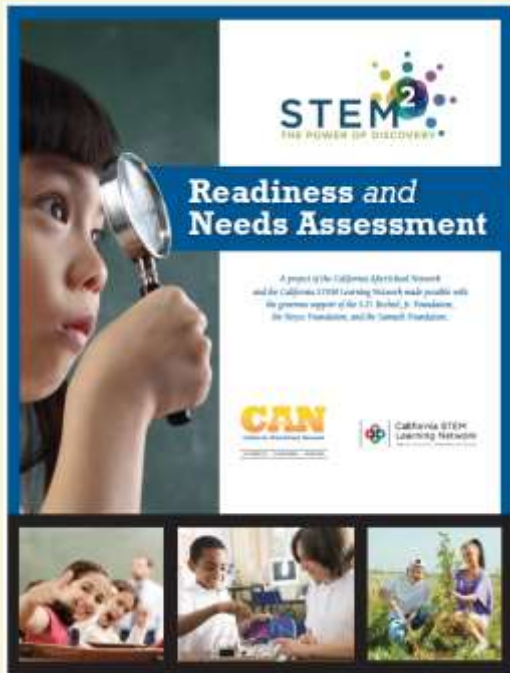
**STEM² THE POWER OF DISCOVERY**

**The Power of Discovery: STEM² Initiative** is facilitated by the California AfterSchool Network in partnership with the California STEM Learning Network to increase high-quality STEM learning opportunities to youth in expanded learning programs in nearly 20 California counties.

**Five Regional Innovation Support Providers** have been established to provide support to over 1,400 programs, over 1/3 of California's publicly funded after school programs.

- **Brokering resources and professional development**
  - Provide targeted technical assistance to expanded learning programs. Including appropriate materials and professional development in support of comprehensive STEM program plans.
- **Building regional capacity through partnerships**
  - Identify and strategically facilitate on-going opportunities for key stakeholders/partners to enhance expanded STEM learning opportunities consistent with their organizational goals, and the goals of the Power of Discovery: STEM².

## Program Level Assessment and planning



## Site level planning







HOME   STEM<sup>2</sup>   RESOURCES   PROFESSIONAL DEVELOPMENT   GET CONNECTED

Looking for Research to   Support OST STEM?   Browse Reports by TASC, Harvard, & More ... GO! >

## Assessment & Planning

An important part to successfully implementing quality STEM learning opportunities is creating a comprehensive plan and continually assessing the plan for improvement. This section features several different planning and assessment tools

## Curriculum & Activities

In this section you will find activities, STEM curricula and links to databases to search vetted curricula. Implementing STEM activities in your OST programs is a great place to start, but ideally programs should be moving towards creating a comprehensive plan

## Funding

This section provides a variety of STEM funding opportunities that are currently available for OST programs as well as links to funding websites to keep up with the various other funding opportunities that are available.

## STEM Committee

The STEM Committee of the California AfterSchool Network is a dedicated group of professionals sharing information, resources, promising practices, as well as a shared work plan intended to advance STEM in out-of-school time in California.





# Power of Discovery Impacts

- 5 Regions have engaged over 600 sites currently participating.
- As of May 2013 over 130 new partners engaged and over 200 hours of technical assistance provided.
- Program directors surveyed cite improvements in overall program quality, increased student and staff engagement, and increased alignment with the core instructional day as successes of the project.
- Comprehensive evaluation data currently being analyzed.