



International Conference on Census Methods
July 31 – August 1, 2014

Statistical data assignment - from area to address point

Janusz Dygaszewicz
Director

Central Statistical Office of Poland

Programming and Coordination of Statistical Survey Department

Washington, 31.07-1.08.2014

Usage of spatial data in CSO Poland

the preparatory works

- creation of spatial address databases

during census

- field works supporting

Geostatistics Portal:

- dissemination of georeferenced census data
- dissemination of georeferenced statistical data other than census results
- multidimensional spatial analysis

The preparatory works

3

Spatial data collected and maintained within official statistics



Statistical address points database

- address points for residential buildings



Statistical distribution boundaries

- statistical regions
- census enumeration areas

4

Spatial address database creation

x,y GEOCODING

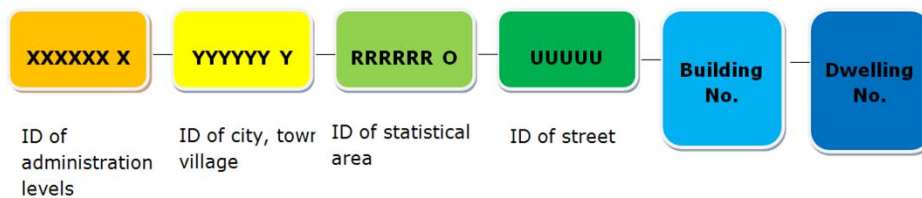
- Territorial Identification Registry (System TERYT) provides location data of all statistical units as the address-point of a related building
- Location of buildings using geographical x,y coordinates, gives the exact location of each building and makes it possible to link microdata from several registers.

x,y GEOCODING

- ▶ This eliminates the necessity to recalculate data when administrative boundaries are changing. Furthermore, the point assignment will allow easy aggregation and processing of statistical data in any chosen area - even for the GRID – based dissemination,
- ▶ x,y geocoding is crucial in all three stages of the census:
 - the preparatory works,
 - management of enumerators during the fields works,
 - and for multidimensional spatial analysis.

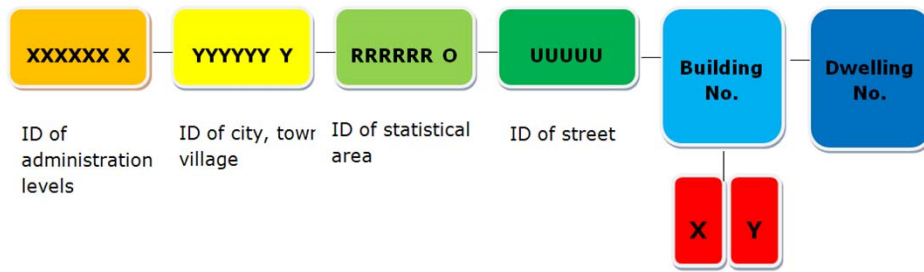
7

Address point identification system



8

Spatial address point Identification system



9

Statistical address points

address locations for buildings with dwellings

needed for censuses in Poland

- to navigate enumerators
- to visualise census results on maps

10

Reference materials

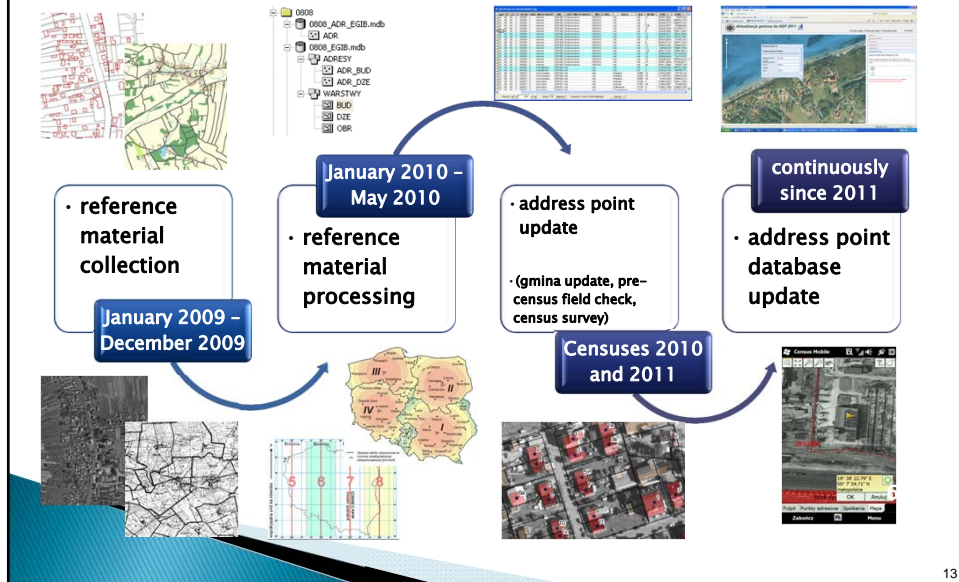
Resources acquired mainly from the mapping agency
and used for digital maps preparation

Data exchange with NMA

Orthophotomap *	
Cadastral data*	
PRG (National Register of Borders) *	
LPIS (Land Parcel Identification System) *	
Roads and streets network	
PRNG (National Register of Geographical Names) *	
BDOT (Database of Topographic Objects) *	
Records of towns, streets and addresses *	

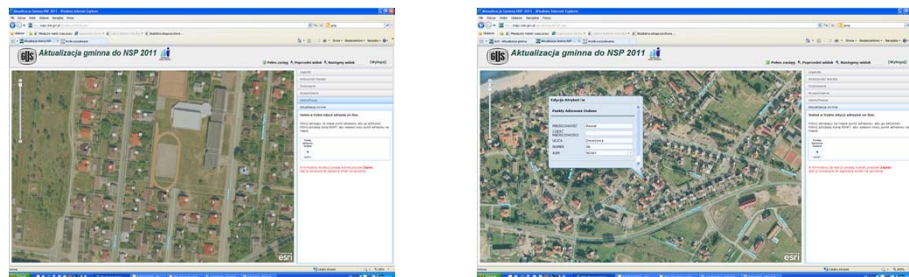
* - Obtained free of charge under the Public Statistics
Research Program

Work schedule



13

Statistical address point database update in cooperation with municipalities



- 3 weeks
- internet map service provided by CSO
- on-line application for spatial address point database editing**
- printouts still available in case of bad internet connection

14

The objectives of visual precensus survey by enumerators

- Getting familiar with the terrain
- **Confirmation** of the existing address points
- **Verification** of basic information about a given address points
- **Adding new** address points identified in the field
- **Removal** of addresses that do not exist or buildings that are not in the area



15

Result

6 months time
(Jan – Jun 2010)

210 GIS operators in
Polish official
statistics

6 million statistical
address points

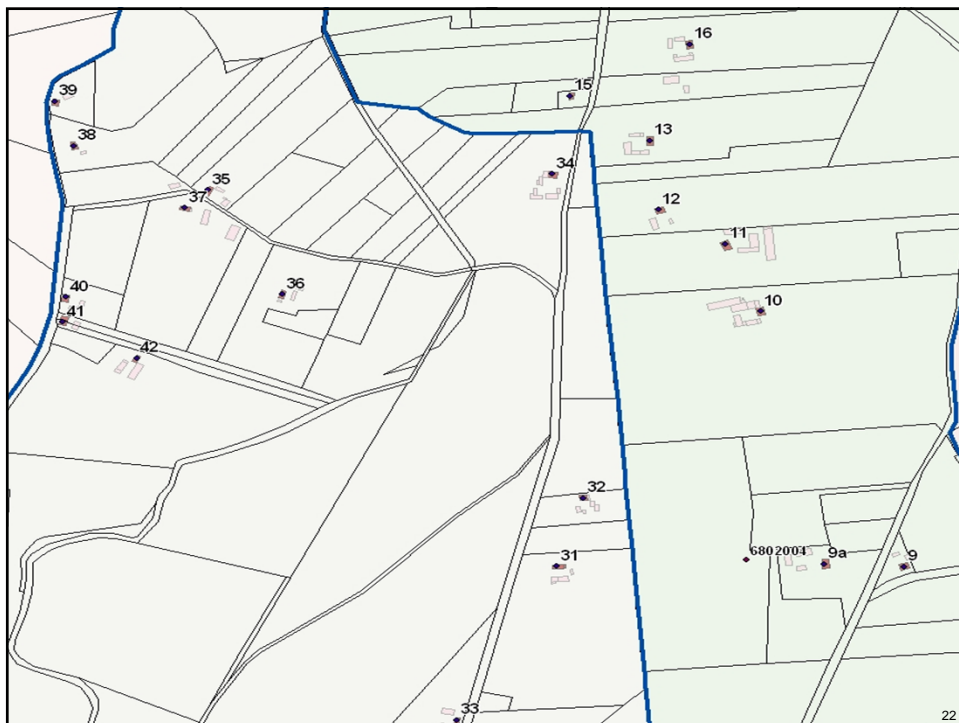


16

BEFORE









Census data dissemination





GEO.STAT.GOV.PL

STARTED: JULY 2013

Census results: *Choropleth maps, Diagram maps*

Local Data Bank

Other statistical databases

25

Geostatistics Portal

The main objectives of the Portal

- The spatial presentation of collected data, in particular:
 - **Agricultural Census 2010**
 - **Population and Housing Census 2011**
 - **Local Data Bank** – a huge database with statistical data for years 2009-2012
- The spatial presentation of the geostatistical analysis results
- Completing tasks associated with **INSPIRE** Directive guidelines implementation

26

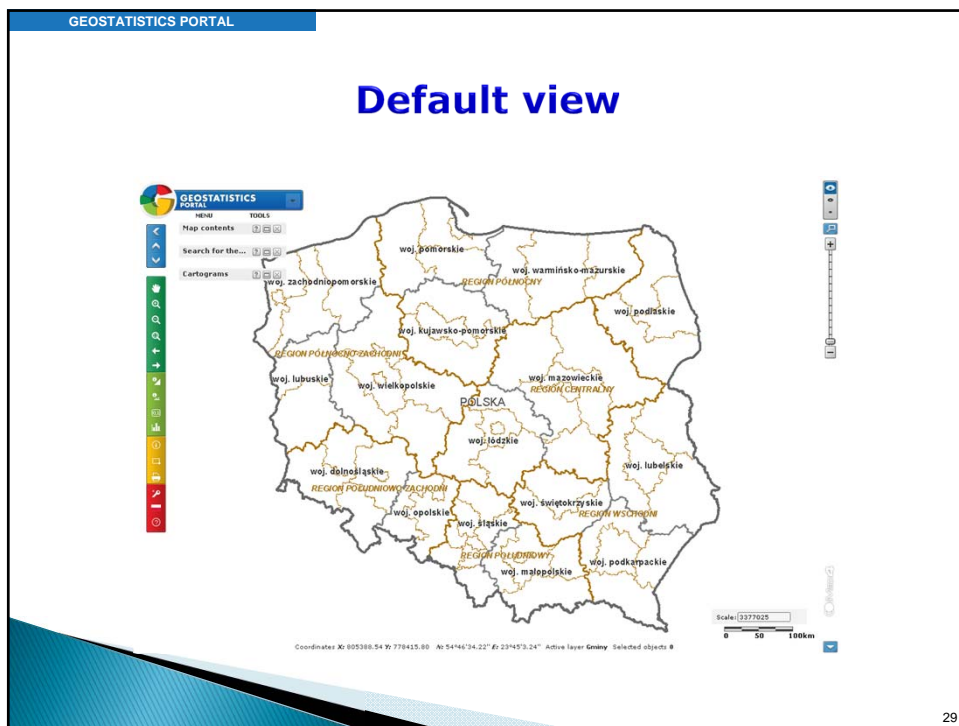
Geostatistics Portal

The portal allows statistical data presentation in form of any spatial unit:

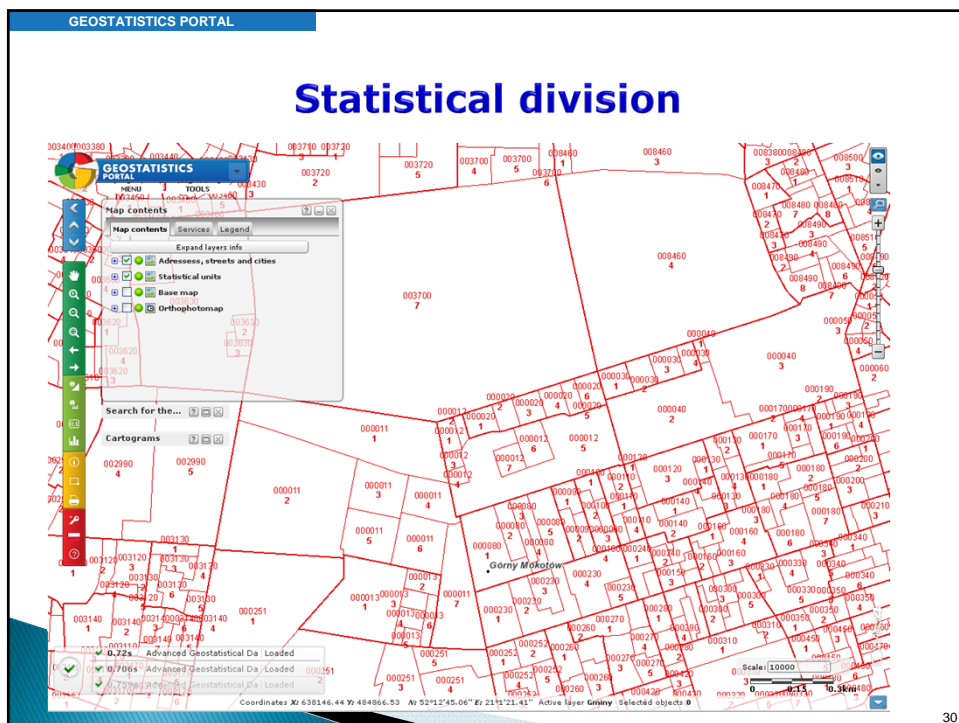
- 5' grid
- 1 km² grid
- administrative division
- urban division
- statistical division
- any other polygon

27

Geostatistics Portal functionalities

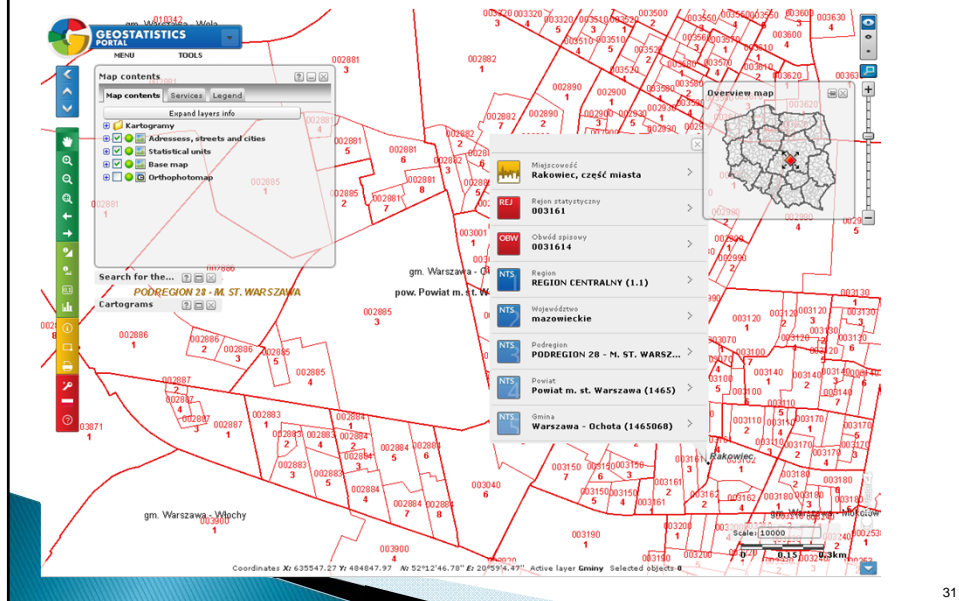


29

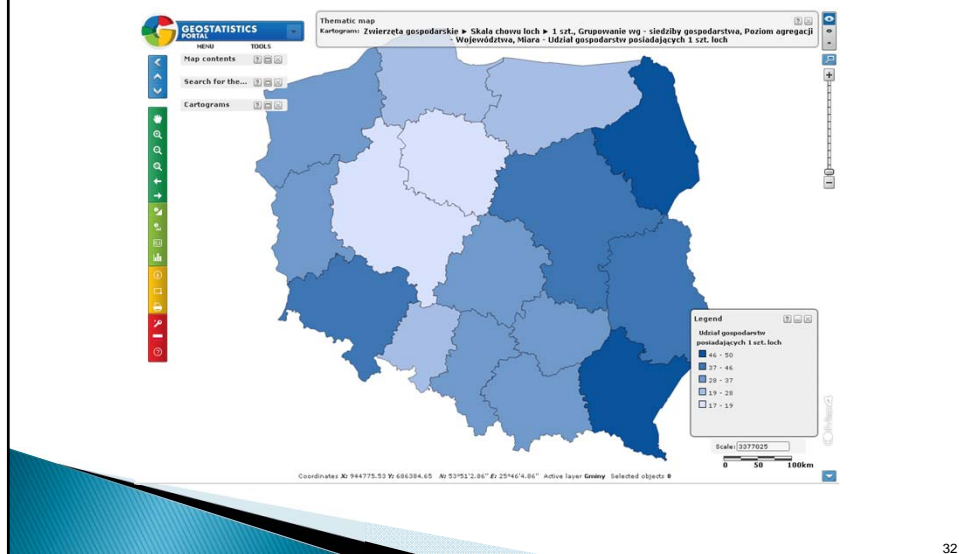


30

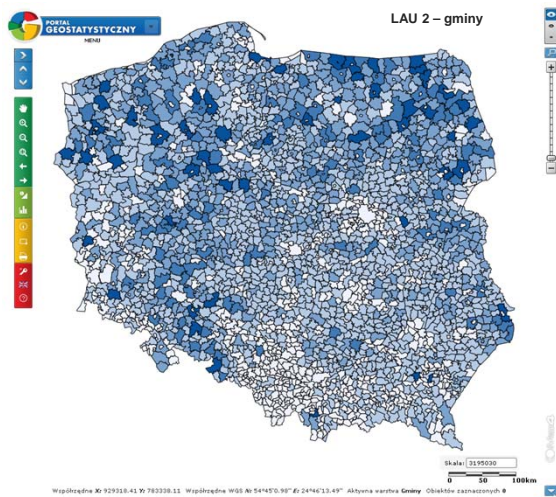
Object identification



Choropleth map

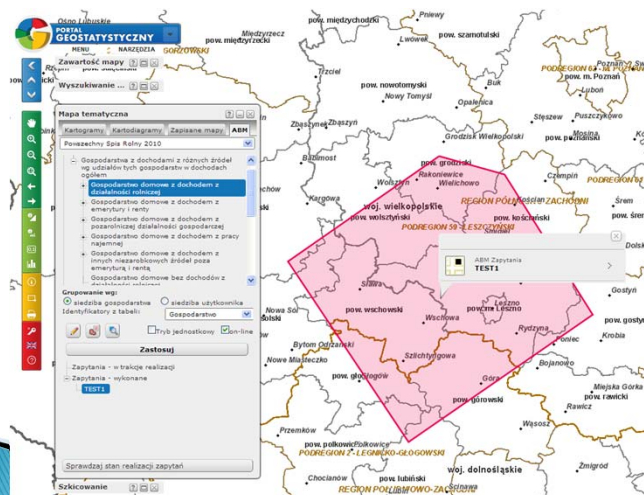


One phenomenon – various presentation levels

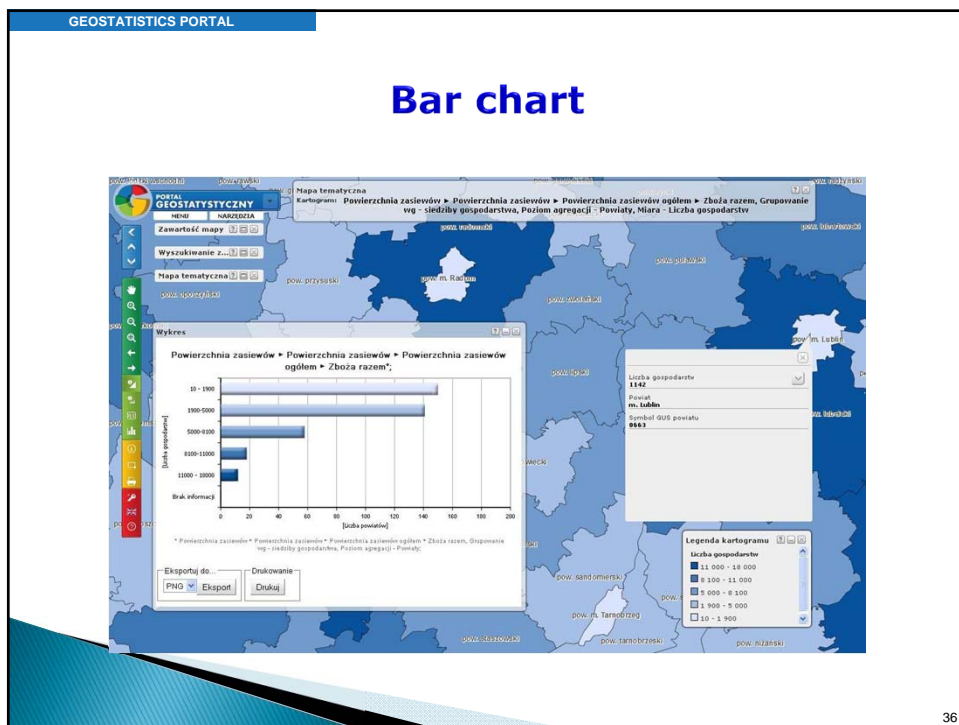
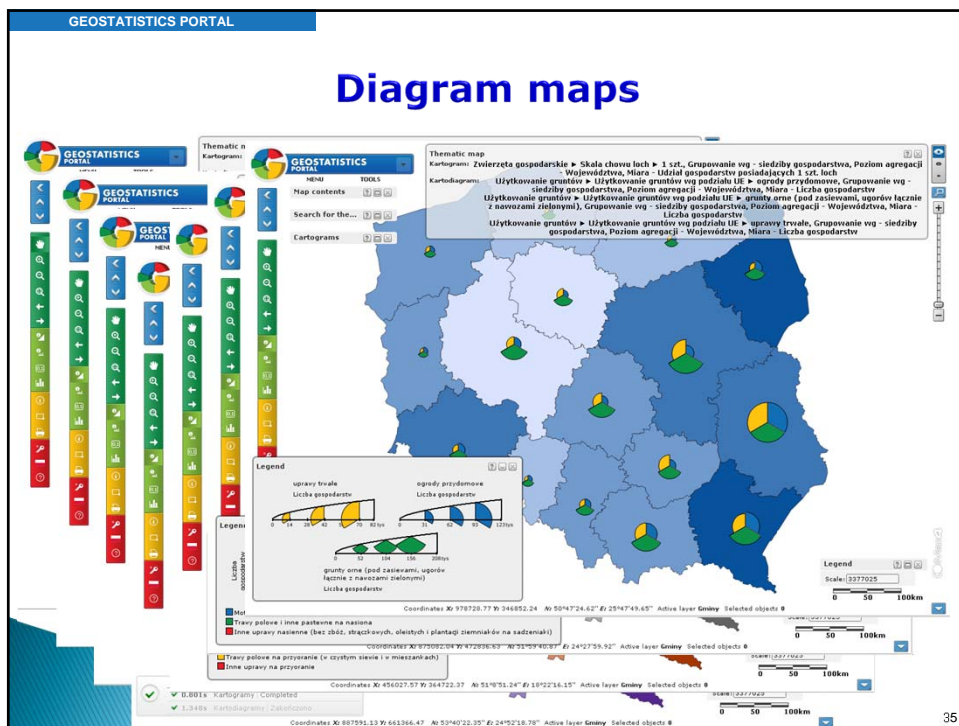


33

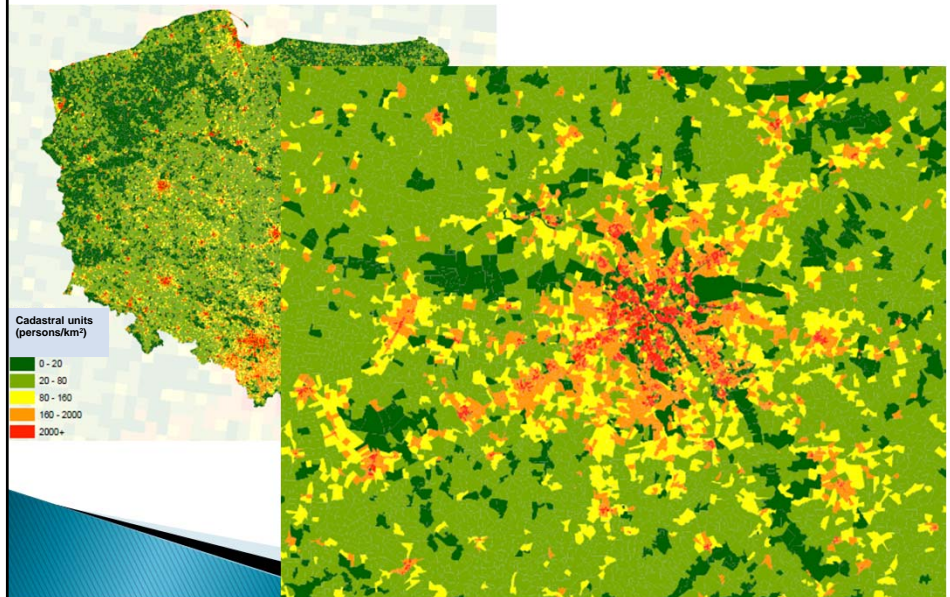
Individual data - dynamic inquiries the possibility of obtaining data from the indicated area



34



DEMOGRAPHIC DATA IN CADASTRAL UNITS

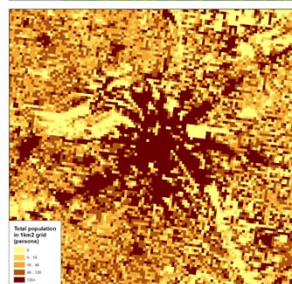
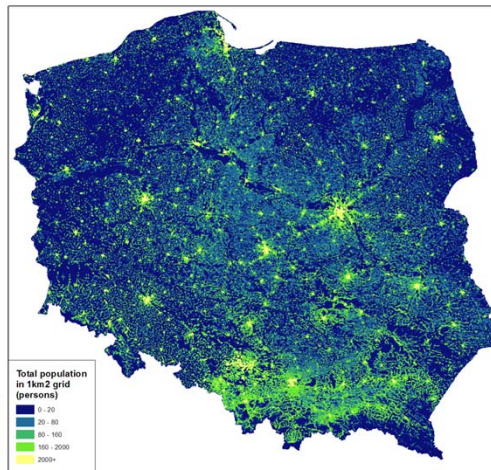


GEOSTATISTICS PORTAL

Publishing statistical data on grids

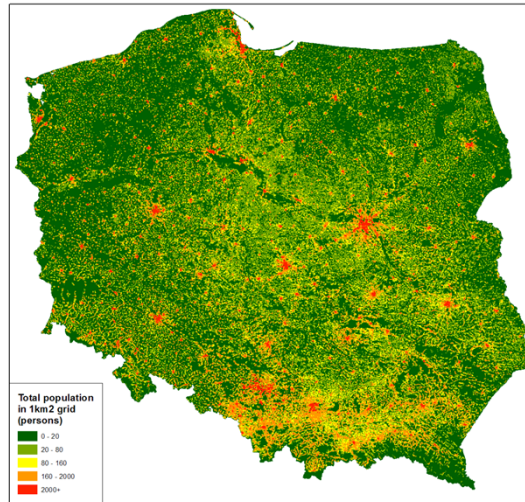
GEOSTAT project

Merging statistical data and geospatial information

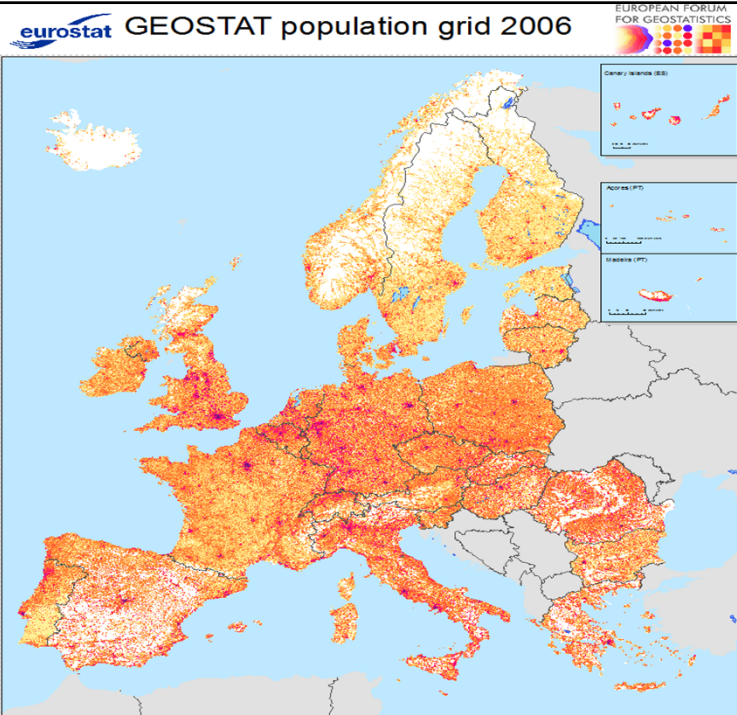


38

Total population in 1km² grid



39



40

Geostatistics Portal – benefits

- ▶ easy access to a huge amount of data on agriculture and demography (**statistical data merged with geospatial data**)
- ▶ a variety of cartography presentation methods
- ▶ spatial analysis tools
- ▶ INSPIRE compliant network services
- ▶ in the future:
 - geovisualization platform for data from other statistical sources

41

New phenomena presented spatially

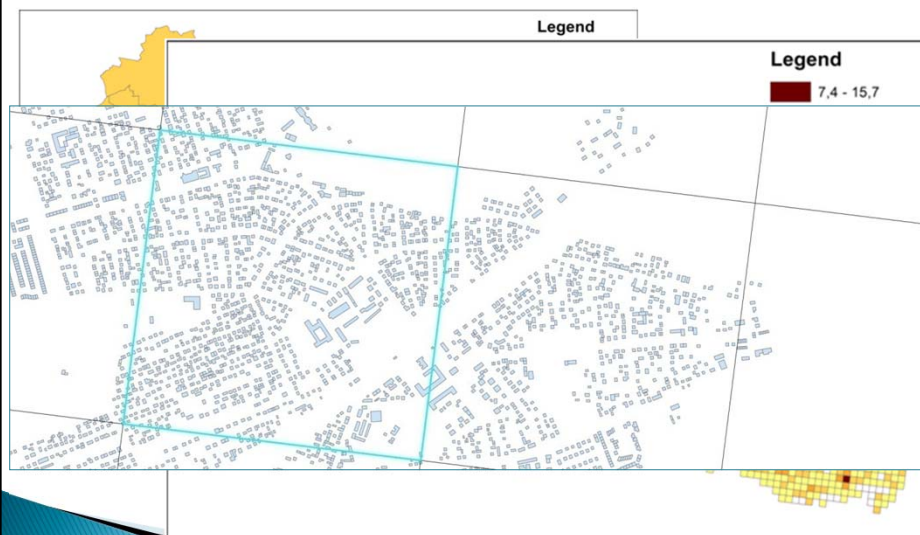
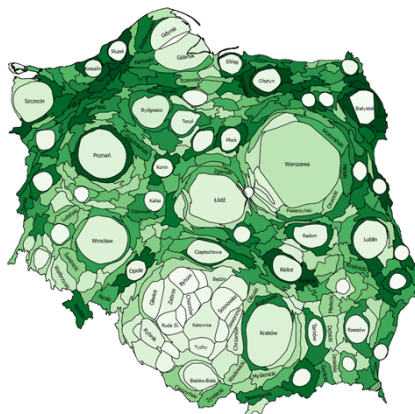


Figure 6 Value of the development rate in a 1x1 km grid [%]

New methods of cartographic presentation

cartograms



43

Summing up

- **Merging** statistics and geospatial information,
- Ability to use **selected map layers** according to current needs,
- Census **results visualization** on maps in a GIS application - the Geostatistics Portal,
- **Multidimensional** geospatial **analysis** on census results,
- **Continuous update** and maintenance of the statistical address point database,

44

**Thank you for your
attention**

Janusz Dygaszewicz
Director

*Central Statistical Office of Poland
Programming and Coordination of Statistical
Surveys Department*