

**“Geographic Databases” from population
censuses to fundamental framework data for
statistics to National Development
Planning, Monitoring and Evaluating,
South Africa**

Sharthi Laldaparsad

**Statistics South Africa
Executive Manager: Policy Research & Analysis**

1 August 2014, Washington DC, USA

THE SOUTH AFRICA I KNOW, THE HOME I UNDERSTAND



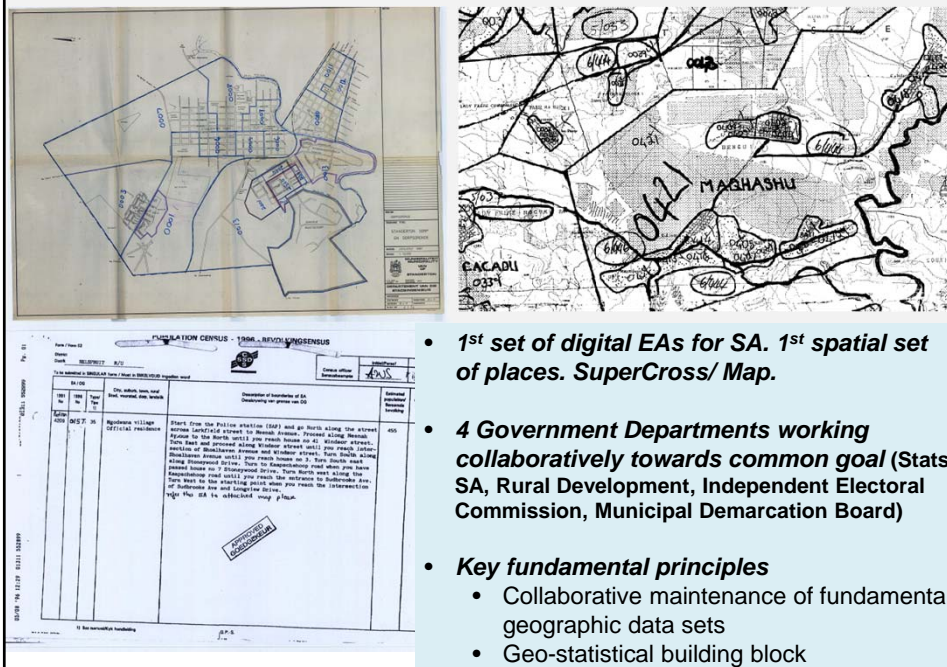
Contents . . .

- **Our experience. Census 1996, 2001, 2011.**
- **SA Spatial Data Infrastructure (SASDI)**
- **SA Developmental Agenda**
- **Spatial Analysis focus**
- **Concluding remarks**

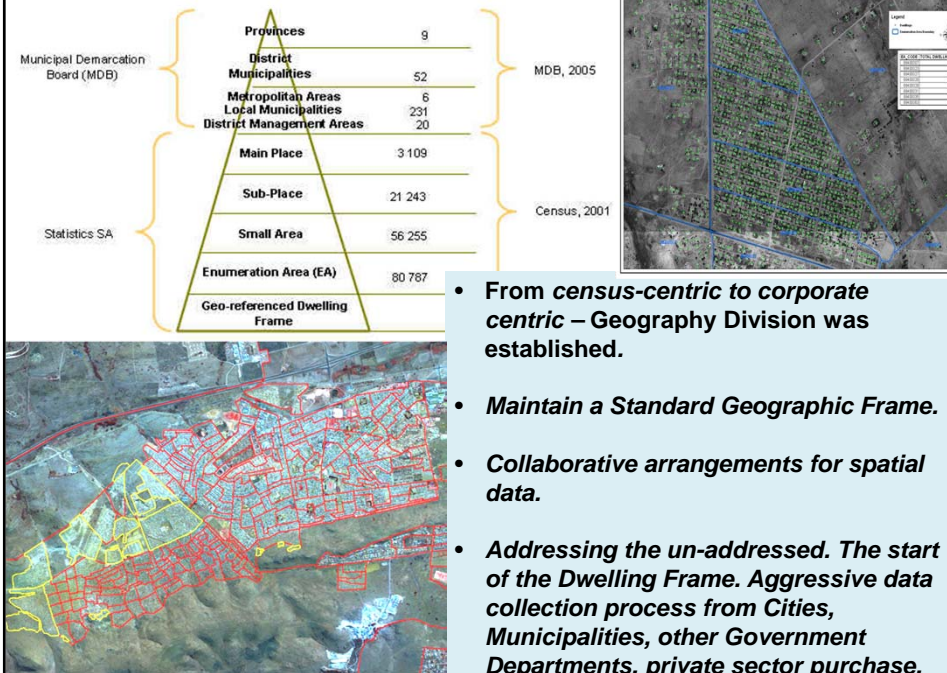
THE SOUTH AFRICA I KNOW, THE HOME I UNDERSTAND



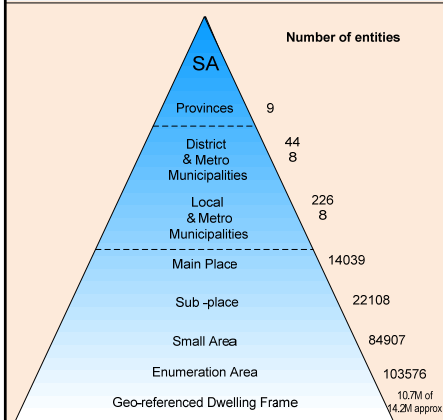
1996 Census laid the foundation for many things...



2001 Census ...



2011 Census ...



- Dwelling points together with aerial & satellite photography basis for demarcation. Dwelling Frame updated from census listings.
- *Maintain a Standard Geographic Frame.*
- *Collaborative arrangements for spatial data.*
- *Resurrection of the Committee of Spatial Information (CSI) & SASDI.*
- *First draft of SA's National Development Plan was released.*
- *Team of 12 goes back to school "the CRUISE program" was established.*



Collaborative arrangements

National Government Departments	Data sets
CDNGI (Rural Development)	Imagery (2008-2011), topo sheets/ vectors, place names
Dept of Human Settlement	Informal Settlements, RDP housing
Dept of Education	School points
Dept of Health	Hospitals, clinics
Dept of Rural Development: Surveyor General	National Cadastre
Dept of Rural Development: Spatial planning	Tribal Boundaries
Dept of Water Affairs	Villages (rural comm and reservoirs
Dept Of Local Government and Traditional affairs - KZN(Current Cogta)	Tribal Boundaries, w
MDB	Municipal Boundaries and Provincial boun
IEC	Wards and Voting st data where voting tr
South African Police	Police Stations, poli attributes (National Excel format
SanParks	Private nature reser national parks, prov
Different Metros	Imagery and vector zones, cadastre)

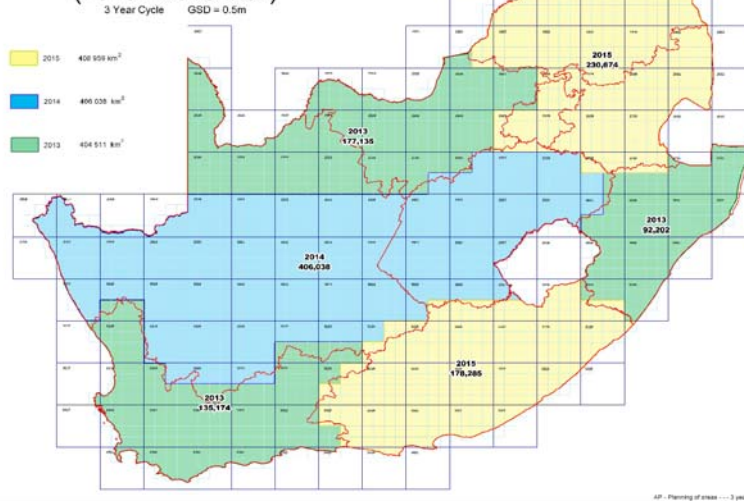
Private & Parastatal

- Update & maintenance of geographic data sets done at the source/ data owner – based on their budget & time frames.
- Metropolitan and larger municipalities have developed GIS systems. Data requests are made.
- Limited capacity for data at most municipalities.
- Systems approach of data flow from local to national still requires development.

AFRIGIS	Street Centrelines, Points of Interest, Suburb Boundaries, Town Boundaries, Postal Codes, Postal Code Regions, Sectional Schemes, Proclaimed Town Boundaries, Built Up Coverage, Gated Communities	2010 & 2011	R. 500 000 for a three year maintenance cost.
Eskom	Spot (Spatial)Building Count points and polygon data	2009/ 2010	Data exchange collaboration in place
Geospace and other imagery service providers	Imagery		Gov data exchange

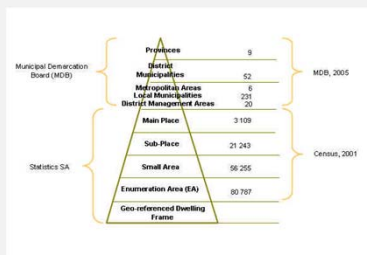
Collaborative arrangements for spatial data continues ...

CD:NGI Proposed Digital Imagery (2013 - 2015 incl.)



- Photography good source of information, especially where there is no data

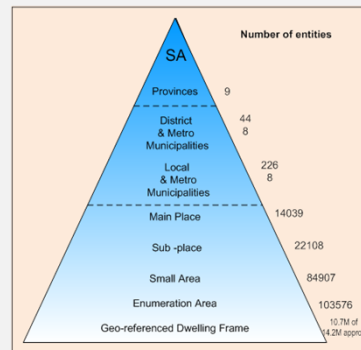
Our experience. What has stood the test of time? ...



Standard Geographic Frame (consistent & stable over time)

Geo-statistical Building Block against which information can be collected & rolled up for dissemination

Updated & reliable fundamental sampling frames: Dwelling/ Address Frames; the Business Frame



Built a dependency on other data suppliers/ producers. We want quality data from them. Dependency on a functioning SASDI. Therefore statistics supports the SASDI development.

Resurrection of the Committee for Spatial Information; Establishment of SASDI ...

- SDI Act was promulgated in 2003.
- *Main focus to establish South African Spatial Data Infrastructure (SASDI). Promoting Availability, Accessibility, Usability, Relevance, Reliability – for spatial information.*
- *1st meeting of Committee for Spatial Information (CSI) June 2010.*
- *CSI Sub-Committees established. Work of sub-committees began April 2011. Stats SA was assigned responsibility for the Data Sub-committee.*
- *Achievements: Defining core spatial data sets & the list of data custodians; define & develop the metadata catalogue; SASDI Website up and running although not a fully-fledged geo-portal as yet; policies, guidelines & procedures drafted.*
- *Busy with South African Geo-Information Management Strategy:*
 - *Embedding spatial data within the country's Developmental Agenda. Giving it relevance. Promoting its usability.*
 - *Strategically locating the function of spatial data coordination; leadership*

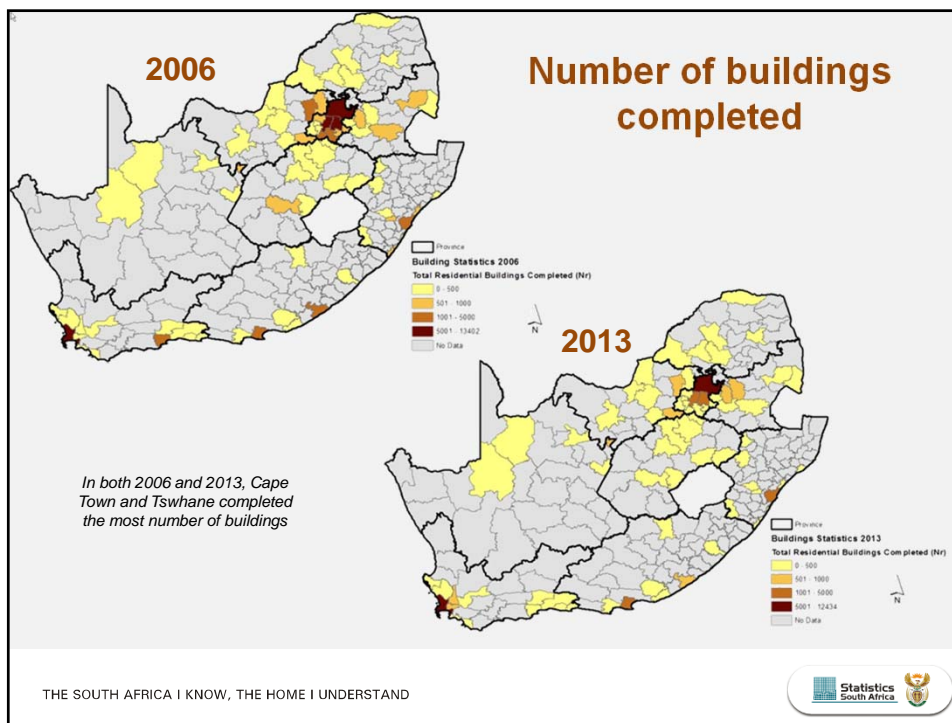
South Africa's National Development Plan (NDP) - Vision 2030



CRUISE Programme ...

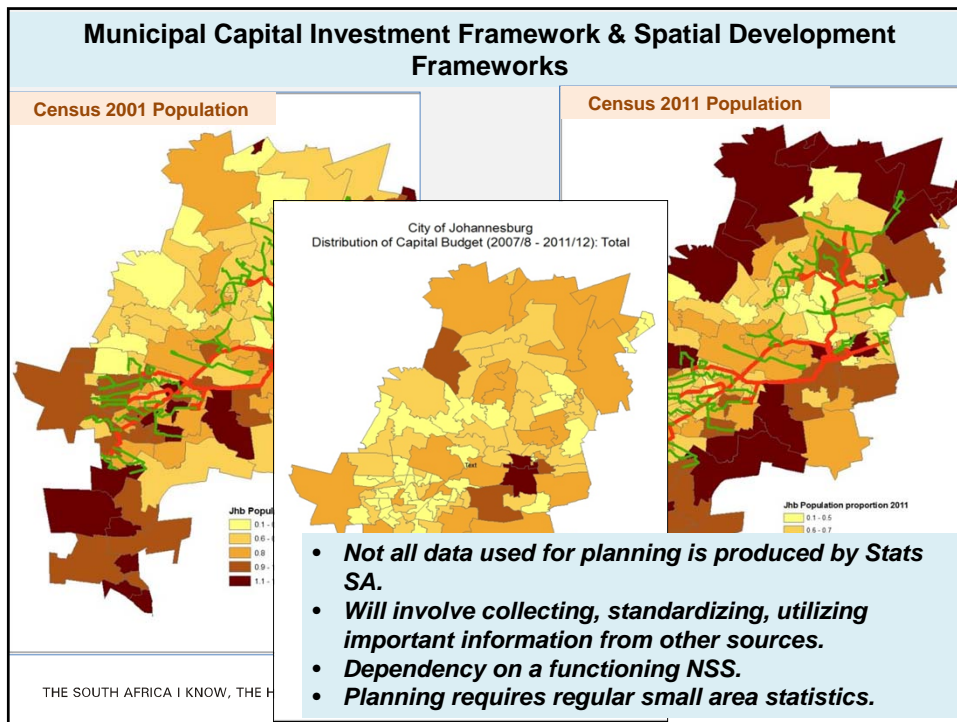
- **Usability of data.** *The STORY about our country. Builds on our motto - The South Africa I know. The HOME I understand.*
- **Builds geo-spatial statistical thinking.** *Expands the depth & breadth of our information needs.*
- **1 year intensive Masters Programme.** *Produces journal articles, dealing with critical aspects of our developmental agenda using spatial and statistical data like transforming spatial distortions in settlement planning; the impact of corridor development; municipal service delivery, etc.*

THE SOUTH AFRICA I KNOW, THE HOME I UNDERSTAND

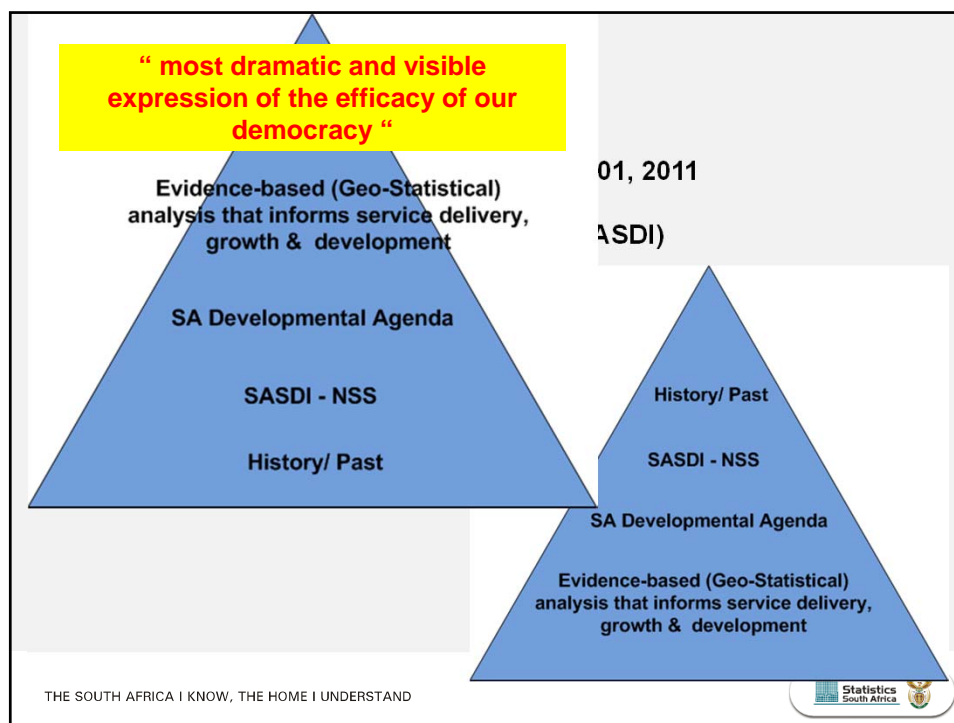


THE SOUTH AFRICA I KNOW, THE HOME I UNDERSTAND





- ### Concluding remarks ...
- SASDI is not at a mature stage. Still difficulties with cooperation, data integration & harmonization, funding and leadership.
 - Relevance with respect to SA Developmental Agenda for both the GEO & the STATISTICS needs re-strategising to collect, structure & present for Government's priorities.
 - Censuses, surveys or statistical data in general, requires geography, the smaller (detail) the geography the better for planning. Statistics will benefit from a functioning SASDI & SASDI from statistics.
 - Geo-statistical integration important. Stakeholders that collect statistics (like local municipalities, education, health, policing, and other sector Departments) must maintain the links with the smallest (lowest) geography – can be rolled up to place, ward, municipality, province or any other geography.
 - Geo-statistical building block against which we all can collect data.
 - Successful implementation of the National Statistical System (NSS)(part of the Statistics Act) & SASDI is important for South Africa's growth and development.



Thank U

sharthil@statssa.gov.za

THE SOUTH AFRICA I KNOW, THE HOME I UNDERSTAND

Statistics South Africa