



# *Federal Perspective on Scaling Family-Focused Preventive Interventions*

Clarese Holden, Ph.D.  
SAMHSA's Center for Substance Abuse Prevention

**IOM-NRC Forum on Promoting Children's  
Cognitive, Affective, and Behavioral Health  
Washington, DC  
April 1, 2014**



# SAMHSA's Vision

America is a nation that understands and acts on the knowledge that ...



- Behavioral health is essential to health.
- Prevention works.
- Treatment is effective.
- People recover.

# SAMHSA's Strategic Initiatives

## ➔ AIM: Improving the Nation's Behavioral Health

- 1 Prevention
- 2 Trauma and Justice
- 3 Military Families
- 4 Recovery Support

## ➔ AIM: Transforming Health Care in America

- 5 Health Reform
- 6 Health Information Technology

## ➔ AIM: Achieving Excellence in Operations

- 7 Data, Outcomes, and Quality
- 8 Public Awareness and Support

# SAMHSA's Strategic Initiative #1: Prevention of Substance Abuse and Mental Illness

## Top Priorities

- Prevent substance abuse and **improve well-being** in states, territories, tribes
- Establish **prevention of underage drinking** as a priority issue for states, territories, tribal entities, colleges and universities, and communities.
- Increase public knowledge of the **warning signs for suicide** and actions to take in response.
- Reduce **prescription drug misuse** and abuse.



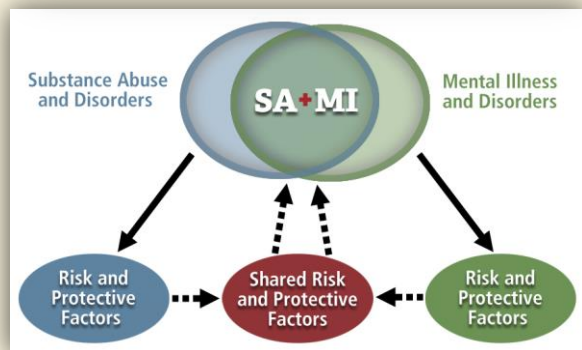


# Substance Abuse and Mental Illness Are Linked



Substance abuse and mental illness *share risk and protective factors.*

- Up to *half of people* with a serious mental illness will develop a substance use disorder at some time in their lives.
- Alcohol dependence is *four times more likely* to occur among adults with mental illness than among adults with no mental illness.
- Many health care systems to treat substance abuse and mental illness are disconnected: *a missed opportunity.*



# Translating Prevention Intervention Research into Public Health Impact

## 1 Orienting Purpose – Strengthening the Translational Function

- Science integrated with practice
- Emphasis on
  - Real-world applications
  - A paradigm valuing a public health impact

## 2 Taking a Broad View of Translational Oriented Science

- 4 Es – types of factors influencing strength of the translation function (4E Impact Factors)
  - Efficacy/Effectiveness
  - Extent of Population Coverage
  - Engagement
  - Efficiency
- Scientific advances viewed vis-à-vis specific factors
- Indicates level of favorable scientific conditions for translation and suggests research agenda

## 3 Selecting a Primary Vehicle

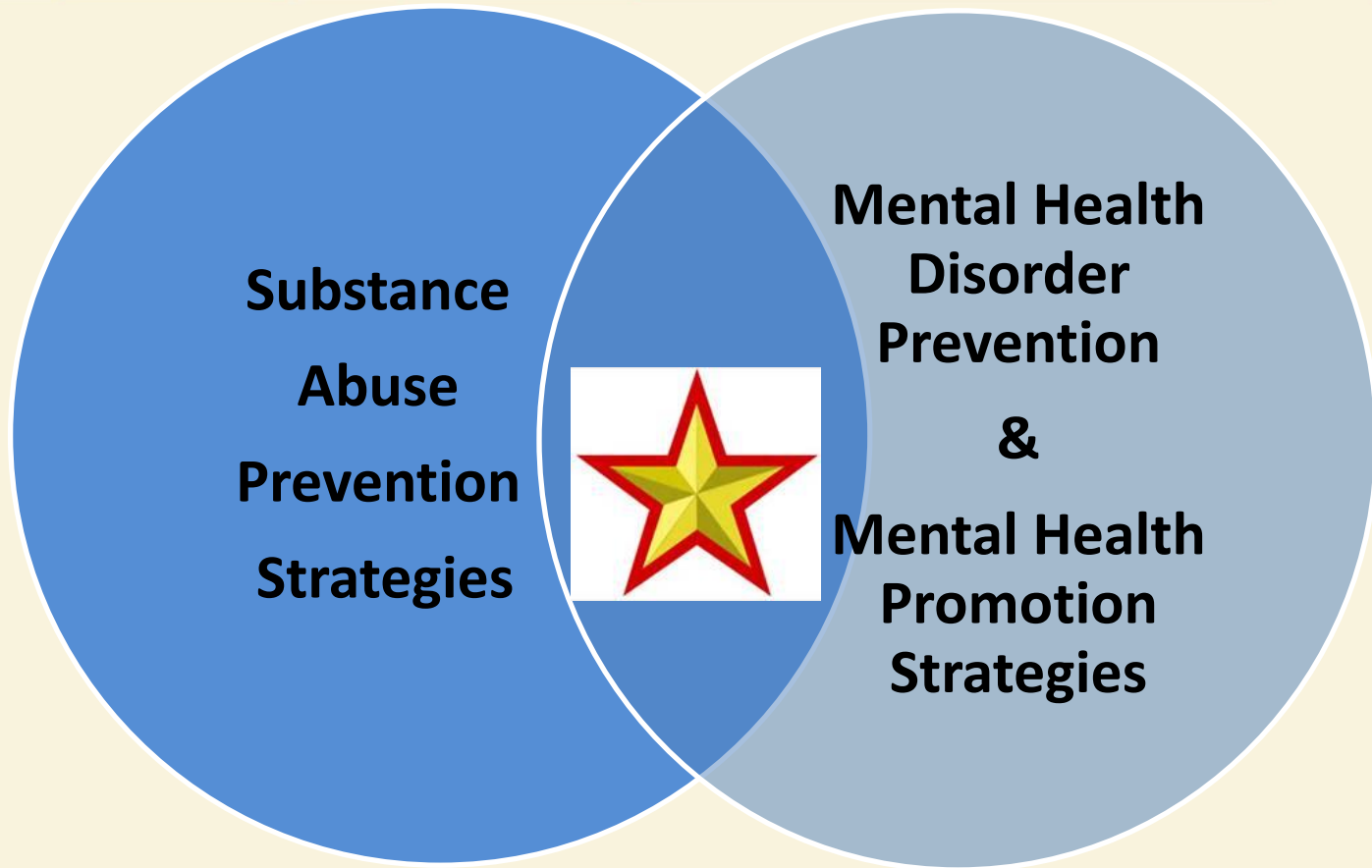
- Practitioner-Scientist Partnerships and Networks
  - Embedded in intervention delivery systems
  - Generating networks for coordinated multi-site projects
- Requires infrastructure and capacity-building

## 4 Directing the Course

- Guidelines and Standards for Translational Research
  - Outcome Research Methods/Standards
  - Impact-Oriented Research/Reporting Guidelines

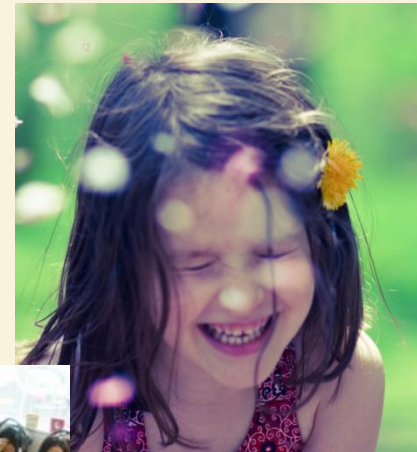
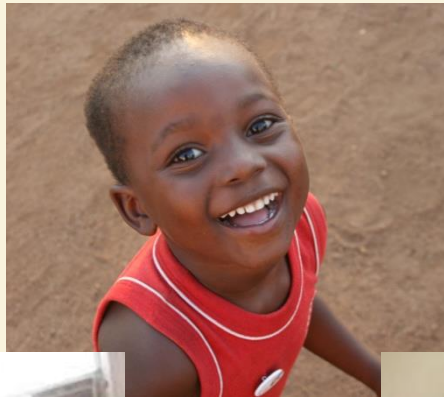
Spoth, R.L. et al. " Translating Family-Focused Prevention Science into Public Health Impact Illustrations from Partnership-Based Research," Alcohol Research & Health, v. 34, Issue no. 2.

# Shared Strategies for SA/MH Prevention and Promotion



# Project LAUNCH (Linking Actions for Unmet Needs in Children's Health)

**Goal: To foster the healthy development and wellness of all young children (birth through age 8), preparing them to thrive in school and beyond.**





# Project LAUNCH: Key Concepts

- Early childhood-focus
- Prevention and wellness promotion (not treatment)
- Expanding and enhancing (not reinventing)
- Linking across sectors/highly collaborative
- State/territorial/tribal and local partnerships
- Infusing mental health knowledge and expertise into all early childhood settings



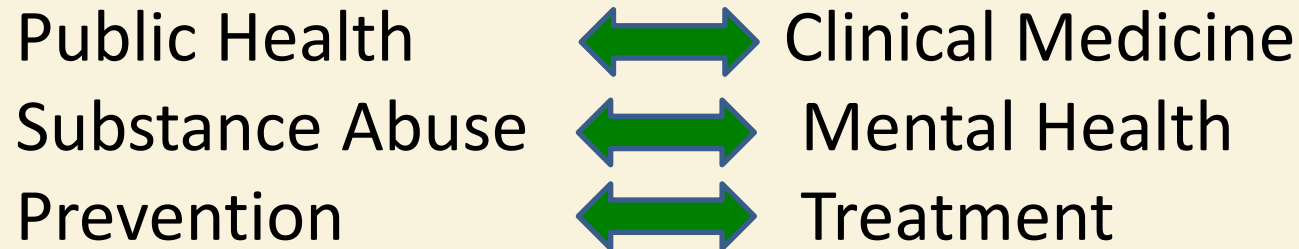
# Project LAUNCH Outcomes in Maine

- Project LAUNCH (Linking Actions for Unmet Needs in Children's Health) promotes children's wellness, birth to age 8.
- Maine's project was funded in FY 2008:
  - Targets one of its rural and highly impoverished counties
  - Supports families with high-risk pregnancies
  - Data show promising results:
    - **Rates of adequate prenatal care for teen mothers (ages 12-19) rose from 62 percent to 85 percent 4 years into the grant.**

# Health Reform Supports a Spectrum of Prevention and Treatment



# Collaborative Opportunities





## ***Collaboration: Foundation for Success***



Center for **Substance Abuse Prevention**

Center for **Mental Health Services**

Center for **Substance Abuse Treatment**

Center for **Behavioral Health Statistics and Quality**

<http://www.samhsa.gov>

