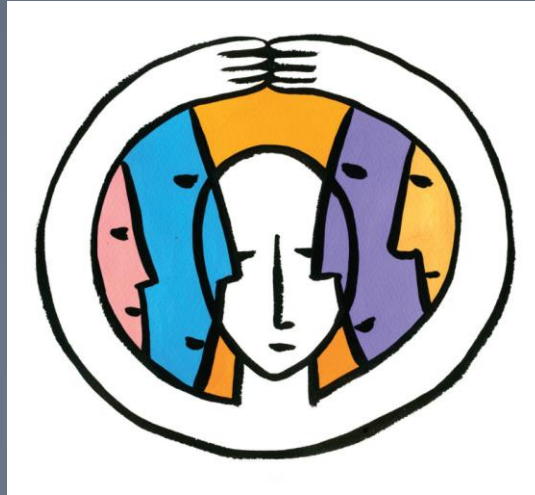


# Common Governance Models for Integrated Data Systems



Whitney LeBoeuf, Ph.D.  
University of Pennsylvania  
Actionable Intelligence for Social Policy

---

The National Academies of Sciences, Committee on National Statistics  
June 1, 2016

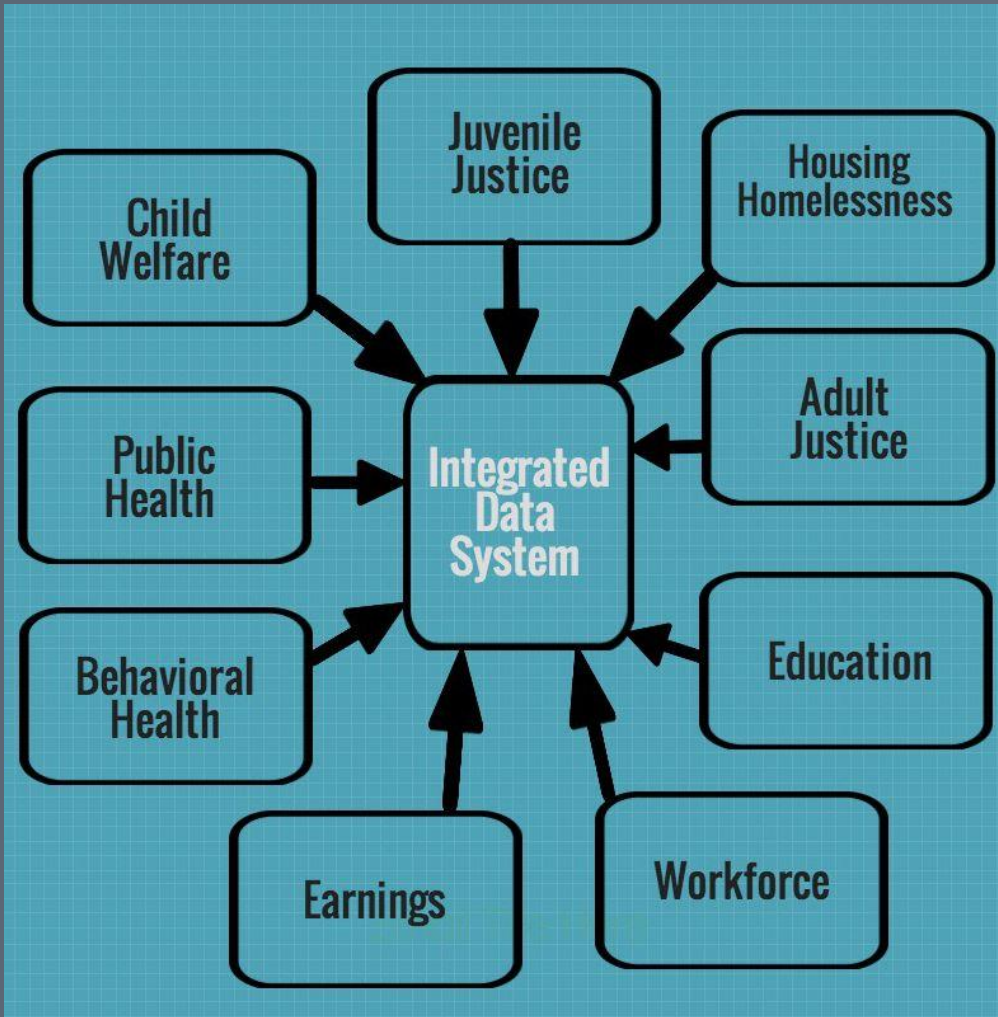
# Integrating Data for a Project

---



- No systematic process
- No data protocol
- No leadership investment

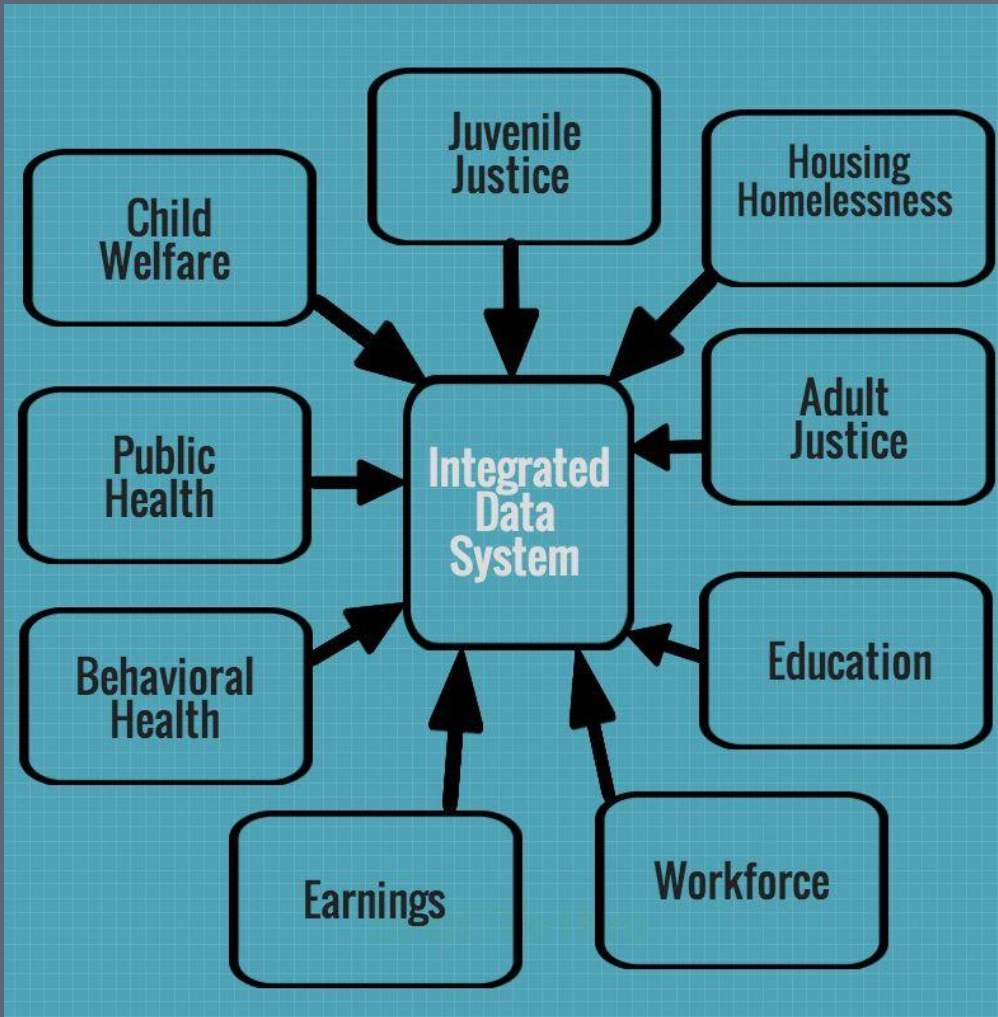
# What is an IDS?



## SYSTEM

- Performance Management (PM)
- Modus operandi
- Logic Model

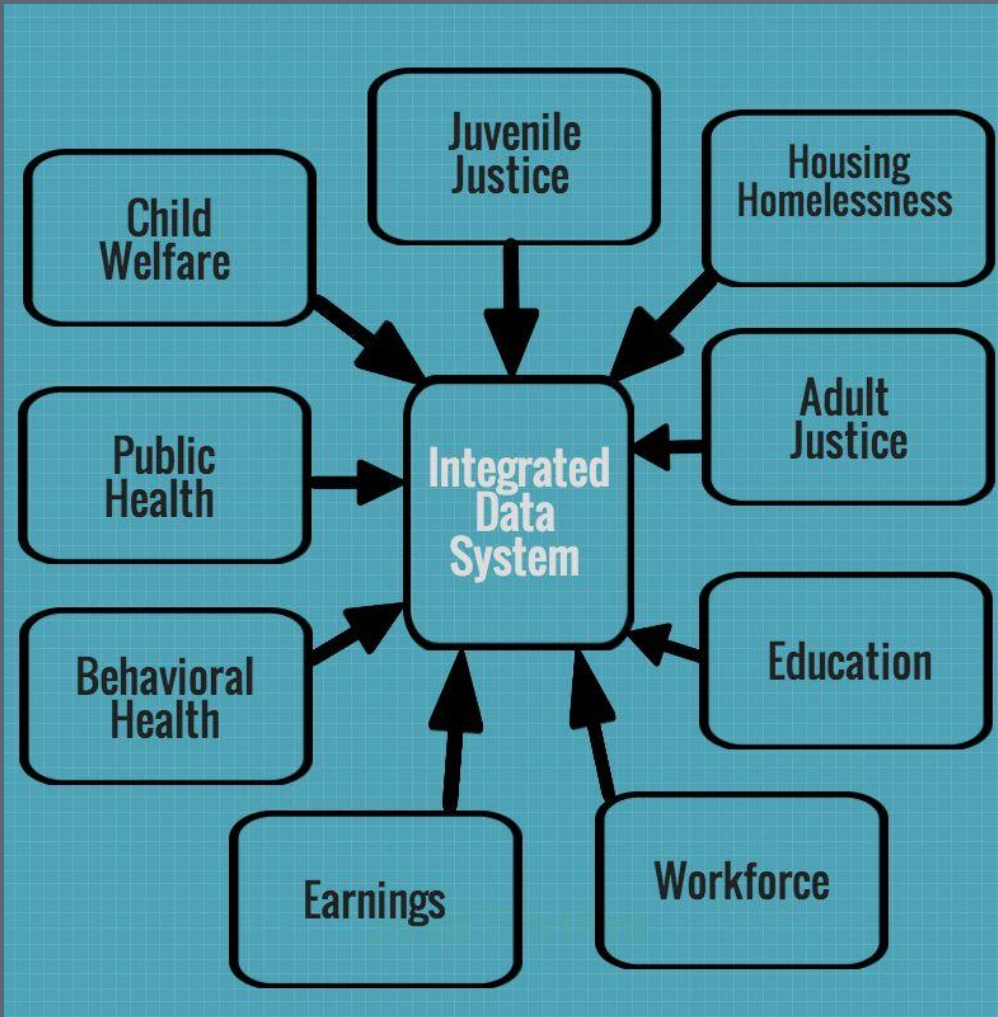
# What is an IDS?



## DATA

- Evidence-Based Policy (EBP)
- Relevance
- Quality

# What is an IDS?



## INTEGRATION

- Continuous Quality Improvement (CQI)
- Leadership commitment
- Data Culture

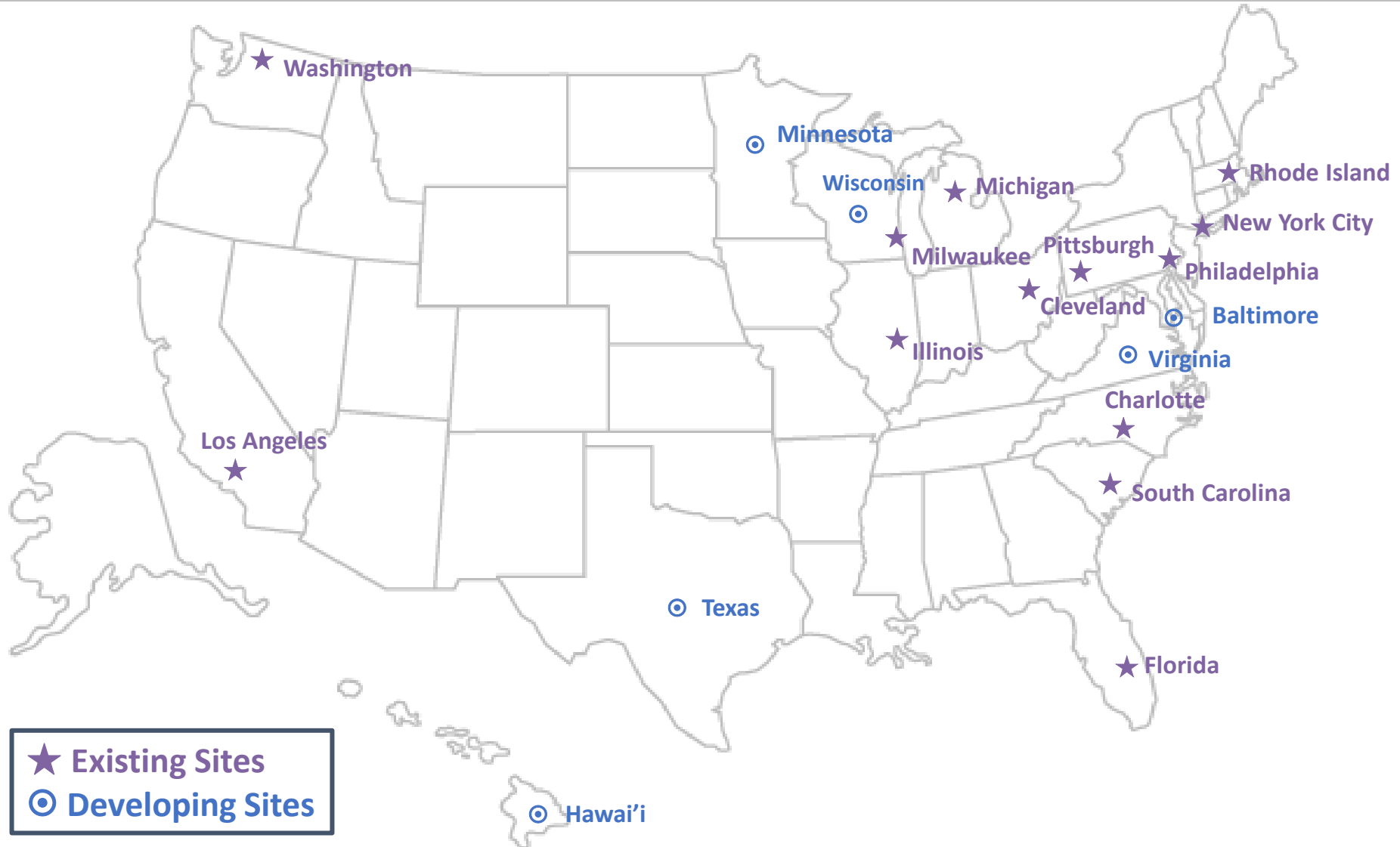




# What is Actionable Intelligence?

Dynamic process that uses quality integrated data within a community of relevant contributors to foster essential dialogue for policy and program improvement.

# Network of Integrated Data Systems



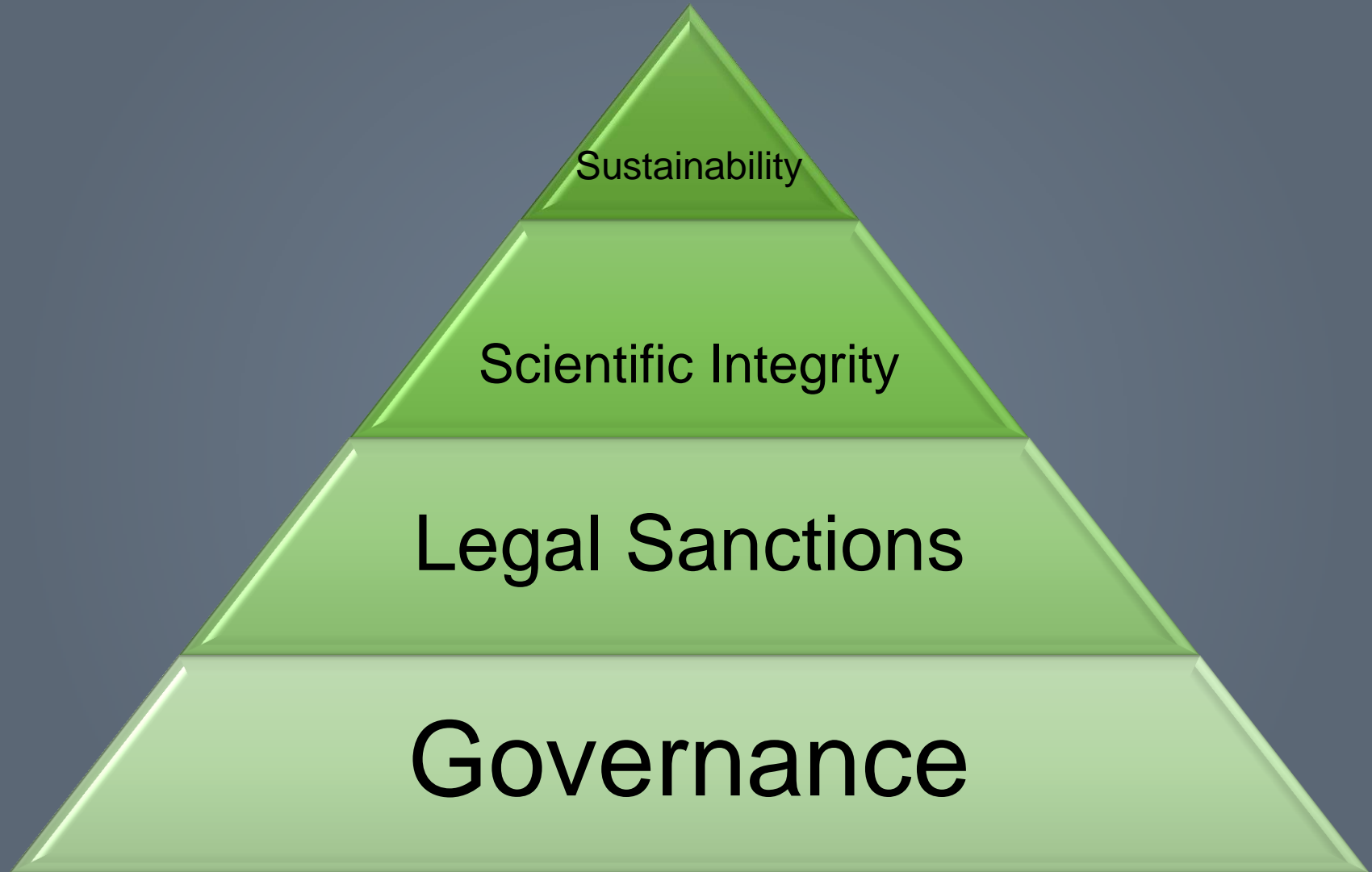
# IDS Organizational Models

---





# Four Critical Components of IDS



# Governance

---

- Foundation for ethical use
- Representation from key contributors
- Develop protocol for operation (MOU)
  - Cross-department priorities
  - Legal sanctioning
  - Research selection
  - Scientific integrity
  - Communicating findings



# Legal Sanctions

---

- Abide by federal, state, and local legal regulations
  - Federal Privacy Act
  - HIPPA
  - FERPA
- “Public interest benefit activity”
  - How does study benefit public?
  - Process for de-identification and destruction
  - Limits on use of data



# Scientific Integrity

---

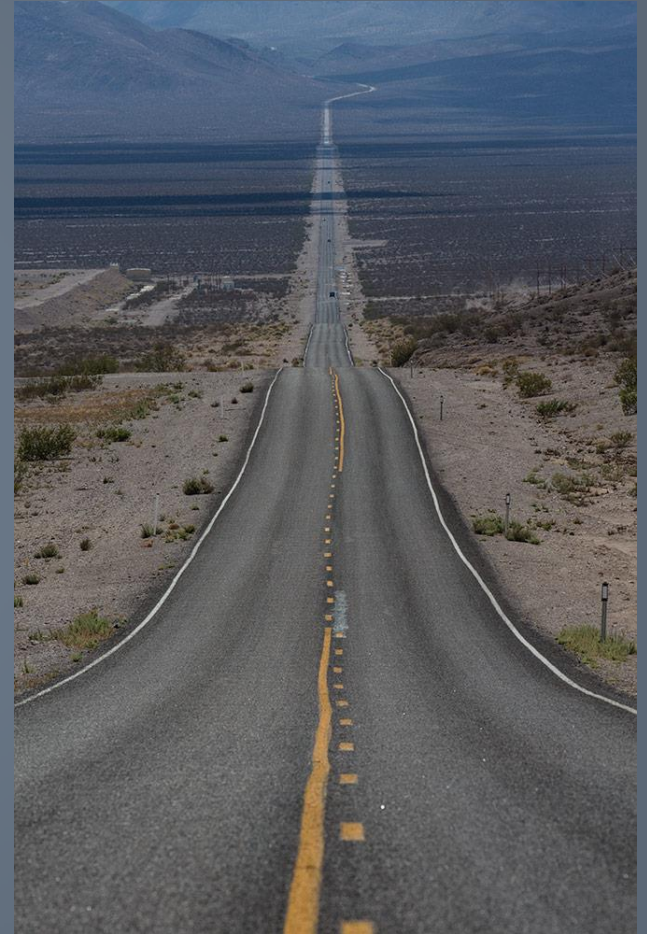
- *Researchable questions*
  - Appropriate research design
  - Quality data elements
  - Appropriate analytic approach
  - Accurate distillation of findings



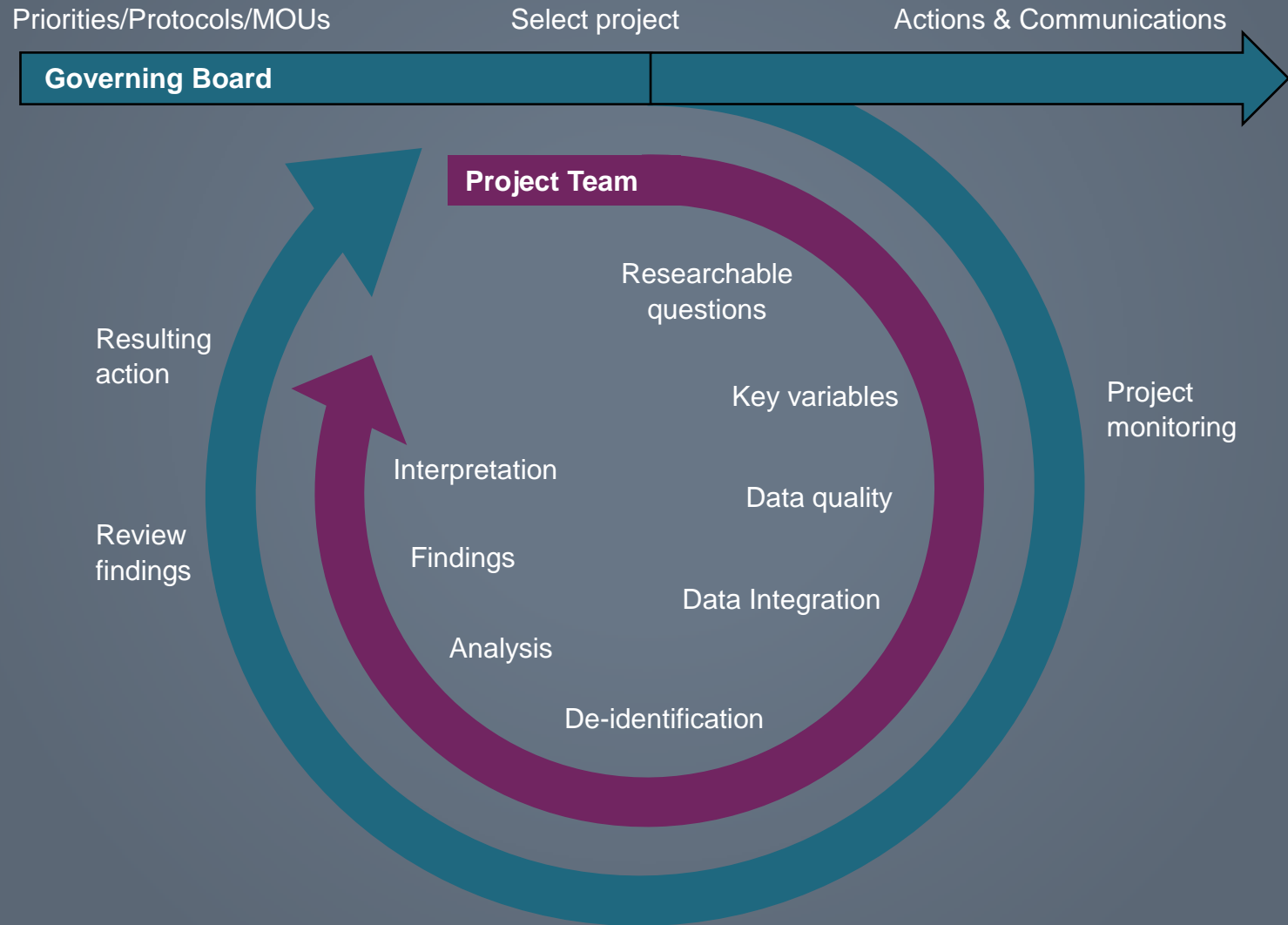
# Sustainability

---

- Economic Sustainability
- Political Sustainability



# IDS Process



# IDS Innovation

---

- Identify challenges
  - Data security
  - Legal inefficiency
  - Researcher responsiveness
  - Scalability
  - Communication
- Convene expert panels and provide guidelines

