

# **Maternal and Child Health Bureau Training the Future Child Healthcare Workforce to Improve Behavioral Health Outcomes for Children, Youth and Families**

**National Academies Workshop  
November 2016**

**Lauren Raskin Ramos, MPH  
Division of MCH Workforce Development  
Maternal and Child Health Bureau (MCHB)  
Health Resources and Services Administration (HRSA)**



# Presentation Agenda

---

- **Overview of Maternal and Child Health Bureau (MCHB)**
- **Describe MCHB Interdisciplinary Graduate Education Training Programs**
- **Highlight Additional MCH Programs that Integrate Behavioral Health**
  - Healthy Start
  - MIECHV
  - Bright Futures
  - Adolescent Health

# Maternal and Child Health Bureau

---

## *Mission*

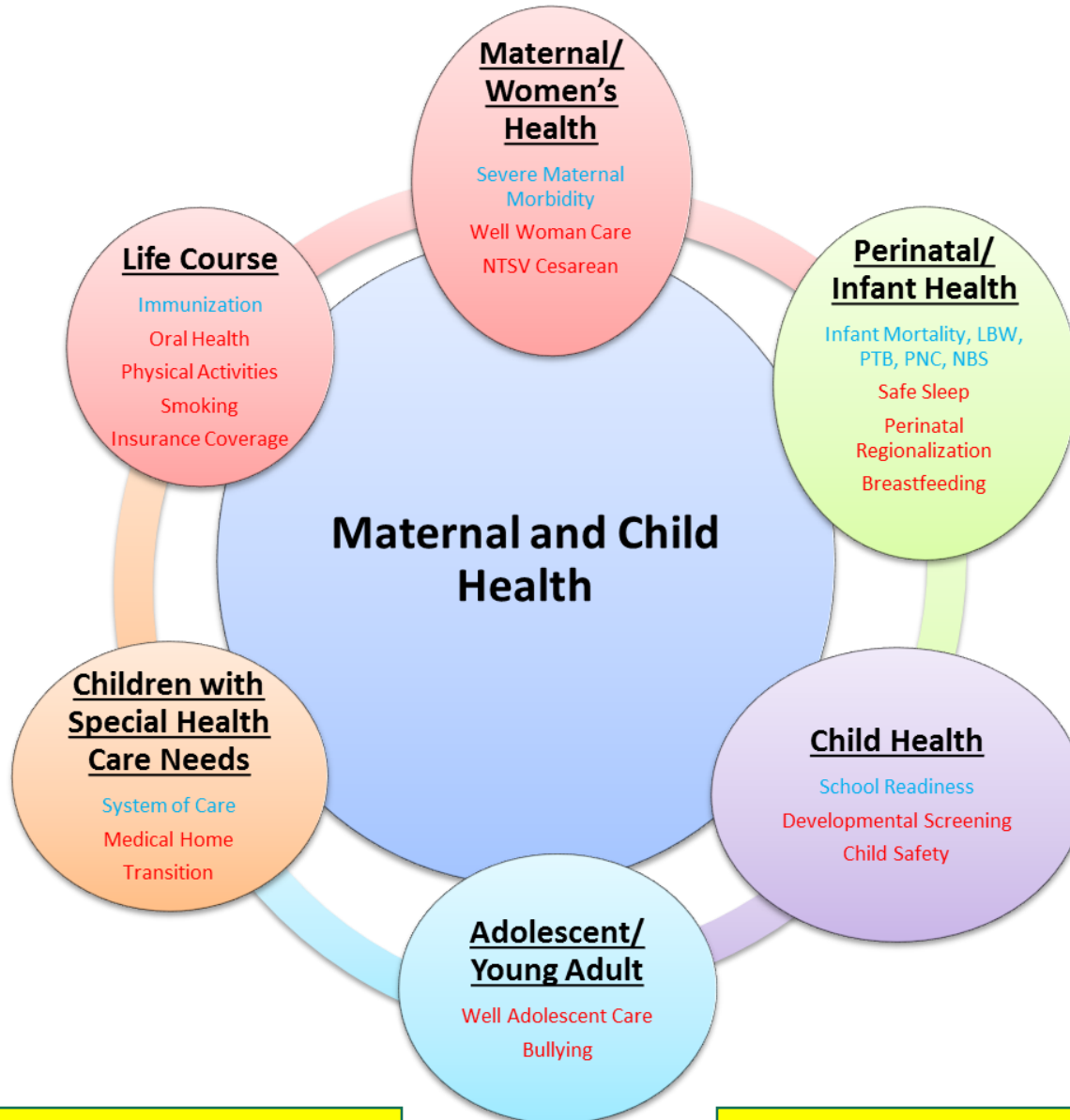
To improve the health of America's mothers & children

## *Vision*

We envision an America where all children and families are healthy and thriving, where every child and family have a fair shot at reaching their fullest potential



# Maternal & Child Health Bureau



# MCHB Workforce Development Programs

## Interdisciplinary/Graduate Training

- Centers of Excellence in MCH Education, Science, and Practice Program
- Developmental-Behavioral Pediatrics (DBP)
- Leadership Education in Adolescent Health (LEAH)
- Leadership Education in Neurodevelopmental and Related Disabilities (LEND)
- MCH Catalyst Program
- MCH Nutrition
- Pediatric Pulmonary Centers (PPC)
- MCH Pipeline Program

## MCH Workforce Development

- Collaborative Office Rounds (COR)
- Healthy Tomorrows
- Healthy Weight Collaborative
- MCH Navigator
- MCH Workforce Development Center
- Reaching Practicing MCH Professionals in Underserved Areas Through Education and Training Program



# Core Program Characteristics



- MCH Leadership
- Family Leadership
- Interdisciplinary Training
- Collaboration with MCH agencies
- Diversity



# **Interdisciplinary Training Programs: Focus on Behavioral Health Professionals**

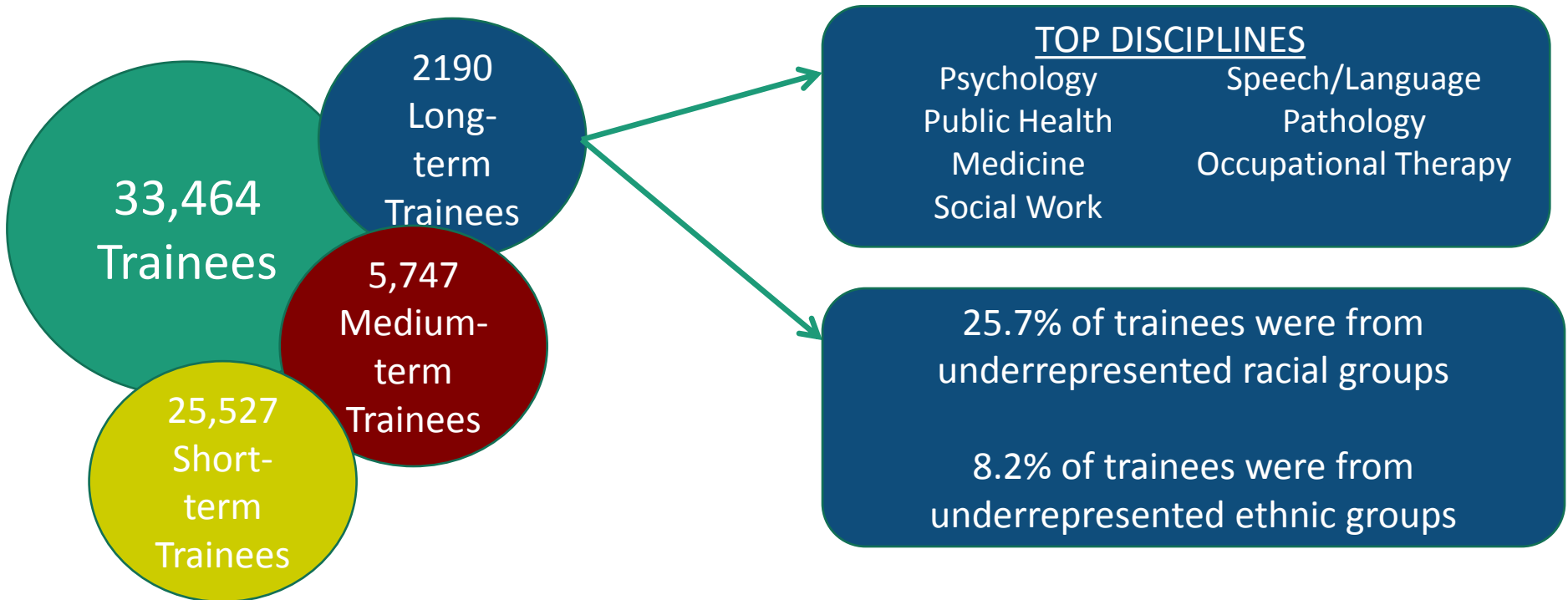
---

- **Developmental-Behavioral Pediatrics (DBP)**
- **Leadership Education in Neurodevelopmental and Related Disabilities (LEND)**
- **Leadership Education in Adolescent Health (LEAH)**
- **Pediatric Pulmonary Centers (PPC)**
- **Collaborative Office Rounds (COR)**



# Impact: By the Numbers

In Fiscal Year 2014, DMCHWD awarded 152 grants, an investment of \$47 million



**284,528 MCH professionals received continuing education**



FY 2014 DGIS data



# Where Are MCH Trainees Now?

84%

MCH leaders



75%

Working in an interdisciplinary manner to serve MCH populations



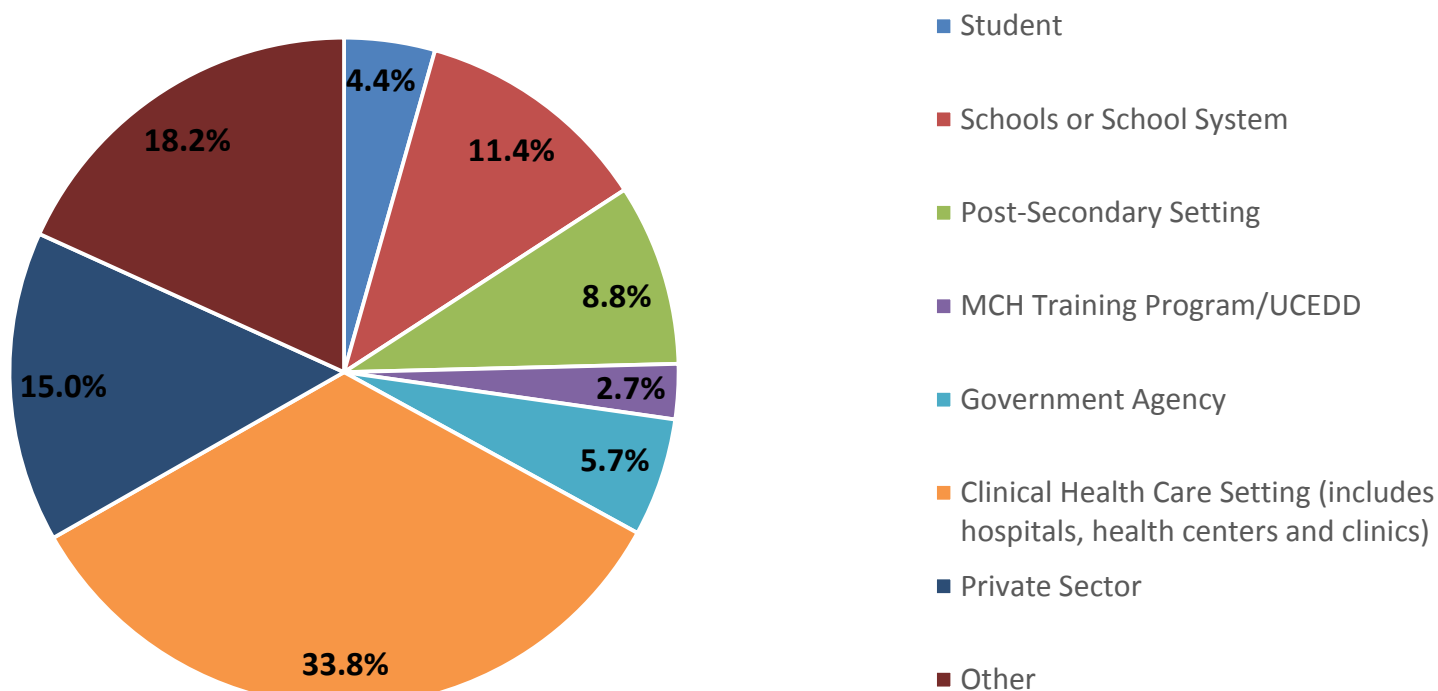
76%

Working with underserved populations or vulnerable groups



# Former Trainees: Employment Settings

Former Trainee Employment Settings  
(Five years after program completion)



N = 752

\*FY 2014 DGIS Data



# Healthy Start

- Established in 1991 as a Presidential Initiative
- Targets communities with high infant mortality rates and adverse perinatal outcomes
- Addresses needs of high-needs women and their families before, during and after pregnancy
- Emphasis on evidence-based practices, standardized approaches, and quality improvement.



# Healthy Start Strategies



*Supporting communities to  
give every child a Healthy Start.*

- Training in mental health and substance use, maternal depression, trauma-informed services
- Inventory of evidenced-based practices in depression, substance use, and intimate partner violence prevention
- Program benchmark for perinatal depression screening using an evidence-based tool
- Fetal Alcohol Spectrum Disorder training to develop skills to engage in effective prevention and early identification activities with pregnant women, mothers and newborns
- Inventory of core competencies for Healthy Start Workers



# Maternal, Infant, and Early Childhood Home Visiting Program (MIECHV)

---

- Voluntary, evidence-based home visiting services during pregnancy and to parents with young children
- Home visits by nurses, social workers, early childhood educators prevent child abuse and neglect, encourage positive parenting, promote child development
- Train home visitors to provide high-quality services, supports and referrals that address behavioral health risks

• Support home visiting workforce to promote positive relational health



# Bright Futures Guidelines



**Bright Futures™**

prevention and health promotion for infants,  
children, adolescents, and their families™

- Guidelines for care for health supervision of infants, children and adolescents
- Prevention-based, family-focused, and developmentally-oriented
- Health promotion themes (promoting family support, child development, mental health, healthy weight)
- Health supervision visits – consensus guidelines for screening and preventive services
- Anticipatory guidance addressing health risks and developmental issues



# Adolescent Health



- Efforts to develop capacity depend on a well-trained workforce that is competent to address behavioral health
- Initiatives that assure access to & delivery of quality, preventive services for adolescents & young adults in multiple settings - behavioral health is a prominent feature
  - Adolescent & Young Adult Health National Resource Center – supports a CoIN for State MCH programs & their partners, including primary care clinicians
  - Collaborative Improvement & Innovation Network (CoIN) on School-based Health Services – school-based health centers & comprehensive school mental health systems
- National Performance Measures for MCH Block Grant
  - Percent of adolescents with a preventive medical visit in the past year
  - Percent of adolescents who are bullied or bully others



# [www.mchb.hrsa.gov/training](http://www.mchb.hrsa.gov/training)



Where MCH  
Leadership Begins

This quarter we're highlighting...

## Interdisciplinary/Interprofessional Training and Practice

DMCHWD HOME

ABOUT

GRANT  
INFORMATION

IMPACT AND  
REPORTING

FOR THE MCH  
WORKFORCE

GRANTEE  
RESOURCES

TRAINEE  
RESOURCES

Share / Save

Search the Training Pages...

### GRANTS INFORMATION



- Funded Projects
- Reporting Requirements
- Life Cycle of a Grant
- Grantee 101

### DIVISION HIGHLIGHTS

[Interdisciplinary / Interprofessional Training and Practice](#)

### IN TRAINEES' WORDS



As a graduate student at the Johns Hopkins Bloomberg School of Public Health, I had the privilege of completing a practicum at the Maternal and Child Health Bureau's Division of MCH Workforce Development. My time at the Maternal and Child Health Bureau was invaluable and allowed me to grow and develop as a public health professional. I took a leadership role in a trainee.... [Read More](#)

### WHAT'S NEW



**NEWS:** [APHA Learning Institute on How to Evaluate Public Health Programs](#) Save the Date: 11/1/2015 8:00 am -11:30 am



**AWARDS:** [Michael Resnick, PhD, honored with Medical School 2015 Carole J. Bland Outstanding Faculty Mentor Award](#)



**NEWS:** [Application to Participate in the National MCH Workforce Development Center Training - Cohorts 3 and 4:](#) Submission deadline June 1

### MCH NAVIGATOR



The [MCH Navigator](#) has developed a [new online self-assessment tool](#) to support the Title V workforce in the states and the MCH community



# Contact Information

---

**Lauren Raskin Ramos, MPH**

**Director, Division of MCH Workforce Development**

**Maternal and Child Health Bureau (MCHB)**

**Health Resources and Services Administration (HRSA)**

**Email: [Lramos@hrsa.gov](mailto:Lramos@hrsa.gov)**

**Phone: (301) 443-6091**

**Web: [mchb.hrsa.gov](http://mchb.hrsa.gov)**

**Twitter: [twitter.com/HRSAgov](https://twitter.com/HRSAgov)**

**Facebook: [facebook.com/HHS.HRSA](https://facebook.com/HHS.HRSA)**

