

**MODELS FOR ADDRESSING
MENTAL HEALTH IN PRIMARY
CARE EDUCATION & TRAINING**

PSYCHOLOGY



**& INTEGRATED
PRIMARY CARE**

Susan H McDaniel PhD ABPP

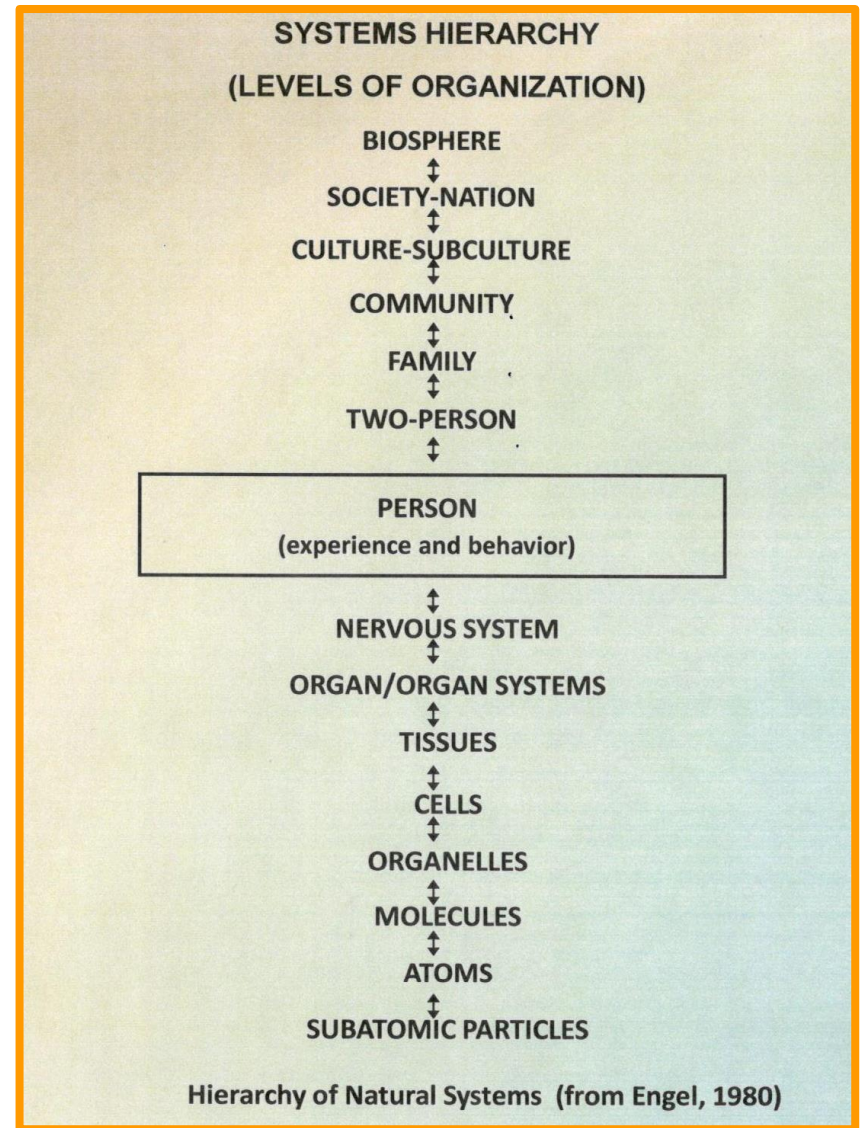
Dr Laurie Sands Distinguished Professor of Families & Health
Director, Institute for the Family, Department of Psychiatry
Vice Chair, Department of Family Medicine
University of Rochester Medical Center
Rochester NY

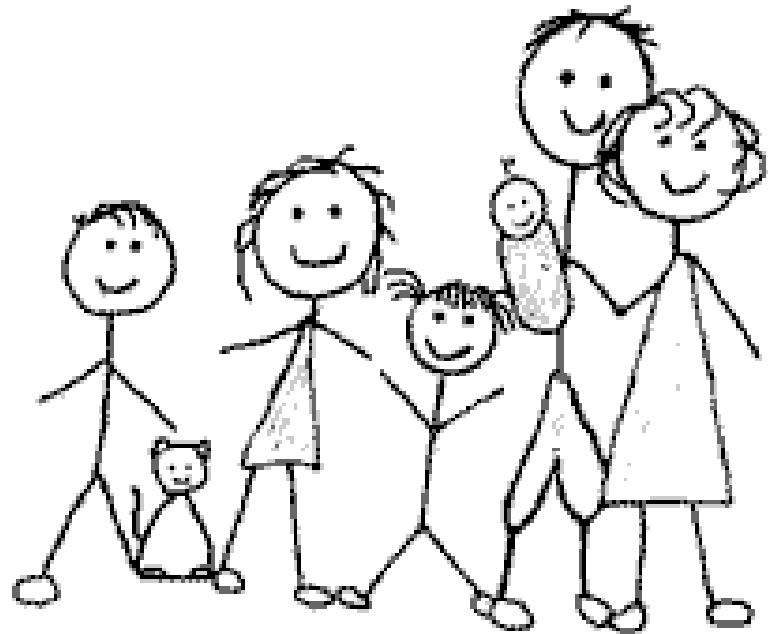
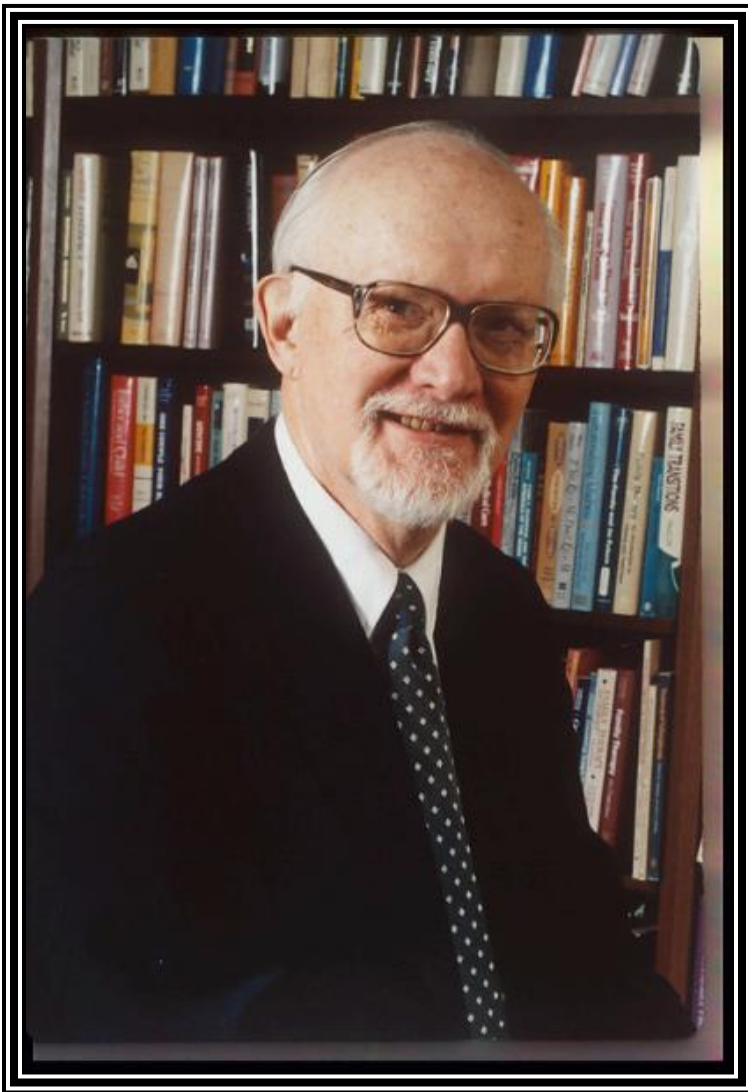
**Training the Future Child Behavioral Healthcare Workforce
Using an Interprofessional Family Systems Approach to Train
Psychology Postdoctoral Fellows in Pediatric Primary Care**

11/29/2016



George Engel, MD
Father of the Biopsychosocial Approach





Lyman Wynne, MD, PhD
Schizophrenia Researcher and Pioneering
Family Therapist



Robert Haggerty, MD
Children and Communities



Jack Medalie, MD
The Hidden Patient
Interaction between physical symptoms
and stress

Susan H. McDaniel
Thomas L. Campbell
Jeri Hepworth
Alan Lorenz



Family-Oriented Primary Care

Second Edition



Springer



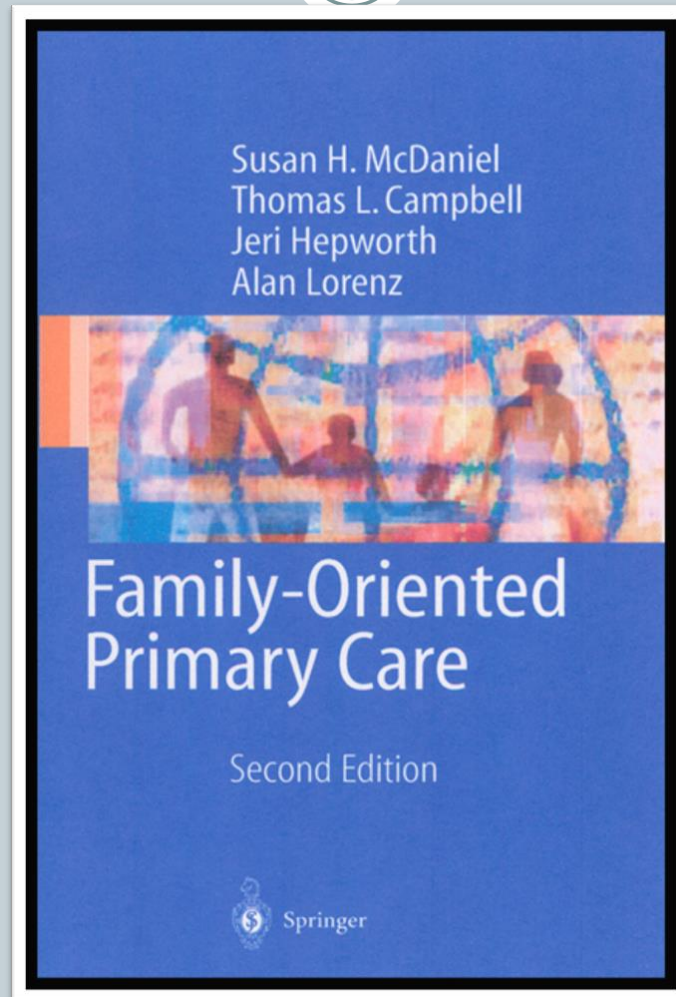
A Biopsychosocial Approach to Health and Illness through Integrated Primary Care

Primary Care Family Psychology Postdoctoral Fellowship



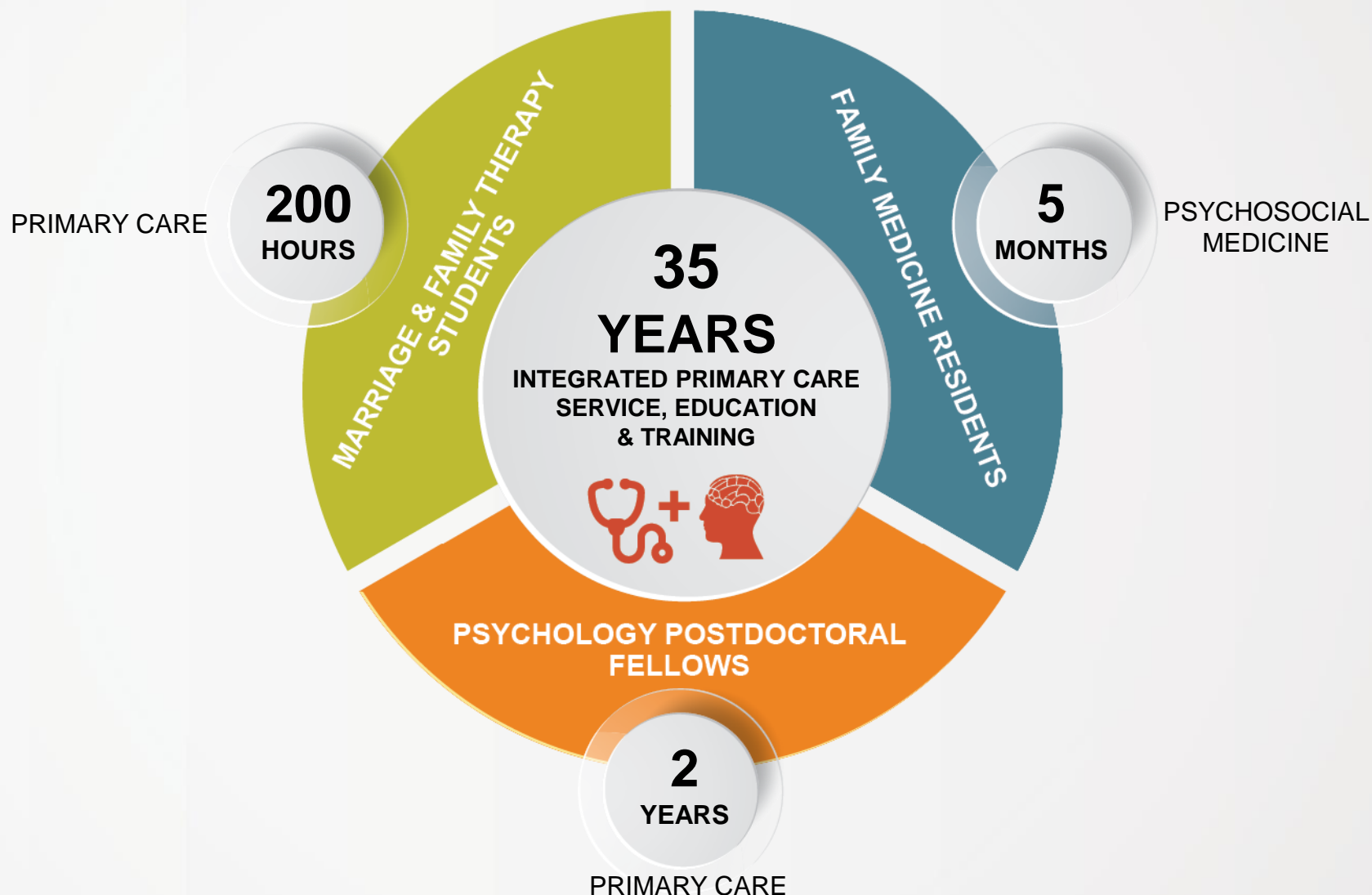
**2 YEARS OF PROFESSIONAL AND
INTERPROFESSIONAL EDUCATION & TRAINING**

Interprofessional Family Systems Medicine Seminar

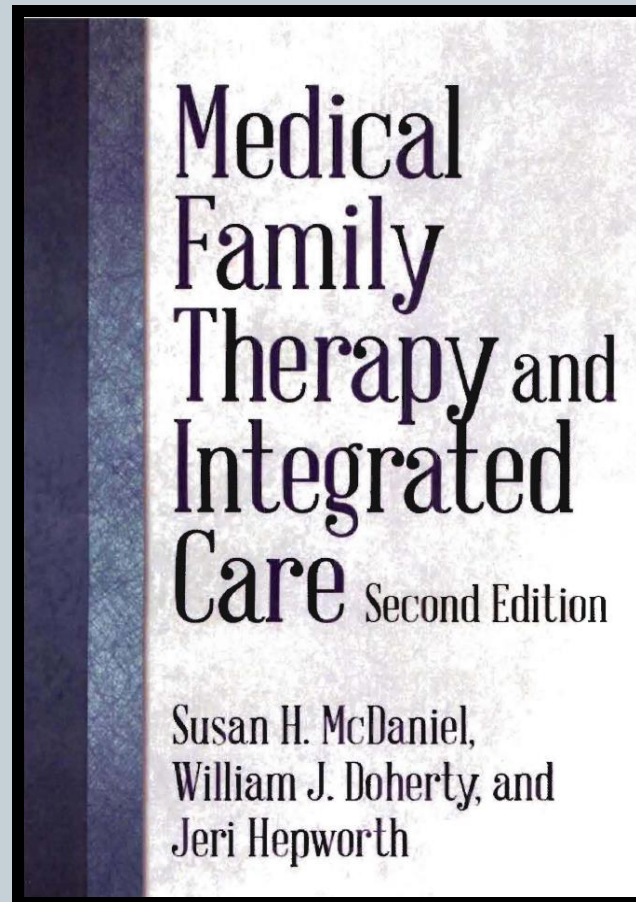




UNIVERSITY OF ROCHESTER FAMILY MEDICINE



Discipline-specific Education & Training



24th

ANNUAL INTERDISCIPLINARY

INTEGRATED HEALTHCARE & MEDICAL FAMILY THERAPY INTENSIVE

PRESENTED BY CO-DIRECTORS:

Susan H. McDaniel,
PhD, ABPP

*Professor of Psychiatry
and Family Medicine;
Director, Institute for the Family*



Tziporah Rosenberg,
PhD

*Assistant Professor, Family
Therapy Training Program
Institute for the Family*



WHEN:

June 12TH–16TH, 2017



WHERE:

**University of Rochester
Medical Center**



CONTACT:

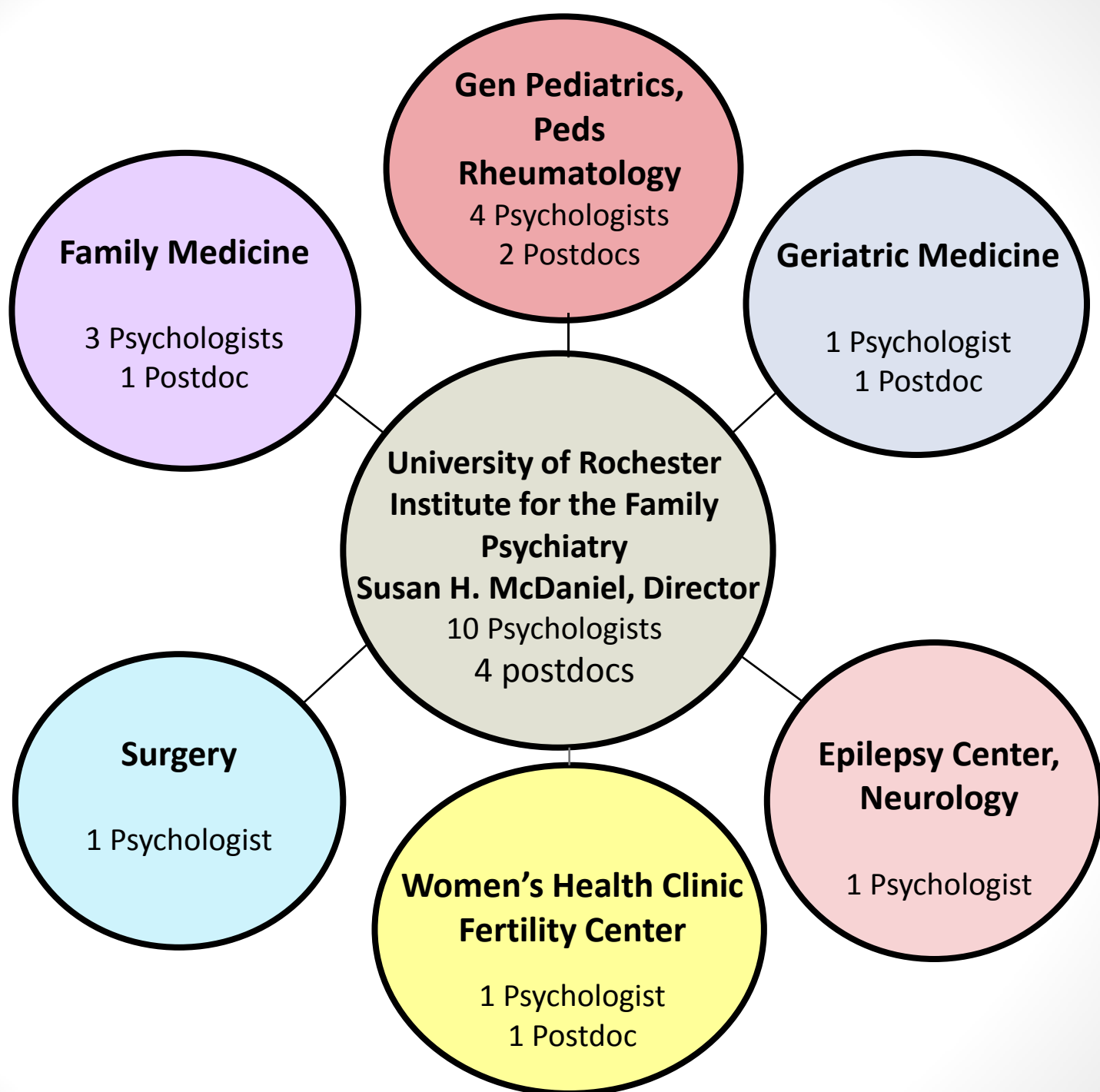
(585) 275-2532

<http://www.urmc.rochester.edu/psychiatry/institute-for-the-family/family-therapy/mfti.aspx>

Outcomes from Psychology Fellows' Family Therapy Training



- *Excellent individual adult, couple, & family therapy skills
- *Apply family systems concepts and skills to facilitating primary care team effectiveness
- *Supervise masters level clinicians and paraprofessionals





Primary Care Family Psychology Pediatric Postdoctoral Fellows

Susan H. McDaniel
Thomas L. Campbell
Jeri Hepworth
Alan Lorenz



Family-Oriented Primary Care

Second Edition



S E C O N D E D I T I O N

*Using Family Interviews
in Children's Medical Care*

The Family *Is* the Patient

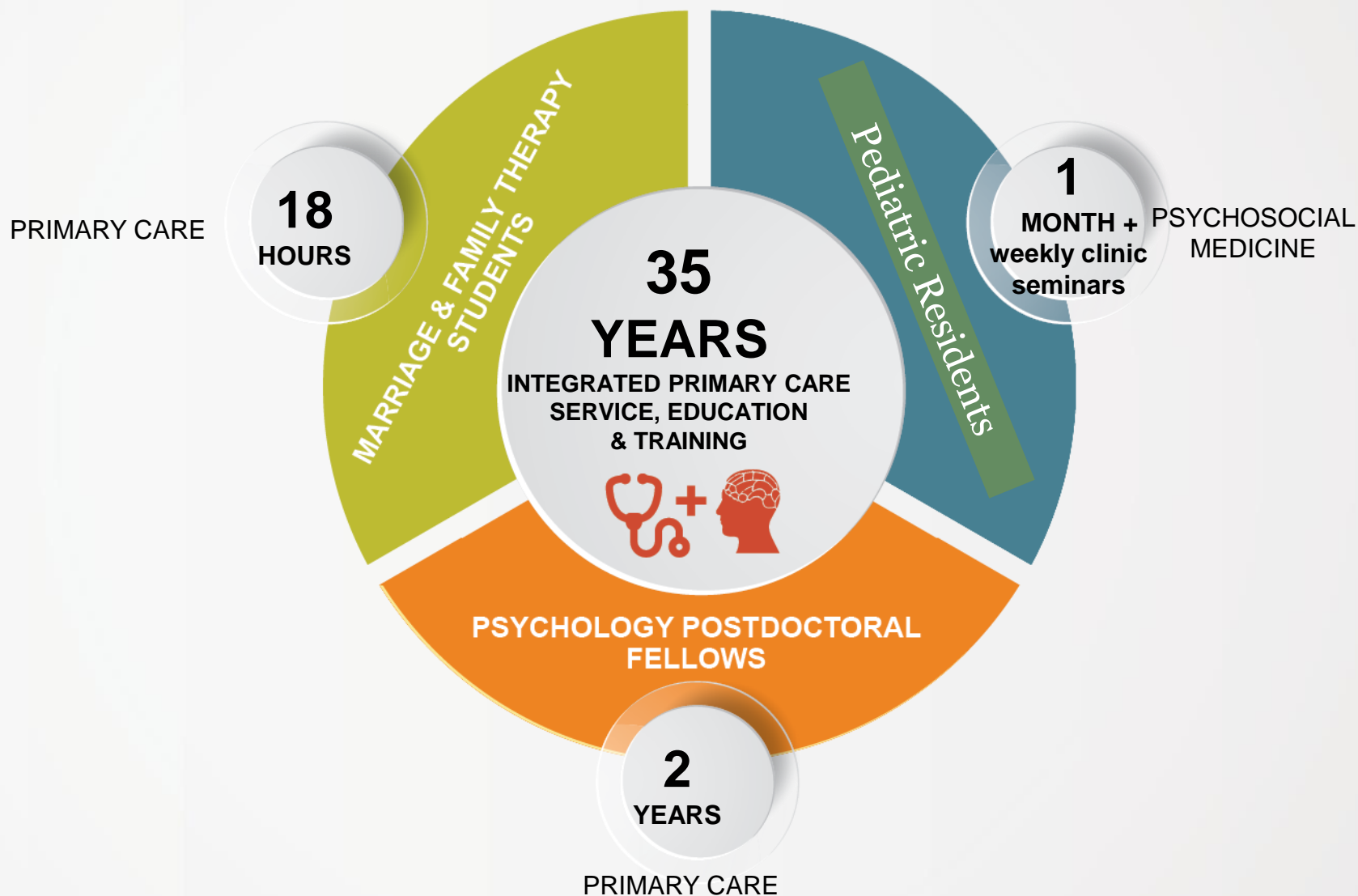


BAYARD W. ALLMOND, Jr.
J. LANE TANNER

with
Helen F. Gofman



UNIVERSITY OF ROCHESTER PEDIATRICS



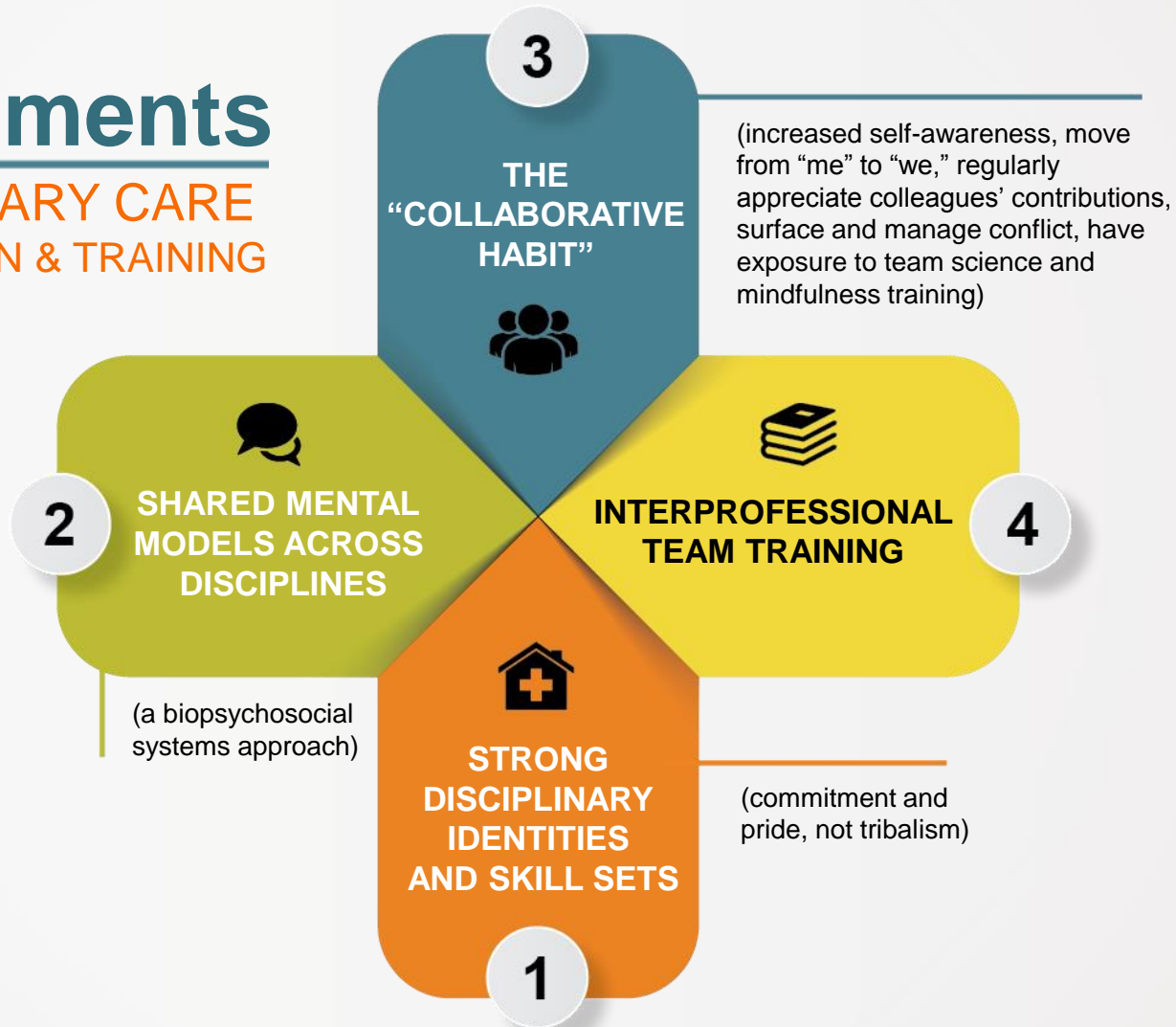
Training the Future Child Behavioral Healthcare Workforce
Using an Interprofessional Family Systems Approach to Train
Psychology Postdoctoral Fellows in Pediatric Primary Care

WASHINGTON DC

11/29/2016



4 elements OF PRIMARY CARE EDUCATION & TRAINING



Evaluation of Pediatric Residency Training in Integrated Primary Care

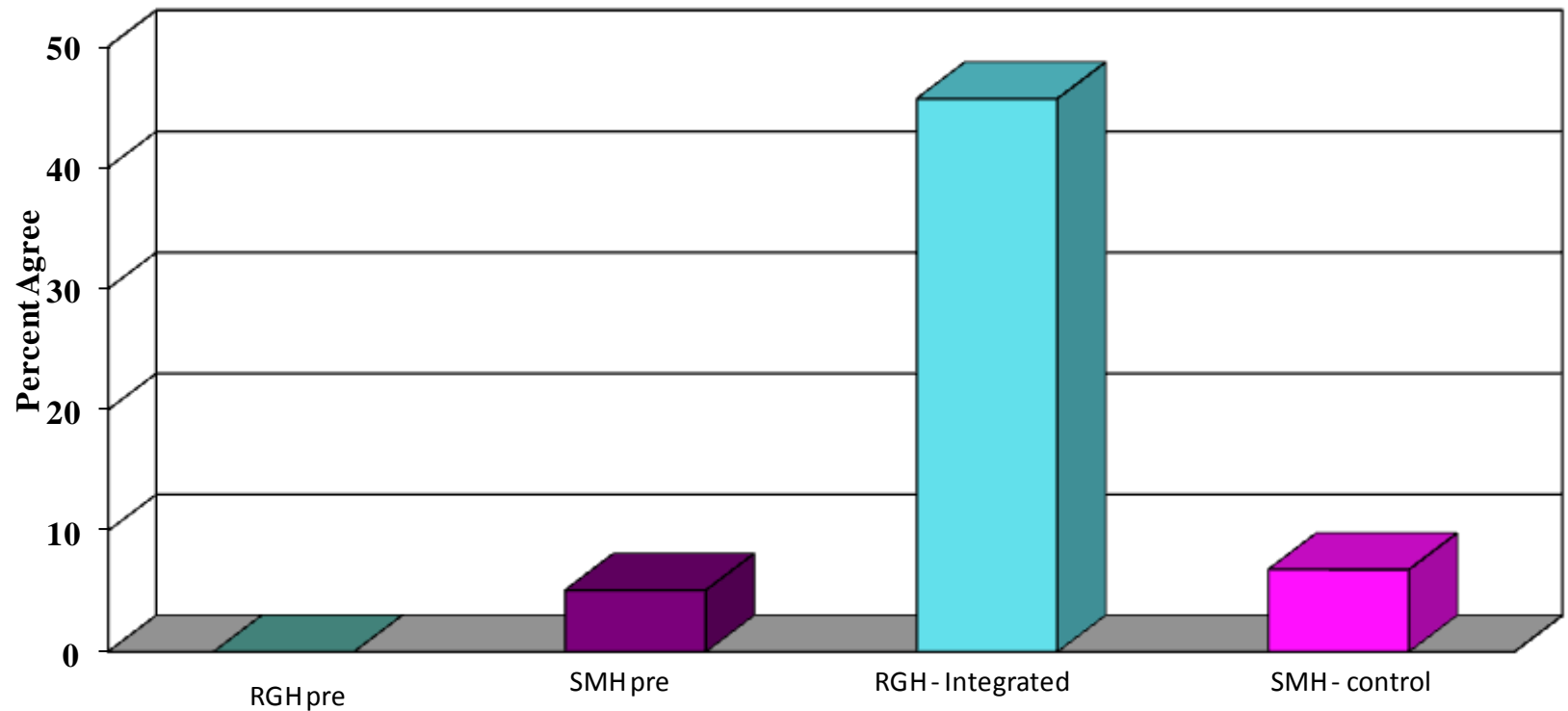


Compares outcomes from 3-year clinical placements at either the:

- *University ambulatory primary care clinic with traditional psychiatric/psychological consultation and referral, or the
- *Large, urban, community hospital's underserved ambulatory integrated primary care clinic

Surveys of 174 of 245 alumni (71%) over 15 years

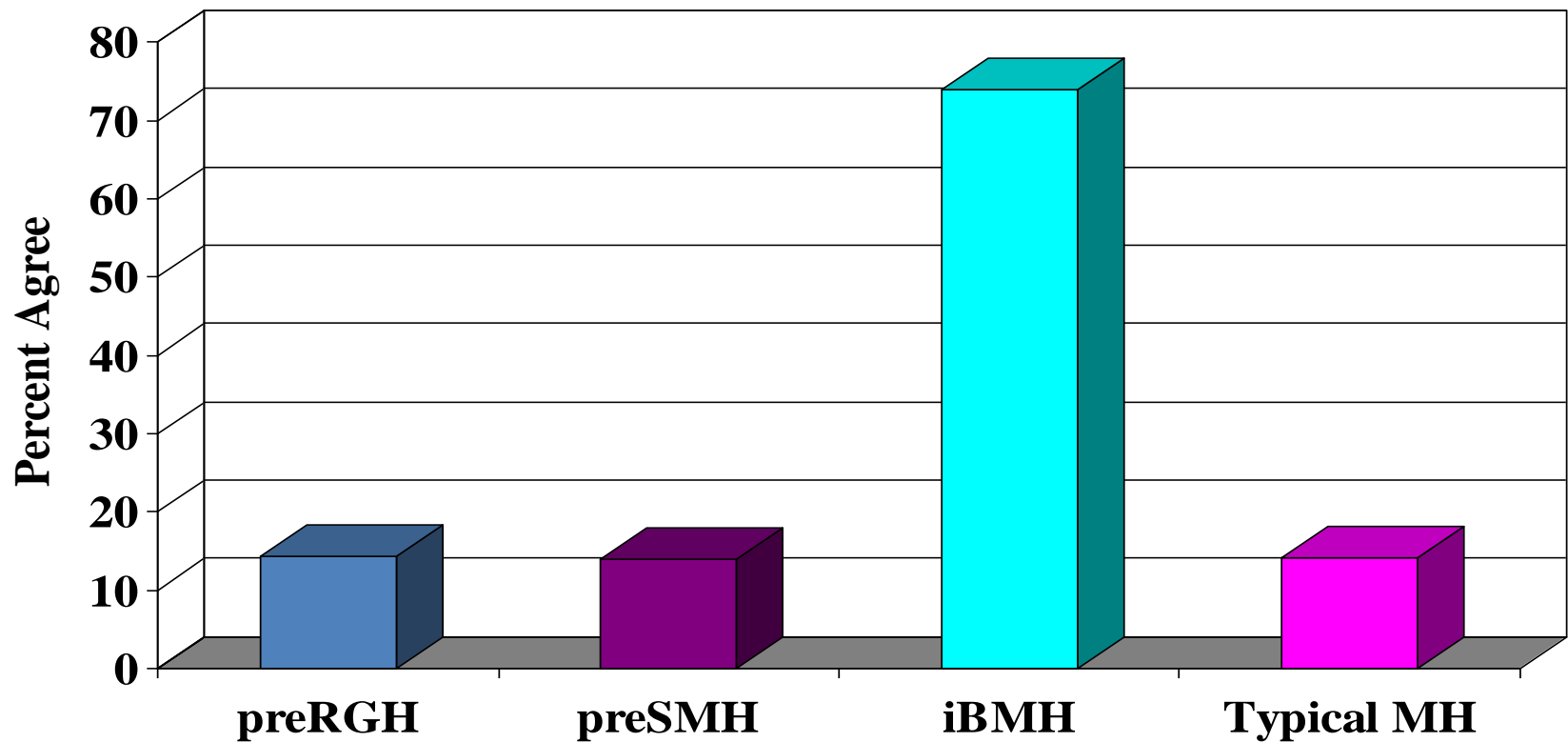
“Engaged in joint treatment planning with
BMH professional during continuity clinic”



$p < .001$

Garfunkel et al, *Acad Med*, 2011

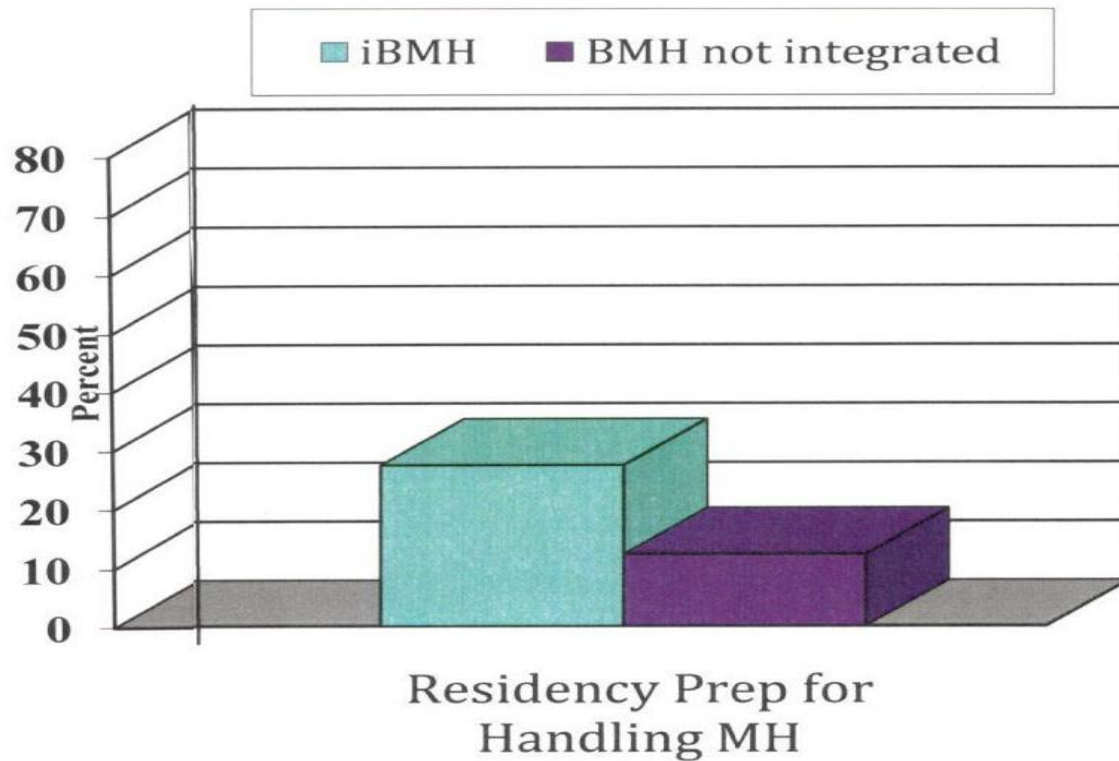
“Continuity clinic experience prepared me for collaborating with mental health professionals”



p<.001

Garfunkel et al, *Acad Med*, 2011

CC preparation for **collaboration** vs. residency preparation for handling **MH** Issues



$p < 0.001$

$p = 0.02$



The Difficulty in Scaling Up the Primary Care Family Systems
Integrated Care Model:

Training Faculty!



INTRODUCTION TO
**INTEGRATED PRIMARY
CARE**



World Health Organization

(Patel, 2013)

Integrated primary care is the only feasible way to address problems of access and stigma that result in treatment gaps for common mental, behavioral, and substance use problems globally, for children and adults.



**Primary Care Family Psychology Postdoctoral Fellowships
are one answer!**



Thank you!



Pisani A, leRoux P & Siegel D. (2011) Educating residents in behavioral healthcare and collaboration: Integrated clinical training of pediatric residents and psychology fellows, *Academic Medicine*. 86:2:166-73.

Garfunkel L, Pisani A, leRoux P & Siegel D. (2011) Educating residents in behavioral healthcare and collaboration: Comparison of integrated and conventional training models, *Academic Medicine*. 86:2:174-179.