



THE DATA CENTER

Independent Analysis for Informed Decisions in Southeast Louisiana

# *Using data to respond and recover from disasters*

**Dr. Allison Plyer**

**[allisonp@datacenterresearch.org](mailto:allisonp@datacenterresearch.org)**

**[@allisonplyer](https://twitter.com/allisonplyer)**



**Data vacuum hinders decision-making around short-term priorities, resource allocation and long-term recovery planning following a disaster.**

**(National Research Council, 2007)**

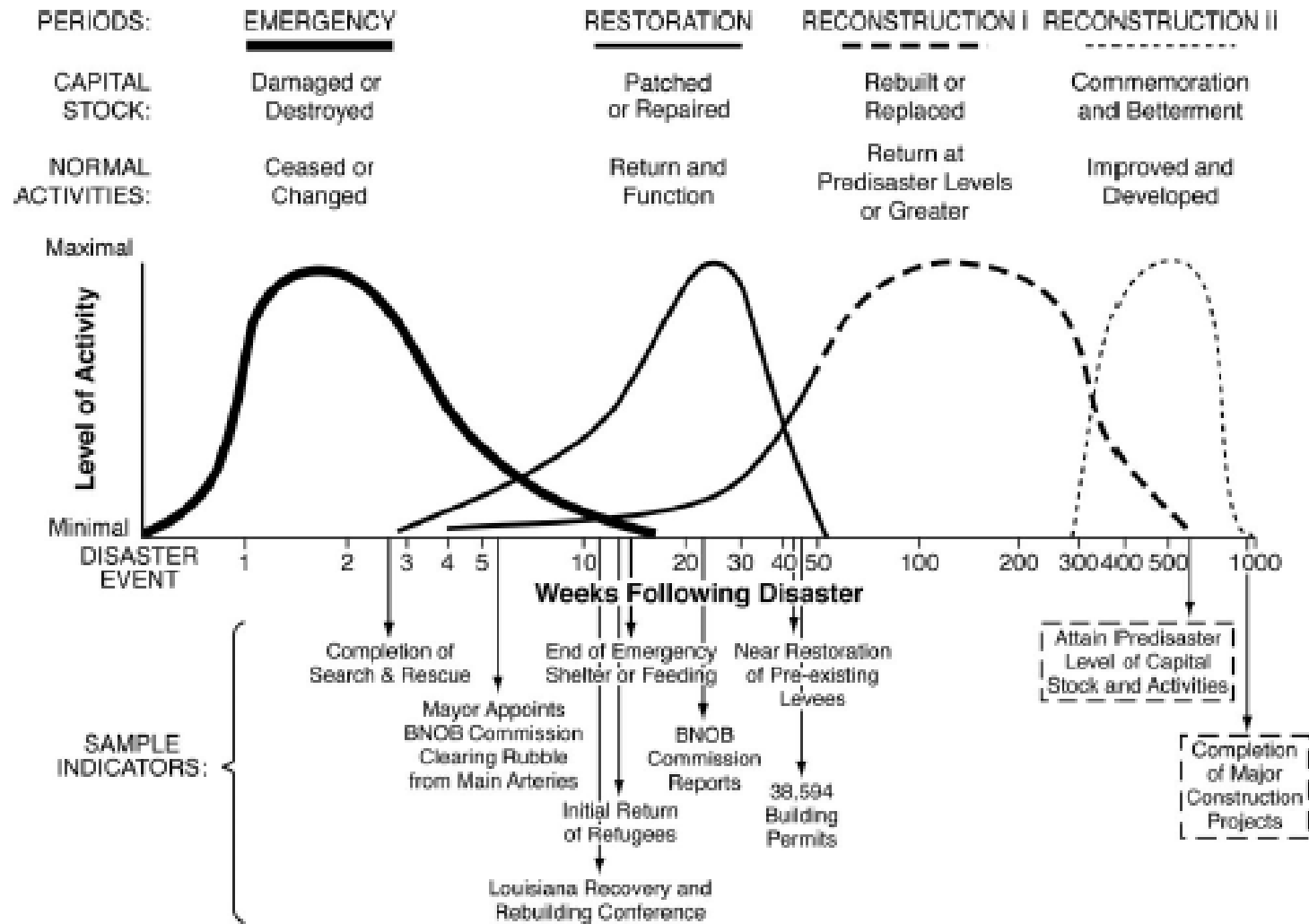


- 1. Every disaster is different but they do have predictable phases.**
- 2. For each phase, identify specific audiences and use cases.**
- 3. Deliver data in formats most consumable for each specific audience/use case.**

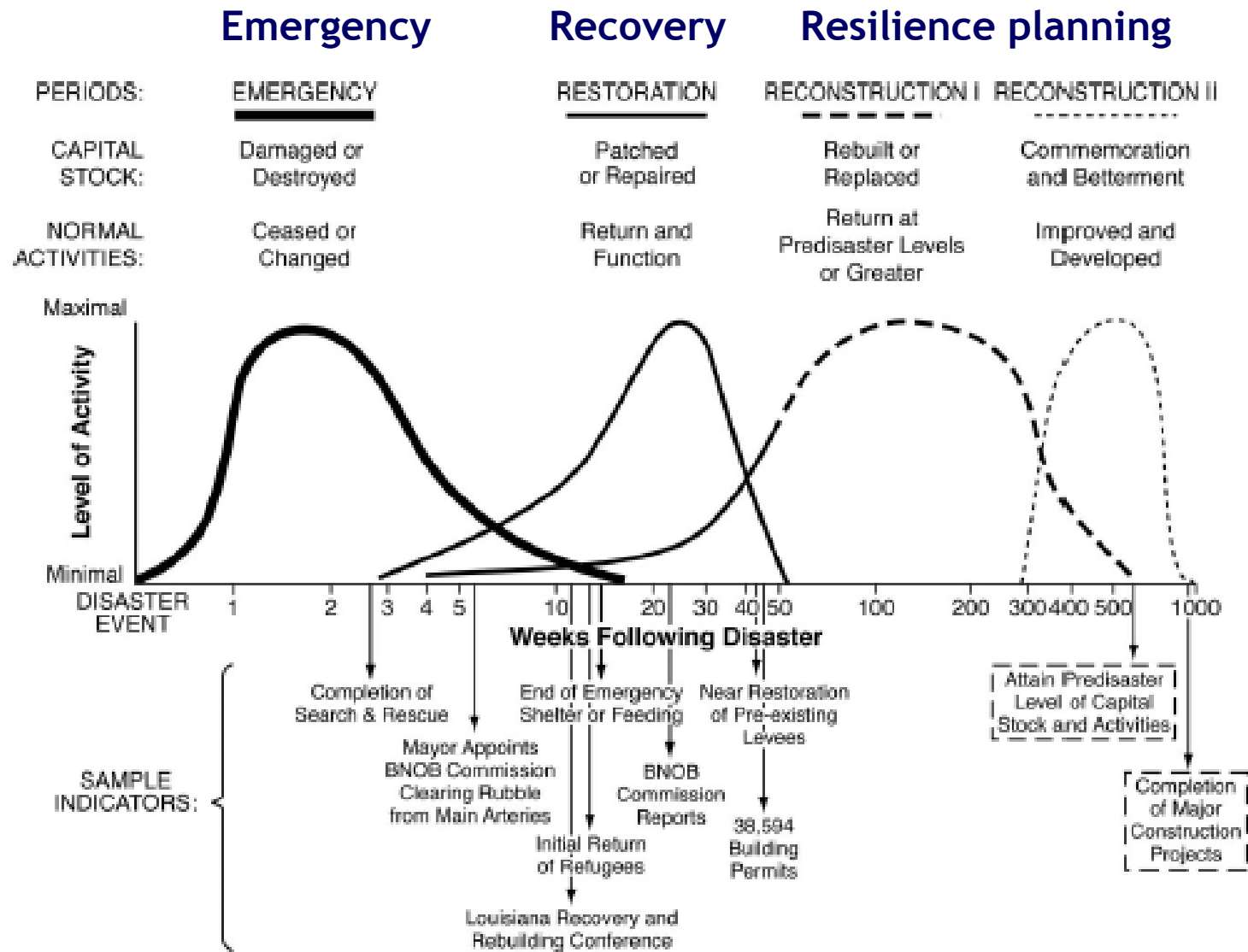




# 1. Every disaster is different but they do have predictable phases.







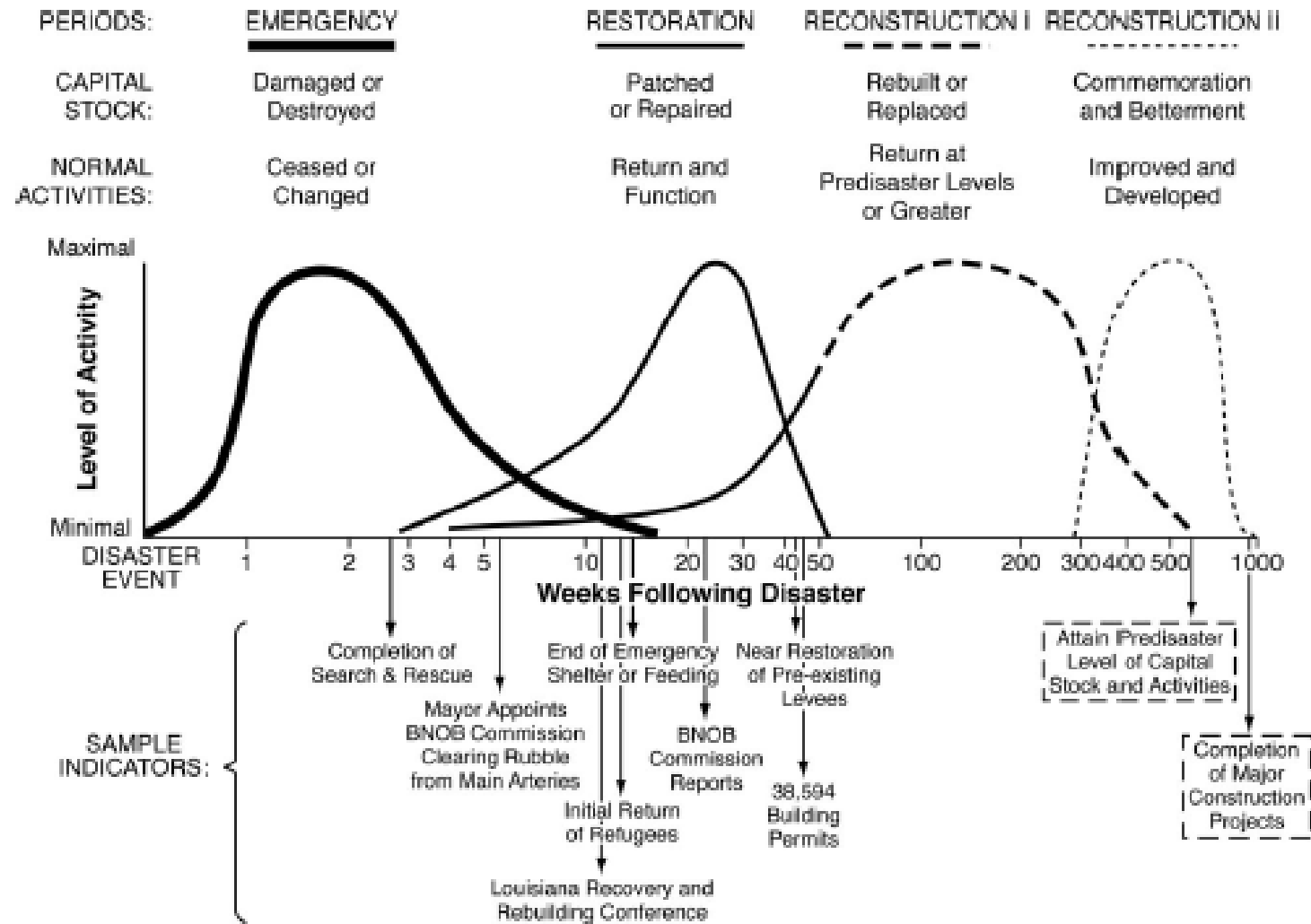


## Preparedness

## Emergency

## Recovery

## Resilience planning





2. For each phase, identify specific Audiences and Use cases.

<u>Audiences</u>	<u>Use cases</u>			
	Preparedness	Emergency	Recovery	Resilience planning



# Greater New Orleans COMMUNITY Data CENTER

Strategic use of local information in planning and persuasion

In just 3 clicks you can see all kinds of statistics about your neighborhood in Orleans Parish... or even more stats for each parish in the 10-parish New Orleans area!

For New Orleans neighborhoods, click on an area below... (Scroll down to find data for the GNO 10-Parish area.)



## 'Numbers Talk' Newsletter

To make sure you're informed of all the latest releases of data, sign up for our monthly e-mail newsletter.

Your e-mail address:

Sign Up!

(We respect your privacy and will not use your e-mail for any purpose other than sending you the newsletter.)

## Current Data Sources

For Orleans neighborhoods:

- U.S. Census (demographics, income, education & more)

For each GNO parish:

- U.S. Census
- LA Dept of Education
- LA Dept of Health & Hospitals
- Medicaid
- Kid's Count
- FBI
- LA Dept of Elections & Registration

How often is this data updated?

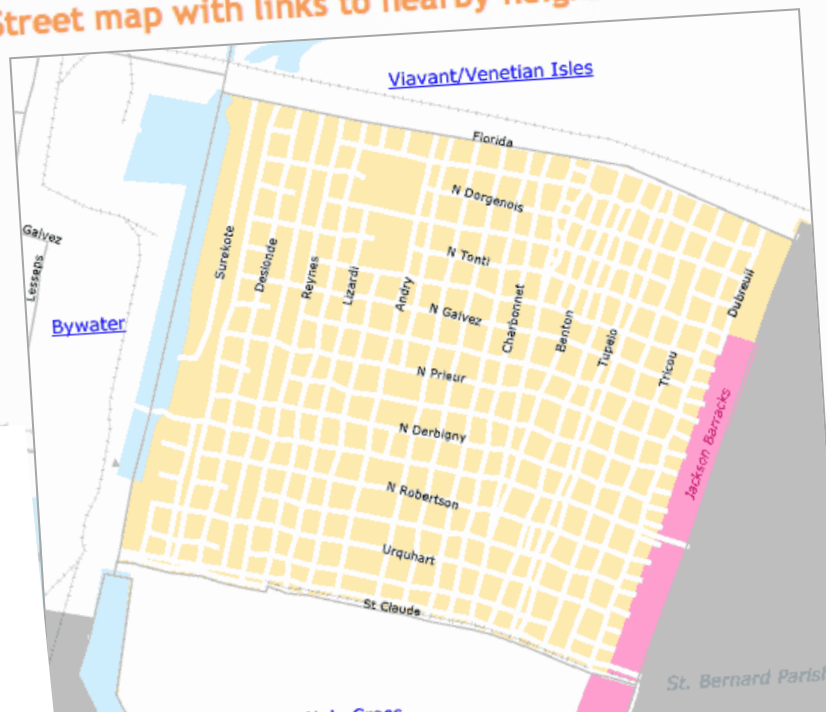


**Data Tables:**[\(Is this data current?\)](#)[People & Household Characteristics](#)[Housing & Housing Costs](#)[Income & Poverty](#)[Transportation](#)[Employment](#)[Educational Attainment](#)[Immigration & Language](#)[Disabilities](#)[Neighborhood Characteristics](#)[Give us your feedback...](#)

## Lower Ninth Ward Neighborhood

"The Lower Ninth Ward consists of two distinct neighborhoods, [Holy Cross](#) and this neighborhood, the Lower Ninth Ward, called by some, *The Lower 9*. The neighborhood is rich with small businesses, barber and beauty shops, corner stores, eateries, day care centers, as well as public schools and some say, far too many churches. It has a resilient history of survival and activism." [Read more in the [Neighborhood Snapshot](#)]

Street map with links to nearby neighborhoods:





# St. Roch Neigh Attainment

Data Tables: [People & Hou](#)  
[Transportation, Employmen](#)  
[Neighborhood Characteristi](#)

## Educational atta

### Definitions and source li

#### Level of schooling (2000)

Total population 18 year  
 Less than 9th grade  
 9th to 12th grade,  
 High school diplom  
 Some college or A  
 Bachelor's degree

#### Teens without high (2000)

Total population 16  
 % not enrolled in  
 high school grad

Source Citation: U.S. C  
 Community Data Center

## Enrollment

## Household Charac

Which number do  
 household characteris  
 recommend you take  
 view data on what typ  
 Note, we have chosen  
 of the Census' narrow

### Definitions and source li

#### Households by type (2000)

Total households  
 Female householder (n  
 present) with children  
 Male householder (no  
 with children under 18  
 Married-couple family  
 under 18  
 Nonfamily household  
 under 18

Households with no  
 years

#### Children in house

Population under 1  
 households

Children living a

Done

## Grandparents as caregivers

Recently, there has been a lot of interest in understanding the role of grandparents as caregivers. Census 2000 data focuses on the number of grandparents who have responsibility for a grandchild (or grandchildren) in the household they live in, but does not give us information on the number of children who have grandparents as caregivers.

### Definitions and source links

Grandparents as caregivers (2000)	St. Roch	Orleans Parish	Louisiana	United States
Total grandparents living in households with grandchildren under 18				
Grandparent responsible for grandchildren under 18	708	17,338	122,240	5,771,671
Grandparent not responsible for own grandchildren under 18	53.4%	54.7%	54.9%	42.0%
Source Citation: U.S. Census Bureau. <i>Census 2000 Sample Characteristics (SF3)</i> . From a compilation by the GNO	46.6%	45.3%	45.1%	58.0%

Community Data Center. <<http://www.gnocdc.org>>

### Find related data...

For data on **houses people live in**, whether they **rent or own**, etc., visit the [Housing and Housing Costs](#) data page.

You'll find data on **family income** and **people living in poverty**, in the [Income & Poverty](#) data tables.

Done





[Home](#) » [Ask Allison](#)

## Ask Allison



Hi, I'm Allison Plyer, Senior Consultant with the Community Data Center. We work with nonprofit clients to use data to support their grantwriting, planning and advocacy efforts.

We know that using data can be frustrating at times. We're here to help!

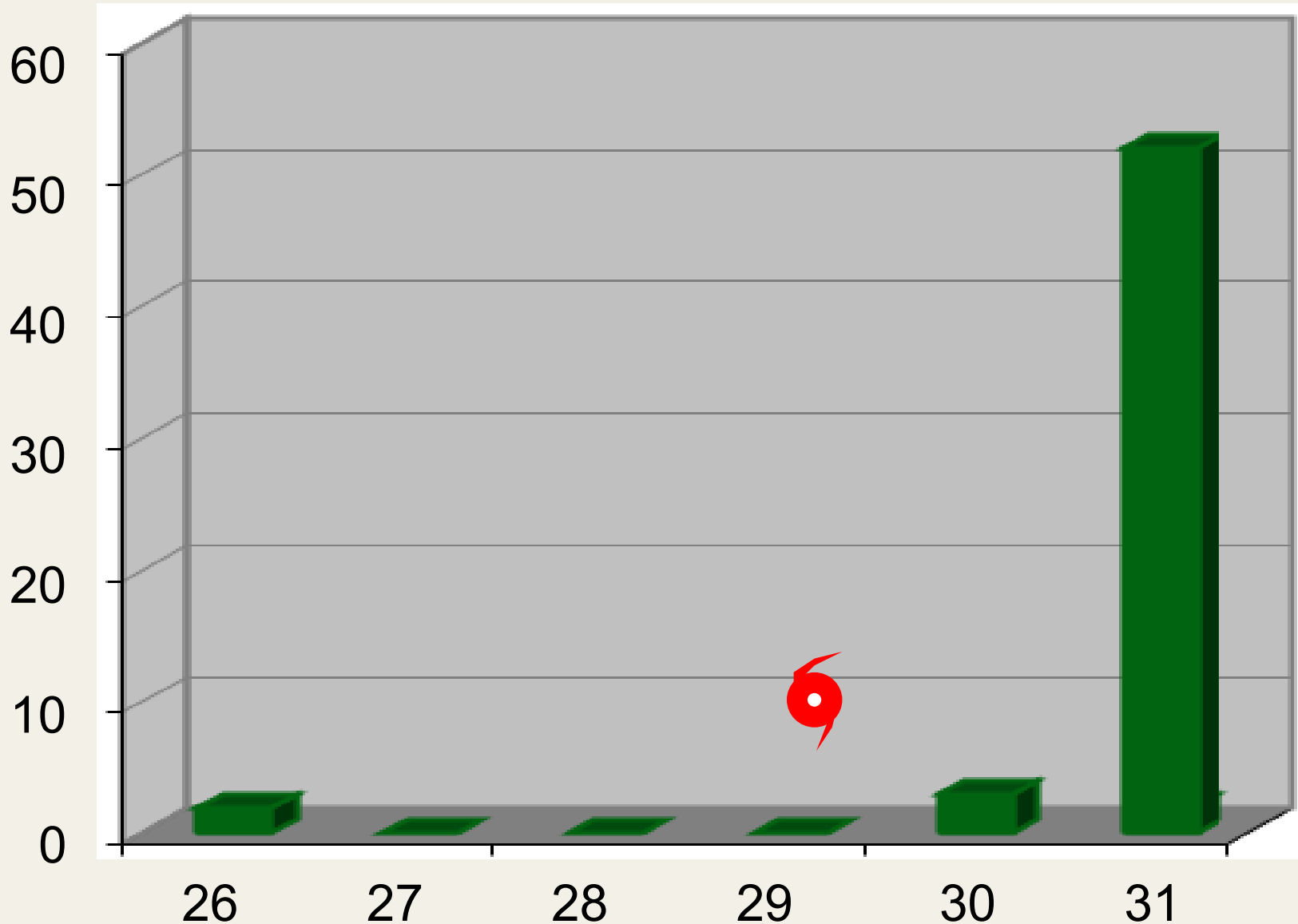
We've tried to create a web site that makes getting local data really easy. But there's a whole world of data out there and we've published only a small portion. If after reviewing our website, you haven't found what you're looking for, this is the page to be on.

If you are a New Orleans area nonprofit organization, you can receive one hour of free help from us. (If it will take longer, we can work to negotiate something.)

Please start by submitting the following information. I'll contact you within one business day of receiving your request. Once you make a request, my colleagues and I will work to help you find the best data to meet your needs. This process can take up to two weeks.



# Questions to “Ask Allison”





# Questions coming in...

"I need elevation data on Jefferson Parish -  
we evacuated for Katrina!!!!!!!!!!!!!!!!!!!!!!

PLEASE HELP - I live in Metairie on  
Jeannette Dr."





"Was there flooding at 4601 Painters Street in the Gentilly area? My sister is there alone and did not evacuate. It is a 3 level home, but if you know of anything please, in God's name, please email us."



**Audiences**

Affected individuals

<div>Use cases</div> <div></div>			
Preparedness	Emergency	Recovery	Resilience planning
	Finding displaced family members		



**Q. High priority data for recovery?**





"Can you give me data on number of residents in each parish so we can plan our case management service provision."

-Louisiana Recovery Corps

"We'd like to know population trends on the West Bank of Jefferson Parish. We'd like to bring a particular major national client into the West Bank market by showing that population has boomed on the West Bank post Katrina."

-Kirschman Realty, LLC

"I would like any valid data you have on the post-Katrina population of Orleans Parish by neighborhood."

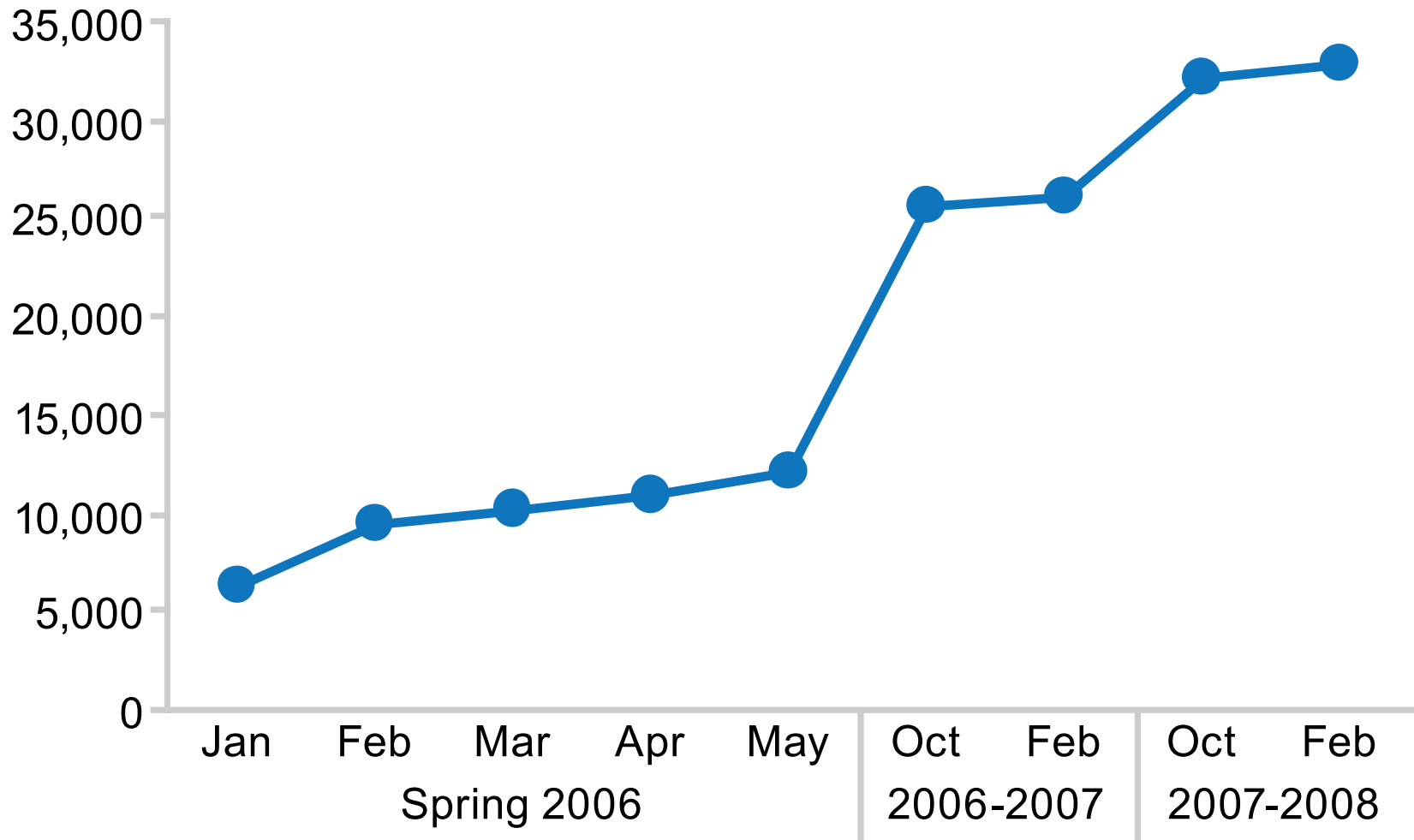
- International Medical Corps

"We need daytime population figures for New Orleans to make informed decisions about the future of television measurement in the market."

- Nielsen Media Research



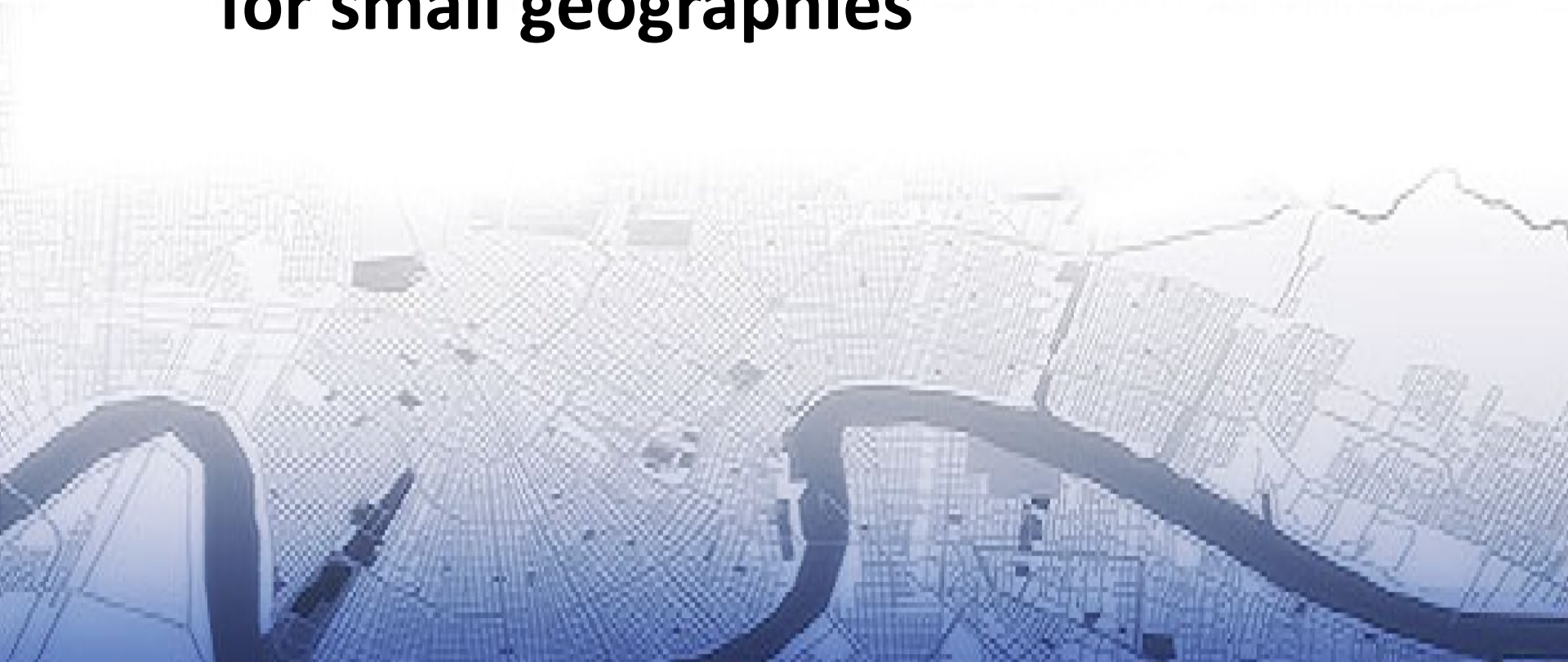
# Public School Enrollment (New Orleans)





# **Q. High priority data for recovery?**

- **Population data at frequent intervals for small geographies**





# Annual Census Population Estimates Lag 9 Months

## 2007

January						
S	M	T	W	T	F	S
1	2	3	4	5	6	7
8	9	10	11	12	13	14
15	16	17	18	19	20	21
22	23	24	25	26	27	28
29	30	31				

February						
S	M	T	W	T	F	S
			1	2	3	4
5	6	7	8	9	10	11
12	13	14	15	16	17	18
19	20	21	22	23	24	25
26	27	28	29	30		

March						
S	M	T	W	T	F	S
					1	2
3	4	5	6	7	8	9
10	11	12	13	14	15	16
17	18	19	20	21	22	23
24	25	26	27	28	29	30

April						
S	M	T	W	T	F	S
1	2	3	4	5	6	7
8	9	10	11	12	13	14
15	16	17	18	19	20	21
22	23	24	25	26	27	28
29	30	31				

May						
S	M	T	W	T	F	S
			1	2	3	4
5	6	7	8	9	10	11
12	13	14	15	16	17	18
19	20	21	22	23	24	25
26	27	28	29	30		

June						
S	M	T	W	T	F	S
					1	2
3	4	5	6	7	8	9
10	11	12	13	14	15	16
17	18	19	20	21	22	23
24	25	26	27	28	29	30

July						
S	M	T	W	T	F	S
1	2	3	4	5	6	7
8	9	10	11	12	13	14
15	16	17	18	19	20	21
22	23	24	25	26	27	28
29	30	31				

August						
S	M	T	W	T	F	S
			1	2	3	4
5	6	7	8	9	10	11
12	13	14	15	16	17	18
19	20	21	22	23	24	25
26	27	28	29	30		

September						
S	M	T	W	T	F	S
					1	2
3	4	5	6	7	8	9
10	11	12	13	14	15	16
17	18	19	20	21	22	23
24	25	26	27	28	29	30

October						
S	M	T	W	T	F	S
1	2	3	4	5	6	7
8	9	10	11	12	13	14
15	16	17	18	19	20	21
22	23	24	25	26	27	28
29	30	31				

November						
S	M	T	W	T	F	S
			1	2	3	4
5	6	7	8	9	10	11
12	13	14	15	16	17	18
19	20	21	22	23	24	25
26	27	28	29	30		

December						
S	M	T	W	T	F	S
					1	2
3	4	5	6	7	8	9
10	11	12	13	14	15	16
17	18	19	20	21	22	23
24	25	26	27	28	29	30

## 2008

January						
S	M	T	W	T	F	S
1	2	3	4	5	6	7
8	9	10	11	12	13	14
15	16	17	18	19	20	21
22	23	24	25	26	27	28
29	30	31				

February						
S	M	T	W	T	F	S
			1	2	3	4
5	6	7	8	9	10	11
12	13	14	15	16	17	18
19	20	21	22	23	24	25
26	27	28	29	30		

March						
S	M	T	W	T	F	S
					1	2
3	4	5	6	7	8	9
10	11	12	13	14	15	16
17	18	19	20	21	22	23
24	25	26	27	28	29	30

April						
S	M	T	W	T	F	S
1	2	3	4	5	6	7
8	9	10	11	12	13	14
15	16	17	18	19	20	21
22	23	24	25	26	27	28
29	30	31				

May						
S	M	T	W	T	F	S
			1	2	3	4
5	6	7	8	9	10	11
12	13	14	15	16	17	18
19	20	21	22	23	24	25
26	27	28	29	30		

June						
S	M	T	W	T	F	S
					1	2
3	4	5	6	7	8	9
10	11	12	13	14	15	16
17	18	19	20	21	22	23
24	25	26	27	28	29	30

July						
S	M	T	W	T	F	S
1	2	3	4	5	6	7
8	9	10	11	12	13	14
15	16	17	18	19	20	21
22	23	24	25	26	27	28
29	30	31				

August						
S	M	T	W	T	F	S
			1	2	3	4
5	6	7	8	9	10	11
12	13	14	15	16	17	18
19	20	21	22	23	24	25
26	27	28	29	30		

September						
S	M	T	W	T	F	S
					1	2
3	4	5	6	7	8	9
10	11	12	13	14	15	16
17	18	19	20	21	22	23
24	25	26	27	28	29	30

October						
S	M	T	W	T	F	S
1	2	3	4	5	6	7
8	9	10	11	12	13	14
15	16	17	18	19	20	21
22	23	24	25	26	27	28
29	30	31				

November						
S	M	T	W	T	F	S
			1	2	3	4
5	6	7	8	9	10	11
12	13	14	15	16	17	18
19	20	21	22	23	24	25
26	27	28	29	30		

December						
S	M	T	W	T	F	S
					1	2
3	4	5	6	7	8	9
10	11	12	13	14	15	16
17	18	19	20	21	22	23
24	25	26	27	28	29	30



# Alternative sources of population data

Utility  
accounts

Surveys

Public school  
enrollment

Postal data

Drivers Licenses

Traffic  
Volume

Voter  
Registration

Vehicle  
Registration



# Alternative sources of population data

Utility  
accounts

Surveys

Public school  
enrollment

Postal data

Drivers licenses

Traffic  
Volume

Vote  
Registration

Vehicle  
Registration



# Alternative sources of population data

Utility  
accounts

Surveys

Public school  
enrollment

Postal data

Drivers licenses

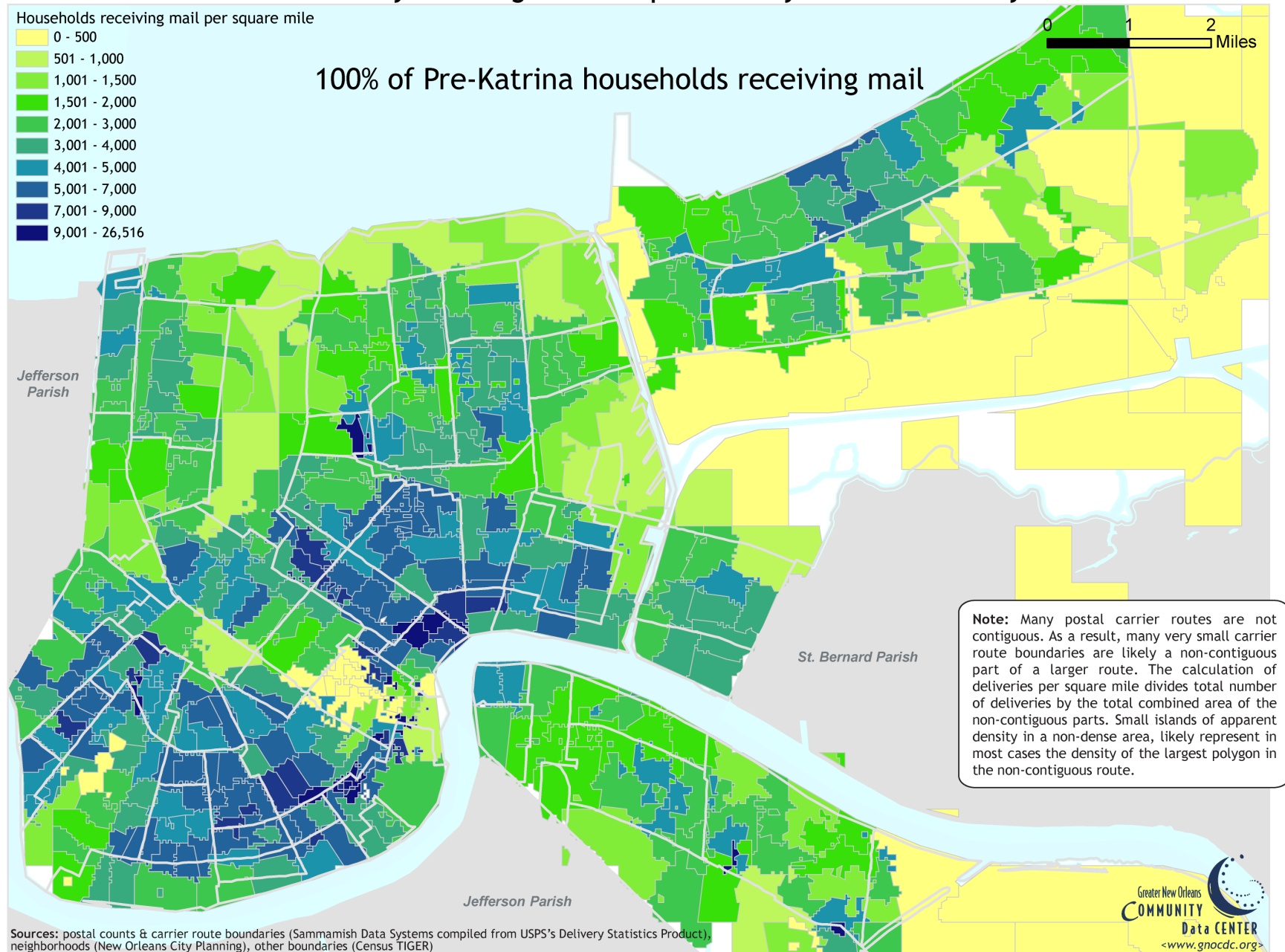
Traffic  
Volume

Voter  
Registration

Vehicle  
Registration

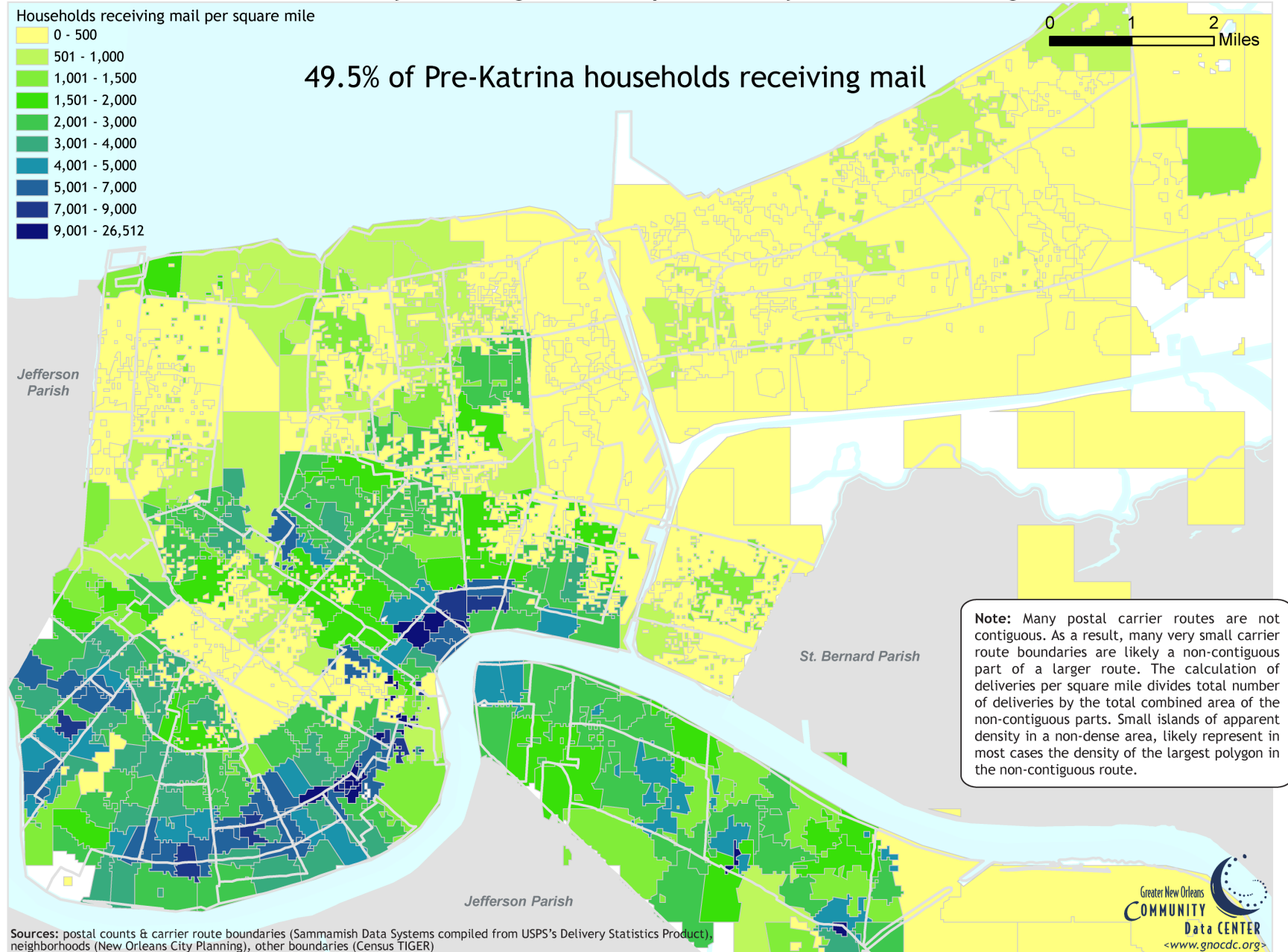


# Orleans Parish Households Actively Receiving Mail Per Square Mile by Carrier Route: July 2005



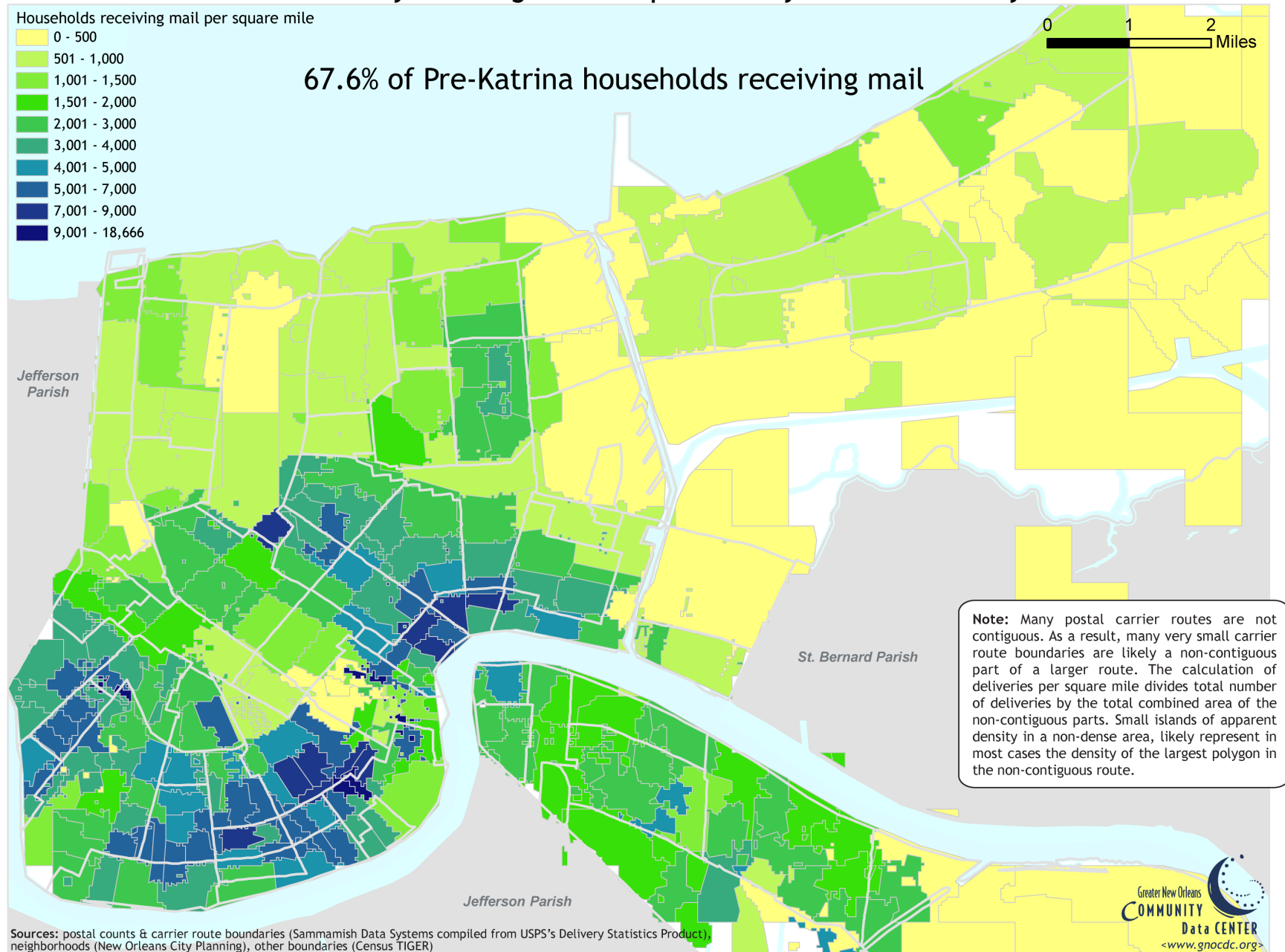


# Orleans Parish Households Actively Receiving Mail Per Square Mile by Carrier Route: August 2006



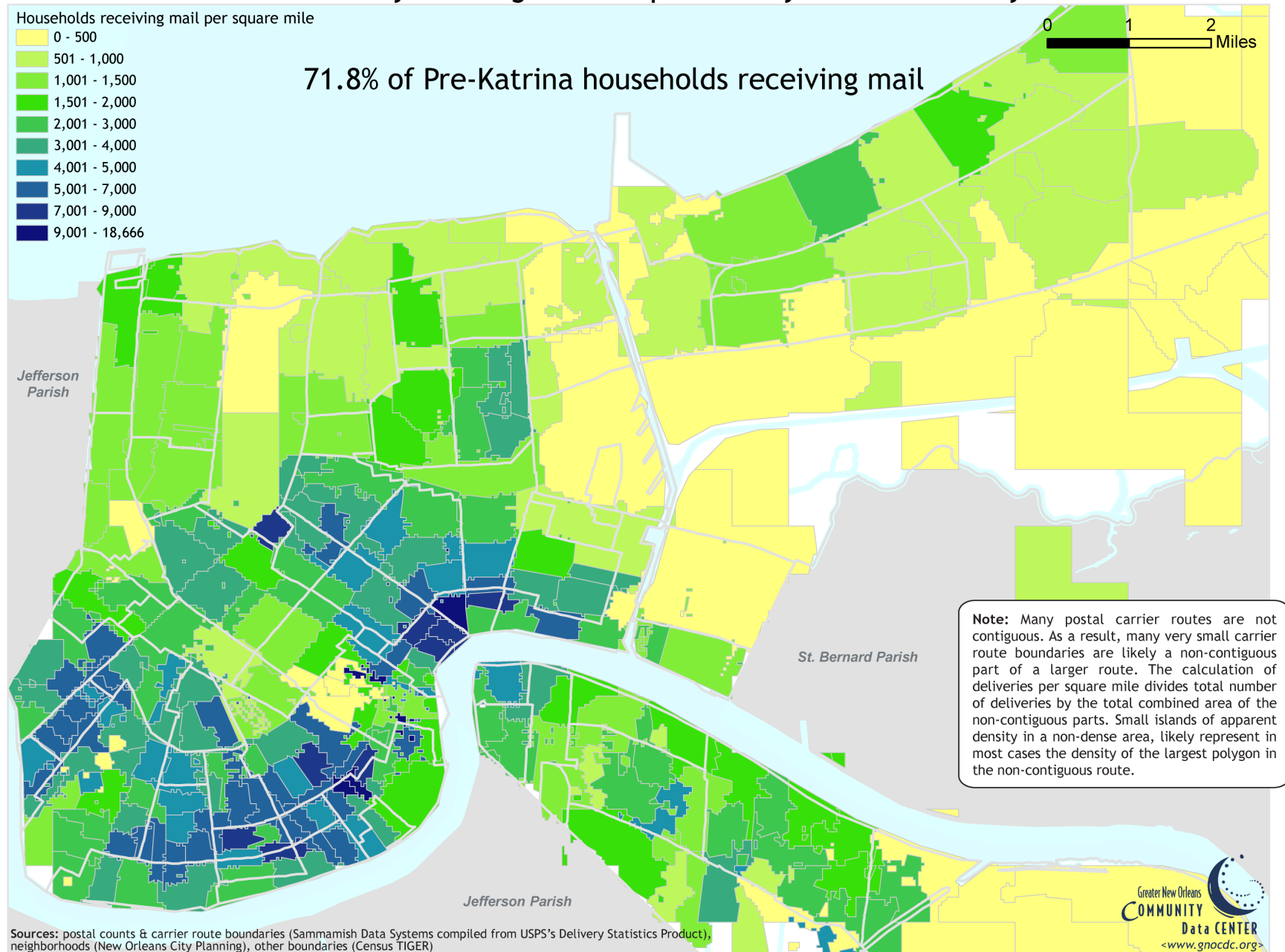


## Orleans Parish Households Actively Receiving Mail Per Square Mile by Carrier Route: July 2007





## Orleans Parish Households Actively Receiving Mail Per Square Mile by Carrier Route: July 2008





# **Q. High priority data for recovery?**

- **Population data at frequent intervals for small geographies**
- **Parcel-specific data**





# Parcel-specific data





# **Q. High priority data for recovery?**

- **Population data at frequent intervals for small geographies**
- **Parcel-specific data**
- **Information about re-opened facilities**





# Open Public Schools in Orleans Parish for Fall 2006 (as of August 21, 2006)

## School management types (53 total schools)

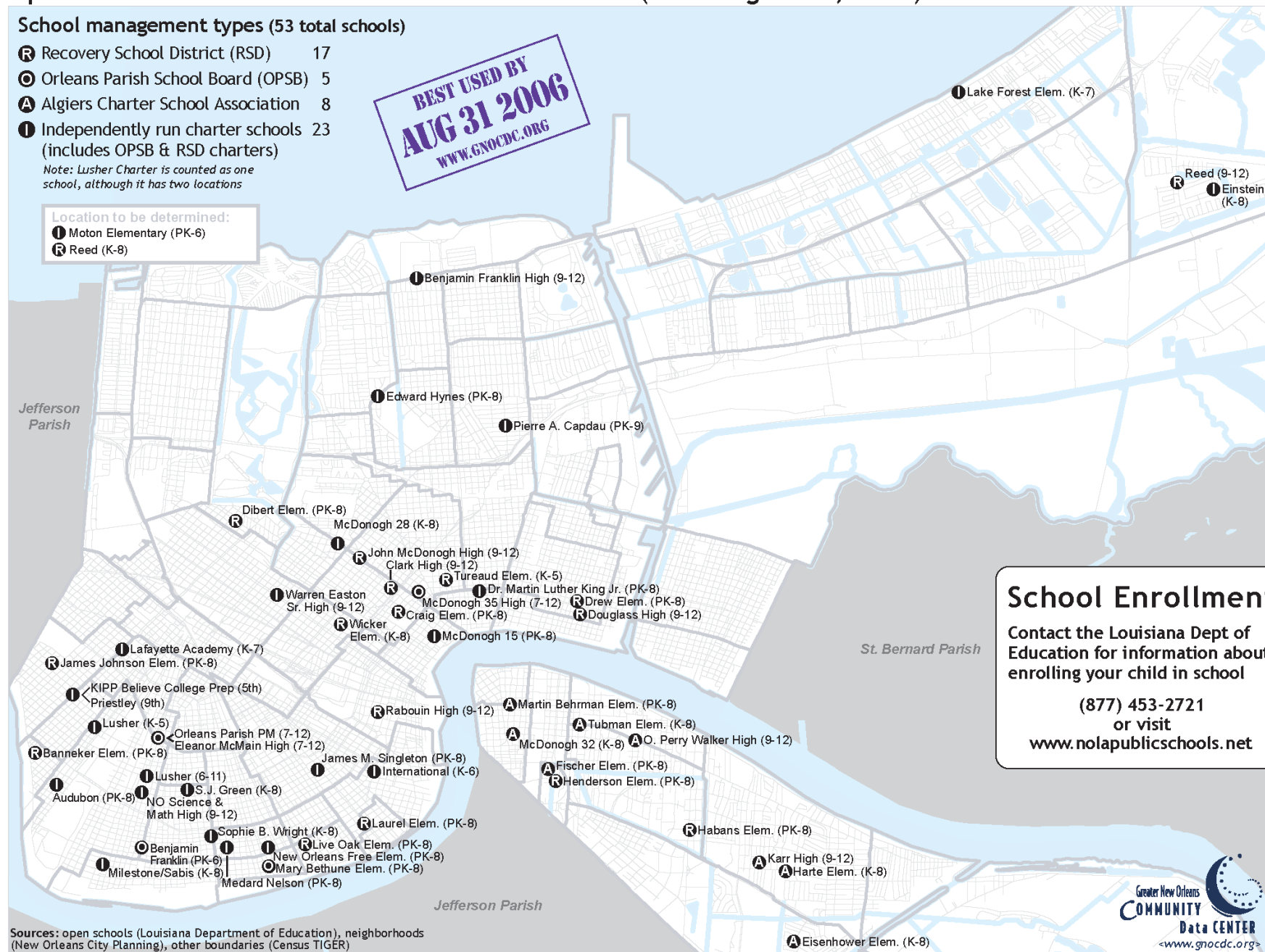
- R** Recovery School District (RSD) 17
- O** Orleans Parish School Board (OPSB) 5
- A** Algiers Charter School Association 8
- I** Independently run charter schools 23  
(includes OPSB & RSD charters)

*Note: Lusher Charter is counted as one school, although it has two locations*

### Location to be determined:

- I** Moton Elementary (PK-6)
- R** Reed (K-8)

**BEST USED BY  
AUG 31 2006  
WWW.GNOCDC.ORG**



## School Enrollment

Contact the Louisiana Dept of Education for information about enrolling your child in school

(877) 453-2721

or visit

[www.nolapublicschools.net](http://www.nolapublicschools.net)

Sources: open schools (Louisiana Department of Education), neighborhoods (New Orleans City Planning), other boundaries (Census TIGER)



# Open Public Schools in Orleans Parish for Fall 2006 (as of August 21, 2006)

## School management types (53 total schools)

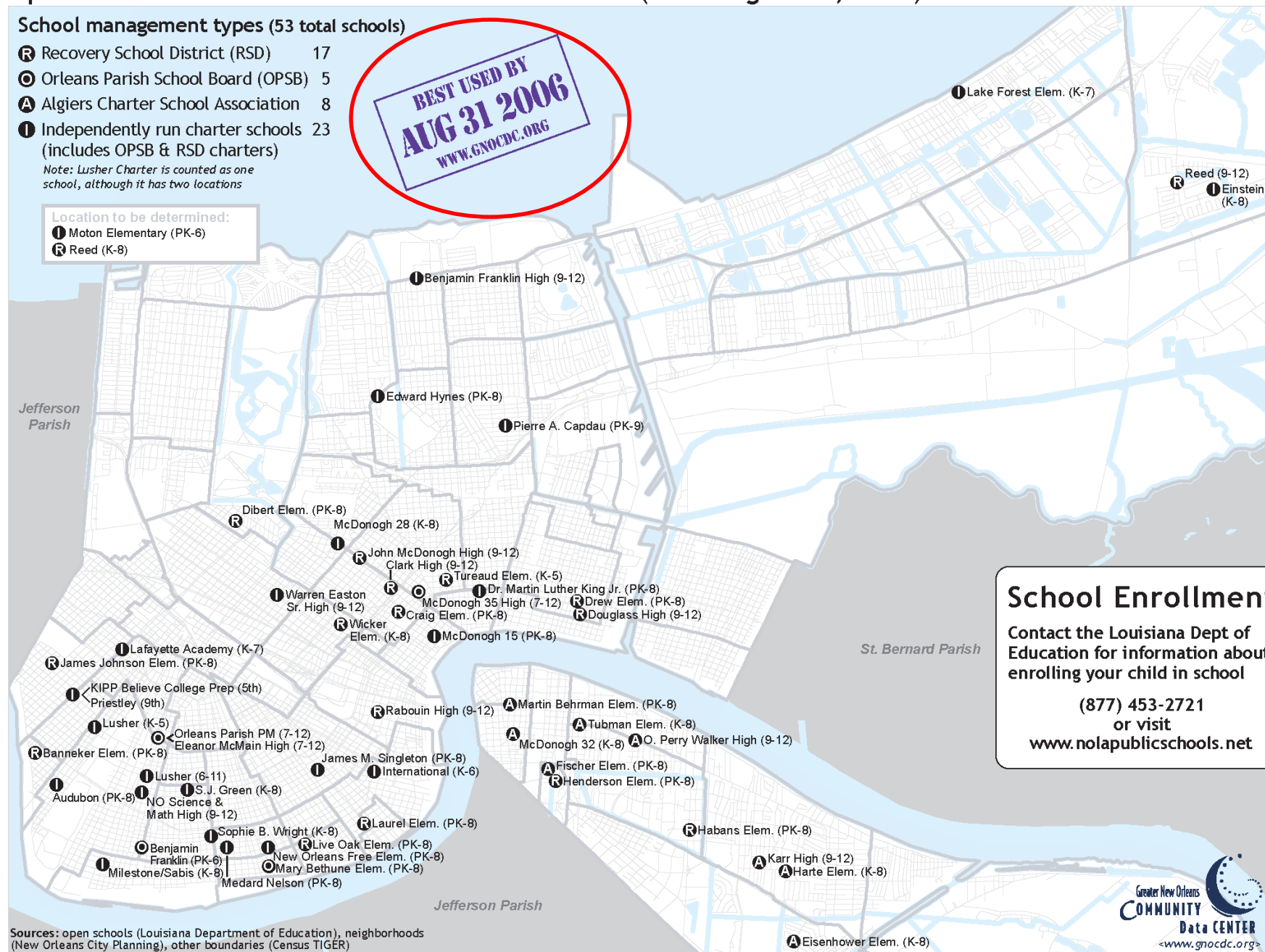
- R** Recovery School District (RSD) 17
- O** Orleans Parish School Board (OPSB) 5
- A** Algiers Charter School Association 8
- I** Independently run charter schools 23  
(includes OPSB & RSD charters)

*Note: Lusher Charter is counted as one school, although it has two locations*

### Location to be determined:

- I** Moton Elementary (PK-6)
- R** Reed (K-8)

**BEST USED BY  
AUG 31 2006  
WWW.GNOCDC.ORG**



## School Enrollment

Contact the Louisiana Dept of Education for information about enrolling your child in school

(877) 453-2721

or visit

[www.nolapublicschools.net](http://www.nolapublicschools.net)

Sources: open schools (Louisiana Department of Education), neighborhoods (New Orleans City Planning), other boundaries (Census TIGER)



Audience: Affected individuals

Use case: Migration decision

- Is power restored to my neighborhood?
- Which neighbors are returning?
- What schools/hospitals/childcare/businesses are open?
- Has crime increased?
- Is the air/soil/water safe?



Use cases



Audiences

Affected individuals

Preparedness	Emergency	Recovery	Resilience planning
		Migration decisions	




# **Q. High priority data for recovery?**

- **Trends to understand context ...  
as it changes**







# THE NEW ORLEANS INDEX

## 20TH ANNIVERSARY SPECIAL EDITION

### A Review of Key Indicators of Recovery Two Years After Katrina

By Amy Liu & Albert Hays

#### SUMMARY OF FINDINGS

A review of dozens of indicators of social and economic health as well as public services and infrastructure for the New Orleans region since Hurricane Katrina finds that:

- **The population of New Orleans and the region continues to rebound, but demographic shifts may be occurring, with fewer black residents in the city and larger numbers of Hispanic children in the swelling population.** U.S. postal agencies on business indicate more people than expected are returning to the city and larger population numbers up from '90 percent last year. But only 40 percent of students have returned to New Orleans public schools, and of those, a smaller share of black students.
- **The region's housing market has stabilized in the past year, especially in the least-damaged suburban parishes.** The homebuilding boom that took place in the region the first year after Katrina has slowed and home prices and new leads remain high overall but prices have leveled off. The exception is in Orleans and St. Bernard parishes, where home sale prices have dropped. Meanwhile, a considerable high number of properties are for sale in the region, many of which may be in need of repair and are quickly sold.
- **Two years after Katrina, the New Orleans regional economy is strong but has plateaued somewhat in the past year.** Many aspects of the regional economy—sales tax of pre-Katrina levels, job gains, and labor force—now have been restored to at least 79 percent of pre-Katrina levels. In the core, the city enjoyed some growth in sales tax revenue and lost no low employees, showing little growth in the labor force size over the past year. And, the region's unemployment rate is a higher than one year ago.
- **Housing repairs and construction**

...but year, but repairs to property are still limited. The pace is slow, but repairs to property are still limited.

**B** Metropolitan Policy Program  
at MITROCEN

**THE NEW ORLEANS INDEX**  
TRACKING THE RECOVERY OF NEW ORLEANS & THE METRO AREA



**August 2009**

<sup>10</sup> Though New Orleans has been somewhat shielded from the recession due to substantial rebuilding activity, few parts other than the region will face major challenges due to blight, unaffordable housing, and vulnerable flood protection. New federal leadership must commit and commit its partnership with state and local leaders by delivering on key solutions in innovation, infrastructure, human capital, and sustainable communities to help generate New Orleans' return post "disaster recovery" and build a more prosperous future.<sup>11</sup>

New edition August 2010 • For the latest data, visit [www.grocity.org](http://www.grocity.org)  
For additional inquiries, please direct media inquiries to [www.grocity.org/media/](mailto:www.grocity.org/media/)



# Inside the NEW ORLEANS INDEX

- Population
- Housing
- Economy
- Infrastructure

## THE NEW ORLEANS INDEX

SECOND ANNIVERSARY SPECIAL EDITION

### APPENDIX B: DATA TABLES

#### SOCIAL, ECONOMIC, AND FISCAL HEALTH OF THE CITY AND REGION

##### Population

Table 1: Total Population Estimates .....	3
Table 2: Non-Group Quarters Population Estimates .....	3
Table 3: Proportion of Households Actively Receiving Mail, by Parish .....	3
Table 4: Public School Enrollment Totals in New Orleans MSA, by Parish .....	4
Table 5: Private School Enrollment Totals in New Orleans MSA, by Parish .....	4
Table 6: College Students Enrolled in New Orleans, by University .....	4

##### Household Well-Being

Table 7: Number of Unemployment Claims .....	5
Table 8: Quarterly Personal Income in Louisiana & the U.S. ....	6

##### Housing

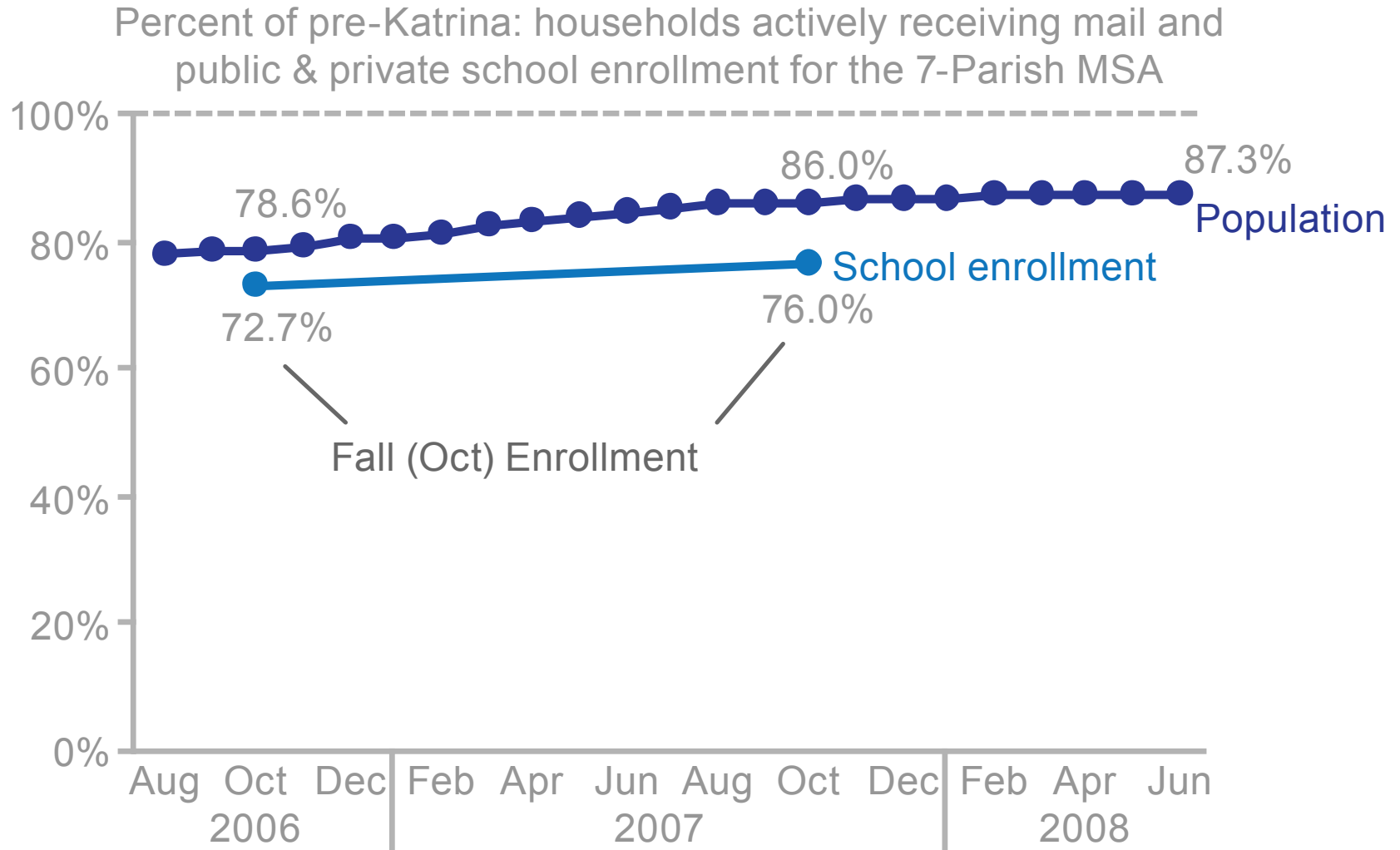
Table 9: Average Sale Price of Single Family Homes in New Orleans Metro Area .....	7
Table 10: Number of Single Family Home Sales in New Orleans Metro Area .....	8
Table 11: Number of Residential Properties for Sale in New Orleans MSA, by Parish .....	9
Table 12: Fair Market Rents in New Orleans MSA, by Unit Bedrooms .....	9
Table 13: Delinquency and Foreclosure Rates for Subprime, Prime and All Loans in Louisiana & the U.S. ....	9

##### Economy

Table 14: City of New Orleans Sales Tax Collections, by Source .....	10
Table 15: Labor Force Size .....	11
Table 16: Unemployment Rates & Total Numbers .....	11
Table 17a: Number of Non-farm Employed by Source and Type of Employment .....	12
Table 17b: Number of Non-farm Employed in Service-Providing Industries: A-L .....	13
Table 17c: Number of Non-farm Employed in Service-Providing Industries: M-Z .....	14
Table 17d: Number of Non-farm Employed in Goods-Producing Industries .....	15
Table 17e: Number of Non-farm Employed in Government in New Orleans MSA, Louisiana, & the U.S., by Level of Government .....	16
Table 17f: Number of Non-farm Employed in Government .....	17
Table 18: Average Weekly Wage, by Industry Sectors .....	18
Table 19: Net Change in Total Employers, by Parish .....	19
Table 20: Job Vacancy Rate in New Orleans Regional Labor Market Area, by Occupational Group .....	21
Table 21: Number of Passengers Arriving & Departing from Louis Armstrong New Orleans International Airport .....	22
Table 22: Number of Passengers Arriving & Departing from Louis Armstrong New Orleans International Airport .....	23



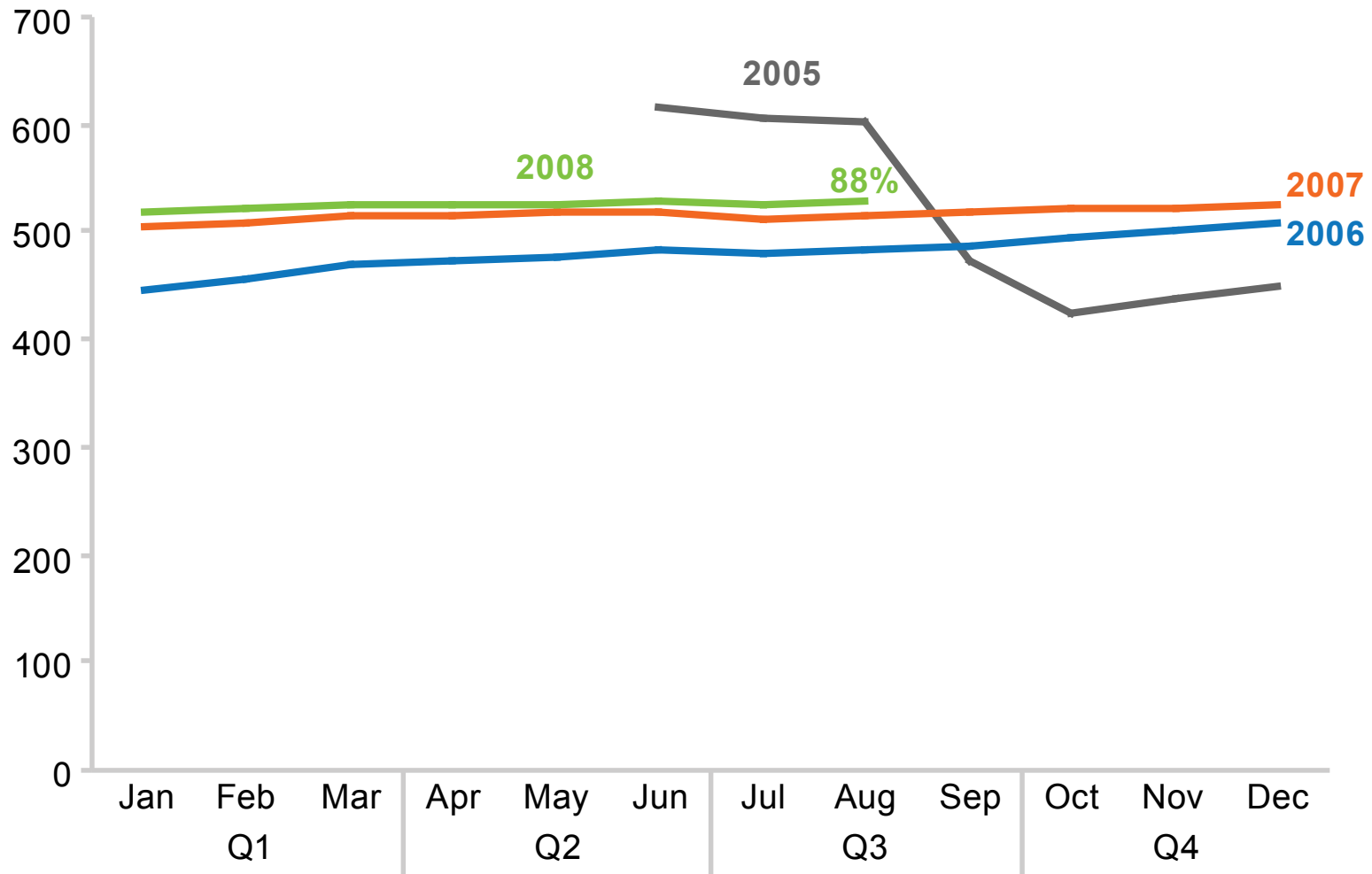
# Population and Public School Enrollment



Source: GNO Community Data Center analysis of USPS Delivery statistics acquired from Sammamish Data Systems, and Louisiana Department of Education.

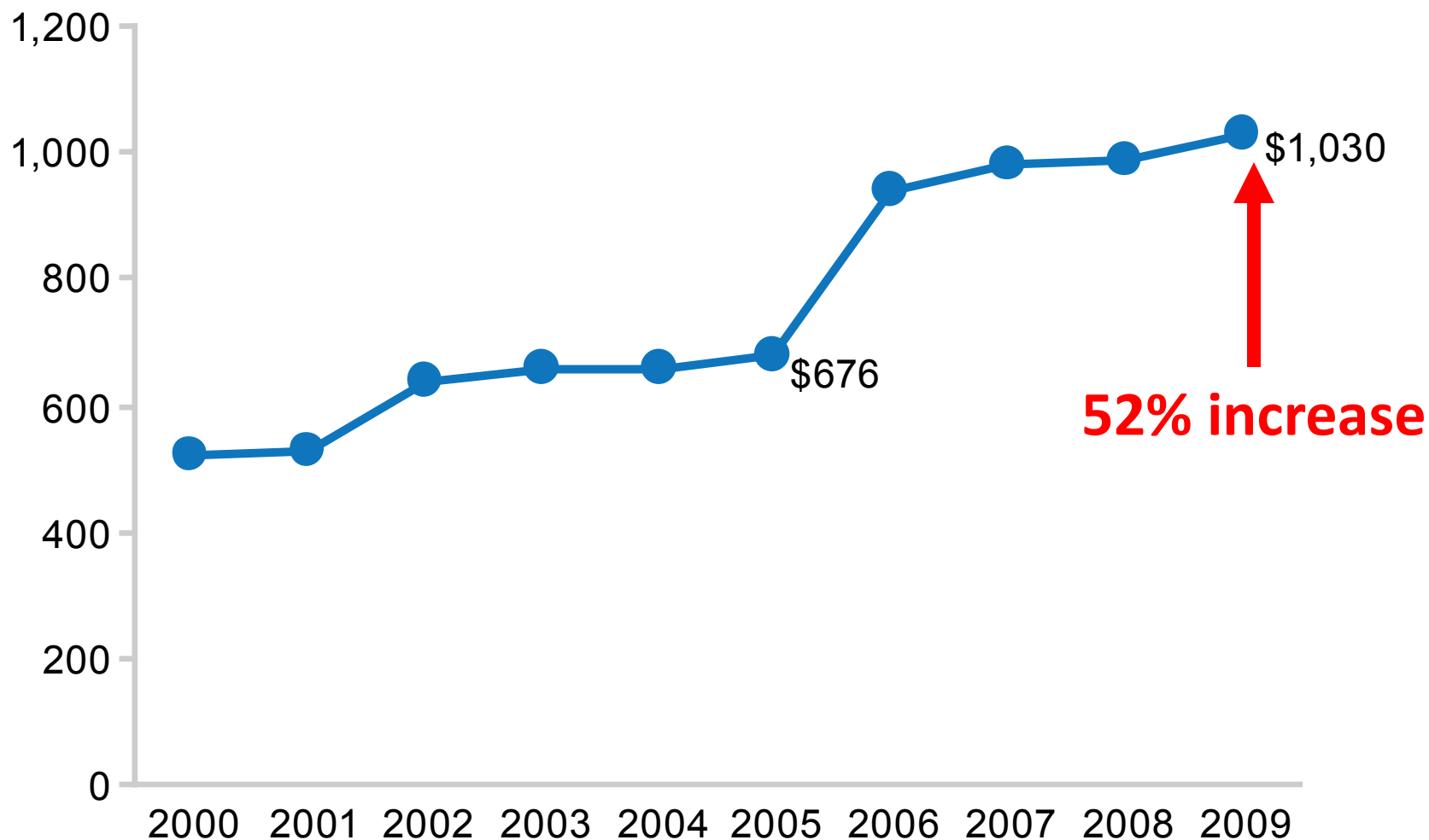


# Jobs (New Orleans Metro, in thousands, non-farm jobs)



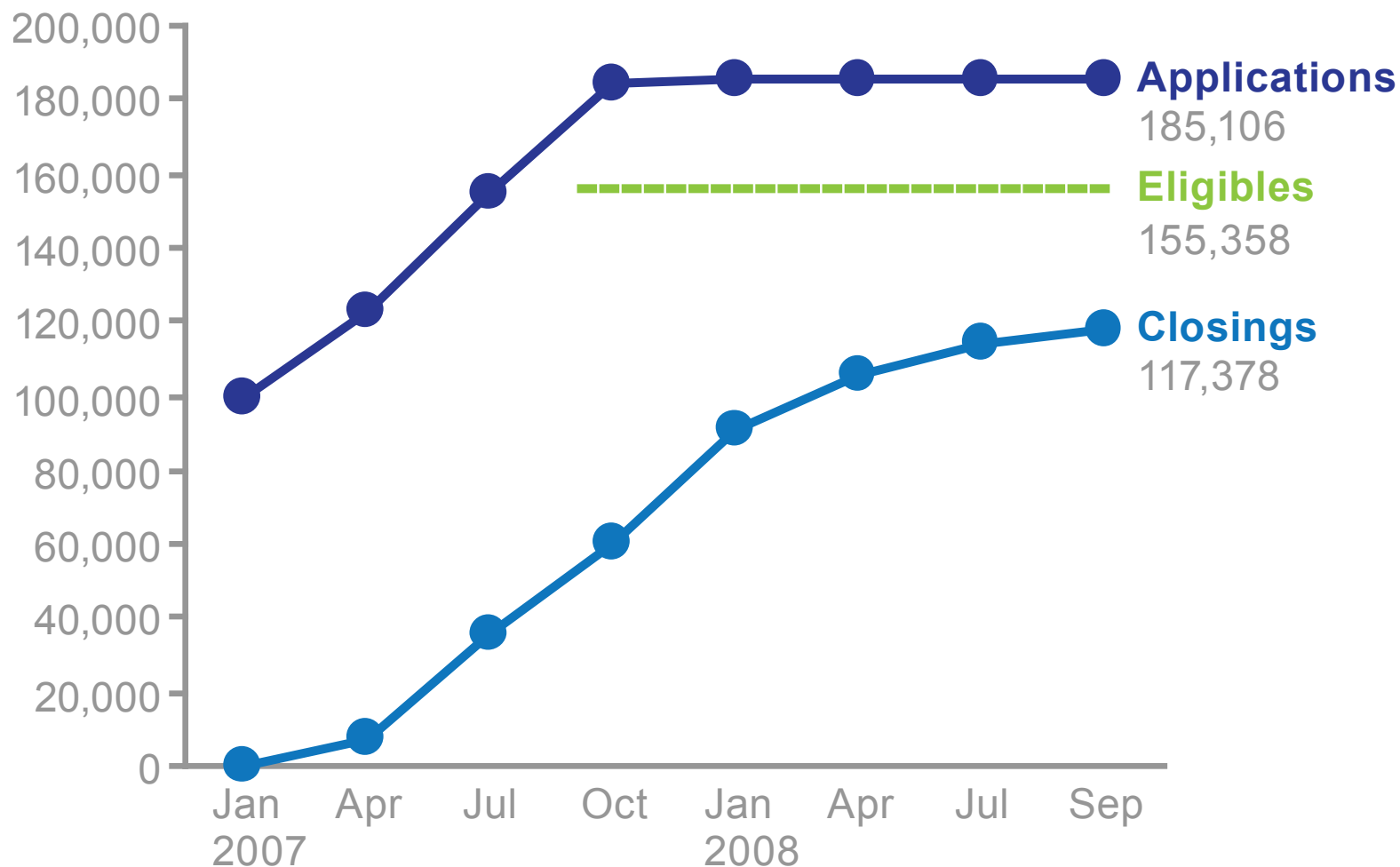


# Fair Market Rent for a 2-Bedroom (New Orleans Metro)





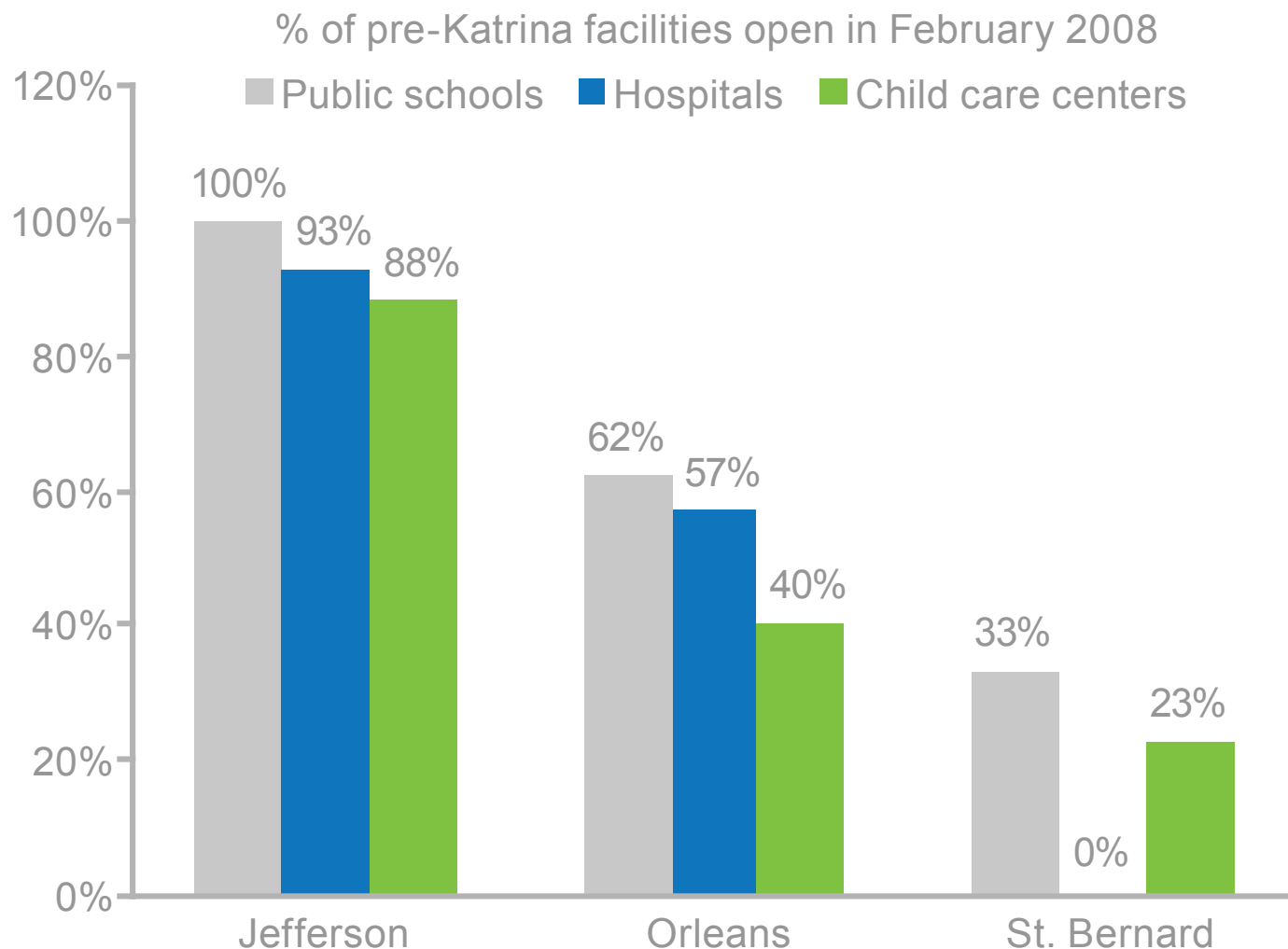
# Grants for LA Homeowners (CDBG "Road Home Program")



Source: The Road Home Program.



# Open Schools, Hospitals, & Child Care Centers



Sources: Louisiana Department of Education, Louisiana Hospital Association, Agenda for Children, Louisiana Department of Social Services Bureau.



**B** | Metropolitan Policy Program  
at BROOKINGS

# THE NEW ORLEANS

— TRACKING THE RECOVERY OF NEW ORLEANS —

ANNIVERSARY EDITION  
THREE YEARS

*Recovery*


In the immediate months after Katrina, mortgage delinquency rates spiked as personal incomes dropped. Then within the first two years, homeowners with means and insurance were the first to renovate, followed by those who needed federal assistance. Repairs of rental units were slower, raising area rents and slowing the recovery of several industries dependent on lower-wage employees. Infrastructure rebuilding lagged most of all: Five months after the storm, the few open public schools had a waiting list of children trying to enroll. Even three years after Katrina, police stations still operated out of FEMA trailers and temporary buildings. And the levees protecting New Orleans were not completed until 6 years after the storm.



Audience: Policymakers, media, general public, business, philanthropy, affected individuals

Use case: Build common understanding of context ... as it changes

[Key domains: population, housing, economy, infrastructure]

- How much aid is needed?
  - How to prioritize spending?
- 
- What is the pace of distribution of recovery funding?
  - How is recovery progressing and where is it lagging?
  - What is the strength of the housing market?
  - What is the strength of the economy?
  - How to reprioritize spending?



Use cases



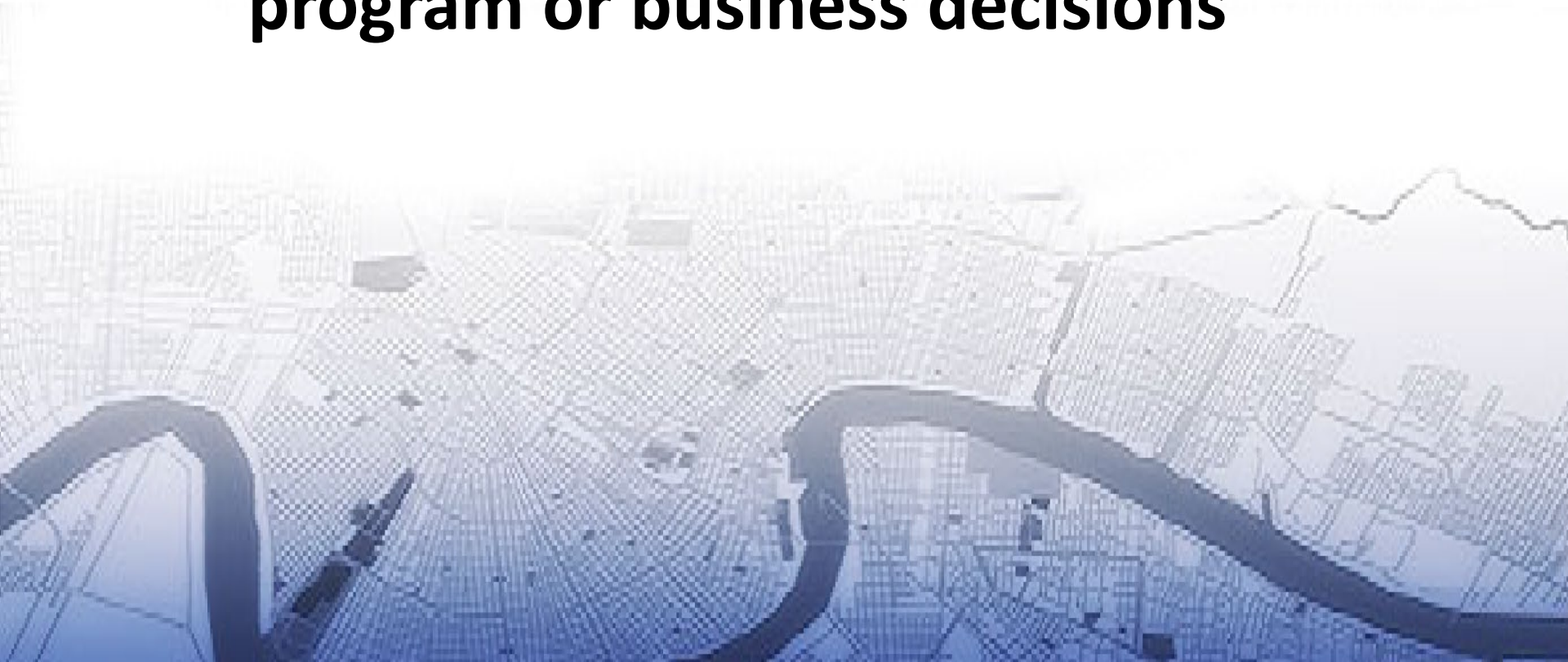
Audiences

	Preparedness	Emergency	Recovery	Resilience planning
Affected individuals			Migration decisions	
Policymakers, general public, media, business, philanthropy, affected individuals			Build common understanding of context ... as it changes	



# **Q. High priority data for recovery?**

- **Custom analyses to inform specific program or business decisions**





Audiences: Government agencies; nonprofits;  
business owners; institutions

Use case: Specific program or business decisions

- How many parcels have had repeated flood claims?
- Which households received less aid than they needed?
- How many customers will my store have?
- How many students will need on-campus housing?
- Etc.



## Use cases



### Audiences

	Preparedness	Emergency	Recovery	Resilience planning
Affected individuals			Migration decisions	
Policymakers, general public, media, business, philanthropy, affected individuals			Build common understanding of context ... as it changes	
Government agencies; nonprofits; business owners; institutions			Specific program or business decisions	



## Use cases



### Audiences

	Preparedness	Emergency	Recovery	Resilience planning
Affected individuals			Migration decisions	
Policymakers, general public, media, business, philanthropy, affected individuals			Build common understanding of context ... as it changes	
Government agencies; nonprofits; business owners; institutions			Specific program or business decisions	



## Use cases

### Audiences

	Preparedness	Emergency	Recovery	Resilience planning
Affected individuals			Migration decisions	
Policymakers, general public, media, business, philanthropy, affected individuals			Build common understanding of context ... as it changes	
Government agencies; nonprofits; business owners; institutions			Specific program or business decisions	

**3. Deliver data in formats most consumable for each specific audience/use case.**



"The most up-to-date, reliable data for New Orleans"

## Numbers Talk Newsletter

3,976 subscribers

E-mail Address

Sign Up! [privacy statement](#)

August 4, 2010

**The New Orleans Index at Five:  
Recovery to Transformation of a  
Major American City**

July 20, 2010

**Jobs and livelihoods are closely  
tied to Louisiana's coast**

July 1, 2010

**Neighborhood recovery rates,  
and count down to the  
anniversary**

## IN THE NEWS

**95 media mentions so far this  
year (\$26 in 2009)**

June 2, 2010

**Five Years Later, The Big Easy  
Pushes Forward**  
NPR

August 8, 2010

**Sunday Edition: New Orleans five  
years after Katrina**  
WWL-TV

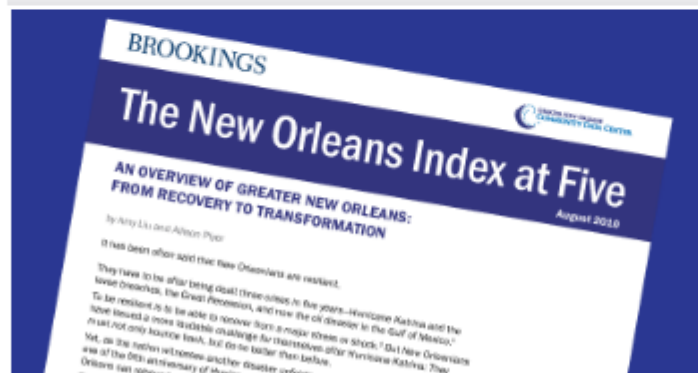
August 4, 2010

**Hurricane Katrina recovery  
assessed five years out**  
The Times-Picayune

August 4, 2010

**New Orleans Getting Stronger,  
but Katrina's Problems Linger 5  
Years Later**

## FEATURED



## The New Orleans Index at Five

August 2010 **New!**

*The New Orleans Index at Five* provides a comprehensive examination of the region through 20 key indicators, as well as seven topical essays informed by on the ground experience and research. An overview identifies remaining challenges and the efforts needed to ensure the continued transformation of New Orleans into a more prosperous region. [Read more...](#)

## ESSENTIAL DATA

### Regional "Export" Jobs



August 2010 **New!**

This brief, entitled *Jobs that Matter Most*, examines employment in the region and the "export" industries that drive economic growth.

### Coastal Employment



July 2010

This brief describes employment in coastal Louisiana two years prior to the 2010 Deepwater Horizon oil disaster. The jobs data within this brief serves as a baseline against which future



5TH ANNIVERSARY OF  
HURRICANE KATRINA

Days until August 29th: **8**

April 2009

### Facts for Features: Katrina Impact

A brief summary of the data on flooding, deaths, displaced residents, damages and recovery funding

June 2010

### Neighborhood Repopulation

Analysis of neighborhood repopulation data - includes a data table and maps.

August 2010

### The New Orleans Index at Five New!

The fifth anniversary edition with an overview, 20 key indicators, 7 essays on major reforms and more!



OIL DISASTER

July 20, 2010

### Coastal Employment before the 2010 Deepwater Horizon Oil Disaster

This brief describes employment in coastal Louisiana two years prior to the 2010 Deepwater Horizon oil disaster. The jobs data within this brief serves as a baseline against which future impacts of the oil disaster may be compared.

June 18, 2010

### The Economic Impact of the Oil Spill

In this Brookings Podcast, Amy Liu discusses the enormous economic impact of the catastrophic BP Deepwater Horizon oil spill on New Orleans, the Gulf Coast region, and the nation.

June 16, 2010

### Economic Impact of the Oil Spill on the Gulf Region

Amy Liu from Brookings answers questions about the economic impact of the oil spill on the New Orleans region in a live web chat moderated by Sung Hui Kim, assistant editor at POLITICO.





## 5 Years After Katrina

July 20, 2010  
**Jobs and livelihoods are closely tied to Louisiana's coast**

July 1, 2010  
**Neighborhood recovery rates, and count down to the anniversary**

**IN THE NEWS**  
**95 media mentions so far this year (526 in 2009)**

June 2, 2010  
**Five Years Later, The Big Easy Pushes Forward**  
NPR

August 8, 2010  
**Sunday Edition: New Orleans five years after Katrina**  
WWL-TV

August 4, 2010  
**Hurricane Katrina recovery assessed five years out**  
The Times-Picayune

August 4, 2010  
**New Orleans Getting Stronger, but Katrina's Problems Linger 5 Years Later**

## The New Orleans Index at Five

August 2010 **New!**

*The New Orleans Index at Five* provides a comprehensive examination of the region through 20 key indicators and seven topical essays informed by on-the-ground research. An overview identifies remaining challenges and efforts needed to ensure the continued transformation of New Orleans into a more prosperous region. [Read more](#)

## ESSENTIAL DATA

### Regional "Export" Jobs



August 2010 **New!**

This brief, entitled *Jobs and Livelihoods*, examines employment in the "export" industries that

### Coastal Employment



July 2010

This brief describes employment in the coastal region of Louisiana two years prior to the 2010 Deepwater Horizon oil disaster. The jobs data within this brief serves as a baseline against which future



5TH ANNIVERSARY OF  
HURRICANE KATRINA

Days until August 29th: **8**

April 2009

### Facts for Features: Katrina Impact

A brief summary of the data on flooding, deaths, displaced residents, damages and recovery funding

June 2010

### Neighborhood Repopulation

Analysis of neighborhood repopulation data - includes a data table and maps.

August 2010

### The New Orleans Index at Five New!

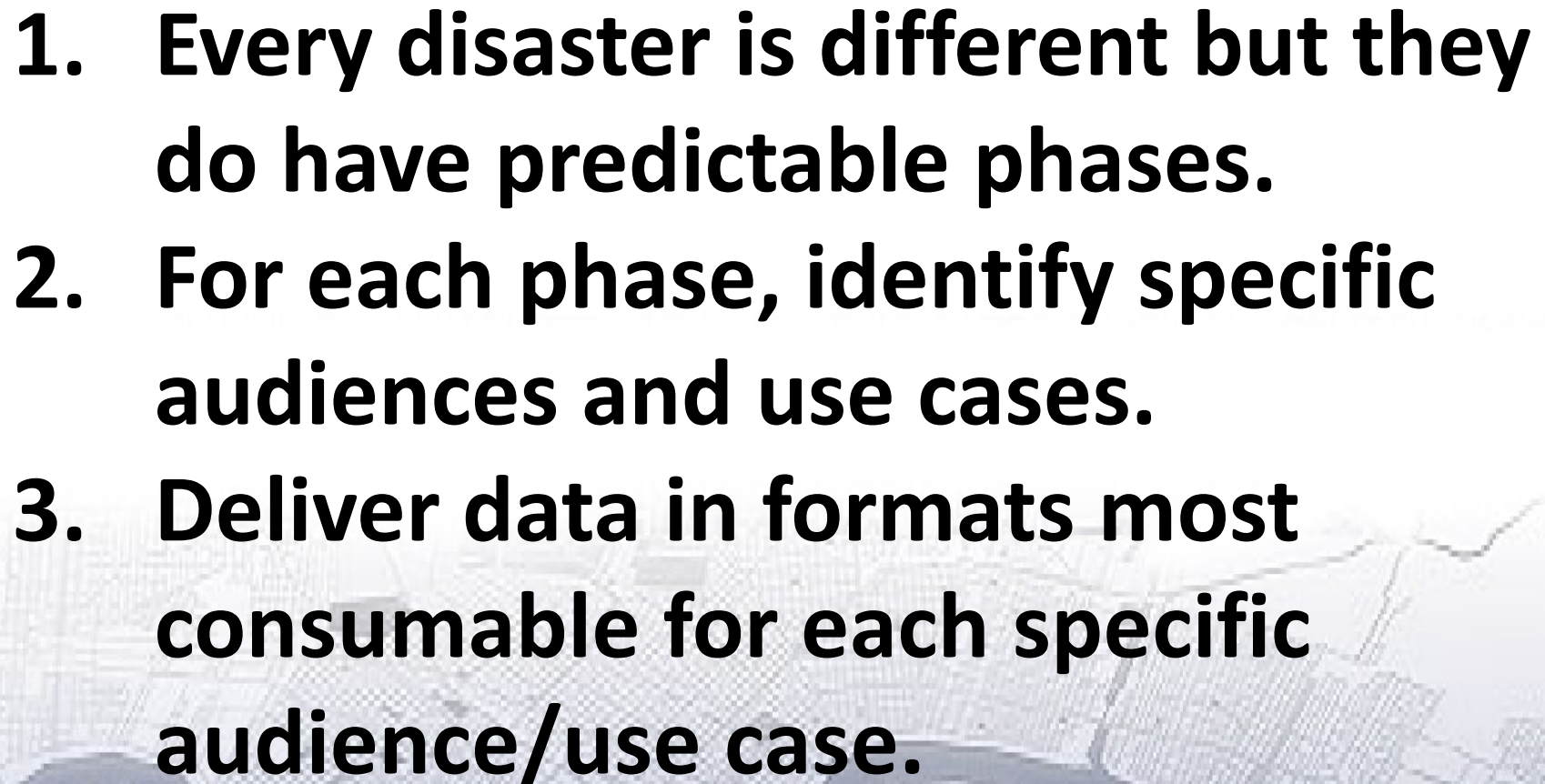
The fifth anniversary edition with an overview, 20 key indicators, 7 essays on major reforms and more!



the economic impact of the oil spill on the New Orleans region in a live web chat moderated by Susan Hin-Kin, assistant editor at POLITICO.



# **The lessons are...**

- 1. Every disaster is different but they do have predictable phases.**
  - 2. For each phase, identify specific audiences and use cases.**
  - 3. Deliver data in formats most consumable for each specific audience/use case.**
- 
- A faint, blue-tinted aerial photograph of a city with a winding river serves as the background for the lower half of the slide.