

Perspectives on Mistrust, Misinformation and Science

Mike Dimock

President, Pew Research Center

Pew Research Center



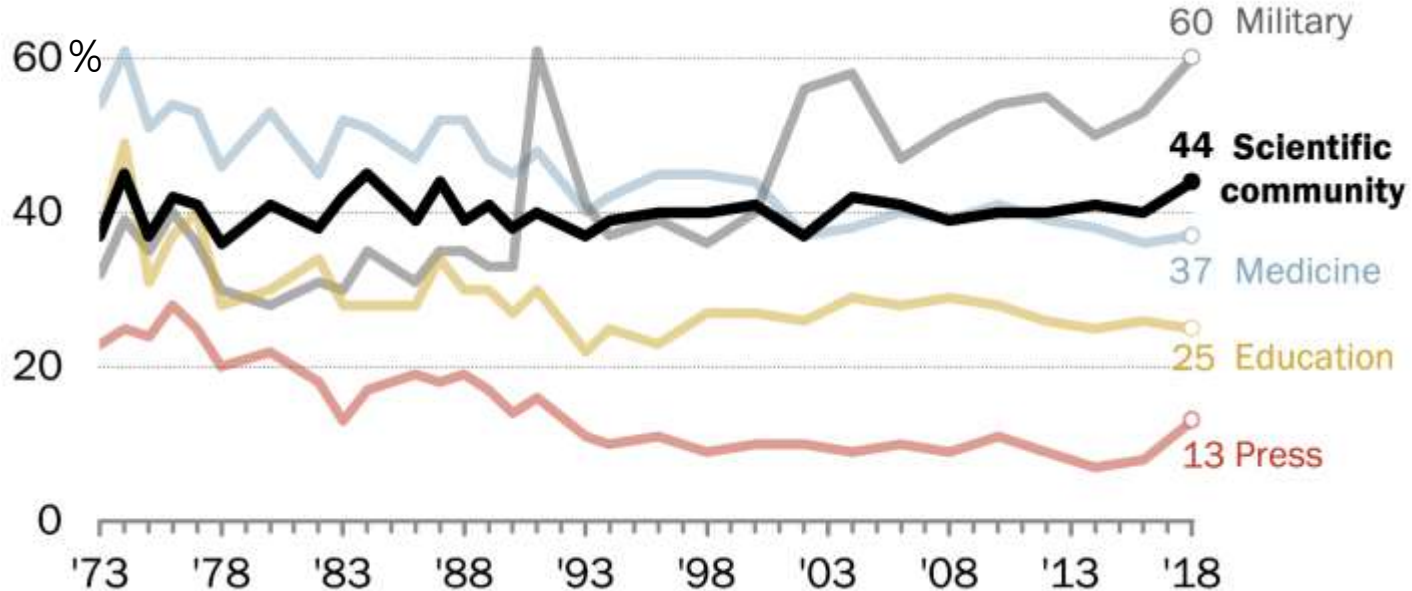
Mission: We generate a foundation of facts that enriches the public dialogue and supports sound decision-making.



Trust, Facts and Democracy

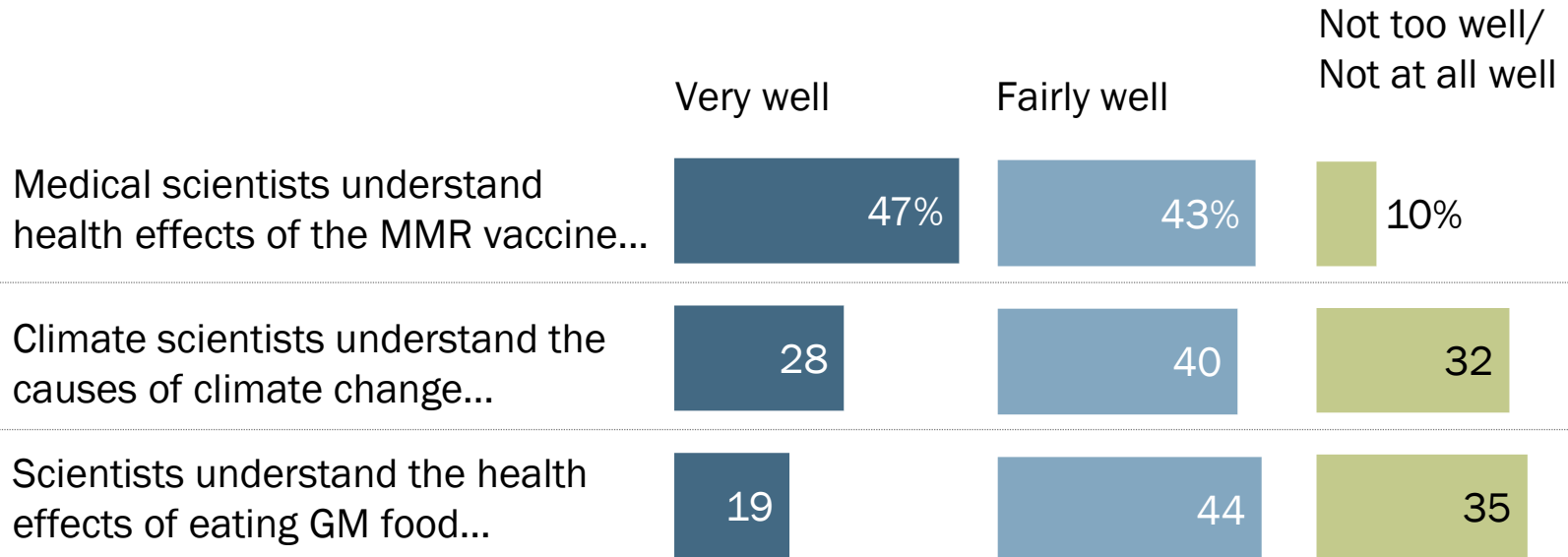
Steady “confidence” in scientific community

% of U.S. adults who say they have a great deal of confidence in the people running each of these institutions



Source: General Social Surveys, NORC

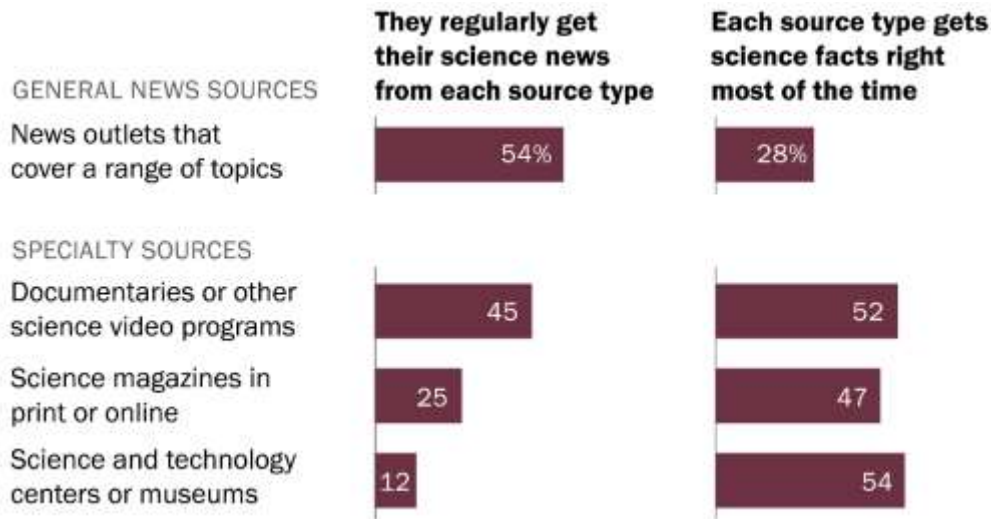
Public often underestimates scientific understanding or consensus



Pew Research Center survey of U.S. adults May 10-June 6, 2016

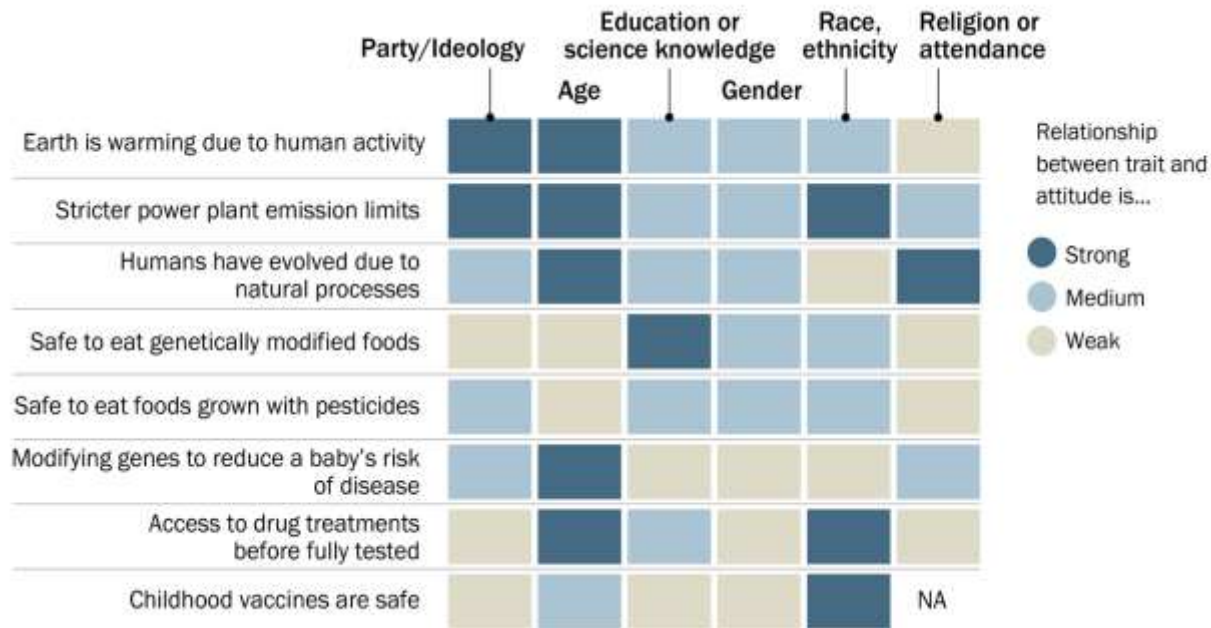
Mismatch between sources people trust and sources people use

% of U.S. adults who say ...



Note: "Most of the time" combines those who said "almost all" or "more than half" of the time. Respondents who gave other responses or who did not give an answer are not shown. Other source types rated are not shown. Source: Survey conducted May 30-June 12, 2017. "Science News and Information Today"

Wide mix of factors influencing public views on science-related issues



Note: Chart shows relative strength and statistical significance of each factor or set of factors. Pew Research Center surveys.