



DEPARTMENT OF DEFENSE FORENSIC CAPABILITIES



Larry C. Chelko
Director
U.S. Army Criminal Investigation Laboratory
(USACIL)



DOD's FORENSIC CHALLENGE

• Forensic requirements are growing
• New uses are emerging

Traditional:

- Criminal Investigations
- Casualty Identifications
- Medical Examiner Functions
- Network Intrusions
- Forensic Expert Testimony
- Repositories
- Research & Development
- Consulting Services

Emerging/Non-Traditional:

- Intelligence
- Counter-Intelligence
- Support to GWOT
- Expeditionary Forensics
- Foreign Language Forensic Documents Capability
- Site Exploitation
- Support to "significant" investigations
- Education/Training
- Contracting Forensics

Future:

- DOD/Fed Agency Integration
- DOD/Intl Agency Integration
- DOD/Natl Databasing
- Forensics/Biometrics Integration
- Support to WMD
- Technology Transfer
- Long-Term Evidence Storage
- Nation Building
- Accident Investigations
- Accident Reconstruction

• DOD forensic capabilities are stand-alone.
• There is no integrating or coordinating body.



DOD's FORENSIC SCIENCE COMMITTEE

- *Established by DODIG (CIPO)*
- *Review and resolution of forensic science issues*
- *Primarily focused on criminal investigation*
- *Committee has no regulatory or policy authority*



DOD's FORENSIC CAPABILITIES

(TRADITIONAL)

- The DOD possesses one of the most powerful forensics toolsets in the U.S.
 - Nuclear DNA
 - Drug Chemistry
 - Digital Evidence
 - Latent Prints
 - Forensic Pathology
 - Trace Evidence
 - Forensic Documents
 - Forensic Odontology
 - Forensic Toxicology
 - Others
 - Firearms & Toolmarks
 - Forensic Anthropology
 - Mito-DNA
 - Forensic Databases
- DOD's **enduring forensic capability** exists in the institutional forensic laboratories within DOD & forensic examiners comprise a **high-demand/low-density** skill set.
- DOD's institutional forensic laboratories were designed, equipped, and manned to provide a specific type of forensic support (**traditional missions**) to specific functional area (**normally criminal investigative, judicial or medical**).
- All of DOD's institutional forensic laboratories are **nationally accredited**.
- Additionally, there are **other agencies** that can provide unique capabilities to the forensic effort, e.g., NAVEODTECHDIV, TEDAC, BFC, NGIC, research labs, etc.



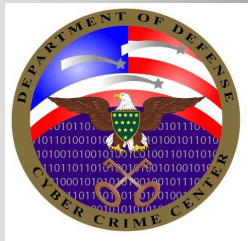
DOD's FORENSIC ORGANIZATIONS



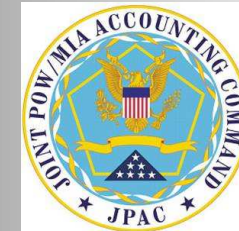
**U.S. Army
Criminal Investigation Laboratory
(USACIL: Army)
Larry C. Chelko
Tel (404) 469-7107
Larry.chelko@us.army.mil**



**Armed Forces
Institute of Pathology
(AFIP: Army)
LTC Louis N. Finelli
Tel (301) 319-0124
Finelli@afip.osd.mil**



**Department of Defense
Cyber Crime Center
(DC3: Air Force)
Lt Col Jeff Salyards
Tel (410) 981-1181
Jeff.salyards@dc3.mil**



**Joint POW/MIA Accounting Command
Central Identification Laboratory
(JPAC-CIL: PACOM)
Thomas D. Holland, Ph.D. D-ABFA
Tel (808) 448-1725
Thomas.Holland@jpac.pacom.mil**



DOD Cyber Crime Center

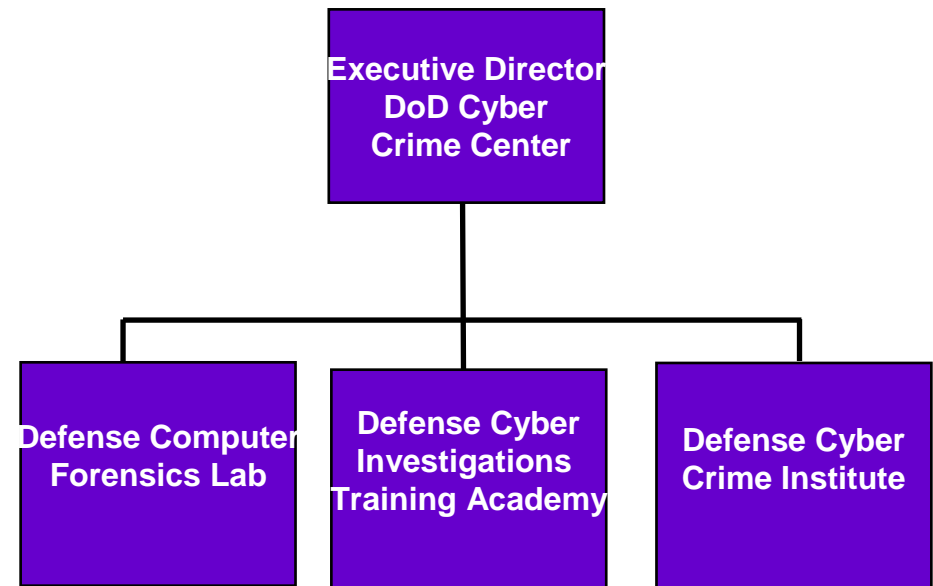
Mission:

- **Digital evidence processing and electronic media analysis for criminal law enforcement and DOD counterintelligence.**
- **Investigations and forensic training to DoD members to ensure info systems are secure from unauthorized use.**
- **Research, development, testing and evaluation (RDT&E).**

Size: ~20 Mil, ~35 Gov, ~138 Contractors

Location: **Lithicum, MD**

Affiliation: **Air Force**





Armed Forces Medical Examiner System

Mission:

- **Conduct forensic investigations to determine the cause & manner of death**
- **Perform forensic toxicology services (including drug testing quality control programs, proficiency testing programs, and consultation services to the DoD for the Military Drug Testing program)**
- **Perform psychological autopsies in cases of equivocal manner of death**
- **Perform other forensic services, including epidemiologic analysis of military deaths; and**
- **Provide consultation and support to other governmental agencies on a reimbursable basis.**

Size:

- **Forensic Pathologists (13)**
- **Photographers (6)**
- **Investigators (4)**
- **Forensic Anthropologists (2)**

Location: Rockville, MD & Dover AFB

Affiliation: Armed Force Institute of Pathology

EA: Surgeon General





Armed Forces DNA Identification Laboratory

Mission:

- ***Provides human remains identification;***
- ***Provides forensic DNA analytical services;***
- ***Provides bio-informatic analysis and management services;***
- ***Provides mass fatality specimen collection and management services;***
- ***Provides human reference specimen collection, cataloging, archival, and retrieval repository services.***
- ***Supports AFMES & AFIP through consultation, education and research.***
- ***Supports JPAC-CIL in the identification of human remains recovered from personnel missing from previous American armed conflicts.***

Size: 1 Mil, ~10 Gov, ~127 Contractors

Location: Rockville, MD

Affiliation: AFME



Evidence Collection and DNA Sampling



USS Cole: Oct 2000



UA 93: Sep 2001



EA 990: Oct 1999



AKA 261: Jan 2000



AA 77: Sep 2001



Learjet: Oct 1999



US Air Express 5481: Jan 2003



Armed Forces Repository of Specimen Samples for the Identification of Remains (AFRSSIR)

- *Repository of 5 million DNA samples,
primarily from military service members*
- *Casualty identification*



- ***Searchable database of DNA profiles from detainees and known or suspected terrorists***
- ***Partnership with defense, intelligence, and law enforcement programs***



Joint POW/MIA Accounting Command Central Identification Laboratory

Mission:

JPAC

- ***Achieve the fullest possible accounting of US service personnel missing from past conflicts***
- ***Perform humanitarian missions as directed***

CIL

- ***Direct field recovery of human remains***
- ***Conduct laboratory analyses of remains to support identifications***
- ***Provide expert consultation to DOD and other government agencies in the area of human recovery and identification***
- ***Conduct scientific research***

Size: 25 forensic anthropologists, 3 forensic odontologists, 8 Life Support Investigators, 10 photographers, and administrative staff

Location: Hawaii

Affiliation: Pacific Command

**JPAC-CIL is the largest forensic Anthropology laboratory
in the world**





U.S. Army Criminal Investigation Laboratory

Mission:

• Provide worldwide forensic laboratory services, training, and R&D to all DOD investigative agencies, in:

- Trace Evidence
- DNA/Serology
- Latent Prints
- Firearms & Toolmarks
- Digital Evidence
- Drug Chemistry
- Forensic Documents

- **DeFacto Executive Agent for Crime Lab Support to the Military Criminal Investigation Organizations (MCIOs)**
- **DOD Executive Agent for the Military Convicted Offender Program / DNA Profile Databasing**

Size: FY09: 157 Rqmts / 137 Auth

Location: Atlanta, GA

Affiliation: Army



**USACIL provides the widest range of services
of all of the DOD accredited forensic laboratories**



USACIL Services

- Evidence Examination*
- Crime Scene Support*
- Court Testimony*
- Training*
- Research And Development*
- Field Investigative Equipment Acquisition*
- Clearing House For Non-traditional Forensic Services*
- Consultation*
- Support To The Warfighter*
- Database Development & Access*



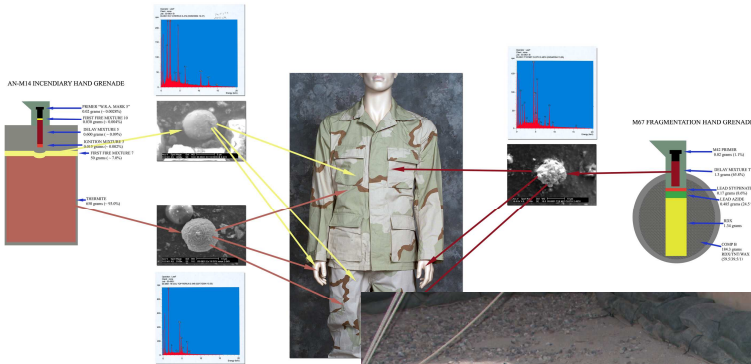
USACIL SUPPORT TO THE WARFIGHTER



Tillman Case



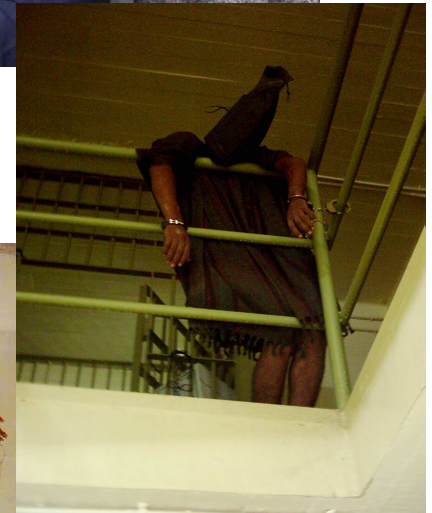
No Gun Ri



Akbar



Abu Ghraib





Military Criminal Investigative Organizations (MCIO) Forensic Consultant Programs

- *Investigators with degrees in Forensic Science*
- *Provide advice and assistance to investigators*
- *Review of major cases and triage evidence prior to submission to labs*
- *Help optimize and standardize evidence collection and submissions*
- *Help optimize and standardize utilization of laboratory reports and services*



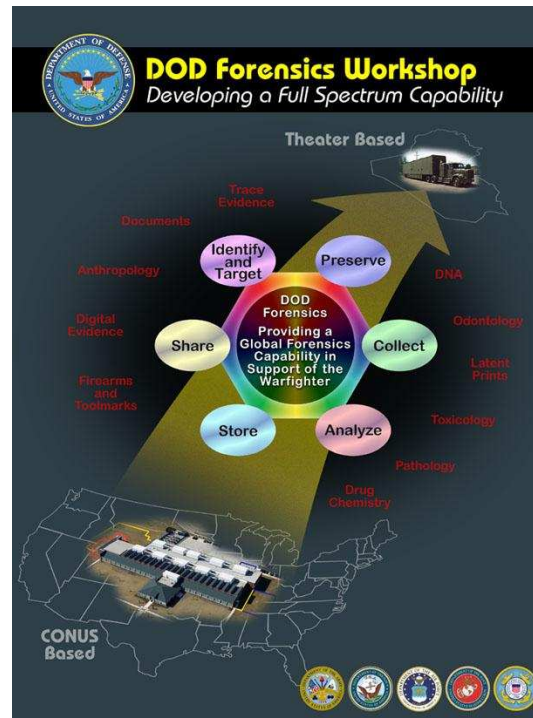
DOD Forensics – The Positive

- Institutional labs have a broad, robust set of capabilities*
- Institutional labs “relatively” well resourced*
 - Funding*
 - Staffing*
 - Training*
 - Equipment*
- All institutional labs nationally accredited*
- DOD personnel very active in professional forensic organizations, national certification / accreditation bodies, and national scientific working groups*



DOD Forensics – The Negative

- ∅ Not centrally managed, integrated or coordinated*
- ∅ Not resourced for emerging missions*



Currently developing the “Defense Forensic Enterprise System”



QUESTIONS?