



NATIONAL INSTITUTES OF HEALTH

Research Portfolio Online Reporting Tool (RePORT)

REPORTS, DATA AND ANALYSES OF NIH RESEARCH ACTIVITIES

# Federal Demonstration Partnership

May 13, 2010



## NATIONAL INSTITUTES OF HEALTH NIH Research Portfolio Online Reporting Tools

<http://report.nih.gov>

<http://projectreporter.nih.gov>

James Onken, Ph.D., MPH  
NIH Office of Extramural Research





NATIONAL INSTITUTES OF HEALTH

## Research Portfolio Online Reporting Tool (RePORT)

REPORTS, DATA AND ANALYSES OF NIH RESEARCH ACTIVITIES

# Opening the Black Box



**NIH REPORTING**  
<http://RePORT.NIH.GOV>

### RESEARCH PORTFOLIO ONLINE REPORTING TOOLS (RePORT)

In addition to carrying out its scientific mission, NIH exemplifies and promotes the highest level of public accountability. To that end, the Research Portfolio Online Reporting Tools provides access to reports, data, and analyses of NIH research activities, including information on NIH expenditures and the results of NIH-supported research.

 Strategic Plans	 Budget & Spending	 Success Rates
 Categorical Spending	 Funded Organizations	 Investigators and Trainees
 NIH Data Book	 Special Reports Biennial Report	 Searchable Public Databases Reports Search
 Recovery Act	 ReTools	 RePORT Atlas

*and more...*



“Because NIH officials have said that the NIH’s own statistics on spending by disease are not very useful, it is incumbent on those officials to improve the quality and analysis of its data on allocation of NIH funds by disease for planning and priority-setting purposes.”

- *Scientific Opportunities and Public Needs: Improving Priority Setting and Public Input at the National Institutes of Health* (Institute of Medicine, 1998)

“ ... the Committee concludes that the current lack of an information management method and infrastructure to collect, analyze, and report investment data in a timely fashion must be addressed ... ”

- *Enhancing the Vitality of the National Institutes of Health: Organizational Change to Meet New Challenges* (National Research Council and Institute of Medicine, 2003)



**Requires establishment of electronic system to uniformly code research grants and activities of the Office of the Director and of all the national research institutes and national centers**

*The electronic system shall:*

- be searchable by a variety of codes, such as grant type, IC, and public health area of interest (RCDC)*
- when permissible, shall provide information on relevant literature and patents that are associated with research activities of the National Institutes of Health (RePORTER)*





NATIONAL INSTITUTES OF HEALTH

Research Portfolio Online Reporting Tool (RePORT)

REPORTS, DATA AND ANALYSES OF NIH RESEARCH ACTIVITIES

# Central Point of Public Access







Public Law 109-482  
109th Congress

An Act

To amend title IV of the Public Health Service Act to revise and extend the authorities of the National Institutes of Health, and for other purposes.

Jan. 15, 2007

[H.R. 6164]

*Be it enacted by the Senate and House of Representatives of the United States of America in Congress assembled,*

**SECTION 1. SHORT TITLE.**

This Act may be cited as the "National Institutes of Health Reform Act of 2006".

National  
Institutes of  
Health Reform  
Act of 2006.  
42 USC 201 note.

**"SEC. 402B. ELECTRONIC CODING OF GRANTS AND ACTIVITIES.**

42 USC 282b.

"The Secretary, acting through the Director of NIH, shall establish an electronic system to uniformly code research grants and activities of the Office of the Director and of all the national research institutes and national centers. The electronic system shall be searchable by a variety of codes, such as the type of research grant, the research entity managing the grant, and the public health area of interest. When permissible, the Secretary, acting through the Director of NIH, shall provide information on relevant literature and patents that are associated with research activities of the National Institutes of Health.

**"SEC. 403. BIENNIAL REPORTS OF DIRECTOR OF NIH.**

42 USC 283.

**2009 GCN AWARDS**

**Honorable Mentions: 10 projects worth watching**

o Oct 12, 2009



National Institutes of Health, Health and Human Services Department –  
Office of Extramural Research for the Research Portfolio

Project: Online Reporting Tool (RePORT)

RePORT provides a publicly-accessible electronic system for searching NIH-funded research projects and supplies information on relevant literature and patents that result from that research.

- Economists and science policy analysts
- Other federal science agencies
- Patients and their friends and family

SPICE

LIFE

[Data Recovery Center](#)

ure

[Weight Loss Program](#)

factly





NATIONAL INSTITUTES OF HEALTH

## Research Portfolio Online Reporting Tool (RePORT)

REPORTS, DATA AND ANALYSES OF NIH RESEARCH ACTIVITIES

# RePORT History

### FY 2008

Award Data for Individual Organizations

Report Search

Strategic Plans

### FY 2009

Award Data for Individual Organizations

Report Search

Strategic Plans

CATEGORICAL SPENDING FY08

NIH Data Book FY08

Geo-Coding

ReTools

RePORT Atlas

RECOVERY ACT

BIENNIAL REPORT OF THE DIRECTOR FY07

### FY 2010

Award Data for Individual Organizations

Report Search

Strategic Plans

CATEGORICAL SPENDING FY09

NIH Data Book FY09

Geo-Coding

ReTools

RePORT Atlas

RECOVERY ACT

BIENNIAL REPORT OF THE DIRECTOR FY09

NIH RePORTER v1.0

My RePORTER Beta

NIH Visual RePORTER Beta

RePORTER: WIDGETS v 1.0

ExPORTER Beta

NIH RECOVERY ACT INVESTMENT REPORTS v 1.0

Global RePORT Beta

InPORT: IC-RCDC FY09



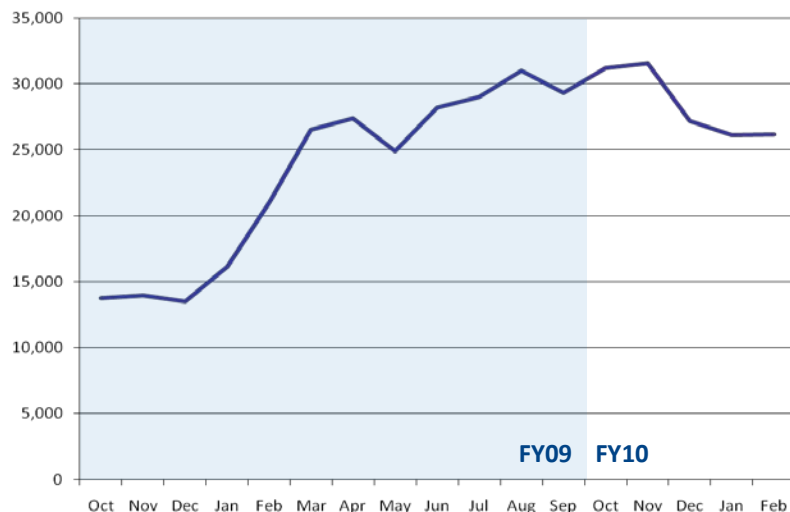


NATIONAL INSTITUTES OF HEALTH

## Research Portfolio Online Reporting Tool (RePORT)

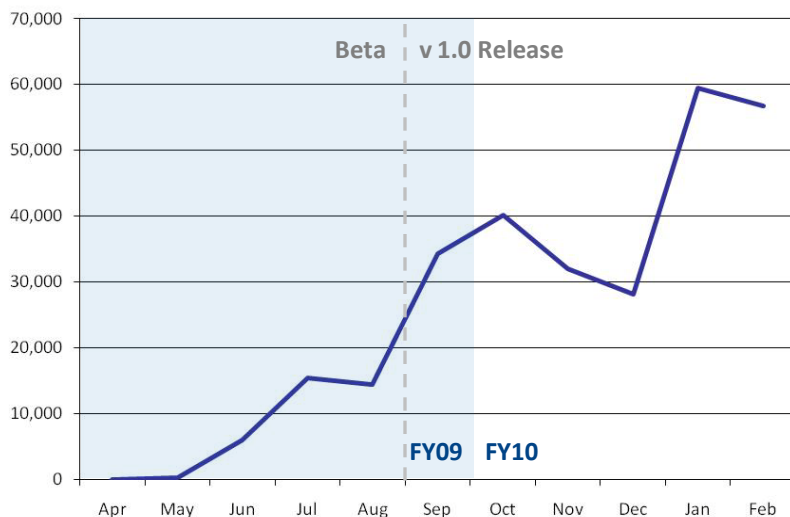
REPORTS, DATA AND ANALYSES OF NIH RESEARCH ACTIVITIES

# Monthly RePORT Usage



The number of unique visitors to the RePORT web site each month doubled over the course of FY 2009

**Average number of users daily:  
6,000**



The number of RePORTER users has increased dramatically

**Average number of users daily:  
4,000**







## RESEARCH PORTFOLIO ONLINE REPORTING TOOL (RePORT)

In addition to carrying out its scientific mission, NIH exemplifies and promotes the highest level of public accountability. To that end, the Research Portfolio Online Reporting Tool provides access to reports, data, and analyses of NIH research activities, including information on NIH expenditures and the results of NIH-supported research.



## REPORTS, DATA AND ANALYSES OF NIH RESEARCH ACTIVITIES

To provide NIH stakeholders with quick and easy access to basic information on NIH programs, the NIH has created a single repository of reports, data, and analyses, along with several tools for searching this database. A common classification scheme based on the traditional NIH budget categories is used to group similar reports. Several different filters can be applied to find information specific to a particular NIH Institute or Center, funding mechanism, or topic of interest.



## NIH DATA BOOK

The NIH Data Book (NDB) provides basic summary statistics on extramural grants and contract awards, grant applications, the organizations that NIH supports, the scientific workforce, and trainees and fellows supported through NIH programs. Tables and charts are provided in a variety of formats, including Powerpoint(PPT) slides and Portable Document Format (PDF) files.



## BIENNIAL REPORT OF THE DIRECTOR, NATIONAL INSTITUTES OF HEALTH, FISCAL YEARS 2006 & 2007

The NIH Biennial Report, mandated by the NIH Reform Act of 2006, provides an assessment of the state of biomedical and behavioral research, a portrait of NIH research activities (integrated across all 27 Institutes and Centers), some key research approaches and resources used in NIH research, and a review of those NIH Centers of Excellence that have been established by statutory mandate.



## ESTIMATES OF FUNDING FOR VARIOUS RESEARCH, CONDITION, AND DISEASE CATEGORIZATION (RCDC)

The NIH recognizes the importance of keeping the American people informed about how their tax dollars are spent to support medical research. In 2009, the NIH will unveil the Research, Condition, and Disease Categorization (RCDC) system. RCDC will provide consistent and transparent information to the public about NIH research. With this new computer-based tool, the public will see NIH's research activities broken down into 215 categories each fiscal year.



## RePORT EXPENDITURES AND RESULT (RePORTER)

The NIH RePORT Expenditures and Results (RePORTER) site retains all of the search capabilities of the CRISP system it replaces. In Spring 2009, these capabilities will be enhanced with new ways to search, results (publications and patents) of both intramural and extramural projects, and links to related information in other databases such as the National Library of Medicine's PubMed.





## Reports

ADVANCED SEARCH

## Search Results for Reports and Statistics

NEW SEARCH

ADVANCED SEARCH

IC:   
 Top

Research Project Grants: Applications, awards, success rates, and funding by type, activity, and IC

Applications, Number Awards, Number Awards, Total Costs Obligations, Number Obligations, Total Costs Success Rates

Activity FY IC

2000 - 2009

VIEW REPORT

IC	Portfolio	Mechanism	Activity
All NIH (Aggregate)	Extramural Programs	Research Grants	DP1, DP2, P01, P42,
FIC		Research Grants, RPGs	PN1, R00, R01, R03,
NCCAM			R15, R21, R29, R33,
NCI			R34, R36, R37, R55,
NCMHD			R56, RC1, RL1, RL2,
NCRR			RL5, RL9, U01, U19,
NEI			UC1, UC7
NHGRI			
NHLBI			
NIA			
NIAAA			
NIAID			
NIAMS			
NIBIB			
NICHD			
NIDA			
NIDCD			
NIDCR			
NIDDK			
NIEHS			
NIGMS			
NIMH			
NINDS			
NINR			
NLM			
ROADMAP			

VIEW REPORT

VIEW REPORT

<http://report.nih.gov/reportmap.aspx>



Coming Soon...



## Funding Facts

Use the filters below to find pertinent data for your search criteria from the NIH Data Book. Slide numbers will be given along with the salient data points to assist in finding more information in the Data Book.

Topic:  
 Institute/Center:

Activity:  
 Fiscal Year:

Funding Mechanism:

Slide	IC	Fiscal Year	Activity	Topic	Mechanism	Statistic
213	NCI	2003	K Awards	Awards - Number	Research Grants - Career Awards	490

## Research Career Development Awards: Awards by Institute / Center

[PRINTER FRIENDLY](#) [EXPORT TO WORD](#)

## Data:

Institute / Center	2003		2004		2005		2006		2007		2008		2009	
	Awards	Amount	Awards	Amount	Awards	Amount	Awards	Amount	Awards	Amount	Awards	Amount	Awards	Amount
FIC	17	\$1,890,557	20	\$2,233,234	0	\$0	15	\$1,766,928	12	\$1,312,671	10	\$1,114,949	11	\$1,239,614
NCCAM	31	\$4,513,920	39	\$5,512,232	46	\$6,549,993	44	\$6,264,392	43	\$5,847,898	51	\$6,700,788	55	\$7,487,419
NCI	490	\$69,545,790	500	\$72,410,211	537	\$75,504,966	550	\$79,731,039	523	\$78,108,607	528	\$79,837,453	501	\$79,665,676



OF HEALTH



153	All NIH	2002	Research Centers	Done	1,860,000,000
153	All NIH	2003	Research Centers	Budget - Appropriation	\$2,124,000,000
				Research Grants - Centers	\$2,428,000,000



## REPORTS, DATA AND ANALYSES OF NIH RESEARCH ACTIVITIES

To provide NIH stakeholders with quick and easy access to basic information on NIH programs, the NIH has created a single repository of reports, data, and analyses, along with several tools for searching this database. A common classification scheme based on the traditional NIH budget categories is used to group similar reports. Several different filters can be applied to find information specific to a particular NIH Institute or Center, funding mechanism, or topic of interest.

More >> [1](#) [2](#) [3](#) [4](#) [5](#)



Strategic Plans



Budget & Spending



Success Rates



Categorical Spending



[Funded Organizations](#)



Investigators and Trainees

Information on the academic and research institutions, hospitals, private businesses, and non-profit organizations that NIH supports through our research and research training programs

DOI



[Other grants: Number of awards and organizations funded, by organization type](#)

(~51KB)



[http://report.nih.gov/funded\\_organizations/index.aspx](http://report.nih.gov/funded_organizations/index.aspx)





NATIONAL INSTITUTES OF HEALTH

## Research Portfolio Online Reporting Tool (RePORT)

REPORTS, DATA AND ANALYSES OF NIH RESEARCH ACTIVITIES

Coming Soon...

## Awards by Location



U. S. Department of Health &amp; Human Services

[Primary data](#) [Secondary data](#)

NATIONAL INSTITUTES OF HEALTH

## Research Portfolio Online Reporting Tools (RePORT)

REPORTS, DATA AND ANALYSES OF NIH RESEARCH ACTIVITIES

ARCH

RCH

Sum

Sum

HOME

FREQUENTLY REQUESTED REPORTS

REPORTS

CATEGORICAL SPENDING

EXPORT

Summ

Fundin

Resea

Traini

Fellow

Un-Sp

Total

## NEWS UPDATES

Friday, April 9, 2010 -  
Release of [RePORTER](#)  
ver. 1.4: Major  
Enhancements Made to  
the RePORTER Tool.  
Several enhancements  
have been made to the  
RePORT Expenditures  
and Results (RePORTER)  
tool. [more...](#)

Home &gt; Funded Organizations



## Funded Organizations

[Award Data for Individual Organizations](#)[NIH Extramural Awards By State and Foreign Site](#)[NIH Extramural Awards by State and Congressional District](#)

00,000.00

3DP20

[1RC1DK086774-01](#)[Ferristatin: A New Small Molecule Inhibitor of Ir](#)[HARVARD UNIVERSITY \(SCH OF PUBLIC HL](#)

NIDDK

\$479,807.00

[3T32GM074897-05S1](#)[Interdisciplinary Research Training in Biostatist](#)[HARVARD UNIVERSITY \(SCH OF PUBLIC HL](#)

NIGMS

\$91,308.00

[5F32HL083639-04](#)[Destinations on Greenways Related to Physics](#)[HARVARD UNIVERSITY \(SCH OF PUBLIC HL](#)

NHLBI

\$59,402.00

[3R01AG027122-03S1](#)[Racial Discrimination and Risk of Chronic Disea](#)[HARVARD UNIVERSITY \(SCH OF PUBLIC HL](#)

NIA

\$119,903.00

[3K99HL089459-01A1S1](#)[Neighborhood Socioeconomic Environments an](#)[HARVARD UNIVERSITY \(SCH OF PUBLIC HL](#)

NHLBI

\$129,217.00





## Success Rates and Funding Rates

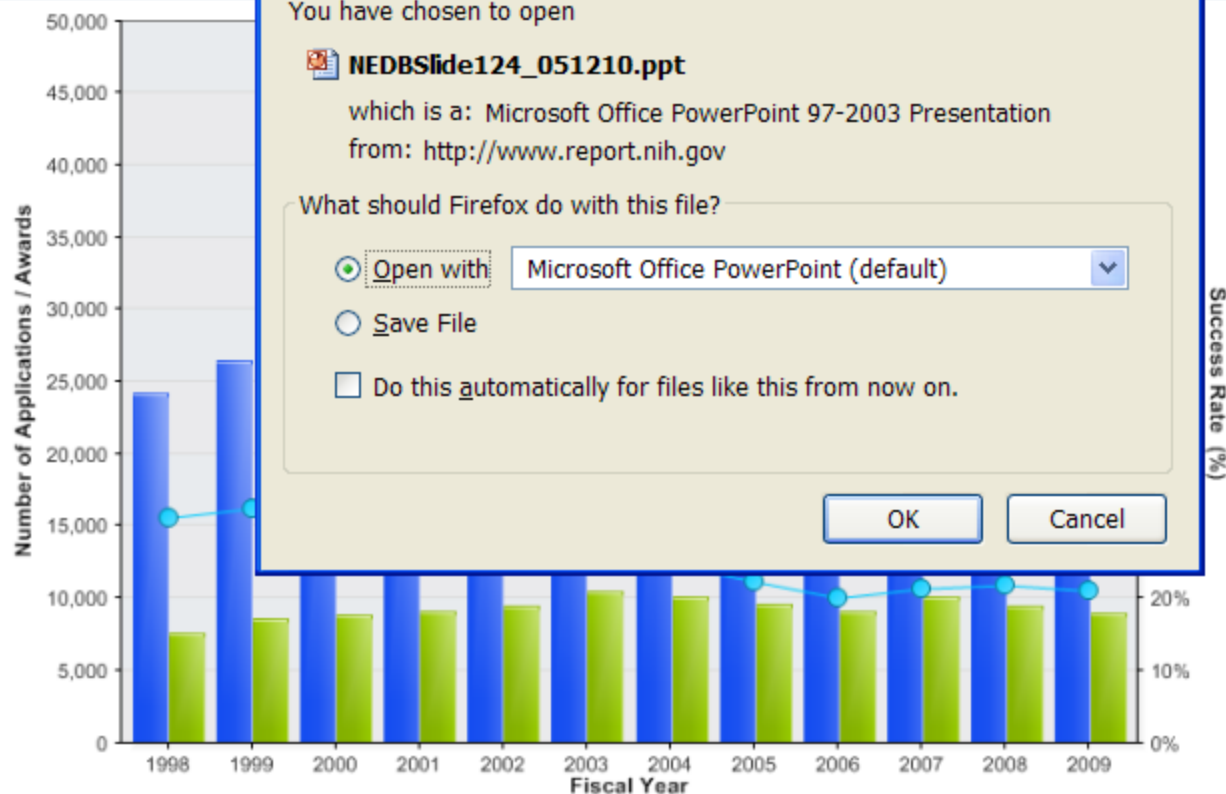
## Research Project Grants: Applications, awards, and success rates

NIH Budget

NIH budget

## Data:

- Research
- Research
- Noncompetitive
- Administrative
- Competitive
- Subtotal
- SBIR/STTR
- Total, Research
- Specific
- Clinical
- Biotechnology
- Competitive
- RCMI
- Total, Research



## Opening NEDBSlide124\_051210.ppt

You have chosen to open



NEDBSlide124\_051210.ppt

which is a: Microsoft Office PowerPoint 97-2003 Presentation

from: http://www.report.nih.gov

What should Firefox do with this file?



Open with

Microsoft Office PowerPoint (default)



Save File



Do this automatically for files like this from now on.

OK

Cancel

PRINTER FRIENDLY

EXPORT TO POWERPOINT



Export to PowerPoint







## BIENNIAL REPORT OF THE DIRECTOR, NATIONAL INSTITUTES OF HEALTH FISCAL YEARS 2006 & 2007

### Notable Examples of NIH Activity

Bier  
Nati  
Fisc

Pre

When  
2006, i  
its em  
establi

By am  
report  
Center  
portrait

#### Neurodegeneration: Fighting the Effects of Age, Exposure, and Disease

**Alzheimer's Disease Neuroimaging Initiative (ADNI):** ADNI is an innovative public-private partnership for examining the potential for serial MRI, positron emission tomography (PET), or other biomarkers to measure earlier and with greater sensitivity the development and progression of mild cognitive impairment and Alzheimer's disease. Early results suggest that researchers may be able to reduce the costs associated with clinical trials by improving imaging and biomarker analysis. One ADNI study found that a standard model can be used to monitor the performance of MRI scanners at multiple clinical sites, ensuring the accuracy of the MRI images. In another study, investigators compared changes over time in PET scans of brain glucose metabolism in people with normal cognition, mild cognitive impairment, and Alzheimer's disease and found that scans correlated with symptoms of each condition and that images were consistent across sites. This finding suggests that PET scans may be a valid method for monitoring the effectiveness of therapies in future clinical trials. More than 200 researchers have already accessed a public database containing thousands of brain images and related clinical data obtained through blood and cerebrospinal fluid analyses.

- For more information, see <http://www.loni.ucla.edu/ADNI>
- For more information, see <http://www.nia.nih.gov/Alzheimers/ResearchInformation/ClinicalTrials/ADNI.htm>
- This example also appears in Chapter 2: *Life Stages, Human Development, and Rehabilitation*.
- (E) (NIA, NIBIB)

**Genome-Wide Genotyping in Parkinson's Disease:** NIH researchers recently conducted genome-wide genotyping of publicly available samples from a cohort of 267 patients with Parkinson's disease and 270 neurologically normal control subjects to identify any common genetic variability with significant effect on the risk for Parkinson's disease. The project has produced approximately 220 million data points in the 537 subjects, the largest collection of publicly available genotypes in a case-control cohort. The release of these data facilitates research on Parkinson's disease and other neurodegenerative disorders, and the genotypes from neurologically normal control subjects can be used as a comparison cohort for other studies, dramatically reducing the cost of future research.

- [Fung HC, et al. Lancet Neurol 2006;5:911-6, PMID: 17052657](#)
- For more information, see <http://www.nia.nih.gov/NewsAndEvents/PressReleases/PR20060927parkinsons.htm>
- This example also appears in Chapter 3: *Genomics*.
- (E/I) (NIA, NINDS)

IZED.



ct of  
ssion,  
ment

rated





## Estimates of Funding for Various Research, Condition, and Disease Categories (RCDC)



SEARCH RESEARCH/DISEASE AREAS

GO

PRINT

EXPORT TO EXCEL



	Research/Disease Areas (Dollars in millions and rounded)	FY 2006 Actual	FY 2007 Actual NIH Historical Method 12/	FY 2007 Actual NIH Revised Method 12/	FY 2008 Actual	FY 2009 Actual (Non-ARRA)	FY 2009 Actual (ARRA) 13/	FY 2010 Estimated (Non-ARRA)	FY 2010 Estimated (ARRA) 14/	FY 2011 Estimated
Ca										
Ac Re Dis Sy	Acute Respiratory Distress Syndrome	\$74	\$48	\$87	<a href="#"><u>\$82</u></a>	<a href="#"><u>\$103</u></a>	<a href="#"><u>\$17</u></a>	\$106	\$9	\$109
	Agent Orange & Dioxin	\$17	\$18	\$15	<a href="#">FY 2008 Actual \$82M. Click here to get the detailed project listing</a>					\$14
Ac Re Dis Sy	Aging	\$2,431	\$2,462	\$1,879	<a href="#"><u>\$1,965</u></a>	<a href="#"><u>\$3,015</u></a>	<a href="#"><u>\$554</u></a>	\$3,093	\$363	\$3,172
	Alcoholism	\$511	\$521	\$443	<a href="#"><u>\$452</u></a>	<a href="#"><u>\$441</u></a>	<a href="#"><u>\$75</u></a>	\$452	\$48	\$467
	Allergic Rhinitis (Hay Fever)	\$4	\$5	\$7	<a href="#"><u>\$6</u></a>	<a href="#"><u>\$4</u></a>	<a href="#"><u>\$1</u></a>	\$4	\$1	\$4
	ALS	\$44	\$39	\$40	<a href="#"><u>\$43</u></a>	<a href="#"><u>\$43</u></a>	<a href="#"><u>\$13</u></a>	\$44	\$11	\$45
Ac Re Dis Sy	Alzheimer's Disease	\$643	\$645	\$411	<a href="#"><u>\$412</u></a>	<a href="#"><u>\$457</u></a>	<a href="#"><u>\$77</u></a>	\$469	\$58	\$480
	American Indians / Alaska Natives	\$155	\$141	\$159	<a href="#"><u>\$142</u></a>	<a href="#"><u>\$169</u></a>	<a href="#"><u>\$19</u></a>	\$173	\$6	\$177
Ac Re	Anorexia	\$15	\$12	\$8	<a href="#"><u>\$7</u></a>	<a href="#"><u>\$8</u></a>	<a href="#"><u>\$2</u></a>	\$8	\$2	\$8
	Anthrax	\$150	\$105	\$160	<a href="#"><u>\$134</u></a>	<a href="#"><u>\$102</u></a>	<a href="#"><u>\$13</u></a>	\$105	\$10	\$108
	Antimicrobial Resistance	\$221	\$269	\$209	<a href="#"><u>\$228</u></a>	<a href="#"><u>\$251</u></a>	<a href="#"><u>\$52</u></a>	\$257	\$24	\$265
	Aphasia	\$15	\$14	\$20	<a href="#"><u>\$22</u></a>	<a href="#"><u>\$22</u></a>	<a href="#"><u>\$3</u></a>	\$22	\$1	\$23
	Arctic	\$17	\$19	\$25	<a href="#"><u>\$22</u></a>	<a href="#"><u>\$28</u></a>	<a href="#"><u>\$6</u></a>	\$29	\$1	\$29

<http://report.nih.gov/rcdc/categories/>



## Recovery Act

- [ARRA Funding Maps](#)
- [NIH Recovery Act Grant Award Downloads](#)
- [Search NIH-Funded Recovery Act Projects](#)



[NIH and the American Recovery and Reinvestment Act](#)



[NIH ARRA FY 2009 Funding Report](#)



[NIH Institute, Center, and Office Recovery Act Sites](#)



[NIH Recovery Act Investment Reports](#)



<http://report.nih.gov/recovery/>



## NIH Recovery Act Grant Award Downloads

1/28/2010: Please note that the Award Date column in these spreadsheets has been replaced by Award Notice Issued date.



### [NIH Recovery Act Grant Awards: Fiscal Year 2009](#)

This is a frozen file of ARRA-funded **grants** awarded through 9/30/2009. It does not include other NIH ARRA-funded activities, such as contracts.

- Data frozen on 10/1/2009



### [NIH Readiness Tool: For quarterly ARRA recipient reporting, April 1-10, 2010](#)

**Note:** The congressional district information contained in this spreadsheet has not been confirmed. If you are unable to successfully submit your report using the district code provided here, you can verify it on the [US House of Representatives website](#).

- Data as of 4/1/2010



### [NIH Recovery Act Grant Awards: Awarded-To-Date](#)

This is a list of all ARRA-funded **grants** awarded to date, including any award modifications. It does not include other NIH ARRA-funded activities, such as contracts.

For more information, see [Understanding the NIH Recovery Act Grant Award Spreadsheet](#)

- Data as of 5/11/2010





Recovery Act Projects for:

Search for: 

## ARRA Funding Maps

[NIH Grants Funded by the American Recovery and Reinvestment Act of 2009](#)

- Data as of 5/11/2010

[Recovery Act-Funded Supplements Providing Summer Research Experiences](#)

- Data as of 10/1/2009

[ARRA Stories by State](#)

HIT LIST

PUBLICATIONS

PATENTS

EXPORT

There were 2 results matching your search criteria.

Show/Hide Search Criteria

Click on the column header to sort the results

Page 1 of 1

Project Number	Sub #	Project Title	Contact Principal Investigator	Organization	FY	Admin IC	Funding IC	FY Total Cost by IC
<a href="#">1RC1AA019317-01</a>		<a href="#">EPIGENETICS BEHIND LONG-TERM AND TRANSGENERATIONAL EFFECTS OF ADOLESCENT BEHAVIOR</a>	FEIG, LARRY et al.	TUFTS UNIVERSITY BOSTON	2009	NIAAA	OD	\$499,999
<a href="#">1RC1DE020398-01</a>		<a href="#">ORAL HEALTH STATUS AND ITS CORRELATES IN ADULTS WITH DEVELOPMENTAL DISABILITIES</a>	MORGAN, JOHN PATRICK et al.	TUFTS UNIVERSITY BOSTON	2009	NIDCR	NIDCR	\$472,138

Page 1 of 1







NATIONAL INSTITUTES OF HEALTH

## Research Portfolio Online Reporting Tool (RePORT)

REPORTS, DATA AND ANALYSES OF NIH RESEARCH ACTIVITIES

RePORTER



U. S. Department of Health &amp; Human Services

www.hhs.gov



NATIONAL INSTITUTES OF HEALTH

## Research Portfolio Online Reporting Tool (RePORT)

REPORTS, DATA AND ANALYSES OF NIH RESEARCH ACTIVITIES

SEARCH

GO

## RePORT EXPENDITURES &amp; RESULTS (RePORTER)

HOME

FREQUENTLY REQUESTED REPORTS

REPORTS

CATEGORICAL SPENDING

REPORTER

GLOSSARY

FAQS

LINKS

CONTACT US

Home &gt; RePORTER &gt; Query Form

Font Size: - +



ABOUT RePORTER DATA

VIEW PROJECT BY  
NIH SPENDING CATEGORYFREQUENTLY  
ASKED QUESTIONS

SUBMIT QUERY

CLEAR QUERY

? NIH Recovery Act Projects:

☐ Show only projects supported by NIH Recovery Act funds

? Term Search:

Logic: ☒ And ☐ Or

Hint: Multiple terms are accepted. Separate each term with a space. You may also use terms in "" (double quotes) for exact terms match.

? Fiscal Year:

Current Projects 

? NIH Spending Category:

? State:

All 

? Congressional District:

 ? Principal Investigator:  
(Last Name, First Name) 

Use "%" for wildcard

? Organization:

SUBMIT QUERY

CLEAR QUERY

? Agency/Institute/Center:

All ☒ Admin ☐ Funding

? Funding Mechanism:

All 

? Award Type:

All 

? Activity Code:

All 

? Project Number:

Format: 5R01CA121298-04

Use "%" for wildcard

? Study Section:

All 

? RFA/PA:

Format: RFA-IC-09-003  
or PA-09-003

Use "%" for wildcard

? Public Health Relevance:

<http://projectreporter.nih.gov/reporter.cfm>





## Search Results

[BACK TO QUERY FORM](#)

ABOUT RePORTER RESULTS



= PubMed



= PubMed Central



= Google Scholar

HIT LIST

PUBLICATIONS

PATENTS

[EXPORT](#)Year of Publication: Records per page: [Show/Hide Search Criteria](#)

In 2010, there were 64 publications citing support from projects in the hit list.

Click on the column header to sort the results

Page 1 of 3 [Next](#) [Last](#)

Core Project Number	Title (Link to full-text in PubMed Central)	Journal (Link to PubMed abstract)	Authors	Related Publications	Cited By
RC1CA147096	In vivo magnetomotive optical molecular imaging using targeted magnetic nanopores.	<a href="#">Proceedings Of The National Academy Of Sciences Of The United States Of America. 2010 May 4; 107 (18):8085-90</a>	John, Renu; Rezaeiipoor, Robabeh; Adie, Steven G; Chaney, Eric J; Oldenburg, Amy L; Marjanovic, Marina; Haldar, Justin P; Sutton, Bradley P; Boppart, Stephen A	 	
RC1DK086304	Effect of indomethacin on bile acid-phospholipid interactions: implication for small intestinal injury induced by nonsteroidal anti-inflammatory drugs.	<a href="#">American Journal Of Physiology. Gastrointestinal And Liver Physiology. 2010 May; 298 (5):G722-31</a>	Zhou, Yong; Dial, Elizabeth J; Doyen, Rand; Lichtenberger, Lenard M	 	
RC1HL099534	Cardiovascular consequences of obese and nonobese obstructive sleep apnea.	<a href="#">The Medical Clinics Of North America. 2010 May; 94 (3):465-78</a>	Ramar, Kannan; Caples, Sean M	 	
RC1HL100474	The host response to sepsis and developmental impact.	<a href="#">Pediatrics. 2010 May; 125 (5):1031-41</a>	Wynn, James; Cornell, Timothy T; Wong, Hector R; Shanley, Thomas P; Wheeler, Derek S	 	
RC1HL100556	gp96, an endoplasmic reticulum master chaperone for integrins and Toll-like receptors, selectively regulates early T and B lymphopoiesis.	<a href="#">Blood. 2010 Mar 25; 115 (12):2380-90</a>	Staron, Matthew; Yang, Yi; Liu, Bei; Li, Janet; Shen, Yuankai; Zuniga-Pflucker, Juan Carlos; Aguila, Hector L; Goldschneider, Irving; Li, Zihai	 	

[DISORDERS IN ADOLESC](#)



## Project Information

[BACK TO QUERY FORM](#)[BACK TO SEARCH RESULTS](#)[PRINT VERSION](#)

DESCRIPTION	DETAILS	RESULTS	HISTORY	SUB-PROJECTS
Project Number:	1RC1CA147096-01	Contact Principal Investigator:	WEI, ALEXANDER	
Title:	INVESTIGATING TUMOR GROWTH DYNAMICS USING MULTIMODAL CONTRAST AGENTS AND OPTICAL	Awardee Organization:	PURDUE UNIVERSITY WEST LAFAYETTE	



## ABOUT RePORTER RESULTS



= PubMed



= PubMed Central



= Google Scholar

Publications: [Publications missing? Principal Investigators click here](#)

Click on the column header to sort the results

Page 1 of 1

Title (Link to full-text in PubMed Central)	Journal (Link to PubMed abstract)	Authors	Related Publications	Cited By
In vivo magnetomotive optical molecular imaging using targeted magnetic nanoprobes.	<a href="#">Proceedings Of The National Academy Of Sciences Of The United States Of America. 2010 May 4; 107 (18):8085-90</a>	John, Renu; Rezaeipoor, Robabeh; Adie, Steven G; Chaney, Eric J; Oldenburg, Amy L; Marjanovic, Marina; Haldar, Justin P; Sutton, Bradley P; Boppart, Stephen A	 	

## Patents:

Patent Number	Patent Title
No patents information available for 1RC1CA147096-01	

## Project Funding Information for 2009:

Total Funding: \$500,000

Year	Funding IC	FY Total Cost by IC
2009	NATIONAL CANCER INSTITUTE	\$500,000

Categorical Spending by IC:

[Click here for more information on NIH Categorical Spending](#)

Imaging, Three-Dimensional; In Vitro; Leakage; Magnetism; Mammals, Mice; Measurement; Measures; Mechanics; Medical Imaging, Three Dimensional; Metric; Mice; Multimodal Imaging; Multimodality; Murine; Mus; OCT Tomography; Optical Coherence Tomography; Optics; Plastics; Property; Property, LOINC Axis 2; Radiopaque Media; Resolution; Spillage; Technology; Tensile Strength; Three-Dimensional Imaging; Tissues; Tomography, Optical Coherence; Tumor Cell; Tumor Tissue; Visual; epithelial carcinoma; imaging; macrophage; magnetic; migration; nano particle; nano probe; nanoparticle; nanoprobe; neoplastic cell; optic imaging; optical imaging; physical science; tumor; tumor growth; tumor xenograft





## Log into the NIH Manuscript Submission System <http://nihms.nih.gov/>

### Log In

Proceed to the NIHMS system if you are ready to submit a manuscript.

### Grant Lookup Tool

Search the NIHMS grant database to find current grant numbers.

### Statistics

Review NIHMS submission statistics that are compiled on a monthly basis.

## ... through the eRA Commons

### NIH Manuscript Submission System

#### Login Options

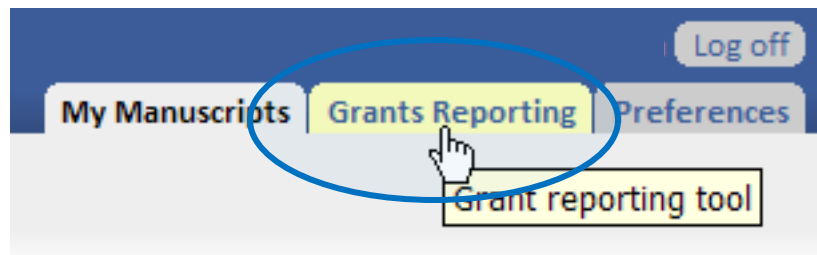
The NIH Manuscript Submission allows you to submit an electronic version of your peer-reviewed final manuscript for inclusion in [PubMed Central](#). Eligible manuscripts must have been funded by one of the participating groups listed in the login table below.

#### Choose a login route:

Route	Users	Policy
eRA Commons	NIH extramural principal investigators, grantees or applicants	
NIH	NIH intramural scientists	
publisher	publishers	
HHMI	Howard Hughes Medical Institute investigators	
myNCBI	others	

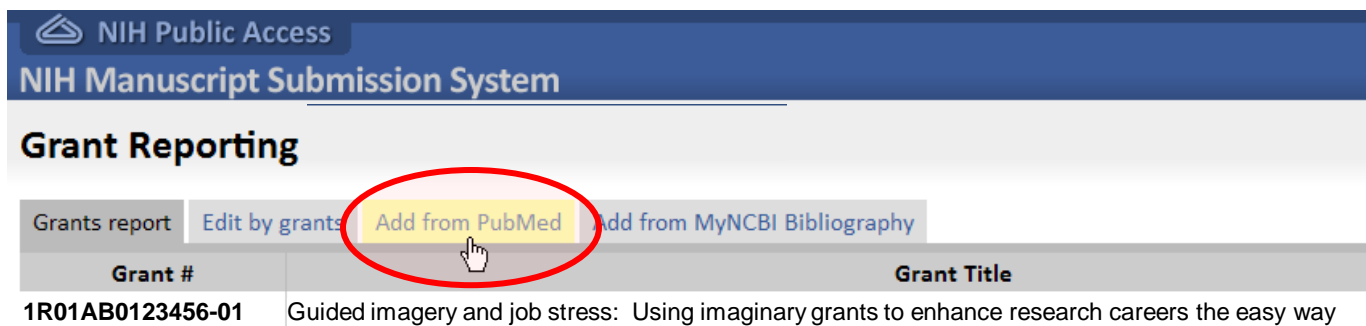


[Adding Publications to RePORTER](#)



Select Grants Reporting

... and Add from PubMed





## Select publication(s) to be added ...

### Grant Reporting

Grants report

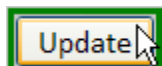
Edit by grants

Add from PubMed

Add from MyNCBI Bibliography

Publications	PubMed	PMC	Grants
A prospective study of esophageal squamous cell carcinoma in achalasia. <i>Gastrointest Endosc</i> 11/01/1992	1473696		
Long term results of choledochoduodenostomy in the treatment of choledocholithiasis. <i>Gastrointest Endosc</i> 05/01/1992	1607110		
Individual differences in the use of simplification strategies in a complex decision-making task. <i>J Exp Psychol Hum Percept Perform</i> 02/01/1985	3156956		
<input checked="" type="checkbox"/> <b>1R01AB0123456-01</b> Guided imagery and job stress: Using imaginary grants to enhance research careers the easy way			
Lateral eye movements as indicators of processing strategies in paired-associate learning: ... rror type. <i>Pavlov J Biol Sci</i> 07/01/1981	7290757		
<input type="checkbox"/> <b>1R01AB0123456-01</b> Guided imagery and job stress: Using imaginary grants to enhance research careers the easy way			
Effect of different coffees on esophageal acid contact time and symptoms in coffee-sensitive subjects. <i>Physiol Behav</i> 03/01/1995	7753895		
Clinical trials. How should they be designed? <i>Gastrointest Endosc Clin N Am</i> 04/01/1994	8193874		
Predicting the presence of choledocholithiasis in patients with symptomatic cholelithiasis. <i>Am J Gastroenterol</i> 04/01/1996	8677945		
Evaluation of state efforts to improve systems of care for children and adolescents with s ... ort study. <i>J Ment Health Adm</i> 07/01/1992	10121506		
<b>1R01AB0123456-01</b> Guided imagery and job stress: Using imaginary grants to enhance research careers the easy way			

## Select the grant(s) providing support for each publication ...



And update the database

Changes can take up to **one week** to appear in RePORTER—please check back!



[Adding Publications to RePORTER](#)





SUBMIT QUERY

CLEAR QUERY

NIH Recovery Act Projects:

Challenge Grants

SELECT

Agency/Institute/Center:

All

SELECT

NIH ExPORTER - RePORTER Data Download

We invite you to take advantage of these data. You can help us improve this public service by providing feedback, suggestions, and notifying us of errors in the data. With your help, we will continue to improve the data.

**NOTE: This is a beta version and refine record for until both xml and csv files are available.**

**RELEASE NOTE: Amos replaced by APPLICANT with that used for the**



NATIONAL INSTITUTES OF HEALTH

Research Portfolio Online Reporting Tools (RePORT)

REPORTS, DATA AND ANALYSES OF NIH RESEARCH ACTIVITIES

ExPORTER

available  
changes

Text -A A +A

SHARE

ExPORTER CATALOG

CRISP CATALOG

ABOUT ExPORTER

ExPORTER FAQs

RePORTER

CONTACT US

been  
compatible

## PROJECTS

## Project File Name

FY 2010 RePORTER Project

FY 2010 RePORTER Project

FY 2010 RePORTER Project

FY 2010 RePORTER Project

FY 2010 RePORTER Project

FY 2010 RePORTER Project

FY 2009 RePORTER Project

## WELCOME TO ExPORTER

This site was created to provide raw data for those who would like to conduct detailed analyses of the research projects found in RePORTER or load these records into their own data systems. These data are drawn from multiple sources and are provided to the public in the spirit of transparency even though the data, and any analyses derived from them, cannot be considered an official report of the NIH or any of the other federal agencies whose records can be found in RePORTER. The information in these files has been gathered from multiple systems and databases. As a result, there are likely to be errors in these data and RePORTER is under continuous improvement to eliminate them. To help us in this effort, we encourage you to report errors that we have not yet found to [RePORT@od.nih.gov](mailto:RePORT@od.nih.gov). In this beta release, there may be frequent updates and changes to the site and data.

ExPORTER makes downloadable versions of the data accessed through the RePORT Expenditures and Results (RePORTER) interface available to the public. This site is a key component of NIH "open government" initiatives to provide more transparency in NIH activities, improve the quality of the data we collect, and increase its utility.

The data files underlying RePORTER include information on projects funded by NIH and other agencies of the U.S. Department of Health and Human Services. In addition to detailed information on each project, files are available with information on publications and patents that have acknowledged support from these projects. In addition to the RePORTER project, publication, and patent data sets (as well as tables providing the linkages between these data sets), ExPORTER provides access to data exported from the NIH CRISP system, a predecessor to RePORTER.

We invite you to take advantage of these data. You can help us improve this public service by providing feedback, suggestions, and notifying us of errors in the data. With your help, we will continue to grow and enhance this service in the weeks, months, and years ahead.

## DOWNLOAD

ExPORTER FORMAT FILES CATALOG



## Download ExPORTER Format Files

LEGACY CRISP EXPORT FORMAT FILES

(AVAILABLE UNTIL JUNE 30, 2010)



## ANNOUNCEMENTS

CRISP legacy data format files will be made available through June 30, 2010. This site currently provides access to beta release versions of the ExPORTER files. Their content and format may change over the next two months in response to user feedback. Please keep this in mind when designing new, or updating existing, applications that will use these data. We will post a message on this site when files in the final format are released. Any questions or concerns can be addressed to [RePORT@od.nih.gov](mailto:RePORT@od.nih.gov).

## Last Updated Date

04/17/2010

03/25/2010

03/25/2010

03/25/2010

03/25/2010

03/25/2010

05/10/2010


<http://projectreporter.nih.gov/exporter/>





THURSDAY, MAY 13, 2010

HHS.gov/Open

Search



Font Size



OPEN.GOV

[Home](#) [Data Sets](#)

## Data Sets

"We aim to be just as open about sharing what we've learned. There is no greater mission than working together to keep our populations safe."

- Secretary Sebelius

[Home](#) [Data Sets](#) [Tools](#) [Our Plan](#) [FOIA](#) [Records Management](#) [Get Involved](#) [Discuss](#) [Leadership](#) [Contacts](#)

### Data Sets

Two types of data sets are available. **Downloads** are open-format data sets presented in csv, xml or other downloadable formats. **Interactive** data sets can be manipulated on the Web. You may **search** by keyword, HHS Agency and/or type. New data sets are being added regularly. The links below will take you to Data.gov where you can access the data set, rate it, and view additional details.

Search Data by Keyword: 

Search

Page 1 of 11 Go to Page: 

Go



= Download



= Interactive

Name

Agency

Type

Category

[NIH Exported Research Portfolio Online Reporting Tools: Expenditures and Results \(ExPORTER\)](#)

This is a monthly snapshot of the data publically accessible through the NIH Research Portfolio Online Reporting Tool, Expenditures and Results (RePORTER) system at <http://report.nih.gov>.

NIH



Science and Technology

[Share Your Ideas](#)

### Open HHS Blog

Chief Technology Officer Todd Park writes about harnessing the power of data, technology and innovation to improve the health and welfare of the nation.





## • MyRePORTER

- Notifications
- Saved Portfolios
- Custom Data Book
- Saved Searches

- Export publications to reference manager
- Publication search
- Hit list analysis and graphing
- Network analysis/clustering of hit lists (PIs, institutions, project terms)
- Links to PI profile pages
- Institution Profile/Dashboard page
- IC Profile/Dashboard page
- Link Categorical Spending page (RCDC project lists) to RePORTER
- Next generation widgets for sharing beyond NIH
- Integrate reports database with RePORTER (provide access to any pre-generated reports that match a user's query)
- Continue improving data and data quality
  - ClinicalTrials.gov linkage
  - Other databases

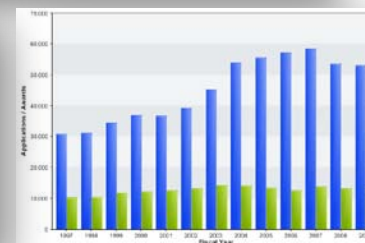
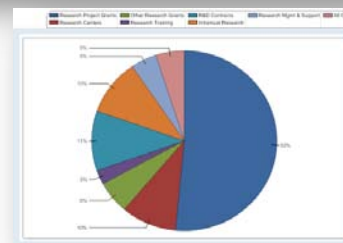


## NIH DATA BOOK

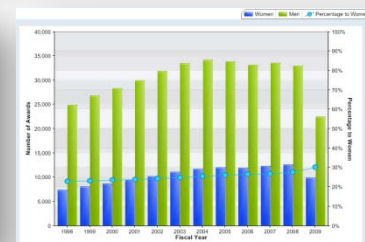
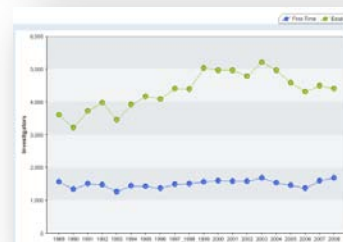
The NIH Data Book (NDB) provides basic summary statistics on extramural grants and contract awards, grant applications, the organizations that NIH supports, the scientific workforce, and trainees and fellows supported through NIH programs. Tables and charts are provided in a variety of formats, including PowerPoint (PPT) slides and Portable Document Format (PDF) files.

NIH Data Book  
v 2.0

- Make the current NIH Data Book personalizable
- Enhanced Funding Facts: quick search for specific NIH budget or funding information
- Enhance current NIH Data Book: increase interactivity
- Automate generation of IC-specific Data Books

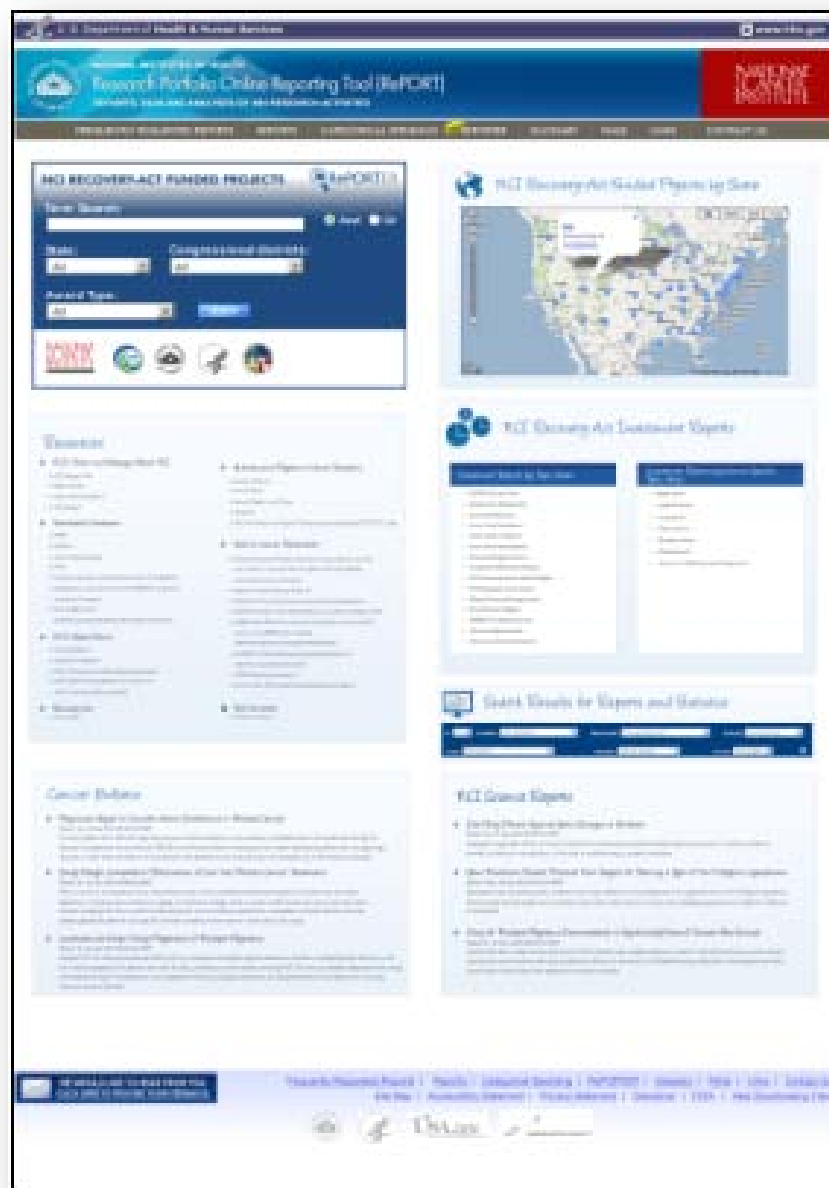


	1990	1991	1992	1993	1994	1995	1996	1997	1998	1999	2000	2001	2002	2003	2004	2005	2006	2007	2008	2009	2010	2011	2012	2013	2014	2015	2016	2017	2018	2019	2020	2021	2022	2023	2024	2025	2026	2027	2028	2029	2030	2031	2032	2033	2034	2035	2036	2037	2038	2039	2040	2041	2042	2043	2044	2045	2046	2047	2048	2049	2050	2051	2052	2053	2054	2055	2056	2057	2058	2059	2060	2061	2062	2063	2064	2065	2066	2067	2068	2069	2070	2071	2072	2073	2074	2075	2076	2077	2078	2079	2080	2081	2082	2083	2084	2085	2086	2087	2088	2089	2090	2091	2092	2093	2094	2095	2096	2097	2098	2099	2100	2101	2102	2103	2104	2105	2106	2107	2108	2109	2110	2111	2112	2113	2114	2115	2116	2117	2118	2119	2120	2121	2122	2123	2124	2125	2126	2127	2128	2129	2130	2131	2132	2133	2134	2135	2136	2137	2138	2139	2140	2141	2142	2143	2144	2145	2146	2147	2148	2149	2150	2151	2152	2153	2154	2155	2156	2157	2158	2159	2160	2161	2162	2163	2164	2165	2166	2167	2168	2169	2170	2171	2172	2173	2174	2175	2176	2177	2178	2179	2180	2181	2182	2183	2184	2185	2186	2187	2188	2189	2190	2191	2192	2193	2194	2195	2196	2197	2198	2199	2200	2201	2202	2203	2204	2205	2206	2207	2208	2209	2210	2211	2212	2213	2214	2215	2216	2217	2218	2219	2220	2221	2222	2223	2224	2225	2226	2227	2228	2229	2230	2231	2232	2233	2234	2235	2236	2237	2238	2239	2240	2241	2242	2243	2244	2245	2246	2247	2248	2249	2250	2251	2252	2253	2254	2255	2256	2257	2258	2259	2260	2261	2262	2263	2264	2265	2266	2267	2268	2269	2270	2271	2272	2273	2274	2275	2276	2277	2278	2279	2280	2281	2282	2283	2284	2285	2286	2287	2288	2289	2290	2291	2292	2293	2294	2295	2296	2297	2298	2299	2300	2301	2302	2303	2304	2305	2306	2307	2308	2309	2310	2311	2312	2313	2314	2315	2316	2317	2318	2319	2320	2321	2322	2323	2324	2325	2326	2327	2328	2329	2330	2331	2332	2333	2334	2335	2336	2337	2338	2339	2340	2341	2342	2343	2344	2345	2346	2347	2348	2349	2350	2351	2352	2353	2354	2355	2356	2357	2358	2359	2360	2361	2362	2363	2364	2365	2366	2367	2368	2369	2370	2371	2372	2373	2374	2375	2376	2377	2378	2379	2380	2381	2382	2383	2384	2385	2386	2387	2388	2389	2390	2391	2392	2393	2394	2395	2396	2397	2398	2399	2400	2401	2402	2403	2404	2405	2406	2407	2408	2409	2410	2411	2412	2413	2414	2415	2416	2417	2418	2419	2420	2421	2422	2423	2424	2425	2426	2427	2428	2429	2430	2431	2432	2433	2434	2435	2436	2437	2438	2439	2440	2441	2442	2443	2444	2445	2446	2447	2448	2449	2450	2451	2452	2453	2454	2455	2456	2457	2458	2459	2460	2461	2462	2463	2464	2465	2466	2467	2468	2469	2470	2471	2472	2473	2474	2475	2476	2477	2478	2479	2480	2481	2482	2483	2484	2485	2486	2487	2488	2489	2490	2491	2492	2493	2494	2495	2496	2497	2498	2499	2500	2501	2502	2503	2504	2505	2506	2507	2508	2509	2510	2511	2512	2513	2514	2515	2516	2517	2518	2519	2520	2521	2522	2523	2524	2525	2526	2527	2528	2529	2530	2531	2532	2533	2534	2535	2536	2537	2538	2539	2540	2541	2542	2543	2544	2545	2546	2547	2548	2549	2550	2551	2552	2553	2554	2555	2556	2557	2558	2559	2560	2561	2562	2563	2564	2565	2566	2567	2568	2569	2570	2571	2572	2573	2574	2575	2576	2577	2578	2579	2580	2581	2582	2583	2584	2585	2586	2587	2588	2589	2590	2591	2592	2593	2594	2595	2596	2597	2598	2599	2600	2601	2602	2603	2604	2605	2606	2607	2608	2609	2610	2611	2612	2613	2614	2615	2616	2617	2618	2619	2620	2621	2622	2623	2624	2625	2626	2627	2628	2629	2630	2631	2632	2633	2634	2635	2636	2637	2638	2639	2640	2641	2642	2643	2644	2645	2646	2647	2648	2649	2650	2651	2652	2653	2654	2655	2656	2657	2658	2659	2660	2661	2662	2663	2664	2665	2666	2667	2668	2669	2670	2671	2672	2673	2674	2675	2676	2677	2678	2679	2680	2681	2682	2683	2684	2685	2686	2687	2688	2689	2690	2691	2692	2693	2694	2695	2696	2697	2698	2699	2700	2701	2702	2703	2704	2705	2706	2707	2708	2709	2710	2711	2712	2713	2714	2715	2716	2717	2718	2719	2720	2721	2722	2723	2724	2725	2726	2727	2728	2729	2730	2731	2732	2733	2734	2735	2736	2737	2738	2739	2740	2741	2742	2743	2744	2745	2746	2747	2748	2749	2750	2751	2752	2753	2754	2755	2756	2757	2758	2759	2760	2761	2762	2763	2764	2765	2766	2767	2768	2769	2770	2771	2772	2773	2774	2775	2776	2777	2778	2779	2780	2781	2782	2783	2784	2785	2786	2787	2788	2789	2790	2791	2792	2793	2794	2795	2796	2797	2798	2799	2800	2801	2802	2803	2804	2805	2806	2807	2808	2809	2810	2811	2812	2813	2814	2815	2816	2817	2818	2819	2820	2821	2822	2823	2824	2825	2826	2827	2828	2829	2830	2831	2832	2833	2834	2835	2836	2837	2838	2839	2840	2841	2842	2843	2844	2845	2846	2847	2848	2849	2850	2851	2852	2853	2854	2855	2856	2857	2858	2859	2860	2861	2862	2863	2864	2865	2866	2867	2868	2869	2870	2871	2872	2873	2874	2875	2876	2877	2878	2879	2880	2881	2882	2883	2884	2885	2886	2887	2888	2889	2890	2891	2892	2893	2894	2895	2896	2897	2898	2899	2900	2901	2902	2903	2904	2905	2906	2907	2908	2909	2910	2911	2912	2913	2914	2915	2916	2917	2918	2919	2920	2921	2922	2923	2924	2925	2926	2927	2928	2929	2930	2931	2932	2933	2934	2935	2936	2937	2938	2939	2940	2941	2942	2943	2944	2945	2946	2947	2948	2949	2950	2951	2952	2953	2954	2955	2956	2957	2958	2959	2960	2961	2962	2963	2964	2965	2966	2967	2968	2969	2970	2971	2972	2973	2974	2975	2976	2977	2978	2979	2980	2981	2982	2983	2984	2985	2986	2987	2988	2989	2990	2991	2992	2993	2994	2995	2996	2997	2998	2999	3000
--	------	------	------	------	------	------	------	------	------	------	------	------	------	------	------	------	------	------	------	------	------	------	------	------	------	------	------	------	------	------	------	------	------	------	------	------	------	------	------	------	------	------	------	------	------	------	------	------	------	------	------	------	------	------	------	------	------	------	------	------	------	------	------	------	------	------	------	------	------	------	------	------	------	------	------	------	------	------	------	------	------	------	------	------	------	------	------	------	------	------	------	------	------	------	------	------	------	------	------	------	------	------	------	------	------	------	------	------	------	------	------	------	------	------	------	------	------	------	------	------	------	------	------	------	------	------	------	------	------	------	------	------	------	------	------	------	------	------	------	------	------	------	------	------	------	------	------	------	------	------	------	------	------	------	------	------	------	------	------	------	------	------	------	------	------	------	------	------	------	------	------	------	------	------	------	------	------	------	------	------	------	------	------	------	------	------	------	------	------	------	------	------	------	------	------	------	------	------	------	------	------	------	------	------	------	------	------	------	------	------	------	------	------	------	------	------	------	------	------	------	------	------	------	------	------	------	------	------	------	------	------	------	------	------	------	------	------	------	------	------	------	------	------	------	------	------	------	------	------	------	------	------	------	------	------	------	------	------	------	------	------	------	------	------	------	------	------	------	------	------	------	------	------	------	------	------	------	------	------	------	------	------	------	------	------	------	------	------	------	------	------	------	------	------	------	------	------	------	------	------	------	------	------	------	------	------	------	------	------	------	------	------	------	------	------	------	------	------	------	------	------	------	------	------	------	------	------	------	------	------	------	------	------	------	------	------	------	------	------	------	------	------	------	------	------	------	------	------	------	------	------	------	------	------	------	------	------	------	------	------	------	------	------	------	------	------	------	------	------	------	------	------	------	------	------	------	------	------	------	------	------	------	------	------	------	------	------	------	------	------	------	------	------	------	------	------	------	------	------	------	------	------	------	------	------	------	------	------	------	------	------	------	------	------	------	------	------	------	------	------	------	------	------	------	------	------	------	------	------	------	------	------	------	------	------	------	------	------	------	------	------	------	------	------	------	------	------	------	------	------	------	------	------	------	------	------	------	------	------	------	------	------	------	------	------	------	------	------	------	------	------	------	------	------	------	------	------	------	------	------	------	------	------	------	------	------	------	------	------	------	------	------	------	------	------	------	------	------	------	------	------	------	------	------	------	------	------	------	------	------	------	------	------	------	------	------	------	------	------	------	------	------	------	------	------	------	------	------	------	------	------	------	------	------	------	------	------	------	------	------	------	------	------	------	------	------	------	------	------	------	------	------	------	------	------	------	------	------	------	------	------	------	------	------	------	------	------	------	------	------	------	------	------	------	------	------	------	------	------	------	------	------	------	------	------	------	------	------	------	------	------	------	------	------	------	------	------	------	------	------	------	------	------	------	------	------	------	------	------	------	------	------	------	------	------	------	------	------	------	------	------	------	------	------	------	------	------	------	------	------	------	------	------	------	------	------	------	------	------	------	------	------	------	------	------	------	------	------	------	------	------	------	------	------	------	------	------	------	------	------	------	------	------	------	------	------	------	------	------	------	------	------	------	------	------	------	------	------	------	------	------	------	------	------	------	------	------	------	------	------	------	------	------	------	------	------	------	------	------	------	------	------	------	------	------	------	------	------	------	------	------	------	------	------	------	------	------	------	------	------	------	------	------	------	------	------	------	------	------	------	------	------	------	------	------	------	------	------	------	------	------	------	------	------	------	------	------	------	------	------	------	------	------	------	------	------	------	------	------	------	------	------	------	------	------	------	------	------	------	------	------	------	------	------	------	------	------	------	------	------	------	------	------	------	------	------	------	------	------	------	------	------	------	------	------	------	------	------	------	------	------	------	------	------	------	------	------	------	------	------	------	------	------	------	------	------	------	------	------	------	------	------	------	------	------	------	------	------	------	------	------	------	------	------	------	------	------	------	------	------	------	------	------	------	------	------	------	------	------	------	------	------	------	------	------	------	------	------	------	------	------	------	------	------	------	------	------	------	------	------	------	------	------	------	------	------	------	------	------	------	------	------	------	------	------	------	------	------	------	------	------	------	------	------	------	------	------	------	------	------	------	------	------	------	------	------	------	------	------	------	------	------	------	------	------	------	------	------	------	------	------	------	------	------	------	------	------	------	------	------	------	------	------	------	------	------	------	------	------	------	------	------	------	------	------	------	------	------	------	------	------	------	------	------	------	------	------	------	------	------	------	------	------	------	------	------	------	------	------	------	------	------	------	------	------	------	------	------	------	------	------	------	------	------	------	------	------	------	------	------	------	------	------	------	------	------	------	------	------	------	------	------	------	------	------	------	------	------	------	------	------





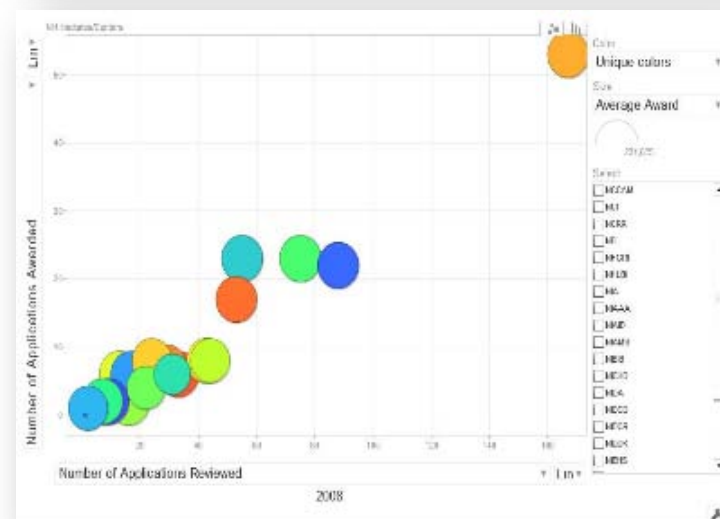
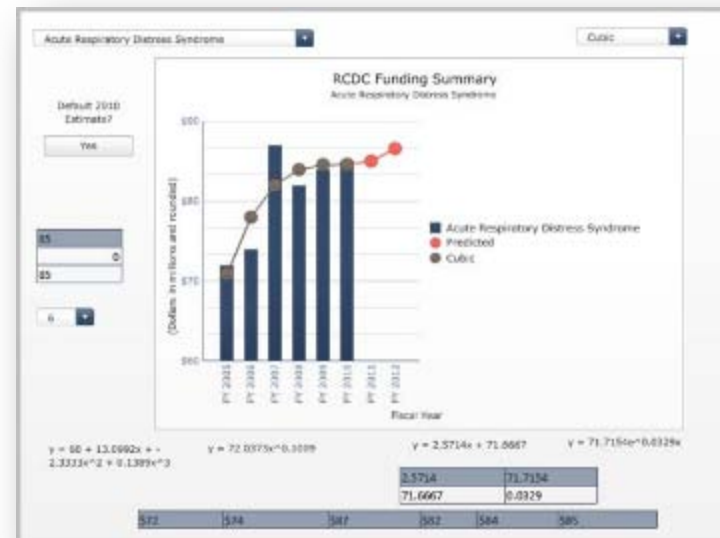
- IC-specific RePORT
  - IC-specific view of RePORT
  - Extend RePORT Content Management System (CMS) to allow IC's to maintain their own content on RePORT
- IC-specific RePORTER
- IC-Specific GIS integration
- Widgets, RSS, Mash-ups







- Graphing capabilities for RePORT
- Interactive analysis capabilities
- Expand ReTools to include latest developments in visualization technologies
- Web Service development





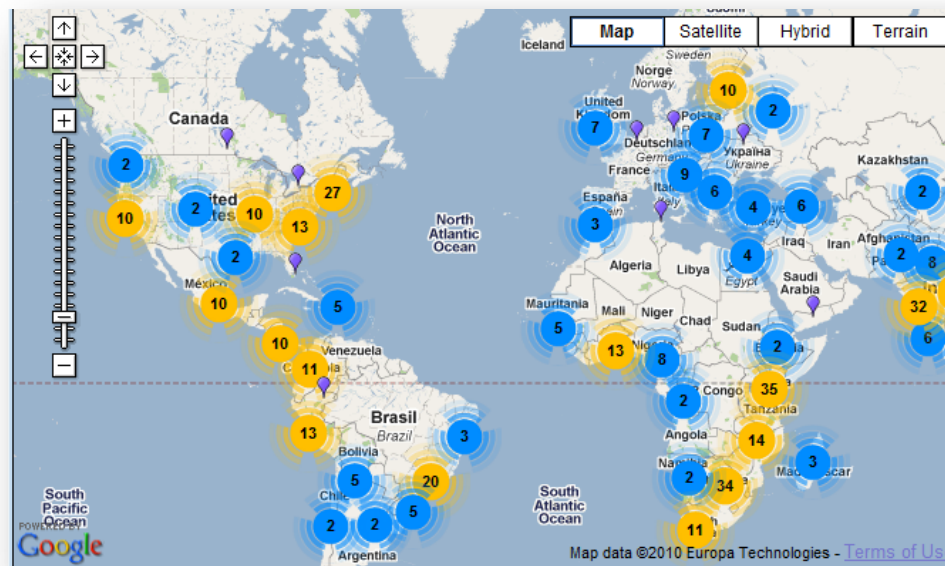
Global RePORT



v 1.0

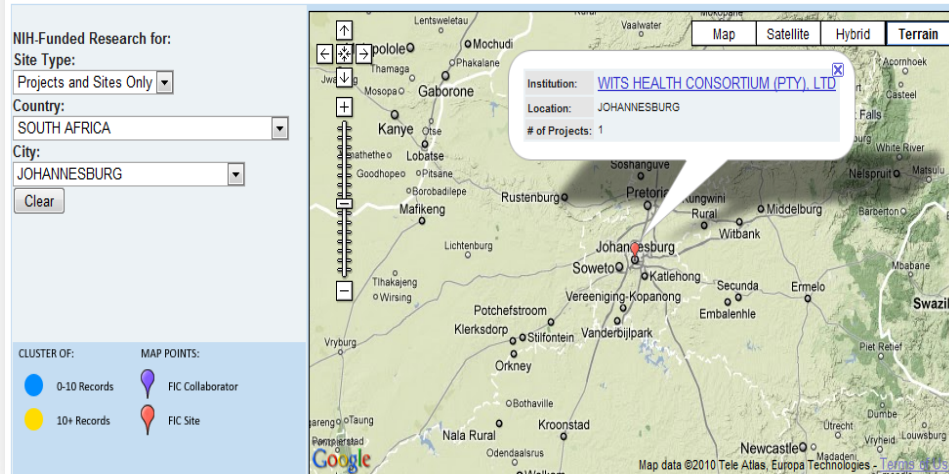
Improve reporting on NIH-support research conducted in foreign countries

- Country pages
- IC Global research pages
- GIS map interfaces
- Country fact sheets



Global RePORT: Mapping International NIH-Funded Research

NIH-Funded Research in SOUTH AFRICA







# THANK YOU

**This presentation was prepared by:**

James Onken, Ph.D., RePORT Program Manager (onkenj@od.nih.gov)

Sandeep Somaiya [C – NETE SOLUTIONS], RePORT Project Lead (somaiyas@od.nih.gov)

**NOTES:**

This image shows a single sheet of white paper with horizontal blue or grey ruling lines. A vertical margin line is present on the left side, creating a narrow left margin. The top-right corner of the paper is folded over, revealing a darker layer underneath. The entire sheet is set against a solid black background.