

Mapping the future of forests: an introduction to the Moabi crowdsourcing system

June 13<sup>th</sup>, 2011  
Leo Bottrill

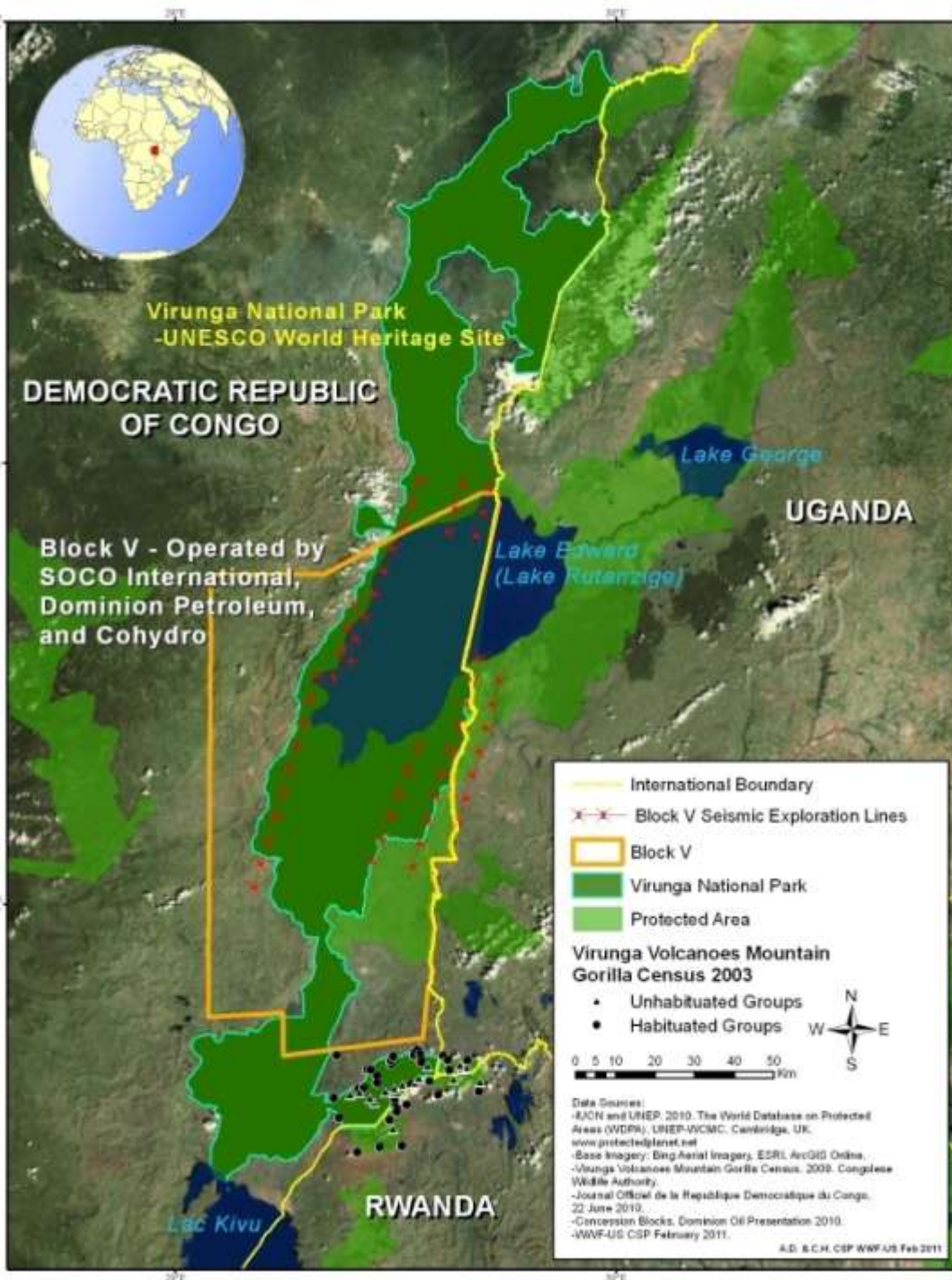


## What is Moabi?

A collaborative mapping system that builds a community of users to share, edit, and discuss spatial information

## Conservation context

- Virunga National Park, DRC
- Charcoal collection
- REDD+ Projects
- Oil and gas exploration



**What are these projects?**

**Where are they?**

**Who can help us?**

**What we need to know**

**When are they going start?**

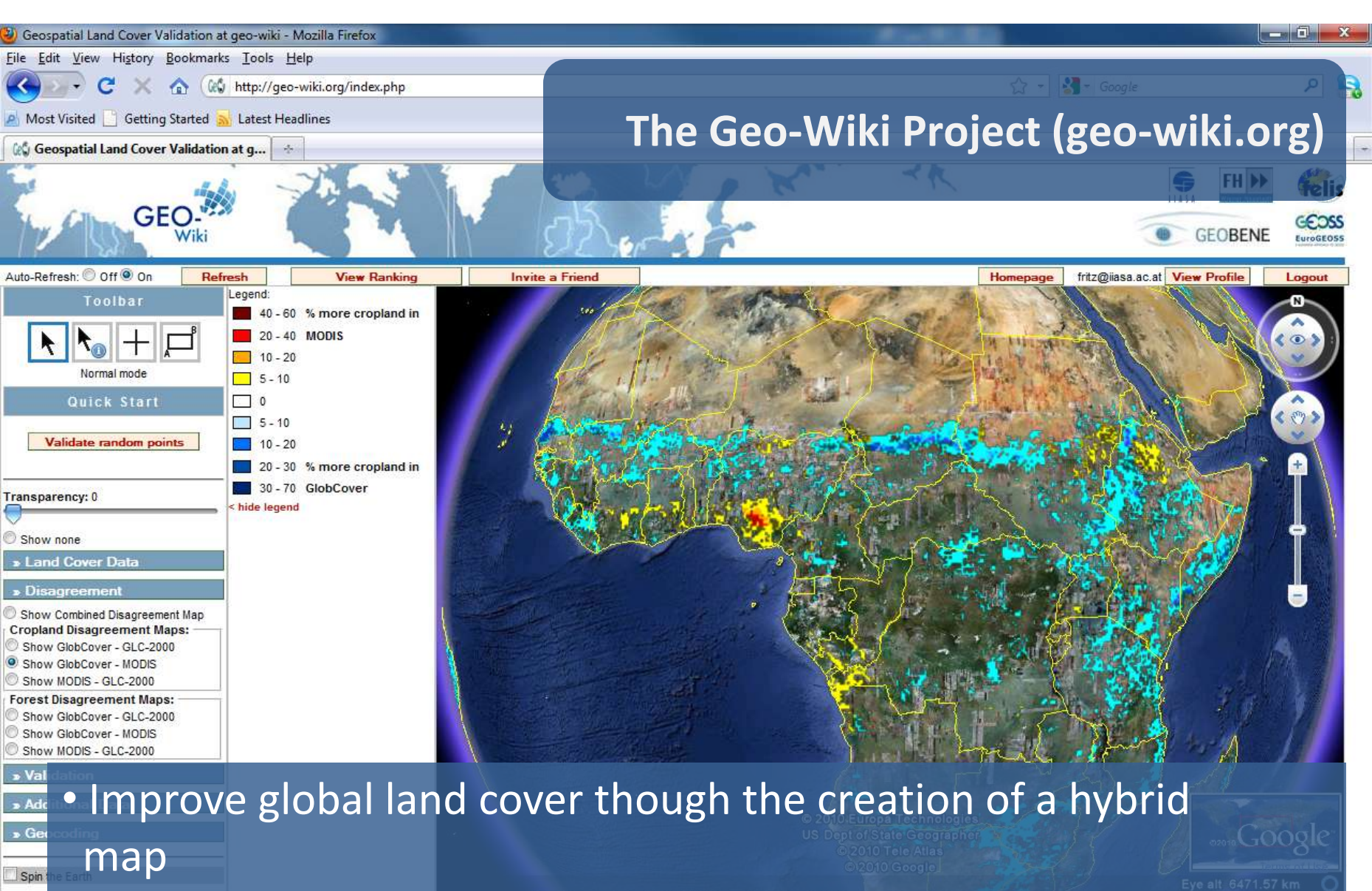
**Who is backing them?**

# Challenges in data collection

- Lack of coordination of organizations collecting data
- Use of closed systems
- Lack of capacity and resources
- Sensitive
- Proprietary
- Dynamic

# Why do we need the data

- Project future rates of deforestation
- Integrated conservation and development planning
- Climate adaptation



# The Geo-Wiki Project (geo-wiki.org)

- Improve global land cover through the creation of a hybrid map
- Providing a platform for people to use customized validation datasets to highlight discrepancies
- IIASA, IFPRI, VITO, JRC

**Website**

**Community**

**Crowd sourcing**



# Moabi RDC

Provide a open and transparent forum for civil society to inform REDD+ in the Democratic Republic of Congo

1. Review proposed REDD+ projects
2. Identify other land uses
3. Flag illegal REDD+ projects

## Limitations

- Limited internet access and cellphone coverage
- Lack of a culture of sharing
- Sustainable financing

# Demo

## Milestones

1. Launched in March 2011
2. Built partnerships
3. > 5000 projects ready to share

## Next Steps

1. Implement
2. Moabi 2.0

[rdc.moabi.org](http://rdc.moabi.org)

**Questions?**