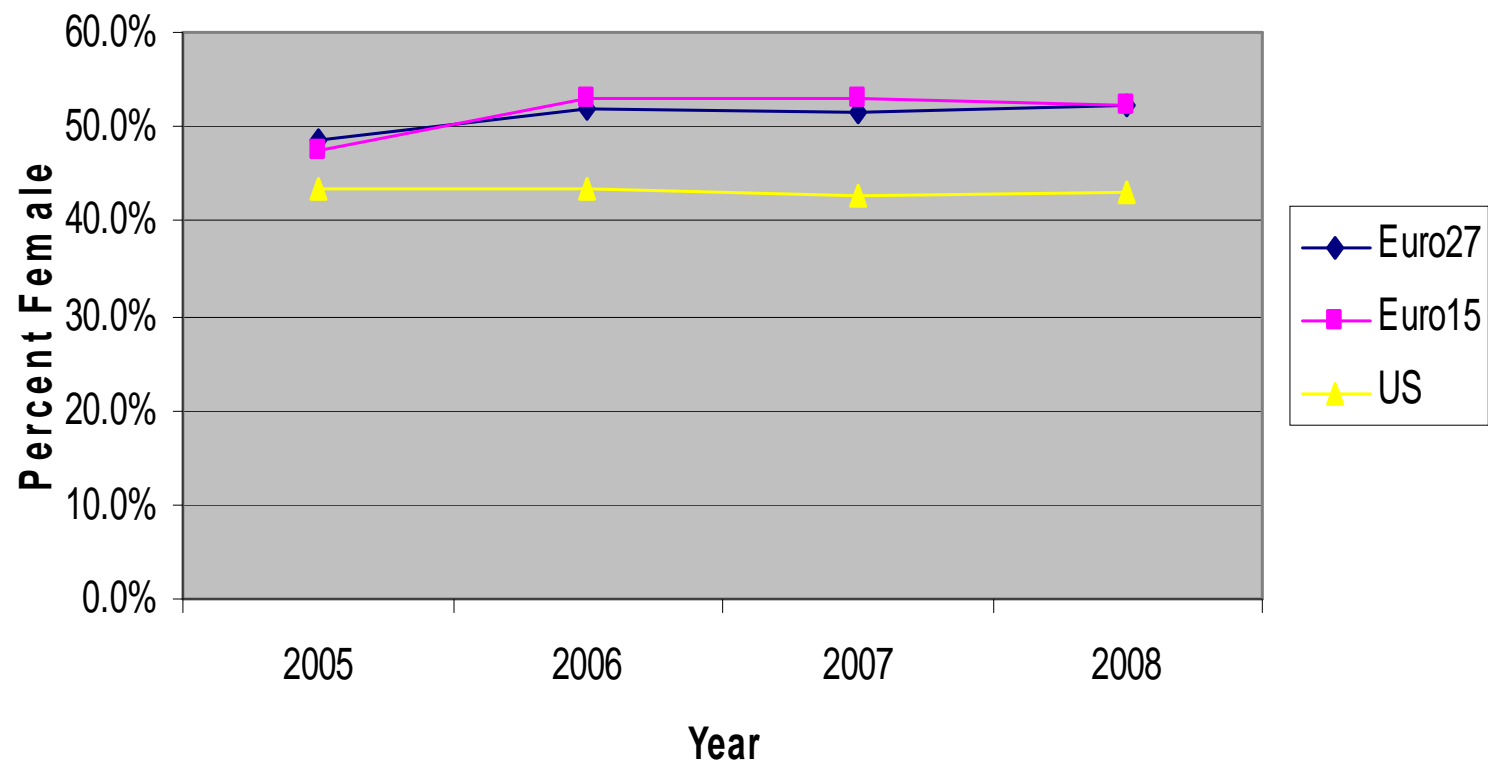
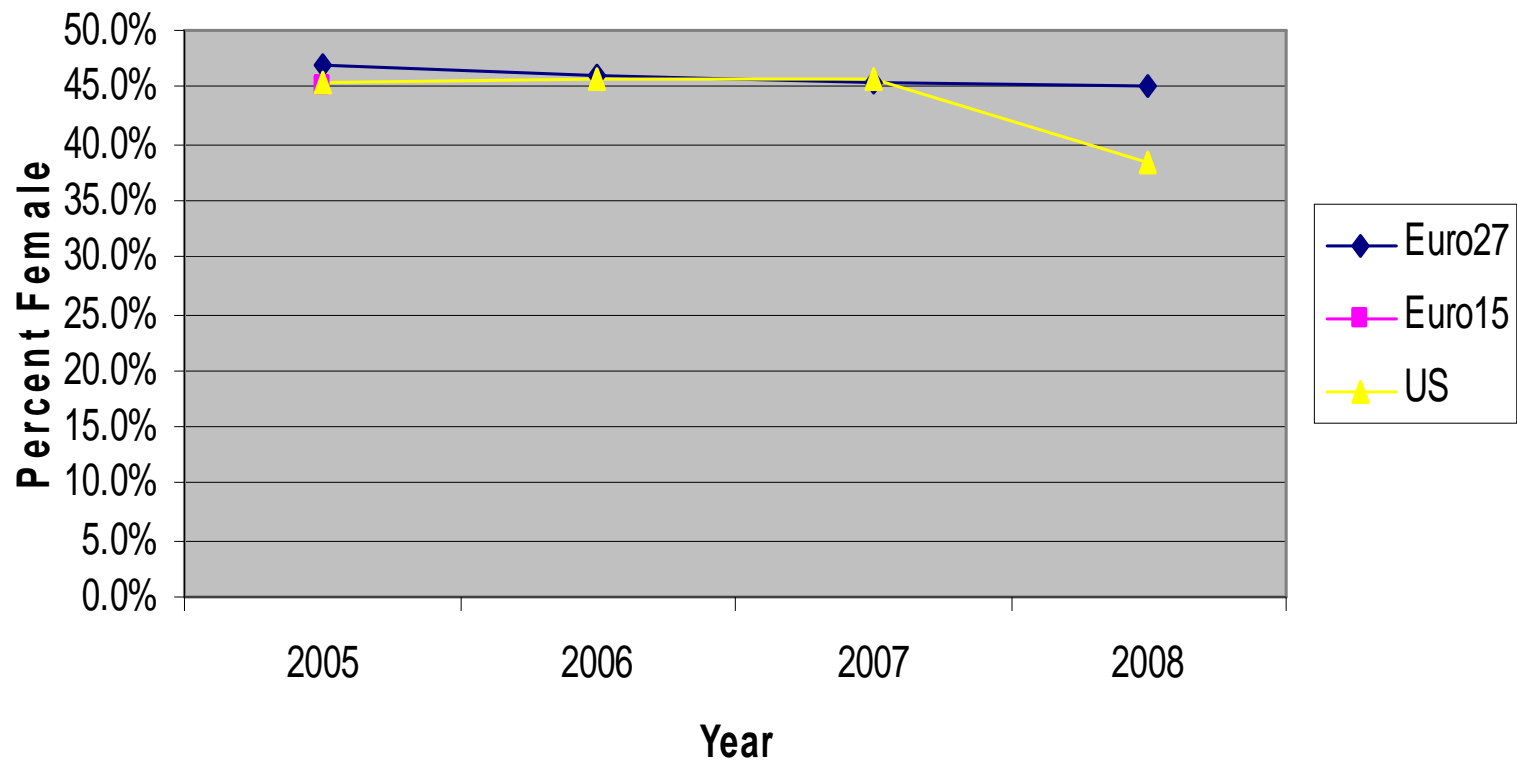


## Mathematics and Statistics Graduate Degrees



## Mathematics and Statistics Graduate Students



### Comparison of Math and Stat Students to Degrees

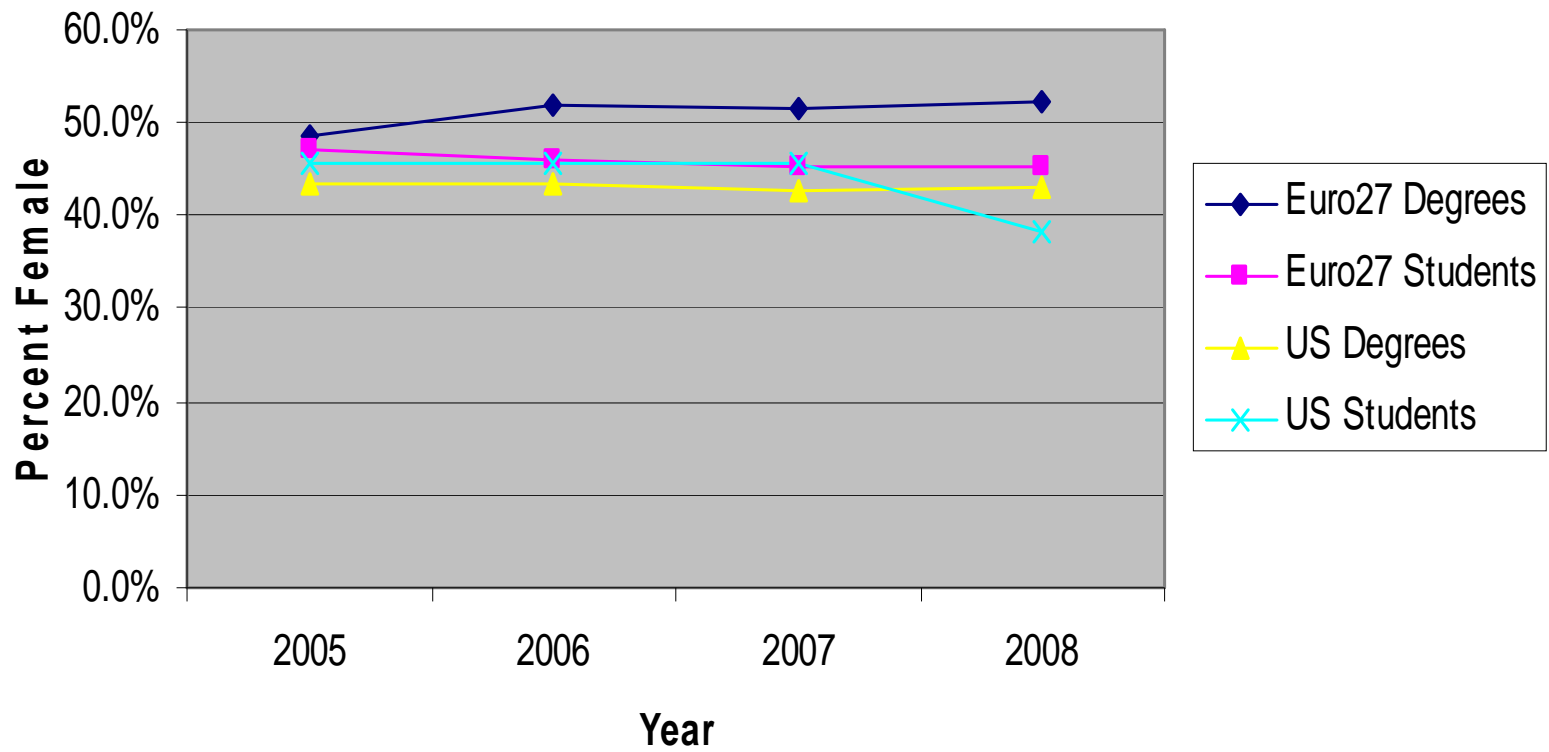
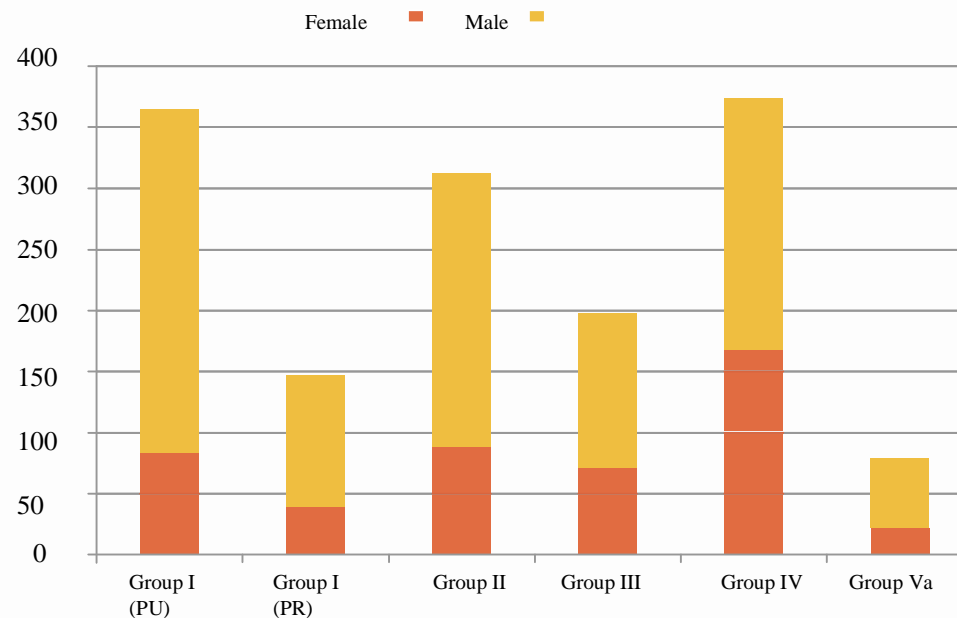


Figure D.1: Gender of Doctoral Recipients by Degree-Granting Department



Females account for 32% (472) of the 1,475 Ph.D.s, the same percentage reported in fall 2009 and 2008.

## Mathematics Faculty Counts and Percentage Female

	2002	2003	2004	2005	2006	2007	2008	2009
<b>Groups I, II, III, &amp; Va</b> Doctoral full-time faculty <b>Tenured/tenure-track</b> <i>Percentage female</i>	<b>5616</b> <i>10%</i>	<b>5559</b> <i>10%</i>	<b>5604</b> <i>11%</i>	<b>5686</b> <i>11%</i>	<b>5668</b> <i>12%</i>	<b>5709</b> <i>12%</i>	<b>5666</b> <i>13%</i>	<b>5834</b> <i>13%</i>
<b>Group M</b> Doctoral full-time faculty <b>Tenured/tenure-track</b> <i>Percentage female</i>	<b>3188</b> <i>22%</i>	<b>3005</b> <i>22%</i>	<b>3113</b> <i>23%</i>	<b>3351</b> <i>24%</i>	<b>3400</b> <i>25%</i>	<b>3325</b> <i>25%</i>	<b>3403</b> <i>26%</i>	<b>3208</b> <i>27%</i>
<b>Group B</b> Doctoral full-time faculty <b>Tenured/tenure-track</b> <i>Percentage female</i>	<b>5569</b> <i>23%</i>	<b>6172</b> <i>26%</i>	<b>5770</b> <i>25%</i>	<b>6875</b> <i>25%</i>	<b>6623</b> <i>27%</i>	<b>6427</b> <i>27%</i>	<b>6733</b> <i>25%</i>	<b>6914</b> <i>29%</i>