

# Partnership for Sustainable Communities -- The DOT/FTA Perspective and Region VI Examples

Peggy Crist, FTA Region VI  
January 18-19, 2011





*Livability means “being able to take your kids to school, go to work, see a doctor, drop by the grocery or post office, go out to dinner and a movie, and play with your kids at the park, all without having to get into your car.”*

*Secretary Ray LaHood, U.S. Department of Transportation*



-



# Livability at FTA

**FTA believes we have always been “all about livability”**

- All segments of the population deserve safe access to transportation services for work, housing, medical services, schools, shopping and other essential activities
- Transit provides the critical ‘lifeline’ connecting people to these services
- Transit needs to be as convenient and affordable as possible, particularly for persons with mobility limitations due to age, disability, or economic situation



# Roles in the Partnership



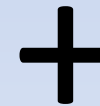
## Housing and Urban Development

- Community Development Block Grants
- Regional Planning
- Local Challenge
- Affordable Housing Programs



## Department of Transportation

- TIGER Grants
- FTA Programs
- FHWA Flex Funding
- United We Ride
- FHWA Livability Efforts
- State/Metro Planning
- Railroad Infrastructure



**U.S.  
Department of  
Agriculture**

## Environmental Protection Agency

- Brownfields Restoration
- Smart Growth Technical Assistance
- Water Infrastructure Funds

- Rural Efforts



## FTA - Federal Role Is Primarily Funding

- FTA is part of the US DOT with a mission to support public transit through grant programs and policies.

- FTA ~ \$10 Billion per year  
(FHWA ~ \$41 Billion per year)

- Programs are federally assisted – locally administered.



# Partnership for Sustainable Communities: FTA's Role



## Infrastructure Investment

- Urban/Rural Formula Programs
- Specialized Programs
  - JARC
  - New Freedom 5310
- New Starts
- Discretionary Bus + Rail
- TIGGER

## Capacity Building

- Peer Exchanges
- Technical Assistance
- Demonstrations
- Case Studies and Pilots

## Policy / Guidance

- New Starts
- Joint Development
- Bike/Ped Access to Transit
- Flexible Funding for Transit
- Environmental Management

## Research

- Affordable Housing Near Transit
- Transit Oriented Development
- Climate Change Impacts
- Access to Transit





# REGION 6 SHOWCASE COMMUNITIES UNDER PSC

Port Arthur, TX  
Austin, TX  
Little Rock, AR







## PORT ARTHUR SHOWCASE COMMUNITY:

Improve economic, social and quality of life of Westside residents

### PSC ACTIONS NEEDED:

- Relocation of Carver Terrace Public Housing residents
- Expansion of bus service to future Westside health clinic
- Infrastructure improvements for economic development – future convenience store



## AUSTIN SHOWCASE COMMUNITY:

Saltillo Plaza-Transit Oriented Development Connecting East Austin Latino Community to Downtown

### PSC ACTIONS NEEDED:

- ☐ Affordable Housing Dev. Partners
- ☐ Additional Env. Assess. & Cleanup
- ☐ Railroad Tracks Relocation
- ☐ Transit User Access

Improvements

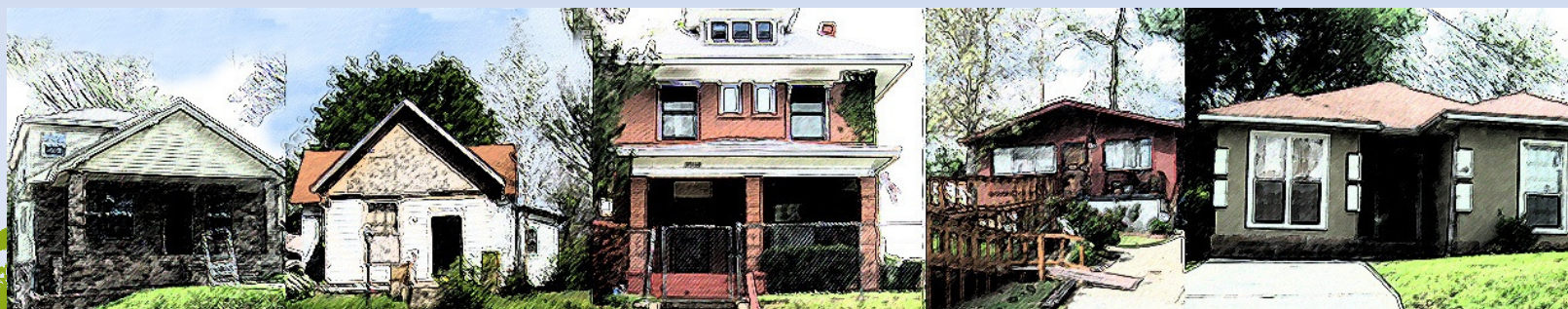


## LITTLE ROCK SHOWCASE COMMUNITY:

Sunset Terrace Community Development - Housing Quality, Choice, & Architectural Character;  
Education/Academic Achievement Access; Financial Opportunities; and Conditions  
Improvement of Health Services Access

### PSC ACTIONS NEEDED:

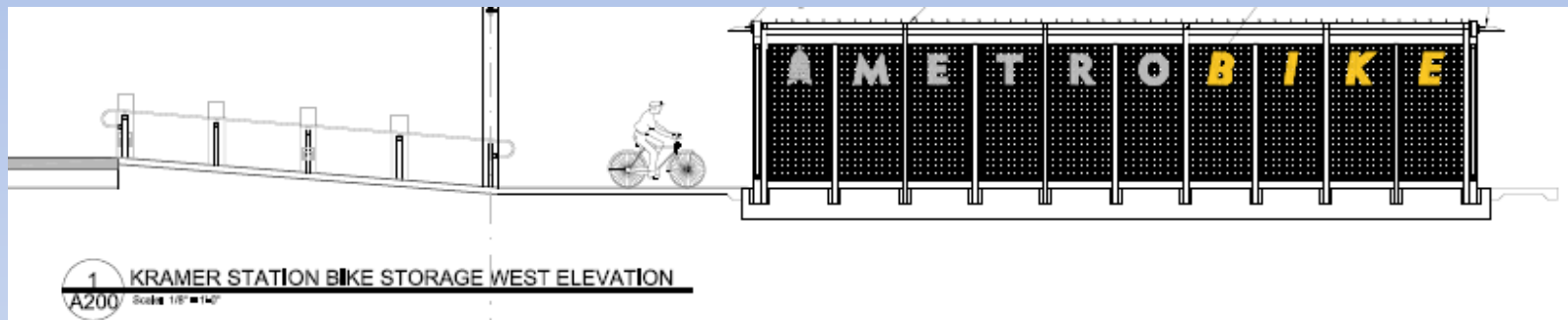
- ☐ New/quality affordable homes
- ☐ Home improvements
- ☐ Sustainable Reuse/Use Fairgrounds
- ☐ Env. Site Assess. & Cleanup
- ☐ Congestion Mitigation



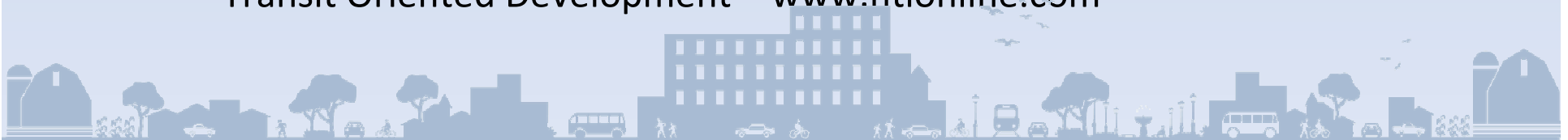
# FTA Livability Resource Examples



- Funding
  - Bus Livability Program



- Technical Assistance
  - National Transit Oriented Development Database
    - <http://toddata.cnt.org/>
  - Center for Transit Oriented Development – Reconnecting America
    - <http://www.ctod.org/portal/>
  - National Transit Institute – Courses on Land Use/Transportation and Transit Oriented Development – [www.ntionline.com](http://www.ntionline.com)





# Additional Resources



<http://www.sustainablecommunities.gov>

