



# STAR Community Index

---



Pathways to Urban  
Sustainability  
Houston, Texas  
January 19, 2012

# ICLEI's 5 Milestones for Sustainability



## One example for Milestone Two

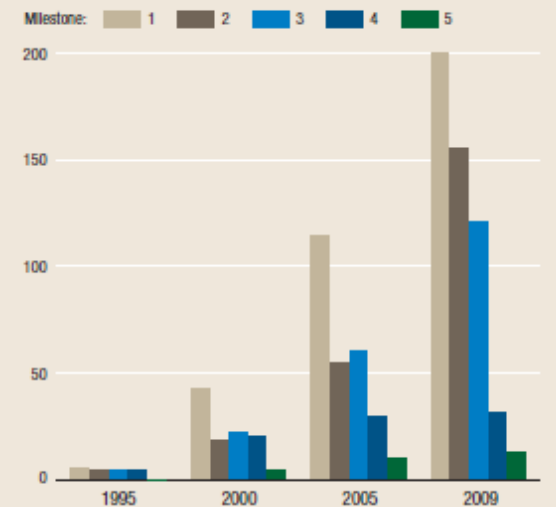
**Emissions reduction projected by 2020:**

▼ 1.36 billion metric tons CO<sub>2</sub>e  
(= 25 million passenger vehicles for 10 years)

**Emissions reduction projected by 2050:**

▼ **6.8 billion metric tons CO<sub>2</sub>e**  
(= 37 coal-fired power plants for 40 years)

### Growth in Milestone Attainment over 15 Years of Local Climate Protection





# STAR Community Index

STAR is a ground-breaking measurement and rating system for sustainability performance at the community scale.

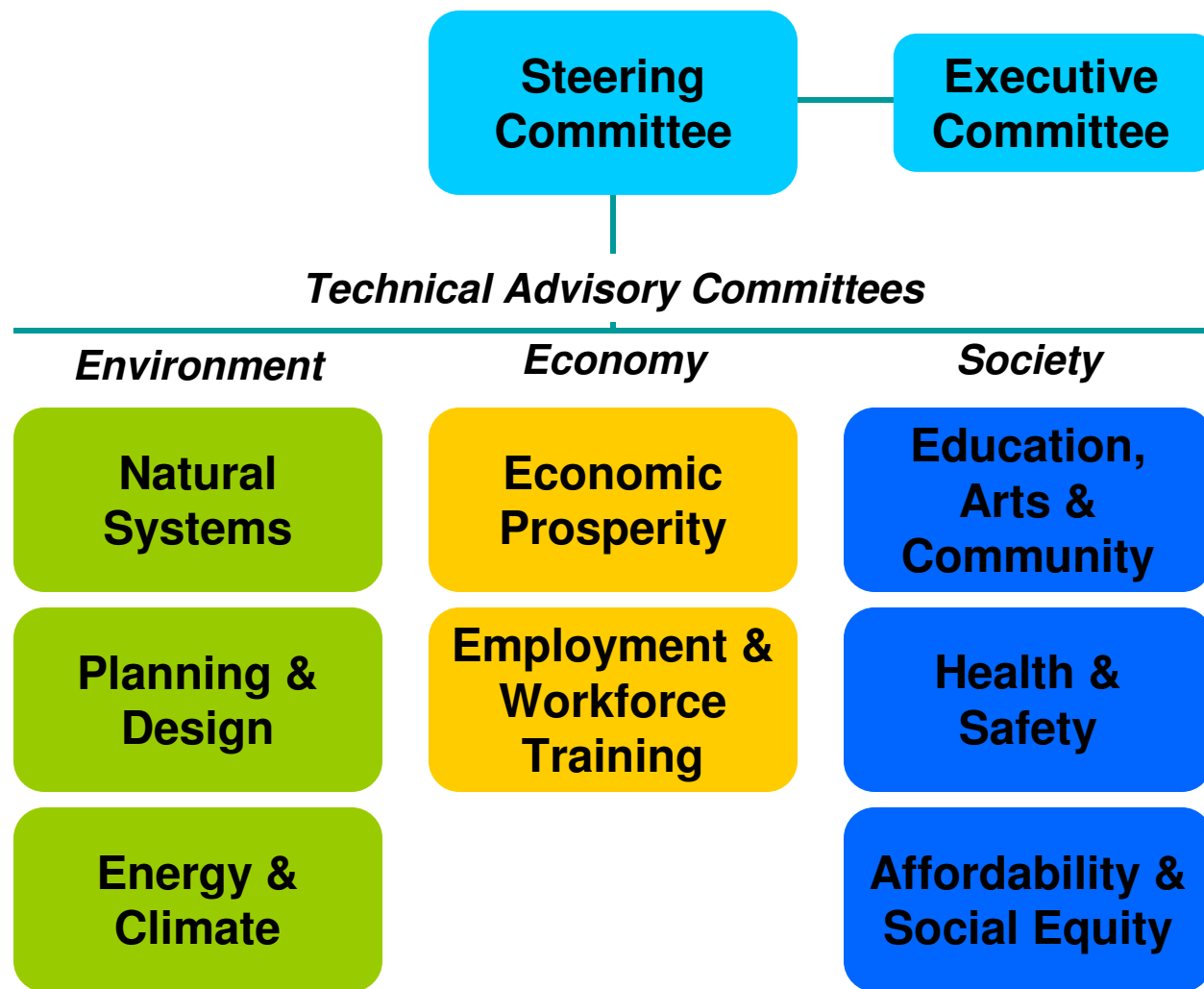
- Provides a national standard for sustainability
- Consensus-based rating system
- Technology: Sustainability planning and performance management tool

## Partners





# Stakeholder Process





# STAR Guiding Principles

---

- Think—and act—systemically
- Instill resiliency
- Foster innovation
- Redefine progress
- Live within means
- Cultivate collaboration
- Ensure equity
- Embrace diversity
- Inspire leadership
- Continuously improve





# Criteria for Validation Measures

- Relevant
- Feasible
- Timely
- Useful
- Systemic
- Reliable
- Valid

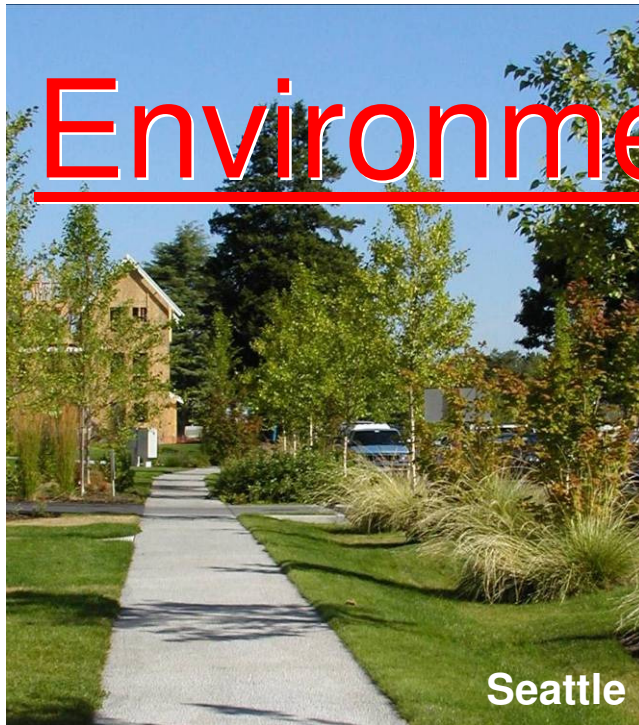
**Review process in place that includes:**

- Technical Advisory Committees
- Data Committee
- Beta Communities
- Steering Committee

*Indicators  
must be  
simultaneously  
meaningful in two  
different domains:  
that of science and  
that of policy.*

- Wouter Biesiot,  
Indicators and Information  
Systems for Sustainable  
Development

# Environment



Seattle

## Natural Systems



Boulder

## Planning & Design



Albuquerque

## Energy & Climate

Natural Ecosystems	Comprehensive Planning	Greenhouse Gas Mitigation
Green Infrastructure	Transportation & Mobility	Energy Use
Watershed & Land Use	Compact & Complete Communities	Energy Supply
Waste Minimization	Housing	Energy Smart Buildings
Water Quality & Supply	Interconnected Land Use	Climate Adaptation
Drinking Water Quality	Historic Preservation & Cultural Heritage	Alternative Fuels & Infrastructure
Biodiversity & Invasive Species	Public Engagement & Participation	Industrial Sector Energy Use
Resource Lands	Land Conservation	Agricultural Climate Impacts
Agriculture & Aquaculture	Code Barriers	
Ambient Noise & Light	Public Spaces	
	Excellence in Design	
	Design for People	





# Economy

## Economic Prosperity

Enterprise Support
Industry Sector Development+Revitalization
Market Development
Community-Based Economic Development
Economic Localization
Land Redevelopment & Revitalization
Food System

## Employment & Workforce Training

Employment Opportunity
Employment Benefits
Labor Rights
Living Wages
Supportive Workplaces
Workplace Learning & Career Paths
Workforce Development Comprehensive Plan
Workforce Training
Resources for Success

***“What if... the economy worked for people and communities, and not the other way around”.***





## Education, Arts & Community

Education Opportunities
Education Environments
School-Community Engagement
Ecological Literacy
Arts & Culture
Arts & Cultural Civic Support
Cultural Practices
Neighborhood Vitality
Civic Literacy + Engagement
Financial Literacy
Cultural Practices

## Health & Safety

Health System
Health & Safety Literacy
Workplace Health & Safety
Food Access & Nutrition
Drinking Water Quality
Outdoor Air Quality
Indoor Air Quality
Toxics Reduction
Natural & Human Hazards
Emergency Prevention & Response
Safe Communities
Active Living & Recreation

## Affordability & Social Equity

Government Transparency
Revenue Generation
Public Expenditures & Financial Investment
Infrastructure Investment
Social Cohesion
Human Services
Poverty Prevention & Alleviation
Civil & Human Rights
Social & Cultural Diversity
Environmental Justice
Equity Literacy
Adjudication & Restorative Justice
Community Empowerment
Equity Assessment & Planning

# Validation Measure Example

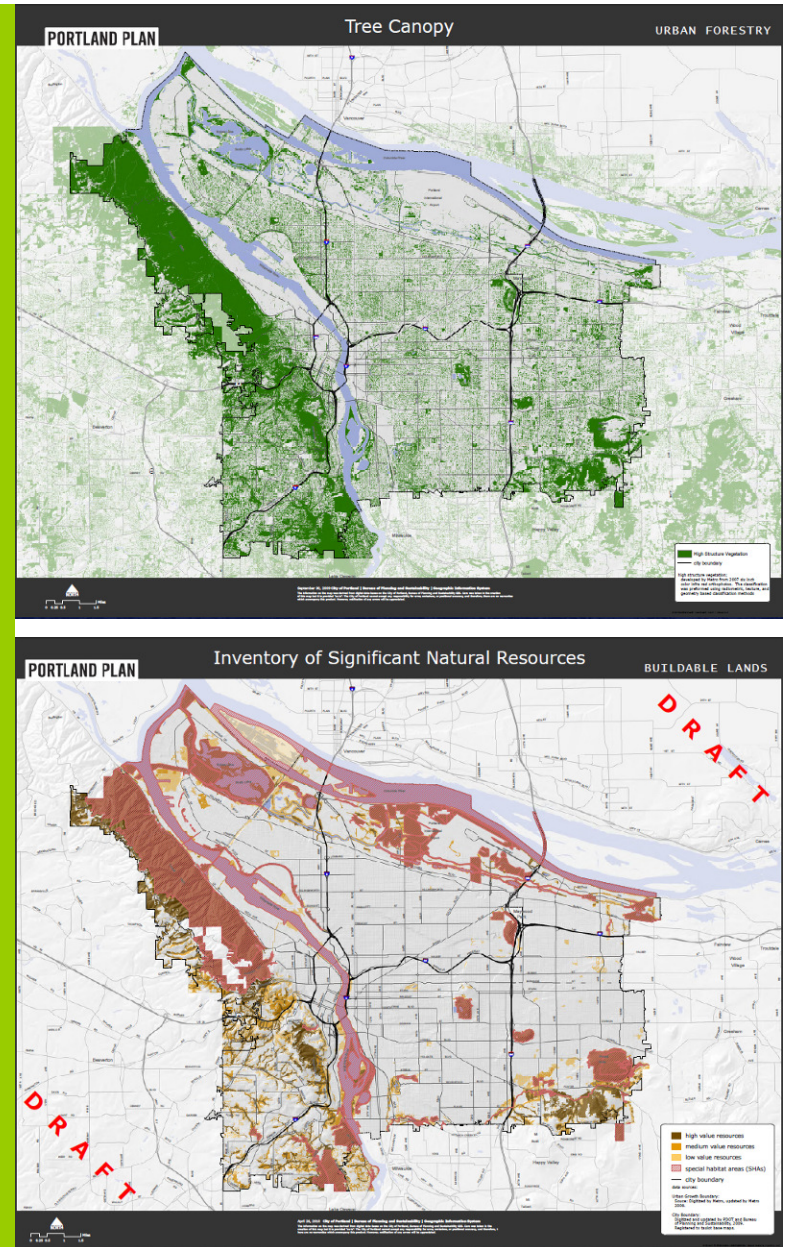
## GOAL AREA: Nature

### Validation Measure:

A. Conduct Natural Systems Inventory of existing conditions, including maps of:

- Watersheds, habitat, ecosystems, conservation lands, key species
- Geology
- Natural assets (e.g. tree canopy)
- Environmentally critical areas
- Parks and open space

B. Establish conservation & restoration targets & develop Natural Systems Plan





# Validation Measure Example

## GOAL AREA: Greenhouse Gas Mitigation

### Validation Measure:

A. Complete the 5 Milestones for Climate Protection (local government operations and community-wide emissions):

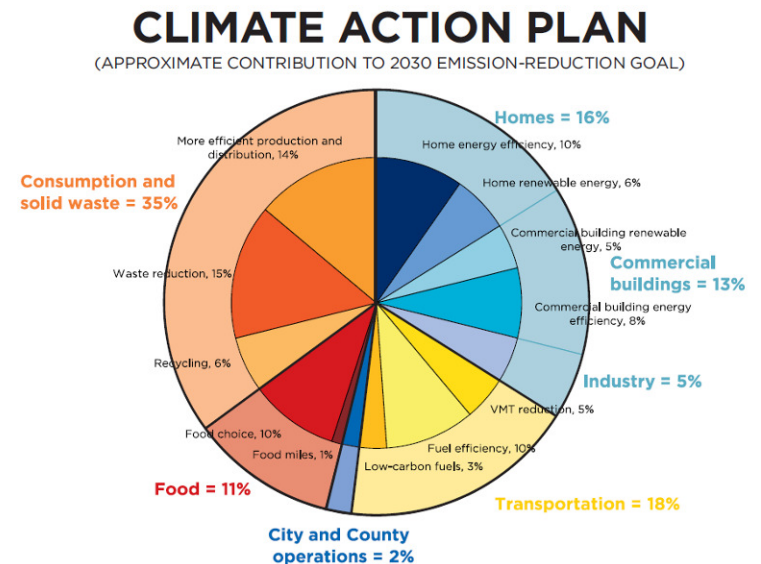
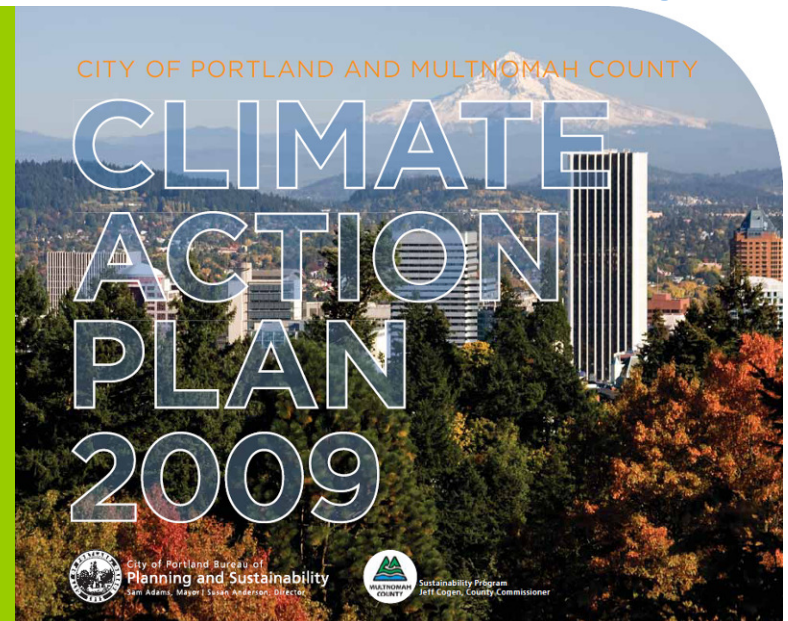
#1: Conduct a GHG emissions inventory

#2: Adopt reduction target

#3: Develop Climate Action Plan

#4: Implement the Plan

#5: Measure Progress & Report Results



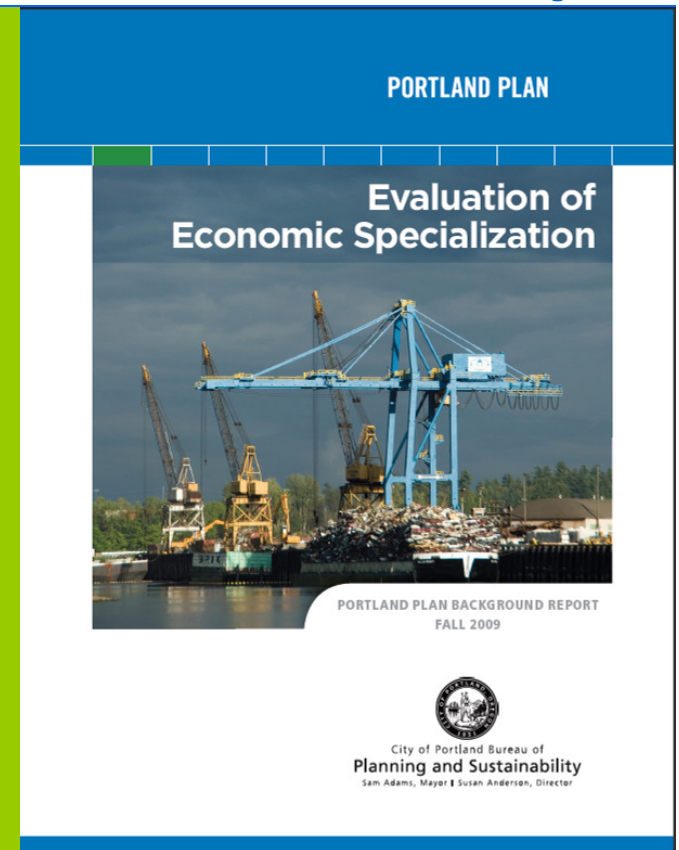


# Validation Measure Example

## GOAL AREA: Industry Sector Economic Development & Revitalization

### Validation Measure:

- A. Conduct and make publicly available an Industry Sector Economic and Revitalization Assessment
- B. Develop Industry Sector Economic and Revitalization Plan
- C. Implement & show progress toward performance metrics:
  - Green jobs, living wage jobs, employment, other locally defined benchmarks



The Portland Plan addresses growth in key industry sectors, green jobs and in sustainable business practices, both areas in which Portland is already recognized as a leader.

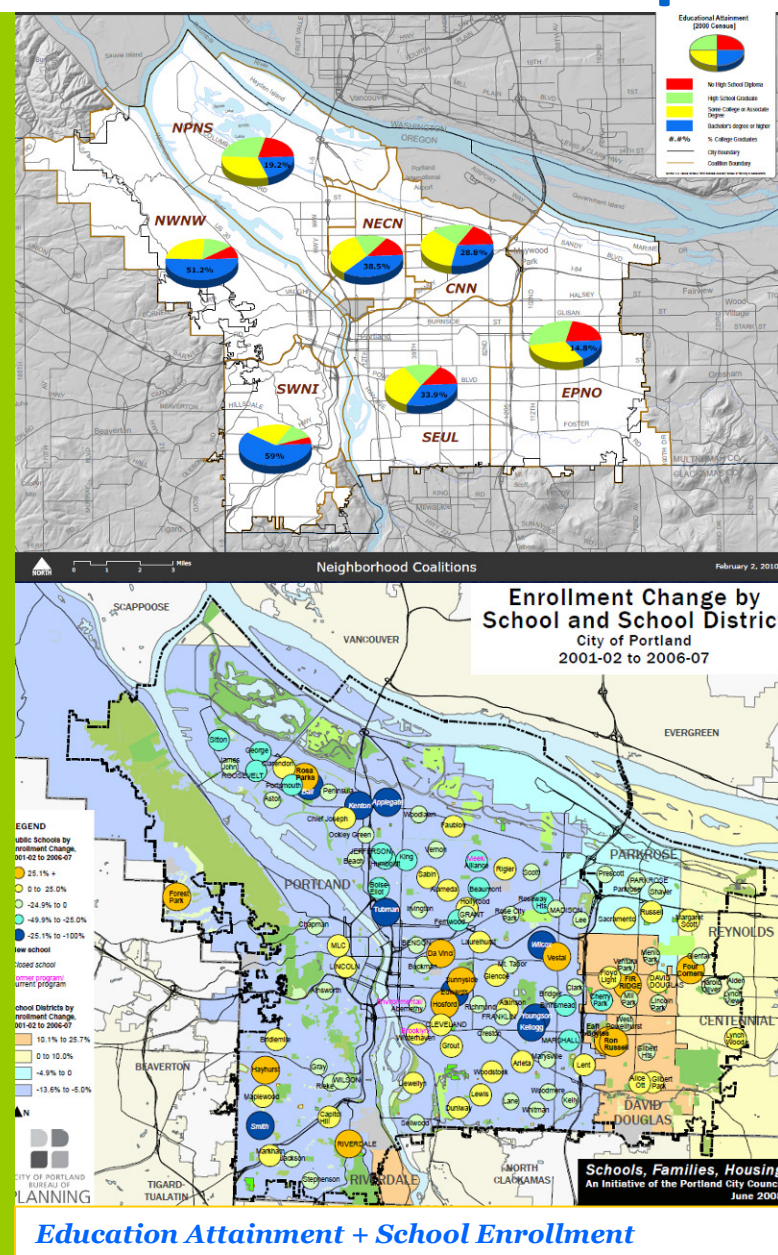
# Validation Measure Example

## GOAL AREA: Educational Opportunities

- Validation Measure:**

A. Four-year adjusted cohort high school graduation rate for all schools within the jurisdiction meets the performance levels listed below and is uniformly applied to all student groups.

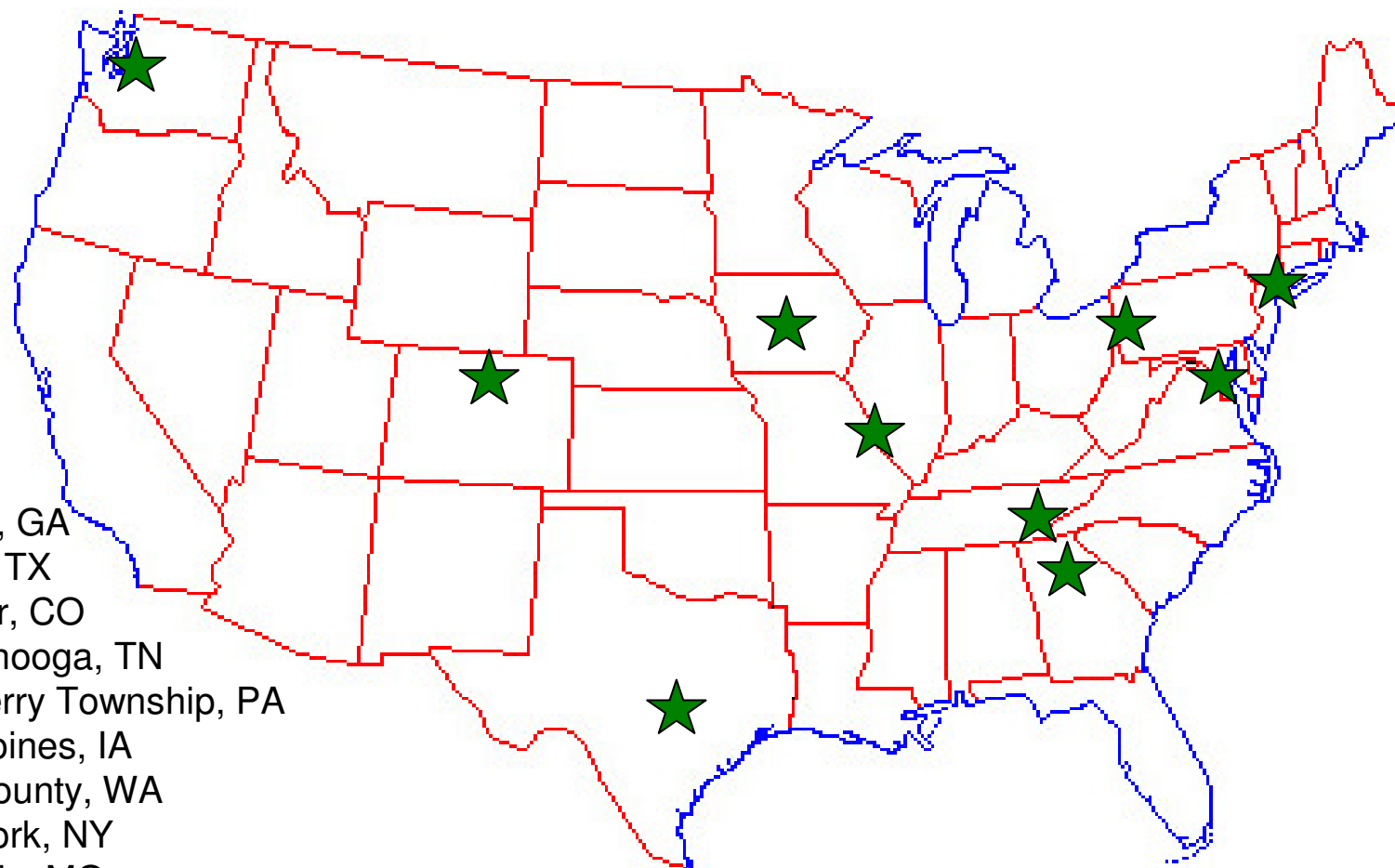
Level	Jurisdictional Average	Individual School Minimum	Student Group Minimum
1	80	75	70
2	85	80	75
3	90	85	85





# STAR Beta Communities

---



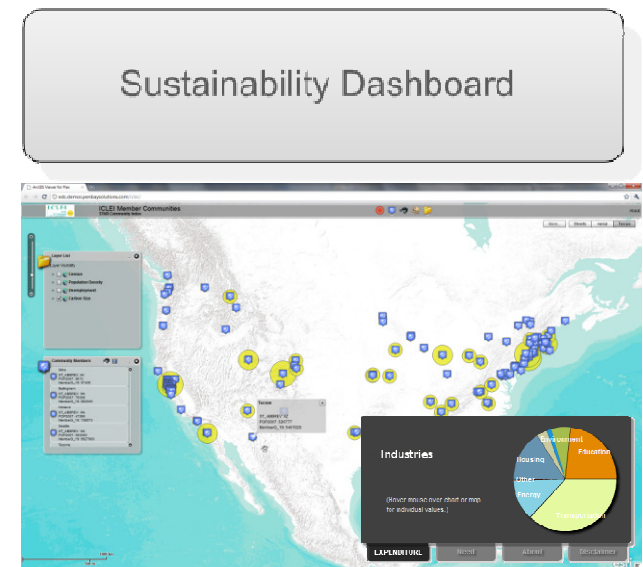
- Atlanta, GA
- Austin, TX
- Boulder, CO
- Chattanooga, TN
- Cranberry Township, PA
- Des Moines, IA
- King County, WA
- New York, NY
- St. Louis, MO
- Washington, DC





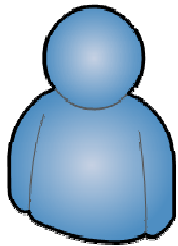
# The STAR Online Platform

- Leading tool for sustainability planning and performance management
- Easy to use and maintain
- Integrated into local government management functions and reporting – used throughout the government
- Increases transparency
- Enables collaboration and sharing of best practices
- Leverages geo-spatial technology to report on sustainability metrics
- Central repository for local sustainability actions
- Leverages commonly collected data



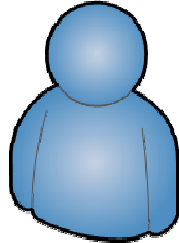


# Process



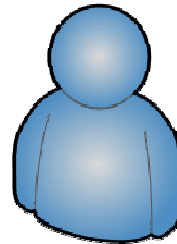
## Sustainability Office

- Register a STAR community
- Select goals
- Manage goals
- Manage data
- Request rating
- Report on progress
- Report on aggregate performance
- Purchase STAR resources
- Publish to sustainability dashboard



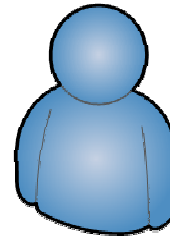
## Local Government Staff

- Support the baseline assessment
- Collaborate on goals / planning
- Contribute data
- Provide GIS data



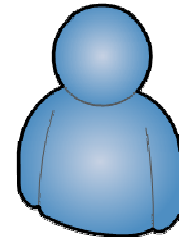
## GIS Specialist

- Support the baseline assessment
- Produce cartographic deliverables
- Use templates
- Manage spatial data publishing
- Support goal planning process



## ICLEI Staff / Verifier

- Manage registered communities
- Review rating/credit requests
- Financial management
- Aggregate reporting
- Publish to STAR sustainability dashboard



## Public

- sustainability dashboard
- Submit feedback



**Thank you!**

**Patrice “Pete” Parsons  
ICLEI**

**Director of External  
Affairs**

**832-393-0969 off**

**210-722-7270 cell**

**[Patrice.parsons@iclei.org](mailto:Patrice.parsons@iclei.org)**