



## Measuring Sustainability Performance

January 19<sup>th</sup>, 2011

**Pathways to Urban Sustainability Workshop**

**Bruce Wilcoxon**

Director, Climate Change



**Exploration & Production**



**Midstream**



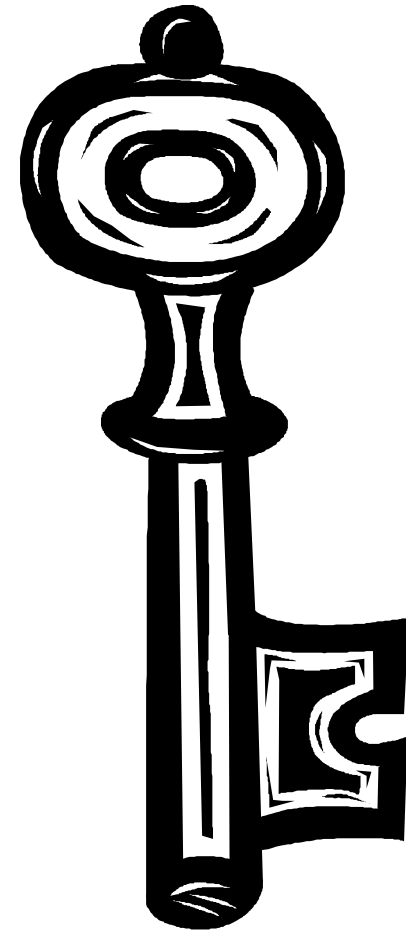
**Refining & Marketing**



**Chemicals**



- **Aligned with Sustainability Program**
- **Not a Trivial Exercise**
- **Integrated Feedback**





# Programs that Impact Performance

---



**Company Values**



**Philanthropy**



**Regulatory Compliance**



**Sustainable Development**



- 
- Are we producing energy in a cost-competitive manner?
  - Are we able to grow our business?
  - Are we identifying and managing risks?
  - Are we identifying and capitalizing on new opportunities?
  - Are we providing a fair return to shareholders?

**Environmental and Social Performance Increasingly Critical to Success**

- Organizational complexity
- Resource the effort
- Buy-in and commitment
- Measuring “Soft” impacts
- Time frame
- Considering trade-offs
- Stakeholder expectations
- Communicating results



**Integrated Feedback rather than Simple Metrics**



# Sustainable Development Feedback

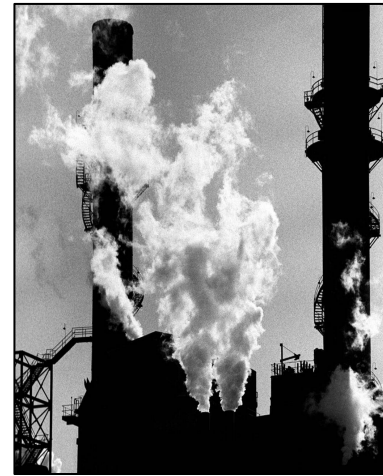
**Business Performance**



**Planning and Processes**



**HSE Metrics**



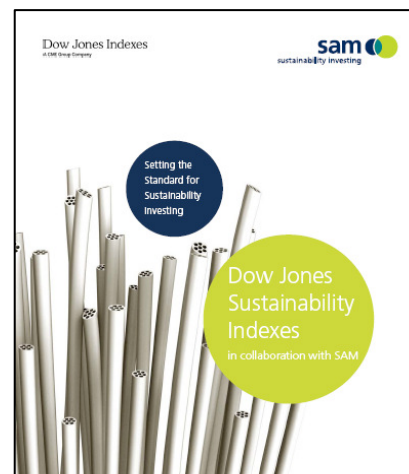
**SD Goals**



**Benchmarking**



**SD Ratings**



**Stakeholder Engagement**

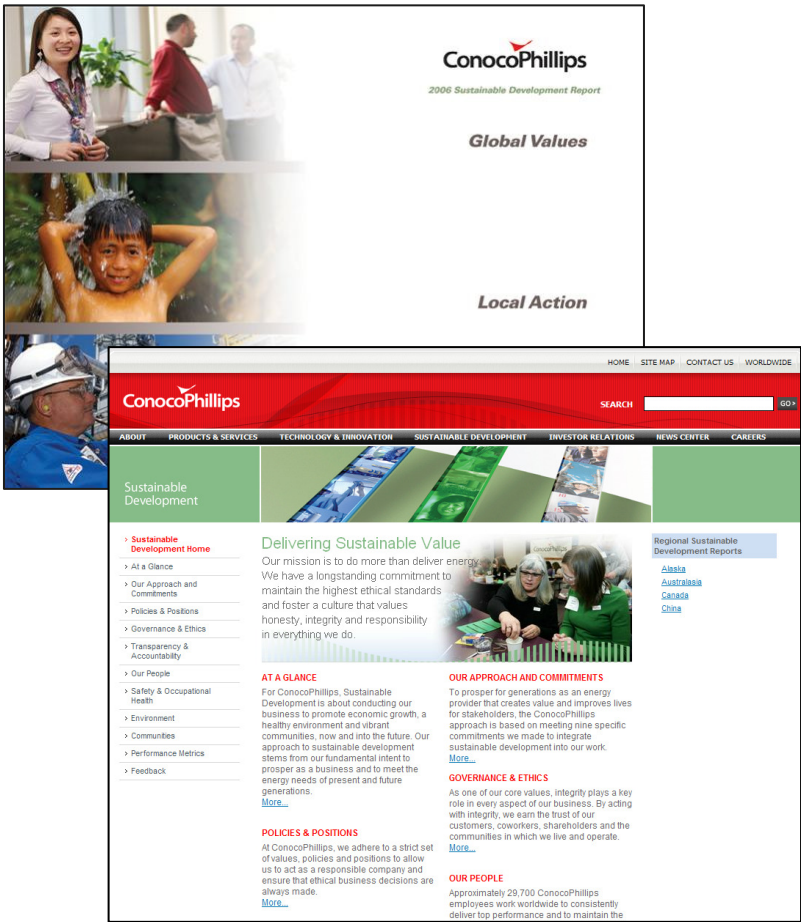


**Activism**

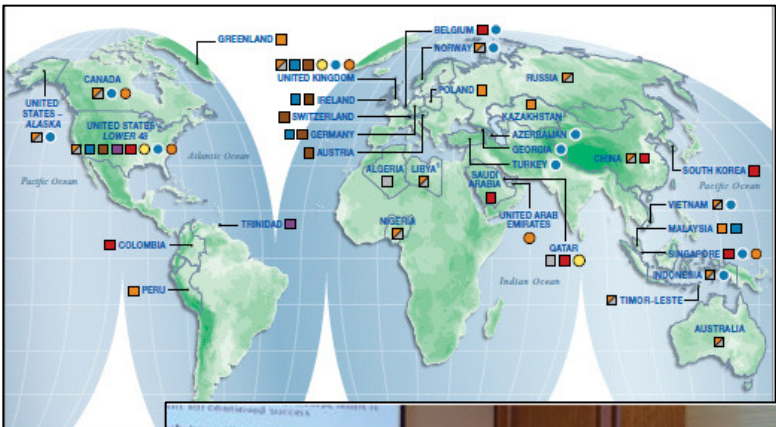




# Communicating Performance



EXTERNAL



INTERNAL

- **Aligned with Sustainability Program**
- **Not a Trivial Exercise**
- **Integrated Feedback**

