



STARMETRICS

May, 2012

David W. Robinson, Ph.D.,
Professor &
Executive Vice Provost, OHSU

What is STAR METRICS?

- STAR METRICS - Science and Technology for America's Reinvestment: Measuring the Effect of Research on Innovation, Competitiveness and Science, is a multi-agency venture led by the National Institutes of Health, the National Science Foundation (NSF) and the White House Office of Science and Technology Policy (OSTP).
- The STAR METRICS project is a partnership between science agencies and research institutions to **document the outcomes of science investments to the public**. The benefits of STAR METRICS are that a common empirical infrastructure will be available to all recipients of federal funding and science agencies to quickly respond to State, Congressional and OMB requests. It is critical that this effort takes a bottom up approach that is domain specific, generalizable and replicable

An Evolving Project

- **Level I:** Who is employed by science funding?

- Current jobs
- Future workforce

- **Level II:** What are the results of science?

- scientific knowledge (such as publications and citations..)
- economic growth (through patents, firm start ups and other measures...)
- workforce outcomes (through student mobility and employment..)
- social outcomes (such as health and environment...)

Level I: The 14 data elements requested

Description	Element ID	Item	Data Source	Unit of Analysis	Purpose
Information on Scientists and Awards	1	De-identified Employee ID #	University	Individual	Job Metrics
	2	Federal Award ID #		Award	
	3	University Award ID #		Award	
	4	Overhead charged		Award	
	5	Occupational Classification		Individual	
	6	Proportion of time allocated to award		Individual	
	7	FTE status		Individual	
Information on Overhead	8	Proportion of overhead associated with salaries (from overhead cost proposal)	University	University	Job Metrics
Payments to vendors	2	Federal Award ID #	University	Award	Secondary Economic Impact
	9	University Award ID #		Award	
	10	Duns #		Vendor	
	11	Amount of Contract		Vendor	
Subcontracts and subawards	2	Federal Award ID #	University	Award	Secondary Economic Impact
	12	University Award ID #		Award	
	13	Duns #		Subcontractor	
	14	Amount of Contract		Subcontractor	

Upload Data

Firefox

STAR METRICS

https://www.starmetrics.nih.gov

Google

★★★★★

STAR METRICS
A Federal Collaboration with Research Institutions

*Science and Technology for America's Reinvestment
Measuring the Effects of Research on Innovation, Competitiveness and Science*

Welcome, robinsda@ohsu.edu [Log Off](#) Oregon Health & Science University

HOME PARTICIPATE NEWS RESOURCES FAQs CONTACT US DASHBOARD UPLOAD

HOW TO GET STARTED

Get started by visiting the [Participation Guide](#). There you will find:

1. [About STAR METRICS](#)
2. [Getting Started](#)
3. [Employment Calculations](#)

IMPORTANT LINKS

Download these important documents.

Participation Agreement ([doc](#))
This agreement must be signed in order to participate. See the [Resources](#) page for instructions on sending this document.

Participation Guide ([pdf](#) | [doc](#))

Data Dictionary ([pdf](#) | [xls](#))

Technical Specifications ([pdf](#) | [doc](#))

JOIN INCOMMON

Simplify your log on process by joining InCommon and becoming federated with the NIH.

WHAT IS STAR METRICS?

STAR METRICS - Science and Technology for America's Reinvestment: Measuring the Effect of Research on Innovation, Competitiveness and Science, is a multi-agency venture led by the National Institutes of Health, the National Science Foundation (NSF) and the White House Office of Science and Technology Policy (OSTP).

The STAR METRICS project is a partnership between science agencies and research institutions to document the outcomes of science investments to the public. The benefits of STAR METRICS are that a common empirical infrastructure will be available to all recipients of federal funding and science agencies to quickly respond to State, Congressional and OMB requests. It is critical that this effort takes a bottom up approach that is domain specific, generalizable and replicable.

"It is essential to document with solid evidence the returns our Nation is obtaining from its investment in research and development. STAR METRICS is an important element of doing just that."

- John P. Holdren
Assistant to the President for Science and Technology and
Director of the White House Office of Science and Technology Policy
June 1, 2010.

See [Press Release](#) (pdf) May 28, 2010.

Participants may join Level I at any time however they must be engaged in Level I to participate in Level II. For more information about how to join STAR METRICS, please go to the Participation Guide. A brief description of the two levels of the STAR METRICS project is as follows:

- **Level I:** Developing uniform, auditable and standardized measures of the impact of science spending (ARRA and non-ARRA) on job creation, using data from research institutions' existing database records. No personally identifiable information (PII) is collected in Level I.

Quarterly Report

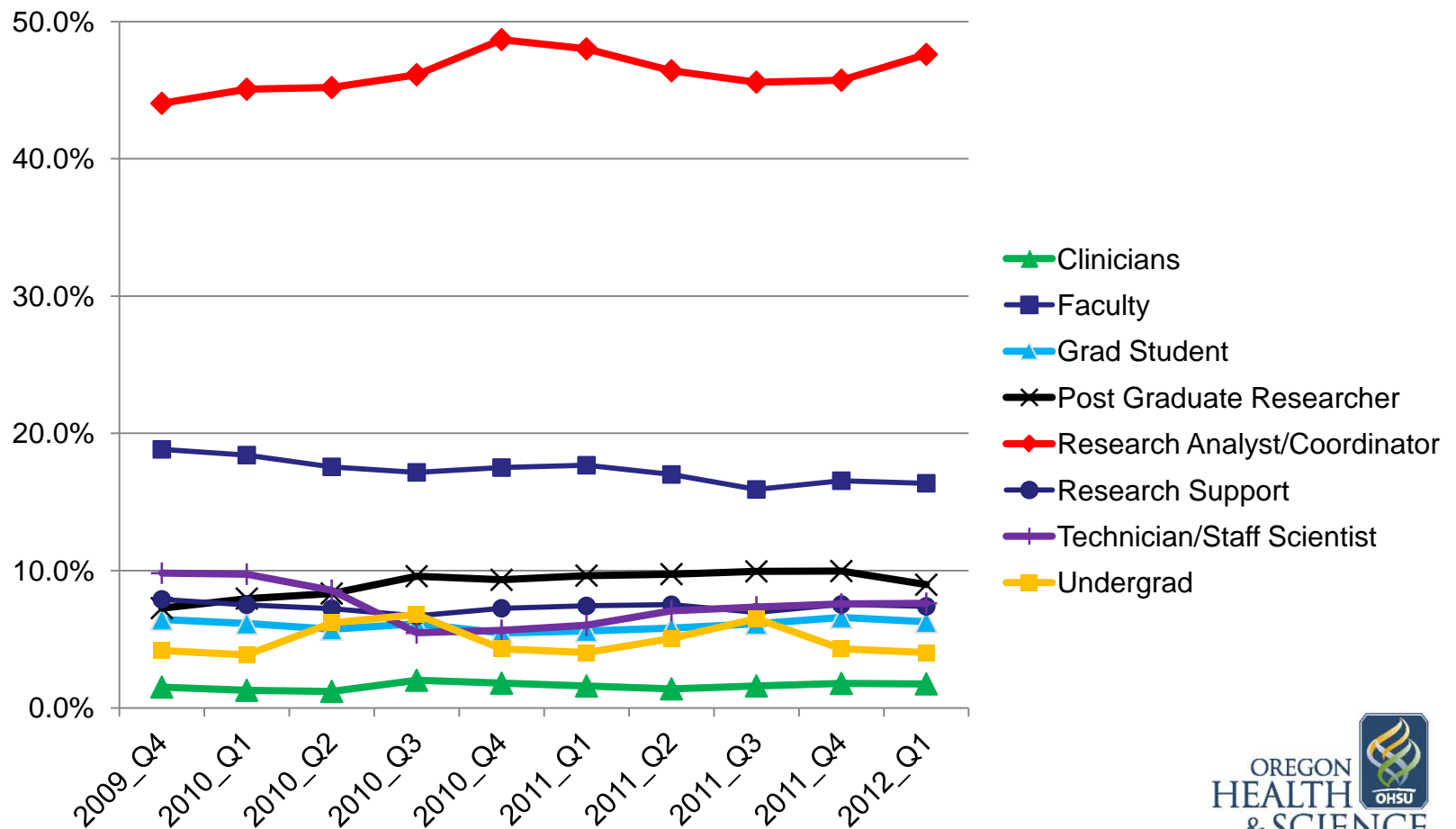
Federal Funding for Science and Jobs STAR METRICS Report for

Oregon Health And Science
University
2012 Q1

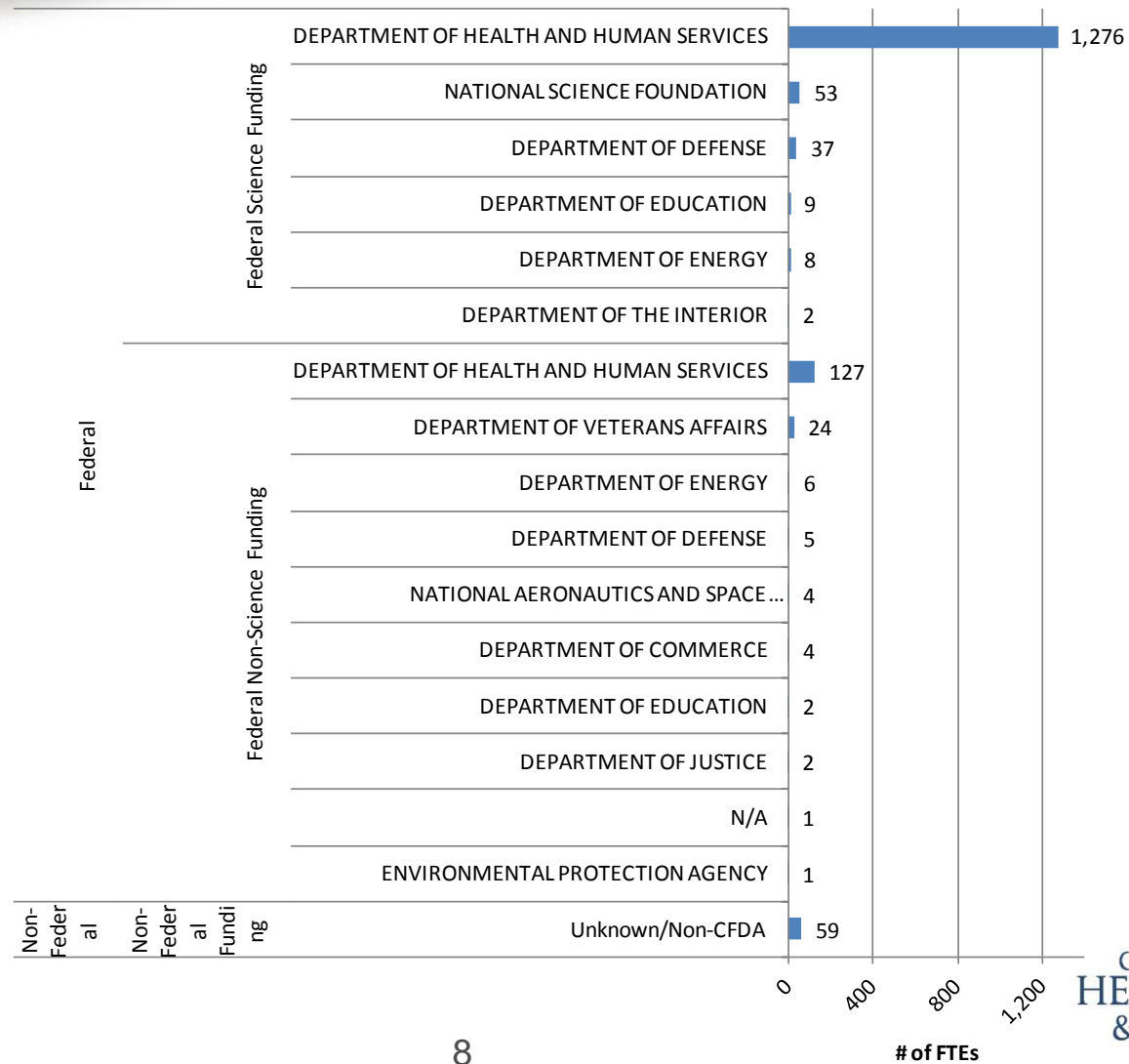


Who is working in research at OHSU?

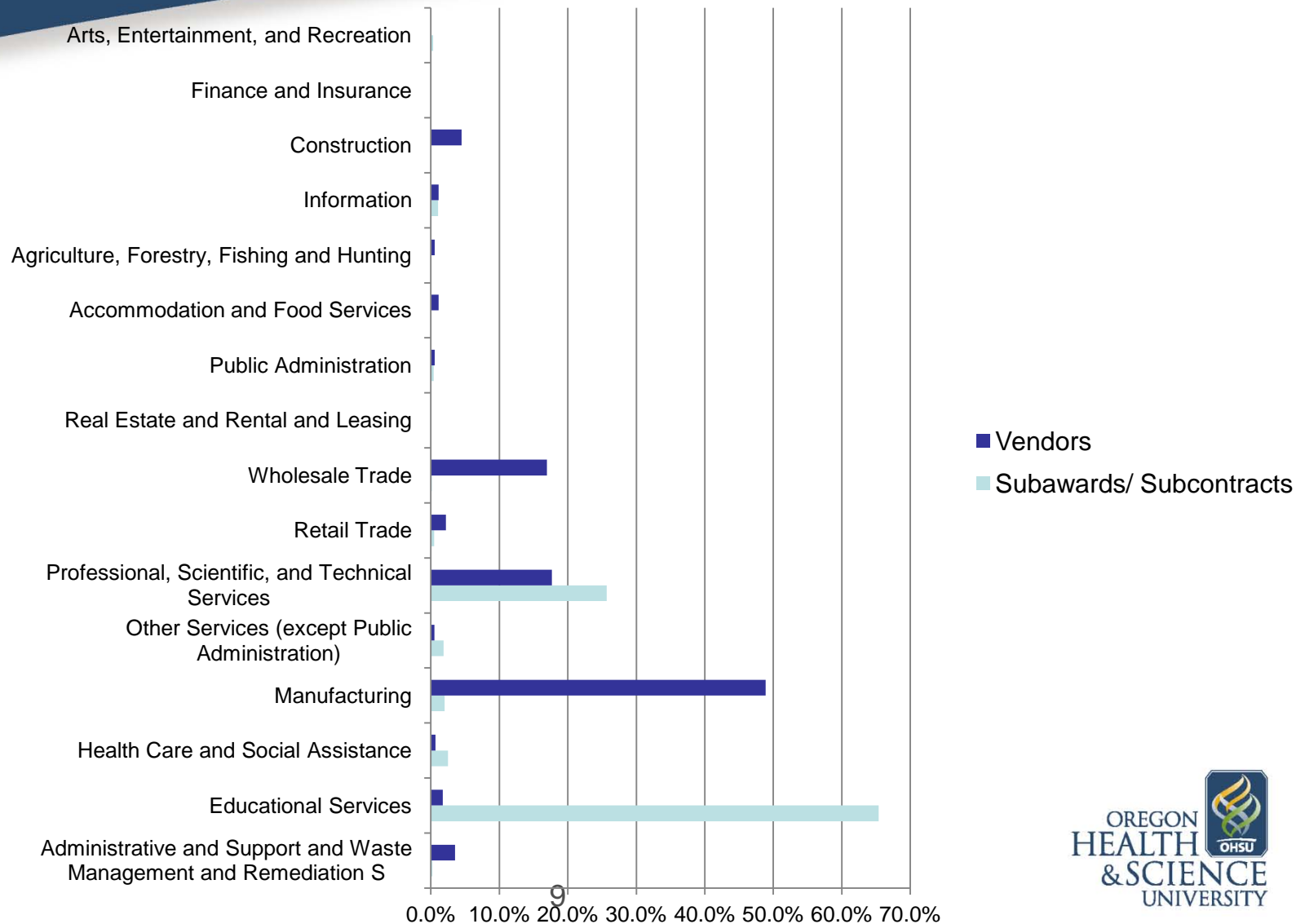
Direct Payroll FTEs by Occupational Classification



How are research positions funded at OHSU?



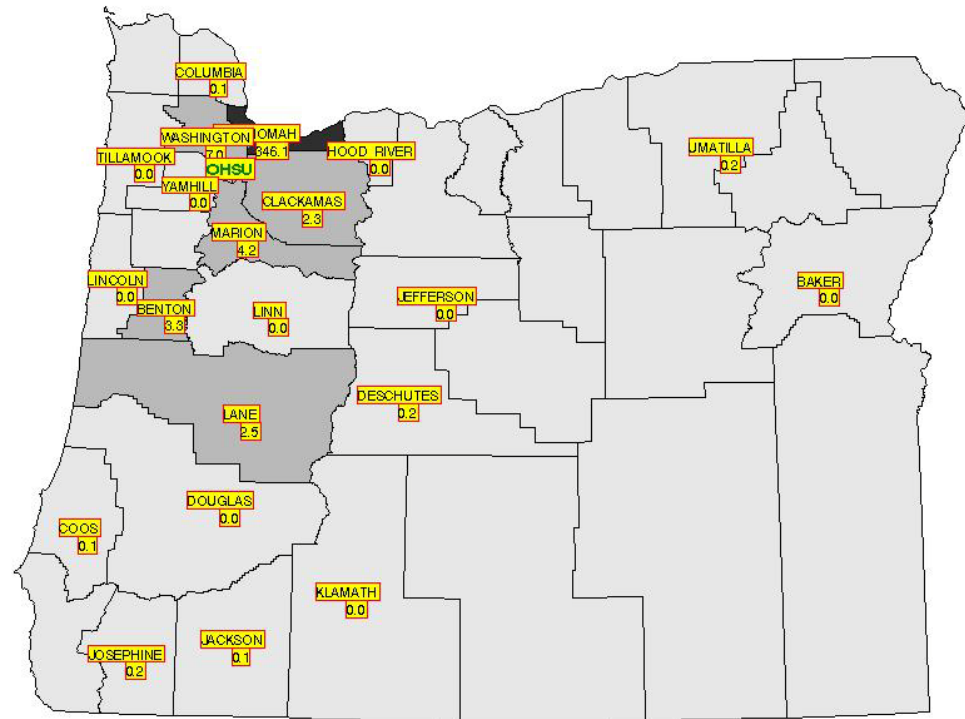
How are we spending our grant funds?



Local Economic Impact of OHSU – Total Jobs

TOP 10 Counties

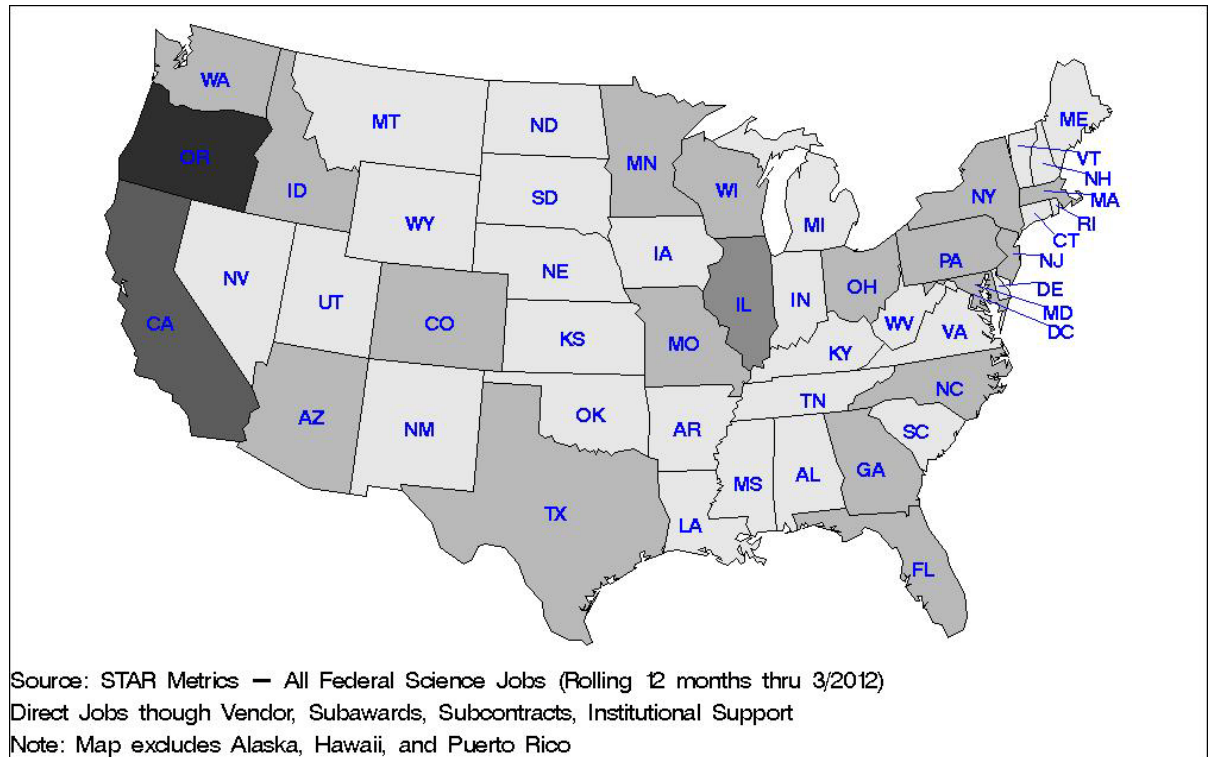
County Name	Total
MULTNOMAH	346.1
WASHINGTON	7.0
MARION	4.2
BENTON	3.3
LANE	2.5
CLACKAMAS	2.3
UMATILLA	0.2
DESCHUTES	0.2
JOSEPHINE	0.2
JACKSON	0.1



Source: STAR Metrics - All Federal Science Jobs (Rolling 12 months thru 3/2012)
Direct Jobs through Vendor, Subawards, Subcontracts, Institutional Support

National Economic Impact of OHSU – Total Jobs

TOP 10 States	
State	Total
OR	404.2
CA	51.8
IL	29.3
WA	17.0
MA	12.9
PA	9.5
GA	9.0
NY	6.9
TX	6.3
OH	5.6



New Excel Format

STAR METRICS Report for Star State University 2011 Q3 Results

SUMMARIES

[Jobs Summary](#)[Jobs and FTEs by Funding Source](#)[County Map](#)[US States Map](#)

DETAILED SUMMARIES

[Employment and Awards](#)[Overall Jobs & FTEs](#)[Summary List by Source](#)

QUARTERLY REPORTS

[FTEs](#)[Individuals](#)[Subawards](#)[Vendors](#)

ROLLING 12 MONTH REPORTS

[FTEs](#)[Individuals](#)[Subawards](#)[Vendors](#)

These tables are presented as reports only. They should not be used as analytic tools.

[Please review feedback on your exception reports at STAR METRICS](#)

Goals of Phase II

- Develop a platform that can transparently and accurately relate inputs and outputs/outcomes
- Describe the intricate and flexible dynamics of how discovery and innovation translate into four broad categories of impact:
 - knowledge (publications, citations...)
 - economic (patents, spin-off companies...)
 - workforce (employment, student mobility...)
 - social (health, environment, energy...)
- Combine authoritative input and output data from several disconnected sources
- Interact and interface with ongoing experiments in this arena, such as VIVO, eagle-i and the Brazilian Lattes Platform
- Track funded scientists, throughout their career