

Pivot Profiles

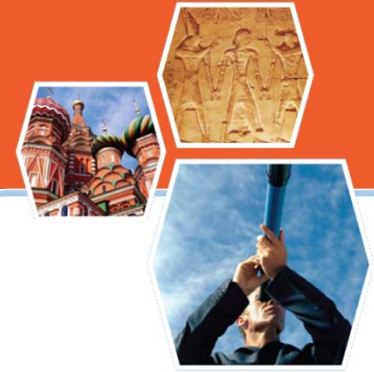
ScienCV Panel Discussion

August 27, 2012

Marie Linvill



Finding Funding



Funding Opportunities



A global database, packed with 26,000 records of funding opportunities worth an estimated \$33 billion, COS Funding Opportunities helps you find grants and fellowships, and other monies from both private and public sponsors. **Updated daily!**

Confidential

RefWorks  COS

What is COS Funding Opportunities ?



- Most comprehensive source for connecting researchers to funding opportunities
- Trusted source for 30 years
- From 89 countries
- All categories of sponsors, public and private
- Funding for many purposes: grants, fellowships, capital improvements, travel, visiting professors, training and more

Confidential

Develop Connections



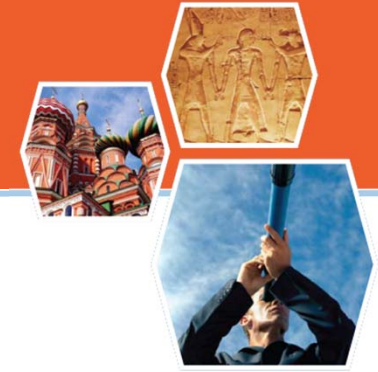
Scholar Universe

A database of nearly 3 million profiles of scholars and researchers from around the world that helps you find potential collaborators, peer-reviewers, mentors, consultants and experts. **Your network is the world's scholarly community!**

Confidential

RefWorks  COS

Overview



- Nearly 3 million profiles and growing
- Global coverage – 75 countries
- Over 200 disciplines represented
- Proprietary disambiguation algorithm to link people to publications
- An aggregated content store is produced from
 - Public sources, publishers, academic institutions, integrated web searches

How are profiles created?



- Editorially created from public information
- Institution hierarchy modeled:
 - University of Texas at San Antonio
 - College of Sciences
 - Department of Biology
- Controlled vocabularies + free text
- Publications sourced from:
 - PubMed, ERIC, Agricola
 - ProQuest proprietary citation databases

Profile fields




- Name – store multiple current and past variants
- Affiliation/role – present/past
- Degree
- Expertise Statement
- Email/phone/fax
- Webpages
- Language and fluency level
- Keywords
- Publications
- Grants
- Awards and honors
- Patents
- Co-Authors and colleagues (derived data)

[Home](#)

[Funding](#)

[Profiles](#)

[Admin](#)

Funding 



George Perry

Dean, [College of Sciences](#)
[University of Texas at San Antonio](#)
George.Perry@utsa.edu

[Overview](#)

[Publications \(767\)](#)

[Grants \(12\)](#)

Communities

Neuroscience, Biological Science

Degrees

1979, Ph.D., University of California at San Diego, Marine Biology
 1974, B.A., University of California, Santa Barbara, Zoology

Honors

Research Career Development Award
 National Institutes of Health
 1988 - 1993

[more »](#)

Expertise

Our studies have been focused on oxidative abnormalities in Alzheimer disease. We have found that Alzheimer disease results from mitochondrial abnormalities that define Alzheimer disease as a metabolic disorder. Our studies are focused on the mechanism of formation and physiological consequences of the cytopathology of Alzheimer disease. We have shown that oxidative damage is the initial cytopathological abnormality in Alzheimer disease. We are working to determine the sequence of events

[more »](#)

Languages

Spanish

Funding Matches

112 funding opportunities

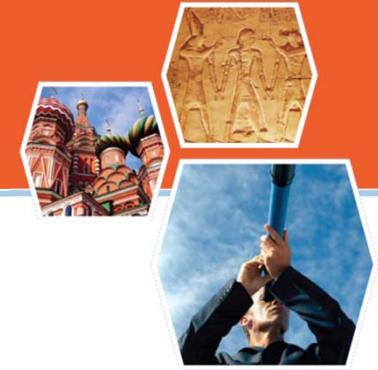
Keywords

[oxidative stress](#) [pathology](#) [alzheimer's disease](#) [proteins and macromolecules](#) [cytoskeleton](#)

Affiliations

Dean, [College of Sciences, University of Texas at San Antonio](#)
 One Utsa Circle
 San Antonio, TX
 United States

Status of Profiles



- Increase profile interoperability
 - Individual management
 - Export of profiles
 - Profile data ingest

Individual Management



- Enhanced online profile editing
 - Manage biographical info and external IDs
- Publication management
 - Automated linking
 - Autosuggested publications
 - User-entered citations
- Admin editing privileges

Profile Exports and Ingest



- Batch exports/imports
 - VIVO (new instance)
 - Integration with existing VIVO
- Data harmonization
- Personal exports
 - CV
 - ScienCV
 - Other

ORC - ASC Training Award for Research in Alzheimers Disease and Related Dementias

Limited submission **NEW**

Editorial last revised: Aug 24 2010 10:47PM

Full details: <http://grants.nih.gov/grants/guide/rfa-files/RFA-DK-10-008.html>

Sponsor type: Federal, U.S.

Sponsor: Department of Health and Human Services (HHS) National Institutes of Health (NIH)

<Limited submission> Only one grant application will be accepted from each institution. [more ...](#)

Abstract: NIDA Core Center of Excellence Grants (P30) are intended to bring together investigators currently funded by NIH or other federal or nonfederal sources, to enhance the effectiveness of existing research and also to extend the [more ...](#)

Eligibility: The following organizations and institutions are eligible to apply: domestic public and private institutions of higher education, including Hispanic-serving institutions and Historically Black Colleges and Universities, tribally controlled [more ...](#)

Requirements: Ph.D./M.D./Other Professional

Faculty matches:

30 faculty within my institution

50 + faculty from outside institutions




Amount: Upper \$3,000,000 Lower \$100,000

Amount note:

This FOA will utilize the P30 mechanism. Applicants may apply for up to five years of support, whether as new or competing renewal applications. Because the nature and scope of the proposed research [more ...](#)

Funding type: Program or Curriculum Development or Provision

Tools

-  [I'm tracking this opp](#)
-  [Share with faculty](#)
-  [Send feedback to the Editorial team](#)

- [My Tags](#)
- [Show me more opps like this](#)
- [People I've shared this with](#)

Faculty matches

30 Faculty matches within my institution for opp:

Opportunity


ORC - ASC Training Award for Research in Alzheimers Disease and Related Dementias
Limited submission
NEW

Share Ordered by match relevance

1 - 6 of 17 results [Next](#) ▶

<input type="checkbox"/>				Faculty action
<input checked="" type="checkbox"/>	George Perry	Professor	Center of Membrane Sciences	—
<input checked="" type="checkbox"/>	Walter Churchill Willett	Professor, Associate Physician	College name	—
<input type="checkbox"/>	Polly A. Newcomb	Professor (affiliate)	Dept of Genetics, Cell Biology, and Development...	Tracking
<input checked="" type="checkbox"/>	John R. Potter	Associate Professor	College name	—
<input type="checkbox"/>	Susan J. Morrison	Associate Professor	College name	—
<input type="checkbox"/>	Allan E. Strand	Associate Professor	College name	Active
<input type="checkbox"/>	Arul M. Chinnaiyan	Post Doc	Department name	—

Pages ◀ Previous 1 | 2 | 3 [Next](#) ▶

People you selected to share with

Walter Churchill Willett

Firstname Lastname

Paulo José Samenho Moran

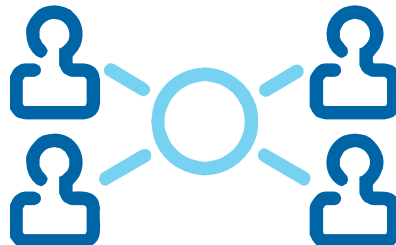


Firstname Lastname

Collaboration



- Challenge of finding new collaborators
- Jump start an enterprise solution for all researchers, across all disciplines



- Connect funding to people and people to each other
- Help secure funding through teams

Confidential

George Perry

Affiliation Adjunct Professor, Pathology, Case Western Reserve University, [more](#)

Web pages <http://www.bio.utsa.edu/faculty/perry.html>

Expertise Our studies have been focused on oxidative abnormalities in Alzheimer disease. We have found that Alzheimer disease results from mitochondrial abnormalities that define Alzheimer disease as a metabolic disorder. [more](#)



Tools

 [Send this profile update to the Profile editorial team](#)

Summary [Publications](#): 561, last 5 years: 58
[Grants](#): 12
[Patents](#): 1
[Honors / Awards](#): 2
[Co-Authors](#): 12

Communities Internal medicine
Neuroscience
Pathology and Laboratory medicine
Psychiatry
[more](#)

Languages Spanish

Degrees Ph.D., University of California, Marine Biology, 1979
[more](#)

Faculty matches: **21 Funding opportunities**

Contact info George.Perry@utsa.edu
[more](#)

[Publications: 561](#) [Grants: 12](#) [Patents: 1](#) [Honors: 2](#) [Co-Authors: 12](#) [Web: 12](#) [Colleagues: 597](#) [Associations: 12](#)

PUBLICATIONS

Showing 1 to 5 of 561 [1](#) [2](#) [3](#) [4](#) | ... | [79](#) [Next](#) ▶

DATE RANGE

- ☒ All
[Last 5 years](#)
[Last 10 years](#)

TYPES

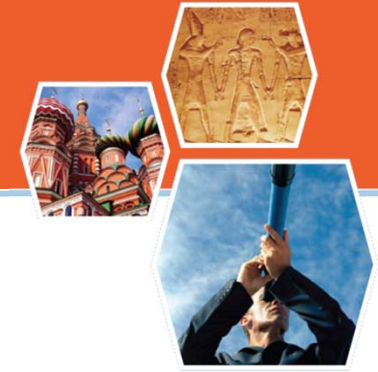
- ☒ All - 561
[Articles](#)
[peer reviewed - 393](#)
[other - 121](#)
[Chapters - 38](#)
[Conference papers - 3](#)

SEARCH WITHIN THIS LIST

GO

Sort by Match relevance ▼	Authors (in order)	
"The mitochondrial common deletion in Parkinson's disease and related movement disorders." Parkinsonism & related disorders 8, No. 3 2002, pp. 165-70. see details	1. Zhang, Johan 2. Montine, T Josephine 3. Smith, Michael 4. Siedlak, S L	5. Gu, Gilbert 6. Robertson, Dennis 7. Perry, George
"Morphological aspects of oxidative damage in Alzheimer's disease" In Mitochondria and Free Radicals in Neurodegenerative Diseases, pp. 335-342. see details	1. Smith, Michael 2. Sayre, Lorie 3. Perry, George 4. Beak MF	5. Howell, Nathan 6. Bodis-Wollner, Sean
"Neuronal survival and death in Alzheimer disease" In Advances in Behavioral Biology 51: Mapping the Progress of Alzheimer's and Parkinson's Disease, pp. 49-57. see details	1. Raina, Annette 2. Rotkamp, Chistine 3. Zhu, Xing 4. Ogawa, O	5. Hochman, Antony 6. Shimohama, Sabine 7. Takeda, Antony more
"Challenging the Amyloid Cascade Hypothesis: Senile Plaques and Amyloid- beta as Protective Adaptations to Alzheimer Disease" Annals of the New York Academy of Sciences 1019 2004, pp. 1-4.	1. Hyoung-Gon, L. 2. Casadesus, G. 3. Zhu, Xenos 4. Takeda, Antony	5. Perry, George 6. Smith, Mark A.

What Pivot Delivers



- Tight integration of profiles and funding opportunities
- Uses our proprietary algorithm for assessing connections
- Promotes connections between research development professionals and faculty
- Facilitates collaboration between researchers

Confidential



My opportunities

Making collaboration easy

Important: **Active**

My reminder list: **Tracked**

Helping others: **Shared**

2010 November



Who I've shared with

20 Research office
18 Faculty



What are people doing

20 Opps viewed Set
3 as active Add to
7 tracking
5 Dismissed

[See details for opps I've shared](#)

Saved Searches

Results for: Oct 18 – Oct 24, 2010

Results for: Oct 18 – Oct 24, 2010	Limited submission	Other	Faculty matches	
Medical equipment NEW	2	3	Yes, see detail level	
Advanced neurosis in the latter stages of needing 2 lines for ...	3	10	58 faculty	
Corporate licensing	5	32	12 faculty	
See your list of saved searches You have more results See details				

News & Tips

9/22/20

Proin tellus dolor, gravida vel molestie ac, tempus nec tellus. Curabitur a est sapien, quis adipiscing metus. Proin tellus dolor, gravida vel molestie ac, tempus nec tellus. Curabitur a est sapien, quis adipiscing metus

[See article](#)

9/1/20

Proin tellus dolor, gravida vel molestie ac, tempus nec tellus. Curabitur a est sapien, quis adipiscing metus.

[See article](#)

What's new at Eureka

Proin tellus dolor, gravida vel molestie ac, tempus nec tellus. Curabitur a est sapien, quis adipiscing metus. Proin tellus dolor, gravida vel molestie ac, tempus nec tellus. Curabitur a est sapien, quis adipiscing metus

[More](#)



[See the demo](#)



[collaboration](#)



[User control](#)

What Pivot Delivers



- Largest, global funding discovering and management tool
- 3 million pre-populated profiles from worldwide institutions
- Tight integration of profiles and funding opportunities to connect funding to faculty
- Workflow solution uniquely tailored to research administrators
- Find collaborators within and outside researcher's institution

Contact Information



- Marie Linvill
marie.linvill@refworks-cos.com

Thank you!