

LOUISIANA EPSCoR: AN OVERVIEW



Michael Khonsari

Louisiana EPSCoR Project Director

Associate Commissioner for Sponsored Programs

Research & Development, Louisiana Board of Regents

Dow Chemical Endowed Chair and Prof of Mechanical Engineering
Louisiana State University

Louisiana Demographics

Population: 4.5 million

White: 62.7%

African American: 32%

Asian: 1.5%

Other: 3.8%

Louisiana Higher Education Enterprise

<u>Louisiana State University System</u>	<u>University of Louisiana System</u>	<u>Southern University System</u>	<u>Louisiana Community Tech College System</u>	<u>Private Universities</u>
10 Campuses	9 Campuses	5 Campuses	10 Campuses	2 HBCU Institutions
3 PhD Granting Institutions	4 PhD Granting Institutions	1 PhD Granting Institution		2 PhD Granting Institutions
Includes Health Sciences Center	1 HBCU	3 HBCU Institutions		Includes Tulane and Tulane Health Sciences Center

EPSCoR Strategically Partners with Board of Regents



Cash contribution to date
Exceeds \$55 million

EPSCoR Committee Reflects Diversity and Expertise

22 Members: Representation from campuses appointed by System Presidents (public and private)

Representatives from NASA, DOE, DEPSCoR, IDeA

Representatives from three industry sectors

Representation from Governor's Office for Economic Development

Executive Committee – Chair, Vice Chair, Deputy Commissioner of Board of Regents, and Project Director

EPSCoR Influences State Innovation

Louisiana Innovation Council

- Members appointed by Governor
- 30 members statewide
- 4 are EPSCoR members

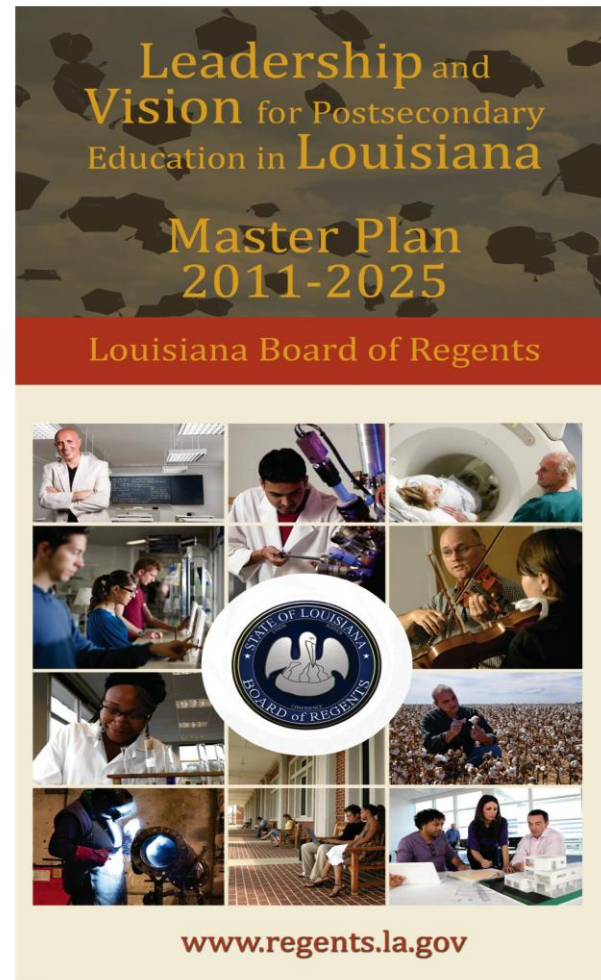
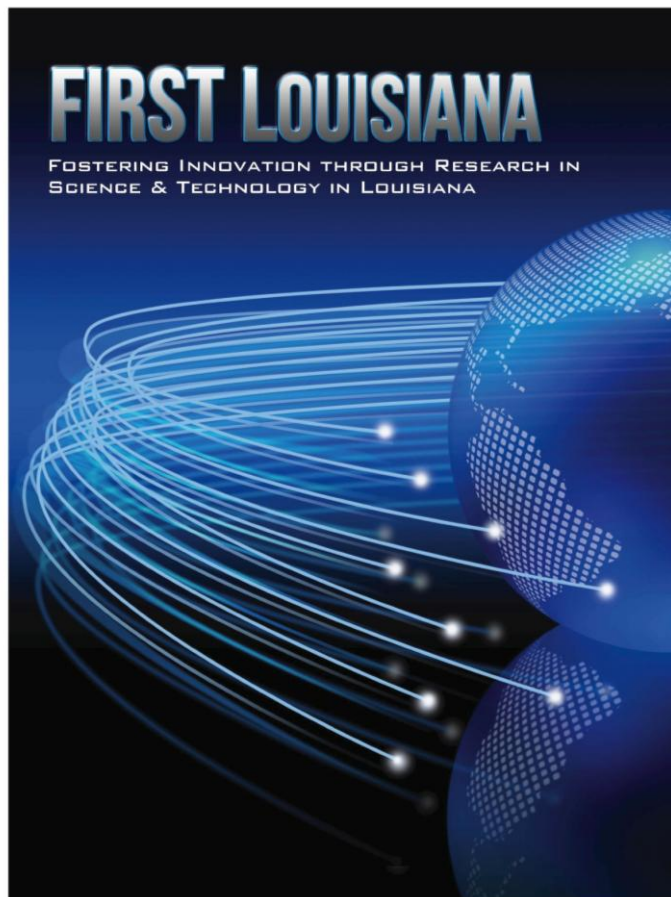
Board of Regents Master Plan

Research Advisory Council

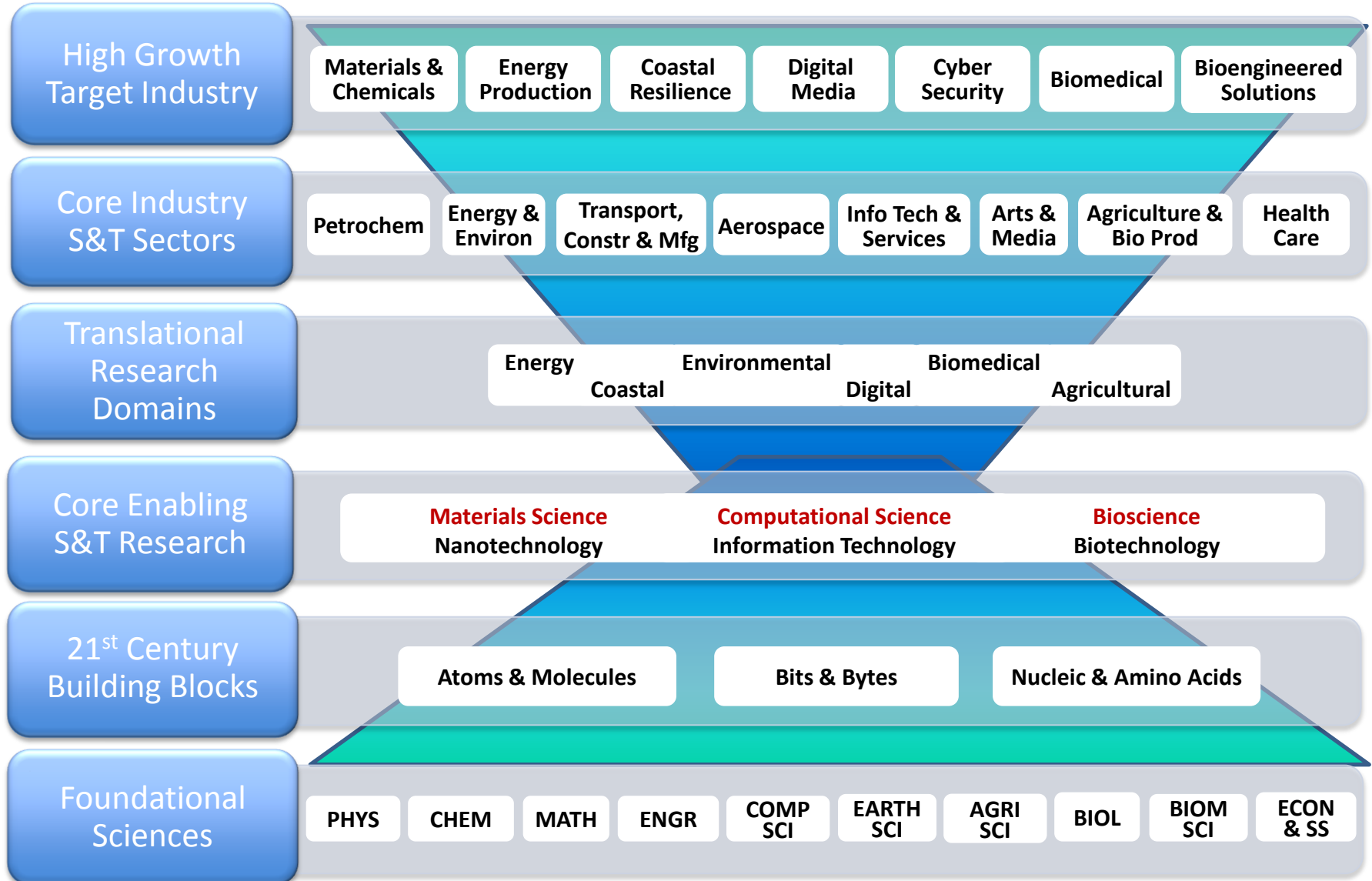
- Chair and Vice Chair are Members of EPSCoR Committee

EPSCoR Influences Prioritization of State Science and Technology

Louisiana S&T Plan



EPSCoR Priorities Align with State S&T Plan



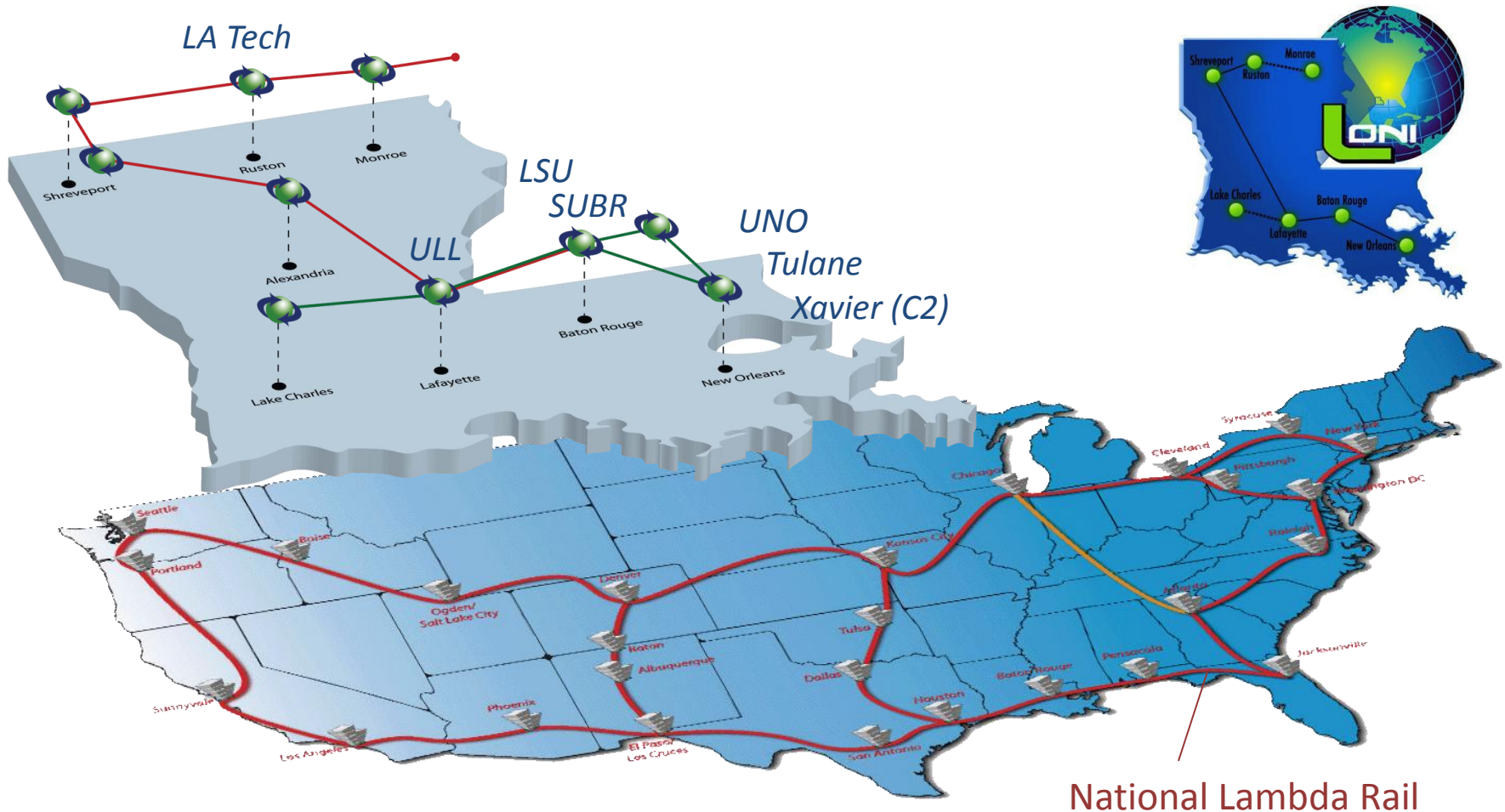
EPSCoR Strategically Determines Research Themes

EPSCoR Committee strategically determines general research themes based on State's investments, strengths, and needs

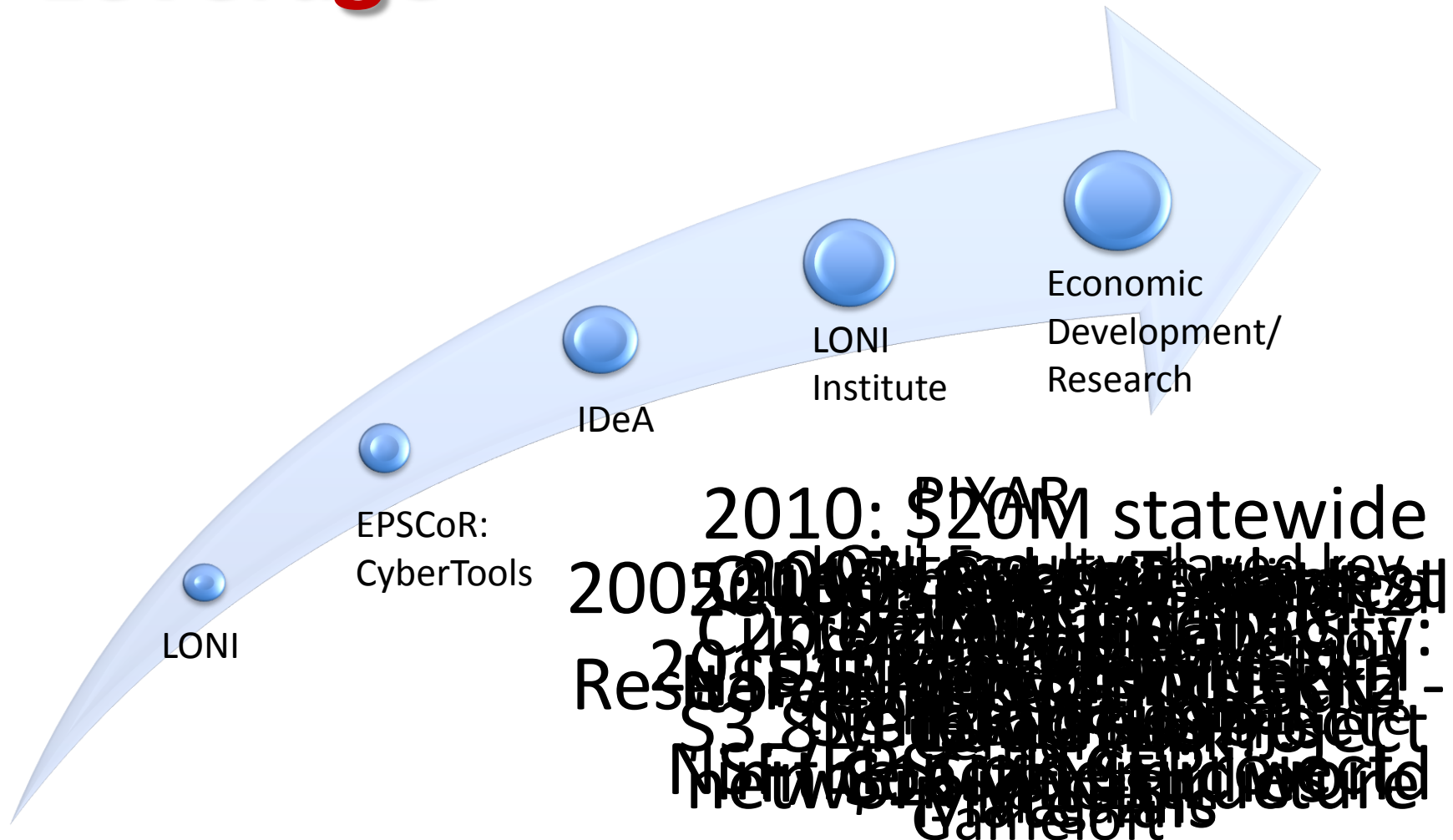
Collaborative research proposals are solicited from universities across the State

Proposals are evaluated by a peer review process using experts external to Louisiana

EPSCoR Helps Create and Leverage State Investments

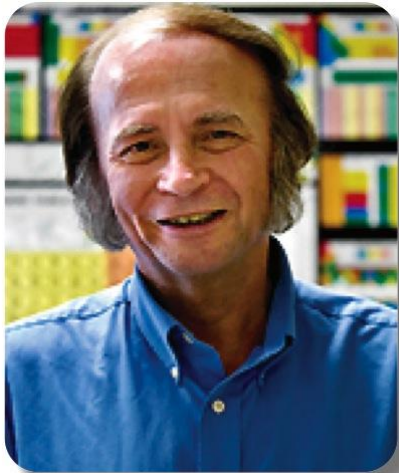


EPSCoR Helps Create and Leverage State Investments

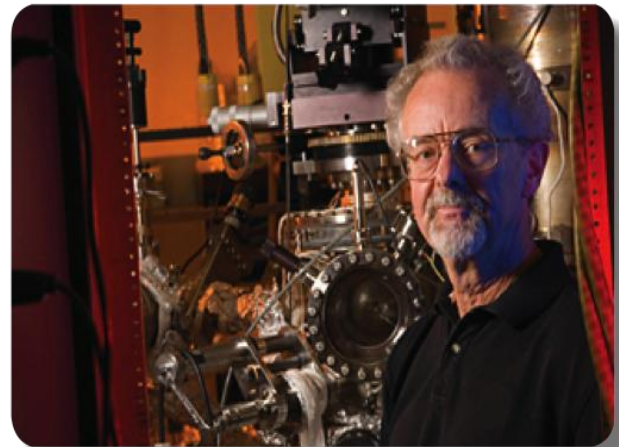


Leading EPSCoR Researchers Mentor Louisiana Faculty

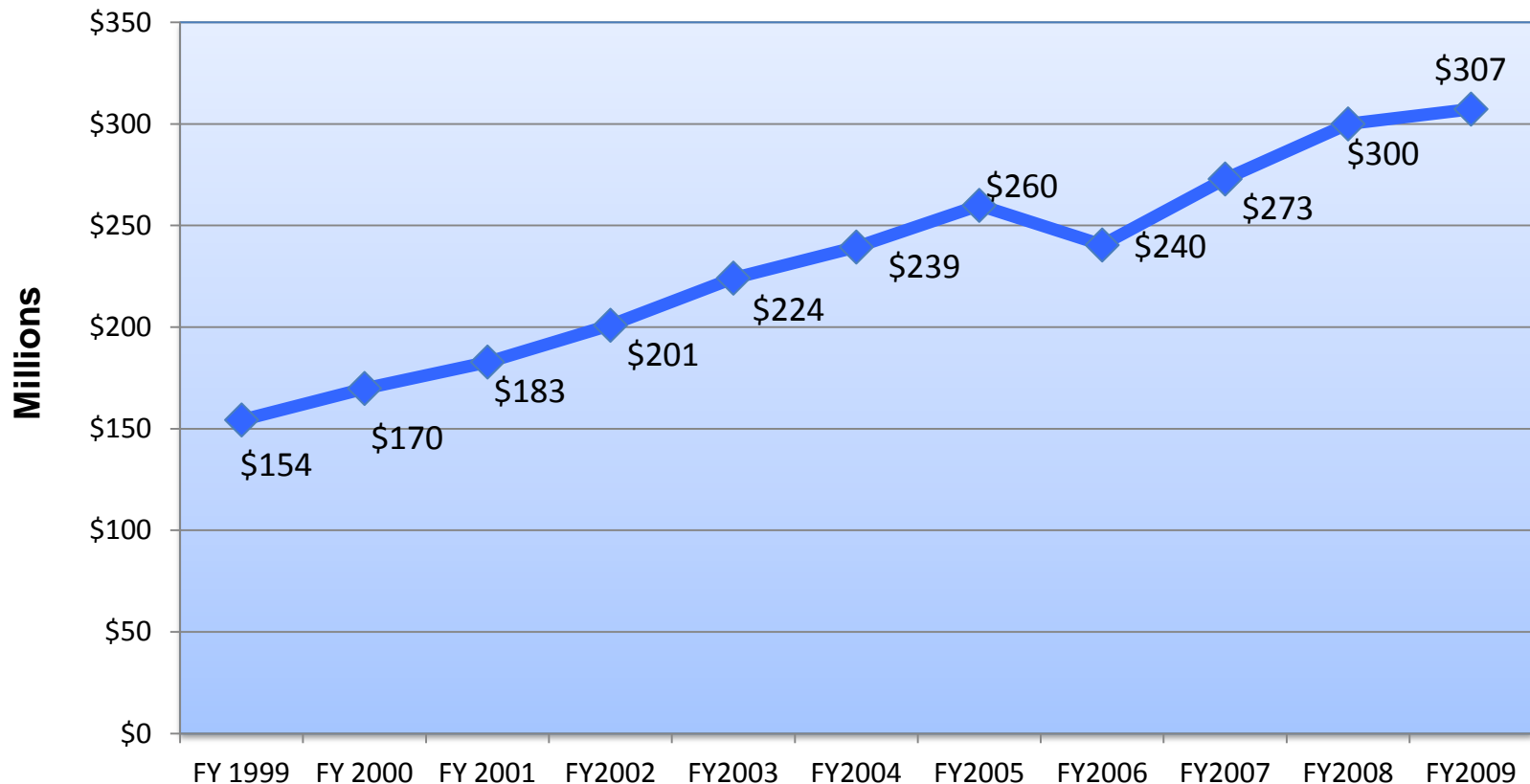
John Perdew
TULANE



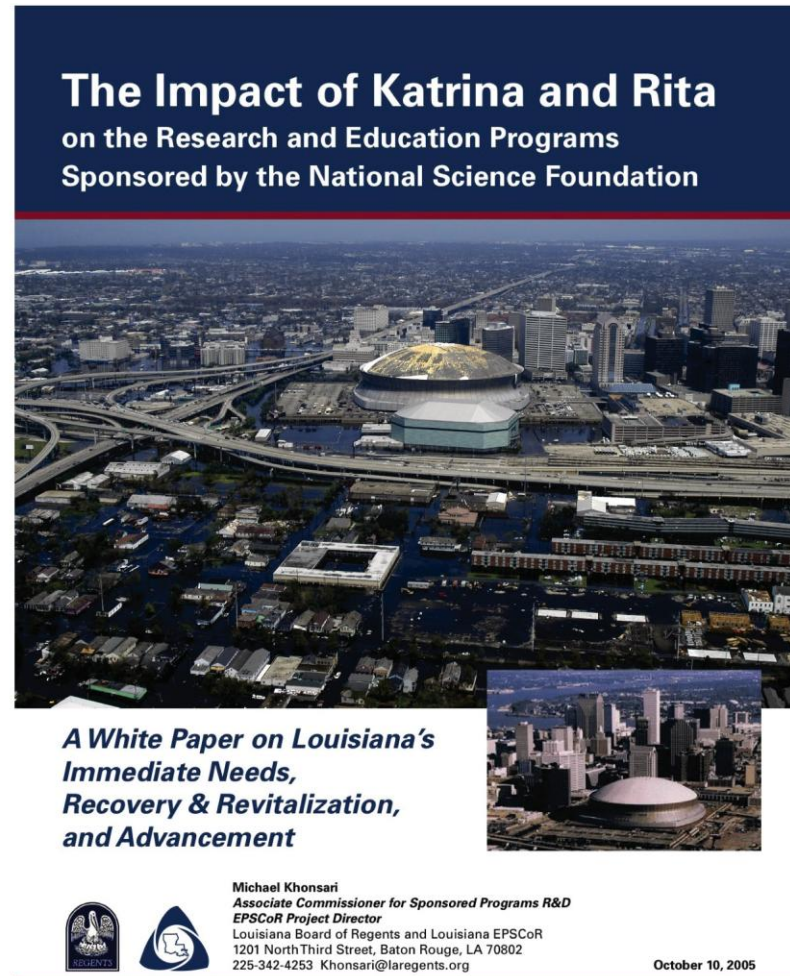
Ward Plummer
LSU



EPSCoR Positively Impacts Upward Trajectory of LA Research Expenditures



EPSCoR Responds in Aftermath of Katrina



EPSCoR Responds in Aftermath of BP Oil Spill

**Collaborative Scientific Research Opportunities
Relative to the Gulf Oil Spill**

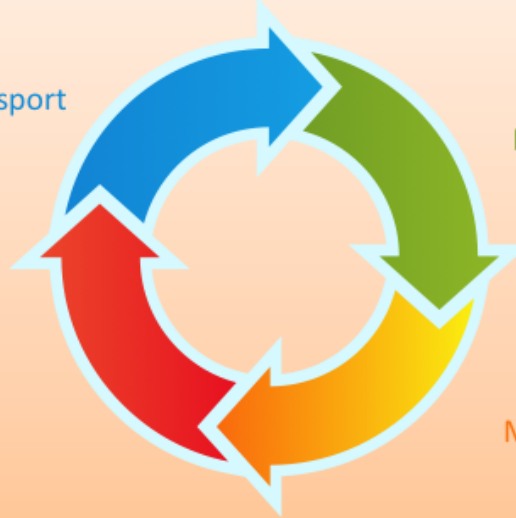


Engineering Aspects & the Transport
and Fate of Spilled Oil

Coastal and Ocean Environments:
Damage, Remediation and Recovery

Economics, Policy and
Decision Support Systems

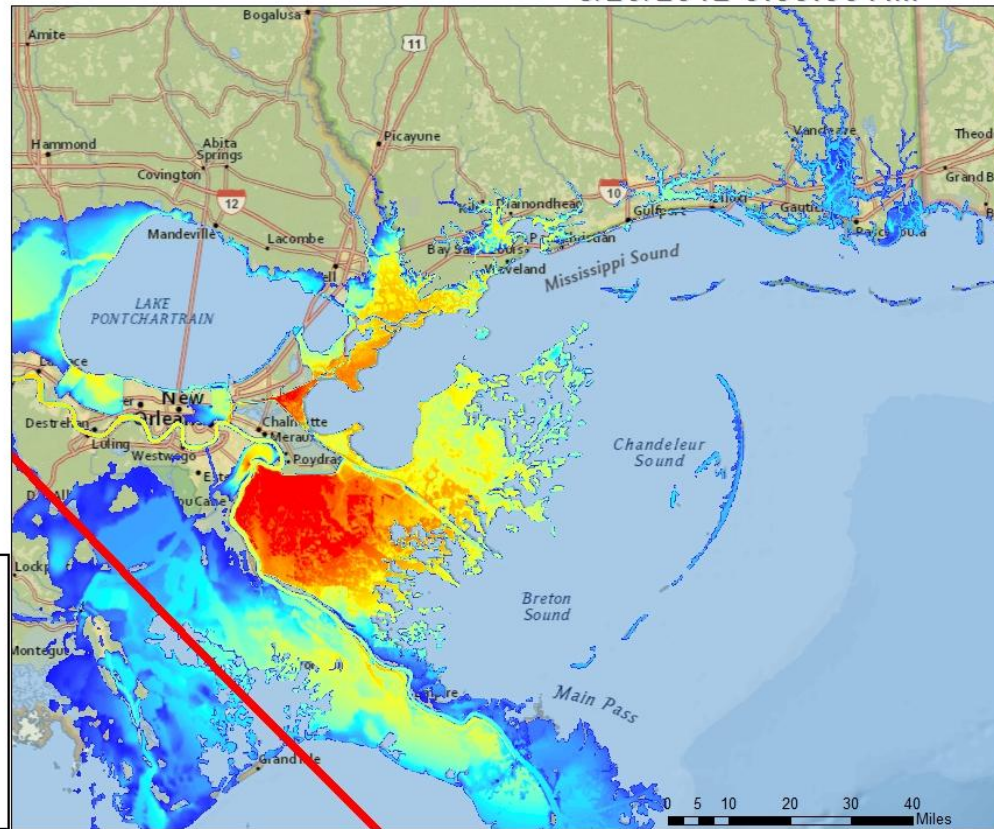
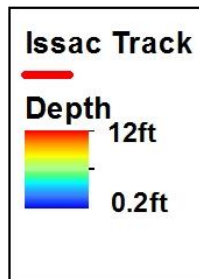
Human Communities: Disaster
Management, Sustainability and Health



EPSCoR Responds to Hurricane Isaac

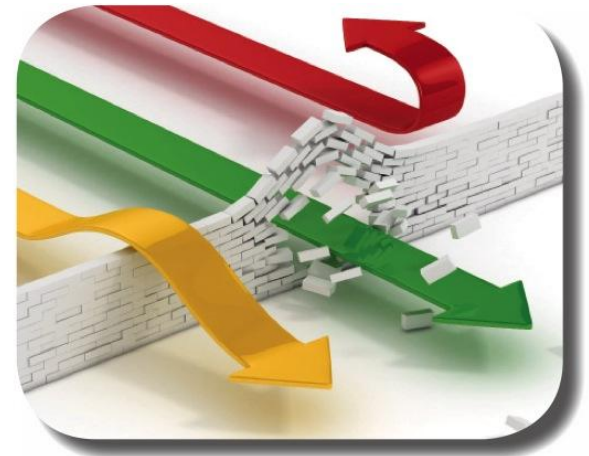
Rapid Estimates for Approaching Landfall (REAL)
JSU Coastal Hazards Center

Issac Advisory #31
8/29/2012 5:00:00 AM



EPSCoR Catalyzes Collaboration

LA EPSCoR has broken down boundaries between campuses

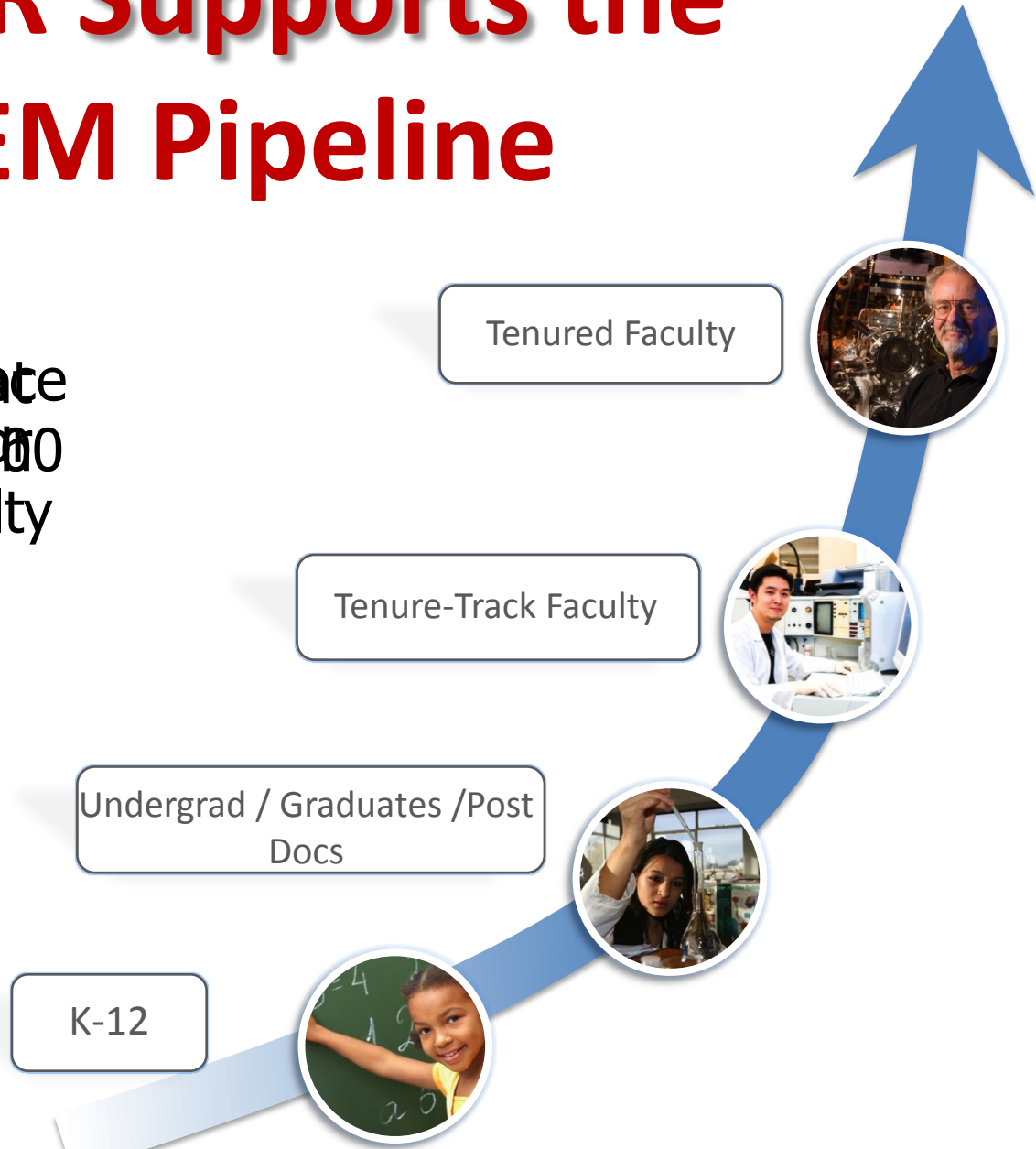


LA EPSCoR is a proven catalyst for achieving increased statewide collaboration and national competitiveness



EPSCoR Supports the STEM Pipeline

Seed funding for
new faculty
establishment



America COMPETES Reauthorization Act of 2010

“it shall be an objective of the Foundation to strengthen research and education in the sciences and engineering, including independent research by individuals, throughout the United States, and to avoid undue concentration of such research and education”; and

America COMPETES Reauthorization Act of 2010

“the Nation requires the talent, expertise, and research capabilities of all States in order to prepare sufficient numbers of scientists and engineers, remain globally competitive and support economic development.”

EPSCoR is Transforming Louisiana:

In Research

In Education

In Economic Development

THANK YOU FOR YOUR ATTENTION