



United States Department of Agriculture
Research, Education, and Economics

The Urban Ecosystem: A Perspective from USDA

Dr. Ann M. Bartuska

United States Department of Agriculture
Deputy Under Secretary for Research, Education, and Economics

Regional Approaches to Urban Sustainability: A Focus on Portland
Portland, OR
May 29, 2013





Why are we here?

- New emphasis on the greater **urban ecosystems**
- Recognition for ***sustainable cities***
- Bringing science disciplines together...***socioecology***
- **Breaking down silos** in governance and management
- **Market-based** solutions
- Valuing the **green infrastructure**
- Emergence of “**stewardship**” as a focus by civil society



What is USDA doing?

- **Research in urban ecosystems – *e.g Baltimore LTER***
 - *Linking the ecological and societal disciplines*
- **Developing decision tools – *iTree***
- **Rethinking agricultural systems – *maturation from community gardens for subsistence to a new meaning of “local”***
- **Reconnecting rural to urban – *the Urban Waters Partnership***



United States Department of Agriculture
Research, Education, and Economics



Urban Research at USDA

FOREST
INVENTORY AND
MANAGEMENT

ECOSYSTEM
SERVICES

HUMAN HEALTH
AND WELL-BEING

URBAN
SUSTAINABILITY

GREEN
INFRASTRUCTURE

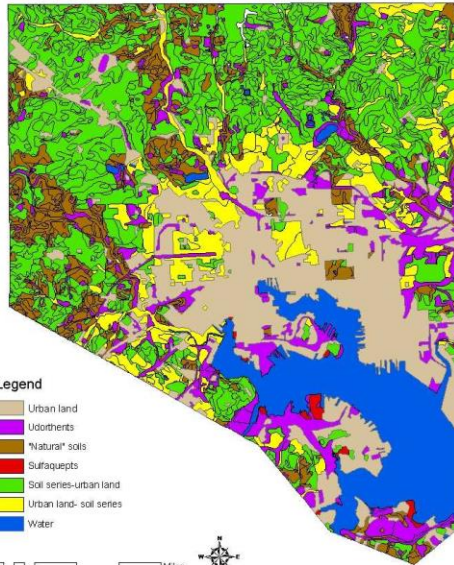
WATER AND
WATERSHEDS

URBAN LONG-
TERM RESEARCH

Urban Soil Research



Soils of Baltimore City



Legend

- Urban land
- Udothents
- "Natural" soils
- Surfaquepts
- Soil series-urban land
- Urban land- soil series
- Water

0 0.45 0.9 1.8 2.7 3.6 Miles





What is USDA doing?

- Research in urban ecosystems – *e.g Baltimore LTER*
– *Linking the ecological and societal disciplines*
- **Developing decision tools** – *iTree and STEW-MAP*
- Rethinking agricultural systems – *maturation from community gardens for subsistence to a new meaning of “local”*
- Reconnecting rural to urban – *the Urban Waters Partnership*



A Cooperative Partnership



**The National
Arbor Day Foundation®**



i-Tree Goals

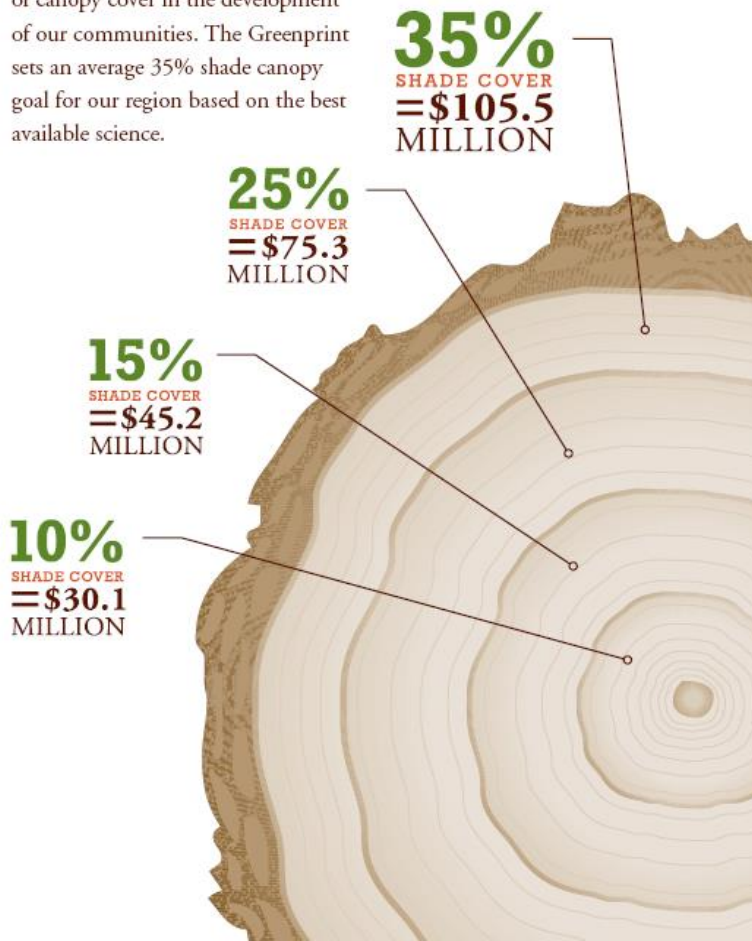
Optimal management of urban natural resources to improve environmental quality and human health and well-being

Single, united application

- ✓ What to plant
- ✓ Where to plant
- ✓ How much (and when) to plant
- ✓ Sustainable forests with optimal benefits

SHADE COVER ADDS VALUE TO OUR REGION

Building an urban forest agenda begins by recognizing the pivotal role of canopy cover in the development of our communities. The Greenprint sets an average 35% shade canopy goal for our region based on the best available science.



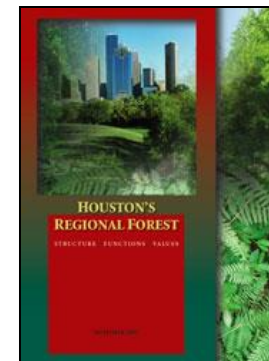
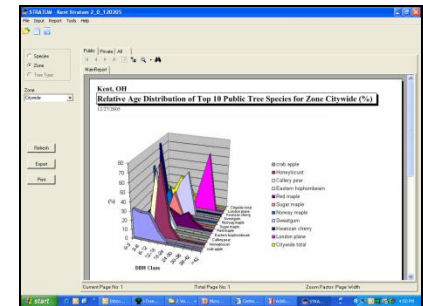
What's Included?

Two urban forest assessment tools:

- ✓ Assessing street tree populations
- ✓ Assessing urban ecosystems

Multiple Utilities:

- ✓ Data collection & transfer
- ✓ Inventory management
- ✓ Storm damage assessment
- ✓ Functional Species Selector





i-Tree Models Have Been Used In Many Cities To Justify Major Tree Planting Programs

- New York City recently developed a long-range plan to plant a million trees over the next 10 years as part of a public/private partnership.
- Both the UFORE and STRATUM i-Tree models were used to develop cost and benefit data.
- In April, 2009, Sec. of Ag. Tom Vilsack, Forest Service Chief Kimbell, and Mayor Bloomberg announced a \$2 million dollar federal grant to create green jobs as part of the NYC million tree campaign

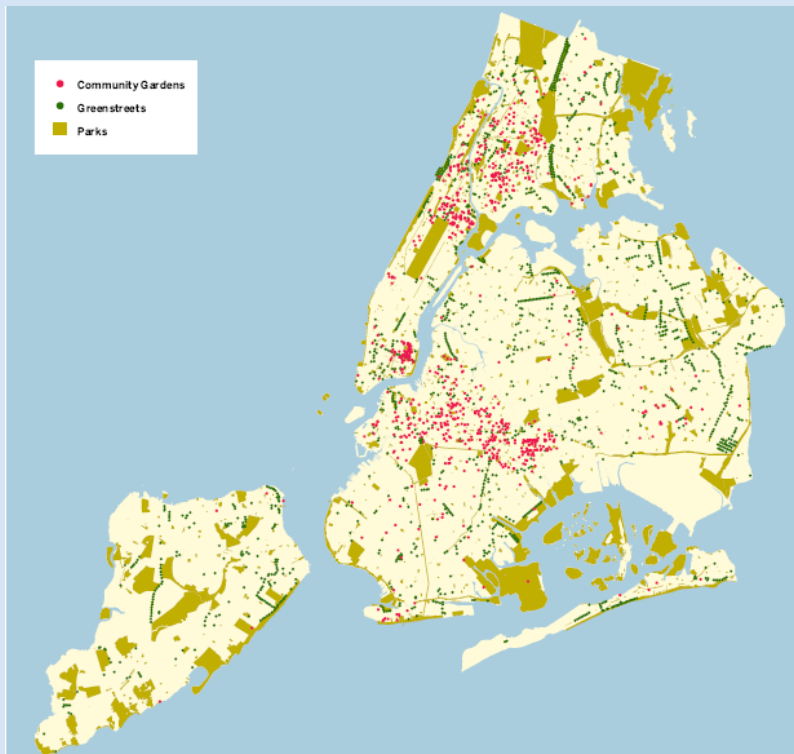


United States Department of Agriculture
Research, Education, and Economics

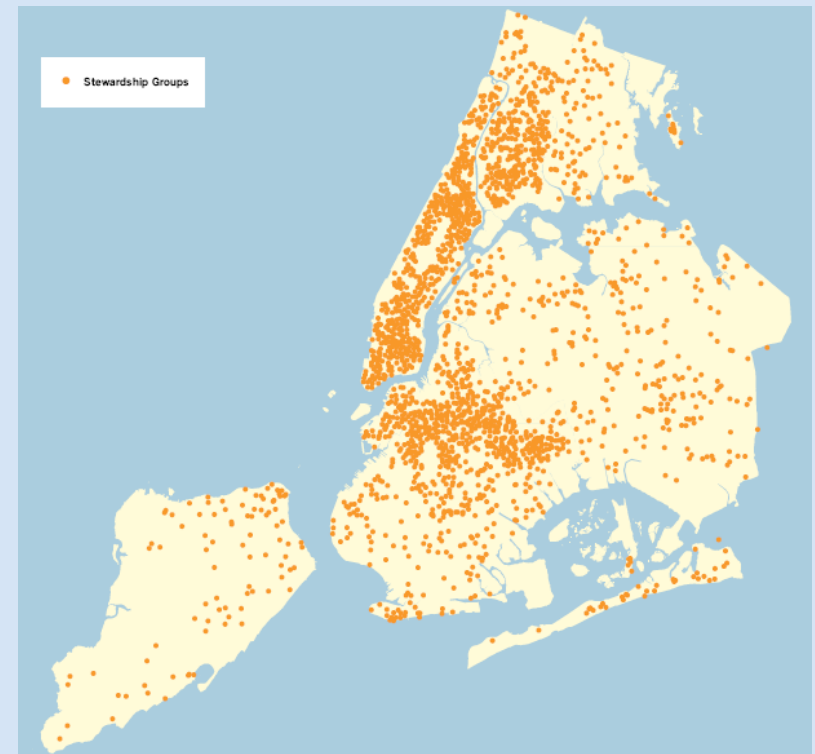


STEW-MAP: How do we understand the social and spatial interactions among actors working on urban stewardship?

Green Space



Social Space

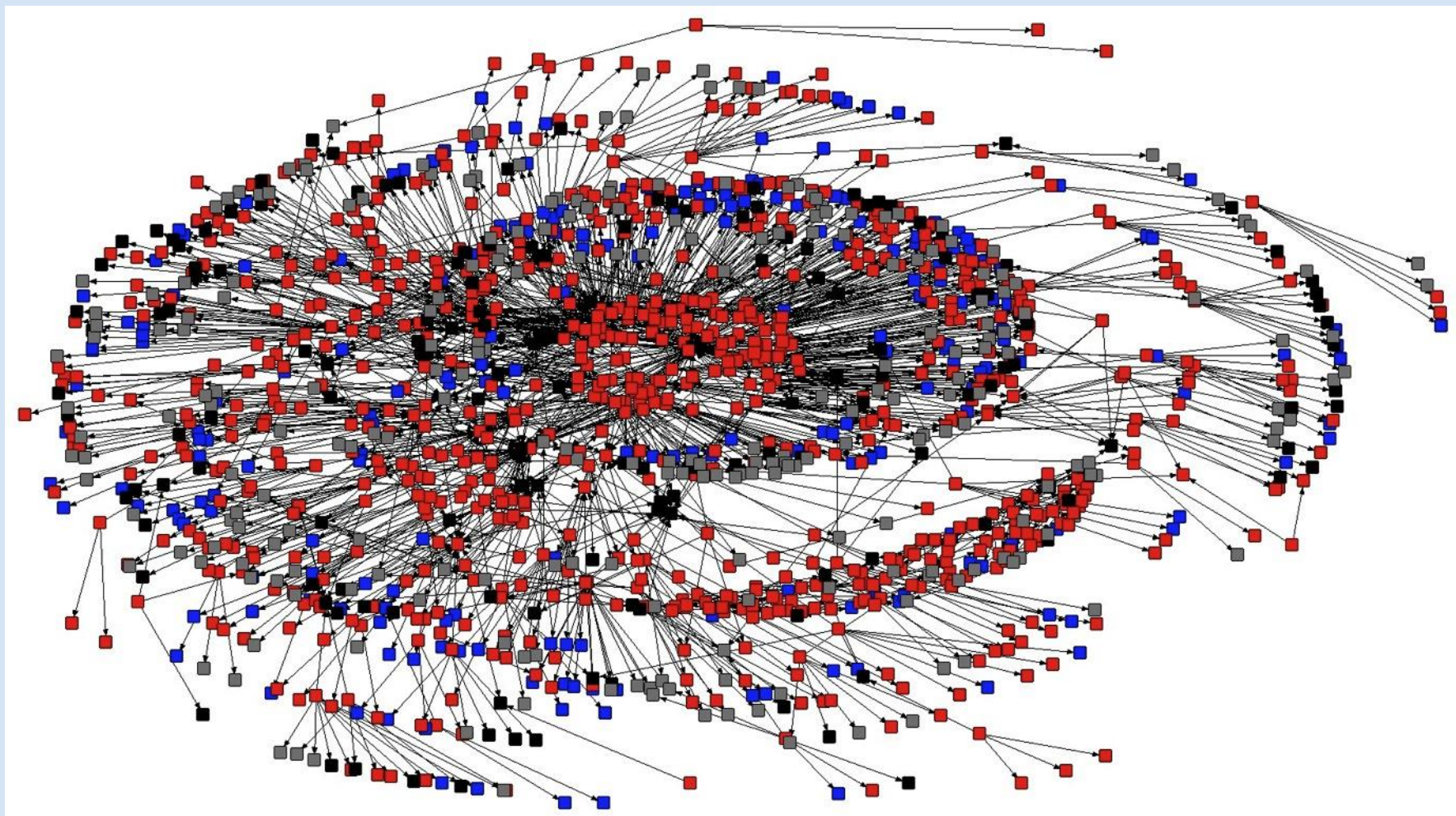




United States Department of Agriculture
Research, Education, and Economics



Stewardship Networks





What is USDA doing?

- Research in urban ecosystems – *e.g Baltimore LTER*
– *Linking the ecological and societal disciplines*
- Developing decision tools – *iTree and STEW-MAP*
- **Rethinking agricultural systems – *maturation from community gardens for subsistence to a new meaning of “local”—[NIFA investments]***
- Reconnecting rural to urban – *the Urban Waters Partnership*



United States Department of Agriculture
Research, Education, and Economics



Milan's Vertical Forest: The Bosco Verticale



The Bosco Verticale is a system that optimizes, recuperates, and produces energy.

Covered in plant life, the building aids in balancing the microclimate and in filtering the dust particles contained in the urban environment.

All photos: Marco Garofalo for Boeri Studio



What is USDA doing?

- Research in urban ecosystems – *e.g Baltimore LTER*
– *Linking the ecological and societal disciplines*
- Developing decision tools – *iTree and STEW-MAP*
- Rethinking agricultural systems – *maturation from community gardens for subsistence to a new meaning of “local”—[NIFA investments]*
- Reconnecting rural to urban – *the Urban Waters Partnership - → Green-Duwamish watershed near Seattle and salmon recovery*



United States Department of Agriculture
Research, Education, and Economics

What's Next?





Incorporating environmental stewardship into community engagement

- Groups that:
 - Conserve
 - Manage
 - Monitor
 - Advocate for and
 - Educate their



friends, neighbors, and representatives about their local environments (including water, land, air, waste, toxics, and energy issues).



ULTRA-Ex

Urban Long-Term Research Area (Exploratory)

- NSF/USFS joint funding
- Focus: research on dynamic interactions between people and natural ecosystems in urban settings in ways that will advance both fundamental and applied knowledge.
- Funding for 21 sites
 - Funding started in 2009 or 2010
 - Grant duration: 2 years
 - Size of grants: \$59K to \$300K
 - Average grant: \$258K



ULTRA-Ex Locations

- 15 east of Mississippi R.
- 6 west of Mississippi R.
- Most are place-based studies
- A few are gradient or regional studies (e.g. Southwest Gradient and Syracuse-Rust Belt)

