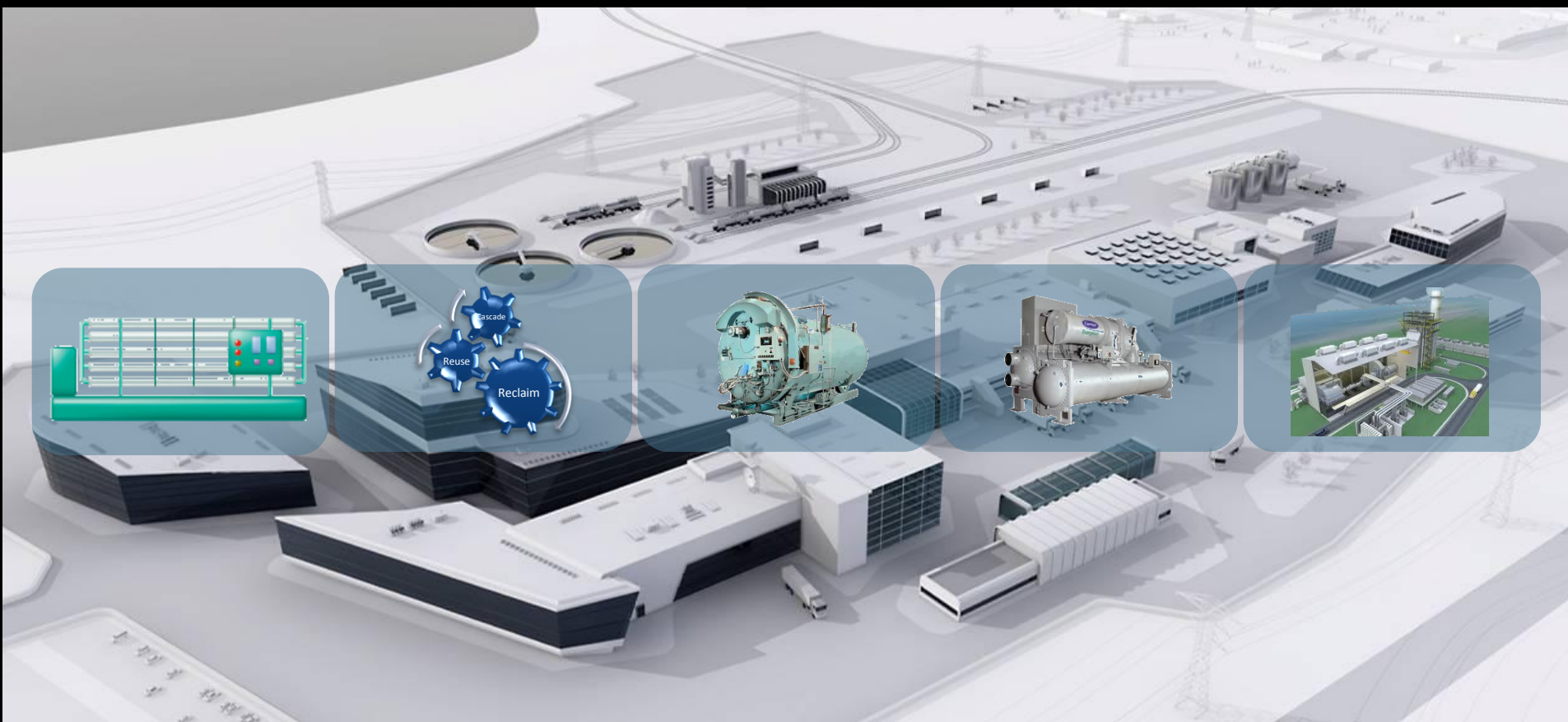
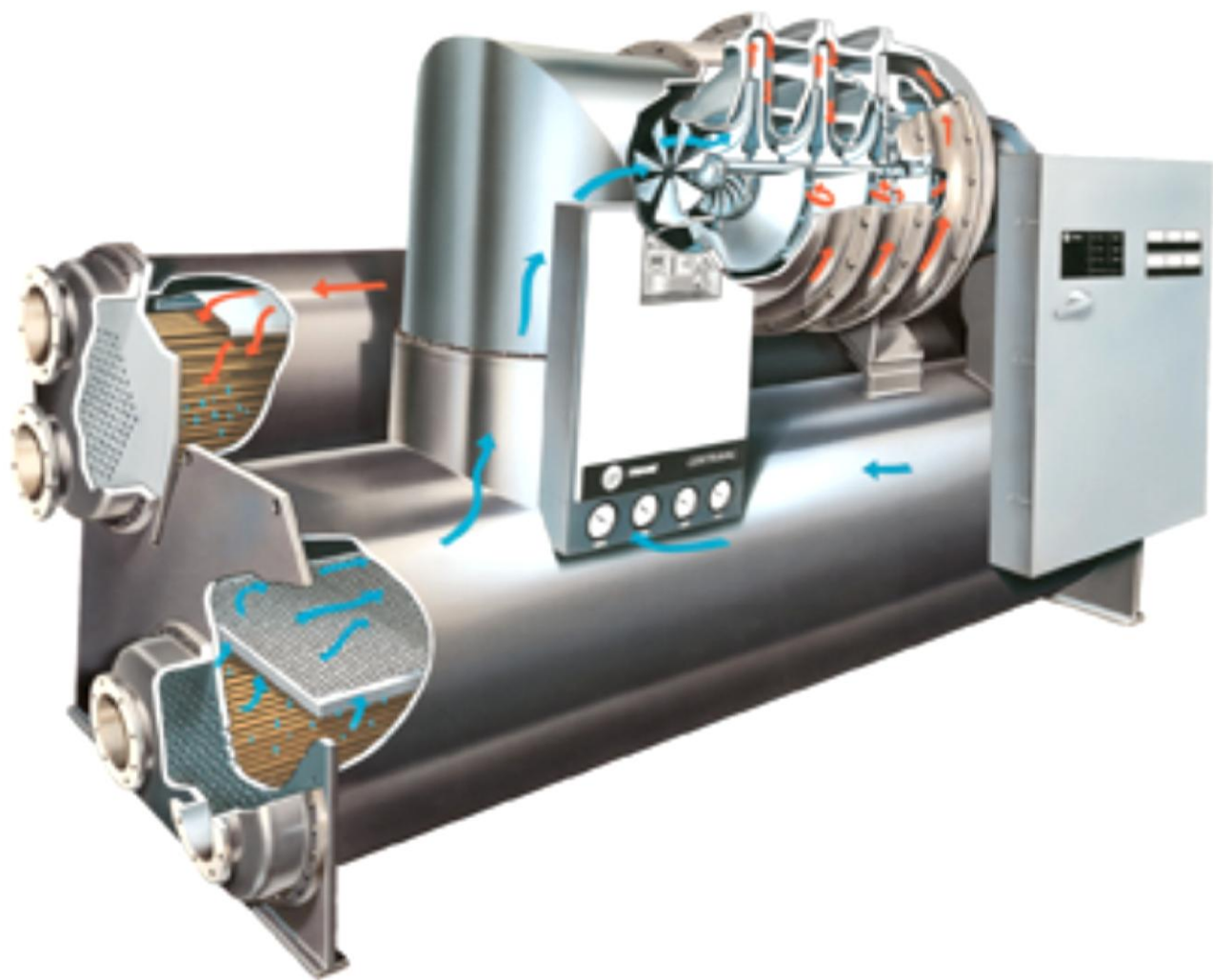
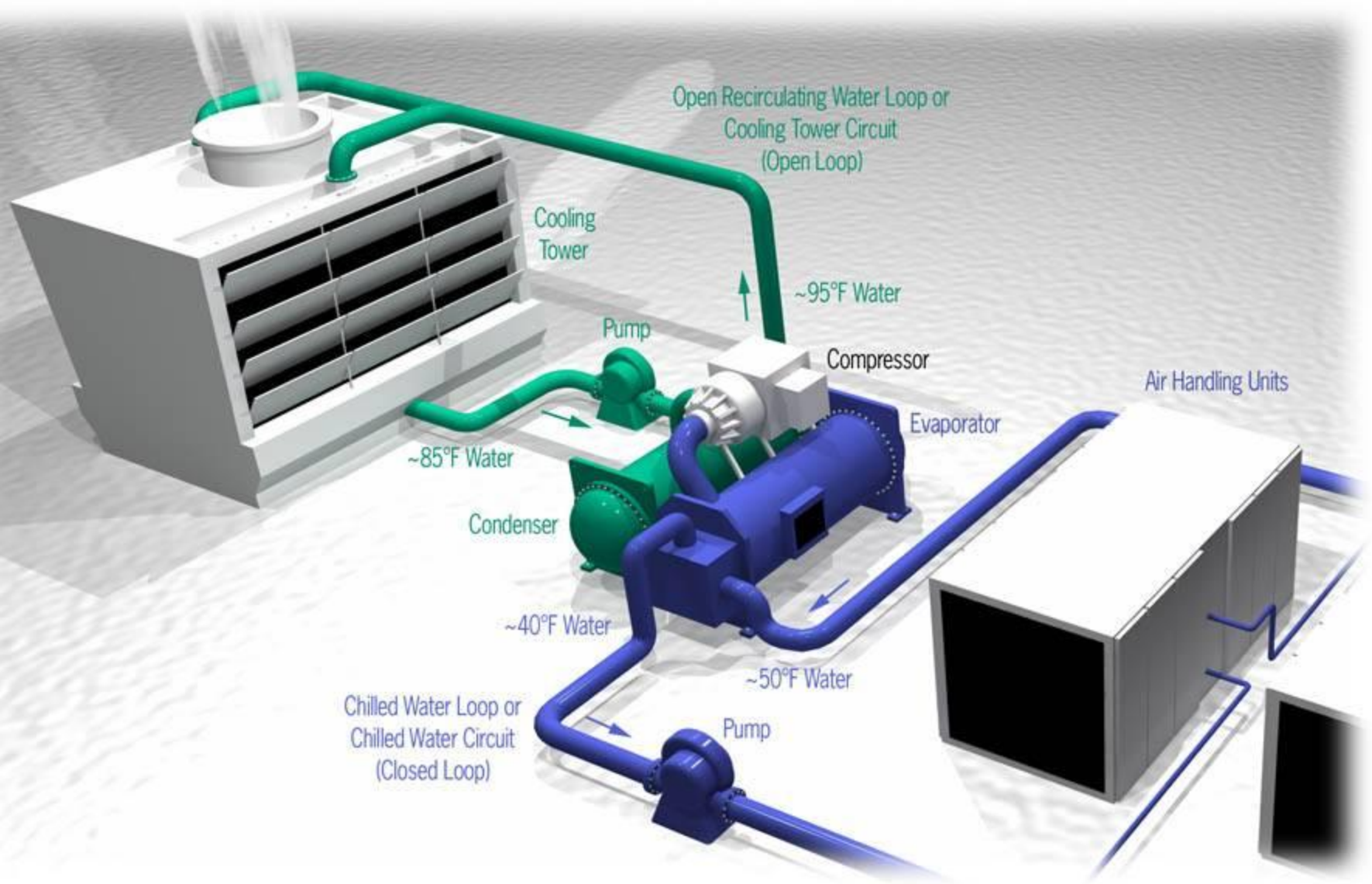


$$E = \cancel{mc^2}^{H_2O}$$



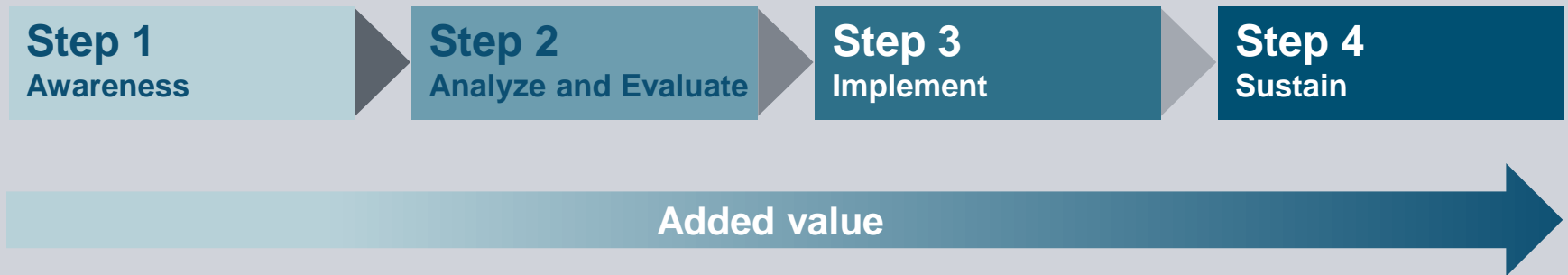






**A holistic approach  
identifies, evaluates and realizes improvements**

**SIEMENS**





## What others have achieved

- Improve productivity by up to 7%
- Decrease energy consumption by as much as 30%\*
- Reduce water consumption by up to 50%\*
- Lower waste water production by as much as 75%\*
- “Maintain the gains” through continued long-term improvements

\* Per unit produced





Industrial Control System – Cyber Security



# Cyber threat is a serious challenge facing US industry & infrastructure today

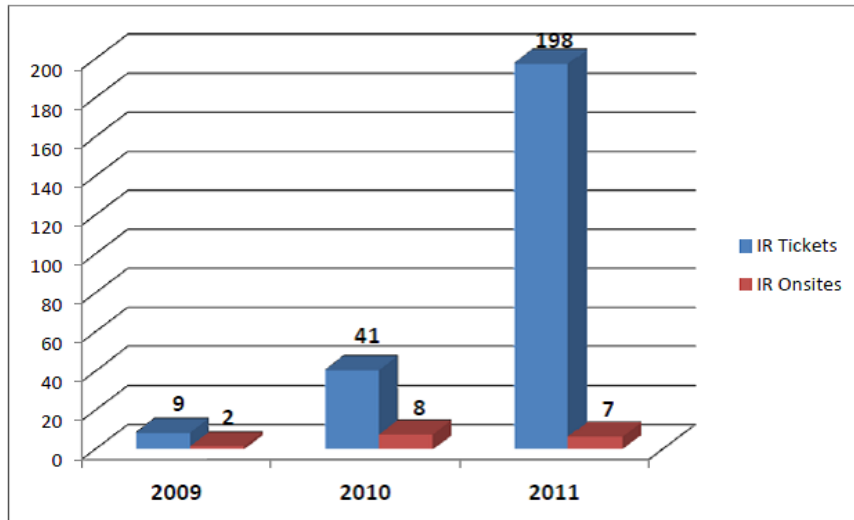
The ICS-CERT Incident Summary Annual Report tells the story



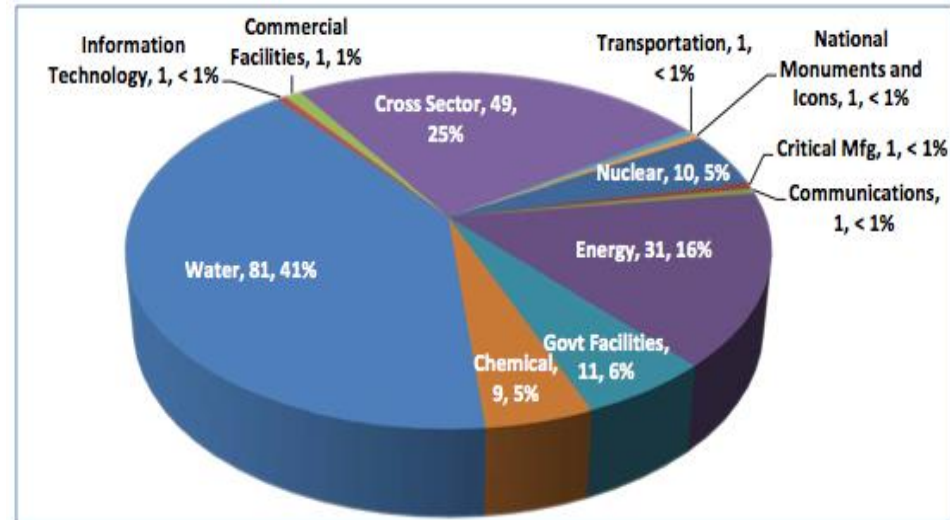
Cyber threats to Industrial Control Systems (ICS) are on the rise



There is a critical need to protect our critical infrastructure from cyber attacks



ICS-CERT incident response trends data



Incident reports by sector (2011)

# Cyber Security incidents can have devastating consequences and lasting impact

**SIEMENS**

## 2000 – Maroochy Water Shire Attack

Vitek Boden used radio equipment to hack into a water treatment system. Caused over 211,000 gal. of raw sewage to spill into local parks, rivers and the grounds of a Hyatt Regency.

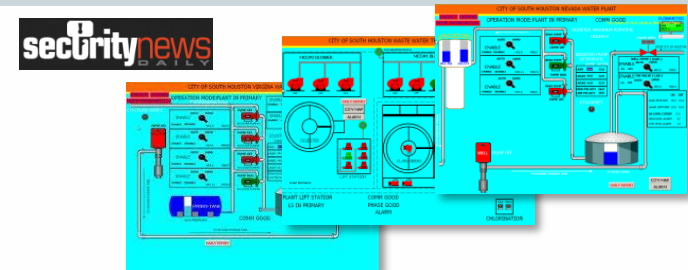


**NIST**  
National Institute of  
Standards and Technology  
U.S. Department of Commerce



## 2011 – Texas Water Treatment Plant

Hacktivist “pr0f” claims to hack Texas water treatment plant in South Houston. Published screen shots from SCADA on the Internet to raise awareness.



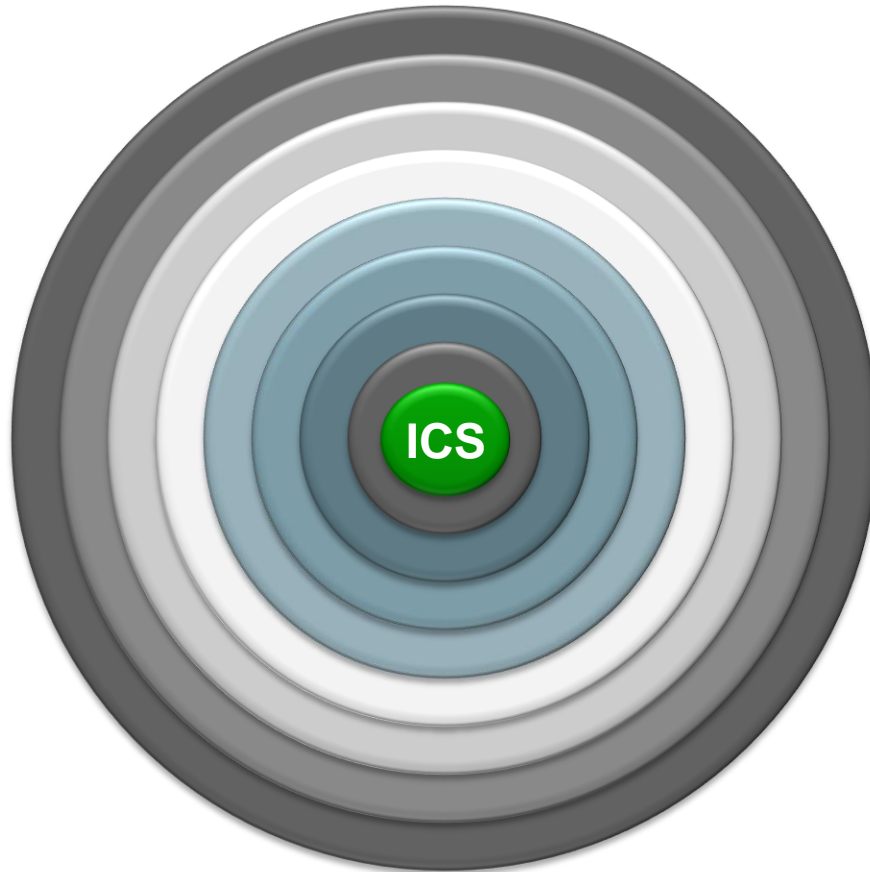
## March 2013 – TREND Micro SCADA Honeypot

In the course of 28 days, 39 attacks from 14 countries.  
12 classified as targeted. 13 repeated by same attacker.  
35% of attacks from China



**TREND**  
M I C R O

# The Defense in Depth Concept



## Plant security

- Access blocked for unauthorized persons
- Physical prevention of access to critical components

## Network security

- Controlled interfaces between office and plant network e.g. via firewalls
- Further segmentation of plant network

## System integrity

- Antivirus and whitelisting software
- Maintenance and update processes User authentication for plant or machine operators
- Integrated access protection mechanisms in automation components

Industrial Security levels according to current standards and regulations

**Security solutions in an industrial context must take account of all protection levels**

**SIEMENS**

