

Research Funding Opportunities at the National Institutes of Health

*USAID MENA Research Partners' Forum
Amman, Jordan*

*Marie D. Ricciardone, PhD
Senior Advisor MENA
Center for Global Health*

National Institutes of Health

- Mission: seek fundamental knowledge about nature and behavior of living systems; and apply that knowledge to enhance health, lengthen life and reduce illness and disability



National Institutes of Health

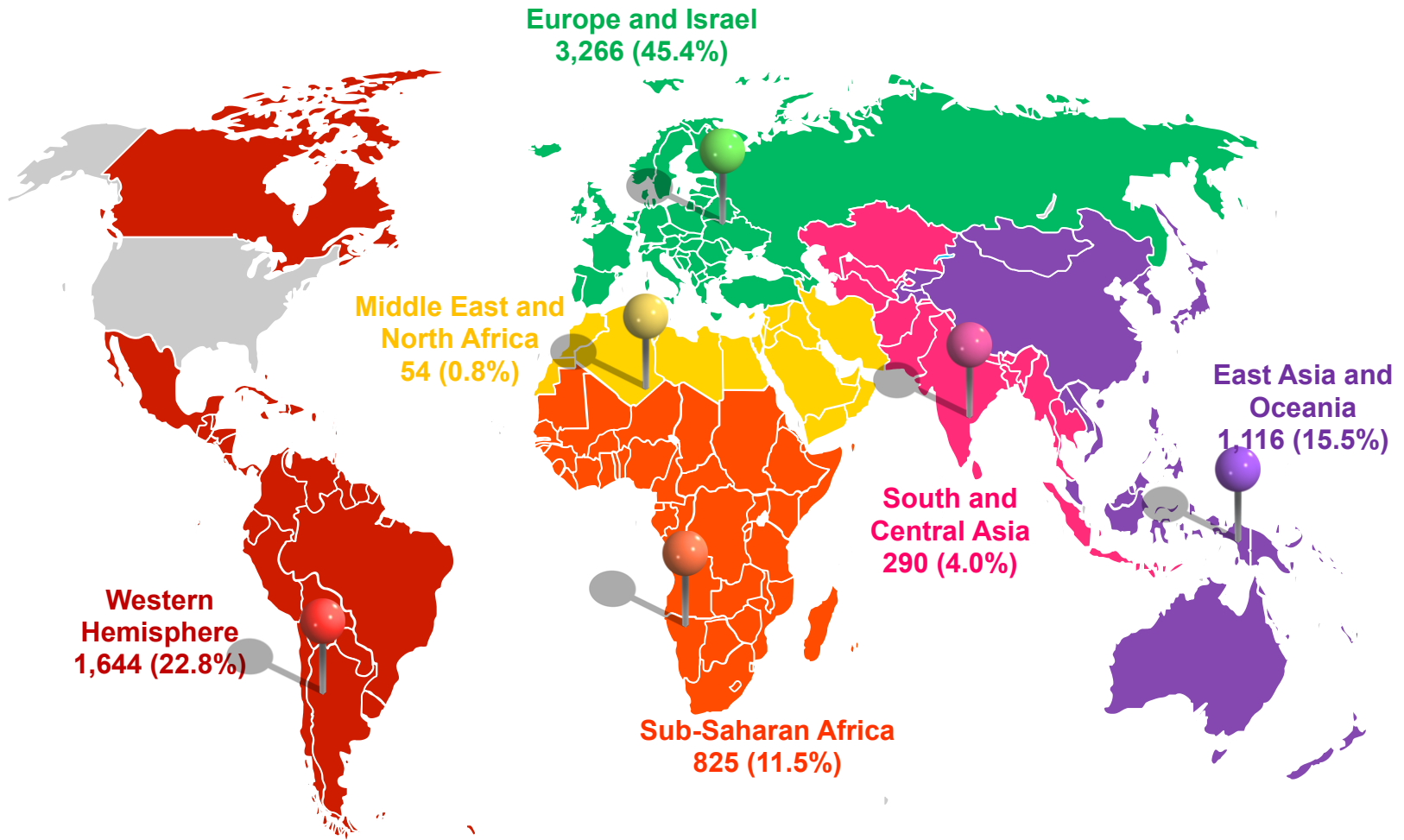
- Largest biomedical research agency in the world
Annual budget ~ 33 billion USD
- Research program
 - Causes, diagnosis, prevention and cure of human diseases
 - Processes of human growth and development
 - **Biological effects of environmental contaminants**
 - Understanding of mental, addictive and physical disorders
 - Collection, dissemination and exchange of health information
- Global research funding
 - Directly through international awards
 - Indirectly through foreign components of domestic awards

The National Institutes of Health

Office of the Director



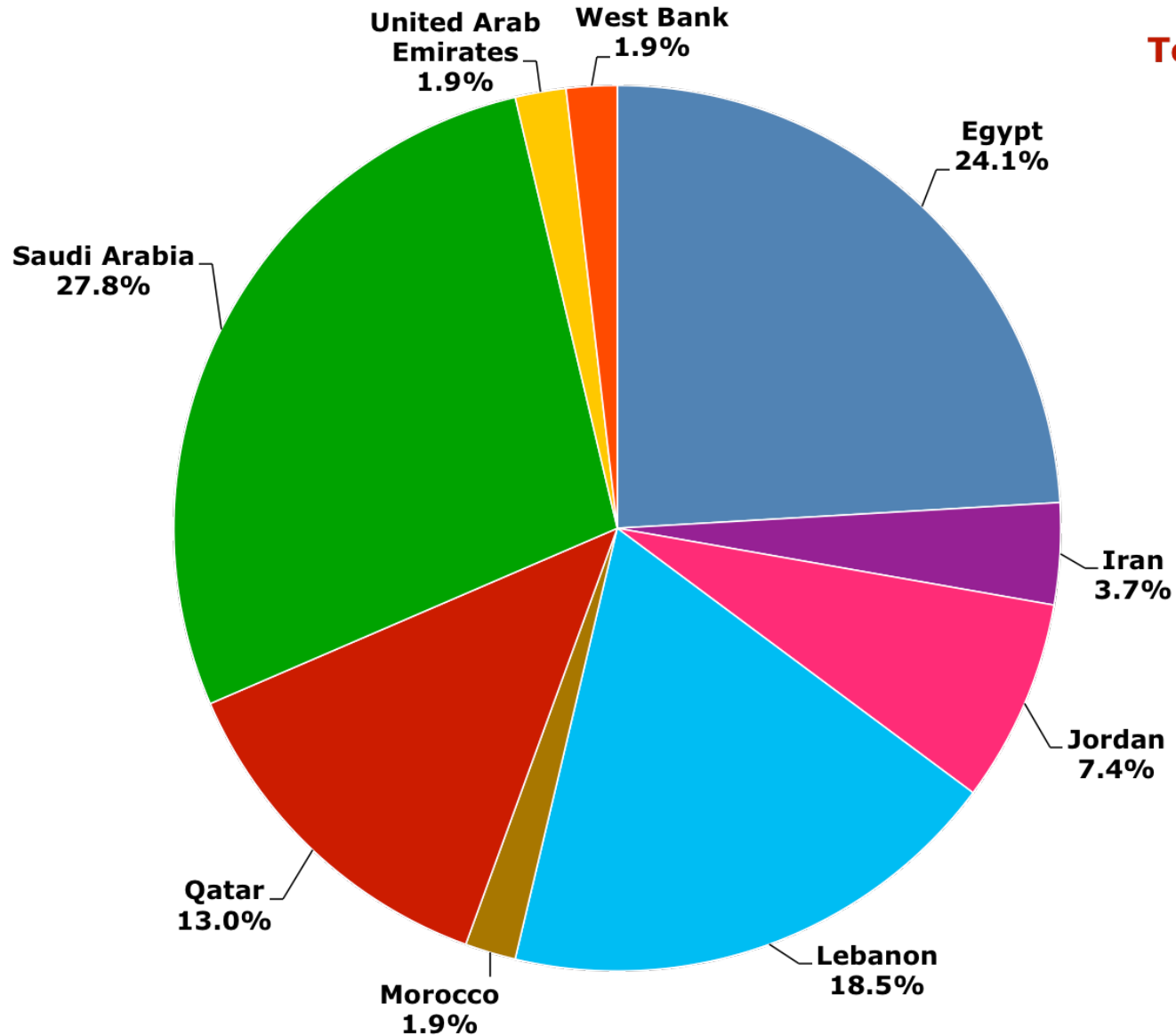
NIH Extramural Awards By Region, FY 2015



Total: 7,195 in 145 Countries/Entities

Which MENA countries received the highest number of NIH research awards?

NIH Extramural Awards in MENA by Country, FY 2015



Total: 54

Where do you find NIH grant opportunities?



Grants & Funding



Funding Opportunities

- Funding Opportunities (RFAs, PAs) & Notices
- Unsolicited Applications (Parent Announcements)
- Research Training & Career Development
- Small Business (SBIR/STTR)
- Contract Opportunities

NIH-Wide Initiatives

- New and Early Stage Investigators
- Stem Cell Information
- NIH Common Fund
- OppNet (Behavioral & Social Sciences)

Award Data

- NIH Reports (RePORT)
- Search NIH Awards (RePORTER)

Funding Opportunities and Notices

The **NIH Guide for Grants and Contracts** is the official publication for NIH medical and behavioral research grant policies, guidelines and funding opportunities. [Definitions and More Information...](#)

Search the NIH Guide for:

- Active RFAs** (Requests for Applications)
- Active PAs** (Program Announcements)
- Notices**

With Announcement # or Keywords: (Optional)

[Advanced Search](#)

Related Resources

- [Grant Application Basics](#)
- [Grants Process Overview](#)
- [Submitting Your Application](#)
- [Applying Electronically](#)
- [Electronic Research Admin \(eRA Commons\)](#)
- [NIH Financial Operations \(w/Funding Strategies\)](#)
- [Archive of Selected Policy Notices \(1993 - Present\)](#)

[Related Archives](#)

HHS OIG Hotline

REPORT FRAUD

oig.hhs.gov



Browse Active Funding Opportunities

- [Requests for Applications \(RFAs\)](#)
- [Program Announcements \(PAs\)](#)
- [Parent Announcements \(unsolicited applications\)](#)

Browse Recent Policies and Guidelines Notices

<http://grants.nih.gov/grants/guide/index.html>

Environmental Health Funding Opps



Grants & Funding



Search Funding Opportunities and Notices

[<--Back to Advanced Search](#)

Search Results

Matching Records: 6

Show: Active Only

Search Terms: environmental health

Include Notices: Yes No

Expired Active

"NEW" - Now you can save your query and have updated results sent to you periodically. [Learn more.](#)

[Save this Search](#)

Title	FOA/Notice Number	Related	Issuing Org	Released	Opens	Expires	Activity Code
Developing a Food Protection Rapid Response Team (RRT) (U18)	RFA-FD-16-032	Related	FDA	03-09-2016	03-16-2016	05-17-2016	U18
Environmental Health Sciences Core Centers (EHS CC) (P30)	RFA-ES-16-001	Related	NIEHS	02-03-2016	04-06-2016	05-07-2016	P30
Outstanding New Environmental Scientist (ONES) Award (R01)	RFA-ES-15-020	Related	NIEHS	10-27-2015	01-26-2016	02-28-2018	R01
Superfund Hazardous Substance Research and Training Program (P42)	RFA-ES-15-019	Related	NIEHS	09-17-2015	03-11-2016	04-12-2016	P42
Mechanism for Time-Sensitive Research Opportunities in Environmental Health Sciences (R21)	PAR-13-136	Related	NIEHS	03-07-2013	04-01-2013	06-02-2016	R21
Transition to Independent Environmental Health Research (TIEHR) Career Development Award (K22)	PA-12-188	Related	NIEHS	05-16-2012	09-12-2012	05-08-2017	K22

How can you find NIH / NIH-funded collaborators?

NIH Matchmaker



Research Portfolio Online Reporting Tools
(RePORT)

Search

[HOME](#) | [ABOUT RePORT](#) | [FAQs](#) | [GLOSSARY](#) | [CONTACT US](#)

QUICK LINKS

RESEARCH

ORGANIZATIONS

WORKFORCE

FUNDING

REPORTS

LINKS & DATA

[Home](#) > [RePORTER](#) > [Query Form](#)

MyRePORTER

[Login](#) | [Register](#)

System Health: ■ GREEN



NIH RePORTER

Version: 7.8.0

CHECK OUT FEDERAL RePORTER



[About RePORTER
DATA](#)

[FAQ](#)

[EXPORTER](#)

[RePORTER
Manual](#)

[RSS of Newly
Added Projects](#)



QUERY

BROWSE NIH

MATCHMAKER BETA

SUBMIT QUERY

CLEAR QUERY

Fiscal Year (FY):
Current FY is 2016

Active Projects

SELECT

RESEARCHER AND ORGANIZATION

Principal Investigator (PI) /
Project Leader:

(Last Name, First Name)

Use '%' for wildcard in PI names

[Enter several PI/Project Leader names OR PI Profile IDs](#)

Organization:

 LOOKUP

Please enter at least 3 characters to use Lookup.

Contains Begins with Exact

Department:

 SELECT

Organization Type:

 SELECT

City:

Use '%' for wildcard

State:

 SELECT

Country:

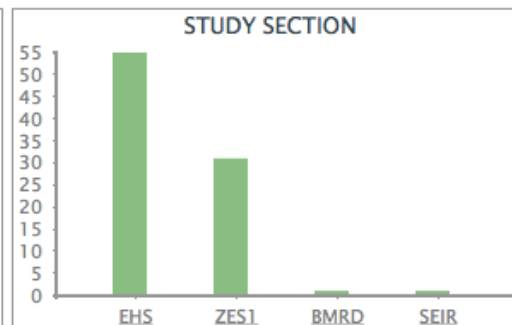
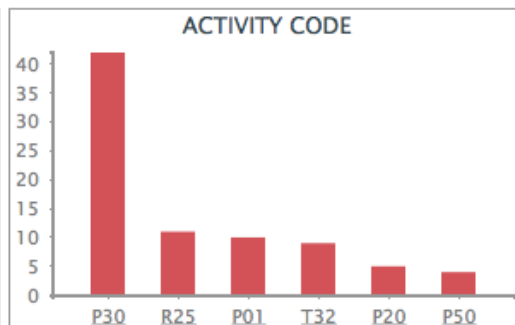
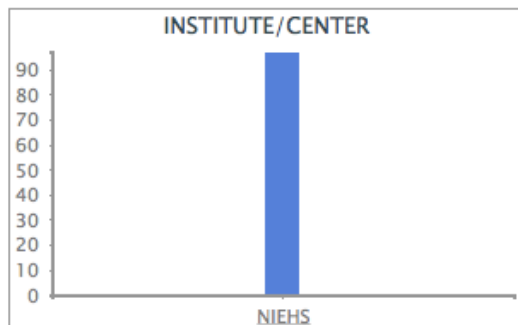
 SELECT

Congressional District:

 SELECT

DUNS Number:

Matchmaker: Environmental Health (n=97)



Click on the column header to sort the results

Records per page 25 1 2 3 4

[Click here to view detailed Charts](#)

1 of 4 [Next](#) [Last](#) ▶ ▶▶

T: Application Type; Act: Activity Code; Project: Admin IC, Serial No.; Year: Support Year/Supplement/Amendment

<input type="checkbox"/>	Match Score	T	Act	Project	Year	Sub #	Project Title	Contact PI / Project Leader	Organization	FY	Admin IC	Funding IC	FY Total Cost by IC	Similar Projects
<input type="checkbox"/>	217	5	P30	ES002109	35	7506	GENOMICS FACILITIES CORE	LEVINE, STUART S	MASSACHUSETTS INSTITUTE OF TECHNOLOGY	2015	NIEHS		\$246,322	
<input type="checkbox"/>	217	5	P30	ES004184	23		CHILDREN'S ENVIRONMENTAL HEALTH SCIENCES CORE CENTER	PETERING, DAVID HAROLD	UNIVERSITY OF WISCONSIN MILWAUKEE	2010	NIEHS	NIEHS	\$1,631,453	
<input type="checkbox"/>	217	5	R25	ES016252	04		SUMMER TRAINING PROGRAM IN ENVIRONMENTAL HEALTH SCIENCES FOR HIGH SCHOOL AND UNDE	SPEAR, ROBERT C	UNIVERSITY OF CALIFORNIA BERKELEY	2011	NIEHS	NIEHS	\$56,455	
<input type="checkbox"/>	217	1	P50	ES026102	01	6820	COMMUNITY ENGAGEMENT CORE	GONZALES, MELISSA	UNIVERSITY OF NEW MEXICO HEALTH SCIS CTR	2015	NIEHS		\$90,229	
<input type="checkbox"/>	217	5	P30	ES007048	20	6402	CAREER DEVELOPMENT OF ENVIRONMENTAL HEALTH INVESTIGATORS	MCCONNELL, ROB S	UNIVERSITY OF SOUTHERN CALIFORNIA	2015	NIEHS		\$163,947	
<input type="checkbox"/>	217	5	R01	ES021726	03		DATA SHARING AND PRIVACY PROTECTION IN DIGITAL-AGE ENVIRONMENTAL HEALTH STUDIES	BRODY, JULIA GREEN et al.	SILENT SPRING INSTITUTE	2014	NIEHS	NIEHS	\$352,348	
<input type="checkbox"/>	217	5	P30	ES005605	25		ENVIRONMENTAL HEALTH SCIENCES RESEARCH CENTER	THORNE, PETER S	UNIVERSITY OF IOWA	2015	NIEHS	NIEHS	\$1,579,155	



Grants & Funding

<http://grants.nih.gov/grants/oer.htm>



About Grants

- [Grants Process Overview](#)
- [Grant Application Basics](#)
- [Types of Grant Programs](#)
- [How to Apply](#)
- [Peer Review Process](#)
- [Award Management](#)
- [Foreign Grants Information](#)
- [Funding Strategies](#)
- [Avoid Grant Scams](#)

Electronic Grants

- [Electronic Research Admin \(eRA\)](#)
- [eRA Commons](#)
- [Applying Electronically](#)

Forms & Deadlines

- [Forms & Applications](#)
- [Due Dates](#)
- [Submission Policies](#)
- [Submitting Your Application](#)



FUNDING

[Search NIH Guide for Grants and Contracts](#)

- [Funding Opportunities & Notices](#)
- [Unsolicited Applications \(Parent Announcements\)](#)
- [Advanced Search](#)

- [Recovery Act](#)
- [Research Training & Career Development](#)
- [Small Business \(SBIR/STTR\)](#)
- [Contract Opportunities](#)

- [NIH Loan Repayment Programs](#)
- [New and Early Stage Investigators](#)
- [Stem Cell Information](#)
- [NIH Common Fund](#)
- [OppNet \(Behavioral & Social Sciences\)](#)



Open Mike

[FY2015 by the Numbers, and a Quick Look at Recent Trends](#)

[Publication Impact of NIH-funded Research – A First Look](#)

[New to the World of NIH Grants? Attend a 2016 NIH Regional Seminar](#)

Latest News

[Getting Ready for Updated Forms \(FORMS-D\)](#)

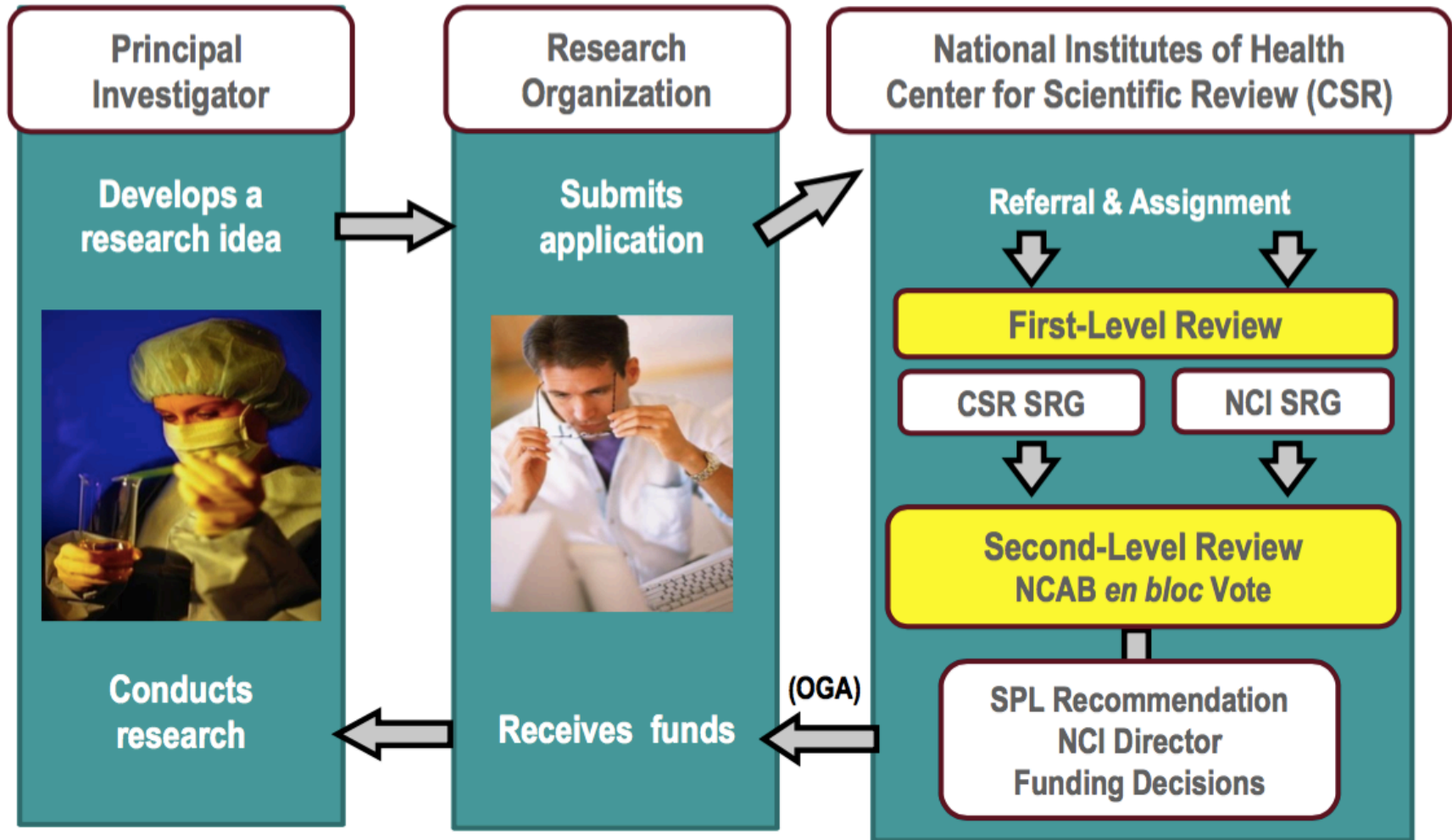
[Application Submission News – Jan. 5, 2016](#)

[Revised SF424 \(R&R\) Application Guides and Supplemental Instructions](#)

Upcoming Events

[03/17/2016 - Symposium on Social Housing of Laboratory Animals: March 17-18, Davis, CA](#)

NIH Grants Process Overview



Peer Review Criteria

Scored Items (1-9 scale)	Significance Investigator Innovation *Approach Environment Overall Impact: Assessment of the likelihood for the project to “exert a sustained, powerful influence on the research field(s) involved”
Score-Influencing Items	*Human Subjects Protection & Inclusion Factors *Vertebrate Animals Protection Biohazards Progress (for Type 2s) Response to Previous Critique (for A1s)
Non-Scored Items	Budget Resource/Data Sharing Plans Foreign Institutions Select Agents

1 = exceptional; 9 = poor

Chance of Getting Funded?

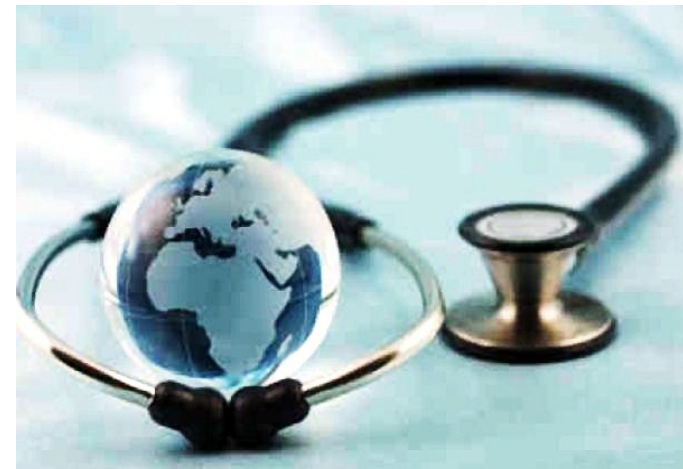
- Award rate: 17.0% (awards/applications reviewed)
- Peer review score
- Filling gaps in research portfolio
- Especially novel or promising scientific approach
- Commitment to new / early-stage investigators (R01)



Funding Opportunities for Global Cancer Research

Global Cancer Burden

- Cancer is a global epidemic and a leading cause of death worldwide, accounting for **7.6 million deaths** or around 13% of all deaths in 2008
- Worldwide, cancer now causes more deaths than HIV/AIDS, tuberculosis and malaria combined
- More than **70%** of all cancer deaths occur in low and middle-income countries (**LMIC**)
- Deaths from cancer worldwide are projected to continue to rise to over **13.1 million** in **2030**



National Cancer Institute

- Principal U.S. Government agency for cancer research and training
- Annual budget ~ 5 billion USD
- Supports research at cancer centers, hospitals, universities in the U.S. and around the world with grants and cooperative agreements
- Conducts research in its own labs
- Provides training in basic and clinical sciences via career awards, training grants and fellowships

WHAT WE DO



NCI Center for Global Health

- CGH established in 2011 to:
 - Strengthen global cancer research
 - Build global cancer research community
 - Translate research results into practice
 - Reduce cancer deaths worldwide
- CGH collaborates with:
 - U.S. government agencies
 - Foreign governments and institutions
 - Non-governmental organizations (NGOs)
 - NCI-designated Cancer Centers



Edward L. Trimble, MD, MPH

Scope of NCI Research



- Vast, complex enterprise
- Need to determine cause, diagnosis, prevention, cure
- Involves researchers from many different disciplines
- Relies on participation of patients and healthy volunteers

CGH Current Funding Opportunities¹

- [Supplements to Promote Clinical Research Studies on Pediatric Burkitt Lymphoma in LMIC \(Admin Supp\)](#) (PA-16-086) Pilot research projects on pediatric BL relevant to specific needs of the respective LMICs
- [Emerging Global Leader Award \(K43\)](#) (PAR-15-292) Mentored research career development for early stage investigators committed to a cancer research, including risk factors, translational research, diagnosis, surveillance, mHealth.
- [International Research Scientist Development Award \(K01\)](#) (PAR-15-291) Mentored research career development for early stage investigators committed to a cancer research, including risk factors, translational research, diagnosis, surveillance, mHealth.
- [Global Noncommunicable Diseases and Injury Across the Lifespan: Exploratory Research \(R21\)](#) (PAR-15-052) Exploratory research in cancer prevention, detection, diagnosis, treatment and survivorship; including risk factors, mHealth, health disparities, surveillance and implementation science.

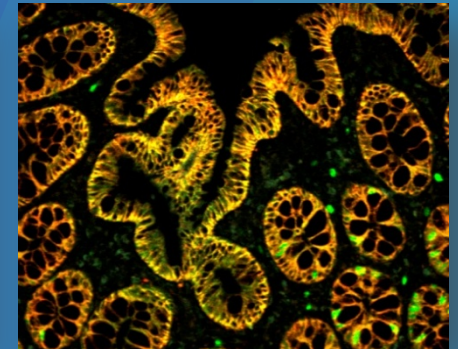
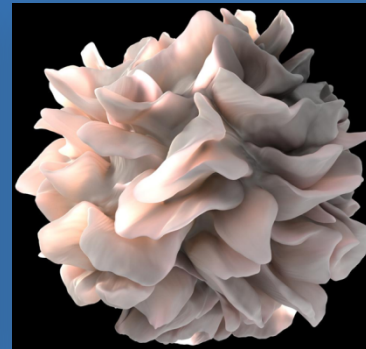
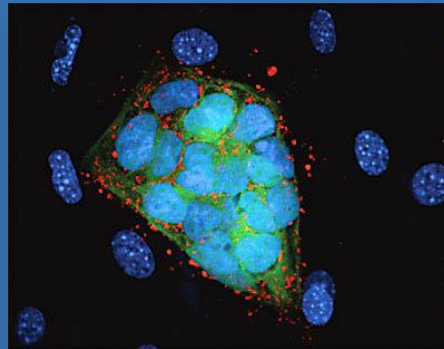
CGH Current Funding Opportunities²

- [Cancer Detection, Diagnosis, and Treatment Technologies for Global Health \(UH2/UH3\)](#) (RFA-CA-15-024) Adapt, apply and validate existing or emerging technologies into low-cost devices/assays for imaging, in-vitro diagnosis, prevention or treatment of cancers in LMIC.
- [Planning for Regional Centers of Research Excellence in Non-communicable Diseases in LMIC \(P20\)](#) (RFA-CA-15-007) Design RCRE for non-communicable diseases, including cancer, in LMIC, via collaborative partnerships between HIC and LMIC, with focus on basic, translational, clinical, and population science research.
- [Turkey-US Collaborative Program for Affordable Medical Technologies](#) (PAR-15-276) Develop affordable diagnostic and therapeutic technologies that address medical needs in LMIC.
- [Administrative Supplements to Promote Cancer Prevention and Control Research in Low and Middle Income Countries \(Admin Supp\)](#) (PAR-15-155) Pilot research project focused on cancer prevention and control involving NCI-designated cancer centers and LMIC institutions.



NIH

Turning Discovery into Health
National Cancer Institute
www.cancer.gov/globalhealth



Contact Information

Marie D. Ricciardone, PhD
Senior Advisor, Middle East, North Africa, Turkey
Center for Global Health
National Cancer Institute
9609 Medical Center Drive
Rockville, MD 20850
USA
Phone: +1.240.276.5151
Email: marie.ricciardone@nih.gov
Web: <http://www.cancer.gov/globalhealth>