



National Science Foundation

**Directorate for Engineering
Division of Industrial Innovation and Partnerships**

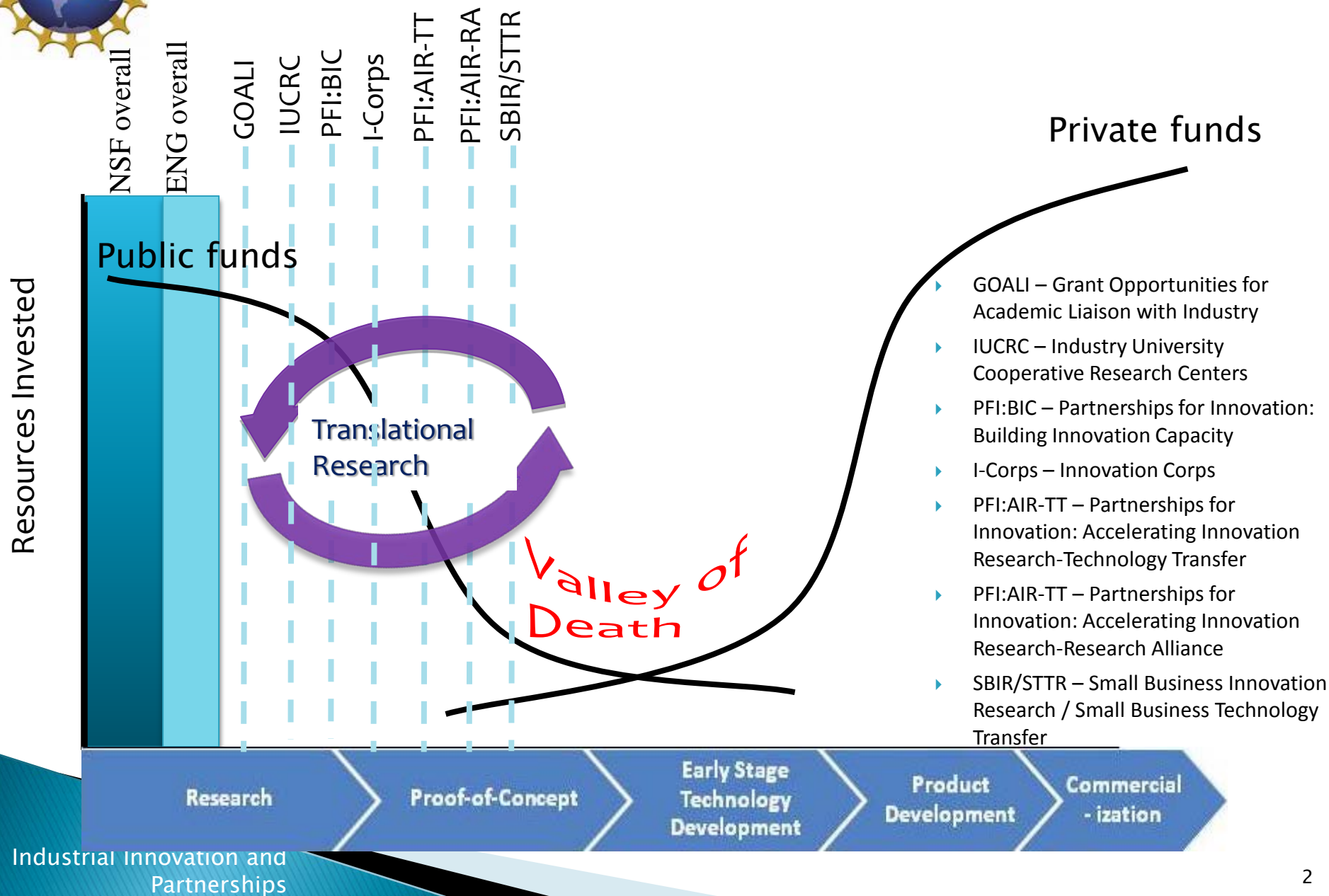
Barry W. Johnson, Ph.D.

Division Director

April 12, 2016

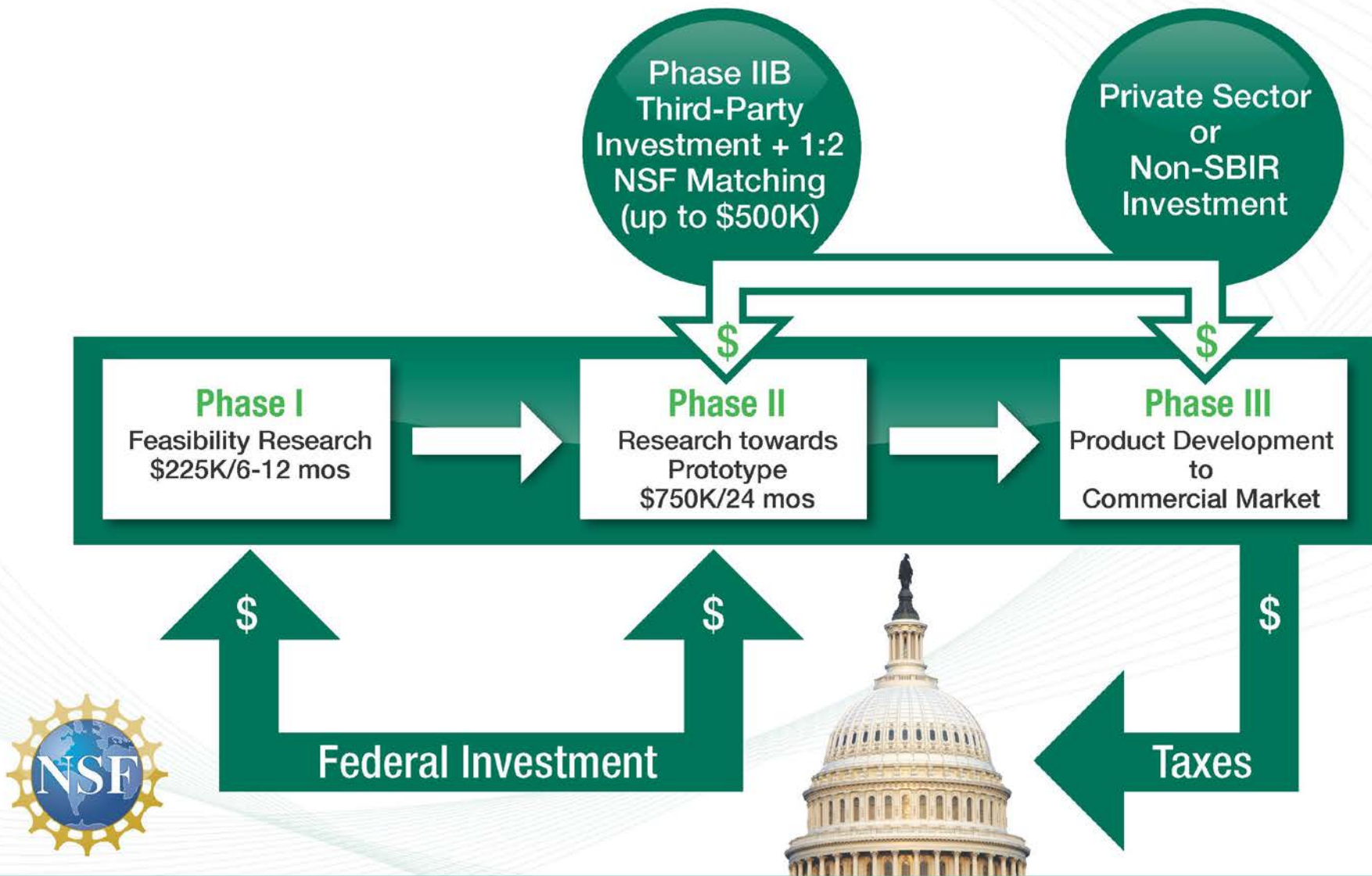


IIP Programs



NSF SBIR/STTR INNOVATION MODEL

Note: NSF does not fund Phase III.





Phase IIB History and Concept

- ▶ Introduced in 1998
- ▶ Supplement to a Phase II award
- ▶ Fills the gap between NSF funding and commercialization
- ▶ NSF funding ranges from \$50,000 to \$500,000
- ▶ NSF funds must be matched 2 to 1 with third-party funds
 - Private investment
 - Revenue
 - Public (non-NSF)
 - Strategic partner development funds
- ▶ In-person site visit to NSF with investor is required for more than \$250,000 from NSF



Questions and Contact

Barry W. Johnson, Ph.D.

Division Director

Division of Industrial Innovation and Partnerships

National Science Foundation

Email: bwjohnso@nsf.gov