



CLIMATE-INFORMED RESILIENCE PLANNING PUBLIC HEALTH RESOURCES

Marnie Boardman, Climate & Health Coordinator

Office of Environmental Public Health Sciences, WA Department of Health

Puget Sound Knowledge Exchange, January 26, 2018

Impacts of Climate Change on Human Health in the United States (2016, USGCRP)

health2016.globalchange.gov

- Changes in frequency, severity, duration and location of weather hazards will amplify existing health problems and introduce new ones.
- Health impacts are already being observed, and will grow.
- Every American is vulnerable.
- Some are disproportionately vulnerable.
- Impacts vary for different people, different communities and locations, by different degrees.

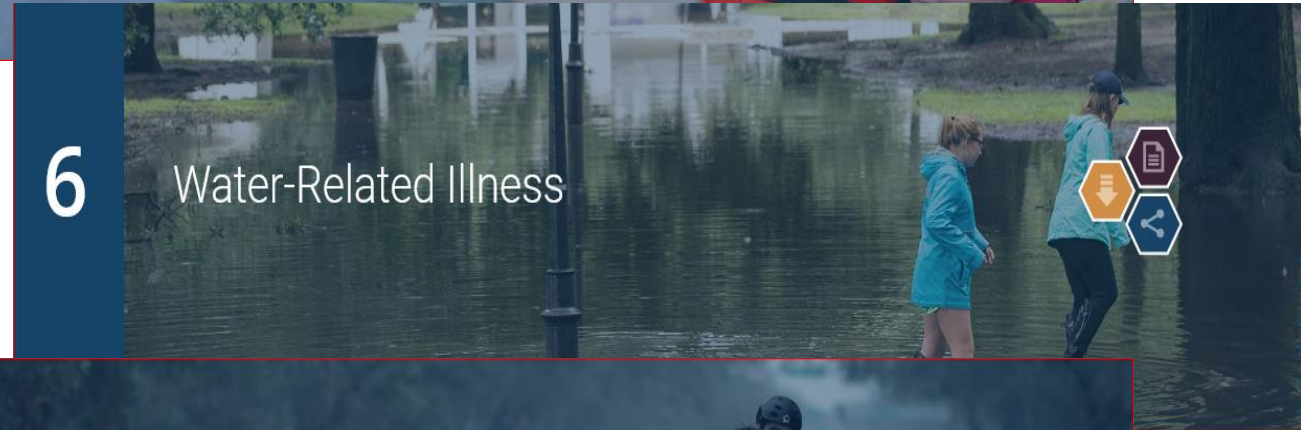
4

Extreme Events



6

Water-Related Illness



8

Mental Health and Well-Being

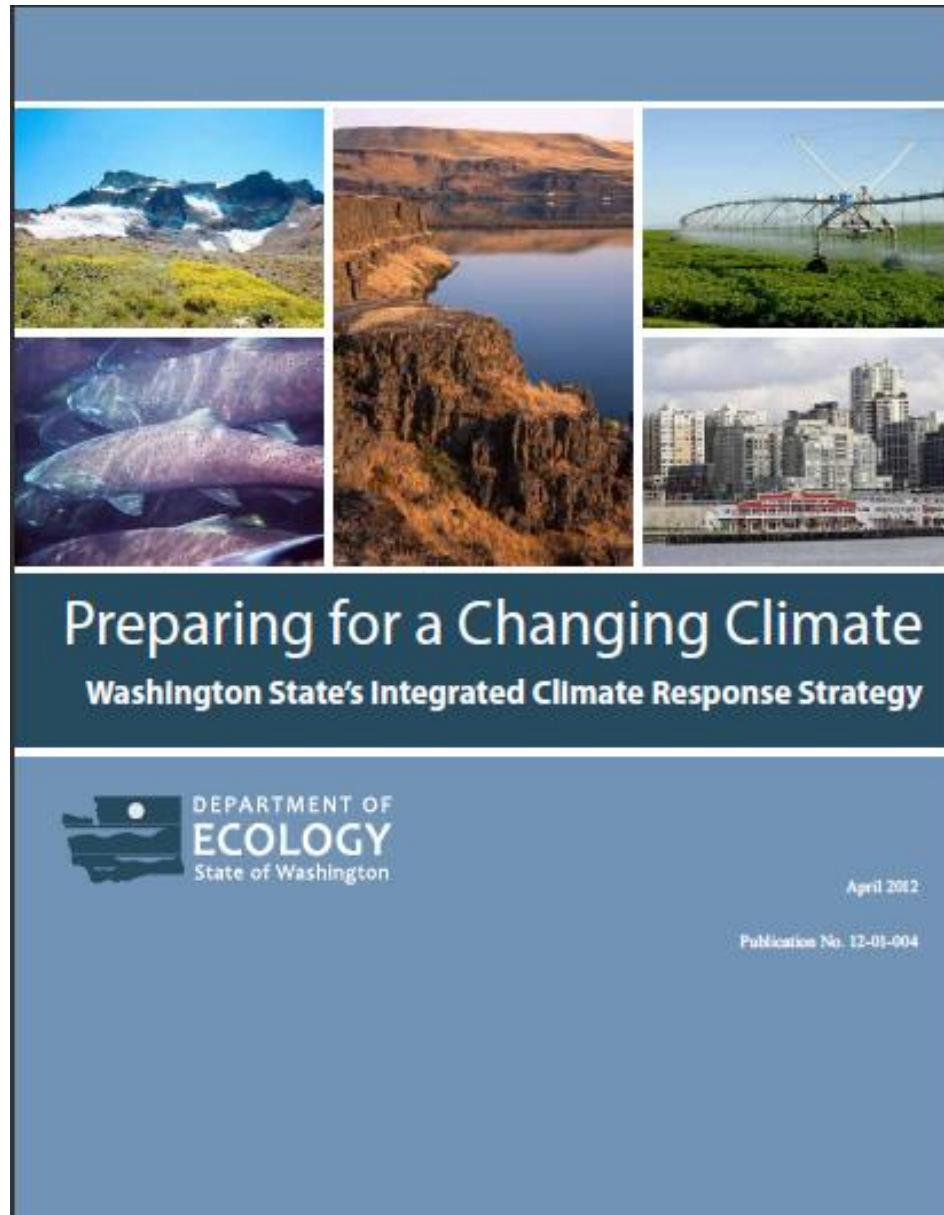


9

Populations of Concern



Washington's Integrated Climate Response Strategy



Health:

- Protect most vulnerable populations
- Enhance systems for early detection & response
- Put adaptation in health departments' strategic plans
- Engage & motivate citizens / partners to take action
- Grow capacity to safeguard human health

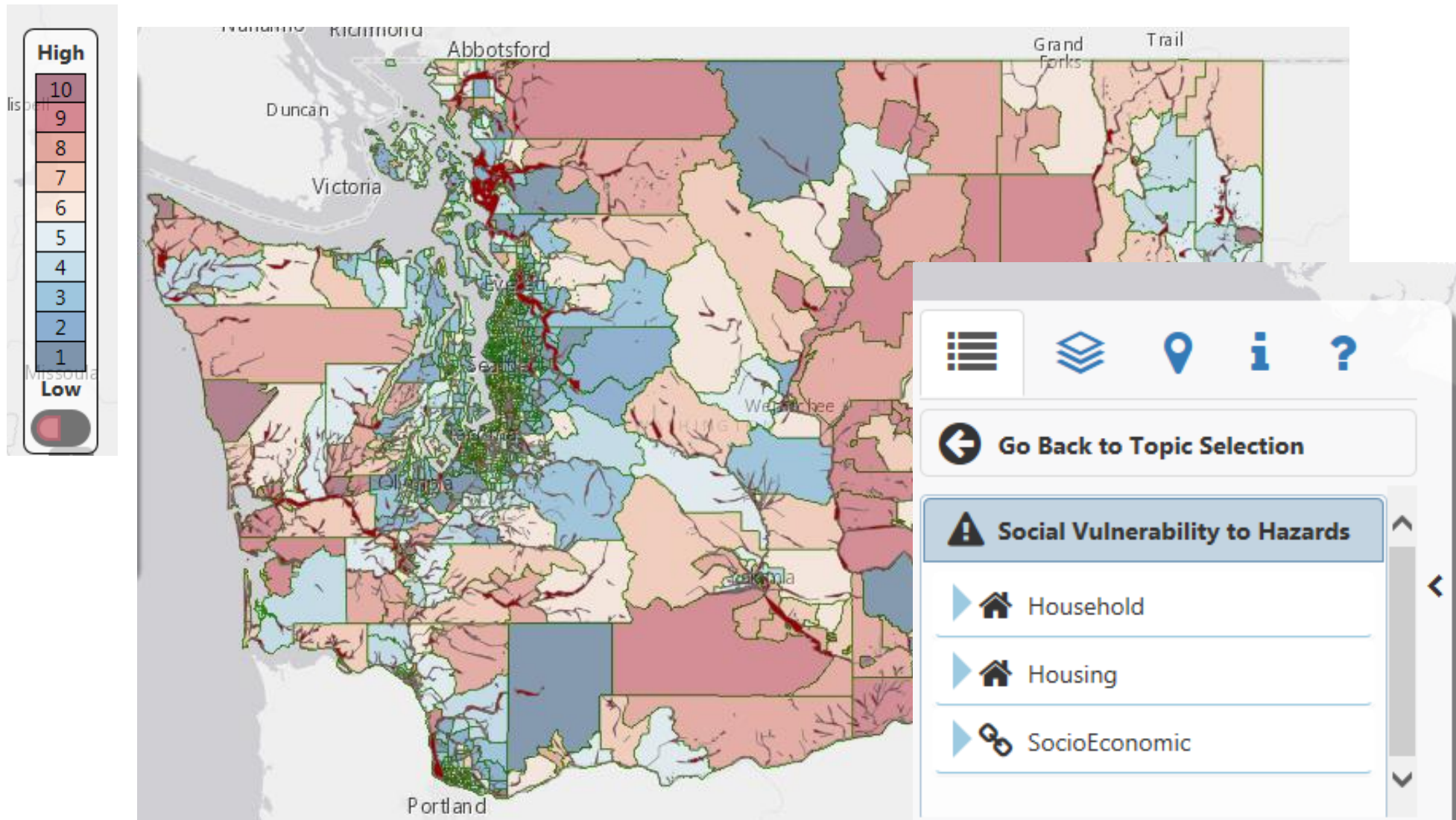
Protect vulnerable people & optimize health benefits

- I.D. vulnerable communities; provide assessment & tools
- Work with local health, planning, transportation and other local agencies:
 - Publicize shelters & response to heat, flood, extreme events
 - ↑ Transportation options and evacuation routes
 - ↑ Healthy built environments
 - Prevent new critical infrastructure in high risk areas



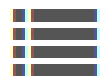
Washington Tracking Network (www.doh.wa.gov/WTN)

Topic Area: Social Vulnerability to Hazards Index



Washington Tracking Network

A Source for Environmental Public Health Data



Go Back to Topic Selection



Household

Limited English 

Population 65+ Living Alone 

Population with a Disability 

Single Parent Household 

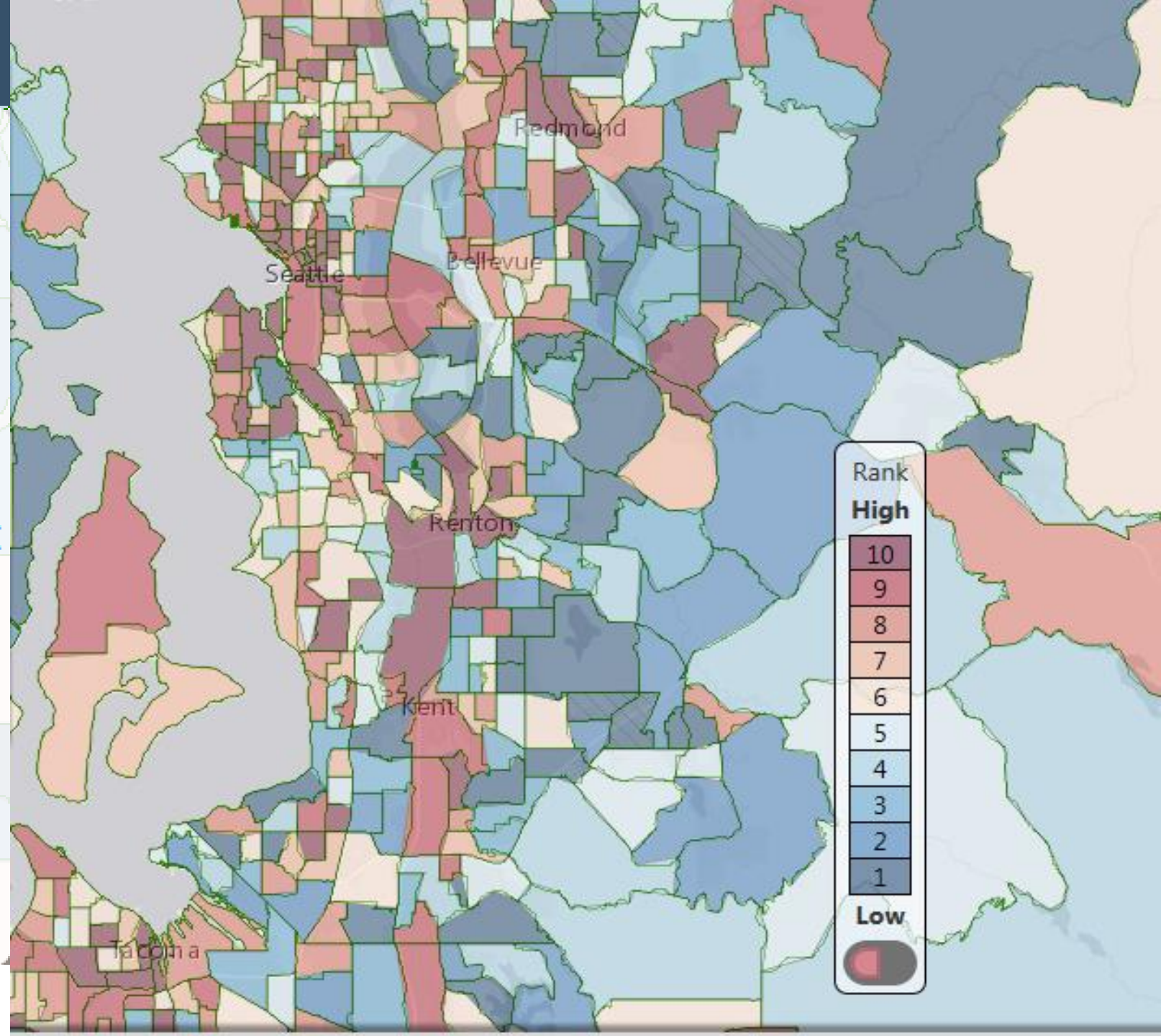


Housing



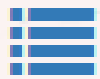
Data Not Reliable for some locations.

www.doh.wa.gov/WTN



Washington Tracking Network

A Source for Environmental Public Health Data



Map Features



2015 Wildfire Burn Area



100-year Flood Zone



Water Resource Inventory Areas



Care Facilities - Adult Family Homes

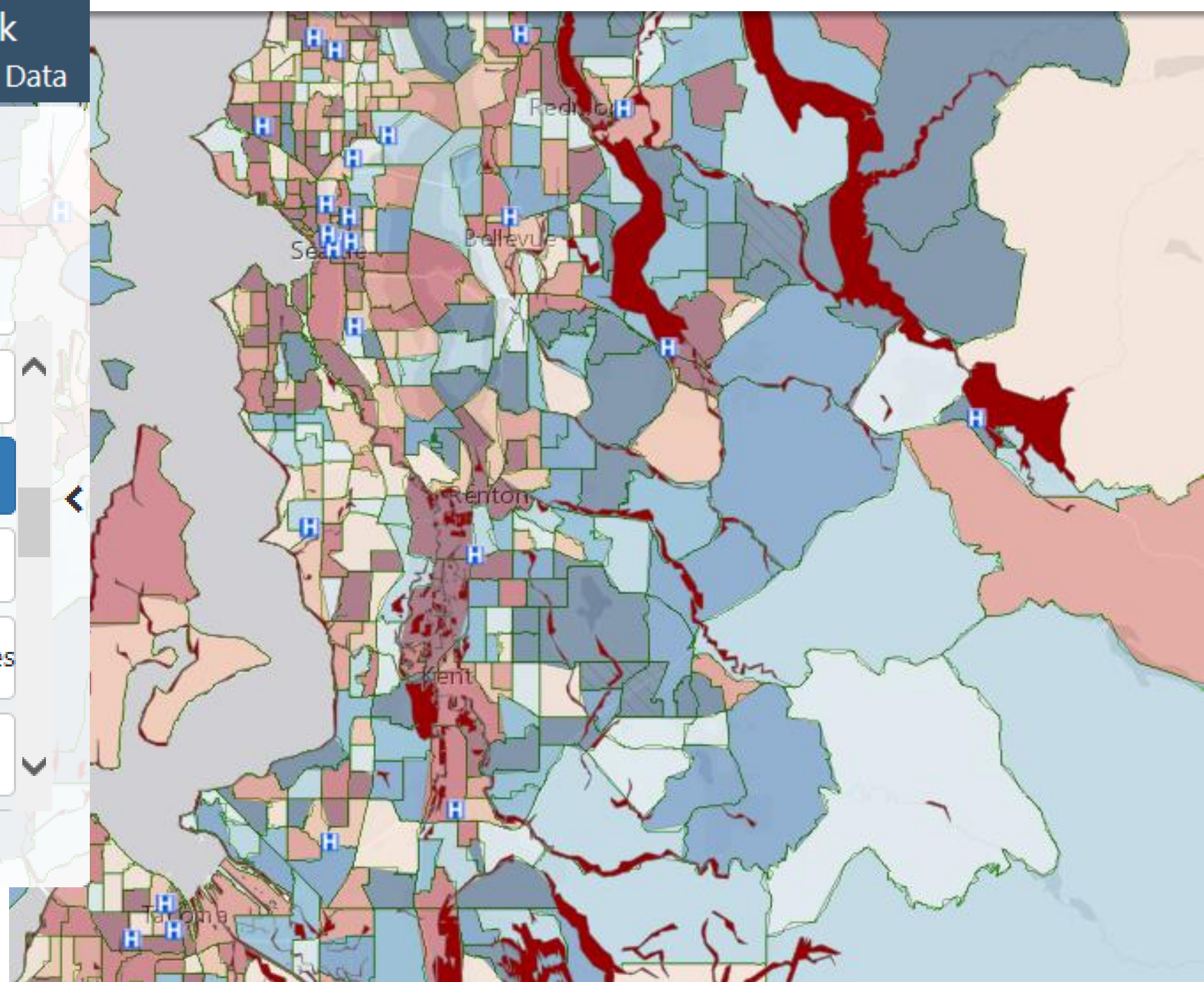


Care Facilities - Assisted Living



Data Not Reliable for some locations.

www.doh.wa.gov/WTN

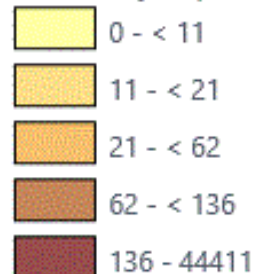


Washington Tracking Network

A Source for Environmental Public Health Data

Legend (Measure 1)

Electricity-Dependent Devices and DME



Locate Address

Enter a County, Zip Code, or Address

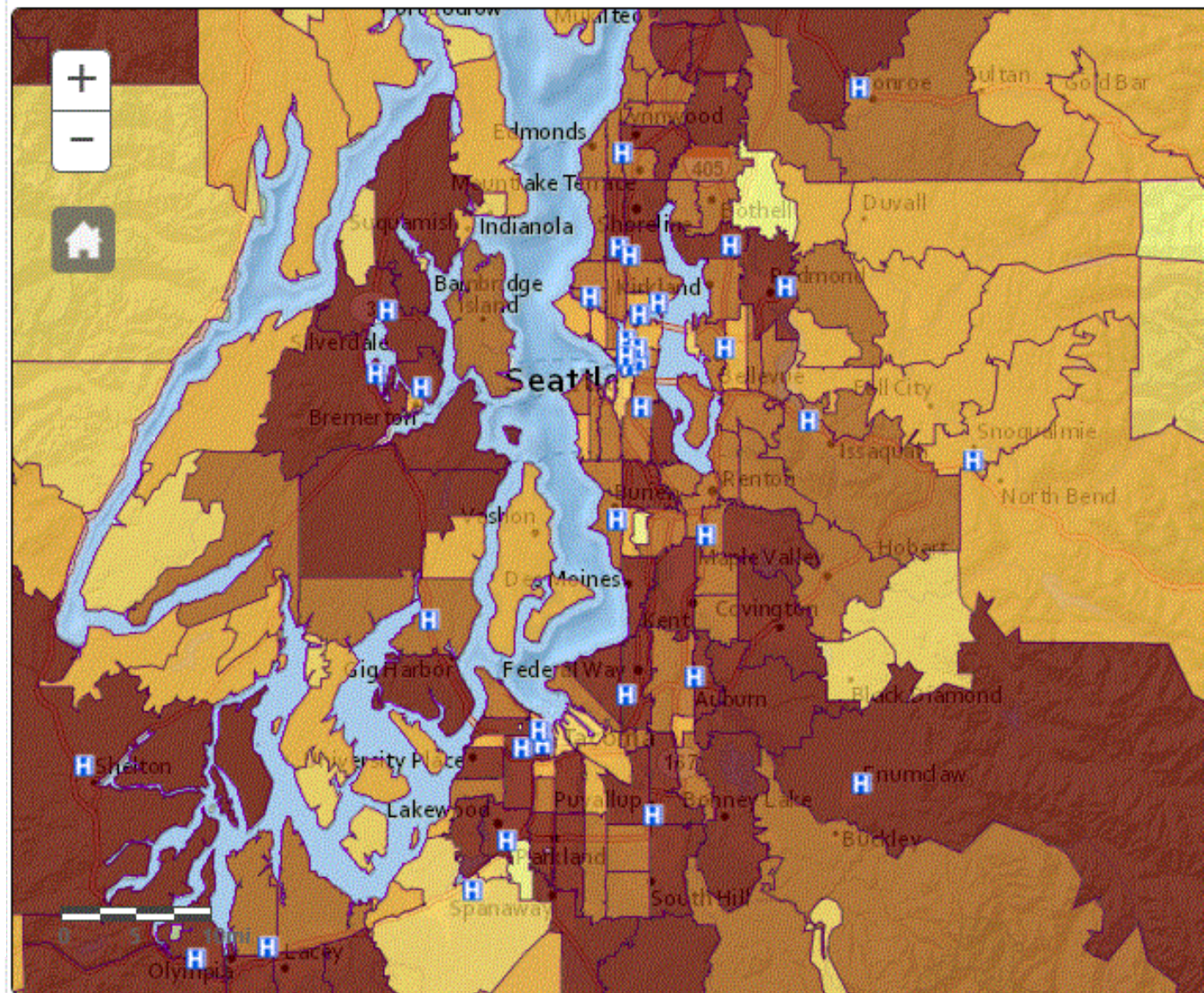
Select Layers to Display

- Hospitals
 - Aging/Elderly Resources
 - All Care Facilities - Census Tract
 - All Care Facilities - County
 - Ambulatory Centers
 - Care Facilities - Adult Family Homes
 - Care Facilities - Assisted Living
 - Care Facilities - Nursing Homes
 - Clinics
 - Cultural and Community Centers
 - Farmworkers Housing
 - K-12 Public Schools
 - Licensed Child Care Centers
 - Mental Health Clinics
 - Real-time Wildfires
 - Rural Health Clinics
 - Statewide Resources
 - Toxic Site Clean-up Status
 - Tribal Clinics
 - Tribal Land Boundary
 - Youth Services
- WAITING
● STARTED
● FINISHED

www.doh.wa.gov/WTN

EPR: In-Home Equipment Dependent on Electricity

Geography: ZIP Code, Year: 2016

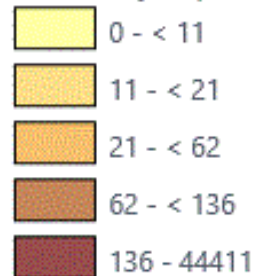


Washington Tracking Network

A Source for Environmental Public Health Data

Legend (Measure 1)

Electricity-Dependent Devices and DME



Locate Address

Enter a County, Zip Code, or Address

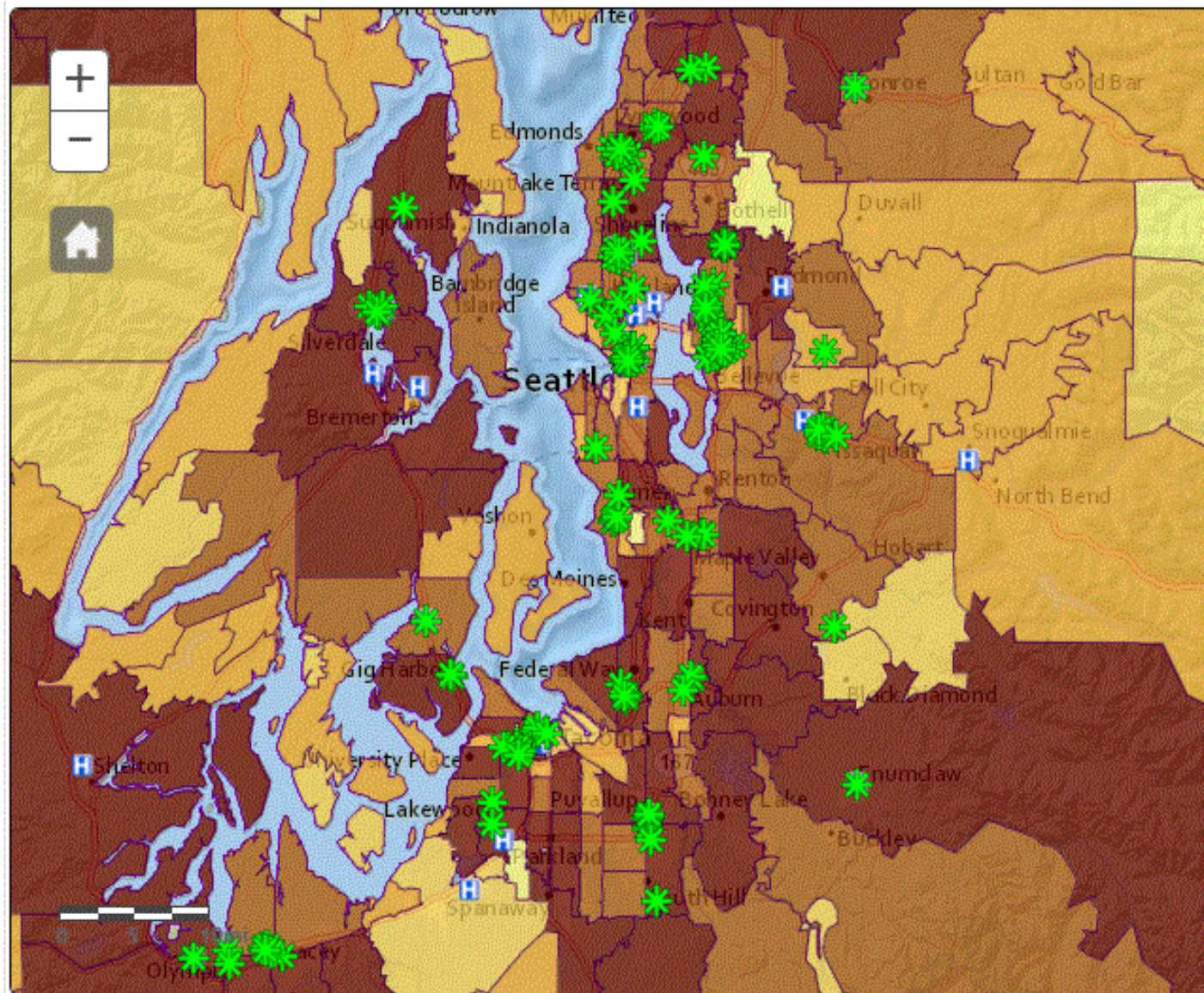
Select Layers to Display

- Hospitals
 - Aging/Elderly Resources
 - All Care Facilities - Census Tract
 - All Care Facilities - County
 - Ambulatory Centers
 - Care Facilities - Adult Family Homes
 - Care Facilities - Assisted Living
 - Care Facilities - Nursing Homes
 - Clinics
 - Cultural and Community Centers
 - Farmworkers Housing
 - K-12 Public Schools
 - Licensed Child Care Centers
 - Mental Health Clinics
 - Real-time Wildfires
 - Rural Health Clinics
 - Statewide Resources
 - Toxic Site Clean-up Status
 - Tribal Clinics
 - Tribal Land Boundary
 - Youth Services
- WAITING
● STARTED
● FINISHED

www.doh.wa.gov/WTN

EPR: In-Home Equipment Dependent on Electricity

Geography: ZIP Code, Year: 2016



Support Drinking Water Systems in Addressing Weather and Climate Sensitive Risks



Photo: Josep Monter

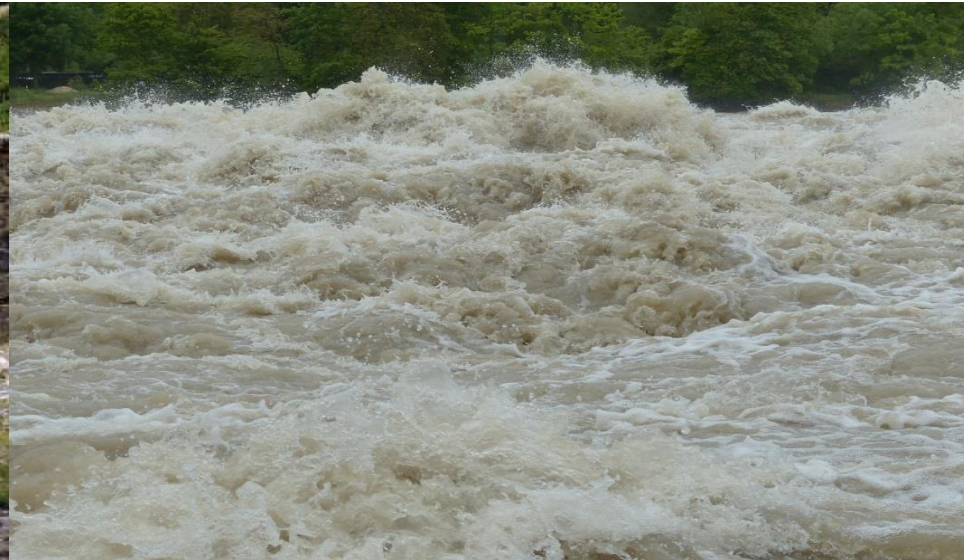


Photo: Christian Fischer



Photo: Ed Kohler



Resources for Drinking Water System Resilience

Efficiency

- Increase metering
- Address system leakage

Infrastructure Investments & Emergencies

- **New Training:** Tools for funding future infrastructure projects (DOH DWSRF)
- Drinking Water State Revolving Fund (DWSRF) low interest loans. Category for resilience projects.
- Rural Community Assistance Corp. Loan Program
- USDA Rural Development: Emergency Community Water Assistance Grants

Regional Networks & Forums

- Cascadewater.org
- WaterPAK – Water Purveyors of Kitsap



Photo: Bidgee

Protect Health During Wildfire Smoke Events

Washington Smoke Information

Posted by Ranil Dhammapala- WA Ecology at 8/05/2017 09:31:00 AM

Tacoma-L St



Walla Walla-12th St



Colville-E 1st St



Spokane-Augusta Ave (SO)



28 Jul 30 Jul 1 Aug 3 Aug 5 Aug

Yakima-4th Ave



Wenatchee-Fifth St



Winthrop-Chewuch Rd



Aberdeen-Division St



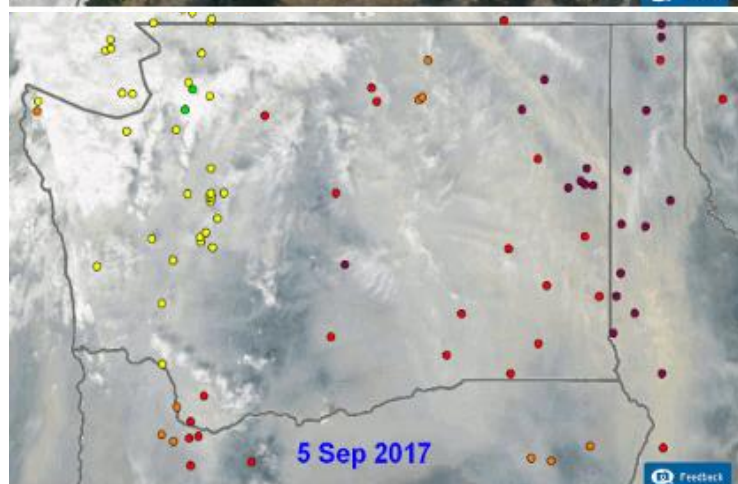
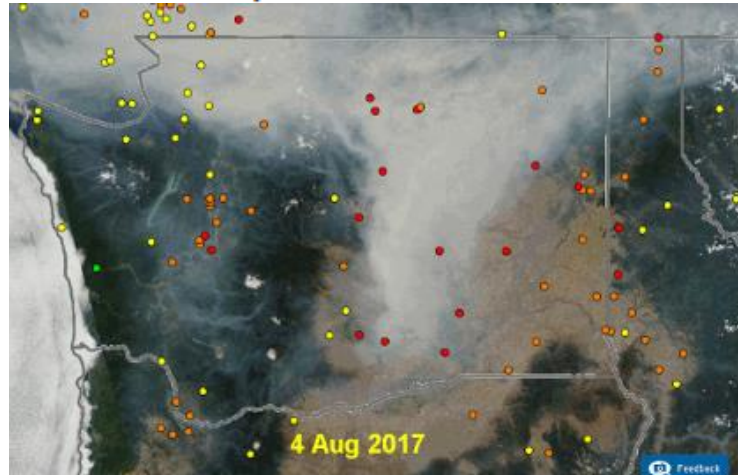
Vancouver-NE 84th Ave



<http://wasmoke.blogspot.com/>

WEDNESDAY, SEPTEMBER 6, 2017

Forecast: smoky with a chance of ashfalls



Smoke From Wildfires - Toolkit

Inhaling wildfire smoke is not good for anyone, even healthy people. specific information for people who are especially sensitive to smoke.

Information For:

Everyone (Including people who are especially sensitive)

- Smoke blog - [English](#) / [Spanish](#)
- Smoke from fires website - [English](#) / [Spanish](#)
- WAQA recommendations - [English](#) / [Spanish](#)
- Face mask fact sheet - [English](#) / [Spanish](#)
- [Fact sheet - everyone \(PDF\)](#)

Information For:

People Who Are Especially Sensitive to Smoke

Babies & Children (under 18)

- [During a fire fact sheet \(PDF\)](#)
- [After a fire fact sheet \(PDF\)](#)
- [Fact sheet - babies & children \(PDF\)](#)

Pregnant Women

- [Fact sheet - pregnant women \(PDF\)](#)

People who are 65+

Enhance systems for early detection & swift response to climate-sensitive risks

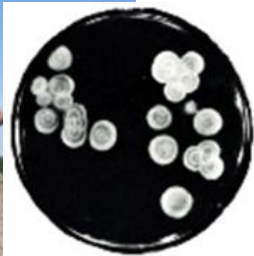


FIGURE 12.—Microscopic appearance of the oyster *C. implexus*, showing fragmented chlamydomonas. This is the infective form of the fungus occurring in oysters.



- Maintain, improve and increase efficiency of surveillance of climate sensitive risks & disease
- Enhance electronic lab reporting & response
- Develop early warning systems

