



# HUD CDBG National Disaster Resilience Grant

Resilient America Roundtable  
June 19, 2018



# GRANT OVERVIEW



**Funded By:** US Dept. of Housing and Urban Development (HUD) and  
the Rockefeller Foundation

**Total Funding Available:** \$1 billion

**Funding Type:** Community Development Block Grant (CDBG)

**Applicant:** State of Iowa w/Partners including the City of Dubuque

HUD CDBG – National Disaster Resilience Grant

# IOWA WATERSHED APPROACH



## GOALS

- 1) Reduce flood risk
- 2) Improve water quality
- 3) Increase resilience
- 4) Engage stakeholders through collaboration and outreach/education
- 5) Improve quality of life and health, especially for vulnerable populations
- 6) Develop a program that is scalable and replicable throughout the Midwest and the United States

<http://iowawatershedapproach.iowa.gov/>



# NDRG GRANT OVERVIEW

## Award Recipients



California - \$70,359,459

Connecticut - \$54,277,359

Iowa - \$96,887,177

Louisiana - \$92,629,249

New Jersey - \$15,000,000

New York - \$35,800,000

Virginia – 120,549,000

New York City - \$176,000,000

New Orleans - \$141,260,569

Minot, ND - \$74,340,770

Shelby County, TN - \$60,445,163

Springfield, MA - \$17, 056,880

Tennessee - \$44,502,374

# GRANT OVERVIEW

## Dubuque Funding

- Funded activities included:
  - ✓ **\$23.1 million** for City of Dubuque infrastructure improvements
  - ✓ **\$8.4 million** for City of Dubuque housing improvements
- Funding Agreement between the City of Dubuque and the Iowa Economic Development Authority (IEDA)



# Housing Impact



Over 50% of Dubuque's residents live or work in the Bee Branch Watershed

85% of properties are historic

57% over 100 years old

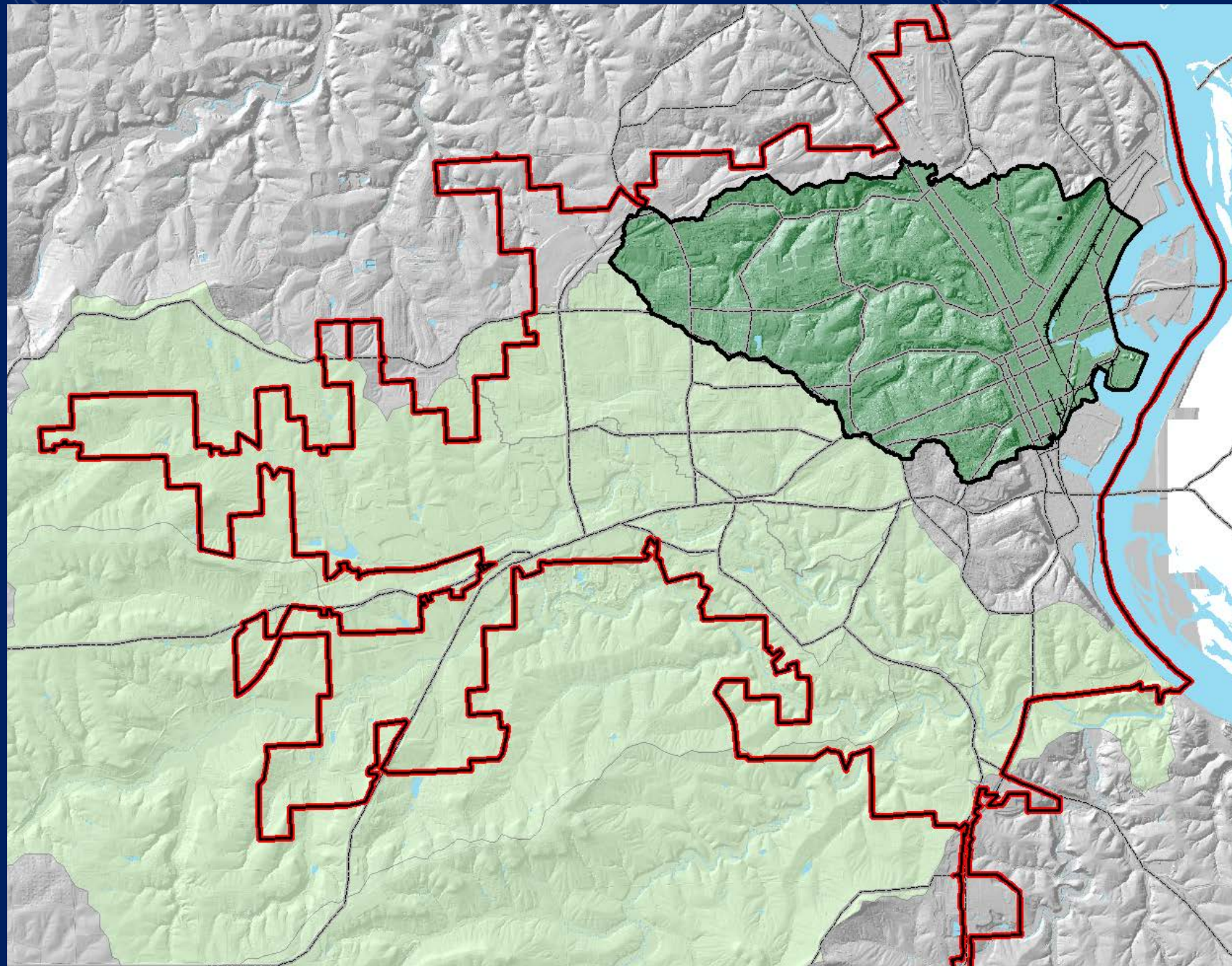




 **City Limits**

 **Bee Branch  
Watershed**

 **Catfish Creek  
Watershed**



# INFRASTRUCTURE IMPROVEMENTS

- Bee Branch Railroad Culvert Improvements;
- 22nd St./Kaufmann Avenue Storm Sewer Improvements; and
- 17th St./West Locust Storm Sewer Improvements

**HUD CDBG – National Disaster Resilience Grant**





# Railroad Culverts



**Damaged in July of 2011**



**HUD CDBG – National Disaster Resilience Grant**

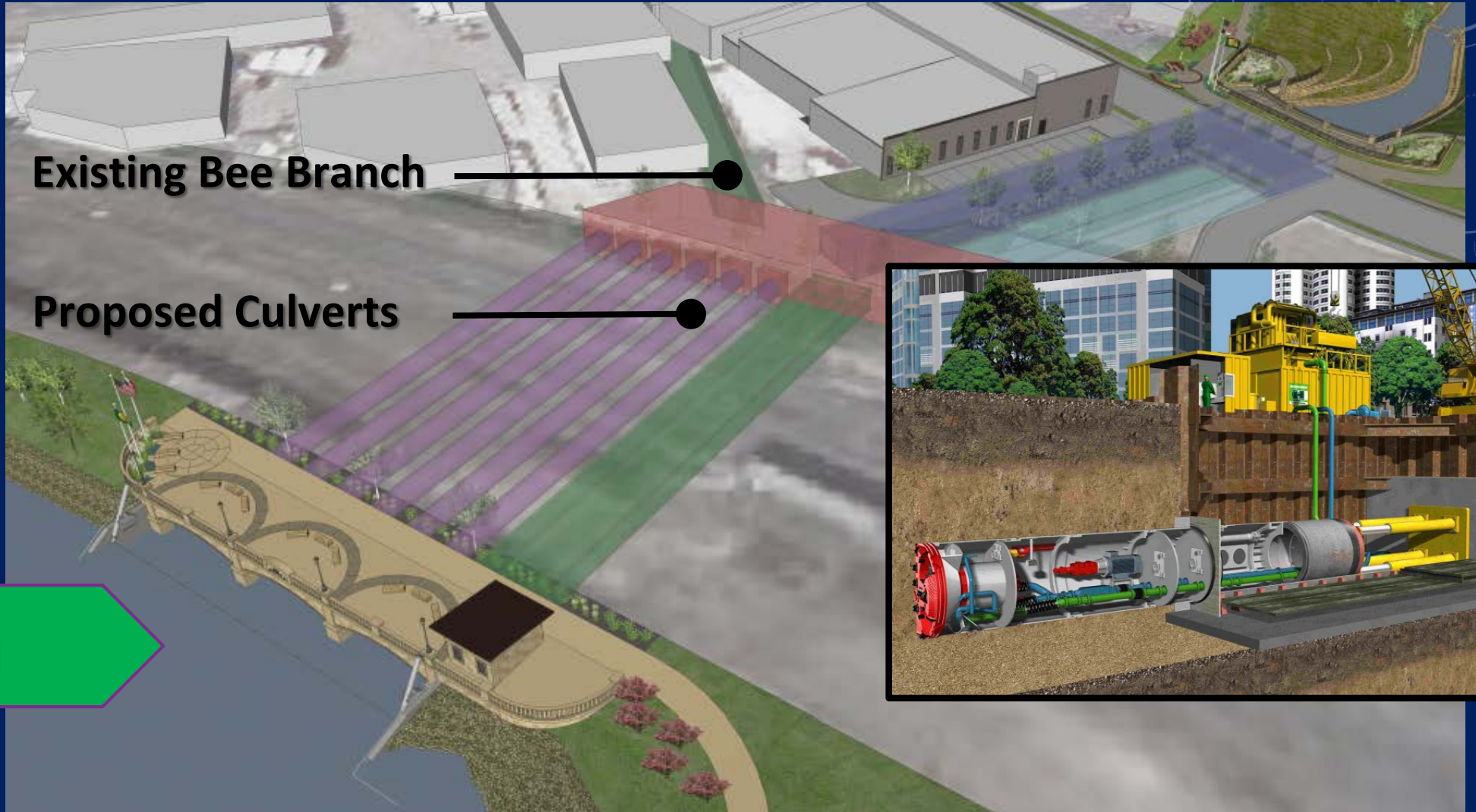




# BEE BRANCH RAILROAD CULVERTS

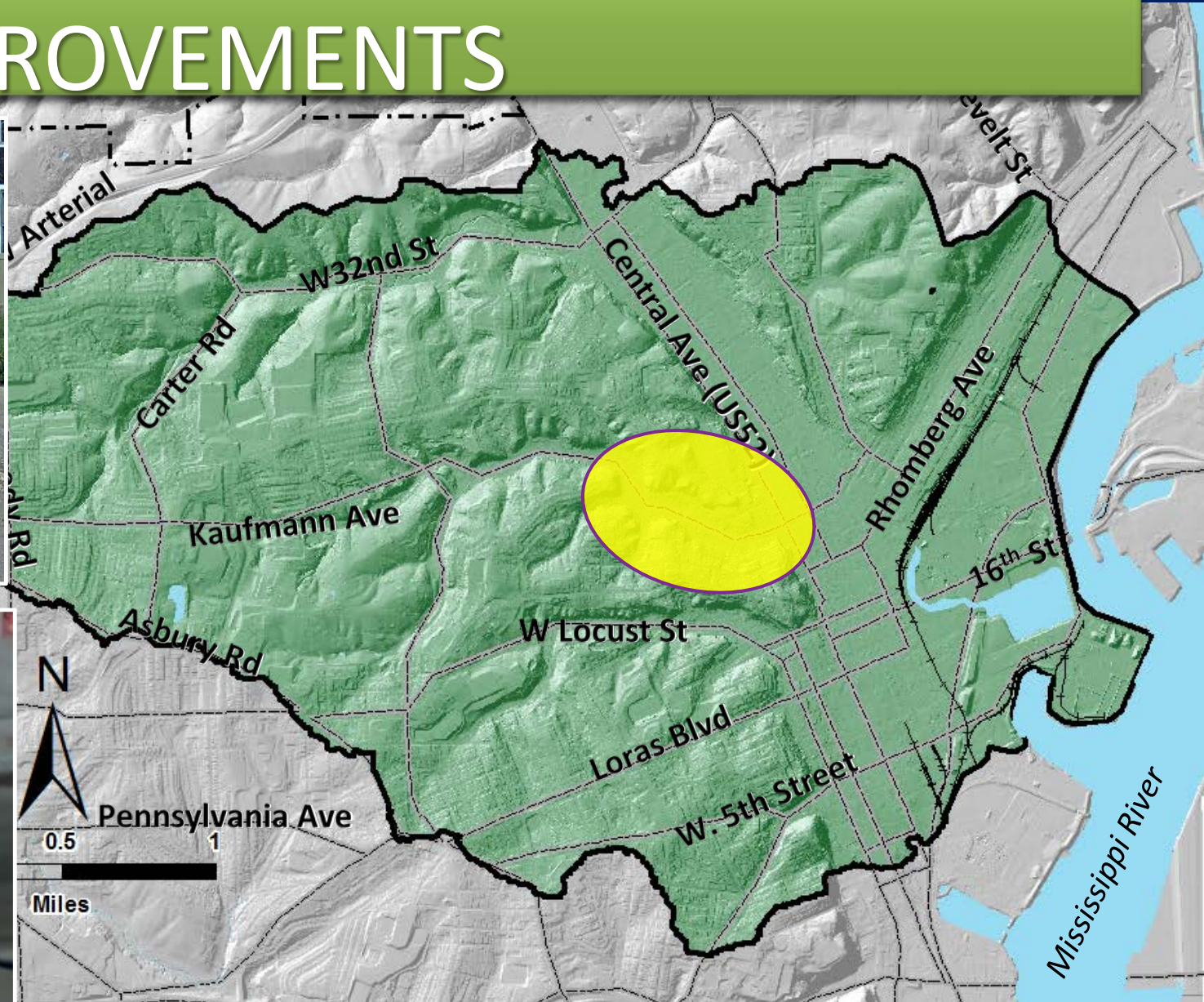


**\$9 million**





# 22<sup>ND</sup> ST./KAUFMANN AVE STORM IMPROVEMENTS



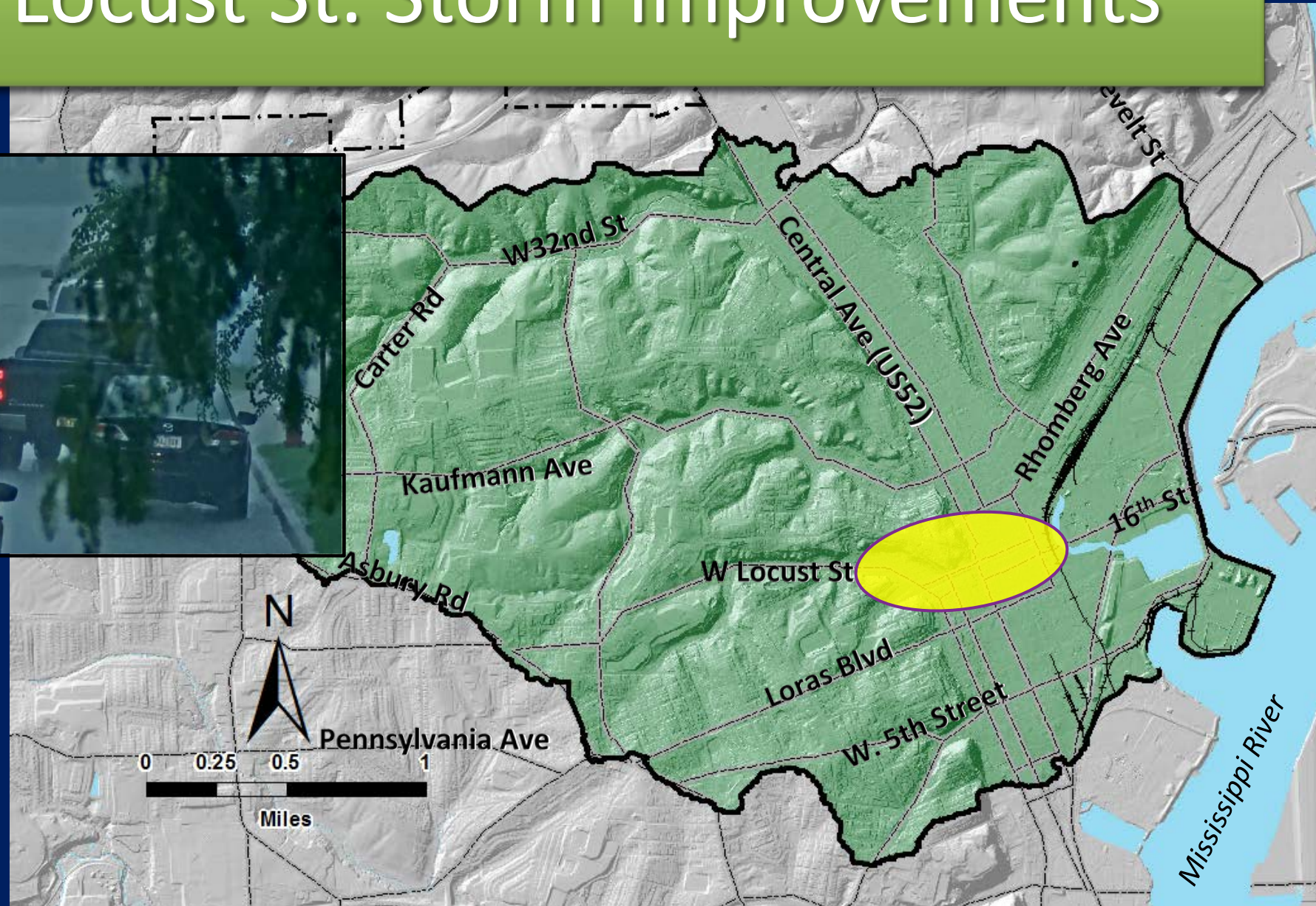


# 22<sup>ND</sup> ST./KAUFMANN AVE STORM IMPROVEMENTS





# 17<sup>th</sup> St./W. Locust St. Storm Improvements





# 17<sup>TH</sup> ST./W. LOCUST ST. STORM IMPROVEMENTS



\$2.6 million





# RESTORED BEE BRANCH CREEK



Upper Bee Branch



Lower Bee Branch

# INFRASTRUCTURE IMPROVEMENTS

## Funding Breakdown, Leverage and Braiding of Funds

### Funding Sources

---

HUD CDBG-NDR Grant

SRF Loan

State Sales Tax Increment

Storm Water Utility

---





# Bee Branch Healthy Homes Resiliency Program

## **\$8.4 Million** to Improve Housing Unit Resilience

In January of 2016 the US Dept. of Housing and Urban Development (HUD) awarded funding to communities that had experienced recent natural disasters.

This is a 5 year program to address health and safety issues related to water intrusion in the home. It also includes a advocacy component that assesses the family's ability to overcome adverse situations.

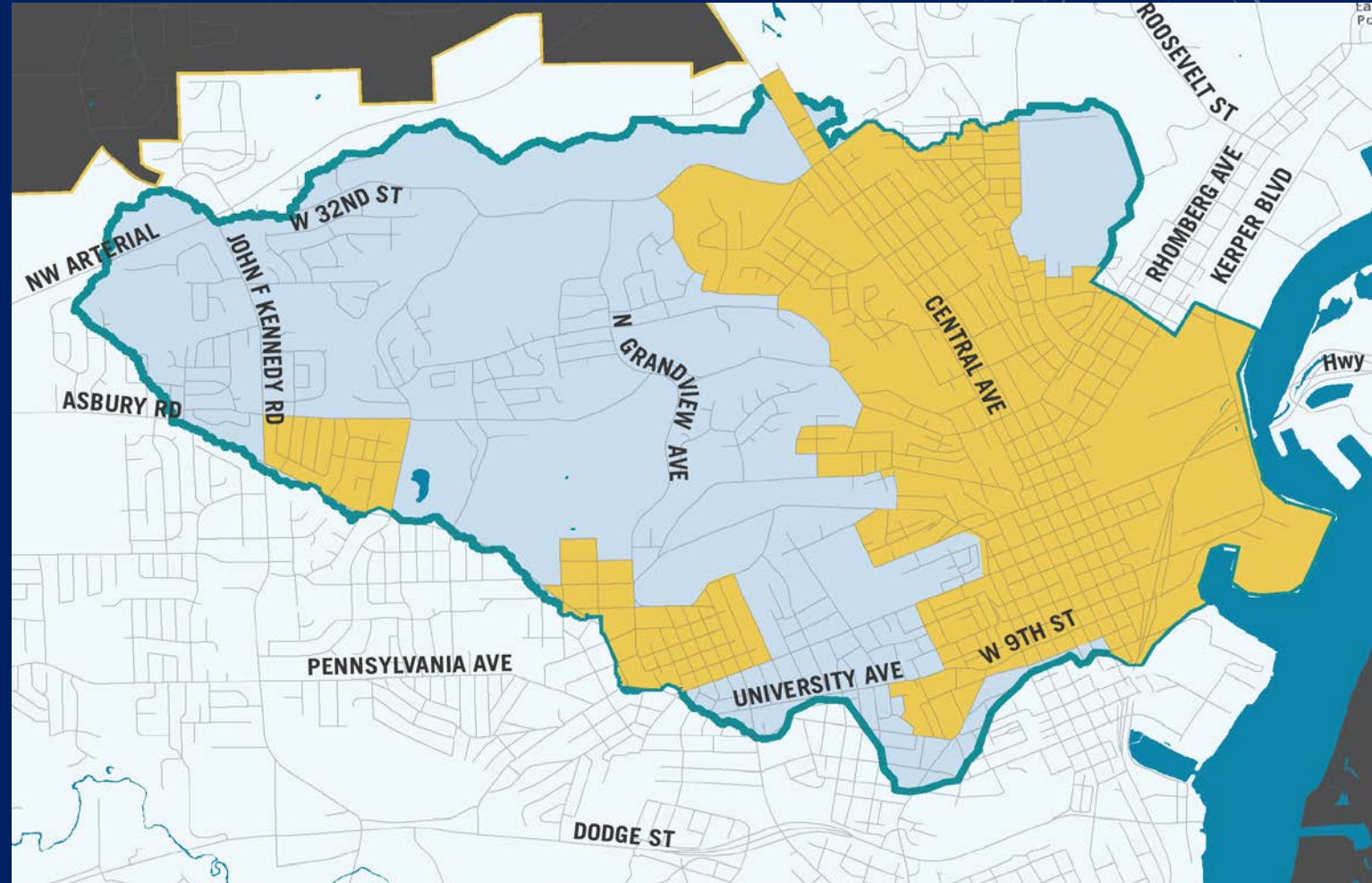




# Bee Branch Healthy Homes Resiliency Program

Who is eligible to participate?

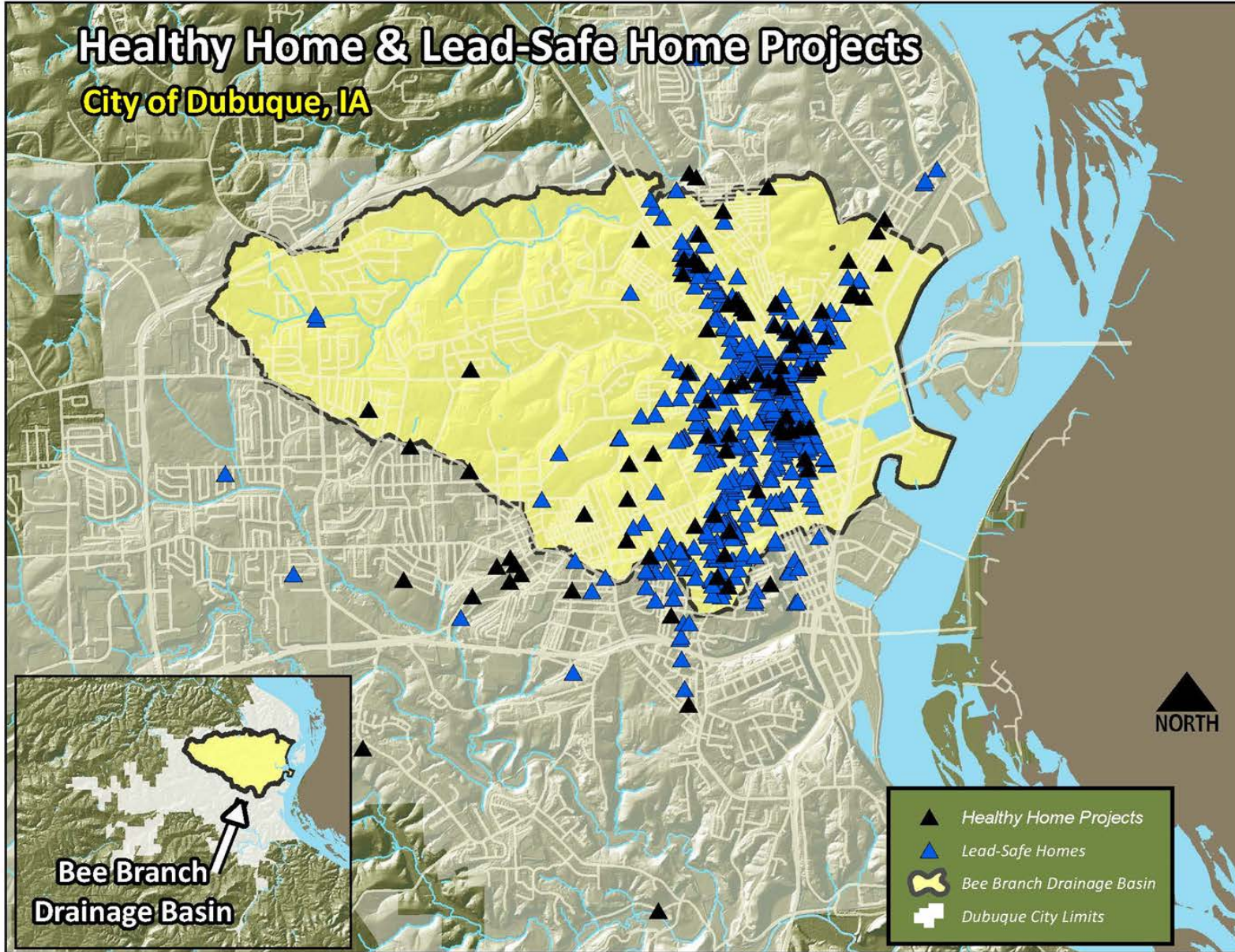
1. Property is located in eligible area.
2. Household income is under 80% Area Median Income.





# Healthy Home & Lead-Safe Home Projects

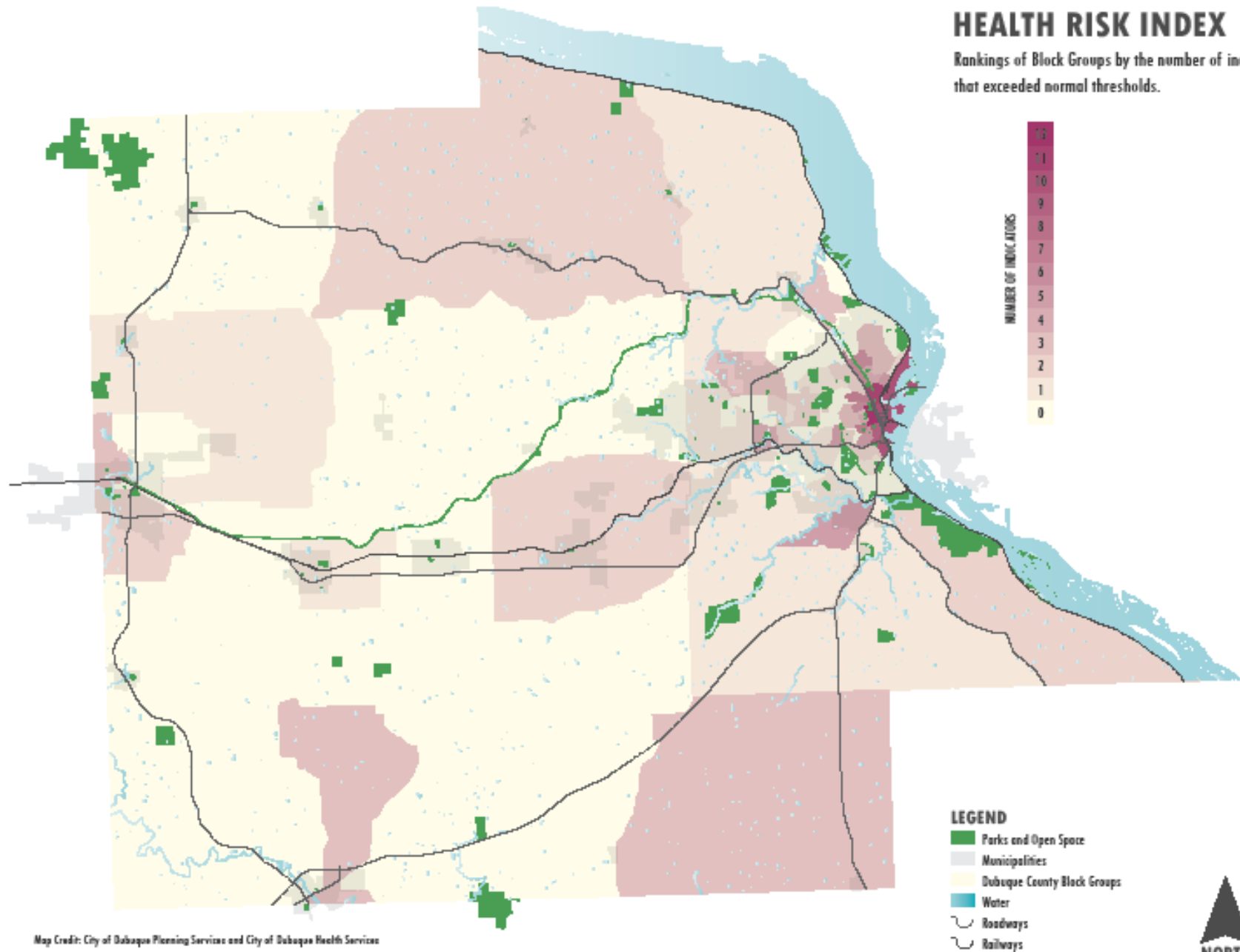
City of Dubuque, IA





## HEALTH RISK INDEX

Rankings of Block Groups by the number of indicators that exceeded normal thresholds.



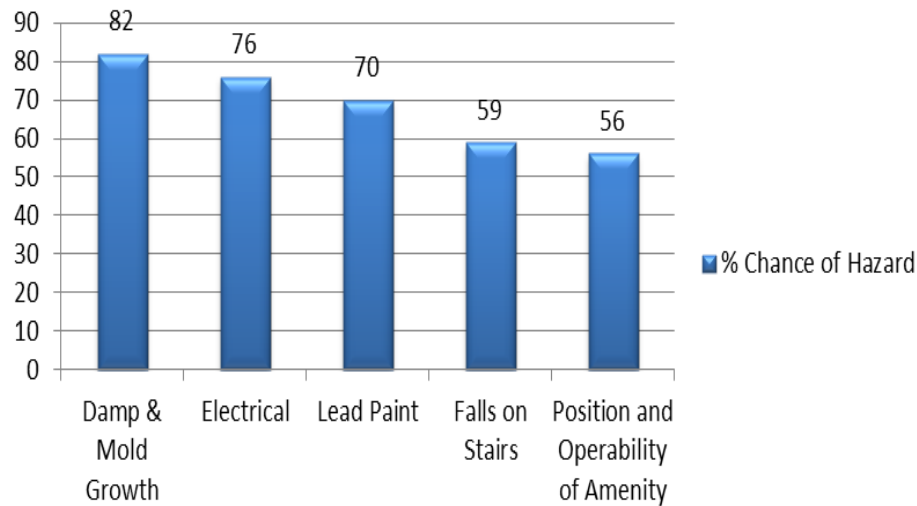
Map Credit: City of Dubuque Planning Services and City of Dubuque Health Services



# Bee Branch Healthy Homes Resiliency Program



**5 Most Common Hazards Found in Dubuque Homes**



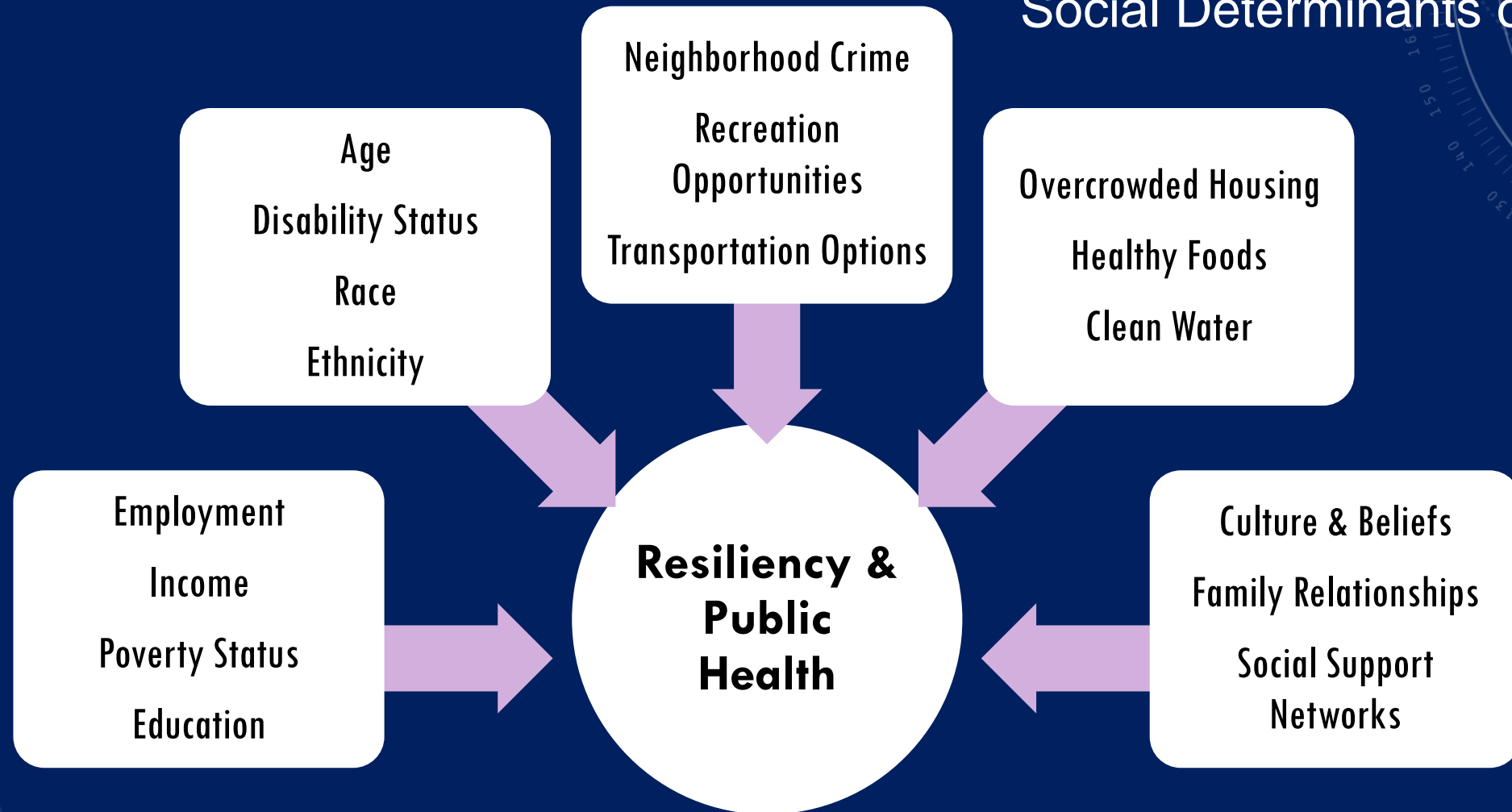
**ZIP CODE 52001**  
Life Expectancy  
**79**

**ZIP CODE 94301**  
Life Expectancy  
**86**

Your ZIP Code shouldn't predict how long you'll live.

# Bee Branch Healthy Homes Resiliency Program

## Social Determinants of Health





# Bee Branch Healthy Homes Resiliency Program

## Advocacy Model



- Home Visitation by the Advocate to each participant's home
  - On average advocates spent (23.2) hours per single family unit and (18.5) hours per multi-family unit, on completed projects to date
- Identify Resident Needs and Challenges
  - Top (5) Referrals by volume: Weatherization, Carbon Monoxide Detector, Education, Home Maintenance, Dental
- Provide Resources and assistance
  - Aim to remove barriers to achieve goals, follow up with providers, meet with partners, personal resilience plan

# WHO ARE OUR PARTICIPANTS?

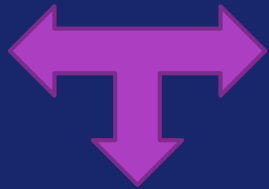


- 16% are disabled
- 60% are women
- 77% are insured through Medicare/Medicaid/TXIX
- 2% are Hispanic
- 6% are Asian/Pacific Islander
- 25%\*\* identify as African American or partially African American



# Bee Branch Healthy Homes Resiliency Program

Intake Challenges



Attrition Tracking



Advocate  
Resource  
Referral



Networking  
Resource  
Connection  
Used



Better:  
Comprehension  
Utilization  
Circumstance

DATA ECOSYSTEM



# Bee Branch Healthy Homes Resiliency Program

## INTAKE CHALLENGE BUCKETS

25.8%

### HEALTH

Health insurance  
Dental insurance  
Dental Home  
Dental Need Gap  
Smoking  
Medical Equipment  
Food  
Pests  
Mental Illness  
Blood lead levels  
Nutrition  
Medical Home

10.8%

### ECONOMIC

Underemployed  
Unemployed  
Financial  
Utility Bill  
Childcare \$\$

6.9%

### EDUCATION

Skills Gap  
NICC Cert  
Parent Education  
Absenteeism  
IEP-Child  
School Supplies  
K-12

19.5%

### SOCIAL

Childcare  
Youth Activity  
Parent Education  
Food  
Legal  
Transportation  
Clothing  
Pests  
Housing  
Counseling  
Social Support (lack of)

36.9%

### BUILT ENVIRONMENT

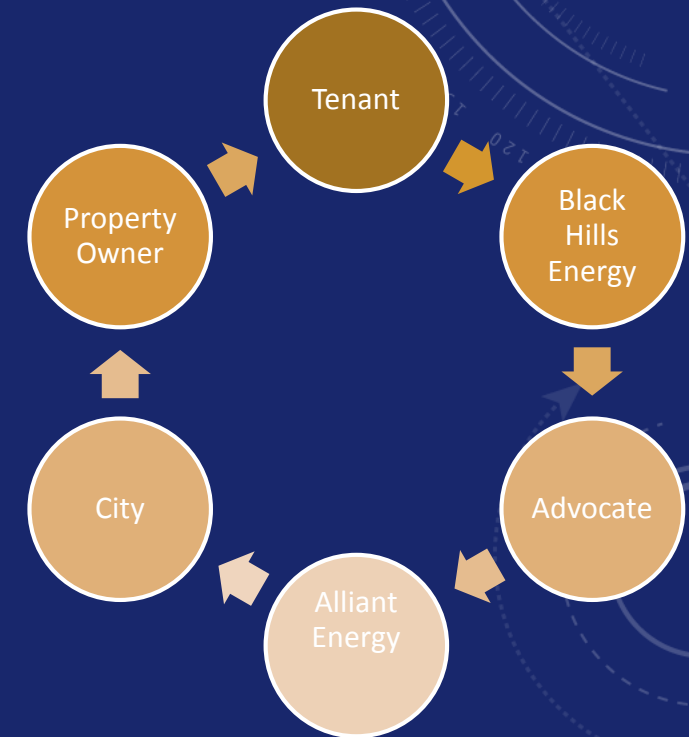
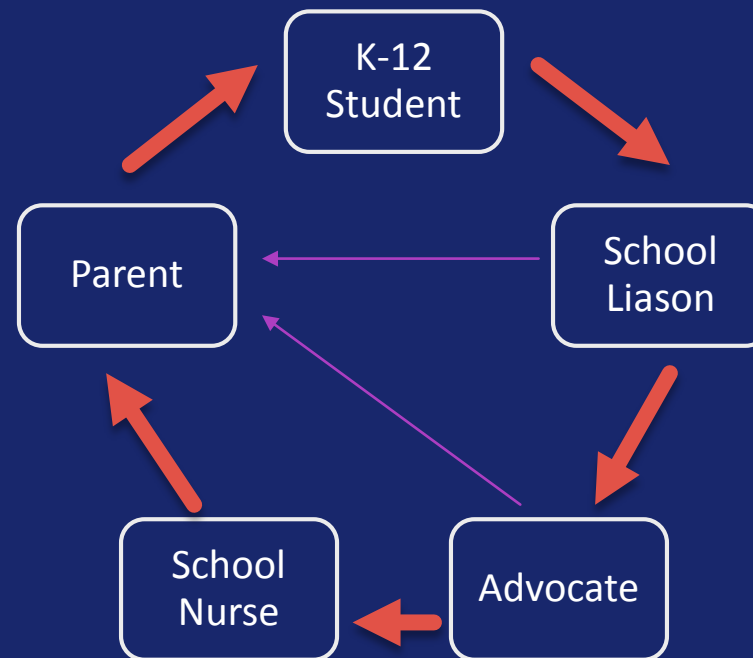
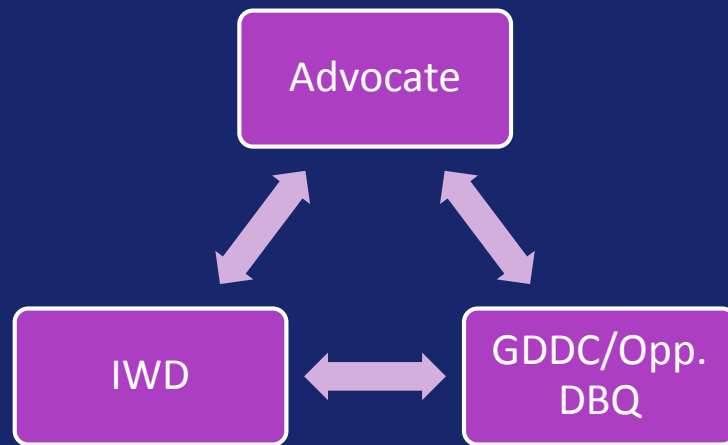
Home Maintenance  
Weatherization  
CO2/Smoke alarm  
Lead Hazards  
Pest Control



# UNIQUE STRATEGIC PARTNERSHIPS FORMED

## NETWORK WEBS FORMED

Measure number of strategic stake holder partnerships formed and unique agency referral partners



# Bee Branch Healthy Homes Resiliency Program



- University of Iowa Center for Evaluation and Assessment
- University of Iowa Flood Center
- Many more organizations attend the quarterly resource group









Before basement was full of items absorbing moisture and dirt was running through foundation.



After new floor, foundation tuck pointing, perimeter drain tile, dimple board, sump with battery back up.





Existing gutter system draining to rear of home.



Sock covered drainage tile terminating in to drywell





# ONSITE STORM WATER RETENTION





## Common repairs completed to reduce water intrusion:

Furnace and Water Heater upgrades (elevation), sump pump with battery back up, soil modifications to improve drainage, gutters and downspouts, foundation repairs



BBHH Story Map of Completed properties and Program Information:

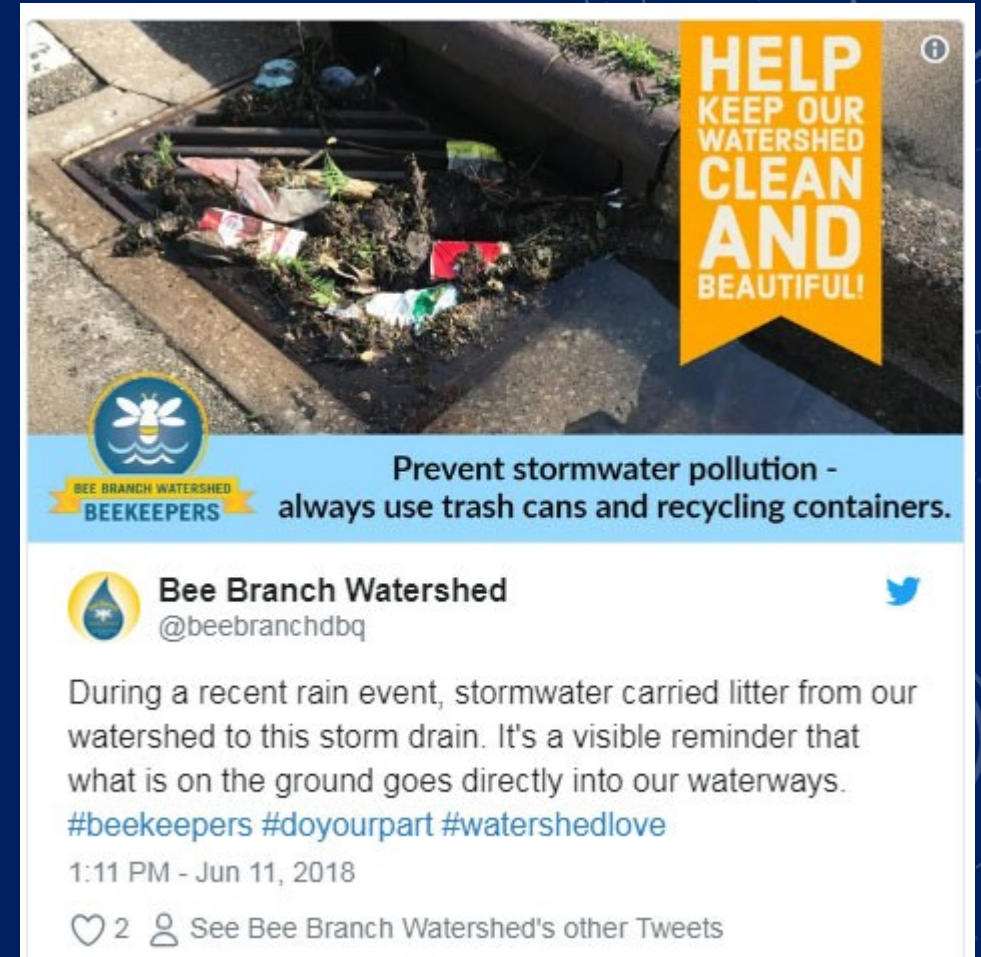
[www.cityofdubuque.org/bbhh](http://www.cityofdubuque.org/bbhh)



# Bee Branch Healthy Homes Resiliency Program

## *Property production thus far:*

- (93) Applications Approved
- (55) Unit contracts awarded
- On average \$17,841 spent per unit





# Bee Branch Healthy Homes Resiliency Program

## Program Outcome Goal: Long Term

### Replicable Model:

This grant is a pilot program that will create a model for other communities to apply the principles and adjust outcomes to better reflect the specific flood and social resilience needs they may have



# HUD CDBG National Disaster Resilience Grant Questions?



Sharon Gaul  
City of Dubuque  
Resiliency Coordinator  
[www.cityofdubuque.org/bbhh](http://www.cityofdubuque.org/bbhh)

[sgaul@cityofdubuque.org](mailto:sgaul@cityofdubuque.org)

