

Data Ethics, Governance, and Partnerships

Angie Raymond

Director, Program on Data Management and Information Governance, Ostrom Workshop



KELLEY SCHOOL OF BUSINESS

INDIANA UNIVERSITY



INDIANA UNIVERSITY BLOOMINGTON
OSTROM WORKSHOP

Ostrom Workshop focuses on the study of governance as it relates to a variety of research areas. The Workshop has established (or is in the process of establishing) three research programs: Cybersecurity and Internet Governance; Natural Resource Governance; and Political, Economic, and Legal Institutions and Organizations.



INDIANA UNIVERSITY BLOOMINGTON
OSTROM WORKSHOP

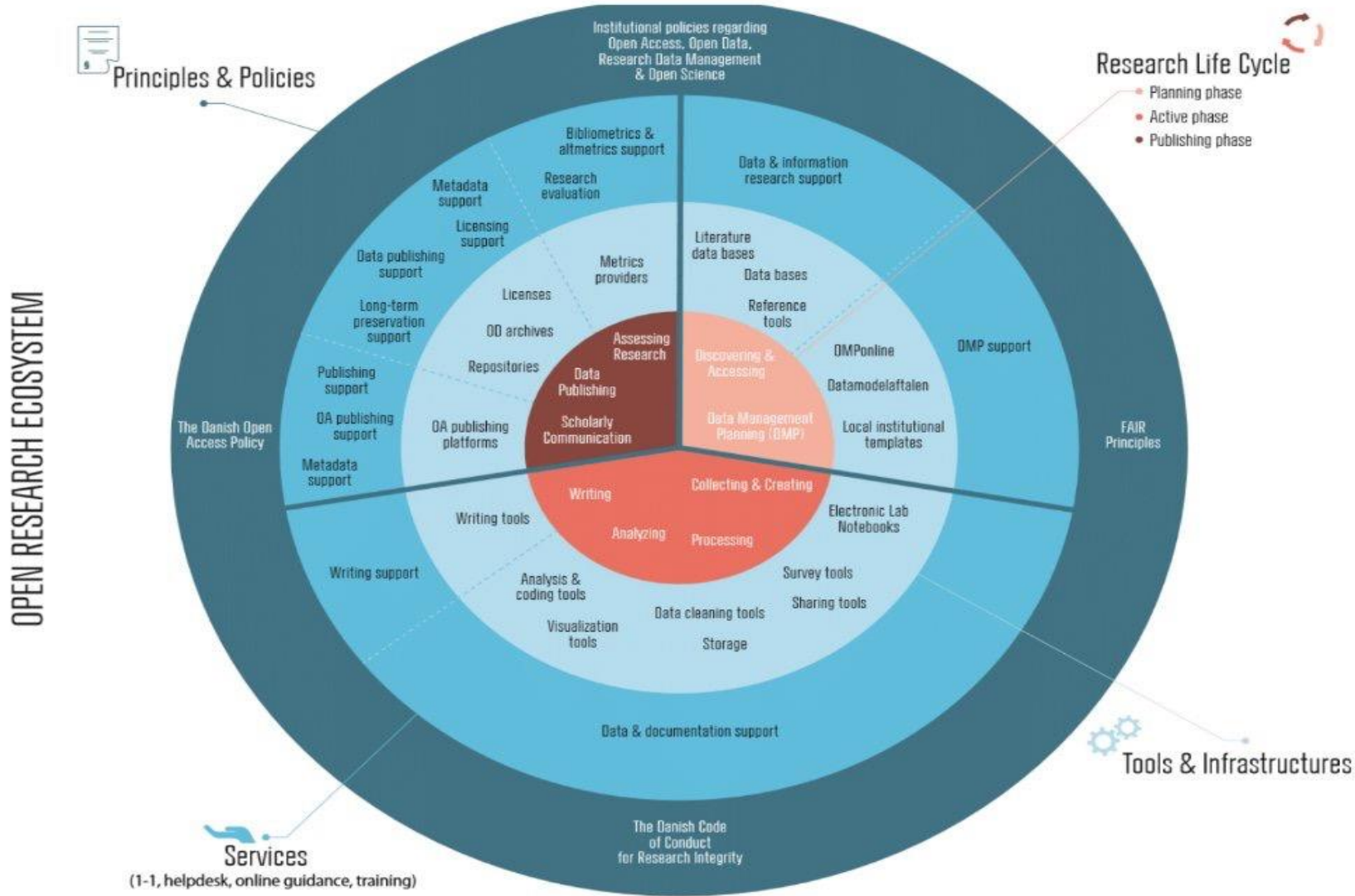
**Program on Data Management
and Information Governance**

The Program aims to:

create a series of multi-disciplinary, multi-sector, multi-stakeholder partnerships that foster discussions around data management and information governance, including the impacts that such uses have upon individuals, businesses, industries, and communities.

I am now certain...

- The solution likely exists within a 'Governance of the Commons' approach- where multi-stakeholder communities begin to examine the issue as a KNOWLEDGE COMMONS.
- At the heart of this is a new way of looking at what is shared or should be shared in the world around us.
- It focuses on collective action and the importance of understanding who shares what, how we share it, and how we sustain commons for future generations



Summary

- Privacy and other legal regimes are siloed (in the US) based on type of data, or the institutions holding/using/storing it
- We need to think more in terms of an ecosystem (hence the Commons approach)
- As new technology and sheer size and velocity of data integrations is allowing non-private, non-sensitive data to be aggregated in ways that lead to impactful uses

Spectrum of Risk Model

1. Entity Identification, Data/Information in Question, and Intended Use
2. Risk and Consequences -
3. Probability - probability of the risk occurring.
4. Impact - what is the impact on the various stakeholders if the risk should occur
5. Priority - based on impact and the probability of occurrence
6. Mitigation Response - a brief overview of mitigation steps to eliminate or reduce the risk.

INDUSTRY KEY RECOMMENDATIONS

1. Incorporate Impact Assessment
2. Insist Upon Privacy by Design
3. Eliminate Emotionally Crafted Narratives and Bad Data Science
4. Create Auditable Machine Learning Algorithms

RECOMMENDATIONS FOR POLICY MAKERS

1. Reject the 'Privacy' Narrative
2. Reject Property as the Guiding Law
3. Reject Solutions Designed in a Paper Based World
4. Embrace Being Uncomfortable
5. Embrace the Spectrum of Risk Analysis
6. Embrace Outcome Based- Impact Assessment

