



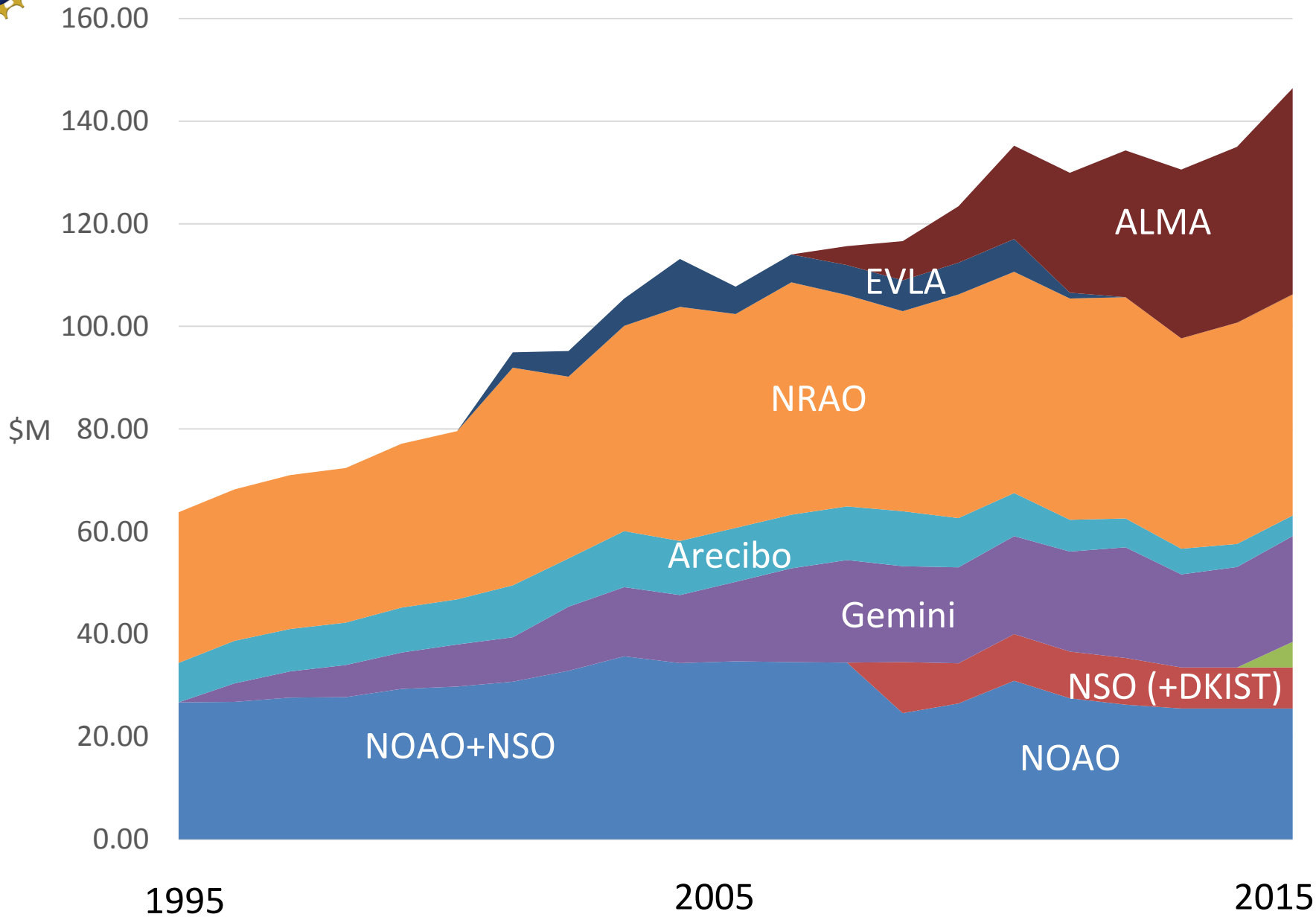
Additional NSF-AST Budget Material

Jim Ulvestad

January 11, 2016



Facility Ops



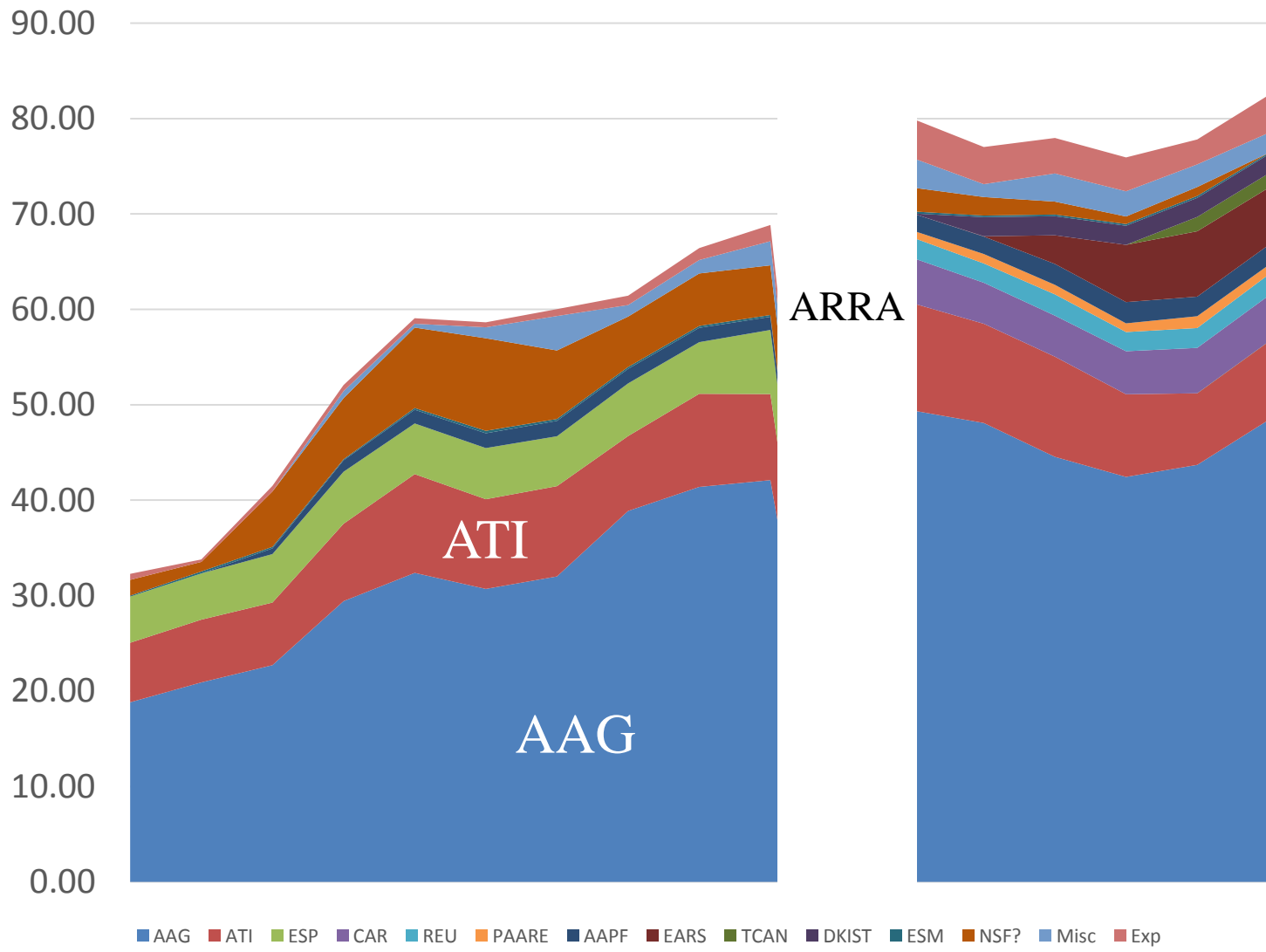


Notes on Facility Operations

- NOAO and NSO were combined within a single organization until ~2008, and are not separable prior to that date
- EVLA construction was included in the NRAO operations budget, but is shown separately to aid in interpretation
- MREFC data are not included
- Most observatories received extra (stimulus) funding for infrastructure renewal in 2009; those funds are not shown here



Small Awards



1999

2005

2010

2015



Notes to Individual Investigator Programs

- Data on individual investigator programs prior to 2010 is broken down in different categories from data post-2009, so many categories are not directly comparable
- For example, the chart has no separable data for programs such as CAREER and REU prior to 2010
- 1999-2008 data taken from NSF input to the decadal survey Demographics Study Group

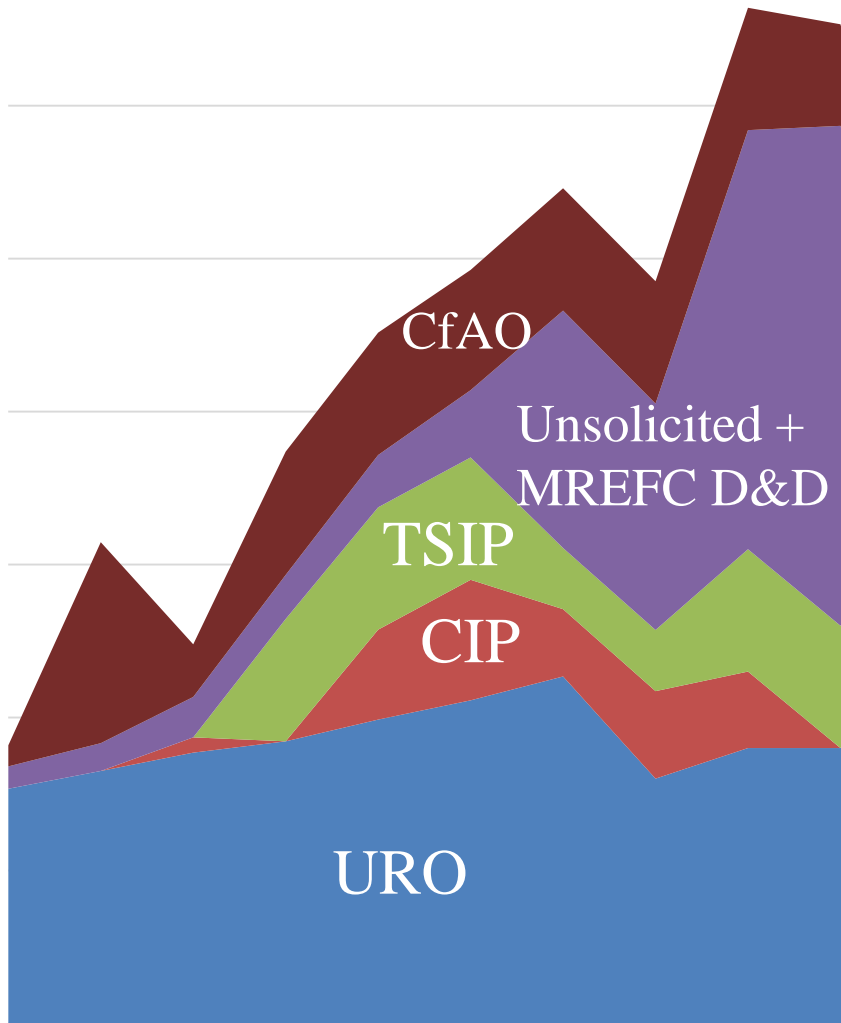


Mid-Scale

35.00
30.00
25.00
20.00
15.00
10.00
5.00
0.00

1999

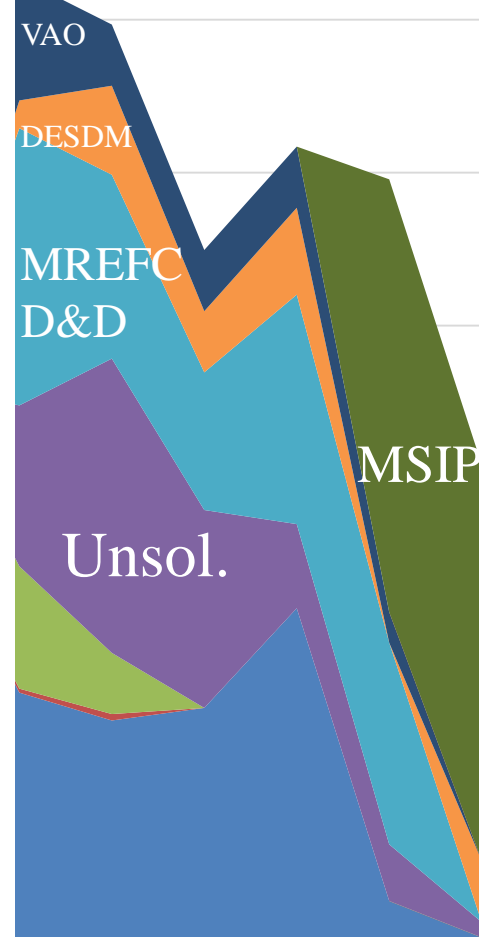
2005



ARRA

2010

2015



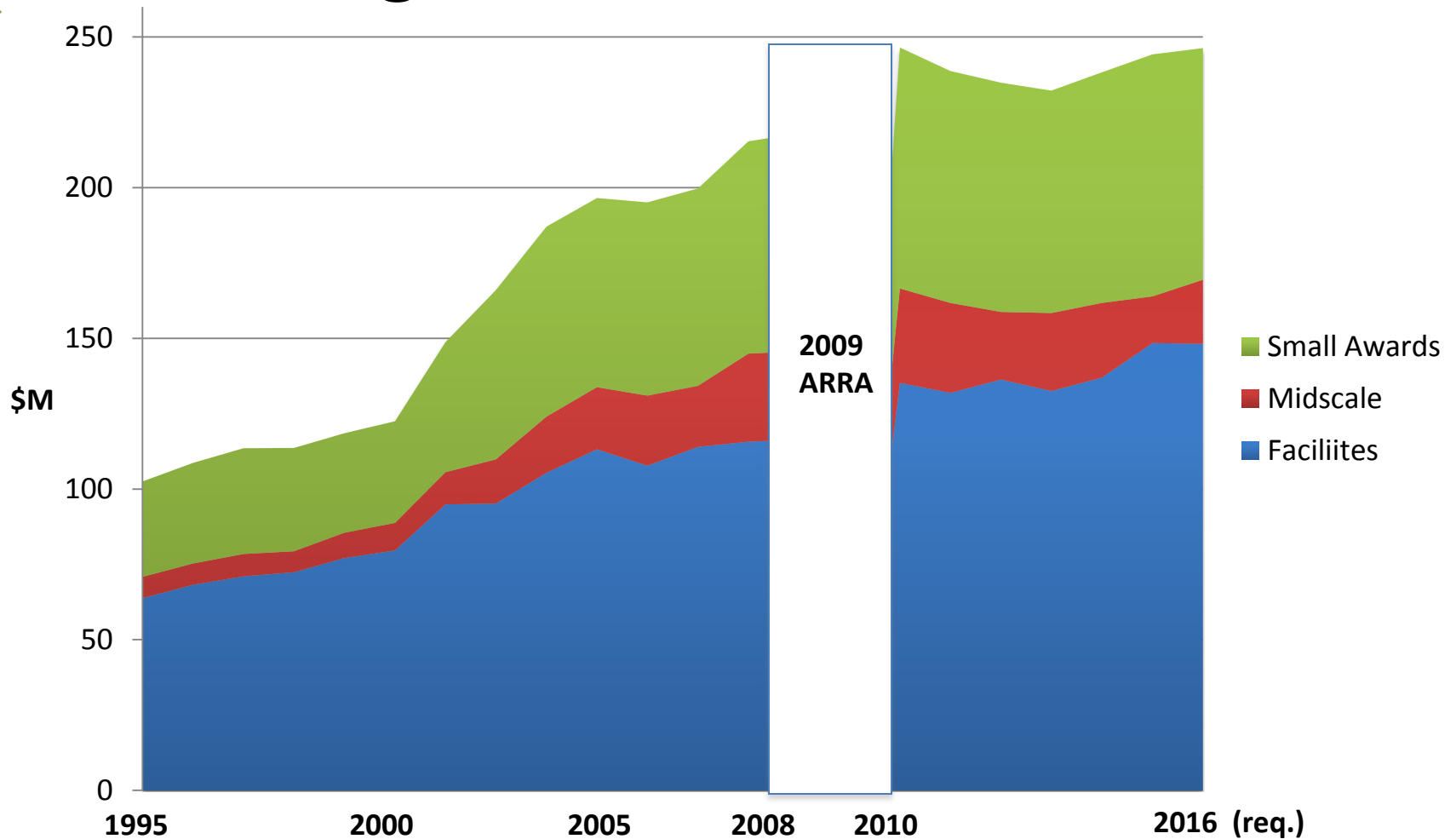


Notes to Mid-Scale

- Mid-scale plot includes all types of proposals currently included within MSIP solicitation.
- Data were categorized differently before 2010. For example, the MREFC Design & Development programs (LSST, GSMT, SKA) and NVO=VAO are not easily separable from Unsolicited programs prior to 2010.
- CIP=Community Instrumentation Programs was primarily the Adaptive Optics Development Program



AST Budget Breakdown, 1995-2016



- Facility fraction was 63%-65% in late 1990s, decreased to 53% in 2008, then rose back to 60% in FY 2016 request