

# HEALTH DISTRICTS

## MAKING OUR INFRASTRUCTURE WORK HARDER FOR US

DR. JANICE BARNES  
GLOBAL RESILIENCE DIRECTOR

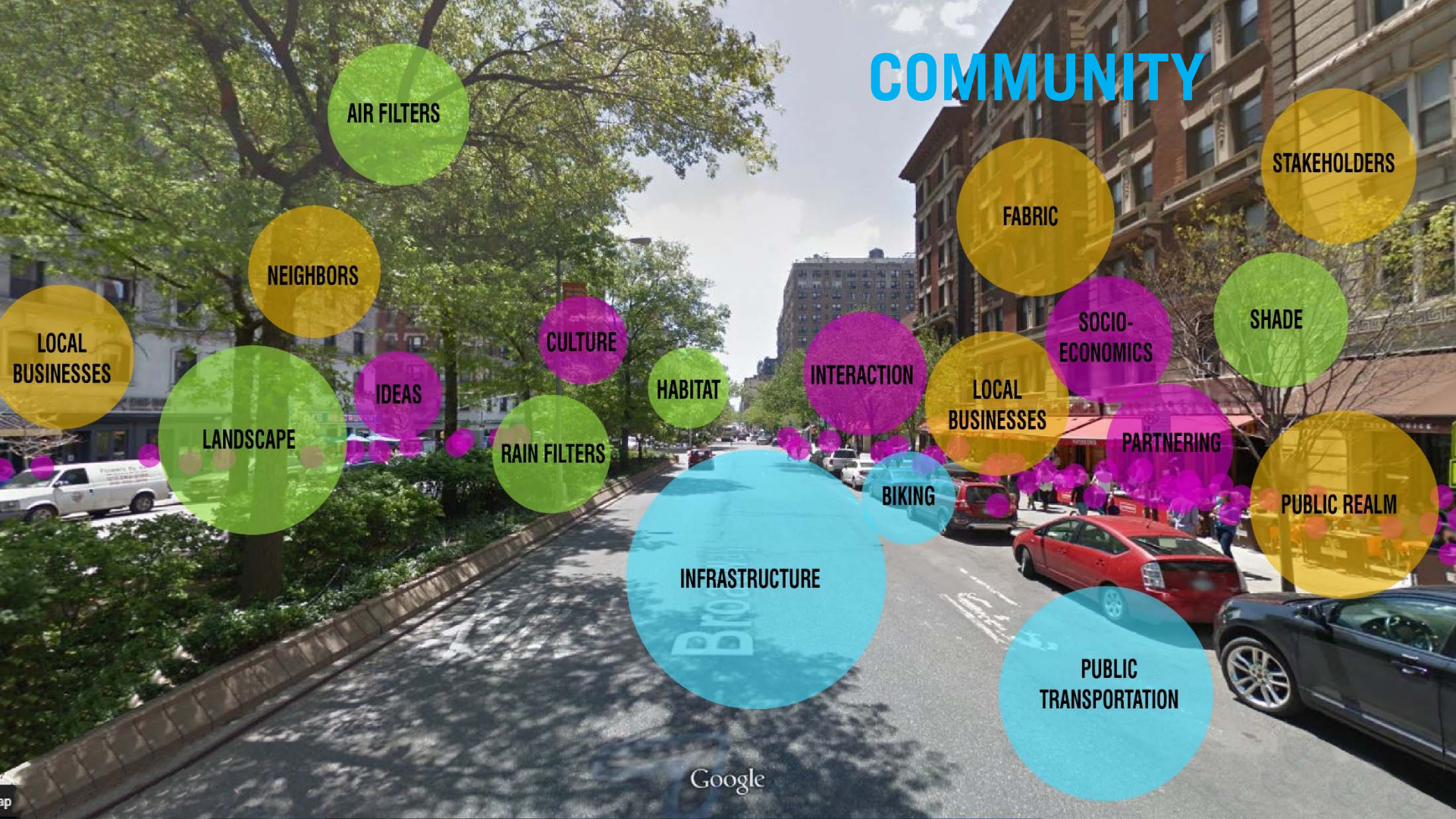
# PERKINS+WILL

This work is the results of collaborations on the Asthma Project led by Breeze Glazer and the Wyckoff Health Improvement District led by Jason Harper, Daniel Windsor, Mike Aziz, Andrew Salvesson and Brad Rogers.

# How we look determines what we see



# COMMUNITY



AIR FILTERS

NEIGHBORS

LOCAL  
BUSINESSES

LANDSCAPE

IDEAS

CULTURE

RAIN FILTERS

HABITAT

INTERACTION

BIKING

INFRASTRUCTURE

FABRIC

SOCIO-  
ECONOMICS

LOCAL  
BUSINESSES

PARTNERING

STAKEHOLDERS

SHADE

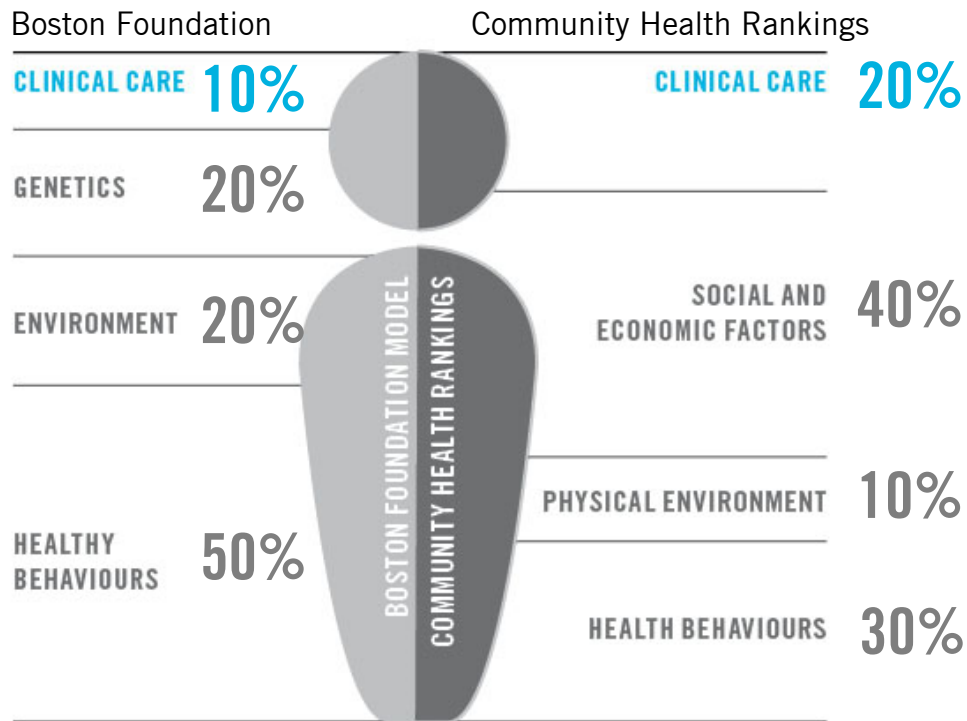
PUBLIC REALM

PUBLIC  
TRANSPORTATION

**What if we saw our communities as contributors to our overall health?**

## WHAT MAKES US HEALTHY

Two different models:



Behavioral factors such as diet and physical activity, and the environmental factors that impact those behaviors account for **as much as 70%** in overall individual health.

## DATA GATHERING TO SEE THE COMMUNITY

### What we found

#### **GEOGRAPHY**

- Existing land use and zoning
- Neighborhood boundaries
- Community Board boundaries and members
- Hospital Functional Layout
- Physical Character

#### **ACCESS**

- Transportation routes  
(subway, bus, truck, rail)
- Entry and interface

#### **COMMUNITY AMENITIES**

- Community Institutions (churches, schools, libraries, community centers)
- Healthcare Assets (community medical centers, pharmacy, mental health clinics,

addiction treatment centers)

- Grocery stores and bodegas
- Art studios and galleries
- Community Organizations

#### **DEMOGRAPHICS / HEALTH DATA**

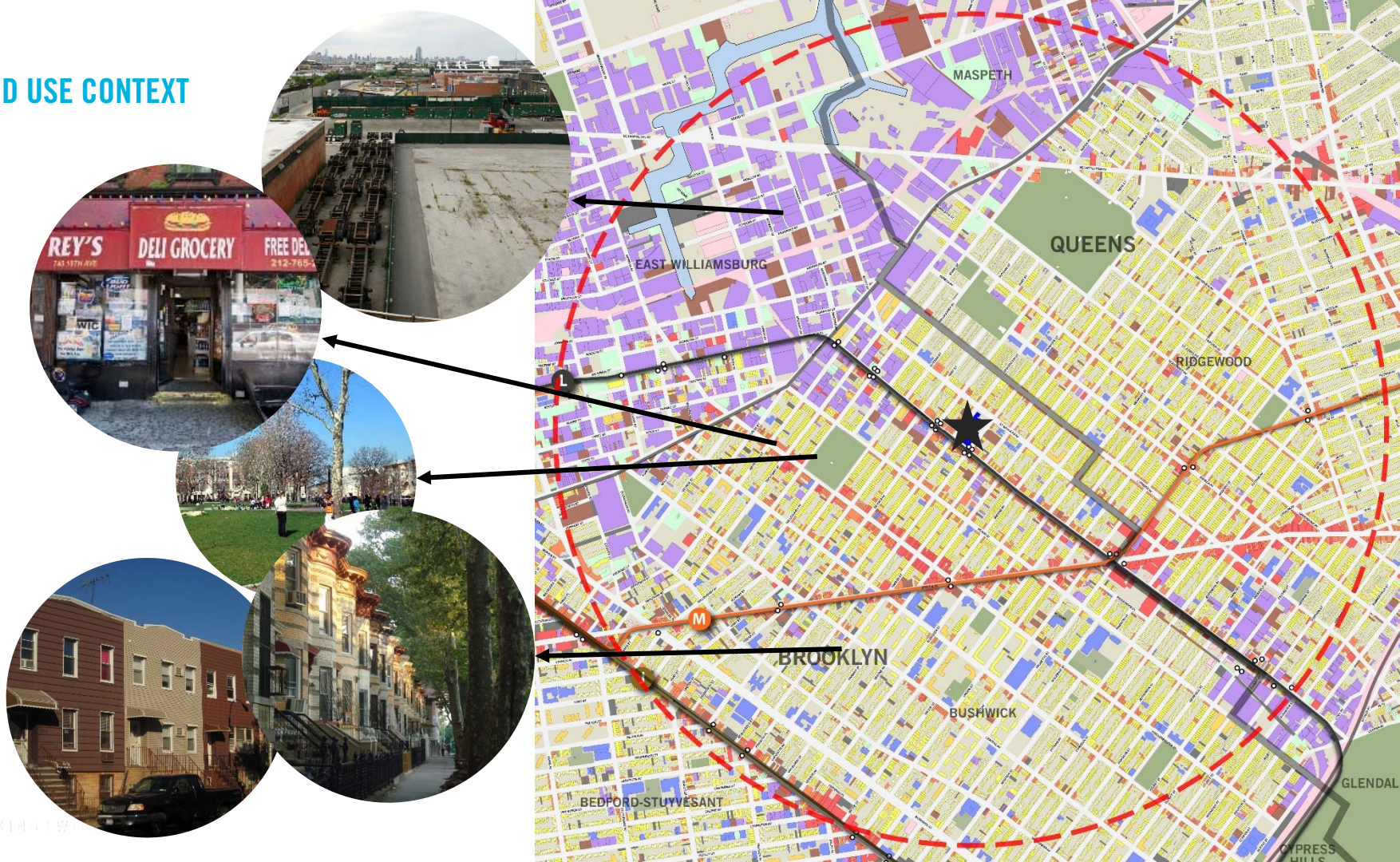
- Demographics (race, age, income)
- Graduation rates (high school, university)
- Crime data
- County-level health indicators and outcomes
- Asthma prevalence rates

#### **CULTURE**

- History of Bushwick & Ridgewood
- Change over time
- Political landscape



## LAND USE CONTEXT





## FOOD ACCESS



**52% of restaurants are fast food restaurants**



# WALKABILITY / TRANSIT ACCESS



**374 Stockholm Street**

**Very Walkable** ?

Bushwick Neighborhood, New York



**Excellent Transit**

374 Stockholm Street has excellent transit which means transit is convenient for most trips. Car sharing is available from RelayRides and Zipcar.

**Walk Score®**

**Nearby Apartments**

**Nearby Homes**

**Save**

[Compare Rates with LendingTree Now!](#)

## Restaurants:

Claribel Restaurant .06mi >

## Coffee:

C M Coffee Shop .03mi >

## Bars:

3M Hardwood Floors .3mi >

## Groceries:

Quisqueya Deli & Grocery .07mi >

## Parks:

Maria Hernandez Park .4mi >

## Schools:

PS 86 Irvington School .2mi >

## Shopping:

Hart Fashion Inc .2mi >

## Entertainment:

The Vander Ende-Onderdonk ... .5mi >

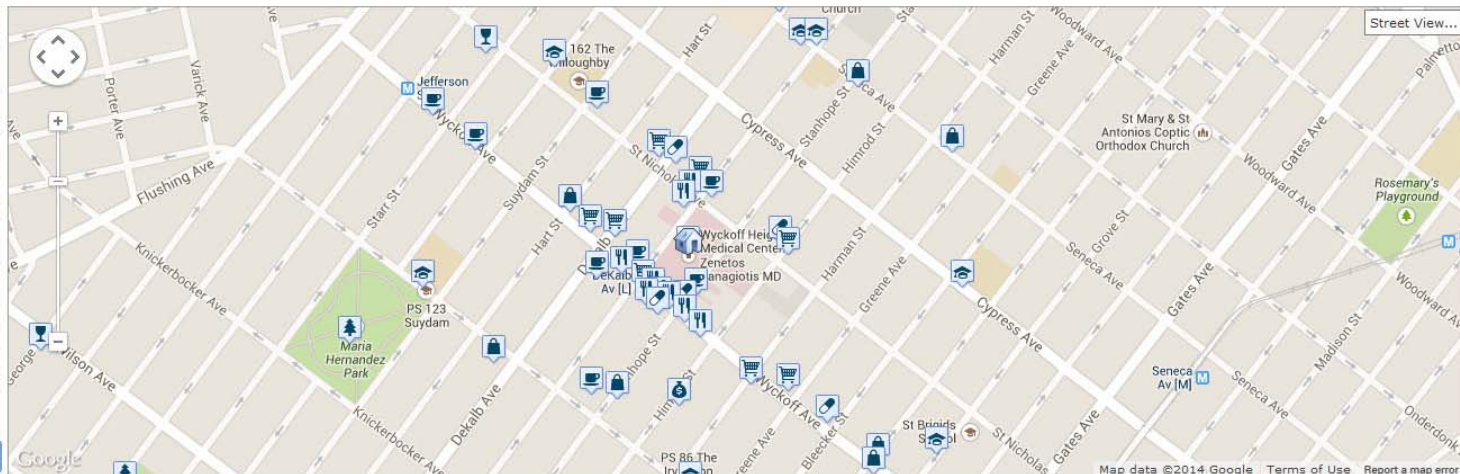
## Errands:

Lobby Pharmacy .03mi >

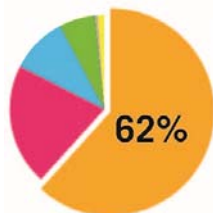
## Search Nearby:

Where do you commute?

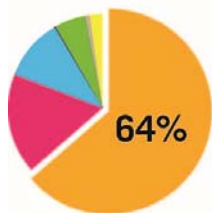
**Go**



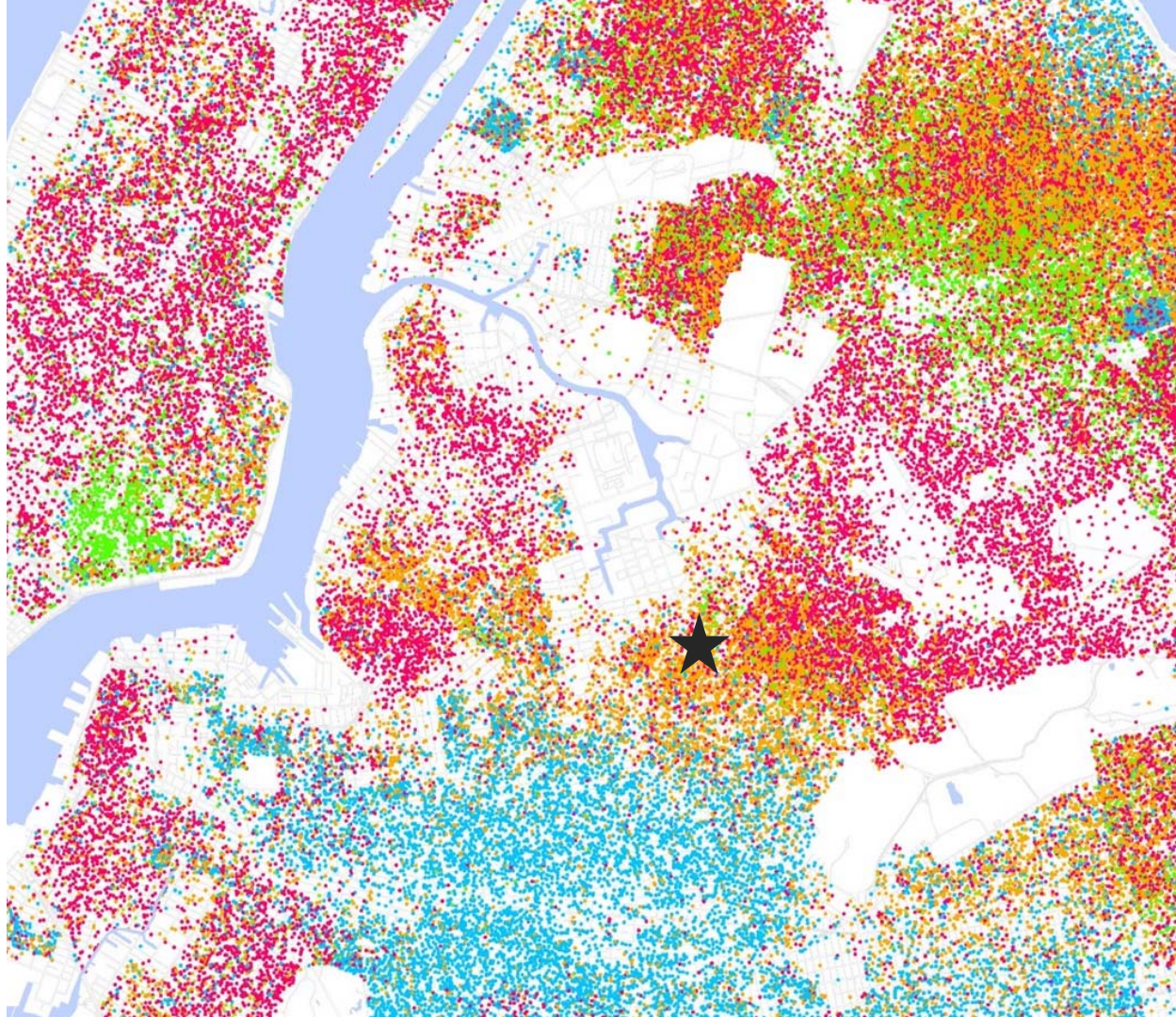
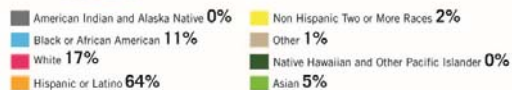
## DEMOGRAPHICS



**2010 Census**  
147,790 Neighbors  
within a 1 mile radius



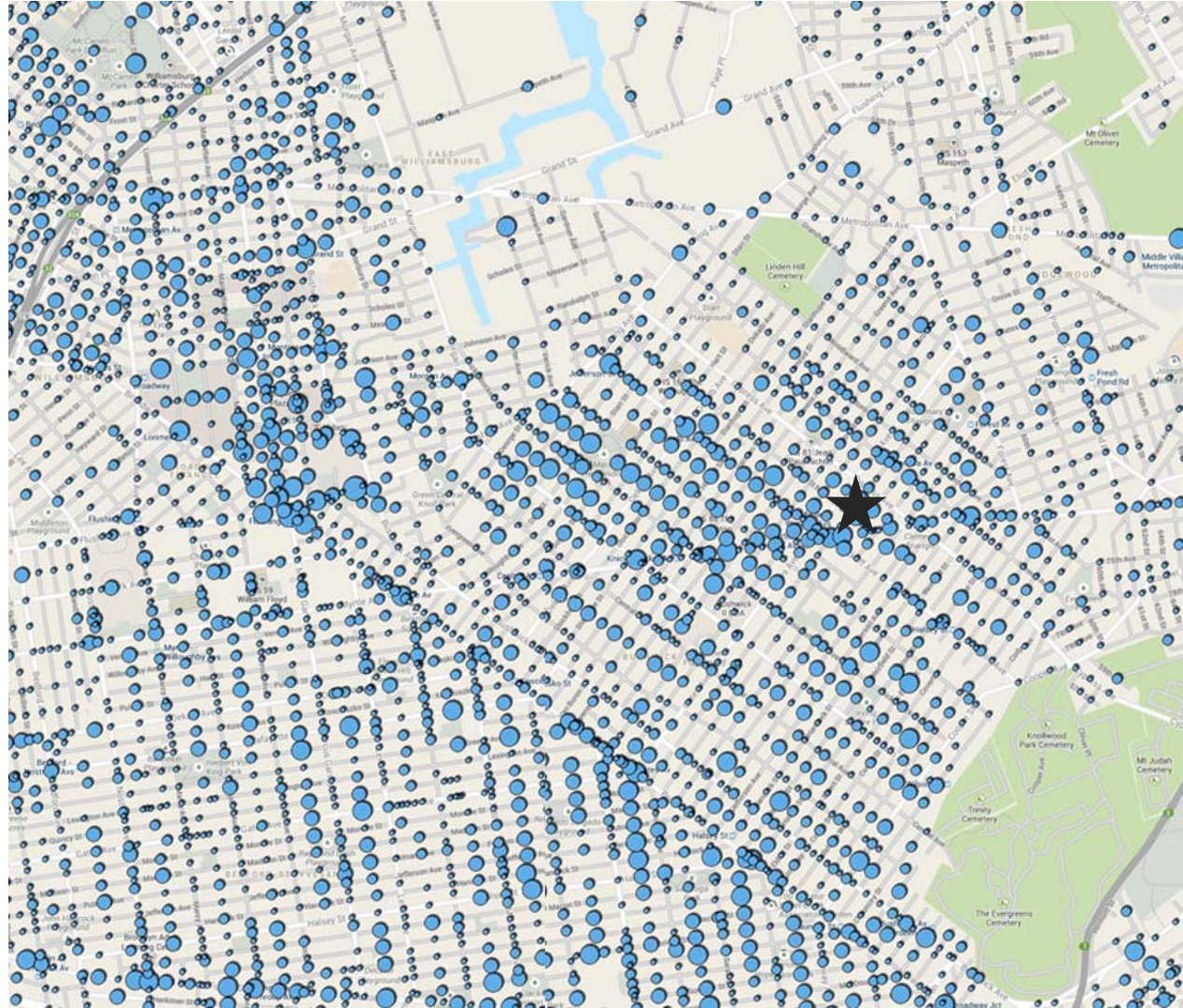
**2000 Census**  
137,873 Neighbors  
within a 1 mile radius





## CRIME DATA

- Burglary
- Felony Assault
- Grand Larceny
- Grand Larceny Motor Vehicles
- Murder
- Rape
- Robbery





# Empowering the decision makers

HOME Wyckoff Health Improvement District (HID)

NEW MAP

PW

Details

Basemap

Share

Print

Measure

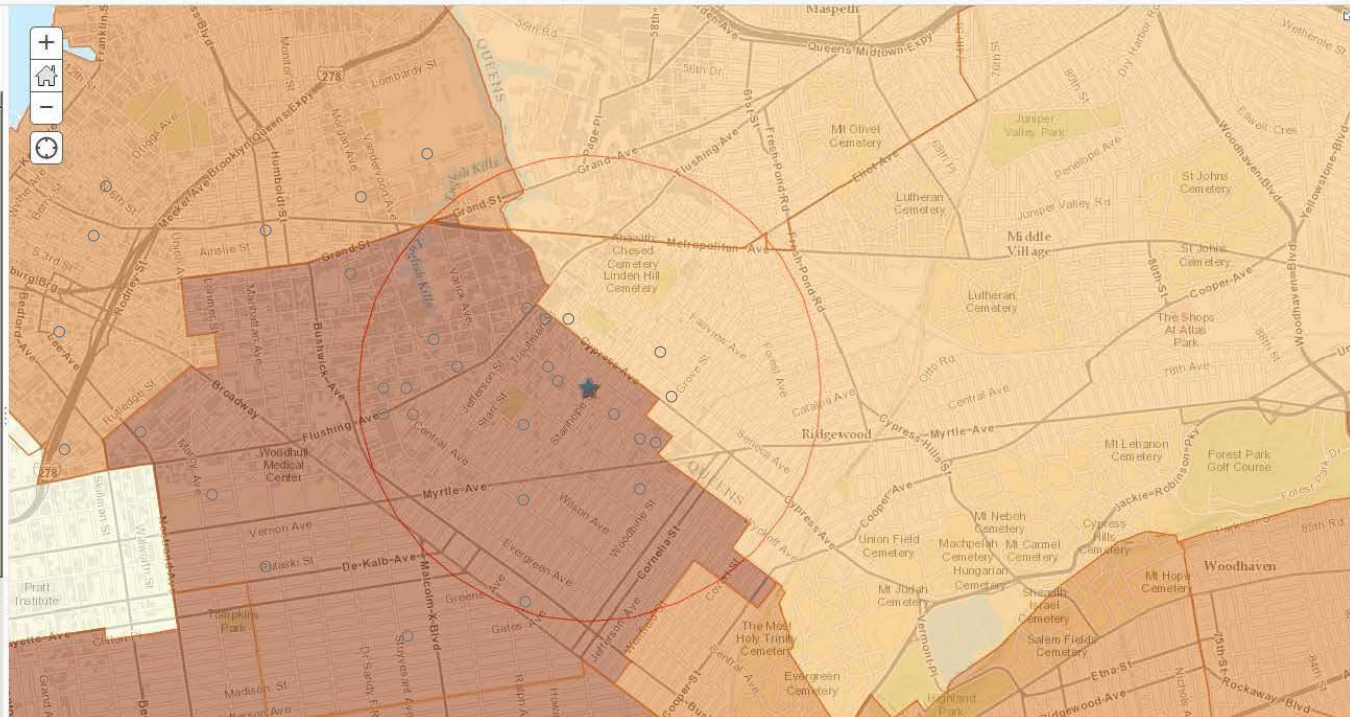
Find address or place

Q

About Content Legend

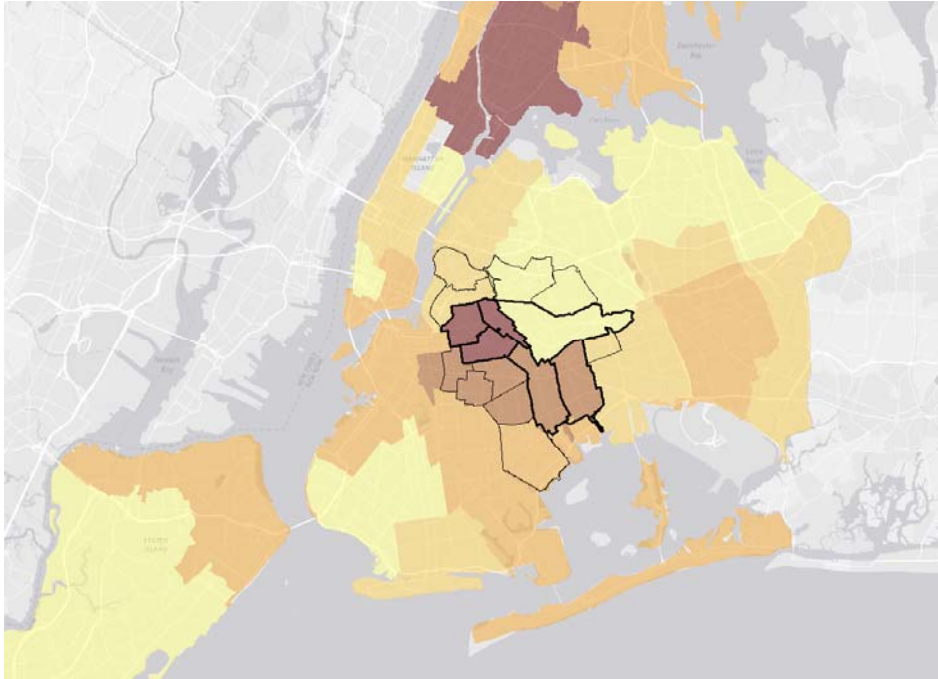
## Contents

- ☐ Beneficiaries with Chronic Asthma
- ☐ Beneficiaries with Chronic Cardiovascular Disease
- ☐ Doctors - Wyckoff Safety Net
- ☐ Doctors - Privileged by Wyckoff
- ☐ Doctors - Employed by Wyckoff
- ☐ Doctors - Maimonides DSRIP
- ☐ Land Use: Industrial 11385
- ☐ Primary Race
- ☐ Grand Street Settlement Sites
- ☐ RBSCC
- ☐ Diabetes Prevalence 2011 - Diabetes Rate, 2011
- ☒ Obesity Prevalence 2011 - ObesityUHF2011
- ☐ Voluntary Hospitals
- ☐ Hasidic
- ☐ Education and Schools
- ☐ Churches
- ☐ Elder Care and Senior Centers
- ☐ Housing Sites



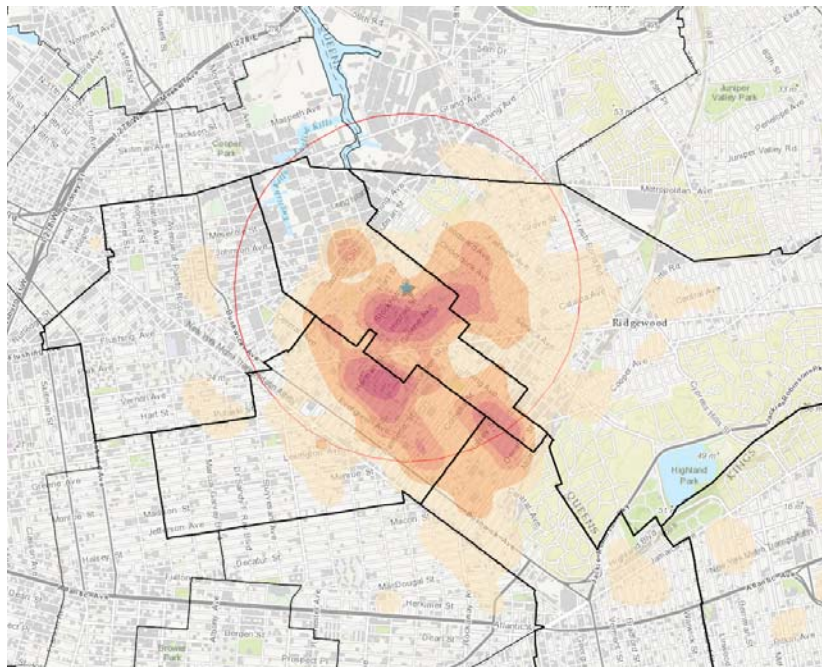
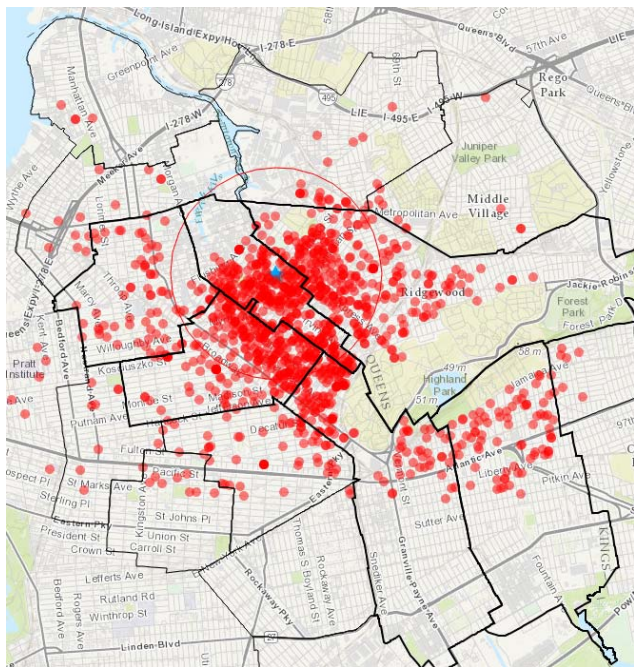
## ASTHMA PROJECT

Asthma Incidence – Youth and Adults, NYC Overall



## ASTHMA PROJECT

### Asthma Incidence – WHMC Pediatric





## ASTHMA PROJECT

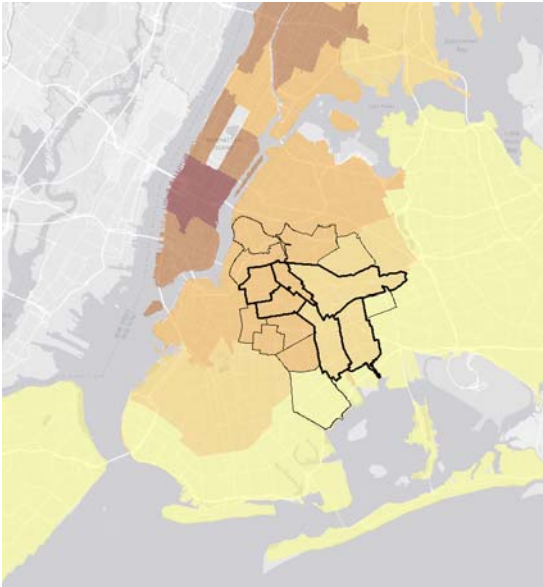
### Streets with Most Asthma Patients – WHMC Patients



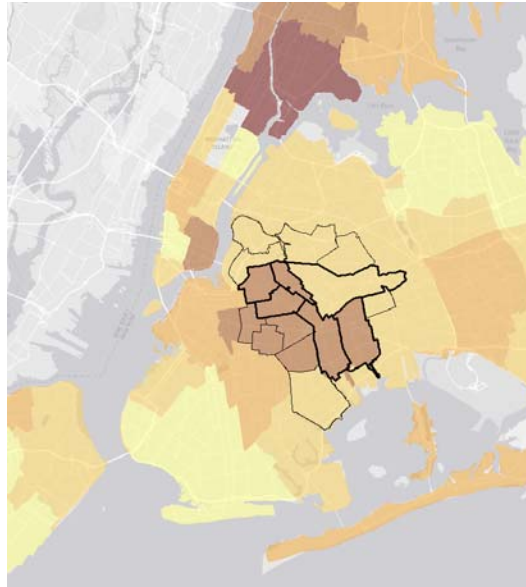
Street	# Patients	# Occurrences
<b>MENAHAN ST</b>	<b>97</b>	<b>137</b>
GATES AVE	79	109
HARMAN ST	72	114
HIMROD ST	70	94
WILSON AVE	69	87
LINDEN ST	68	89
STOCKHOLM ST	63	76
GROVE ST	61	78
HANCOCK ST	59	66
WOODBINE ST	58	65
CENTRAL AVE	57	83
MADISON ST	56	70
HART ST	56	67
PUTNAM AVE	55	65
PALMETTO ST	55	71
GREENE AVE	55	81
CORNELIA ST	55	64
JEFFERSON AVE	52	66
BUSHWICK AVE	52	62
BLEECKER ST	52	66
SUYDAM ST	51	58
IRVING AVE	51	59
KNICKERBOCKER AVE	49	85
FLUSHING AVE	49	60
HALSEY ST	48	71
STANHOPE ST	47	56
DEKALB AVE	47	57
DECATUR ST	47	62

## ASTHMA PROJECT

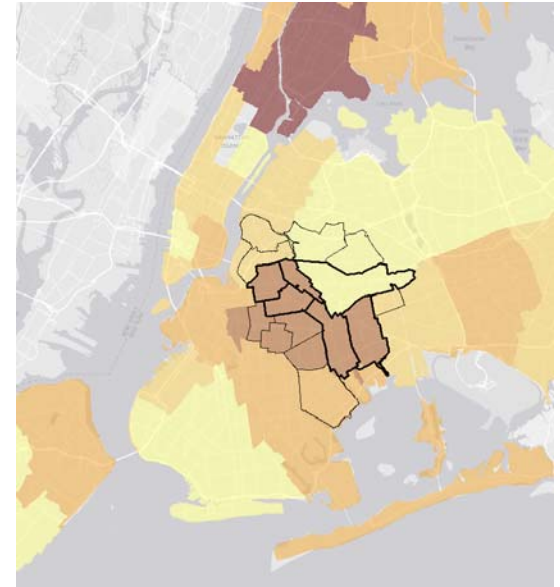
### Air Quality – Fine Particulate Matter



Fine particulate Matter



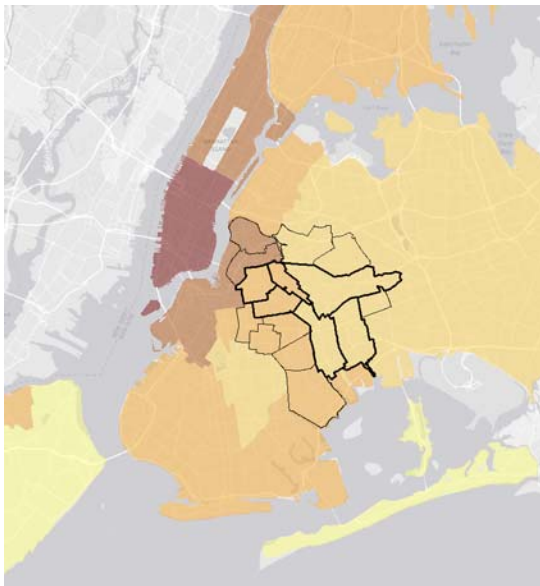
PM2.5 Attributable Asthma ED Visits\_ Children



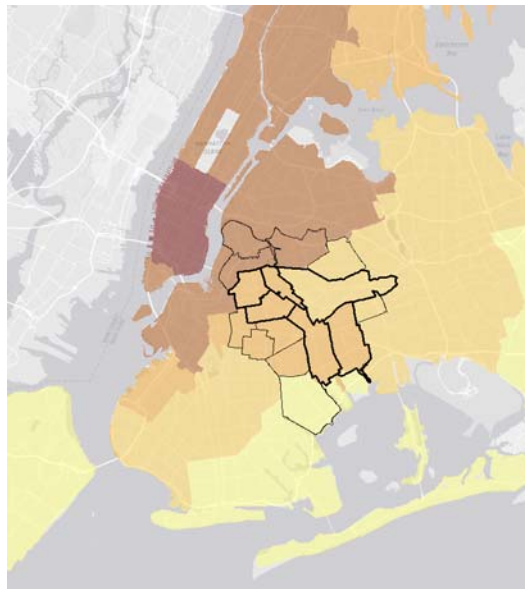
PM2.5 Attributable Asthma ED Visits: Adults

## ASTHMA PROJECT

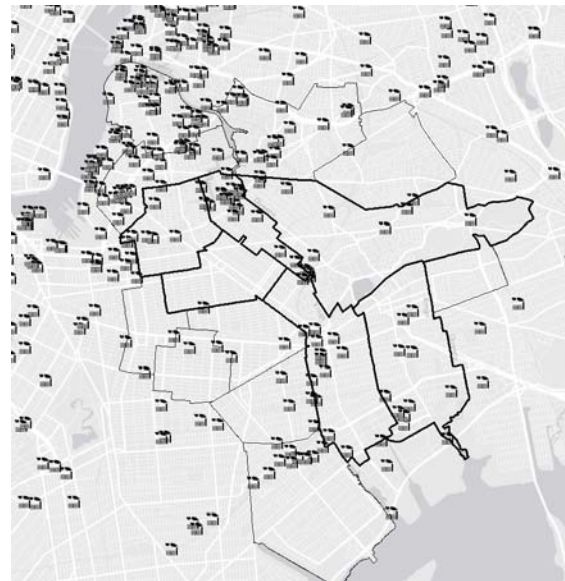
### Air Quality - Contaminants



Benzene



Elemental Carbon

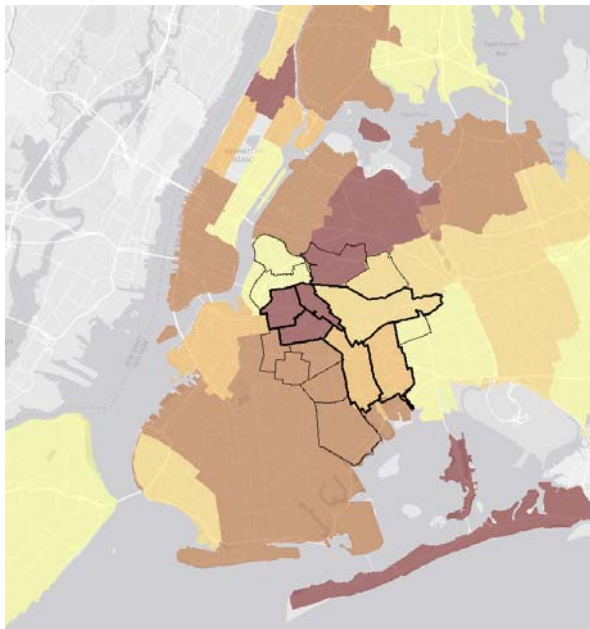


EPA Regulated Facilities

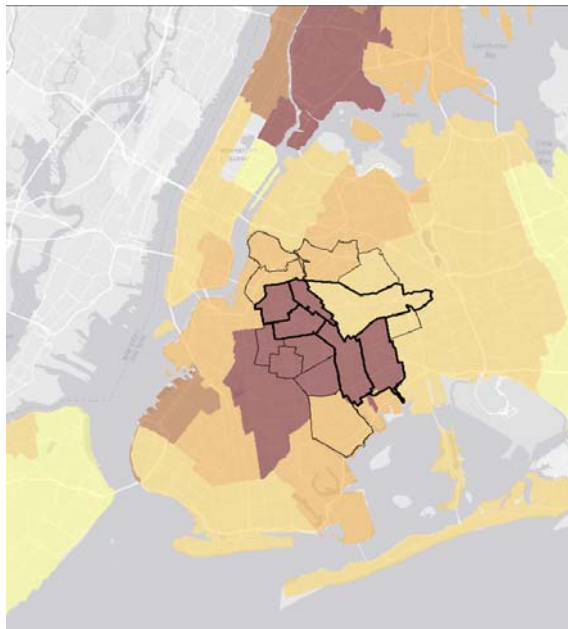


## ASTHMA PROJECT

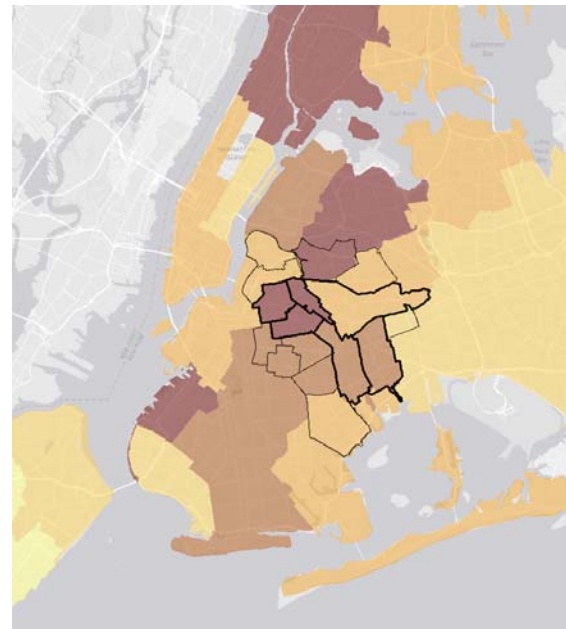
### Housing Quality – Pests



Adults Reporting Bedbugs in the Home



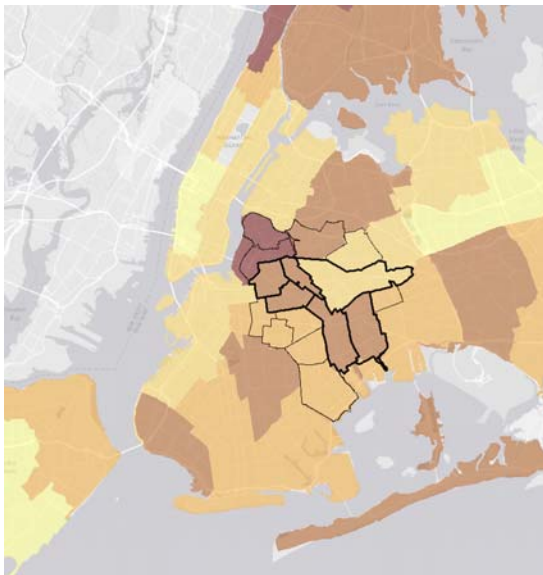
Homes with Mice or Rats in the Building



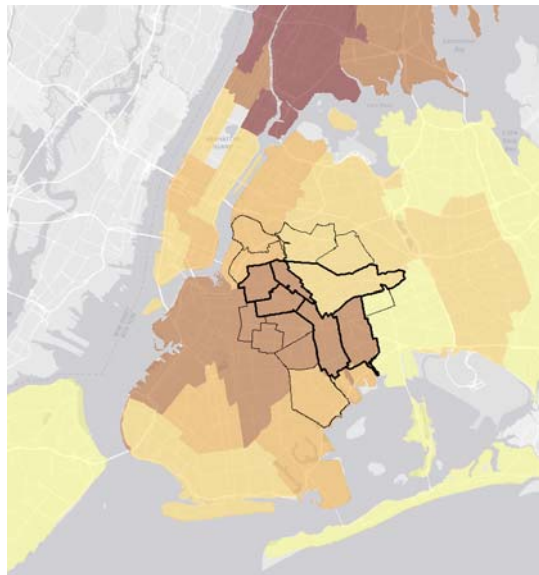
Adults Reporting Cockroaches in the Home

## ASTHMA PROJECT

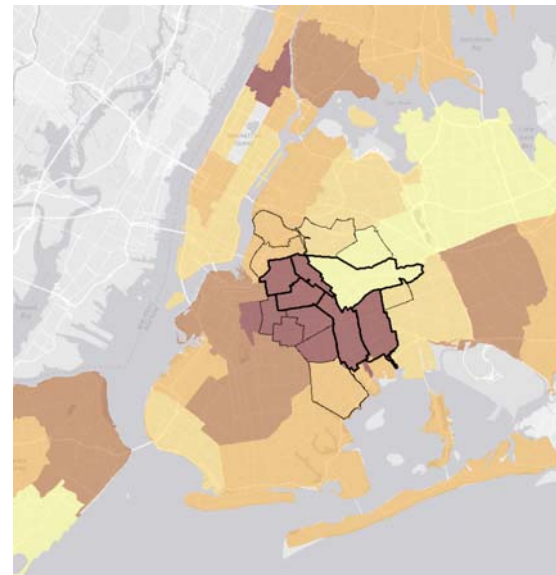
### Housing Quality - Buildings



Adults Reporting Mold in the Home



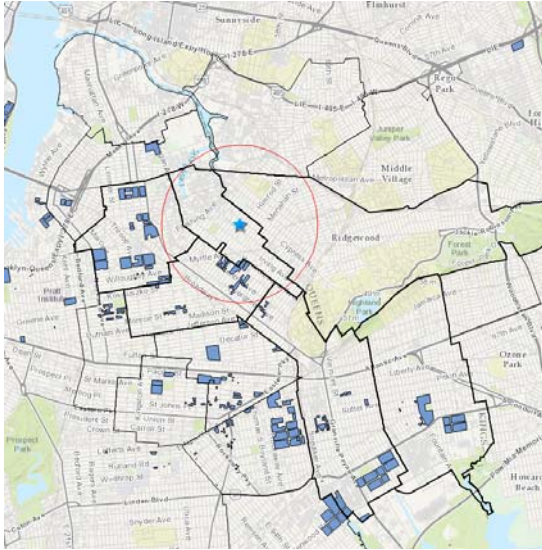
Homes With Cracks or Holes



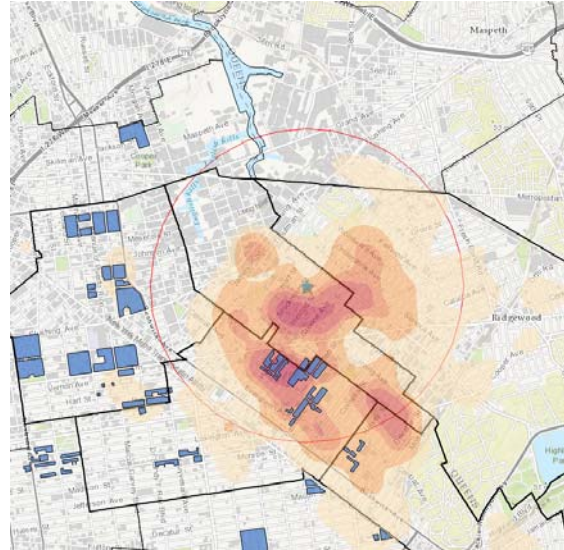
Homes Near Boarded Up Buildings

# ASTHMA PROJECT

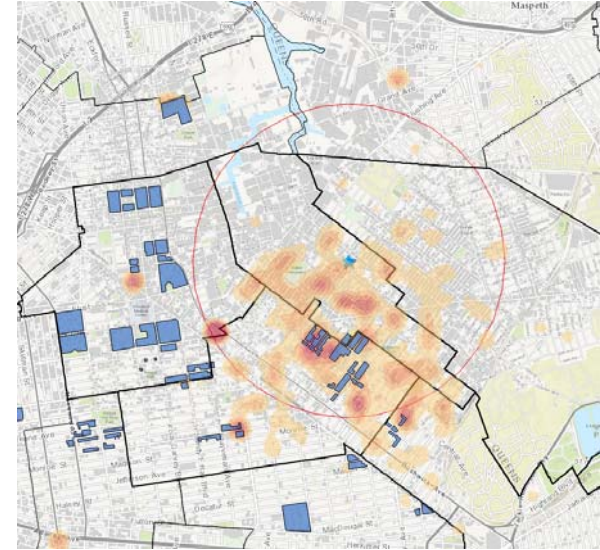
## Housing Quality – NYCHA Developments



NYCHA Developments



Pediatric Asthma Heat Map with NYCHA Developments

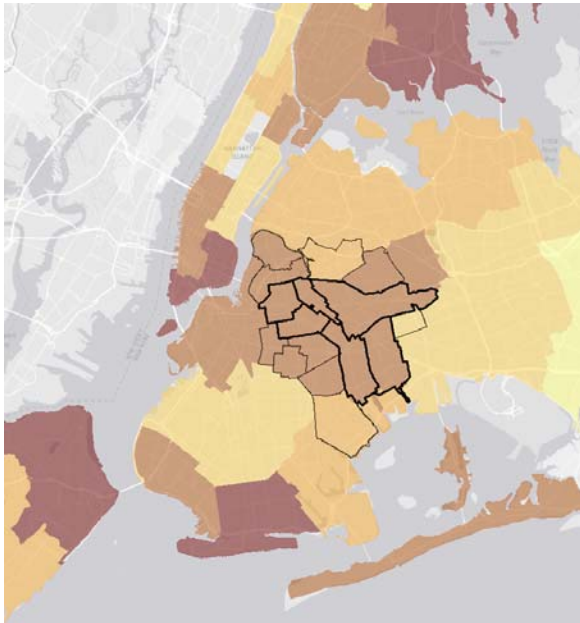


Adult Asthma Heat Map with NYCHA Developments

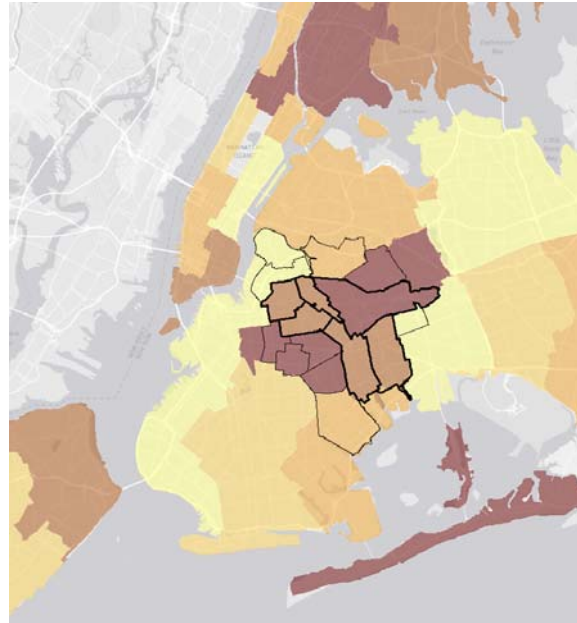


## ASTHMA PROJECT

### Behavior – Smoking



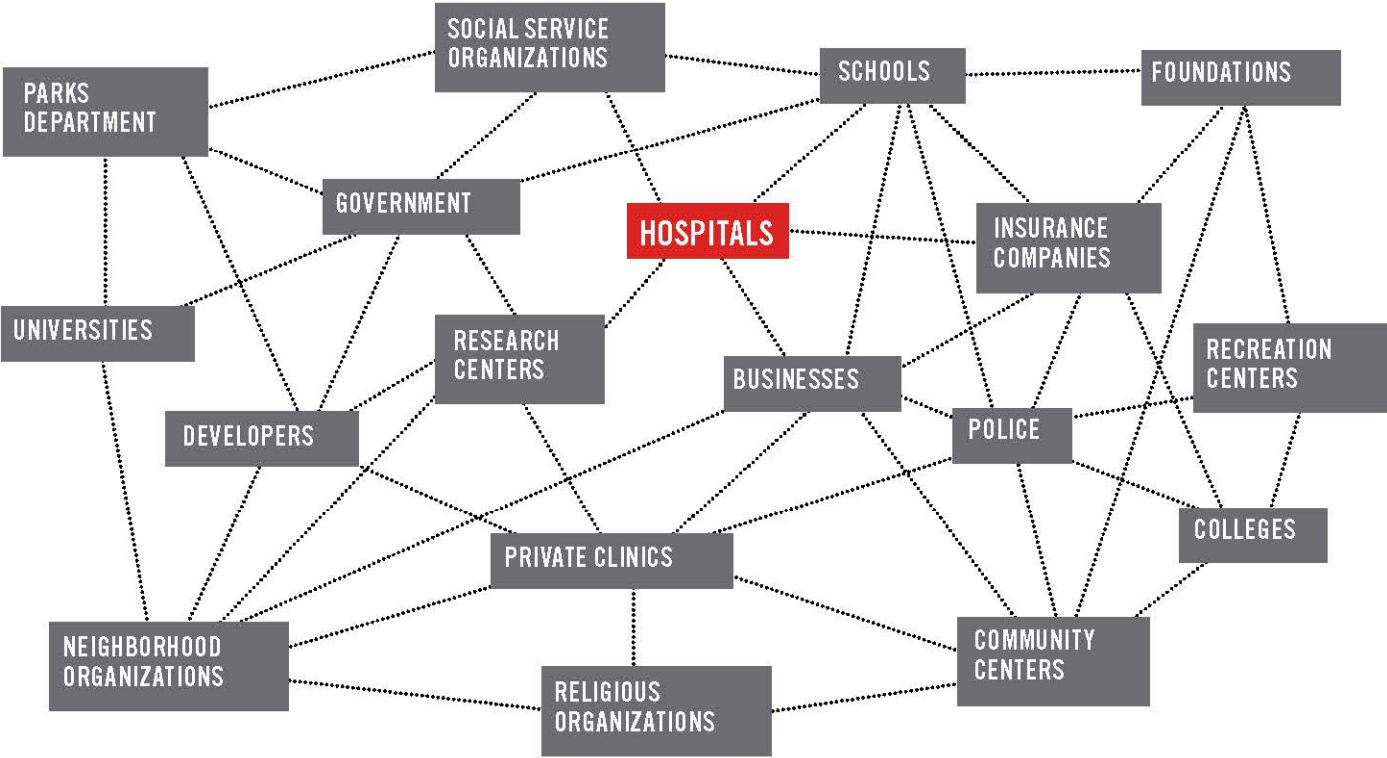
Smoking among Adults



Secondhand Smoke at Home

**How we see then guides what we do**

# CREATING A COALITION AROUND HEALTH





## BENEFITS

**PARTNERSHIPS = MORE \$\$\$**

**CARE DELIVERY PARTNERSHIPS:**

**COST EFFICIENCIES ↑**

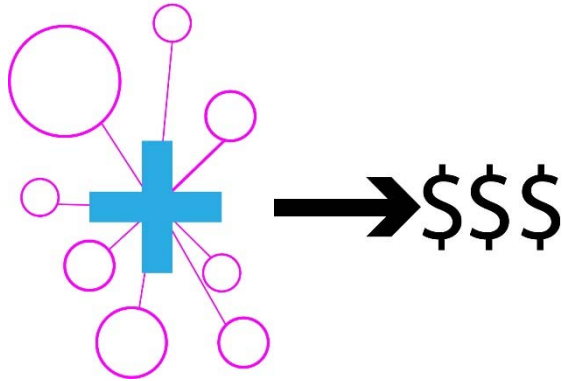
**IMPLEMENTATION PARTNERSHIPS:**

**RESOURCES ↑**

**KNOWLEDGE-BASE ↑**

**GRANT-ABILITY ↑**

## ABOUT THE MONEY



- **Potential Funding Sources:**
- Taxation on healthcare providers and community stakeholders
- City Sponsored Incentives
- State Funding
- Federal Funding
- Voluntary gifts
- Fundraising
- Community Micro-Loans
- Foundation Grants
- Physical Space and Volunteer hours donation

## SYNERGISTIC PROJECTS

### CREATIVE COLLECTIVE COMMUNITY FUNDING

- 
- Public- and Private-sector committee
  - HID Master Plan
  - Data Clearinghouse:
  - Material Spec Review
  - “Do No Harm” Commitment
  - New/Upgrading Open Space/Recreation Space:
  - Education Partnering:
  - Food Access:
  - Interior Environment Auditing:
  - Street Greening:
  - Intersection Calming:
  - Closing of Waste Streams:
  - Community Micro-Loans:
  - Health Event Planning:
  - After School Programs
  - Real Estate + Development:
  - Job Center + Training:
  - Street Safety/Calming



**By seeing more broadly, we find ways to make our infrastructure work harder for us and to leverage mutual benefits in our communities.**



# HEALTH DISTRICTS

## MAKING OUR INFRASTRUCTURE WORK HARDER FOR US

DR. JANICE BARNES  
GLOBAL RESILIENCE DIRECTOR

# PERKINS+WILL

This work is the results of collaborations on the Asthma Project led by Breeze Glazer and the Wyckoff Health Improvement District led by Jason Harper, Daniel Windsor, Mike Aziz, Andrew Salvesson and Brad Rogers.