

Community-Led Relocation: Interdisciplinary Research Supporting Community-based Adaptation and Policy

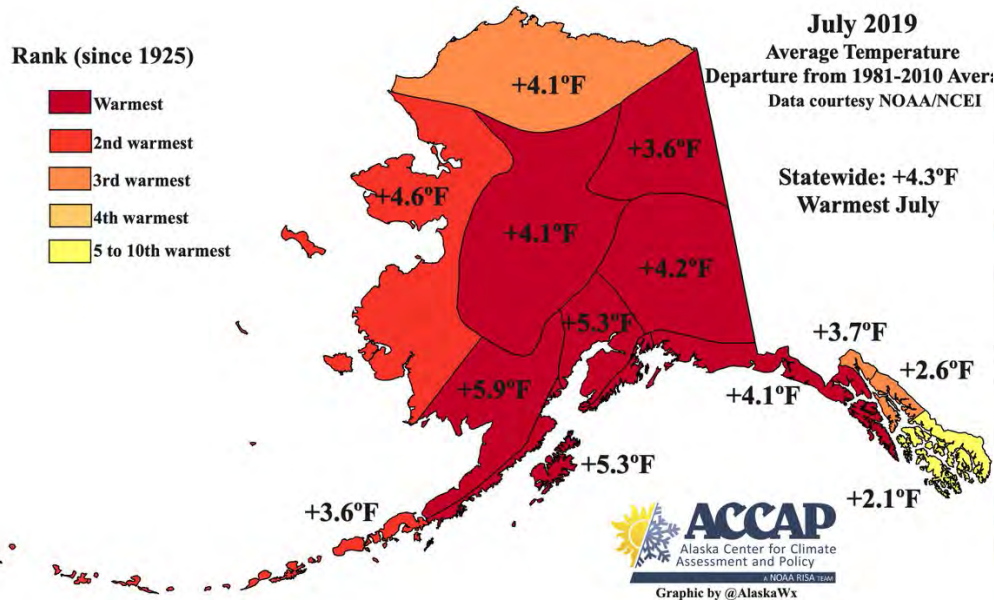


Robin Bronen, J.D., PhD
Alaska Institute for Justice
University of Alaska Fairbanks

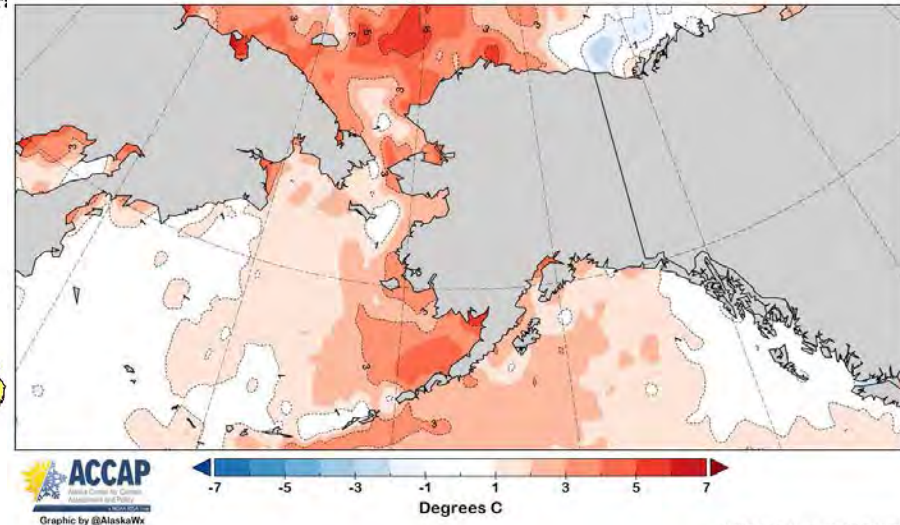
POLAR AMPLIFICATION

Rank (since 1925)

- Warmest
- 2nd warmest
- 3rd warmest
- 4th warmest
- 5 to 10th warmest



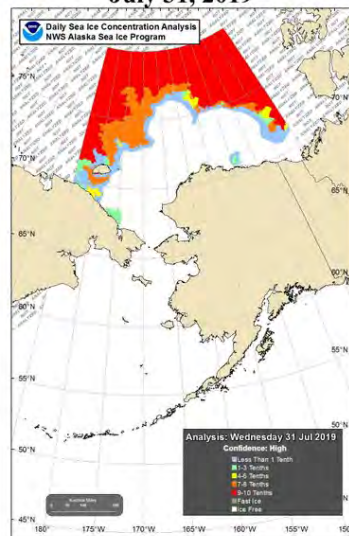
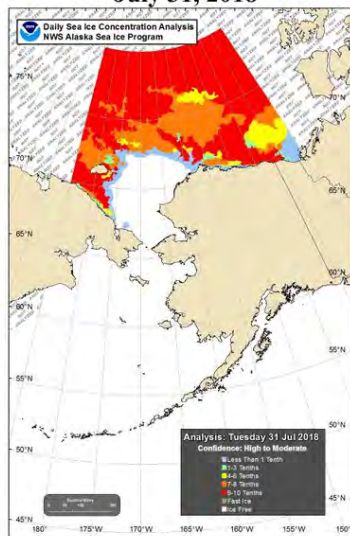
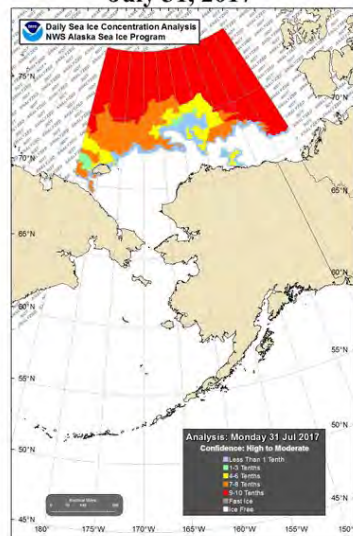
Sea Surface Temperature Departure from Normal
August 23-29, 2019



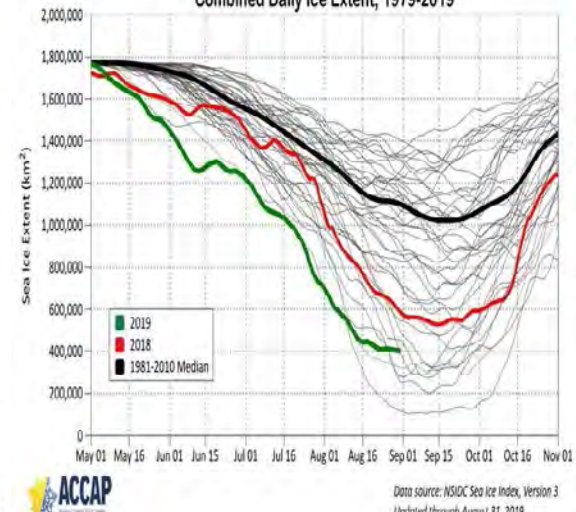
July 31, 2017

July 31, 2018

July 31, 2019

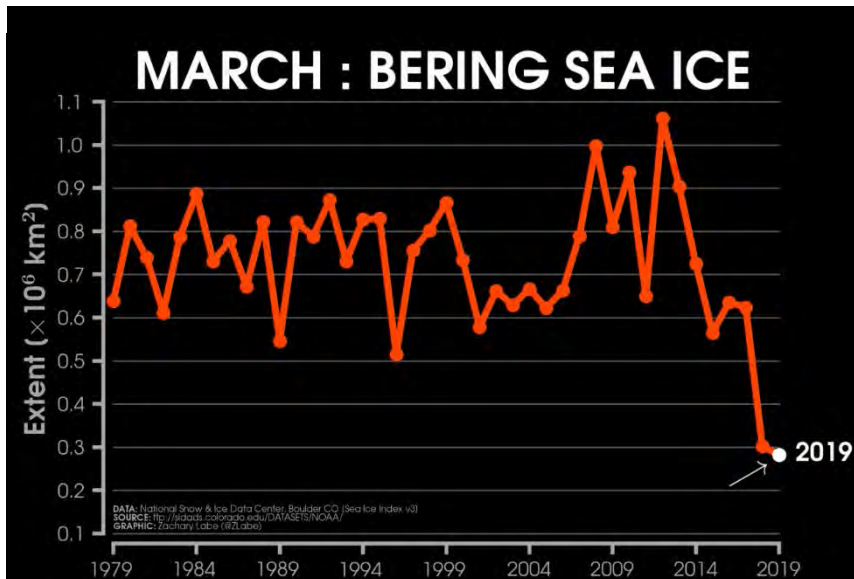


Chukchi & Beaufort Seas
Combined Daily Ice Extent, 1979-2019



Tipping Points of Community Habitability

Combination of repeated and frequent extreme weather events and slow-ongoing environmental change



Decreased arctic sea ice,
thawing permafrost



Usteq – catastrophic land collapse

15 Alaska Native Communities

**All imminently
threatened by
flooding and
erosion.**

Two decided to
relocate.



Planned Community Relocation: What is it?

- **Voluntary**
- **Disaster Risk Reduction:** prior to displacement of populations caused by extreme weather event
- **Planned: long-term process**
- **Protect Human Rights**
- **Community:** Rebuild homes, infrastructure and livelihoods
- **Maintain Social and Kinship Connections**

Four Governance Issues

- NO government agency has the mandate or funding to relocate a community
- WHO makes the decision?
- WHEN: No institutional framework to determine the point in time when relocation needs to occur
- HOW can relocation occur prior to the occurrence of an extreme weather event that displaces people?
- HOW can human rights be protected?

Adaptive Relocation Governance Framework Human Rights Protections



Protection
in Place

Relocation
Indicators

Community
Relocation

Community-based environmental monitoring: Integration of Indigenous Knowledge with Atmospheric and Physical Science

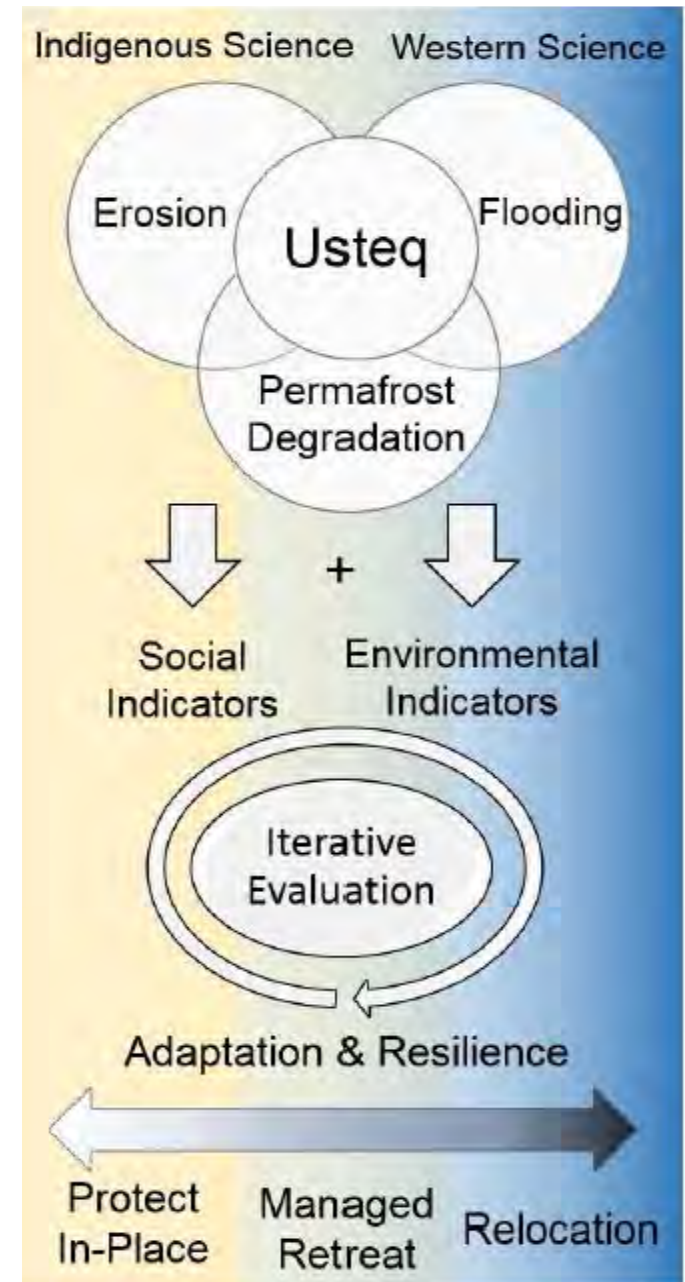


Kwigillingok: Erosion along barge landing site on Kuskokwim Bay in 2011. Yellow plastic poles are placed along the bank to measure rates of erosion.

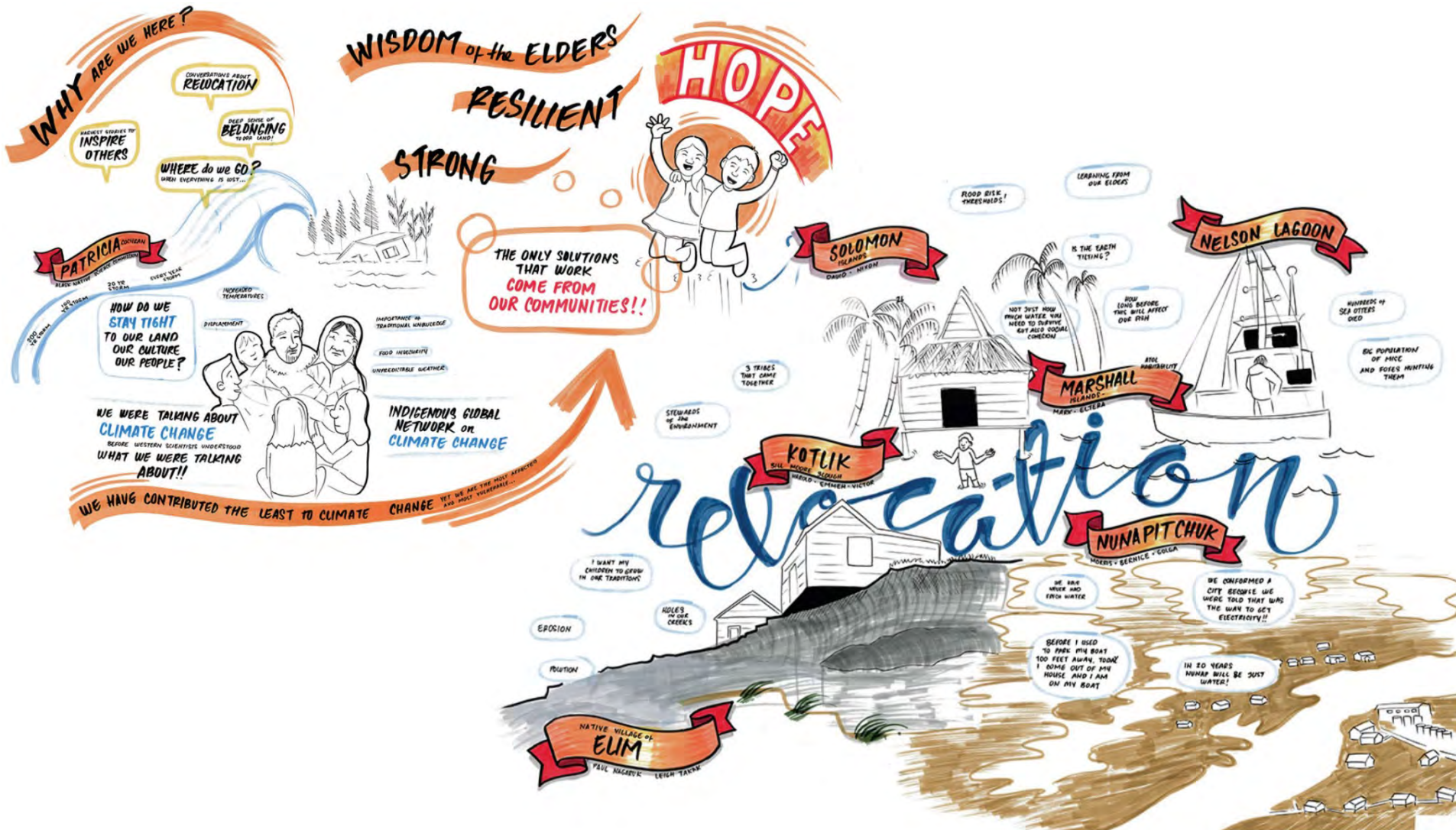


Kotlik: Bank erosion protection installed in 1985.

Environmental Monitoring to Create Policy Change



First Peoples and Indigenous Peoples Declaration on Climate-Forced Displacement



Acknowledgements

Chinik Eskimo Community

Native Village of Elim

Native Village of Eyak

City of Kivalina

Native Village of Kivalina

Village of Kotlik

Native Village of Kwigillingok

Native Village of Nelson Lagoon

Native Village of Nunapitchuk

Native Village of Port Heiden

Native Village of Kwinhagak

Native Village of Shishmaref

Native Village of Teller

Native Village of Unalakleet

