

Board on Environmental Change and Society

DIVISION OF BEHAVIORAL AND SOCIAL SCIENCES AND EDUCATION

Major transitions are on the horizon at the intersection of human activity and the global environment. Human societies themselves are being transformed, and these changes are interacting with and even accelerating environmental change. There is much debate about how to achieve long-term environmental sustainability and cope with unavoidable environmental impacts and dislocations.

MISSION

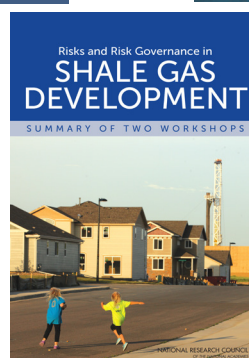
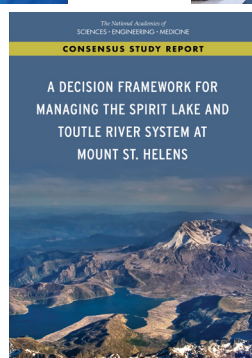
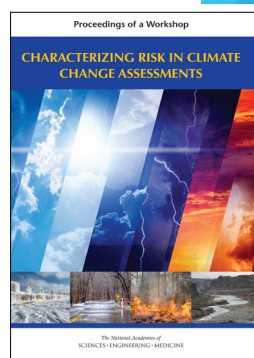
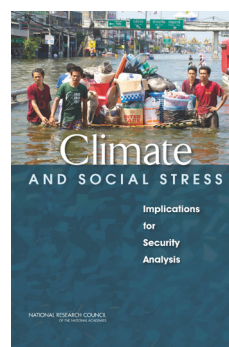
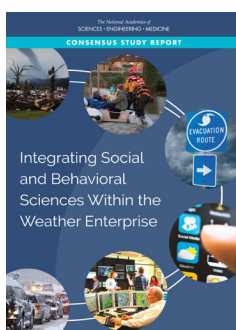
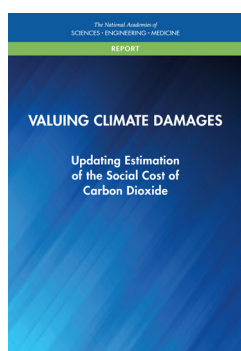
The Board on Environmental Change and Society (BECS) mobilizes social and behavioral sciences to identify equitable and effective solutions to the challenges at the intersection of environmental change and society. Such solutions must consider drivers of behavior and decision making at all scales, including individuals, communities, businesses and governments. Critical drivers include societal values, norms, socioeconomic factors, markets, and policies. The Board draws on interdisciplinary expertise to address the social, political, economic and equity dimensions of environmental change.

HISTORY

BECS evolved from the Committee on Human Dimensions of Global Change, which since 1989 has helped to guide research on the interactions between human activities and the environment. It provided a forum for linking the social and natural sciences in research, planning, and decision making. BECS continues in this tradition, while expanding on the types of issues that it may consider, to address emerging scientific and governmental concerns.

REPORTS

BECS has issued a broad array of consensus study reports and proceedings that bring science to bear on problems and questions faced by researchers, policy makers, and practitioners in a range of domains. The most recent BECS publications are shown below. For a complete list of BECS publications please visit: www.nationalacademies.org/BECS.



BECS COMPRISES EXPERTISE IN

- decision sciences, including both analysis and decision support;
- socio-ecological interactions, including resilience of communities;
- economic policy and analysis, including economic drivers, impacts and responses, and evaluation of environmental outcomes;
- climate, biophysical and biogeochemical processes, and ecology;
- energy and natural resource management;
- public and environmental health policy;
- environmental governance, including risk analysis and governance; and
- national and international sustainable development.

CURRENT & FORMER SPONSORS

- Alfred P. Sloan Foundation
- George and Cynthia Mitchell Endowment for Sustainability at the National Academies of Sciences, Engineering, and Medicine
- National Science Foundation
- Park Foundation
- U.S. Department of Energy

HOW TO CONTACT US

Board on Environmental Change and Society
Toby Warden, Ph.D.
Board Director
500 5th St., NW
Washington, DC 20001
Phone: 202-334-3453
Email: mwarden@nas.edu
www.nationalacademies.org/BECS

To download or purchase publications:
www.nap.edu 1-888-624-8373



BECS BOARD MEMBERS

Kristie L. Ebi, *Chair*, University of Washington; **Hallie C. Eakin**, School of Sustainability, Arizona State University; **Lori Hunter**, Population Research Program, University of Colorado Boulder; **Katharine L. Jacobs**, Institute of the Environment, University of Arizona; **Michael A. Mendez**, Yale School of Forestry and Environmental Studies; **Richard G. Newell**, Resources for the Future, Washington, DC; **Aseem Prakash**, Department of Political Science, University of Washington; **Maxine L. Savits (NAE)**, Technology/Partnerships Honeywell Inc. (retired), Los Angeles, CA; **Michael Vandenberg**, Vanderbilt University School of Law; **Jalonne White-Newsome**, Kresge Foundation; **Cathy L. Whitlock**, Paleoecology Lab, Montana State University; **Robyn S. Wilson**, School of Environment and Natural Resources, Ohio State University

Division of Behavioral and Social Sciences and Education

The National Academies of
SCIENCES • ENGINEERING • MEDICINE

The nation turns to the National Academies of Sciences, Engineering, and Medicine for independent, objective advice on issues that affect people's lives worldwide.

www.national-academies.org