

National Health Interview Survey

Marcie Cynamon
Director, Division of Health Interview Statistics
National Center for Health Statistics



National Health Interview Survey

- ❑ **Purpose:** To monitor the health of the US population through the collection and analysis of data on a broad range of health topics
- ❑ **Sample:** Address based, multi-stage, clustered national sample of housing units from every state, to be representative of the civilian noninstitutionalized US population
- ❑ **Mode:** In-person interviews by Census interviewers, some phone follow-up
- ❑ **Data collection:** Continuous, with quarterly and annual data files
- ❑ **Base Target :** Complete interviews for 35,000+ households

Basic Content and Structure of the NHIS Questionnaire, 1997-2017

☐ **Family Core**

- Demographic, general health, and insurance coverage
- For all family members
- Proxy responses allowed

☐ **Sample Adult Core**

- Health conditions, risk behaviors, and health care utilization data
- For one randomly selected adult in each family
- Self-response only

☐ **Sample Child Core**

- Health conditions and health care utilization data
- For one randomly selected child in each family
- Knowledgeable adult responds for child

2018 NHIS Questionnaire Redesign

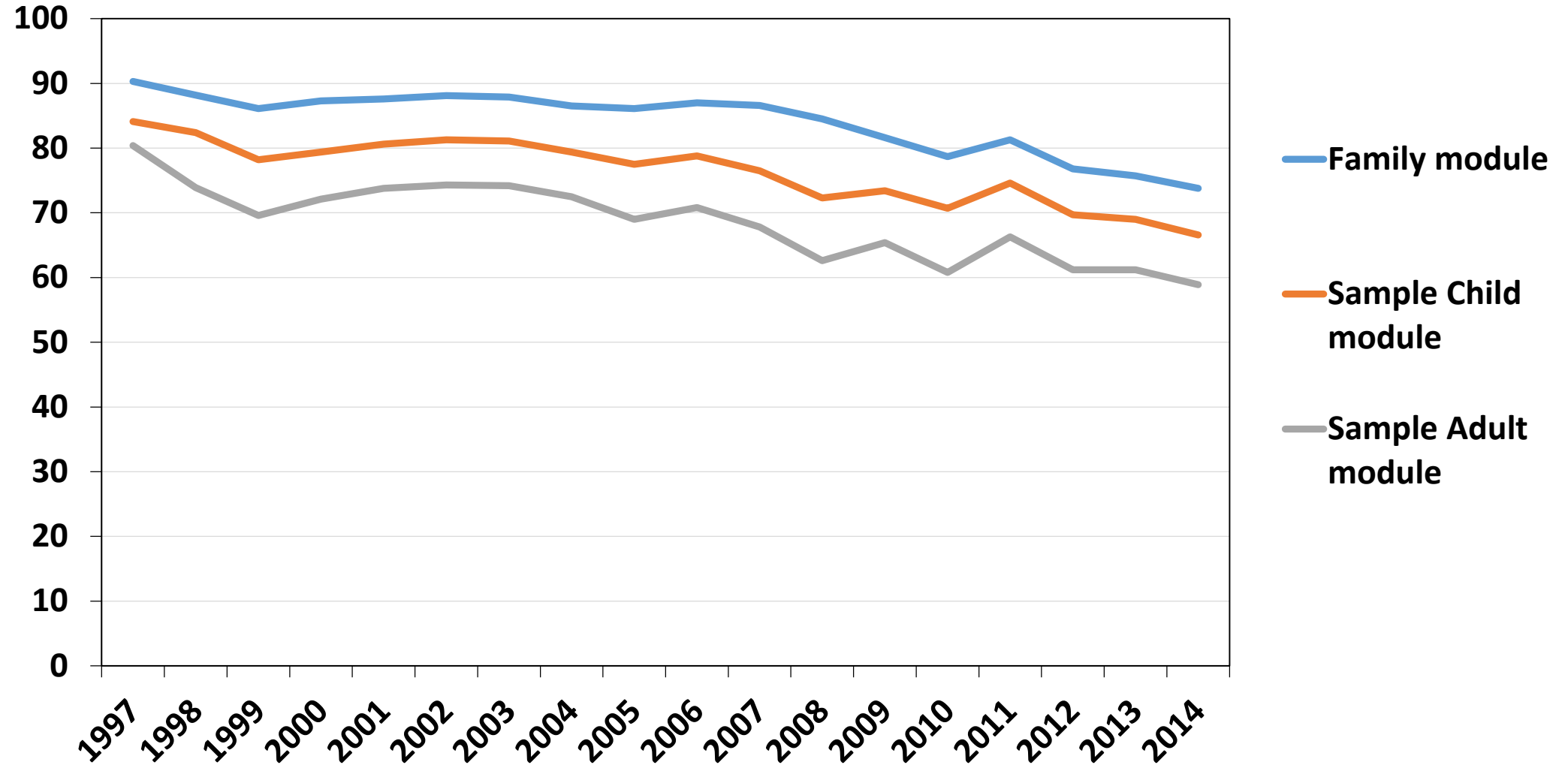
□ **Goals of the redesign:**

- Improve the measurement of covered health topics
- Reduce respondent burden by shortening the questionnaire – 30%
- Harmonize overlapping content with other federal health surveys
- Establish a long term structure of ongoing and periodic topics
- Incorporate advances in survey methodology and measurement

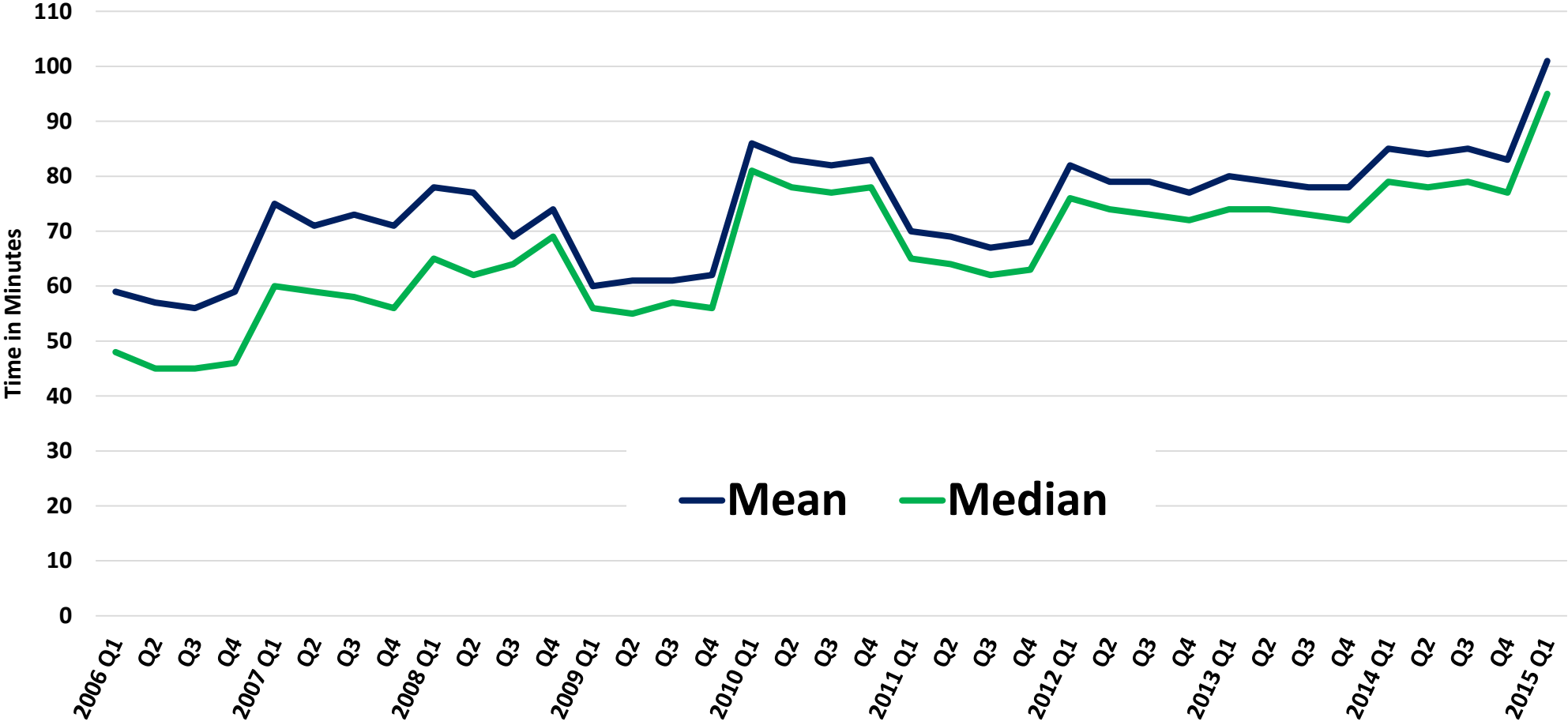
□ **Timeline**

- 2014 – 2015: Stakeholder engagement, outreach
- 2015 – 2016: Qualitative and quantitative assessments
- Summer 2016 – Spring 2017: OMB review and public comment
- Late Spring 2017: Revised questionnaire programmed
- January 2018: Revised questionnaire fielded

NHIS Unconditional Response Rates



Length of Completed Interviews (in minutes), by Quarter



Proposed Content and Structure of the NHIS Questionnaire, 2018 and beyond

☐ **Family-all persons**

- Age, sex, race, total income/benefits/FPL, active duty military, family size/structure, any employment, home ownership/subsidies
- Proxy responses allowed

☐ **Sample Adult Core**

- Health insurance, protective and risk factors, health care utilization, disability, marital status, education, employment, work limitations, injuries,
- For one randomly selected adult in each household
- Self-response only

☐ **Sample Child Core**

- Scope of content under development
- For one randomly selected child in each family
- Knowledgeable adult responds for child

Additional Features of the Redesign

☐ **Core Modules**

- Essential annual content

☐ **Rotating Core Modules**

- Not needed every year

☐ **Supplemental Modules**

- Sponsored content-one question or up to 5 minutes per topic per year

Content Areas with Relevance to Monitoring Public Health

- Leading causes of morbidity/mortality
- Health insurance coverage
- Health care access and utilization
- Targets of major federal health promotion initiatives
- Behavioral risk or protective factors for the above relevant content areas
- Other factors that identify populations most at risk for or protected from the above relevant content areas (e.g., family income)
- Intermediate health outcomes for the above relevant content areas

Contact Us

http://www.cdc.gov/nchs/nhis/2018_quest_redesign.htm

Suggestions?

E-mail healthsurveys@cdc.gov