



Smithsonian
*National Museum of African American
History and Culture*

“This Museum seeks to help all Americans remember, and by remembering, this institution will stimulate a dialogue about race and help foster a spirit of reconciliation and healing.”

Lonnie Bunch



Four Pillars of the Museum:

- An exploration of African American history and culture
- A lens into what it means to be American
- Telling the African American story in an international context
- A place of collaboration



Rendering of view from Madison Drive

FRELON ADJAYE BOND / SMITHGROUP



Timeline to Construction:

- 2003- Enabling legislation (offered four sites)
- 2005- Site selection study
- 2006- Historic preservation consulting parties formed
- 2006- Draft Environmental Impact Statement
- 2008- Architectural and exhibit programing
- 2009- Design architects selected
- 2011/12- Site utilities commence
- 2012- Official Groundbreaking Celebration





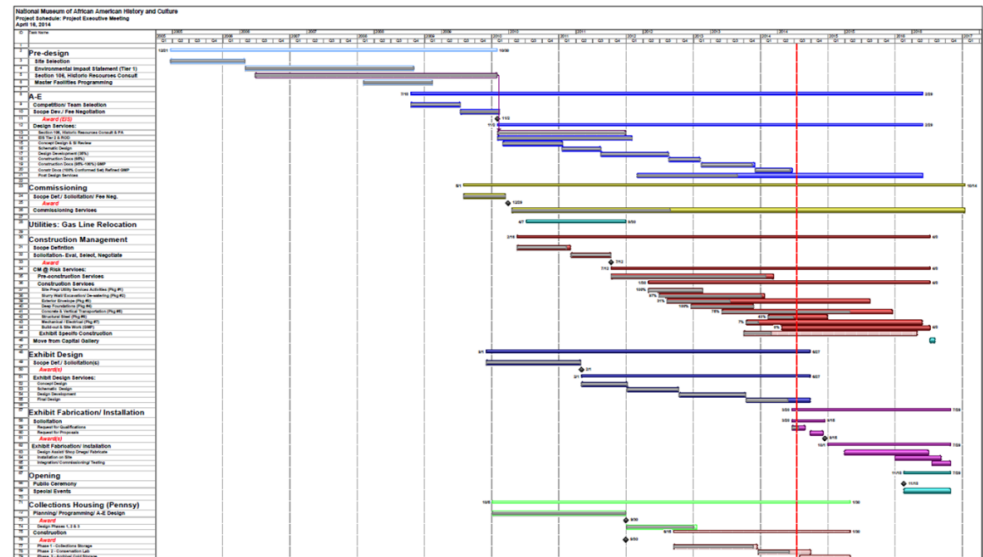
Funding and Appropriations:

- **Enabling legislation stipulated 50% federal and 50% non-federal funds**
- **Total project budget \$540M:**
 - \$270M Federal appropriations from FY2005 through FY2015
 - \$270M Trust fund contribution
 - Includes:
 - Planning and Design
 - Construction and Construction Management
 - Commissioning
 - Exhibit Design and Fabrications



Integrated Project Management:

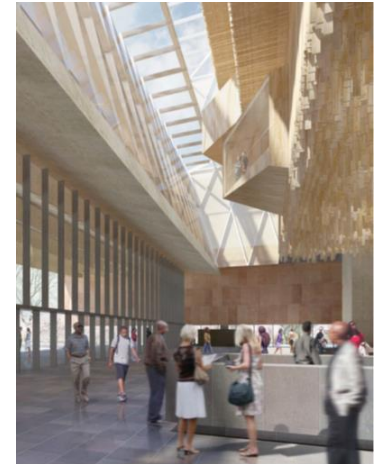
- EIS/Section 106
- Master Facilities Planning
- Building Design
- Commissioning
- Gas Line Relocation
- Construction Packages
- Exhibit Design
- Exhibit Fabrication + Installation
- Off-site Collections Facilities





Building Design: 2009-2013

Design Competition



Three Irreducible Elements:

- Corona
- Porch
- Color (Bronze)





Building Design: 2009-2013

Environmental Analysis



- **National Historic Preservation Act, Section 106**
- **Consulting parties organized 2006**
- **Met regularly through 2011**
 - **Crafted mitigation measures**
 - **Programmatic Agreement resulting document**
 - **Adopted by NCPCH with EIS ROD Nov 2011**

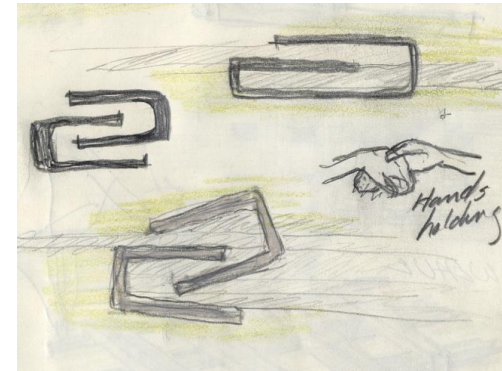
Environmental Impact Statement: Three building concept designs





Building Design: 2009-2013

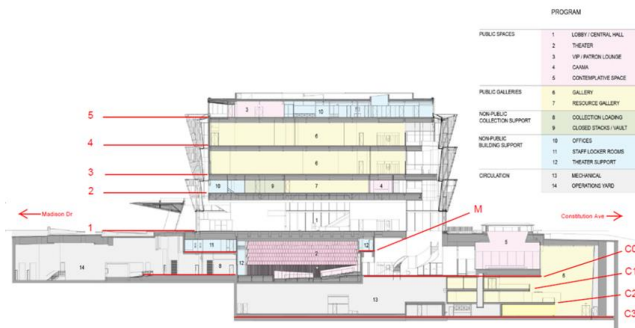
Landscape Concept





Building Design: 2009-2013

Interpretive Galleries

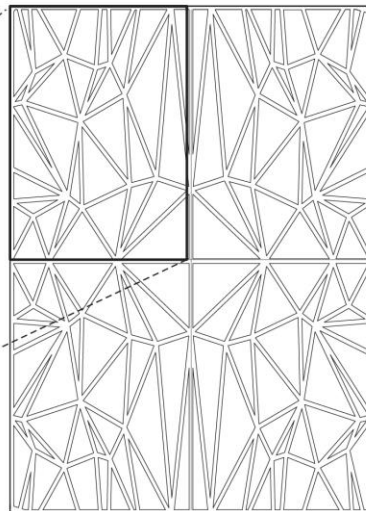
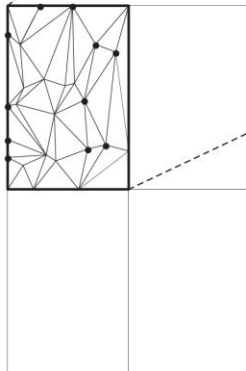


*A place of Inspiration reflecting
African American Resiliency
and Spirituality*



Building Design: 2009-2013

Corona Panel





Building Design: 2009-2013

Sustainability

Features achieved:

- Passive solar shading on facade
- Maximized interior day lighting
- Efficient low water plumbing fixtures
- Reduced stormwater run-off with green roofs
- Harvested rainwater for site irrigation and fixture flushing
- Roof top photo voltaic panels for hot water heating
- Enhanced commissioning

Features not achieved:

- Geothermal heat pumps on site
- Shared cooling tower with NMAH



Project Delivery Alternatives:

- Design / Bid / Build (D-B-B)
- Design / Build (DB)
- Integrated Project Delivery (IPD)
- **Construction Management at Risk (CMc)**
 - Construction Manager takes risk of building the project
 - A-E remains under separate contract to the Owner
 - Overlapping phases

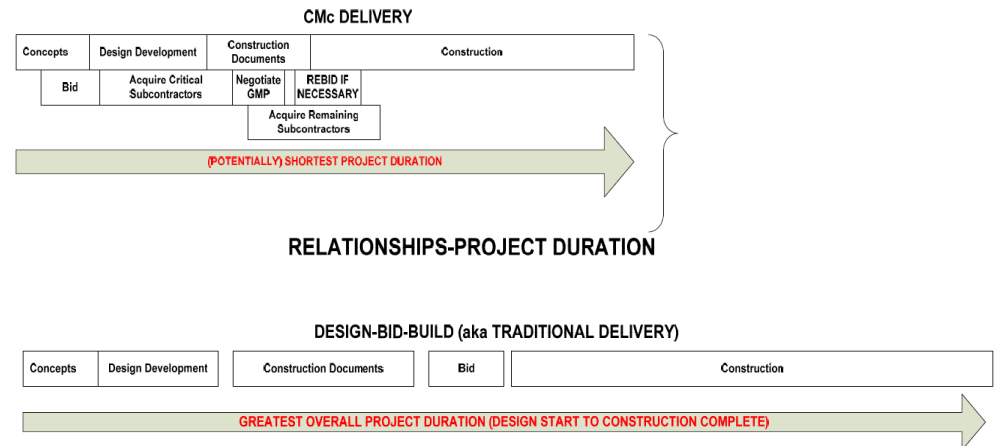
Analysis of methods and risks based on Smithsonian past experience as well as that of other agencies/owners



Construction Schedule Analysis:

Construction Completion Comparison:

- CMc Delivery:
 - Start late 2012
 - End late 2015/early 2016
- Design/Bid/Build Delivery:
 - End-to-end design: complete late 2013
 - Construction complete 2017



CM @ Risk Delivery:

- Issue Concept Design with RFP
- CM selected through "best value" process
- Awarded pre-construction services



Concurrent Design and Construction:

Jan 2012	Site Utilities Package
April 2012	Support of Excavation Wall/Excavation Package
May 2012	Exterior Enclosure Design-Assist Package
June 2012	Deep Foundation Piles Package
Sept 2012	Concrete and Vertical Transportation Package
Jan 2013	Structural Steel Package
Mar 2013	MEP/FP Package
Aug 2013	100% CDs Complete
Jan 2014	Interior Build-out & Site Work Package (GMP)

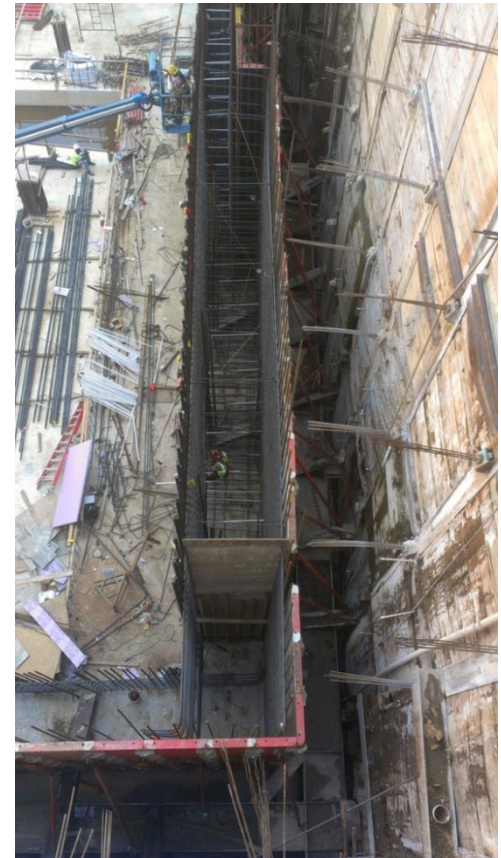


Excavation: 2012-2013





Foundations to Grade: 2013





Large Collections Coordination: 2013

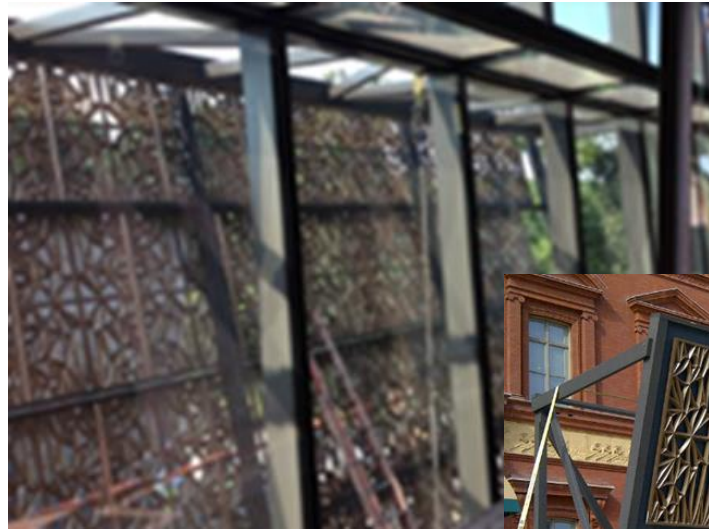




Enclosure & Corona Final Design: 2013-2014



Performance mock-up, York, PA



Commission of Fine Arts &
National Capital Planning Commission
final approval March 2014



Exhibition Design: 2010-2014



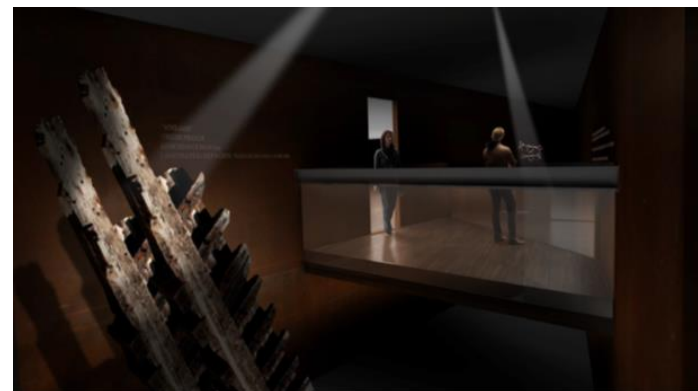
Segregated Rail Car



Military History



Civil War



Middle Passage



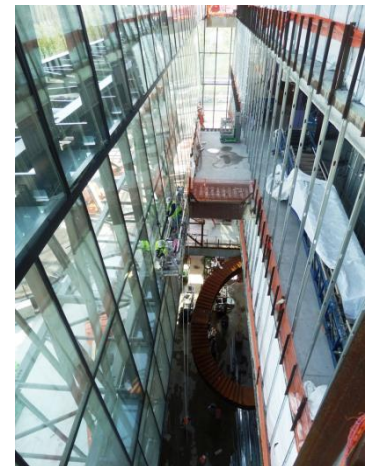
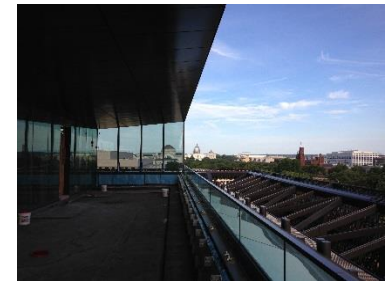
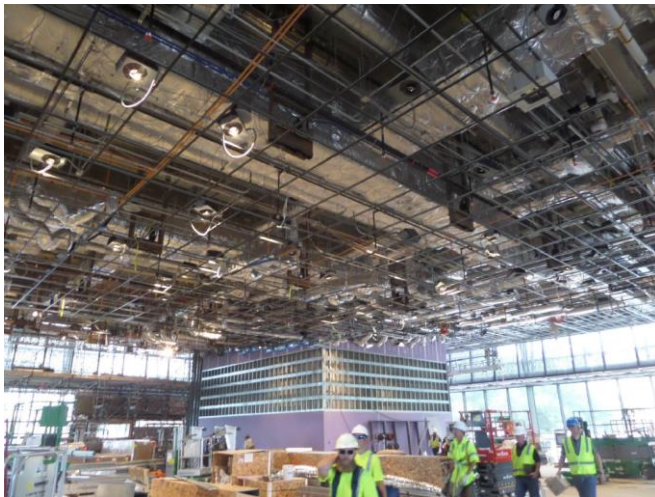
Smithsonian
*National Museum of African American
History and Culture*

Current Construction Progress: 2015





Current Construction Progress: 2015





Current Construction Progress: 2015



Oprah Winfrey Theater



History Gallery



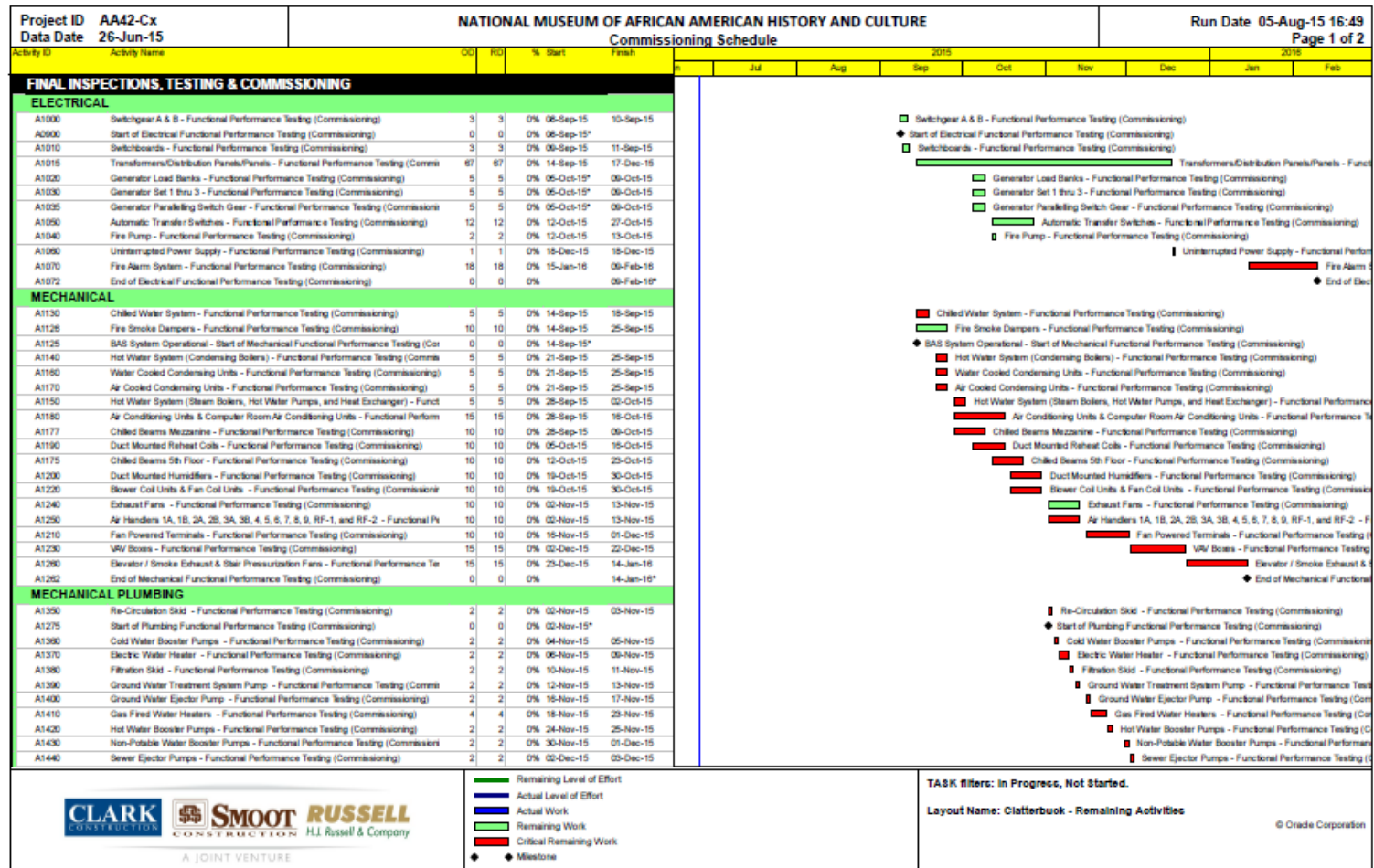


Commissioning: starts 2015





Commissioning: Schedule





Celebration: November 2015

Cultural and historical significance of 2015:

- 1865; 13th Amendment, abolishing slavery
- 1965; Voting Rights Act





Collections Installation: 2016



Shackles used to bind enslaved African children on ships crossing the Atlantic, 18th-19th century



PT-13D Stearman bi-plane used as a trainer by the Tuskegee airmen, about 1944



Headgear used by Muhammad Ali while training, about 1973



Louis Armstrong's trumpet, 1946



Public Opening: 2016

