



Integrated Security Solutions

Re-Think What Security Means

Federal Facilities Council
Workshop
18 November 2015
Jorge Lozano
CEO/President
Condortech Services, Inc.
jlozano@condortech.com



Condortech Services, Inc.



What would you do...

right now....

if your electronic security system (ESS)
was compromised?



Legacy Hardware vs Intelligent Hardware



64bit



8bit

- 30 year old Communication Protocols
- Embedded technology
- Wiegand Protocols
- Hard to Encrypt
- Meet Standards
- Slow Processing Speeds

- Fast Processing Speeds
- Smart Processors
- Memory Capacity
- Encryption Capabilities



1970s

1980s

2000s

2012

2050+

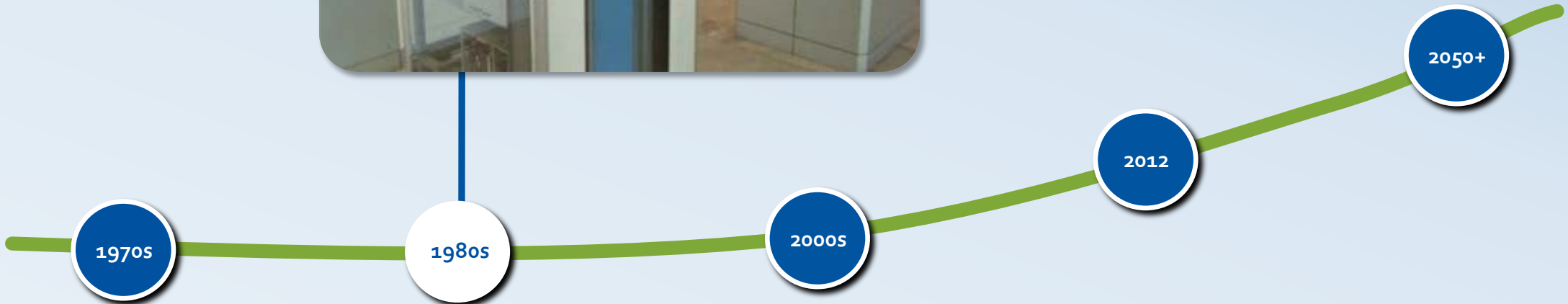
Plan Now and then Develop

Birth of the Security Industry

Access Control | Video Surveillance & Video Management | ID Management Systems | Intrusion Detection

Data Center: NASA Gemini, ~1960s
Reader: Flickr @IDenticardImages



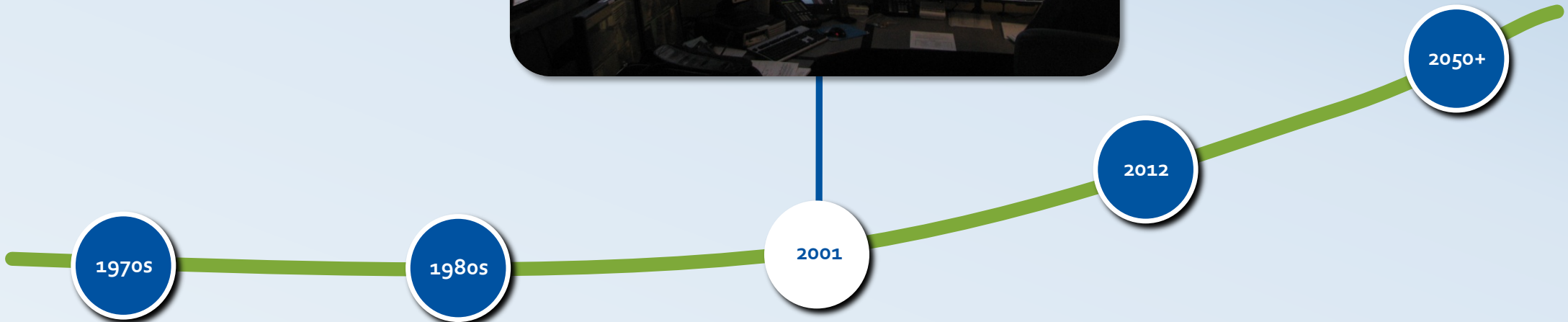


Plan Now and then Develop Improvements in the Security Systems

Access Control | Video Surveillance & Video Management | ID Management Systems | Intrusion Detection

IBM 729v: Wikipedia
Camera: Wikipedia



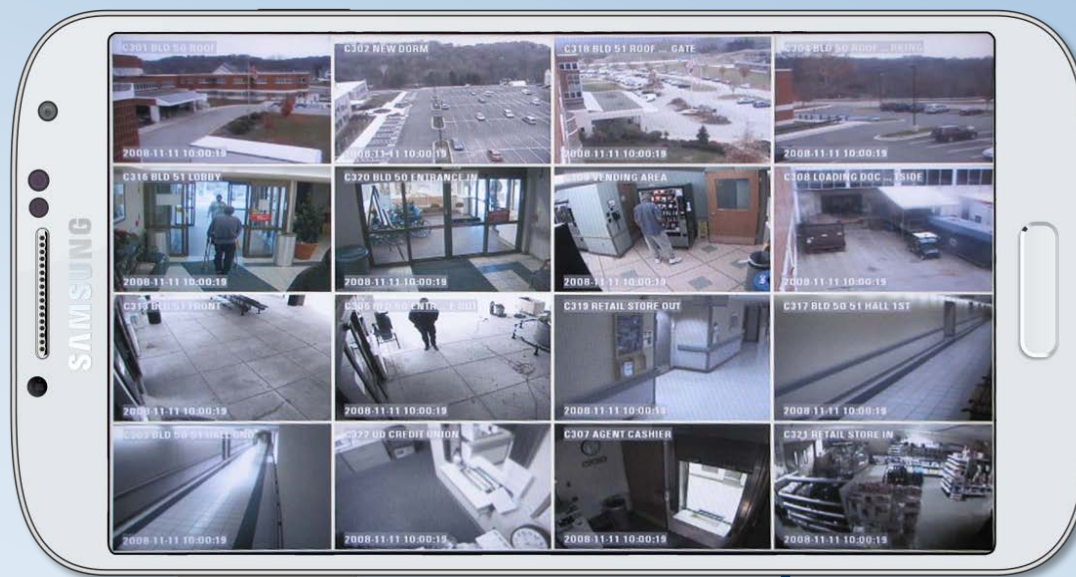


Plan Now and then Develop Exponential Demand for More Data

Access Control | Video Surveillance & Video Management | ID Management Systems | Intrusion Detection

Source: Condortech Services





1970s

1980s

2000s

2010

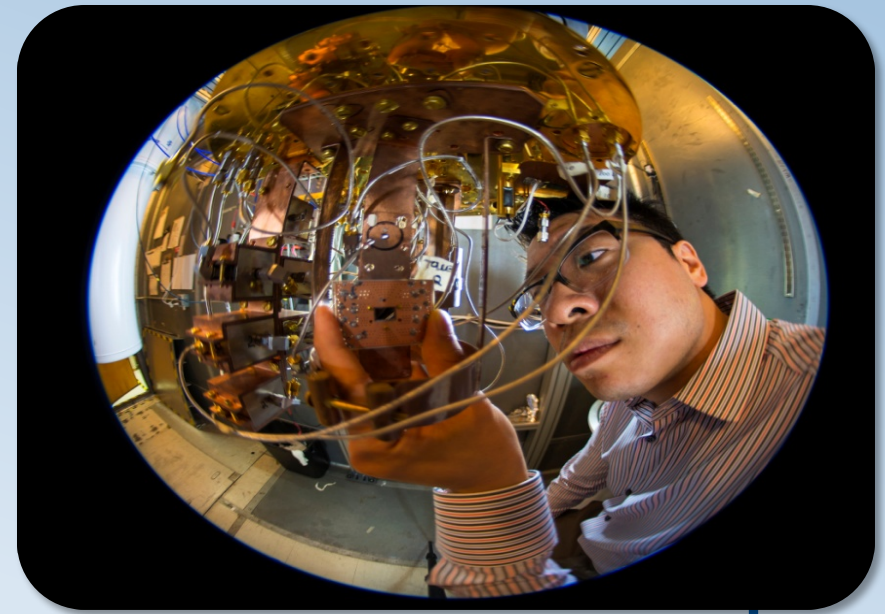
2050+

Plan Now and then Develop More Integration

Access Control | Video Surveillance & Video Management | ID Management Systems | Intrusion Detection

Source: Condortech Services





Plan Now and then Develop

Are You Planning for the Future?

Access Control | Video Surveillance & Video Management | ID Management Systems | Intrusion Detection



Source: Flickr @IBM Research

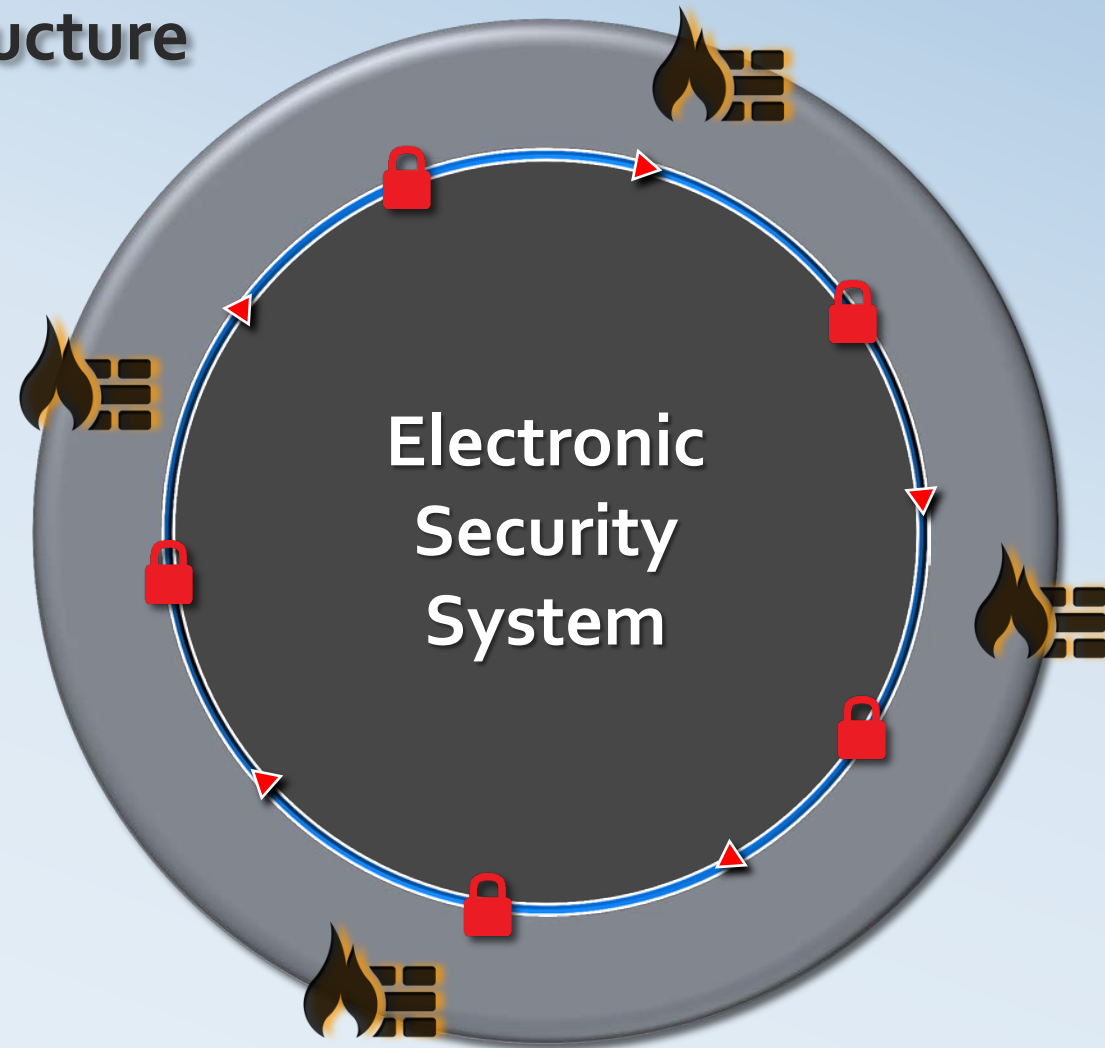
- ESS Systems more vulnerable in high traffic of data
- Black Hats, Darknet and others
- What can happen to your ESS System if it has a “Stuxnet” type Virus?
- What can happen if your PSIM is attacked?
- What can happen if your IP camera is compromised?
- What can happen if we insert a USB to your NVR or DVR?

Past, Present, and Your ESS Future

| TIMEFRAME | ACTIVITY |
|-----------|--|
| 0 – 6 m | <ul style="list-style-type: none"> ▪ Establish permanent security committee with <u>EVERYONE</u> represented ▪ Develop working strategic and COOP plans ▪ Inventory and Prioritize ▪ Firmware, OS updates, Patches, etc. |
| 6 – 12 m | <ul style="list-style-type: none"> ▪ Finalize strategic and COOP plans ▪ Implement priority items/controls ▪ Test for vulnerability ▪ White Hats |
| 12 – 18 m | <ul style="list-style-type: none"> ▪ Test newly implemented ESS Systems ▪ Continue to implement using Intelligent Hardware ▪ Remove sensors using embedded Technology |
| 18 + m | <ul style="list-style-type: none"> ▪ Iterate |

Create a New Culture of Collaboration

IT Infrastructure



CTS Cyber Threat Solutions

Seamlessly Integrating Hardware and Software

Access Control | Video Surveillance & Video Management | ID Management Systems | Intrusion Detection





Integrated Security Solutions

Re-Think What Security Means

Federal Facilities Council
Workshop
18 November 2015
Jorge Lozano
CEO/President
Condortech Services, Inc.
jlozano@condortech.com



Condortech Services, Inc.

