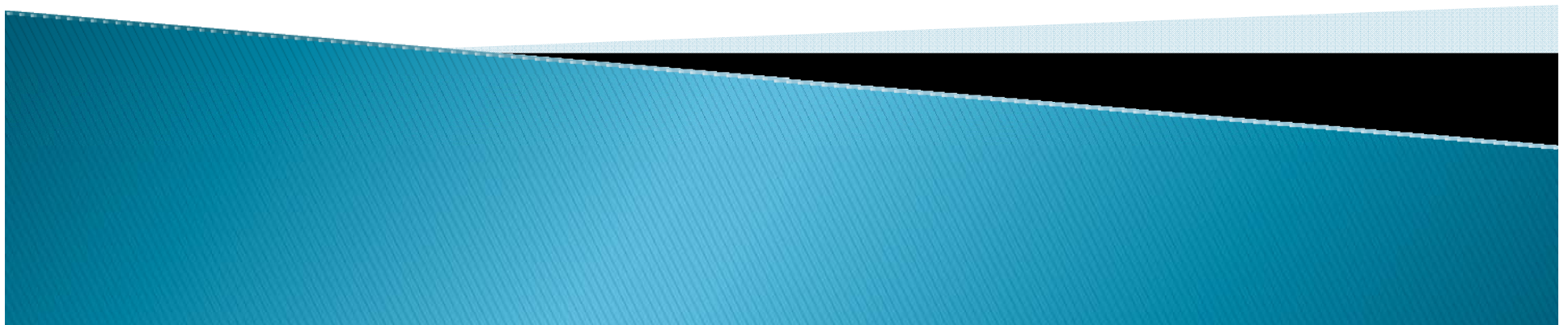




KECK GRADUATE INSTITUTE
of Applied Life Sciences

Leadership Careers in the Life Sciences

Sheldon Schuster – President, KGI
Beckman Center, National Academies, August 31, 2009



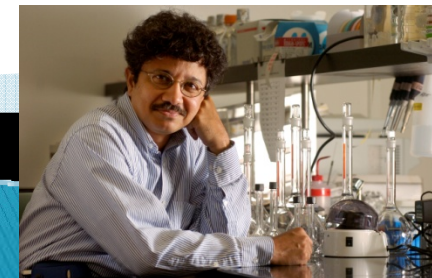
What kind of
hybrid
are
you?

Keck Graduate Institute: Hybrids of Science and Business

*KGI is the world's only graduate institution devoted to educating future leaders for the life sciences industry. **National Professional Masters Leader!***



KGI offers a unique
Masters of Bioscience
degree (MBS) and a ***PhD***
in Applied Life Sciences



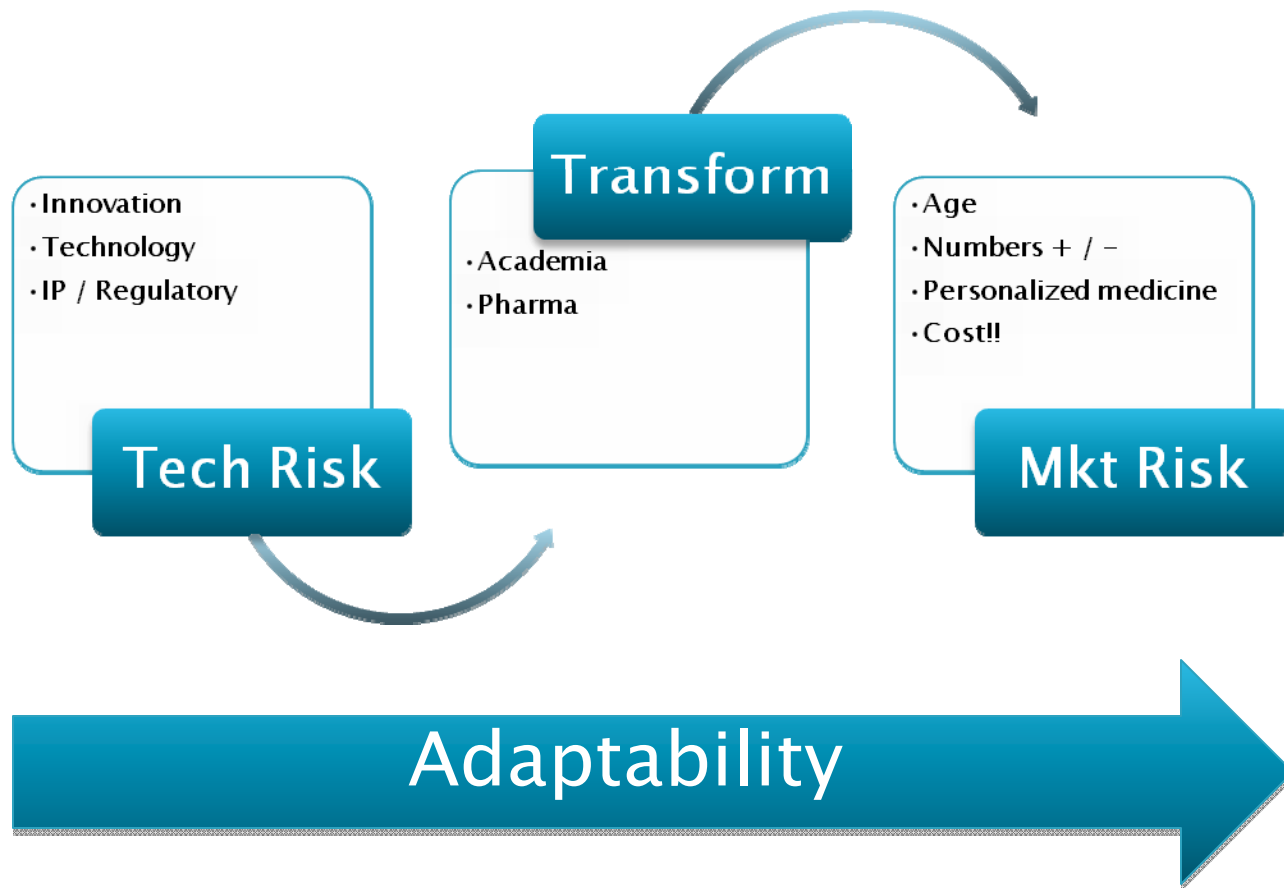
KGI is setting the standard for team-based, hands-on, real world education at the intersection of science and business.

The Life Sciences Industry



**Severe shortage of experienced managers
who know the science!**

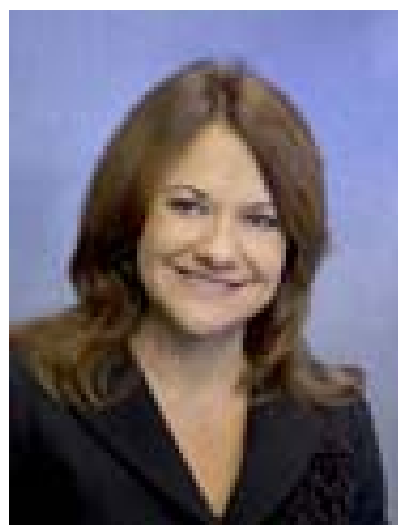
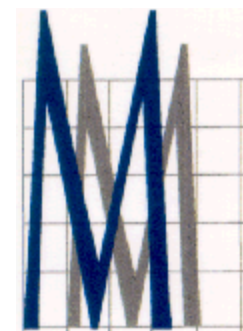
Industry Drivers



Success and Failure – New Definitions



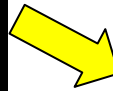
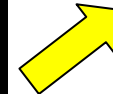
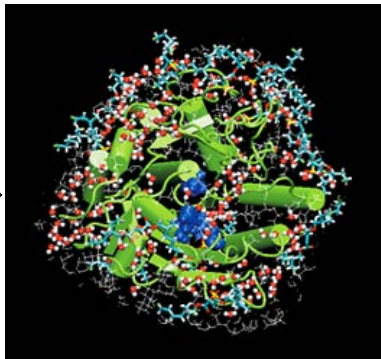
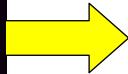
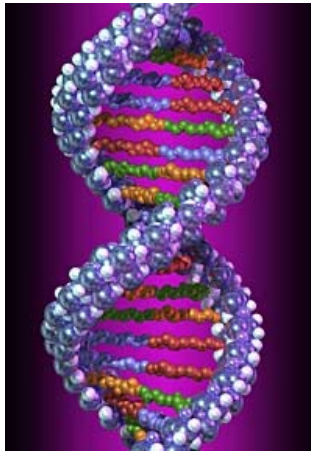
GENOPTIX®
MEDICAL LABORATORY



Tina S. Nova



Dominant Factors in Applied Life Sciences Industries



- {Discovery –8% of cost}
- Production
- Clin/Regulatory Affairs
- Intellectual Property
- Marketing



KECK GRADUATE INSTITUTE
of Applied Life Sciences

Industry Careers for PhDs who know management:

Project
Management

Clinical
Development

New Product
Development

Regulatory Affairs

Quality

Bioprocessing
&
Operations

Life Science
Information
Management

Business &
Corporate
Development

Strategic
Marketing

Corporate
Communications

Management
Consulting



KECK GRADUATE INSTITUTE
of Applied Life Sciences

What employers want:

Broad Scientific Knowledge

Quantitative reasoning

Ethical judgment Intercultural skills

Social responsibility Self-knowledge

Self-direction

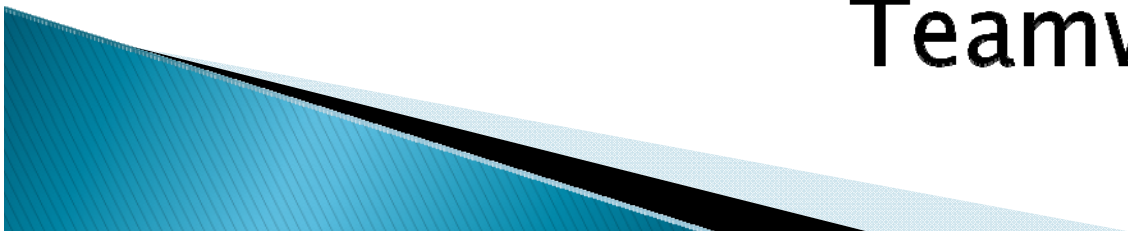
Global knowledge Writing

Critical thinking

Adaptability

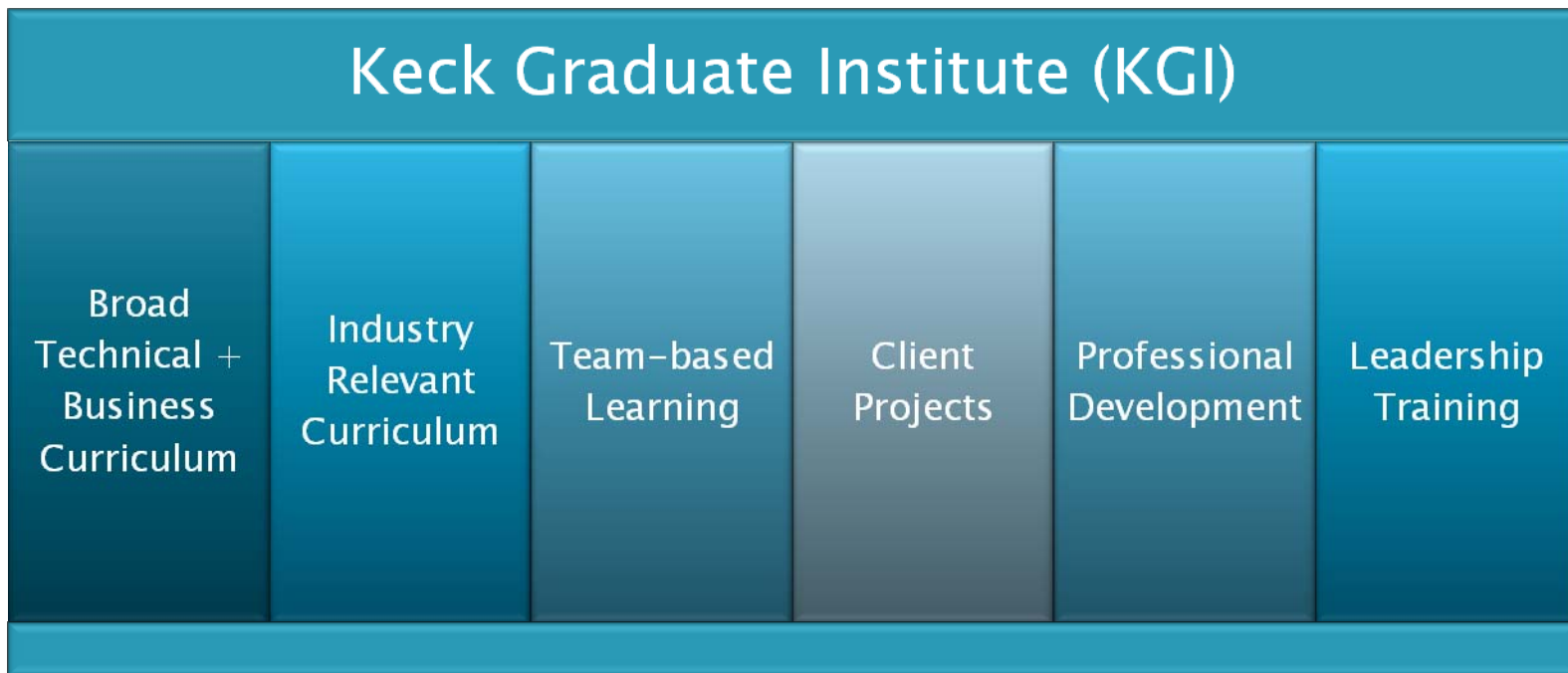
Oral communication

Teamwork



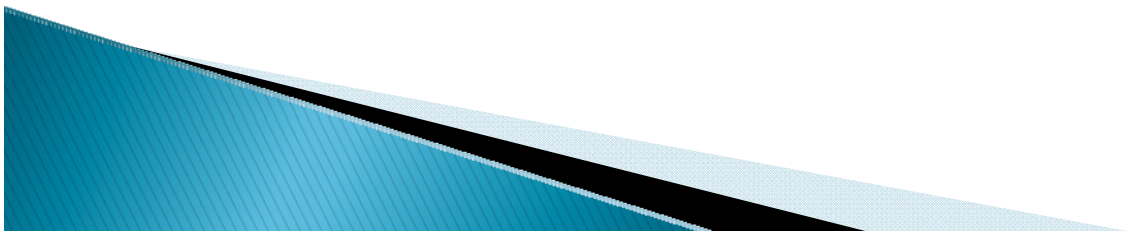
What is a Professional Program?

The Professional Science Masters (PSM)




Postdoctoral Professional Masters of Bioscience Management

- ▶ 89,000 postdocs in US (est)
- ▶ Academic job market worst in three decades
- ▶ 50% of pursue careers in industry
- ▶ Almost none have ANY business training

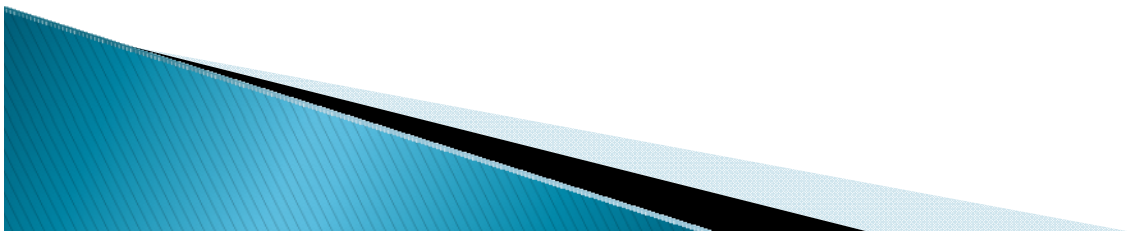


KGI: NEW DEGREE PROGRAM

- ▶ Postdoctoral Professional Masters in Bioscience Management (PPM)
 - ▶ Business/management/industry-specific focus
 - ▶ 9-month or 12-month options (w/paid internship)
 - ▶ TMP opportunities for tuition fellowships
 - ▶ Extensive co-curricular activities
- 

Sample courses

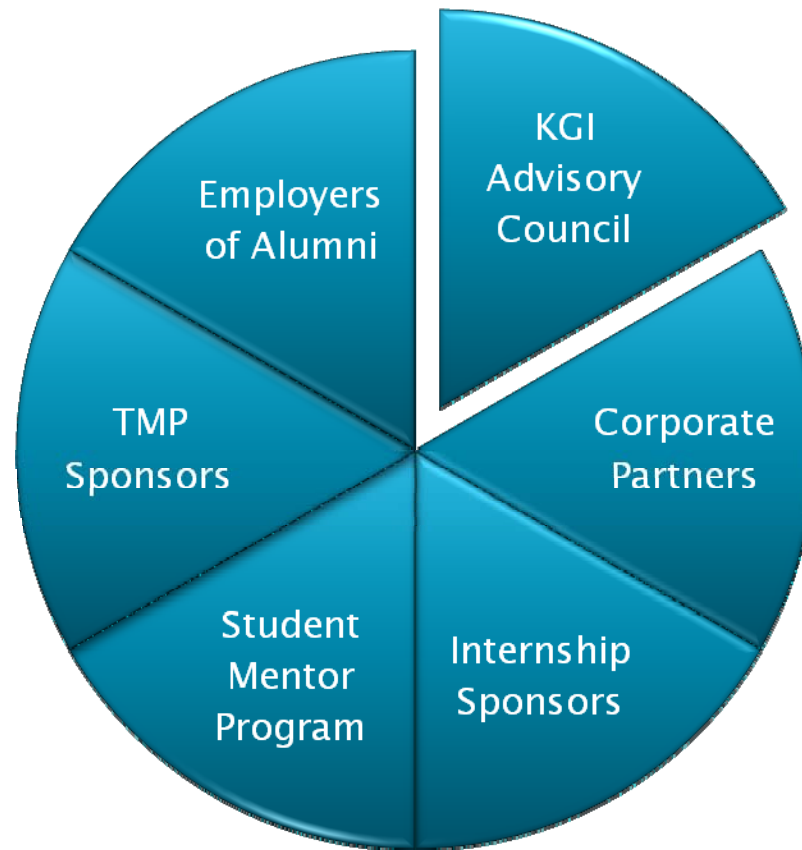
- Marketing Strategy and Assessment in the Life Sciences
- Accounting
- Corporate Finance
- Organizational Behavior
- Device & Biologics Regulatory Affairs
- Clinical Trials Design, Conduct & Strategy
- Bioscience Strategy
- Intellectual Property and Licensing
- Small Molecule Regulatory Affairs
- Bioscience Entrepreneurships



Design team

- ▶ **Dennis Fenton, Chair**
 - EVP, Amgen (ret)
 - ▶ **Bonnie Anderson**
 - CEO, Veracyte Inc.
 - ▶ **Judy Heyboer**
 - Sr. VP, Genentech (ret)
 - ▶ **Robert Curry**
 - CEO Sensys Med, Managing Partner ATV
 - ▶ **Sean Gallagher**
 - VP and CSO, UV Products Inc.
 - ▶ **John Baldeschwieler**
 - Professor, Caltech (ret), founder of Gilead Sciences
 - ▶ **Ken Pickar**
 - Visiting Professor, Caltech, VP Research GE (ret)
 - ▶ **Peter Barton Hutt**
 - Covington & Burling, former General Council FDA
- 

Networking and Industry Affiliations





KECK GRADUATE INSTITUTE
of Applied Life Sciences

Questions?

www.kgi.edu