






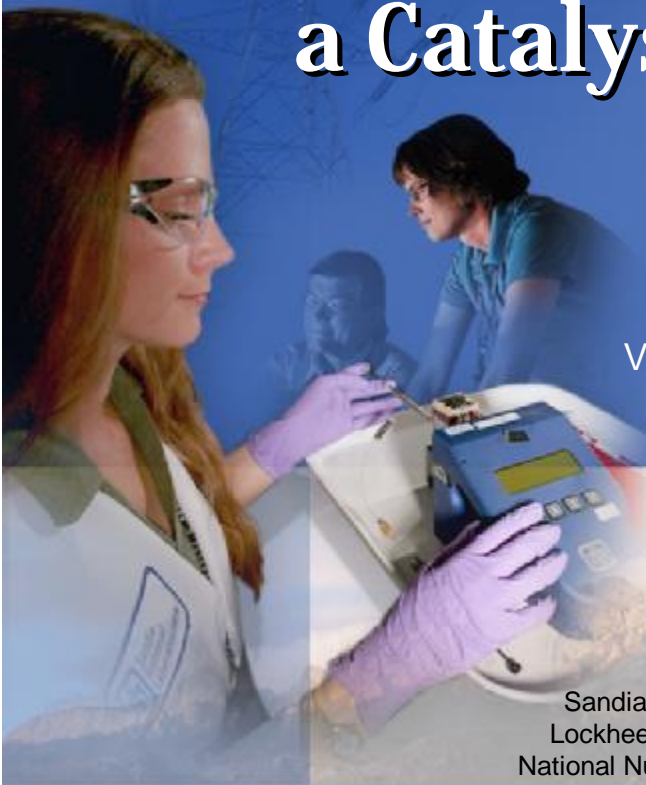
February 25, 2010
The National Academies
Clustering for 21st Century Prosperity



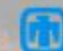
Sandia National Laboratories as a Catalyst for Regional Growth

J. Stephen Rottler

Chief Technology Officer and
Vice President of Science and Technology



Sandia is a multiprogram laboratory operated by Sandia Corporation, a Lockheed Martin Company, for the United States Department of Energy's National Nuclear Security Administration under contract DE-AC04-94AL85000.

 Sandia National Laboratories

National Security Mission Space

Nuclear Weapons

One Management Unit

- Nuclear Weapons



National Security Technologies & Systems

Three Management Units

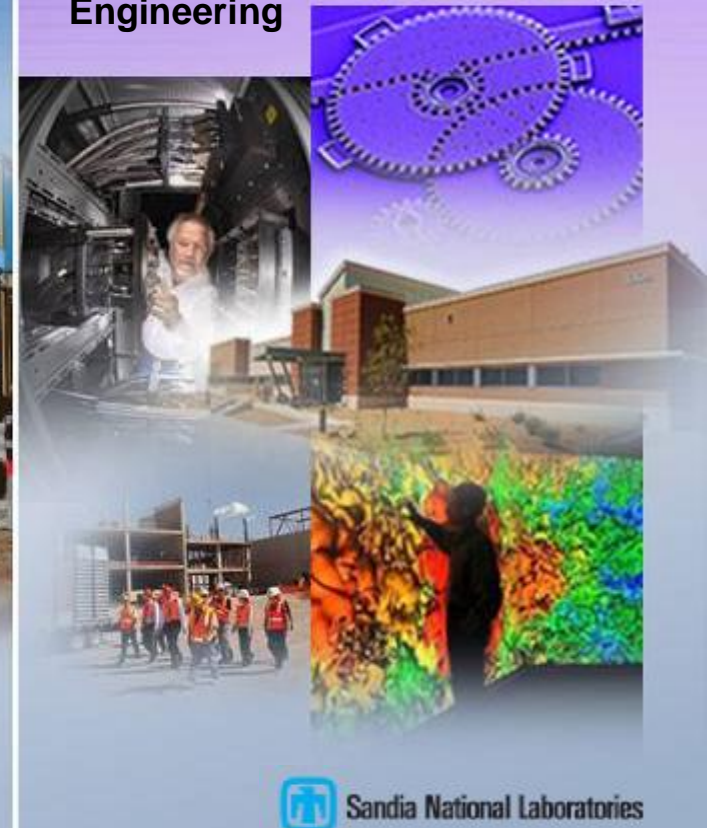
- Defense Systems and Assessments
- Energy, Resources, and Nonproliferation
- Homeland Security and Defense



Laboratory Transformation

Two Management Units

- Integrated Enabling Services
- Science, Technology, and Engineering



 Sandia National Laboratories

Research Foundations Drive the Capability Base

Strategic Capabilities



**High
Performance
Computing &
Simulation**

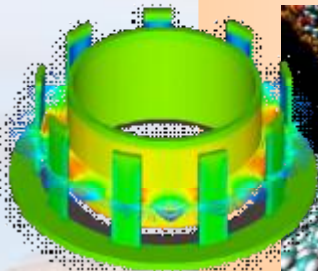


**Nanotechnologies and
Microsystems**

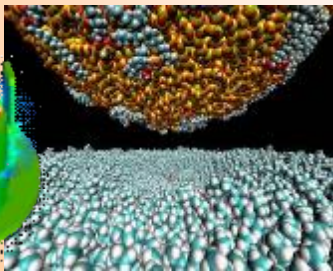


**Extreme
Environments**

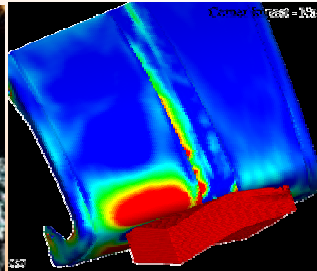
**Computer
Science**



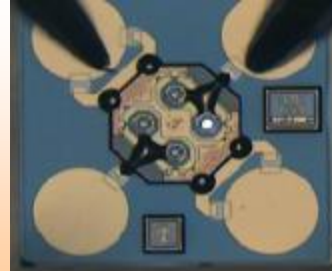
Materials



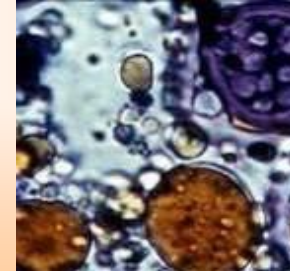
**Engineering
Sciences**



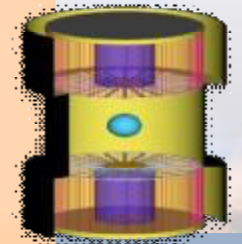
**Micro
Systems**



Bioscience

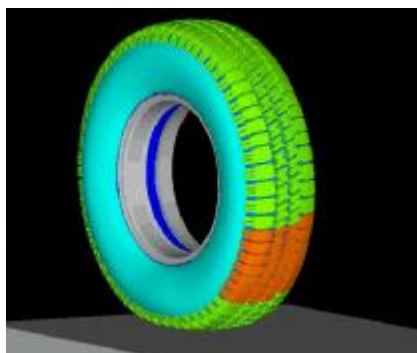


**Pulsed
Power**

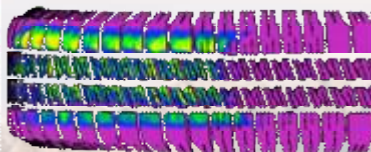
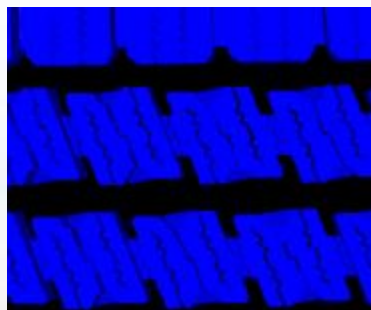


Research Foundations

Industrial Partnerships Provide Strong Value to Sandia and its Partners



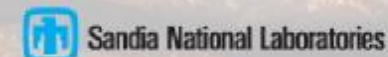
Assurance™
Featuring
TripleTred™
Technology



CORNING

ExxonMobil

Taking on the World's Toughest Energy Challenges.™





Mechanisms That Sandia Uses to Impact the Regional Economy



**SANDIA SCIENCE &
TECHNOLOGY PARK**



NMSBA

Los Alamos National Laboratory
Sandia National Laboratories

*Entrepreneurial Separation
to Transfer Technology*

LVOC/i-GATE



Sandia National Laboratories

Sandia Science & Technology Park - NM



- n **Public/Private Partnership**
- n **30 tenants**
- n **Average annual salary is twice Albuquerque average**

Currently: 1,942 Jobs

Ten Year Projection: 6,000 Jobs

Technology Clustering Around Sandia - NM

CINT



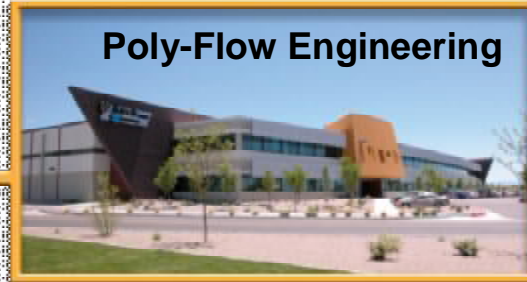
ATA



Ktech



Poly-Flow Engineering



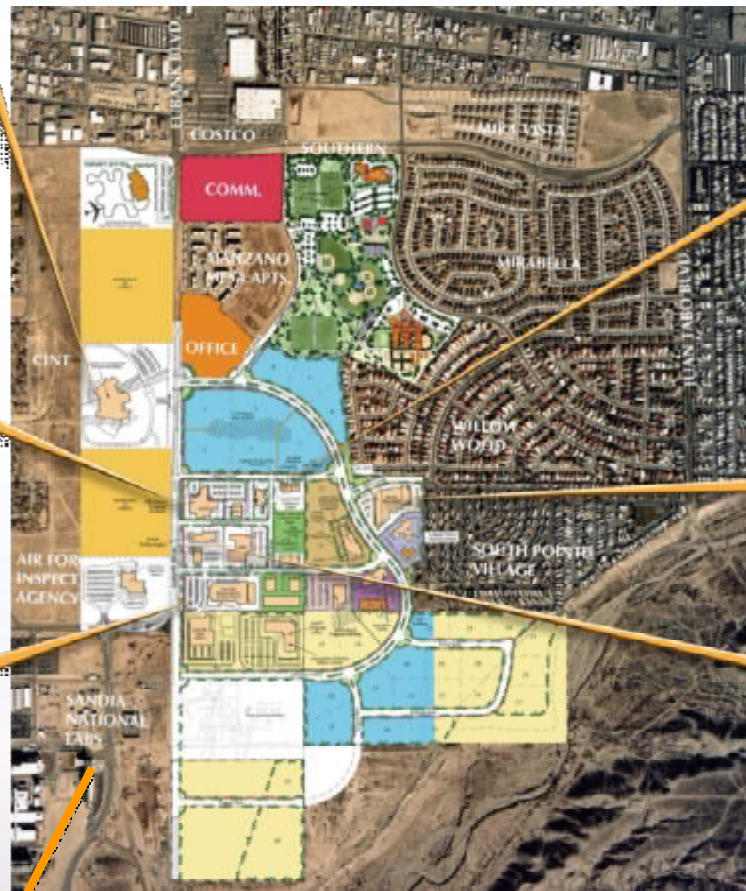
EMCORE



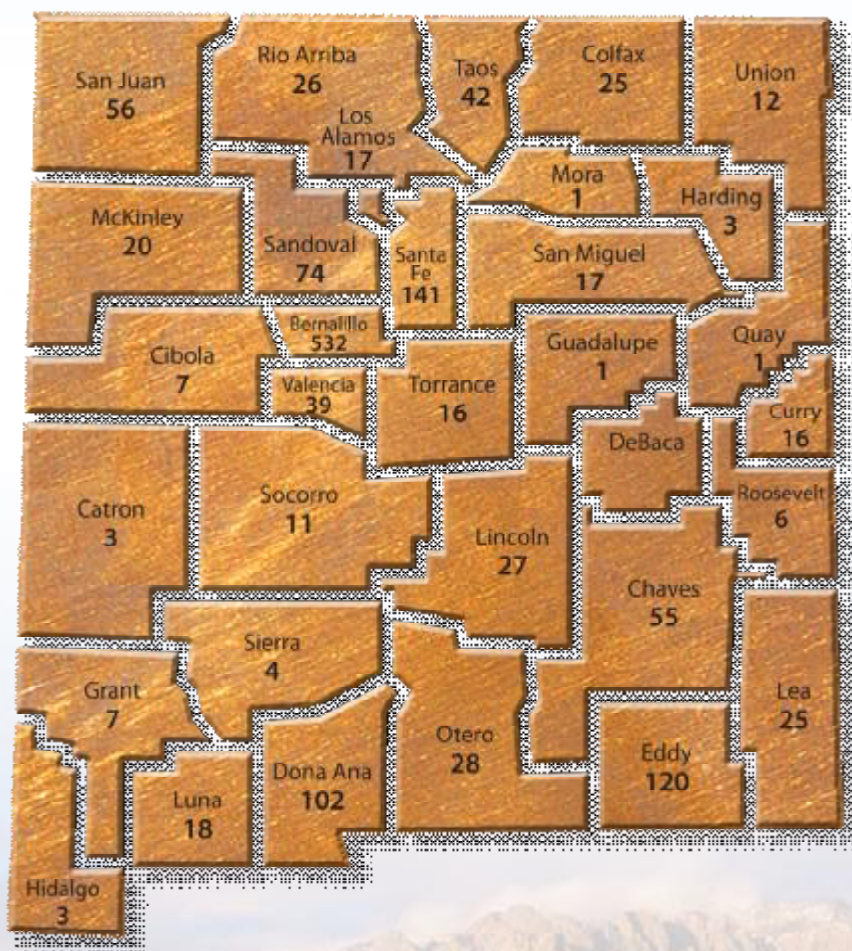
TEAM Technologies



Sandia National Labs



New Mexico Small Business Assistance Program



§ **\$2.4M State tax credit**

§ **Projects in every NM County**

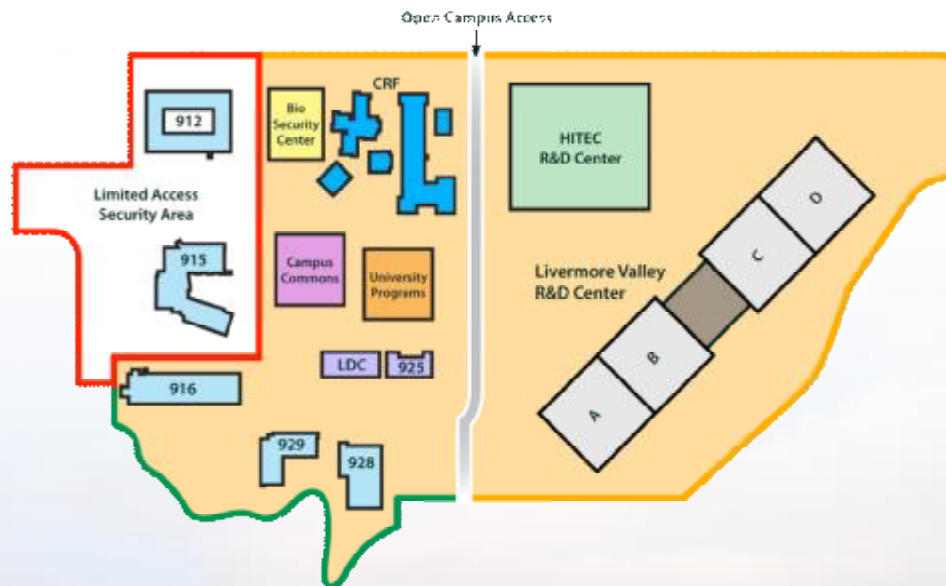
§ **Return on investment to the State is \$1.34 for each dollar invested**

§ **1020 small business jobs created/retained**

Livermore Valley Open Campus and i-Gate - CA

§ Livermore Valley Open Campus

§ i-Gate – Innovation for Green Advanced Transportation Excellence



§ Core of an Energy Research Cluster

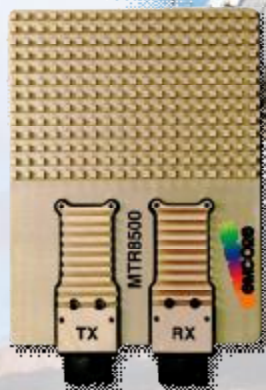
§ Public/Private Partnership with City of Livermore, LLNL, and others

Entrepreneurial Separation to Transfer Technology (ESTT)



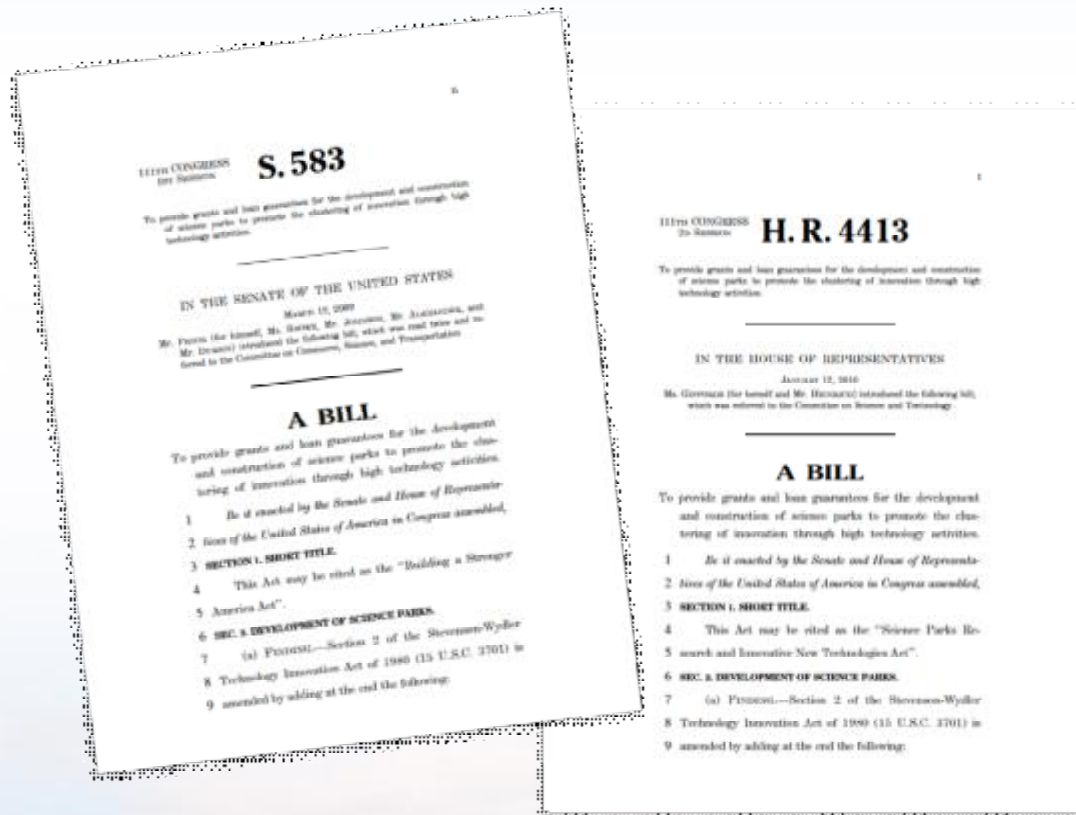
- § 138 scientist and engineers have left Sandia through ESTT since 1994 in both NM and CA
- § 91 companies started up or expanded since 1994
- § More than 300 jobs created in past 5 years

EMCORE Success Story



- § Sandian formed MODE in 1996 through the **ESTT** program
- § EMCORE purchased MODE
- § Licensed several technologies from Sandia
- § Located in the **SS&TP** and expanded several times (350 employees today)
- § Moved company headquarters to **SS&TP**
- § Received technical assistance through **NMSBA**

How We Can Build On Our Success



§ National Science Park Legislation

§ National Incentives for Lab/Industry Partnerships