

# Purdue MEP Model



David R. McKinnis, Director  
Technical Assistance Program

# Purdue Model: Comprehensive Support of Manufacturing



Graduates



Assistance Programs



Lifelong Learning



Research



# Purdue Office of Engagement

## Purdue Technical Assistance Program

Purdue MEP Center

MEP Services

Energy Efficiency

Faculty Assistance



## MEP Quick Facts FY 10-11

### Funding and activity

- \$3,800,000 in funding from 85 sources
- Served 500 employers
- 3,239 employees trained
- 40 faculty, staff, student participants

### Impacts

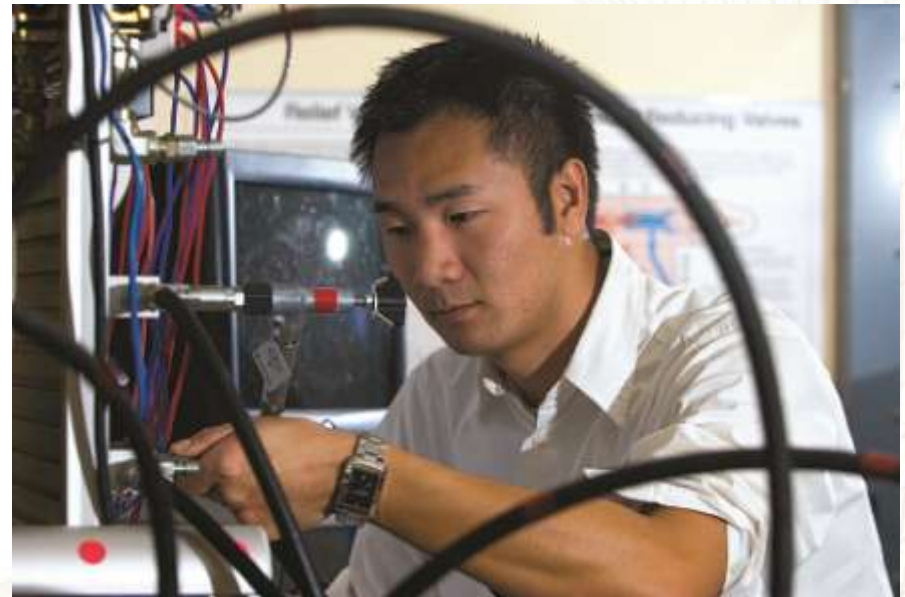
- Jobs added/saved 2,464
- Increased/retained sales \$177.5 M
- Cost savings \$16.5 M
- Capital investments \$47.3 M



# Programming

## Over 100 Services

- Continuous Improvement
- Sustainability
- Supplier Development
- Technology Acceleration
- Workforce
- Innovation
- Consulting assistance





## State and Federal Partnerships

- Indiana Economic Development Corporation (NIST MEP funds)
- State of Indiana (funds for business assistance)
- Indiana Department of Workforce Development (US DOL funds)
- Indiana Department of Energy Development (US DOE funds)

## Business partners

- Advisory councils
- Customers

## Purdue MEP Future

### Focus

- Continued focus on needs and opportunities
- Providing exactly what is needed for the short and long term horizons, not canned programs

### Resources

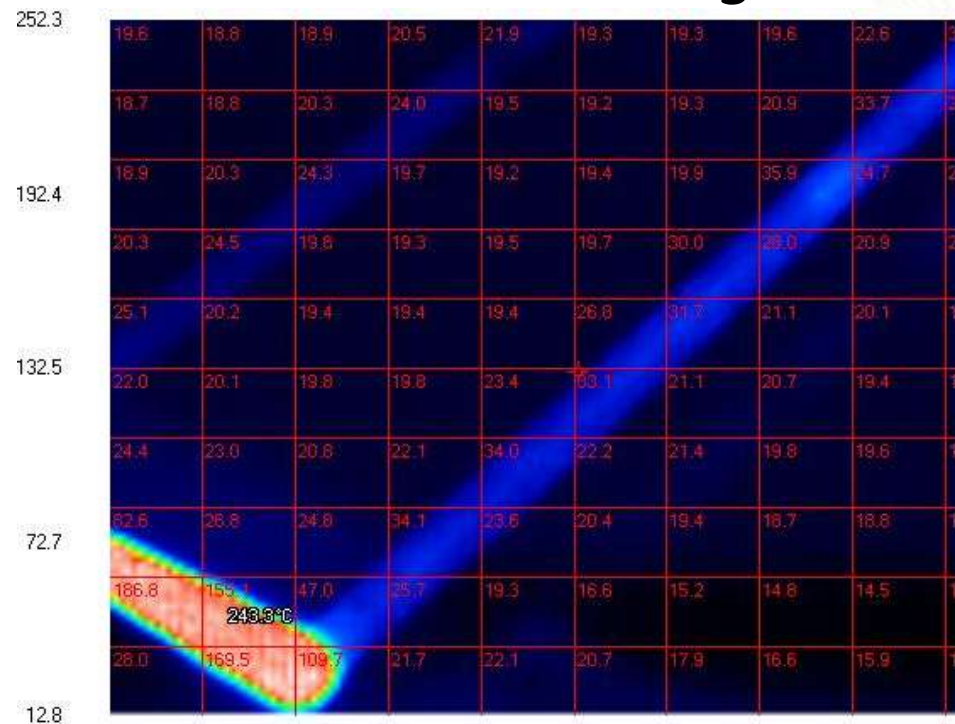
- More Partnerships: federal, state, universities, companies
- Fully integrated with Purdue's colleges of engineering, technology, science, management, etc.

### Expanded Services

- Lifelong learning for the creative class, much provided on-line
- Innovation embedded in all programs

# Faculty Assistance Project Example

## Laser Welding



**Figure 7.** – Thermal image of laser leading edge during welding process. Maximum temperature achieved 252.3°C. Emissivity value ( $\epsilon$ ) of stainless steel used was 0.63



# GreenED



**GREEN GENERALIST** – 8 instructional hours

**LEVEL 1**

**GREEN SPECIALIST** – Up to 48 instructional hours

6 modules: Sustainability in Practice, Dumpster Dive, Energy Management, H<sub>2</sub>O Conserve, Pollution Solutions, Green Chemistry

**LEVEL 2**

**SME GREEN SPECIALIST CERTIFICATE** – Earned by passing exam

**LEVEL 3**



## Advanced Modeling & Simulation

### Jeco Plastic Products



National Digital Engineering and Manufacturing Consortium  
(NDEMC)

# Purdue MEP Model



David R. McKinnis, Director  
Technical Assistance Program