



Floodplains by Design:
catalyzing floodplain management for
people and nature.

Kris Johnson, PhD
The Nature Conservancy

National Academies Roundtable on Science and Technology for Sustainability
December 11, 2014



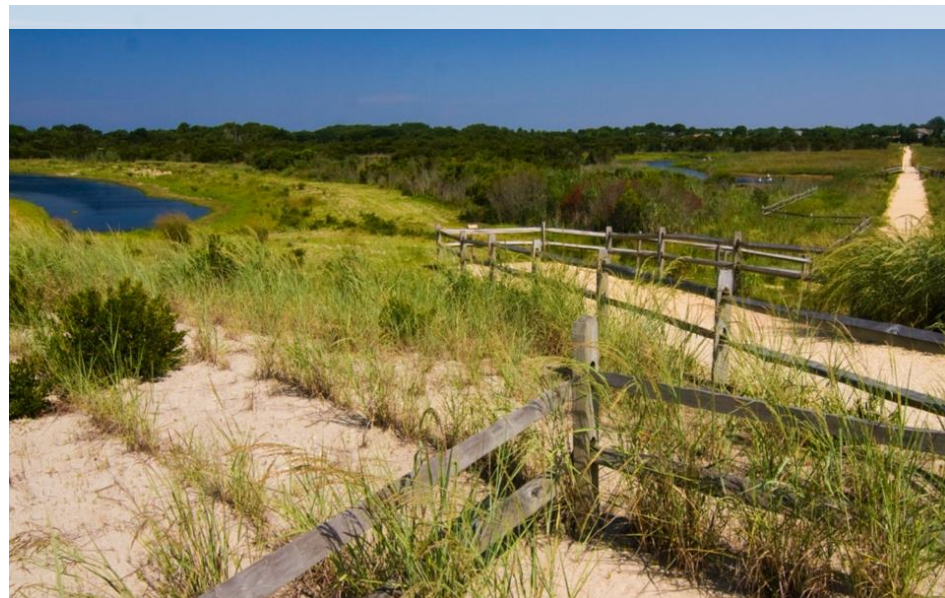


Risk Reduction & Resilience





Natural infrastructure

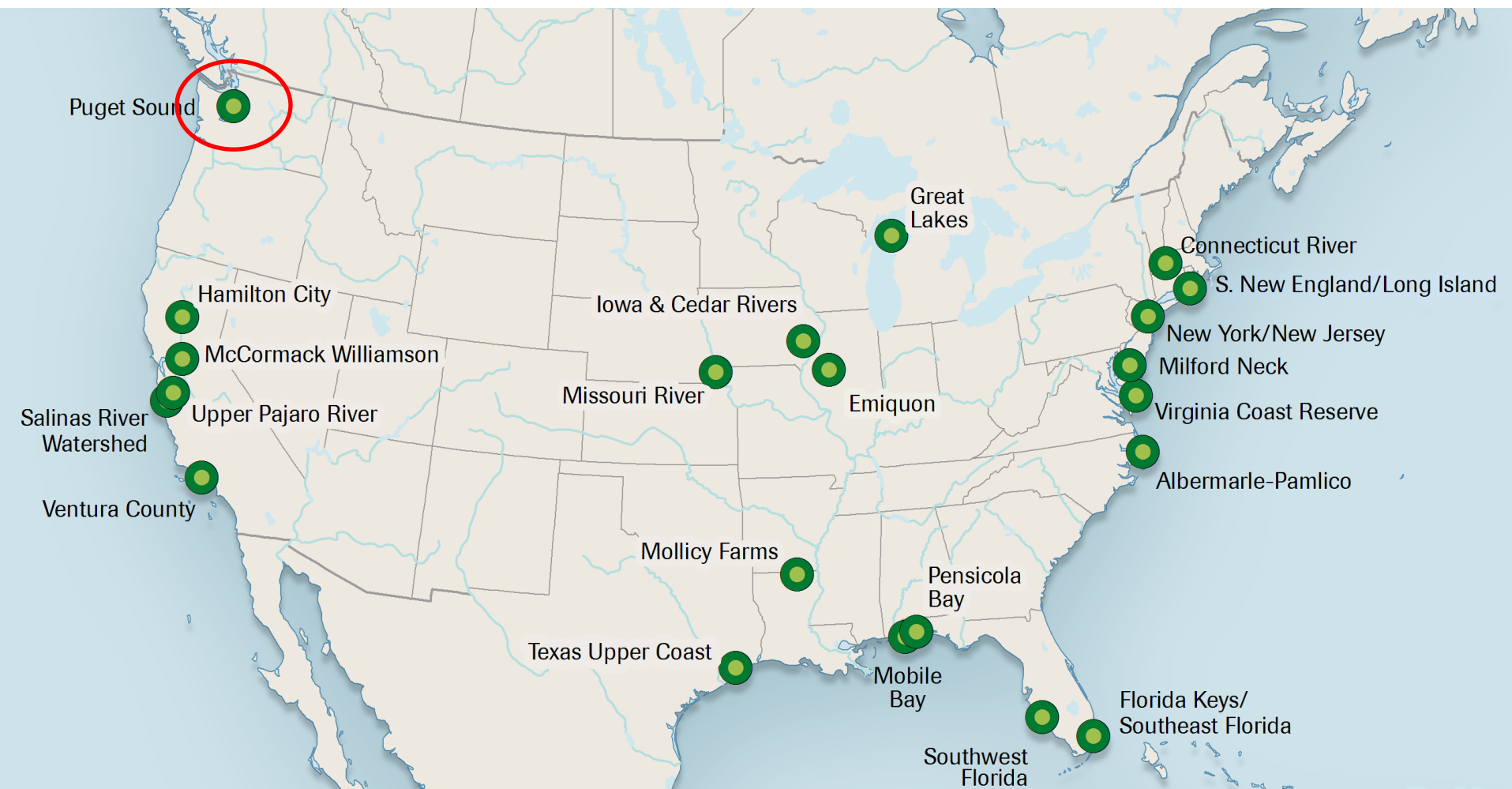


“...the local people, they don't really want to see a whole lot of fake stuff around. They have all grown up with water lapping in their yards, you know. A natural solution is going to be a better choice...”



Sheila Reddy, 2014

Demonstration Sites







December 17, 2012

Kevin Morse



Floodplains by Design

- *Reduce flood risks* to farms, communities, and businesses
- Dramatically *accelerate salmon habitat recovery*
- *Support agriculture, recreation, clean water,* and other floodplain uses and services

PROJECT ADVISORY TEAM

Federal Emergency Management Agency

King County

Master Builders

National Oceanic and Atmospheric Administration

Pierce County

Skokomish Tribe

Snohomish County

Snohomish County Sustainable Lands Strategy

Tulalip Tribes

United States Army Corps of Engineers

United States Environmental Protection Agency

United States Geological Survey

Washington Military Department Emergency
Management Division

Washington State Dairy Federation

Washington Department of Fish and Wildlife

PROJECT PROPONENTS

City of Orting

City of Stanwood

Clallam Conservation District

Jamestown S'klallam Tribe

King County

Mason County Conservation District

North Olympic Lead Entity for Salmon

Pierce County

Skokomish Tribe

Snohomish Conservation District

Snohomish County Dike District 7

Snohomish County Surface Water
Management

Stillaguamish Tribe

Washington Department of Fish and Wildlife

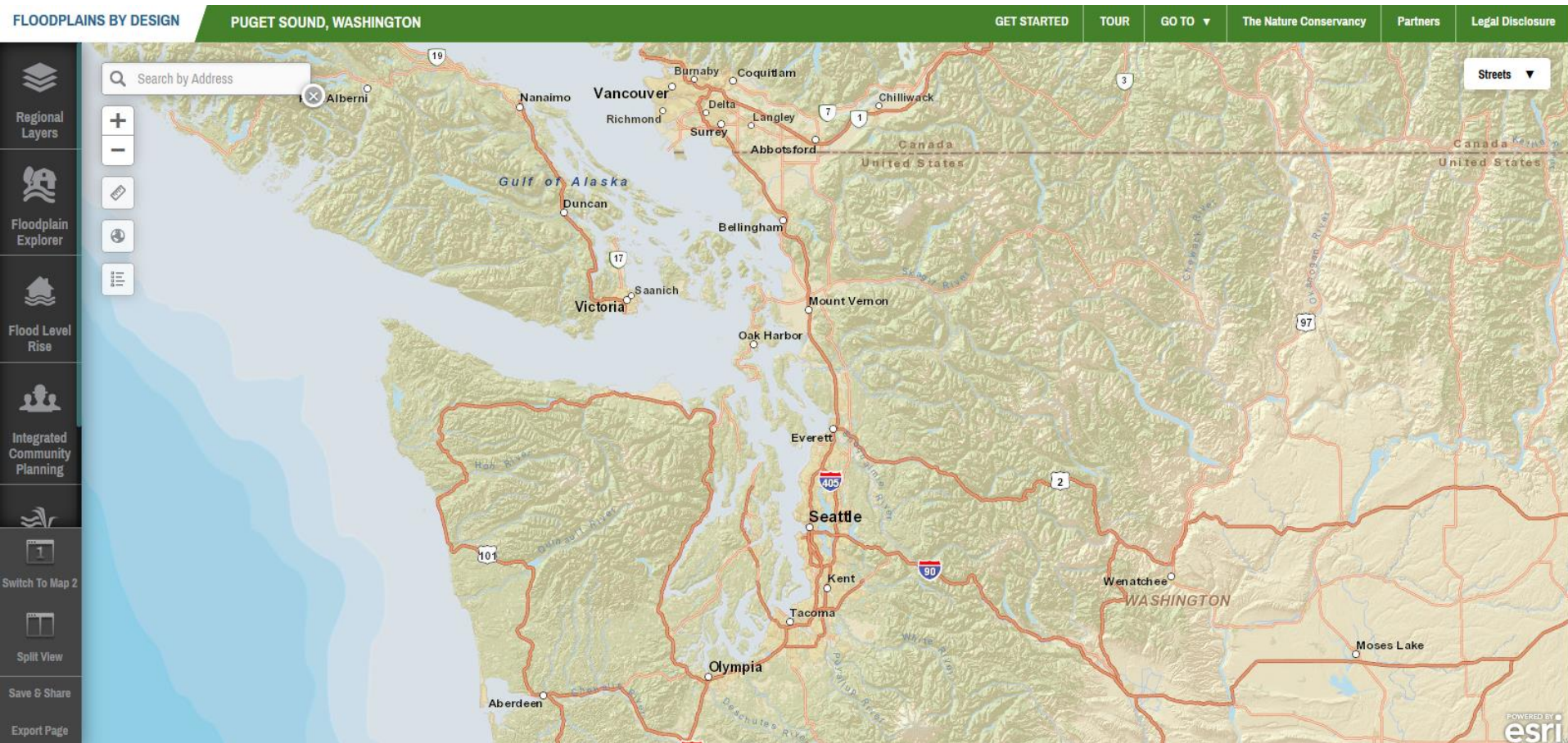
Whatcom County Flood Control Zone
District



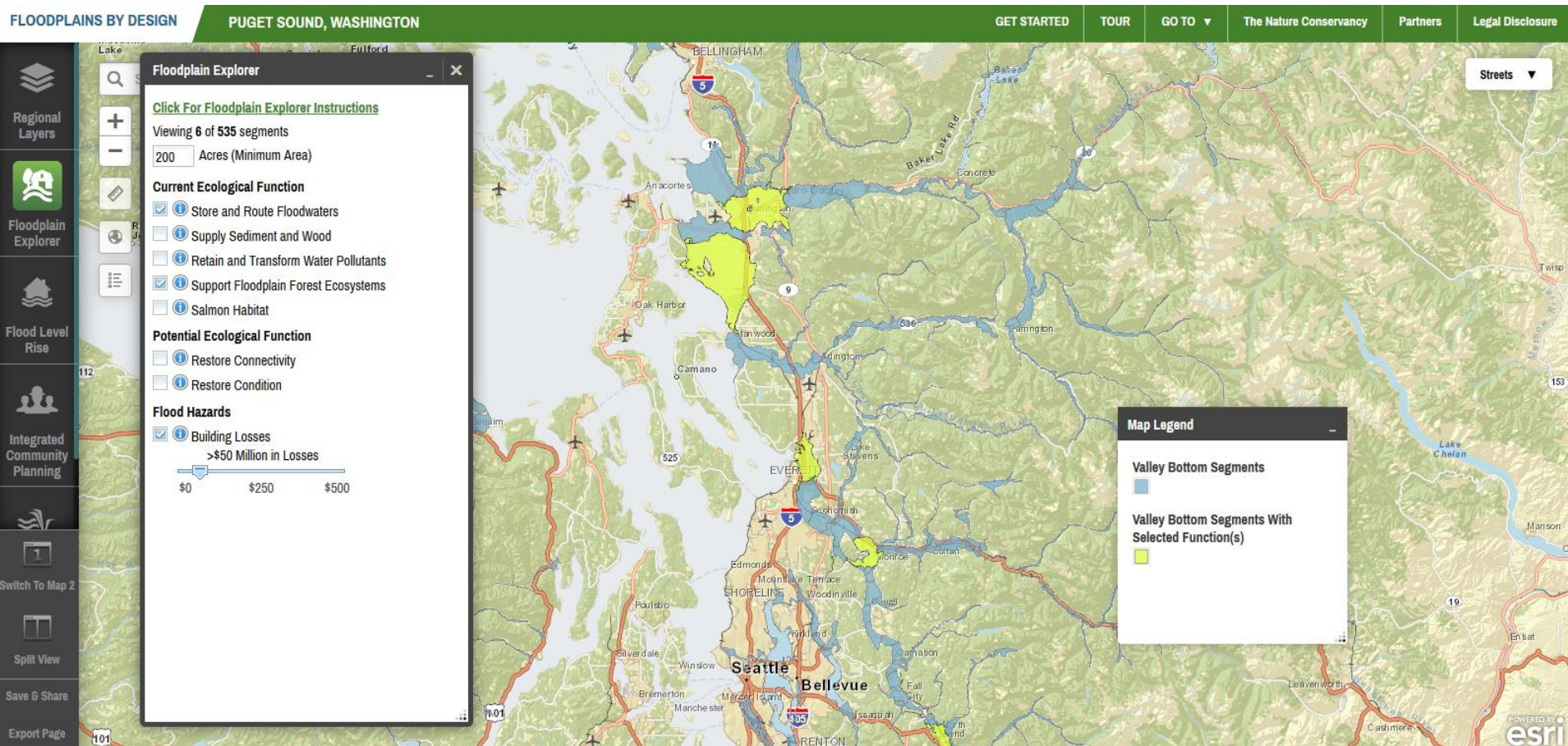
Creating Systemic Change

- Align agency programs and *coordinate investment*
- Grow the *funding for multi-objective management*
- Catalyze integrated *local decision-making*
- Science and *decision support* for planning and prioritization

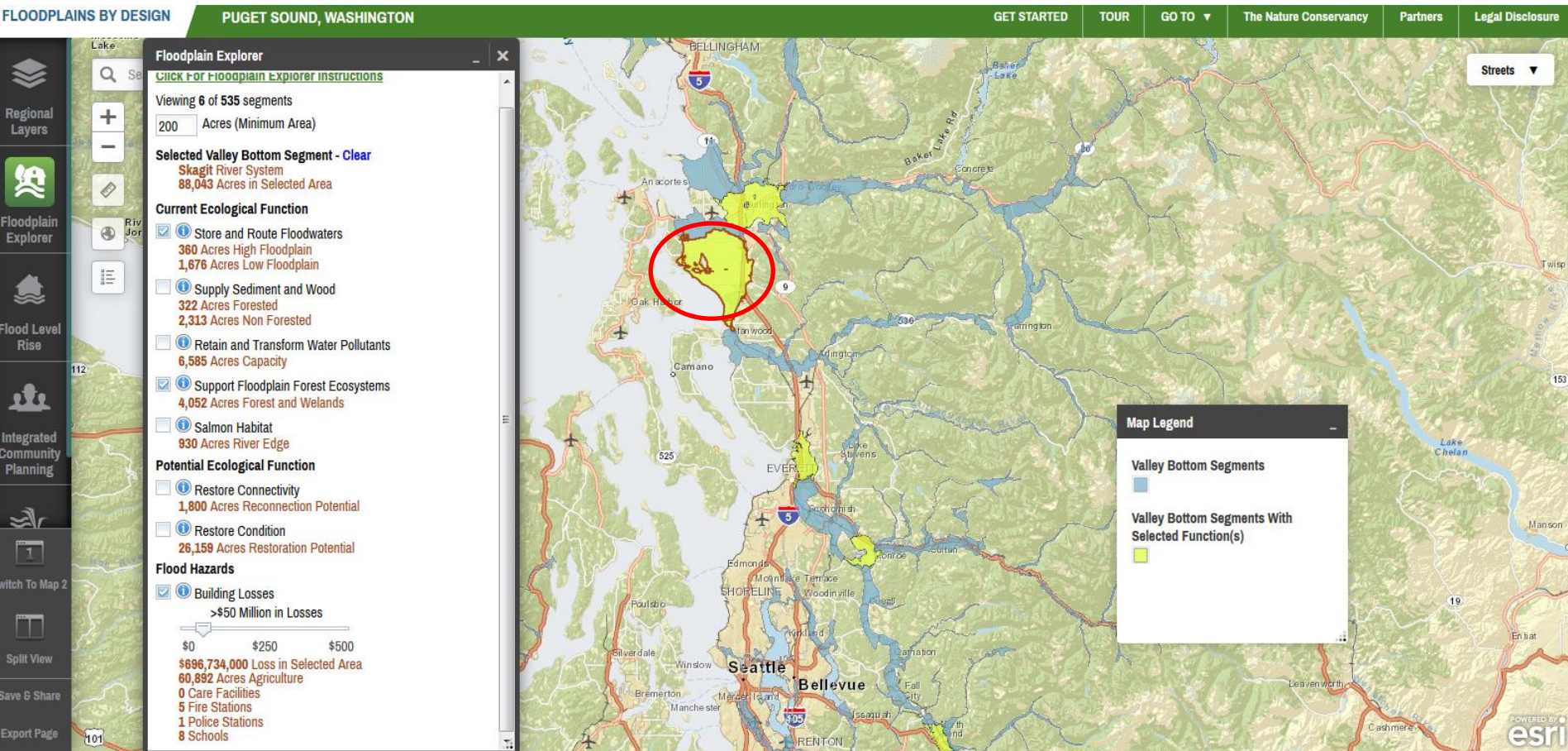
Decision Support Tool



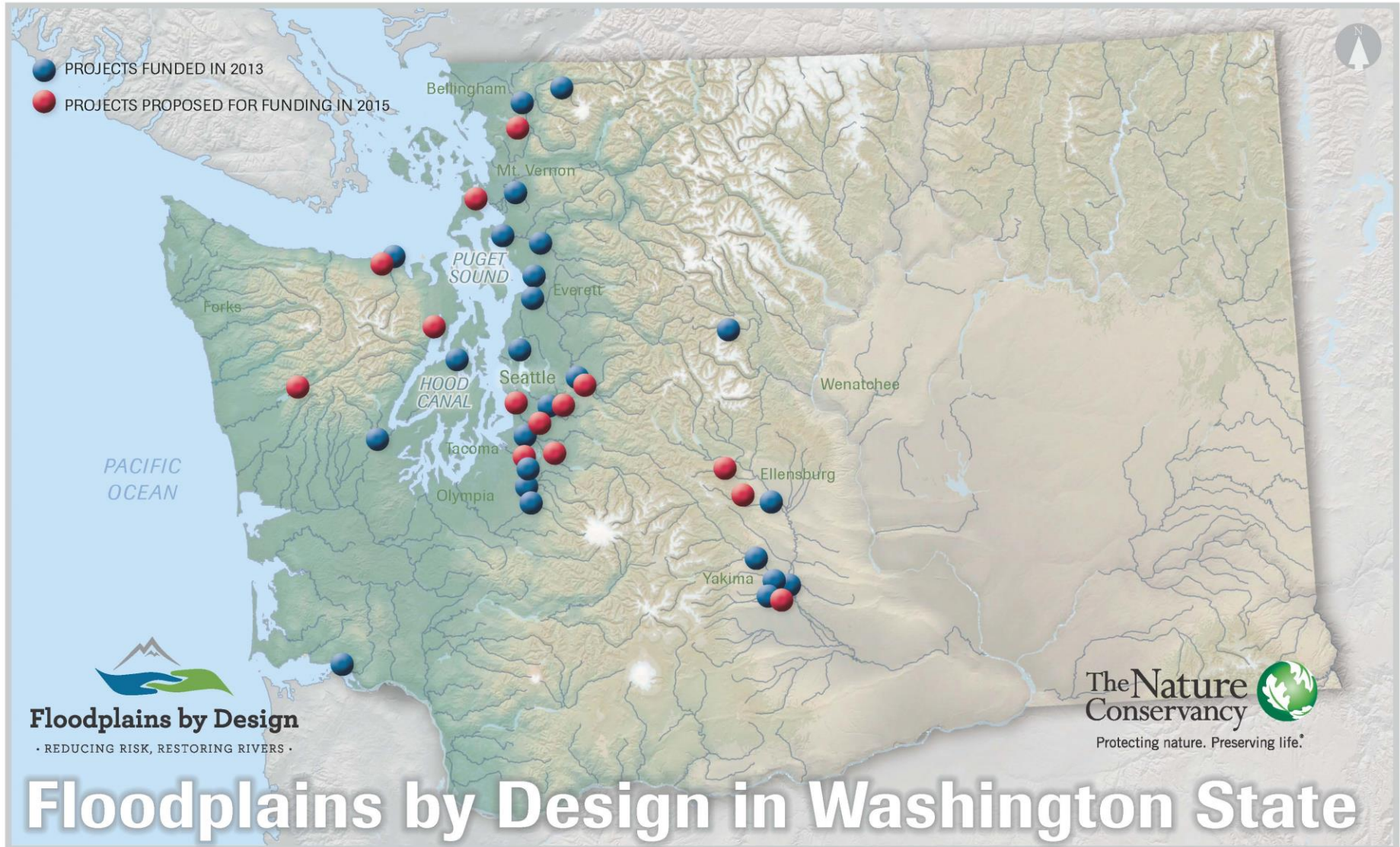
Decision Support for Coordinated Investment



Decision Support for Coordinated Investment



Decision Support for Coordinated Investment



The Floodplains by Design partnership is harnessing the collective strength of agencies, nonprofits and local communities to restore salmon populations, reduce flood hazards, increase agricultural viability, improve water quality and enhance outdoor recreation.

DECEMBER 3, 2014
Map: The Nature Conservancy,
Erica Simek Sloniker

Decision Support for Local Planning

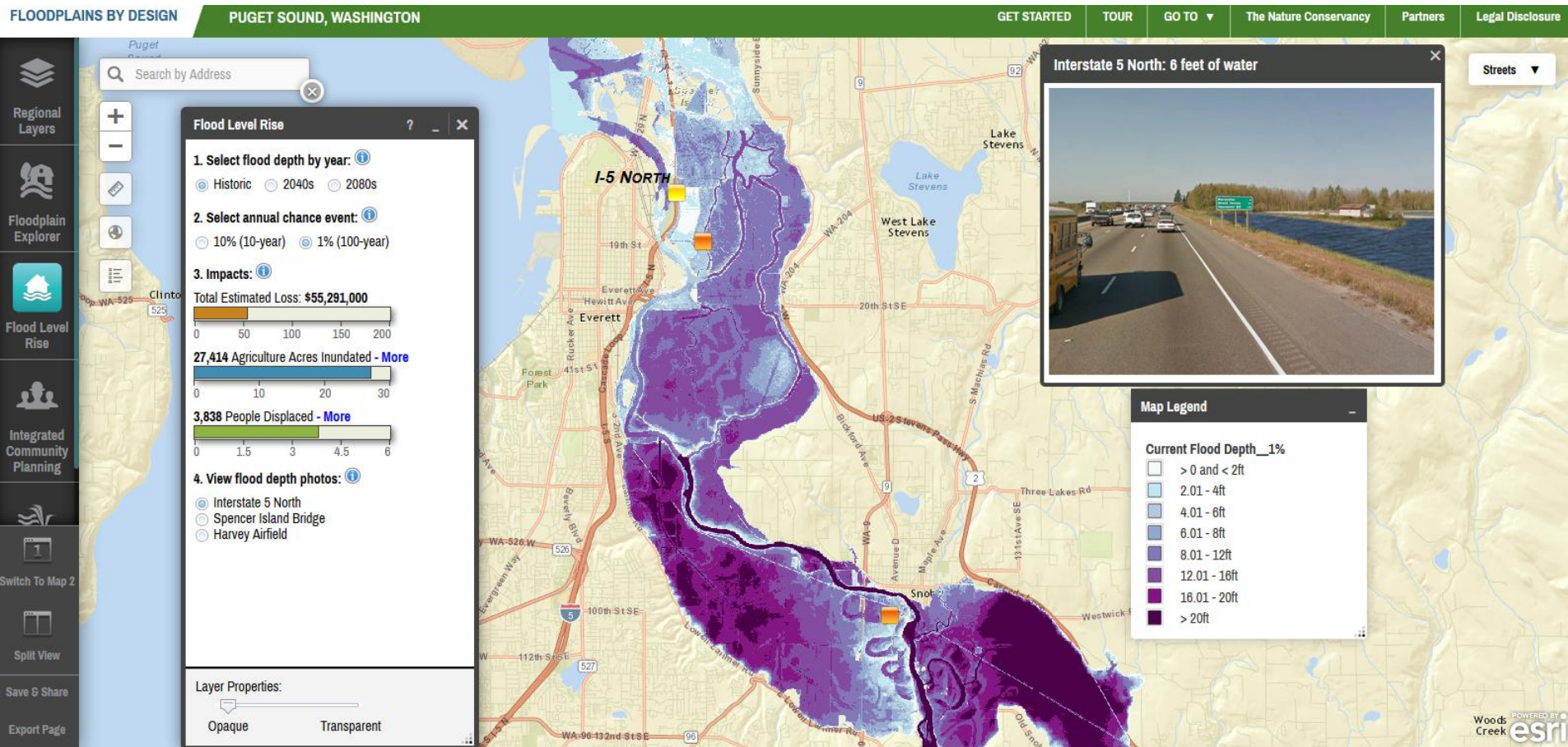


Sustainable Lands Strategy: “Net gain for farms and fish”

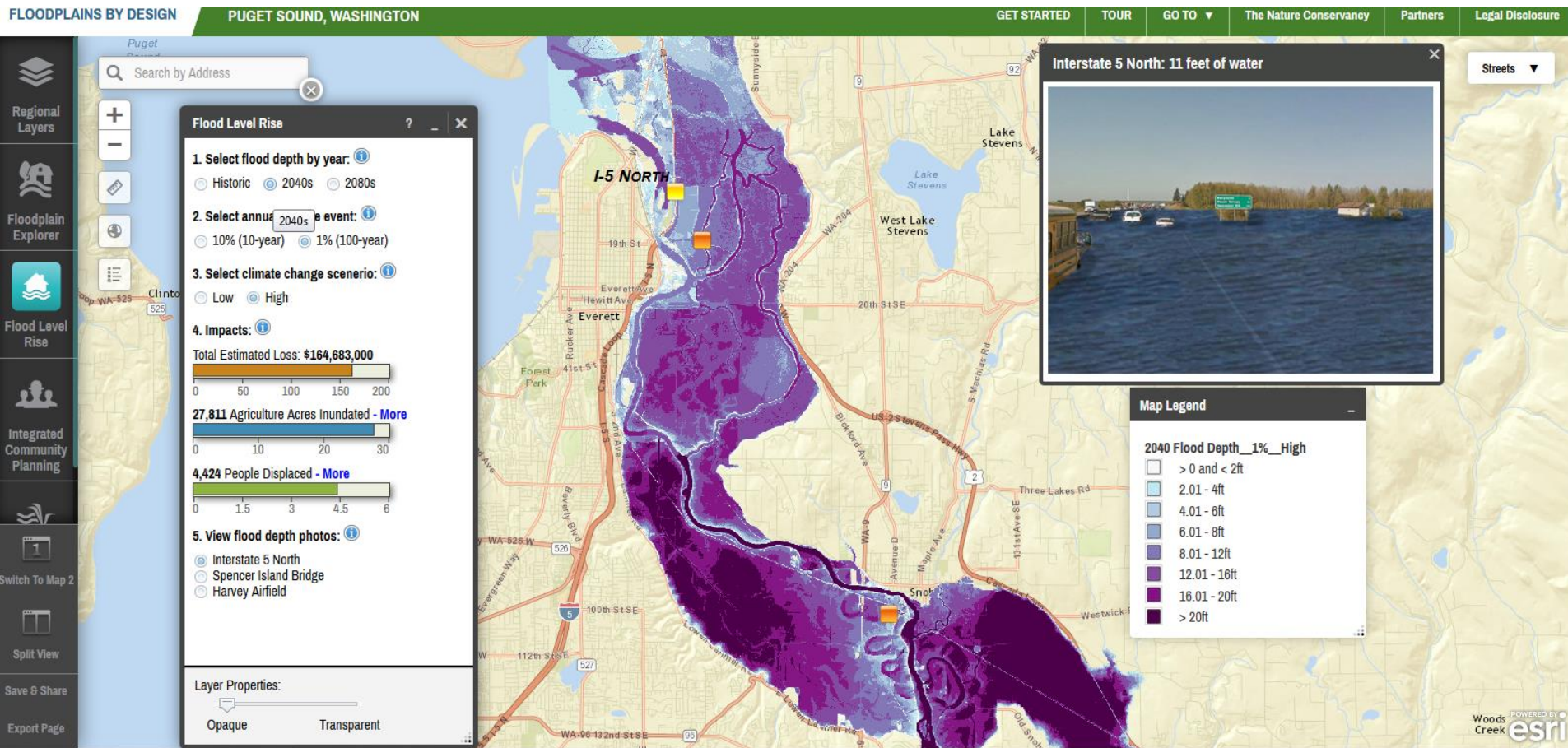
SLS Executive Committee:

- *Stillaguamish & Tulalip Tribes*
- *Snohomish Conservation District*
- *State: PSP, DOE, WDFW, Conservation Com.*
- *Feds: NOAA, USDA/NRCS*
- *Snohomish County*
- *Agriculture Advisory Board*
- *Futurewise, Pilchuk Audubon, TNC and other Environmental NGO's*

Decision Support for Local Planning



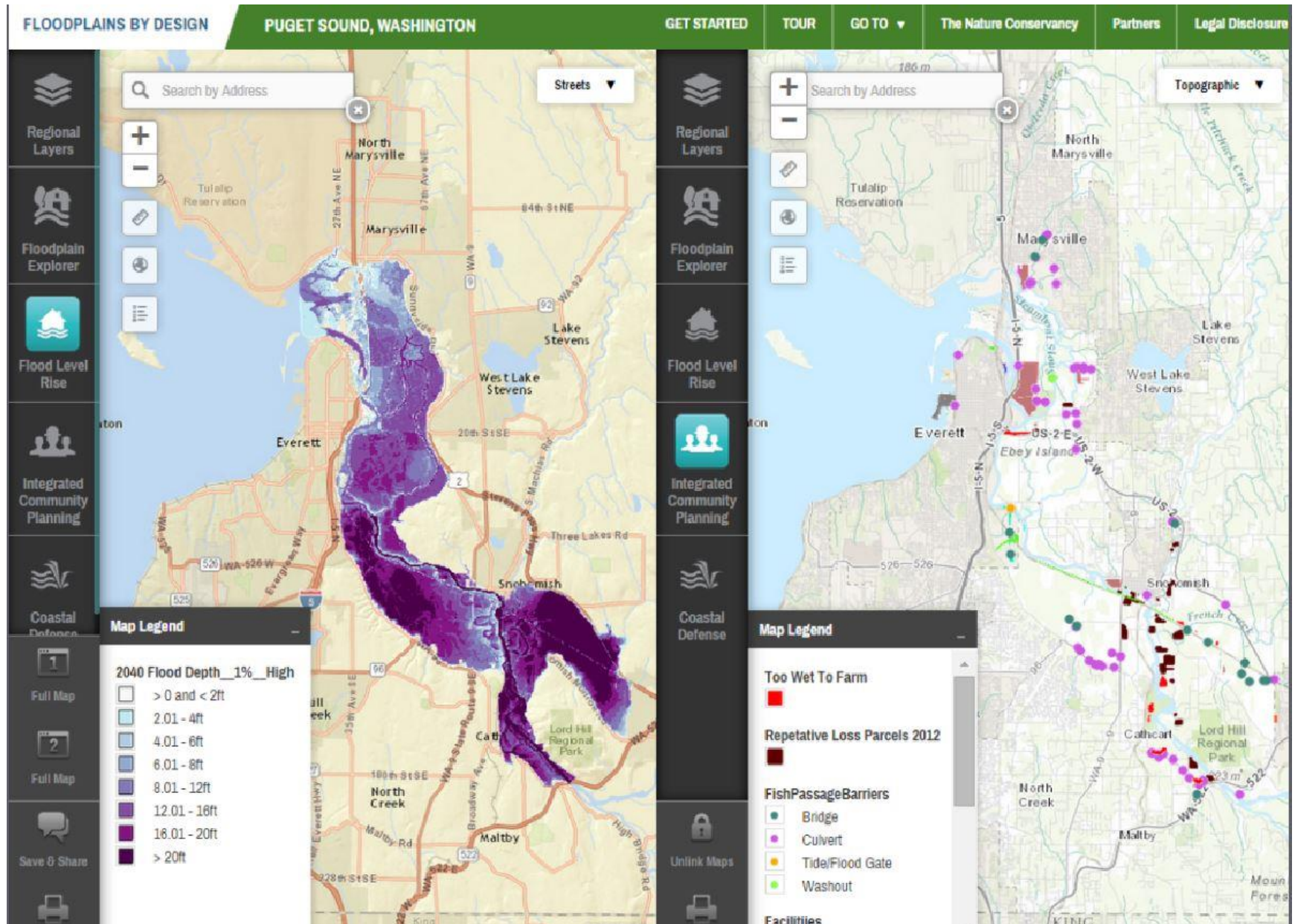
Decision Support for Local Planning



Floodplains by Design

• REDUCING RISK, RESTORING RIVERS •

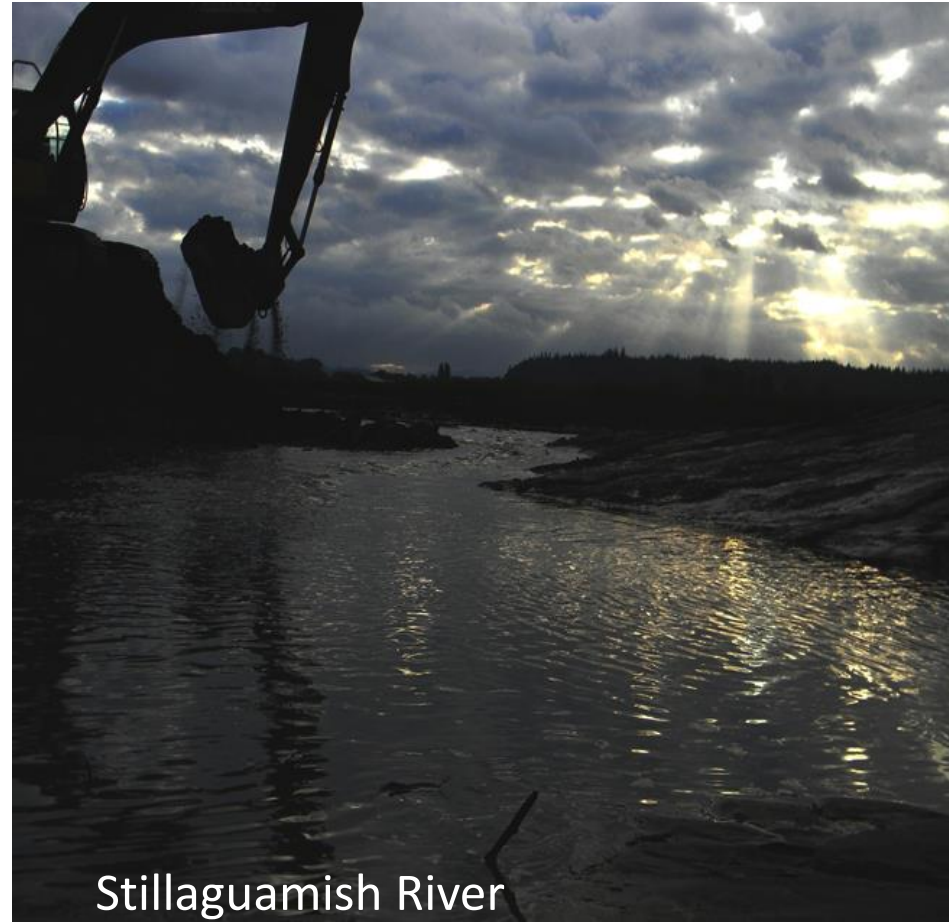
Decision Support for Local Planning



Multi-benefit floodplain projects



Skagit River



Stillaguamish River



Floodplains by Design

• REDUCING RISK, RESTORING RIVERS •



Questions?

kjohnson@tnc.org

