

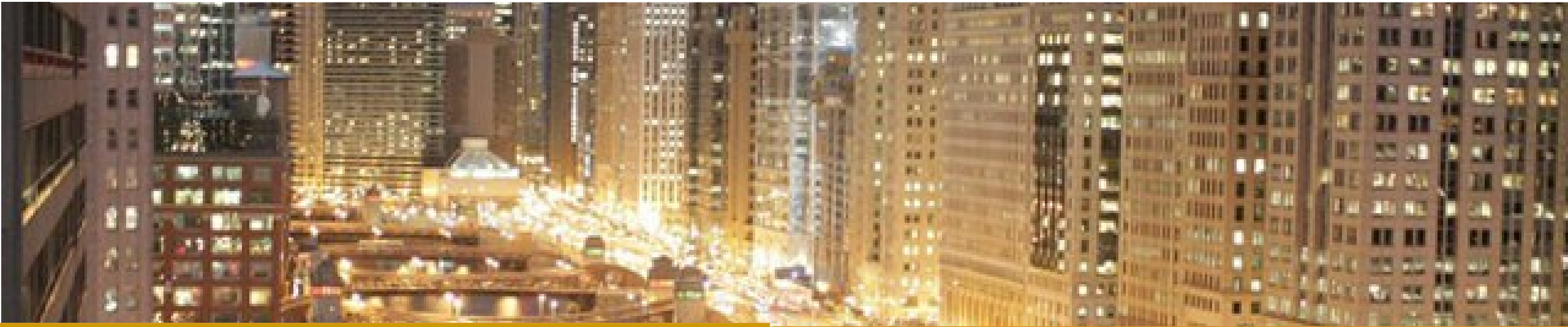
Elsevier Research Intelligence

Integrating Disparate Research Data Sets: Mashups, Visualizations, and Spaghetti Graphs

National Academy of Sciences
SBIR/STTR and the Commercialization Challenge
12 April 2016

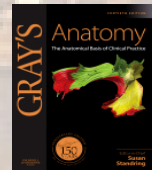
Daniel Calto
Director of Solution Services
Research Intelligence, Elsevier

Elsevier – A Unique Vantage Point on the Global World of Research



Elsevier – From publisher to solution provider

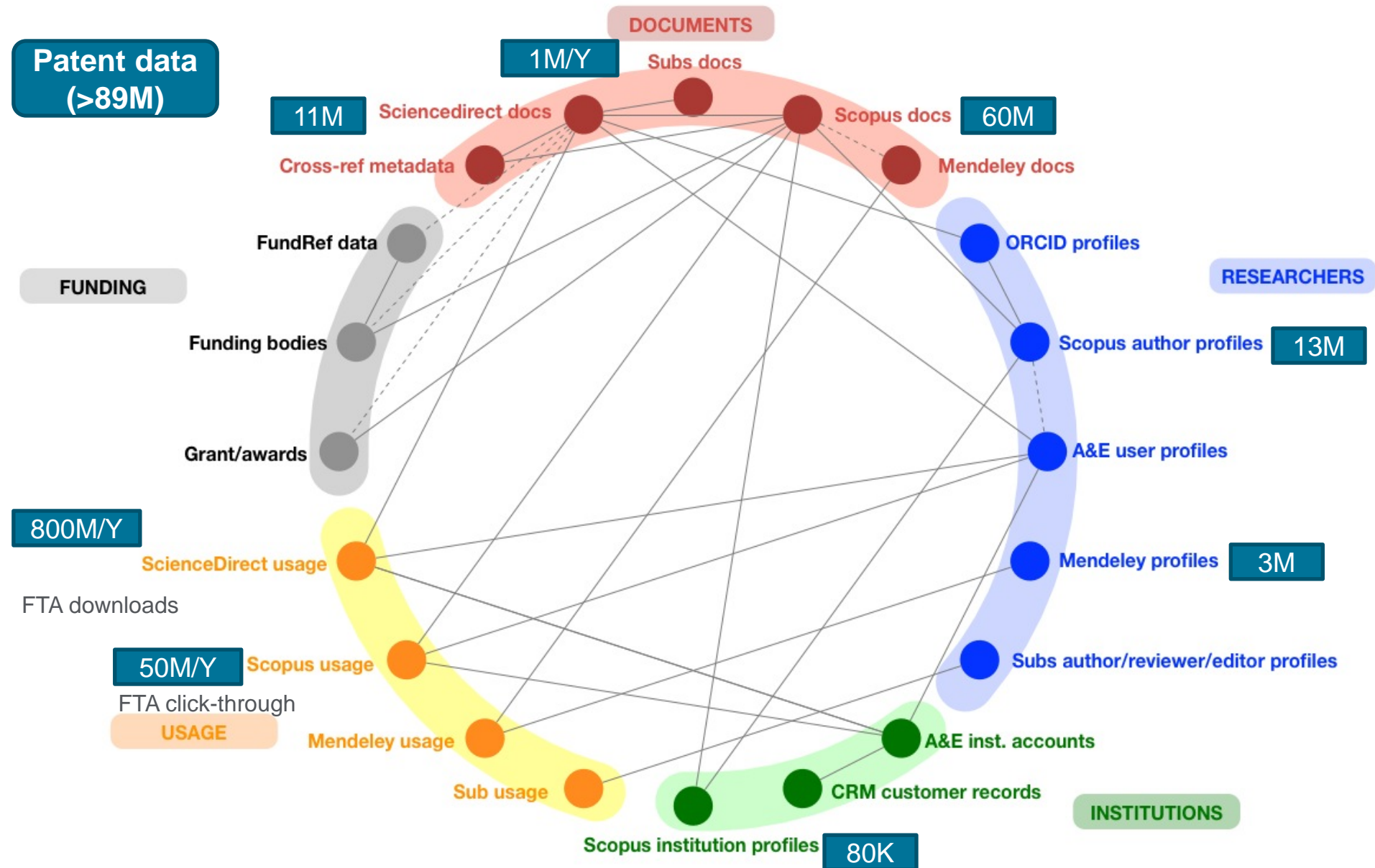
- Serving 30 million+ scientists, students, health and information professionals in 180+ countries
- 2,500 E-journals, 2,000 E-books published each year, dozens of research databases
- RELX (Reed Elsevier), the largest digital company in Europe



Each year

- 1+ million manuscripts submitted to 2,500+ Elsevier journals
- 300,000+ articles published
- 800 million digital article downloads delivered
- 22,000+ journals, >2 million articles per year tracked by Scopus (>60M articles in total)
- Terabytes of data in the Elsevier Research Intelligence suite

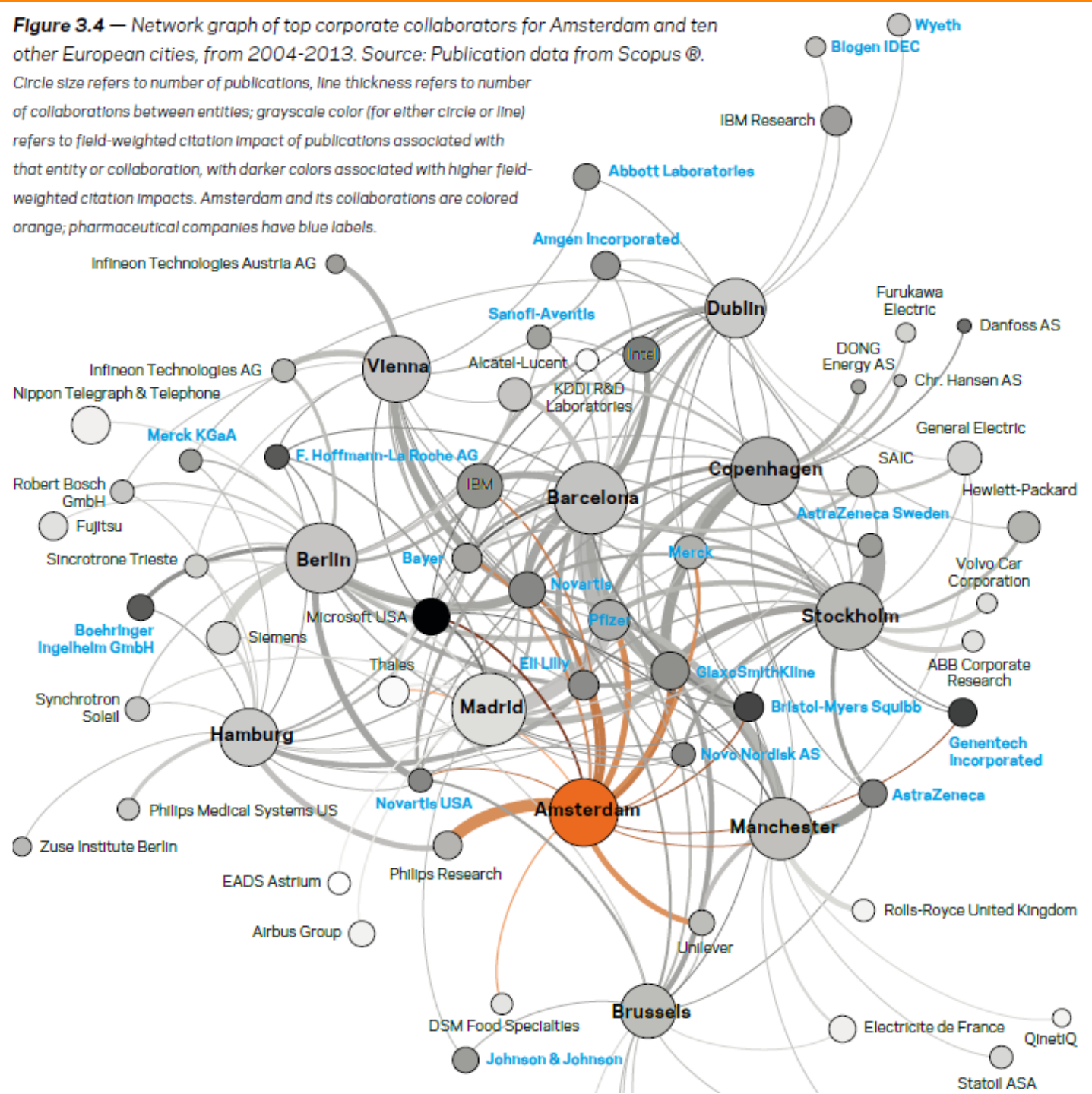
What Data Do We Bring to the Table?



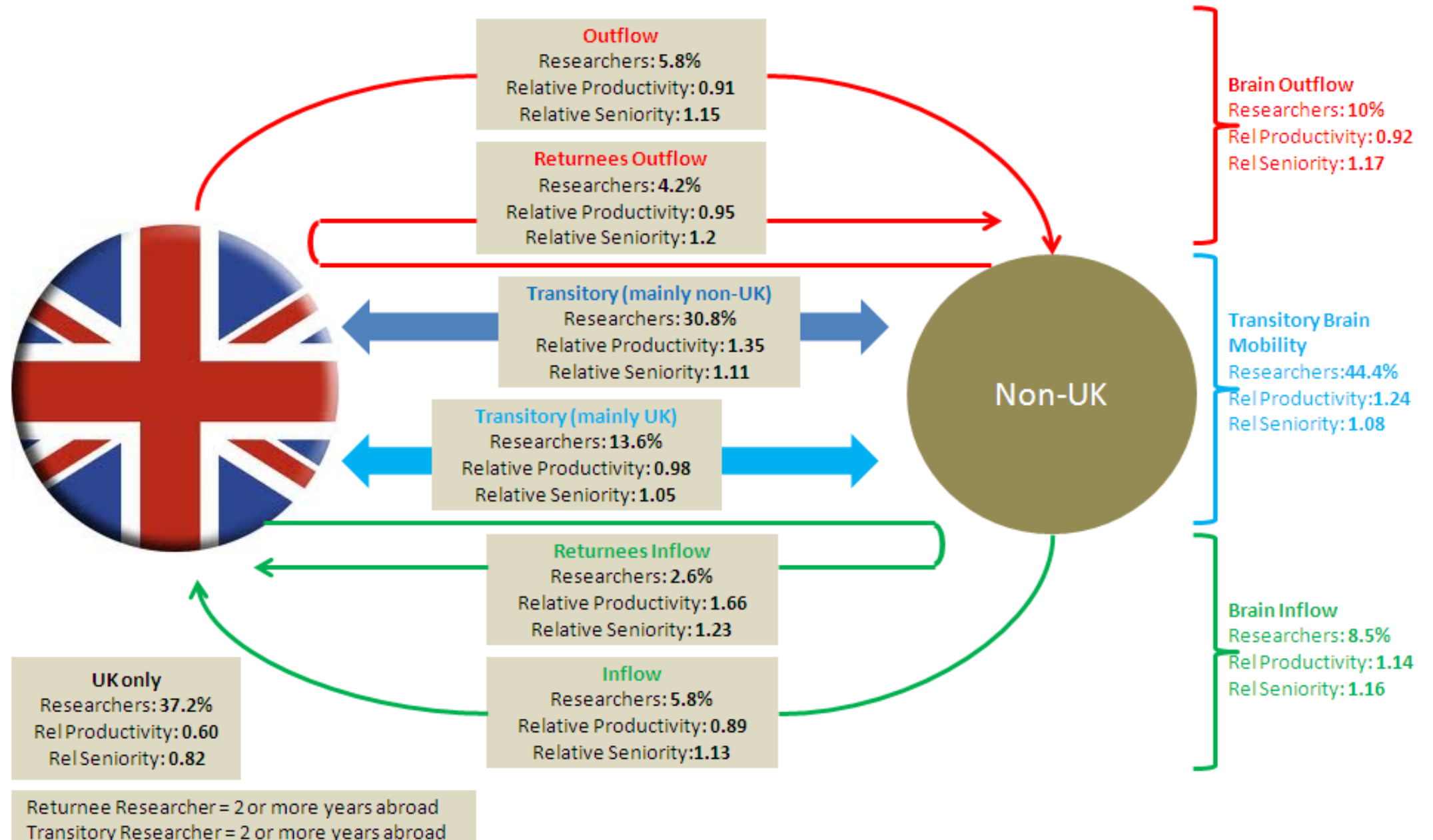
Amsterdam as Knowledge Hub vs. 10 Comparator Cities

- All pubs from Amsterdam and 10 other metro-area universities co-authored with industry
- Initial analysis showed Amsterdam has comparative advantage vs. peers in biomedical research in terms of overall field-weighted citation impact
- Research Q: How are Amsterdam and peer cities connected to major life sciences and other firms?

Figure 3.4 — Network graph of top corporate collaborators for Amsterdam and ten other European cities, from 2004-2013. Source: Publication data from Scopus®. Circle size refers to number of publications, line thickness refers to number of collaborations between entities; grayscale color (for either circle or line) refers to field-weighted citation impact of publications associated with that entity or collaboration, with darker colors associated with higher field-weighted citation impacts. Amsterdam and its collaborations are colored orange; pharmaceutical companies have blue labels.



Monitoring brain circulation—UK map



City Portal – Comparative Analysis of Top 50 Global Research Cities



<http://cityportal.scivalanalytics.com/report/view/theme/2/indicator/4/output/chart/>

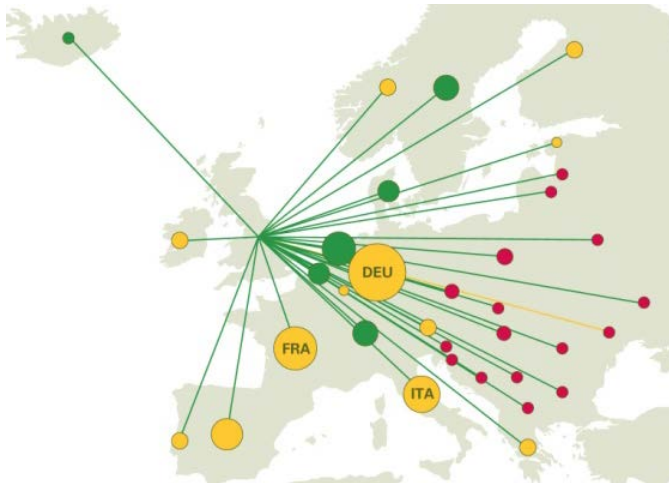


Data

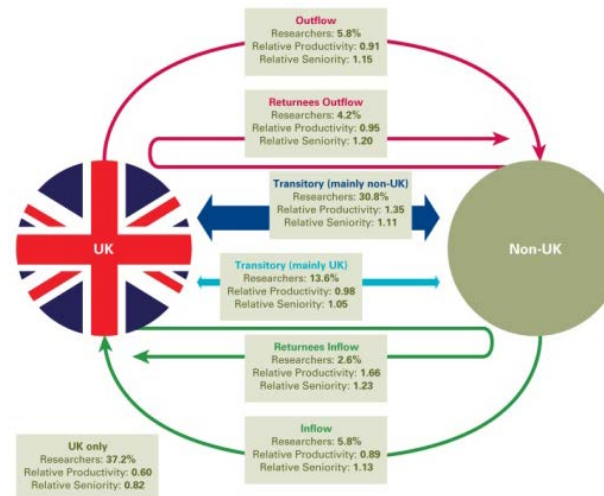
BIS Report: Quantitative Inputs

- Scopus
- ScienceDirect usage
- OECD
- HESA
- WIPO
- AUTM
- HEFCE
- 112 database tables, 2.3 Gigabytes
- 20MM+ articles, 200MM+ citations, 3B downloads
- 45MM indicator values
- Largest indicator: 6MM+ values

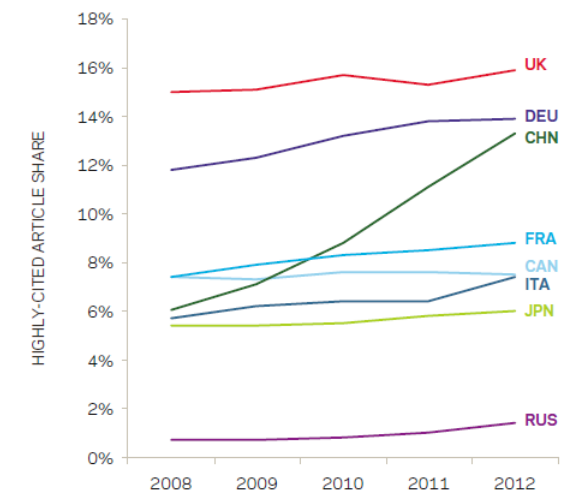
Collaboration networks



Brain Circulation



Highly-Cited Articles (ex. US)



Analyses

Pure Experts State Portals—Texas and Michigan Systems



Find University Experts or Resources:

Everything e.g. 'plastic coatings' or 'biofuels'

[Advanced Search](#) [Search Help](#)

UT System Launched a New Clinical Trial Network

Drugs and therapies created by UT Institutions can reach patients faster and more effectively

[Click to learn more](#)



Events and Announcements

UT System Campuses Part of White House Cyber Plan

Connect, Collaborate and Create

Find a Resource or Faculty Expert

Influent's Experts Network gives you the power to search across all UT System campuses for faculty experts on any topic from architecture to zoology. Search

Take the Next Step and Connect

You've found the one—or ten, or twenty—experts that can help you. Now you need to connect. We've made that easy. Use one simple form to contact all of your



University Expertise Portal

A way for businesses to connect to the expert resources available at Michigan's universities.

The MCRN University Expertise Portal enables you to search through topics of research and expertise at Michigan's universities and create a request to our business engagement offices to connect you to the on-campus resources your business needs.

Everything e.g. 'plastic coatings' or 'biofuels'

[Search help](#)

[About](#)

[Collaborators](#)



<http://influent.utsystem.edu>

<https://mcrn.pure.elsevier.com/>