

Greer Institute for Leadership and Innovation



twitter

[@Lead_Innovate](https://twitter.com/Lead_Innovate)



www.facebook.com/Greerinstitute

LinkedIn

www.linkedin.com/company/greer-institute-for-leadership-and-innovation

Melvin Greer
Managing Director
Senior Research Fellow
Greer Institute
melvin@greerinstitute.org

About: Scientific Literacy

The Greer Institute is a nonprofit, dedicated to improving the world through the *21st Century Leadership and Innovation*™ . Our mission is clear: work to shape and elevate the conversation surrounding STE(A)M issues through rigorous research and public outreach.

The Greer Institute is a 501(c)(3) based in the Washington, D.C. Area.

Key Concepts

The heart of our approach is a demonstration of how leadership and innovation can answer many of society's most vexing problems.

Workforce and Talent Management

Understanding of today's workforce expectations and their need for innovation as part of work.

Harnessing of disruptive technologies

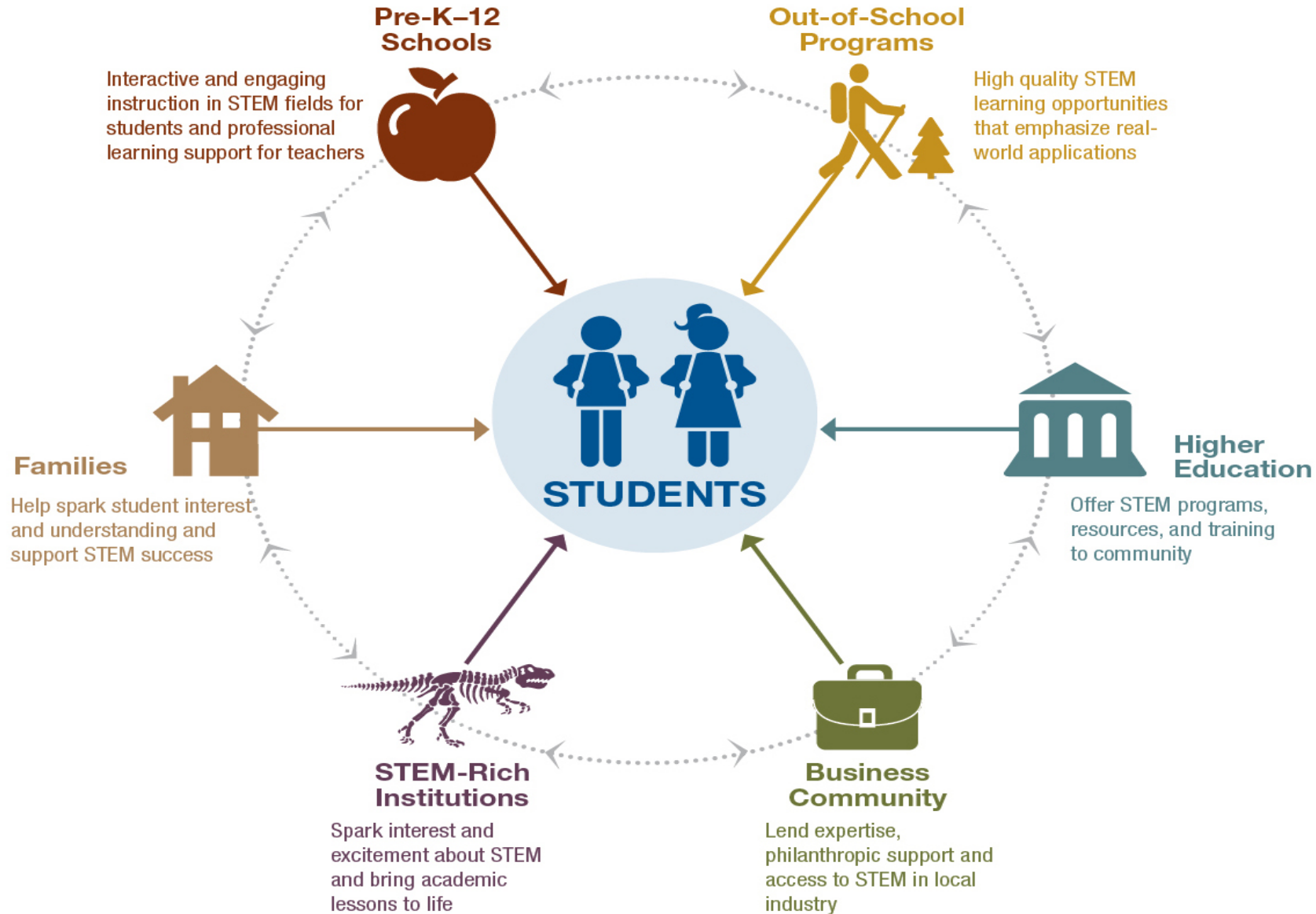
The ability to harness the disruptive innovations of social, mobile, analytics and cyber.

Creation of an innovation engine and culture

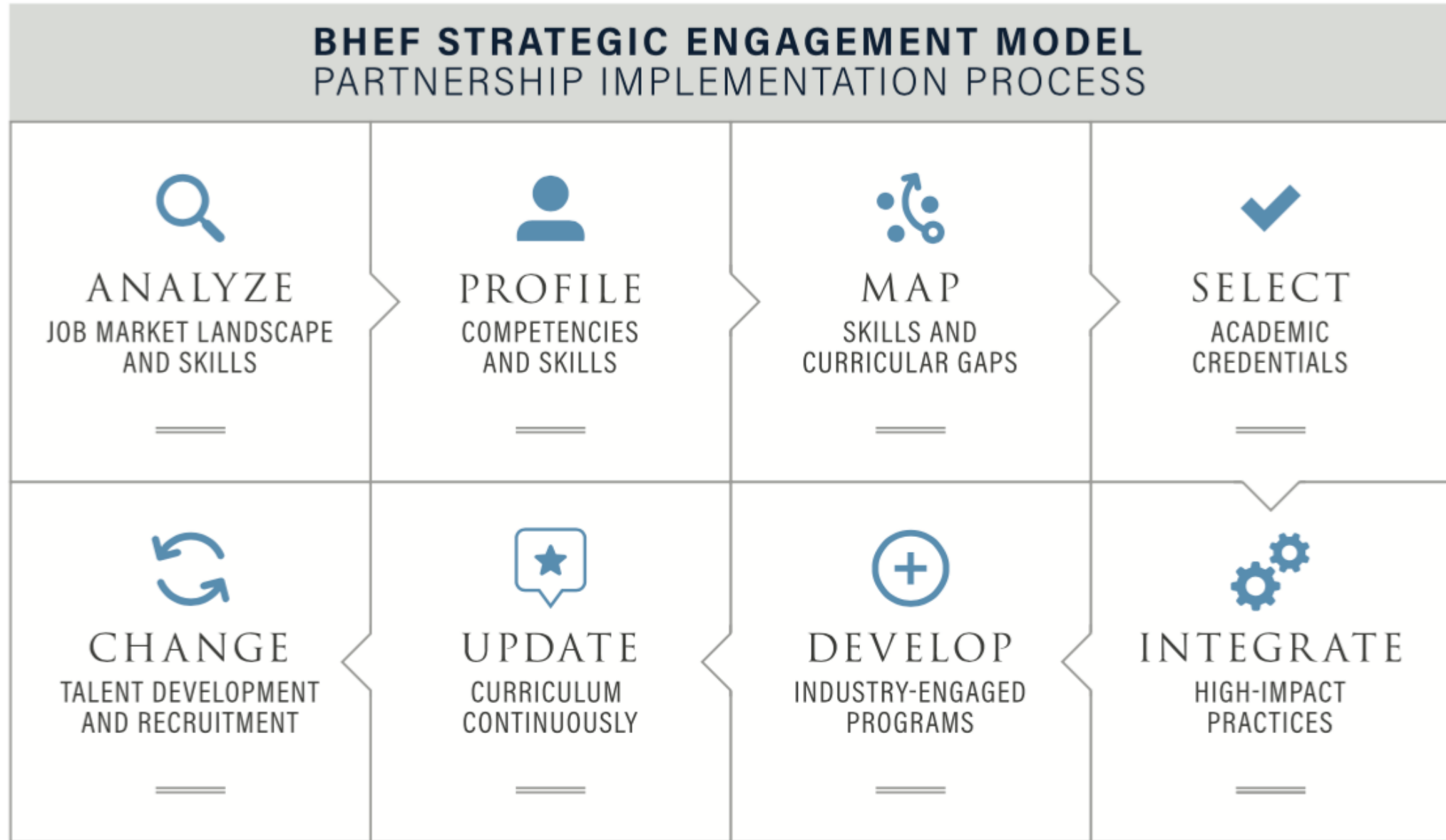
Generating an innovation engine via the education of future leaders via STEM and STEAM.



STEM Learning Ecosystem



NAS Business-Higher Education Forum

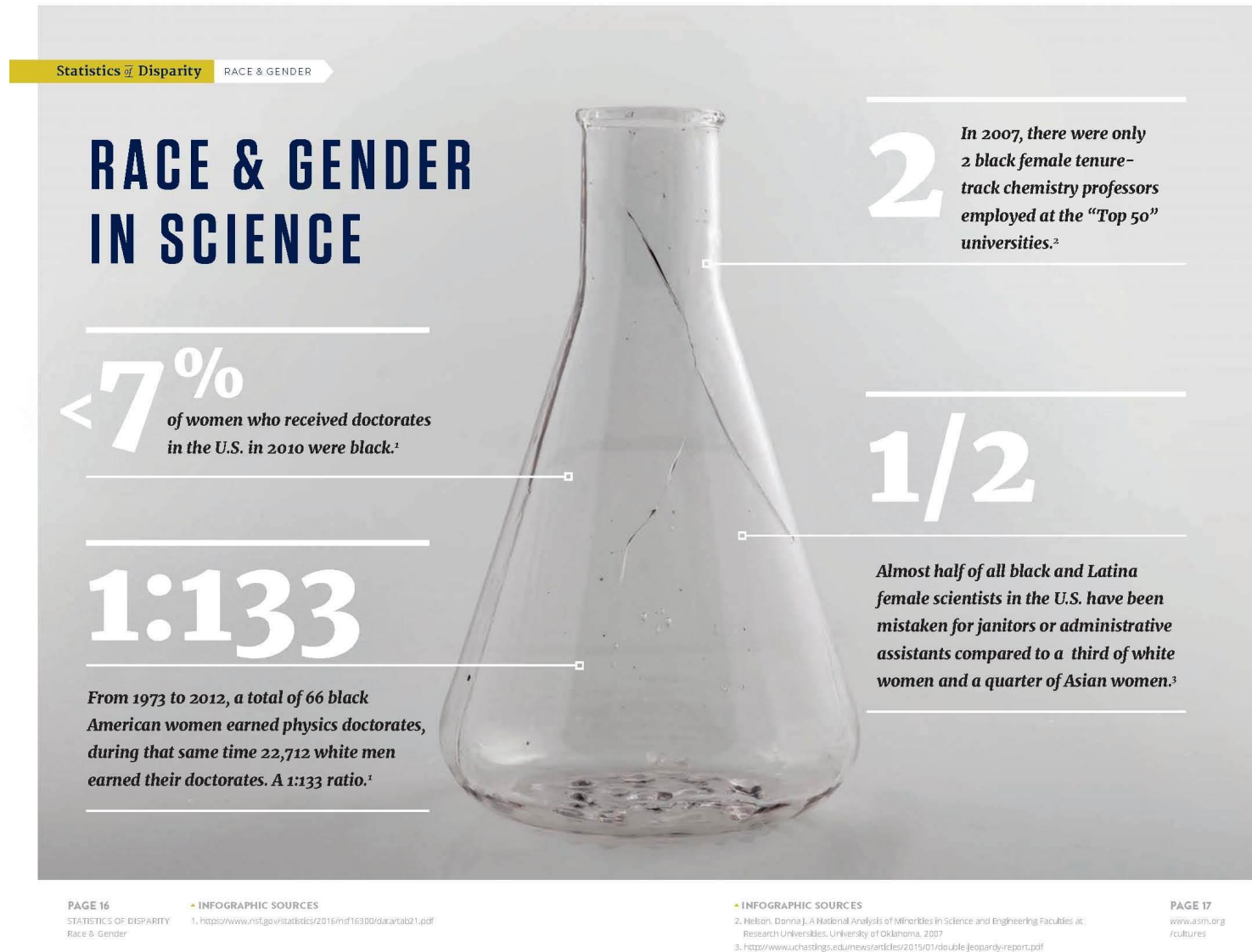


Critical to Economic Development

Current Workforce Gaps

- 1.5M Cyber Analyst Jobs
- 2.7M Data Science Jobs

Adaptation of our pre-school-through-college curricula to encompass new techniques of learning and teaching



Melvin Greer

Managing Director

Senior Research Fellow

melvin@greerinstitutione.org

703 544 5612

