



Board on Research Data and Information
Fall 2017
Ashley Sands

Two IMLS Convenings

NDP AT THREE

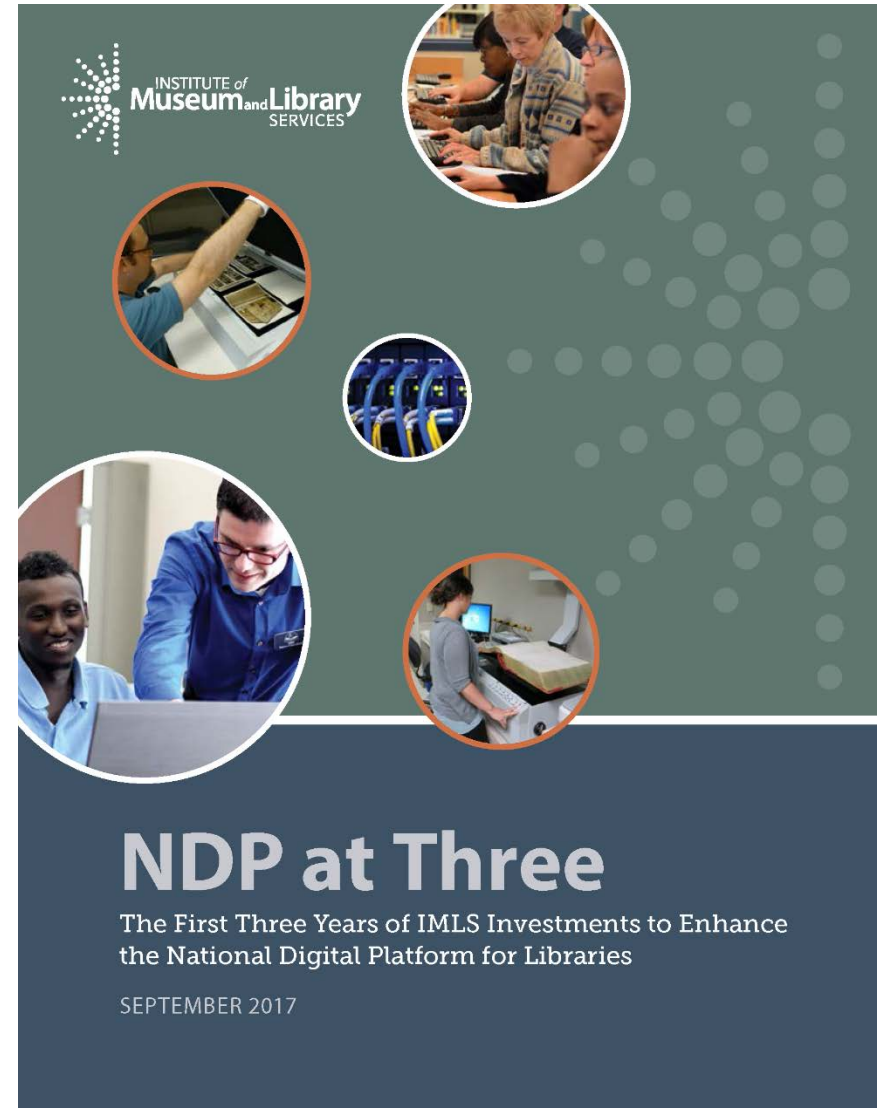
October 17th, Crystal City

POSITIONING LIBRARY AND INFORMATION SCIENCE GRADUATE PROGRAMS FOR 21ST CENTURY PRACTICE

November 7th, Columbia, SC

NDP at 3 Report & Convening

IMLS concludes its third year of National Digital Platform funding through the National Leadership Grants for Libraries Program and the Laura Bush 21st Century Librarian Program, the agency takes a look back at what has been accomplished and explores future directions for increasing the digital capacity of libraries and museums.



Project Categories

- Building Equitable Digital Communities
- Expanding Digital Cultural Heritage Capacities
- Opening Scholarly Communications*

*All data and other products
developed at any point during the
research life cycle*



Opening Scholarly Communications

- Interoperable Tools and Services to Support Researchers
- Establishing Data Services to Support Reproducible Research
- Librarians Engaging in the Full Research Life Cycle
- Expanding Library Publishing Partnerships
- Data Science in Library Science

Photo by Steve Brewer,
University of Southampton/EDISON project
“Data Science in Libraries” Forum

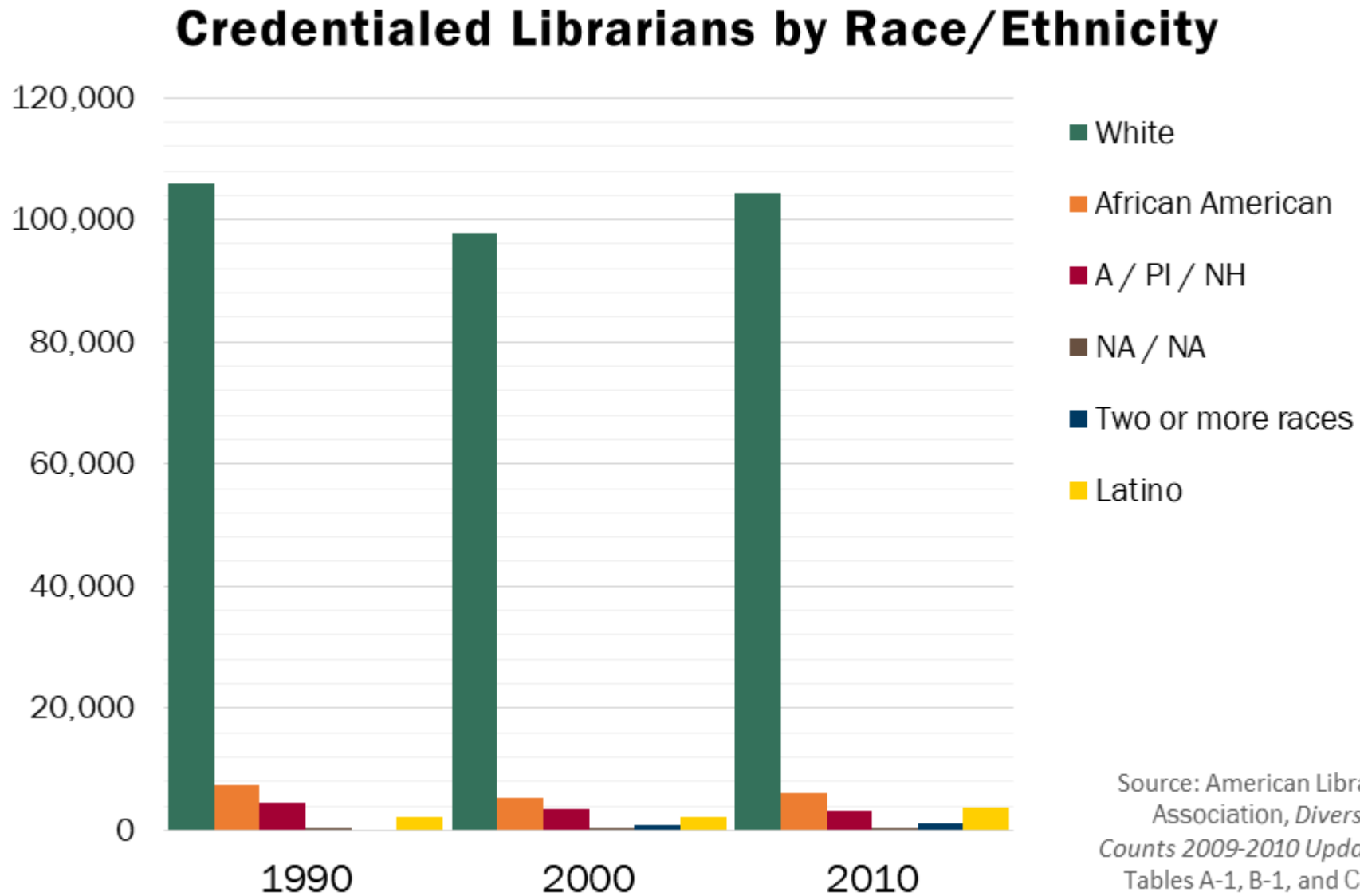


LB21 Convening

- Diversifying the Field of Professionals
- Skills, Expertise, and Competencies
- Alternative Models and Barriers to LIS Graduate Education



Diversifying the Field of Professionals



Skills, Expertise, and Competencies

Open Digital Preservation Training and Professional Development Opportunities

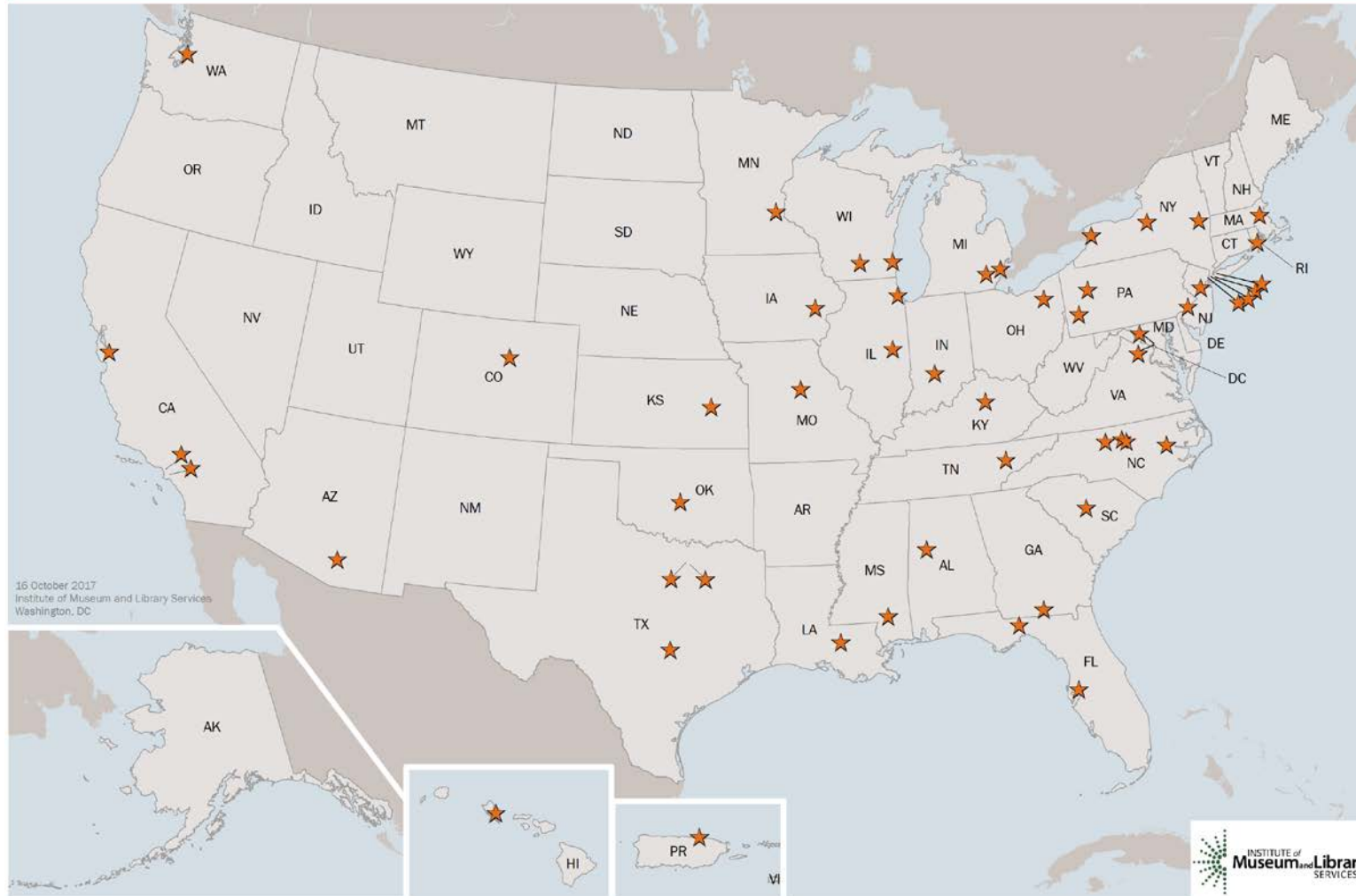
This report begins establishing a common understanding of the types of open digital preservation training materials available.



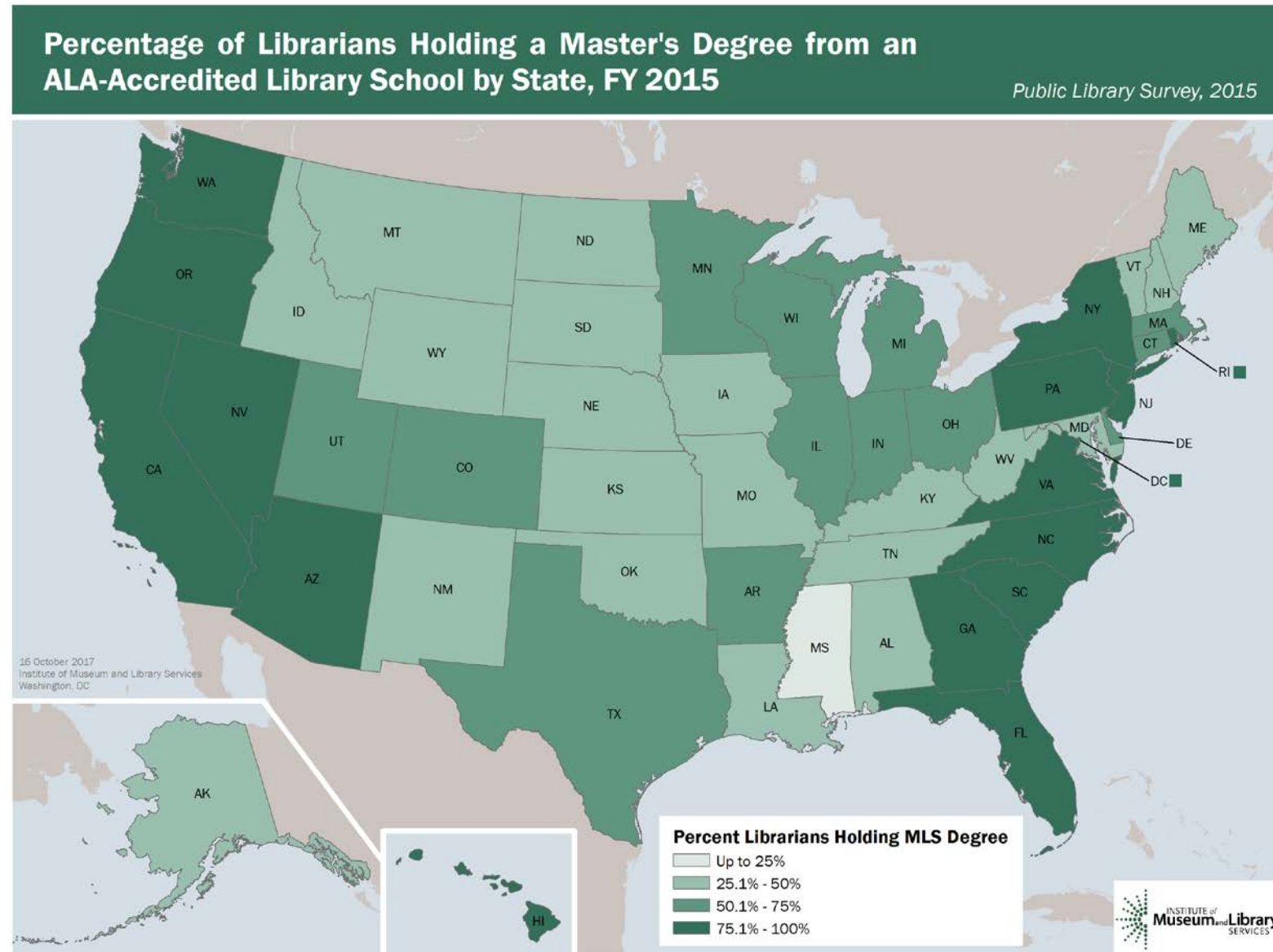
Alternative Models and Barriers to LIS Graduate Education

ALA-Accredited Library Schools in the U.S.

American Library Association, 2017



Alternative Models and Barriers to LIS Graduate Education



IMLS Program Staff

Tim Carrigan

tcarrigan@imls.gov

- Early learning
- Young adult services
- Informal STEM learning
- Making

Sarah Fuller

sfuller@imls.gov

- Community development
- Workforce development
- Services for new Americans
- Public health

Dr. Sandy Toro

storo@imls.gov

- Community & learning research
- Native American & Native Hawaiian library services

James Neal

jneal@imls.gov

- Broadband
- Digital inclusion
- Open educational resources
- Data privacy and security

Emily Reynolds

ereynolds@imls.gov

- Digital collections
- Digital preservation
- Archives & special collections
- Community archives

Dr. Ashley Sands

asands@imls.gov

- Research data management
- Scholarly communications
- Open research infrastructures